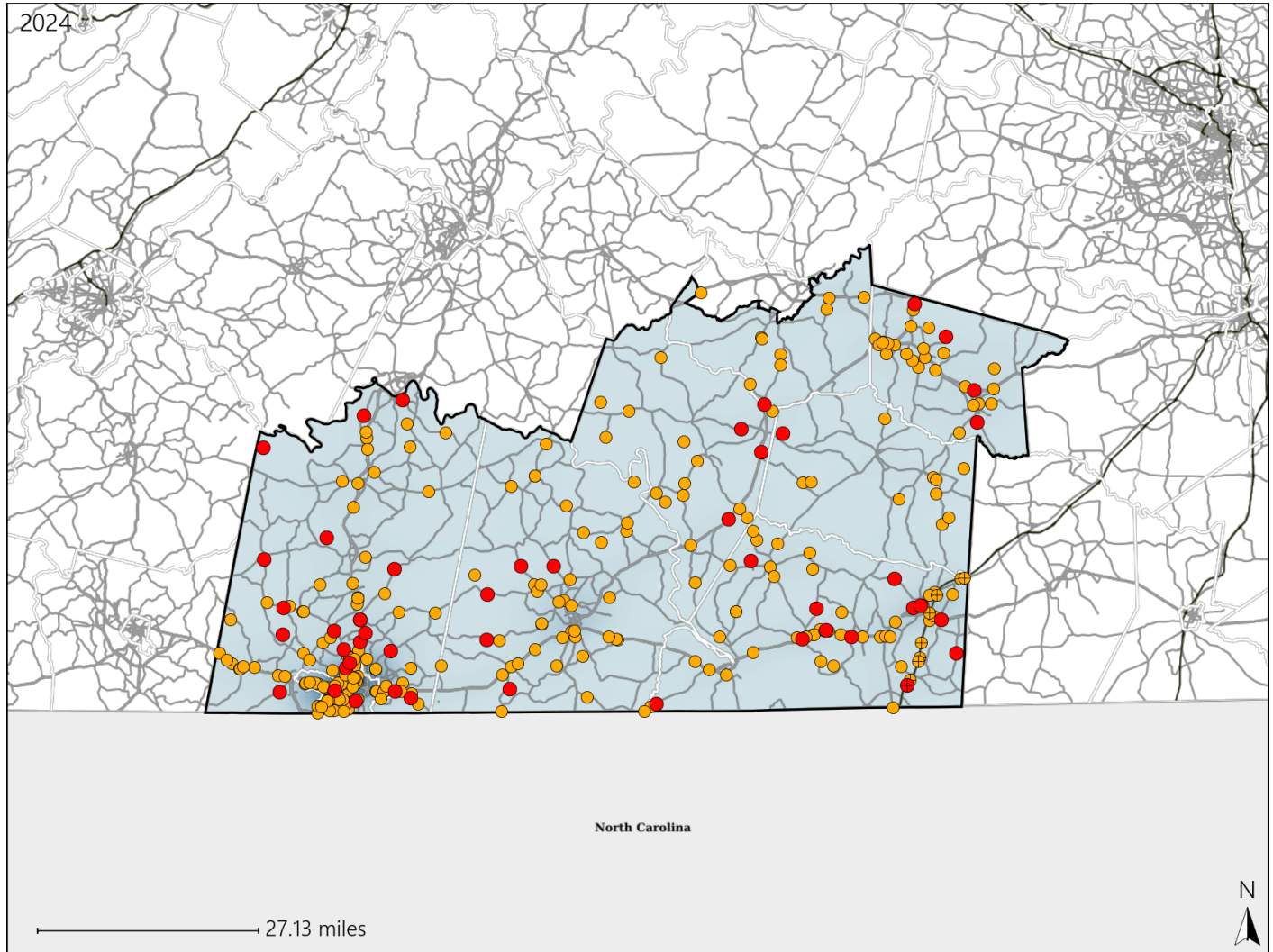


Virginia Senate District 9 Crash Statistics

Report Generated March, 2025

	Count	Highest Time Period(s)	Highest Day(s)	Highest Month(s)
Fatal Crashes	48	3:00pm - 5:59pm	Tuesday	December
Resulting Fatalities	50	9:00pm - 11:59pm (42%)	(29%)	(19%)
Serious Injury Crashes	272	3:00pm - 5:59pm (25%)	Saturday • Tuesday (34%)	July • November (22%)



Senate District 9 Crashes

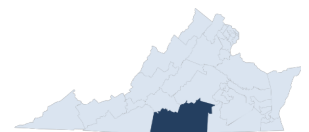
Interstate Crashes

- Fatal
- Serious Injury

Non-interstate Crashes

- Fatal
- Serious Injury

The blue gradient represents the density of all crashes.

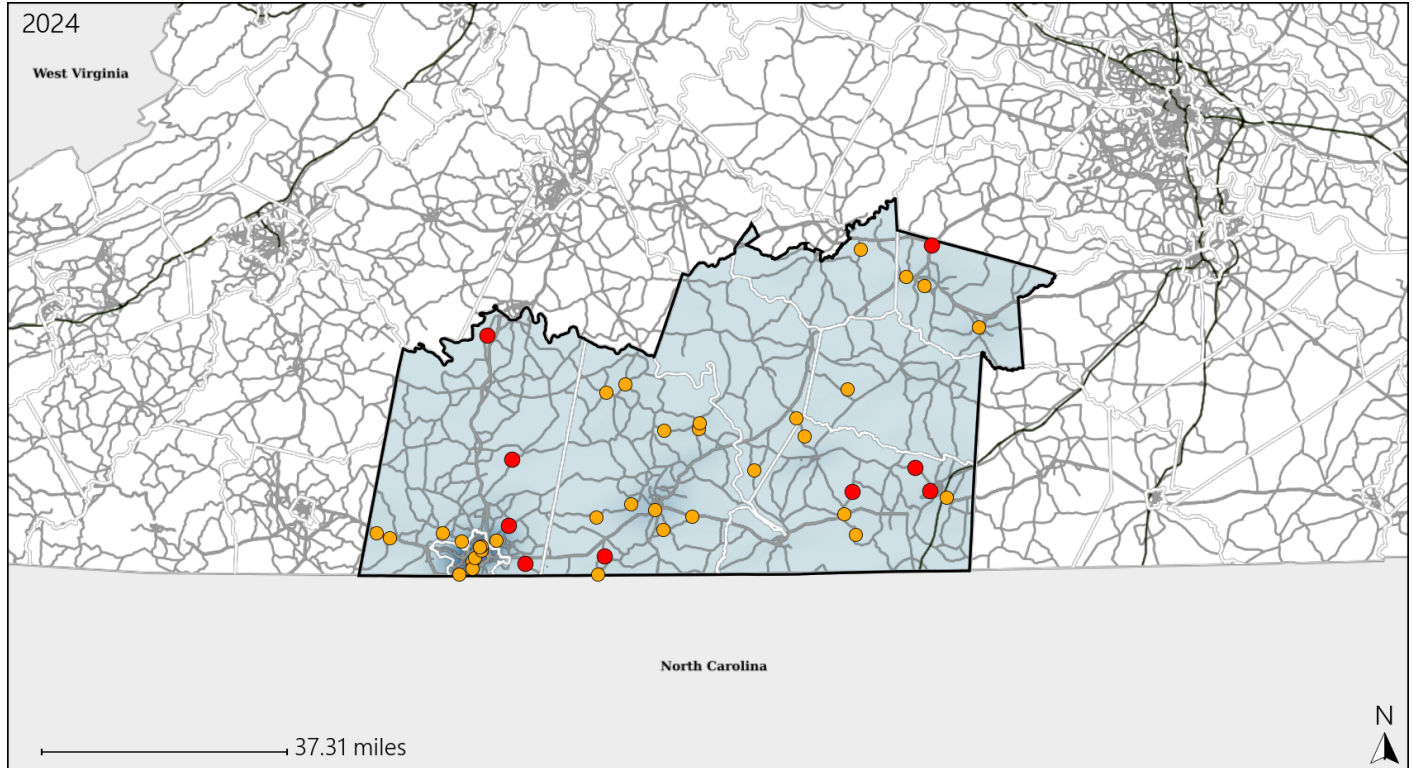


Available Crash Data - Calendar Year (CY)	CY 2021	CY 2022	CY 2023	CY 2024
Total Crashes	3492	3301	3695	3742
Fatal Crashes	55	66	51	48
Injury Crashes	1120	1103	1167	1173

Virginia Senate District 9 Alcohol Crash Statistics

Report Generated March, 2025

	Count	Highest Time Period(s)	Highest Day(s)	Highest Month(s)
Fatal Crashes	9	9:00pm - 11:59pm	Tuesday	January
Resulting Fatalities	10	(44%)	(33%)	(33%)
Serious Injury Crashes	34	3:00pm - 5:59pm	Saturday	November
		(29%)	(24%)	(15%)



Senate District 9 Alcohol-Related Crashes

Interstate Crashes

Non-interstate Crashes

● Fatal

● Fatal

● Serious Injury

● Serious Injury

The blue gradient represents the density of all alcohol-related crashes.

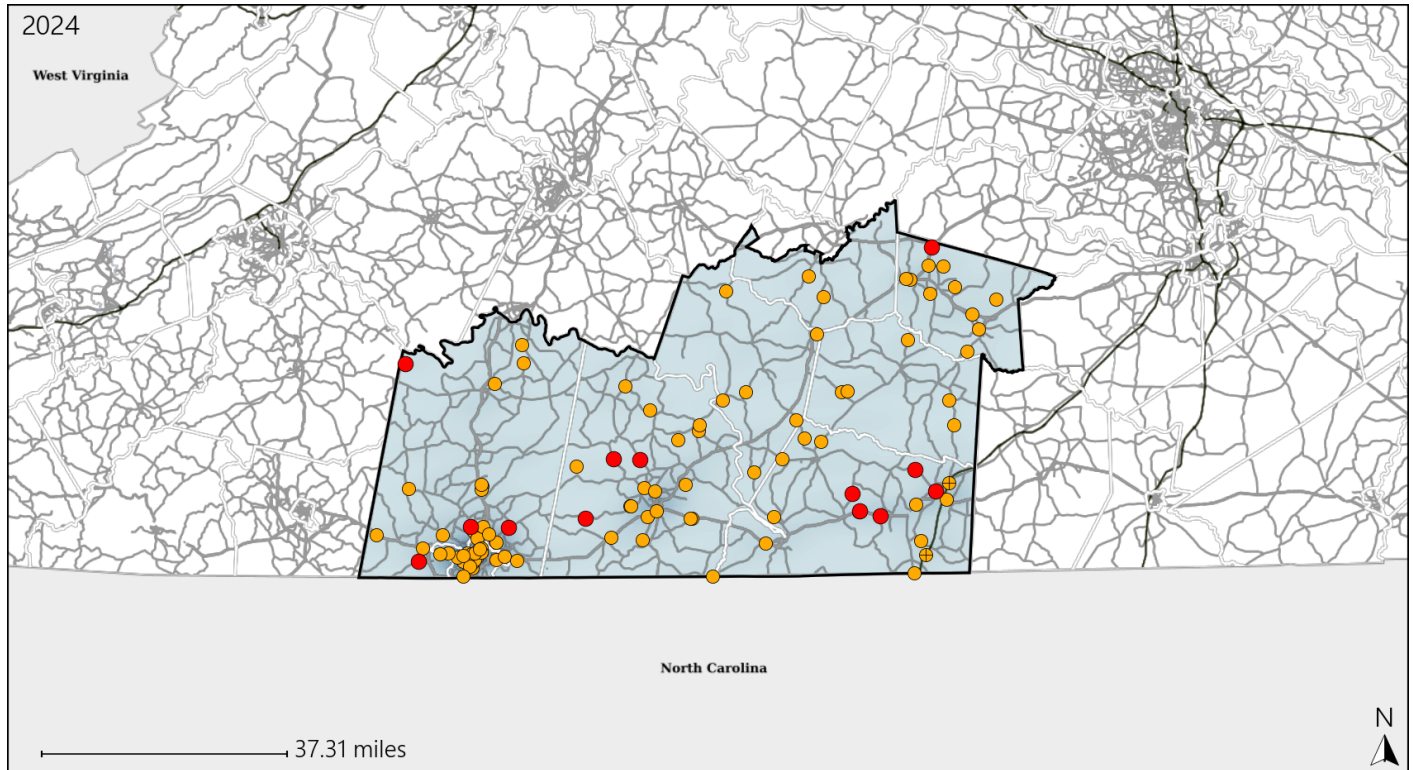


Available Crash Data - Calendar Year (CY)	CY 2021	CY 2022	CY 2023	CY 2024
Total Crashes	3492	3301	3695	3742
Fatal Crashes	55	66	51	48
Injury Crashes	1120	1103	1167	1173
Alcohol-Related Fatal Crashes	11	25	18	9
Percent of Alcohol-Related Fatal Crashes to Total Fatal Crashes	20%	38%	35%	19%
Alcohol-Related Injury Crashes	88	93	76	103
Percent of Alcohol-Related Injury Crashes to Total Injury Crashes	8%	8%	7%	9%

Virginia Senate District 9 Speed Crash Statistics

Report Generated March, 2025

	Count	Highest Time Period(s)	Highest Day(s)	Highest Month(s)
Fatal Crashes	13	Noon - 2:59pm	Friday • Saturday	December • January
Resulting Fatalities	14	(54%)	(46%)	(30%)
Serious Injury Crashes	88	3:00pm - 5:59pm	Monday • Sunday	November
		(33%)	(34%)	(12%)



Senate District 9 Speed-Related Crashes

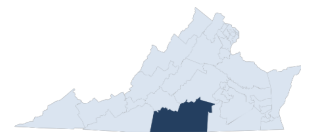
Interstate Crashes

Non-interstate Crashes

- Fatal
- Serious Injury

- Fatal
- Serious Injury

The blue gradient represents the density of all speed-related crashes.

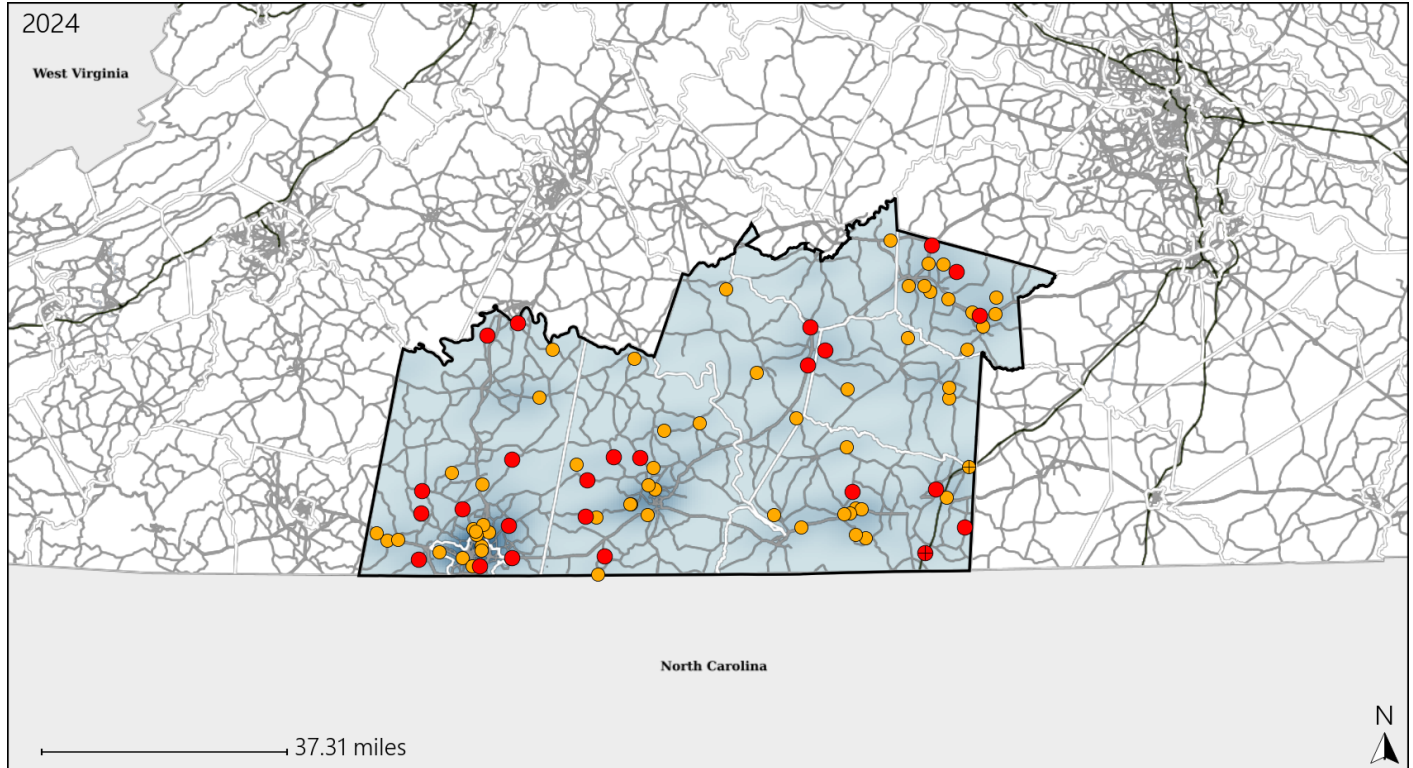


Available Crash Data - Calendar Year (CY)	CY 2021	CY 2022	CY 2023	CY 2024
Total Crashes	3492	3301	3695	3742
Fatal Crashes	55	66	51	48
Injury Crashes	1120	1103	1167	1173
Speed-Related Fatal Crashes	25	27	30	13
Percent of Speed-Related Fatal Crashes to Total Fatal Crashes	45%	41%	59%	27%
Speed-Related Injury Crashes	231	246	246	243
Percent of Speed-Related Injury Crashes to Total Injury Crashes	21%	22%	21%	21%

Virginia Senate District 9 Unrestrained Crash Statistics

Report Generated March, 2025

	Count	Highest Time Period(s)	Highest Day(s)	Highest Month(s)
Fatal Crashes	25	9:00am - 11:59am	Saturday • Tuesday	December
Unrestrained Fatalities	27	(24%)	(48%)	(24%)
Serious Injury Crashes	60	3:00pm - 5:59pm	Saturday	February • November
		(18%)	(18%)	(30%)



Senate District 9 Unrestrained-Related Crashes

Interstate Crashes

Non-interstate Crashes

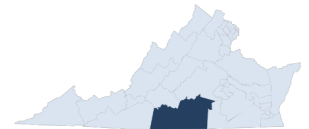
● Fatal

● Fatal

⊕ Serious Injury

● Serious Injury

The blue gradient represents the density of all unrestrained-related crashes.



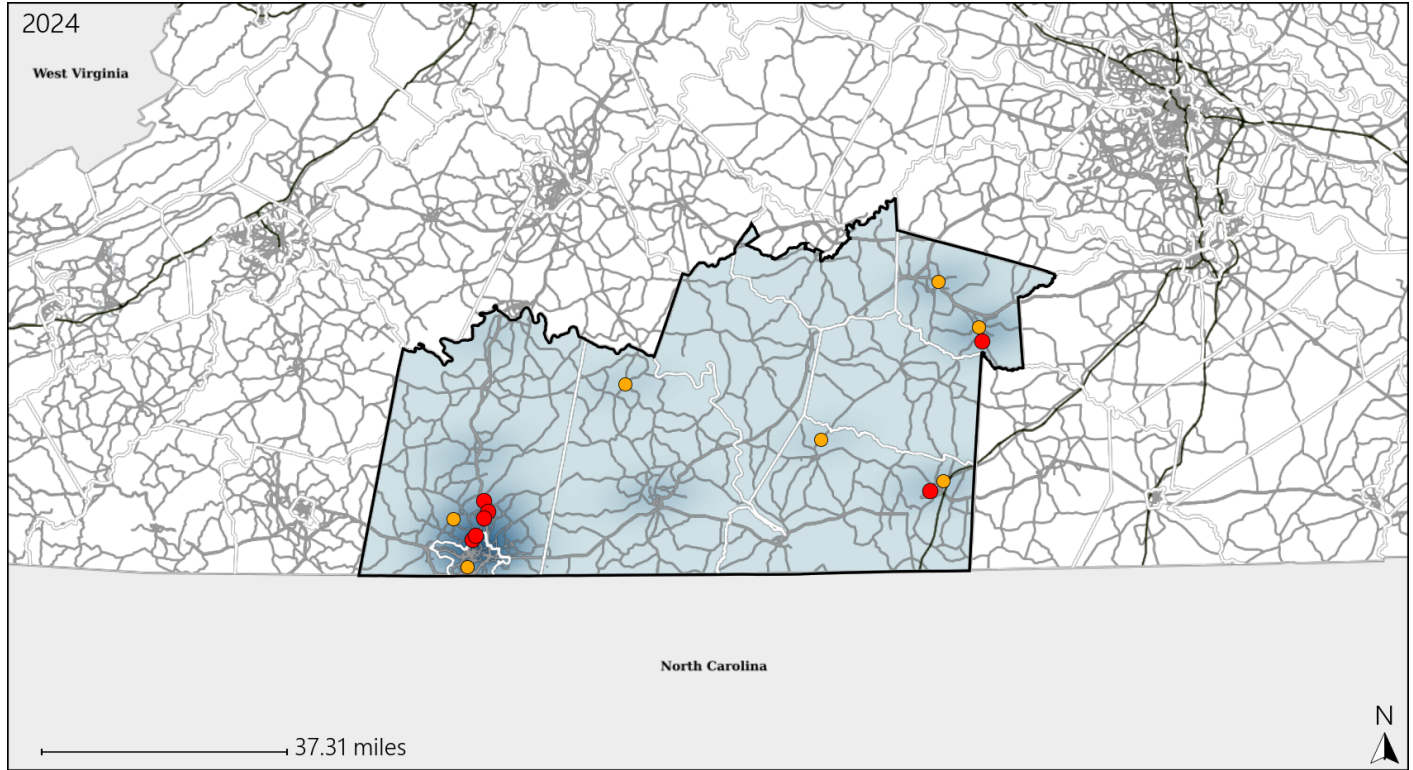
Available Crash Data - Calendar Year (CY)	CY 2021	CY 2022	CY 2023	CY 2024
Total Crashes	3492	3301	3695	3742
Fatalities	61	73	59	50
Injuries	1557	1499	1686	1709
Unrestrained Fatalities	30	41	28	27
Percent of Unrestrained Fatalities to Total Fatalities	49%	56%	47%	54%
Unrestrained Injuries	225	186	208	202
Percent of Unrestrained Injuries to Total Injuries	14%	12%	12%	12%

Report of Crashes for January 1st - December 31st, 2024

Virginia Senate District 9 Pedestrian Crash Statistics

Report Generated March, 2025

	Count	Highest Time Period(s)	Highest Day(s)	Highest Month(s)
Fatal Crashes	7	9:00pm - 11:59pm	Tuesday	December
Pedestrian Fatalities	7	(43%)	(43%)	(43%)
Serious Injury Crashes	7	9:00pm - 11:59pm	Friday	November
		(43%)	(43%)	(43%)



Senate District 9 Pedestrian-Related Crashes

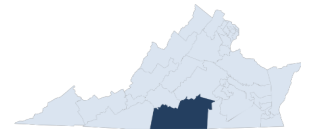
Interstate Crashes

Non-interstate Crashes

- Fatal
- Serious Injury

- Fatal
- Serious Injury

The blue gradient represents the density of all pedestrian-related crashes.

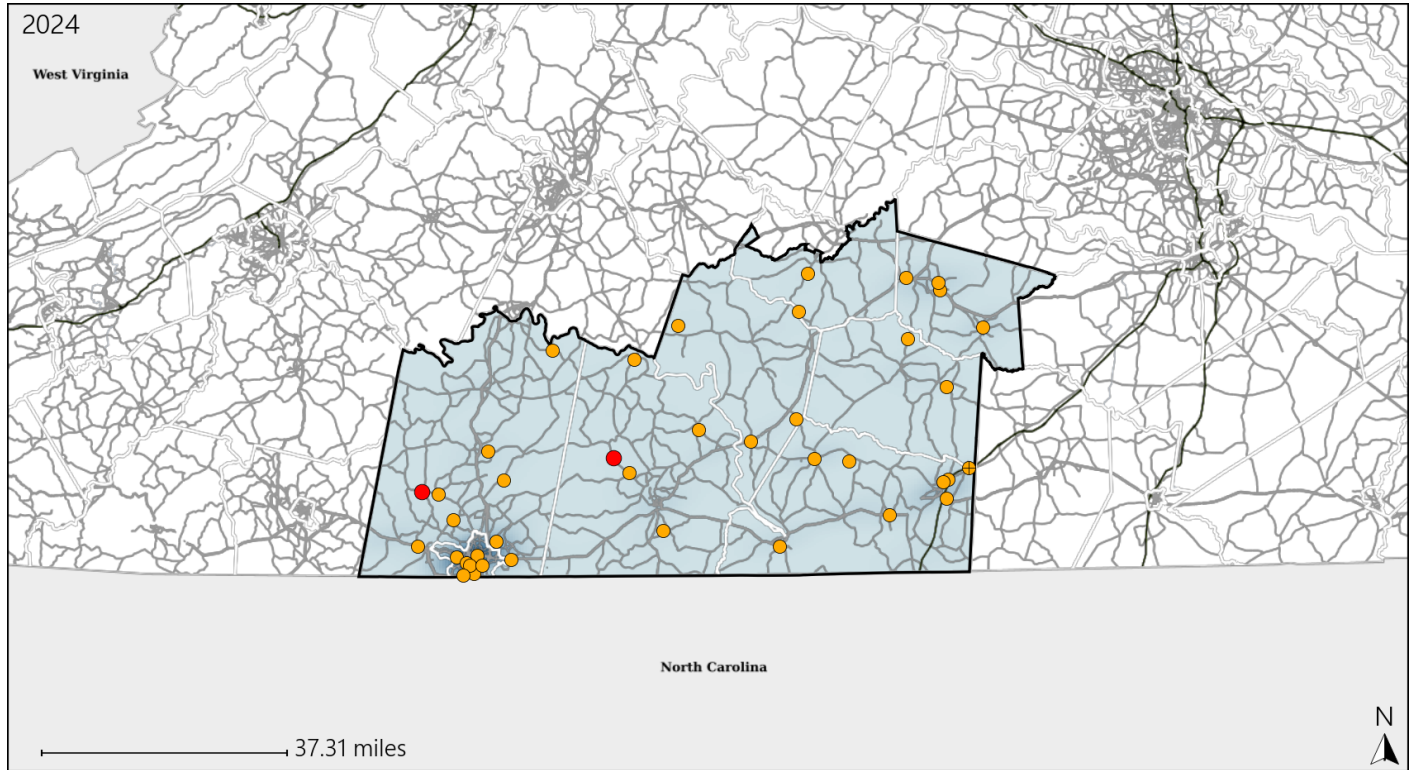


Available Crash Data - Calendar Year (CY)	CY 2021	CY 2022	CY 2023	CY 2024
Total Crashes	3492	3301	3695	3742
Fatal Crashes	55	66	51	48
Injury Crashes	1120	1103	1167	1173
Pedestrian-Related Fatal Crashes	5	8	0	7
Percent of Pedestrian-Related Fatal Crashes to Total Fatal Crashes	9%	12%	0%	15%
Pedestrian-Related Injury Crashes	12	26	24	20
Percent of Pedestrian-Related Injury Crashes to Total Injury Crashes	1%	2%	2%	2%

Virginia Senate District 9 Distracted Driving Crash Statistics

Report Generated March, 2025

	Count	Highest Time Period(s)	Highest Day(s)	Highest Month(s)
Fatal Crashes	2	3:00pm - 5:59pm	Thursday • Tuesday	December • January
Resulting Fatalities	3	Noon - 2:59pm (100%)	(100%)	(100%)
Serious Injury Crashes	38	Noon - 2:59pm (32%)	Saturday (26%)	September (16%)



Senate District 9 Distracted Driving-Related Crashes

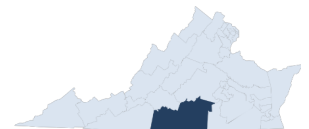
Interstate Crashes

Non-interstate Crashes

- Fatal
- Serious Injury

- Fatal
- Serious Injury

The blue gradient represents the density of all distracted driving-related crashes.



Available Crash Data - Calendar Year (CY)	CY 2021	CY 2022	CY 2023	CY 2024
Total Crashes	3492	3301	3695	3742
Fatal Crashes	55	66	51	48
Injury Crashes	1120	1103	1167	1173
Distracted Driving-Related Fatal Crashes	3	7	3	2
Percent of Distracted Driving-Related Fatal Crashes to Total Fatal Crashes	5%	11%	6%	4%
Distracted Driving-Related Injury Crashes	172	160	154	154
Percent of Distracted Driving-Related Injury Crashes to Total Injury Crashes	15%	15%	13%	13%