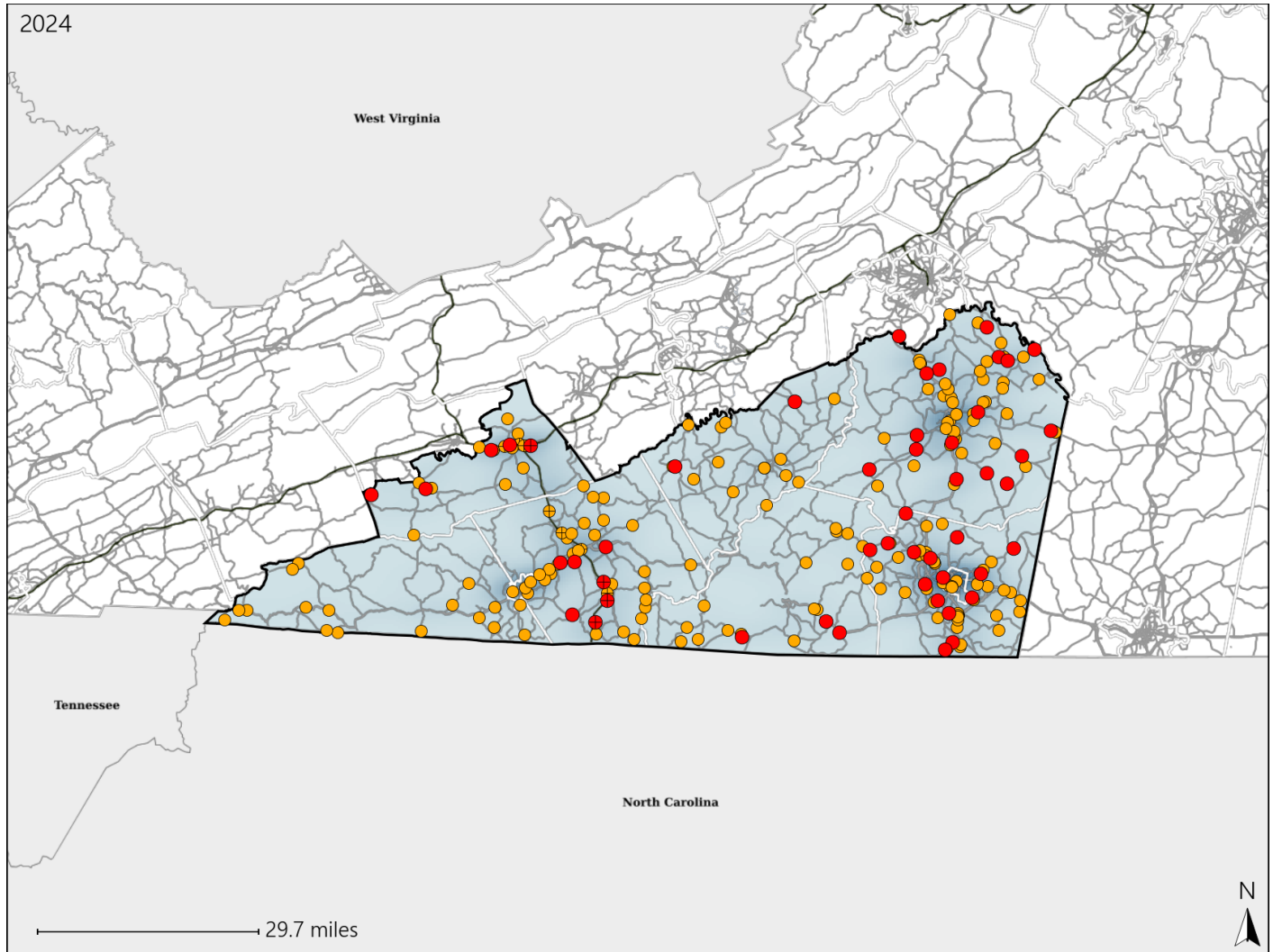


Virginia Senate District 7 Crash Statistics

Report Generated March, 2025

	Count	Highest Time Period(s)	Highest Day(s)	Highest Month(s)
Fatal Crashes	49	3:00pm - 5:59pm	Friday • Saturday	January • March
Resulting Fatalities	53	(24%)	(40%)	(28%)
Serious Injury Crashes	182	3:00pm - 5:59pm	Saturday	June
		(30%)	(18%)	(16%)



Senate District 7 Crashes

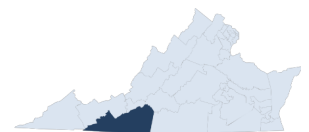
Interstate Crashes

- Fatal
- Serious Injury

Non-interstate Crashes

- Fatal
- Serious Injury

The blue gradient represents the density of all crashes.

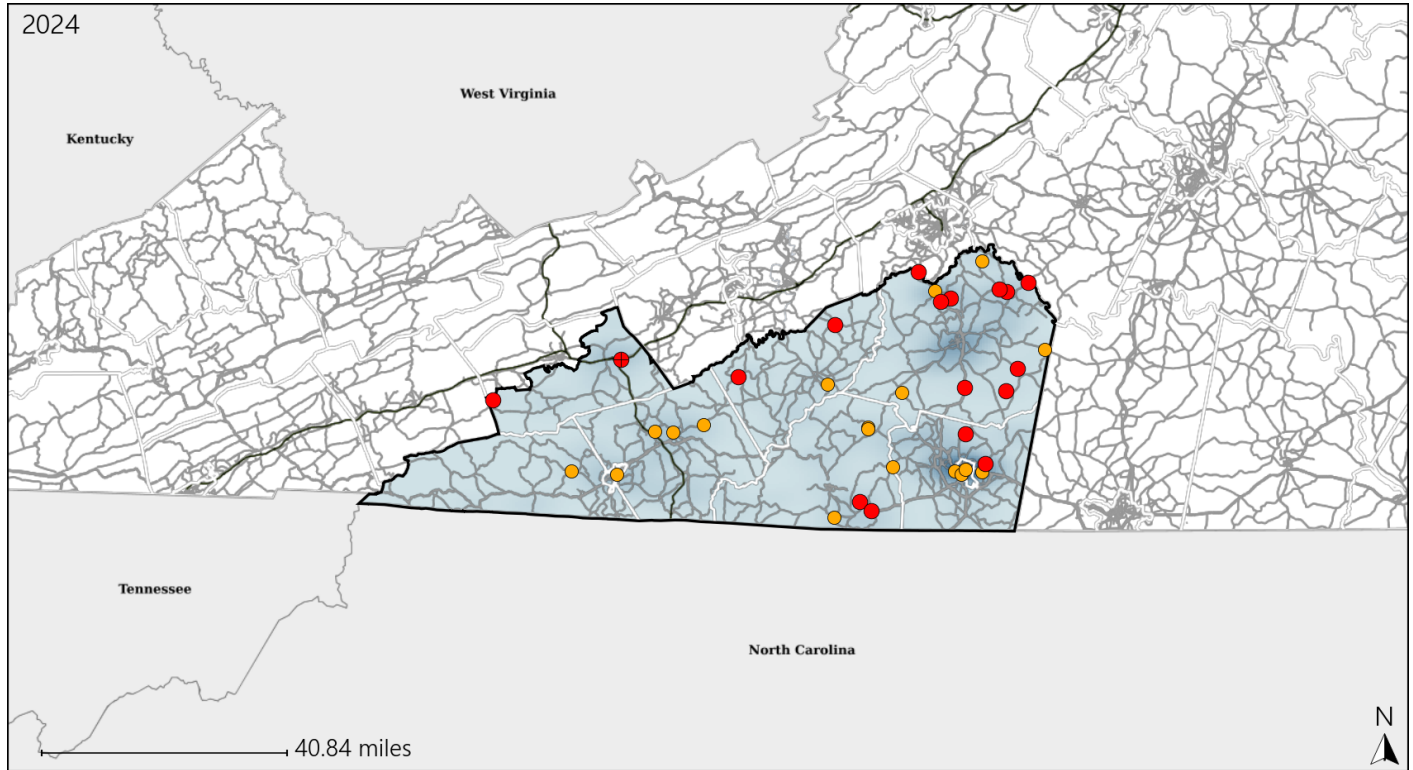


Available Crash Data - Calendar Year (CY)	CY 2021	CY 2022	CY 2023	CY 2024
Total Crashes	3319	3356	3363	3550
Fatal Crashes	34	52	37	49
Injury Crashes	861	900	878	864

Virginia Senate District 7 Alcohol Crash Statistics

Report Generated March, 2025

	Count	Highest Time Period(s)	Highest Day(s)	Highest Month(s)
Fatal Crashes	17	3:00pm - 5:59pm	Saturday	May
Resulting Fatalities	18	9:00pm - 11:59pm (48%)	(35%)	(24%)
Serious Injury Crashes	18	6:00pm - 8:59pm (39%)	Thursday (28%)	December • September (34%)



Senate District 7 Alcohol-Related Crashes

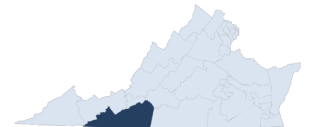
Interstate Crashes

Non-interstate Crashes

- Fatal
- Serious Injury

- Fatal
- Serious Injury

The blue gradient represents the density of all alcohol-related crashes.

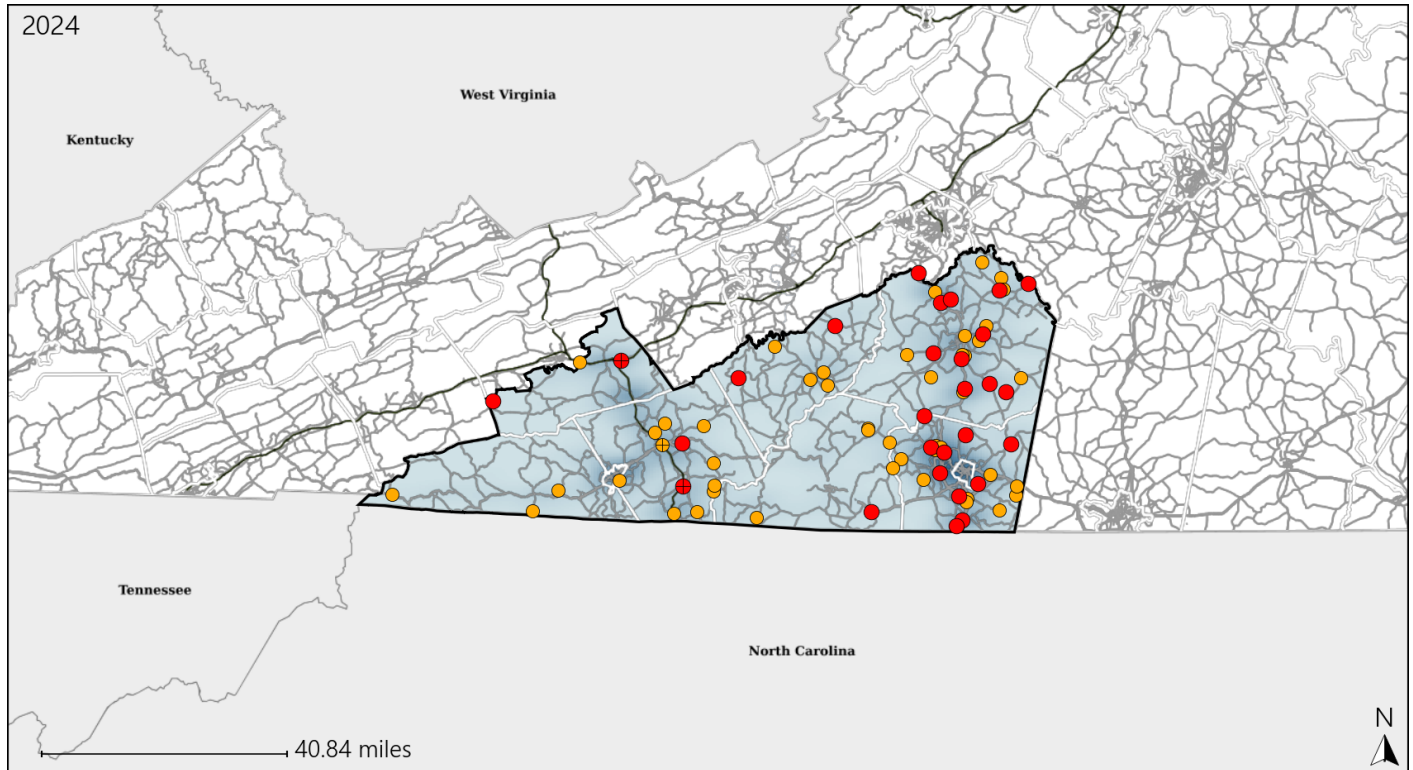


Available Crash Data - Calendar Year (CY)	CY 2021	CY 2022	CY 2023	CY 2024
Total Crashes	3319	3356	3363	3550
Fatal Crashes	34	52	37	49
Injury Crashes	861	900	878	864
Alcohol-Related Fatal Crashes	8	11	10	17
Percent of Alcohol-Related Fatal Crashes to Total Fatal Crashes	24%	21%	27%	35%
Alcohol-Related Injury Crashes	67	74	71	70
Percent of Alcohol-Related Injury Crashes to Total Injury Crashes	8%	8%	8%	8%

Virginia Senate District 7 Speed Crash Statistics

Report Generated March, 2025

	Count	Highest Time Period(s)	Highest Day(s)	Highest Month(s)
Fatal Crashes	28	Midnight - 2:59am	Saturday	January • March
Resulting Fatalities	29	(29%)	(32%)	(28%)
Serious Injury Crashes	49	3:00pm - 5:59pm	Saturday	June
		(41%)	(24%)	(18%)



Senate District 7 Speed-Related Crashes

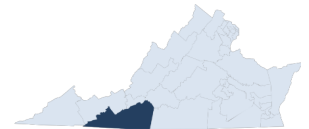
Interstate Crashes

Non-interstate Crashes

- Fatal
- Serious Injury

- Fatal
- Serious Injury

The blue gradient represents the density of all speed-related crashes.

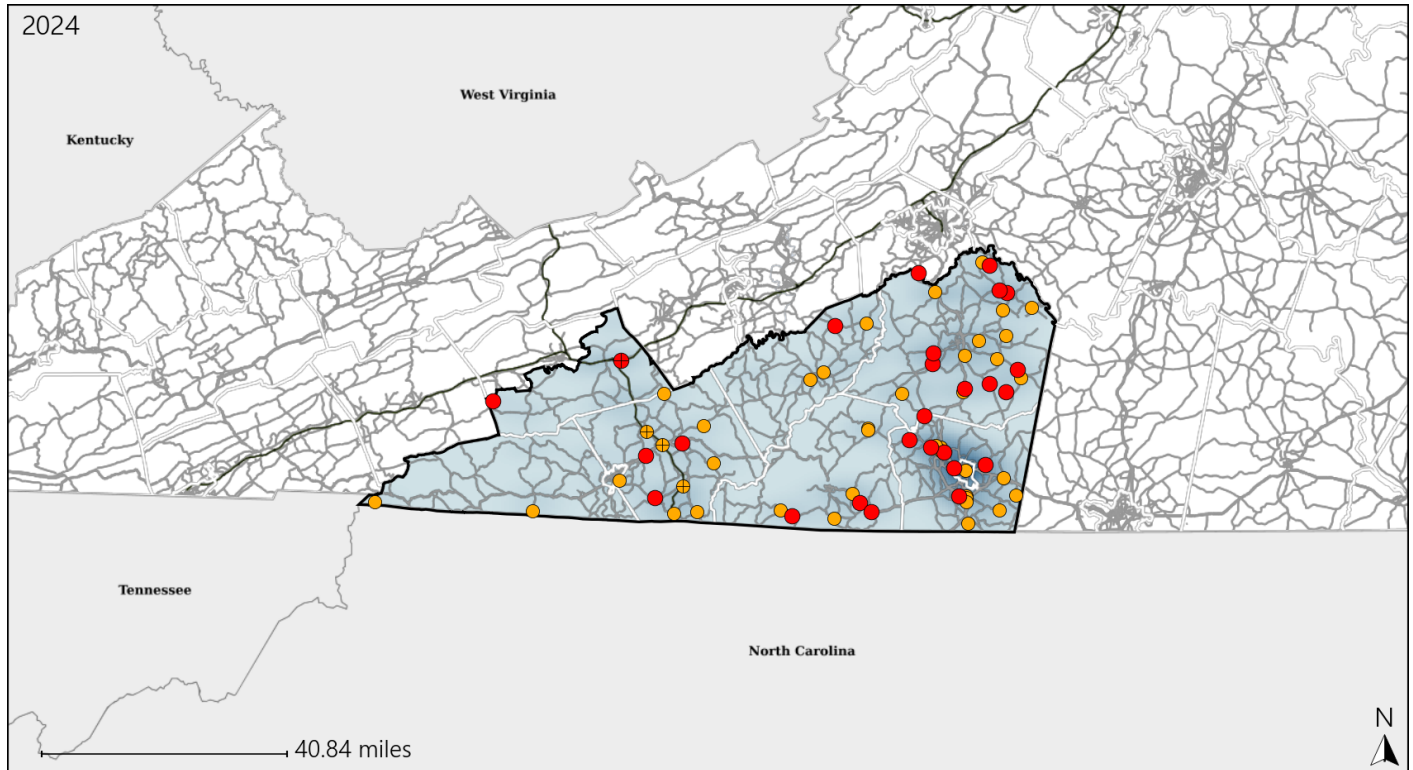


Available Crash Data - Calendar Year (CY)	CY 2021	CY 2022	CY 2023	CY 2024
Total Crashes	3319	3356	3363	3550
Fatal Crashes	34	52	37	49
Injury Crashes	861	900	878	864
Speed-Related Fatal Crashes	18	25	18	28
Percent of Speed-Related Fatal Crashes to Total Fatal Crashes	53%	48%	49%	57%
Speed-Related Injury Crashes	220	246	245	216
Percent of Speed-Related Injury Crashes to Total Injury Crashes	26%	27%	28%	25%

Virginia Senate District 7 Unrestrained Crash Statistics

Report Generated March, 2025

	Count	Highest Time Period(s)	Highest Day(s)	Highest Month(s)
Fatal Crashes	26	3:00pm - 5:59pm	Friday • Tuesday	April • January
Unrestrained Fatalities	26	(23%)	(38%)	(30%)
Serious Injury Crashes	41	3:00pm - 5:59pm	Saturday • Thursday	March
		(34%)	(44%)	(17%)



Senate District 7 Unrestrained-Related Crashes

Interstate Crashes

Non-interstate Crashes

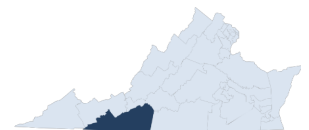
● Fatal

● Fatal

⊕ Serious Injury

● Serious Injury

The blue gradient represents the density of all unrestrained-related crashes.

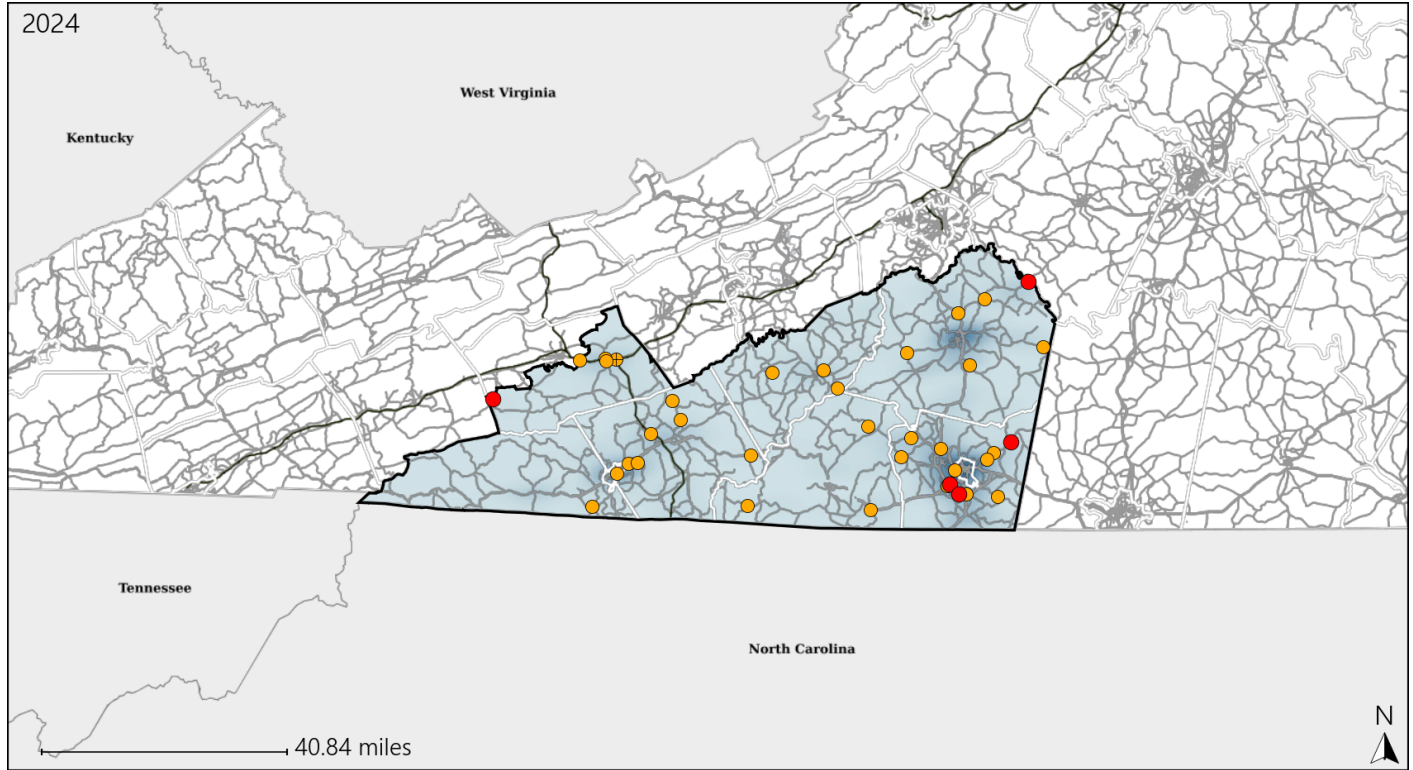


Available Crash Data - Calendar Year (CY)	CY 2021	CY 2022	CY 2023	CY 2024
Total Crashes	3319	3356	3363	3550
Fatalities	39	56	40	53
Injuries	1182	1296	1269	1284
Unrestrained Fatalities	18	28	13	26
Percent of Unrestrained Fatalities to Total Fatalities	46%	50%	33%	49%
Unrestrained Injuries	136	147	135	127
Percent of Unrestrained Injuries to Total Injuries	12%	11%	11%	10%

Virginia Senate District 7 Distracted Driving Crash Statistics

Report Generated March, 2025

	Count	Highest Time Period(s)	Highest Day(s)	Highest Month(s)
Fatal Crashes	5	3:00pm - 5:59pm	Saturday	September
Resulting Fatalities	6	(40%)	(60%)	(40%)
Serious Injury Crashes	32	3:00pm - 5:59pm	Friday	June
		(28%)	(19%)	(22%)



Senate District 7 Distracted Driving-Related Crashes

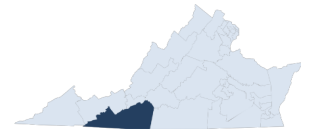
Interstate Crashes

Non-interstate Crashes

- Fatal
- Serious Injury

- Fatal
- Serious Injury

The blue gradient represents the density of all distracted driving-related crashes.



Available Crash Data - Calendar Year (CY)	CY 2021	CY 2022	CY 2023	CY 2024
Total Crashes	3319	3356	3363	3550
Fatal Crashes	34	52	37	49
Injury Crashes	861	900	878	864
Distracted Driving-Related Fatal Crashes	3	6	4	5
Percent of Distracted Driving-Related Fatal Crashes to Total Fatal Crashes	9%	12%	11%	10%
Distracted Driving-Related Injury Crashes	131	154	131	162
Percent of Distracted Driving-Related Injury Crashes to Total Injury Crashes	15%	17%	15%	19%