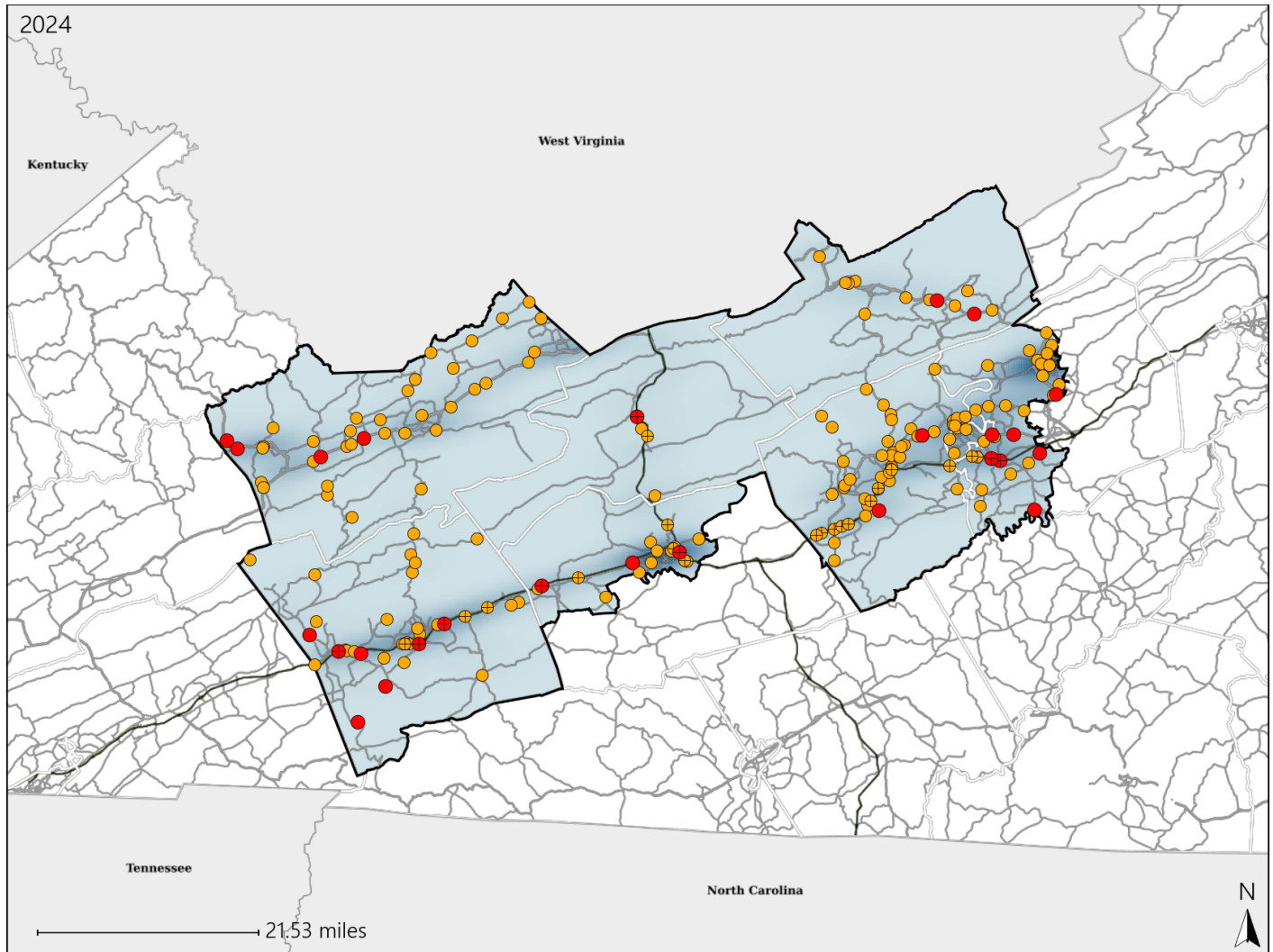


# Virginia Senate District 5 Crash Statistics

Report Generated March, 2025

	Count	Highest Time Period(s)	Highest Day(s)	Highest Month(s)
<b>Fatal Crashes</b>	<b>26</b>	<b>6:00pm - 8:59pm</b>	<b>Sunday</b>	<b>September</b>
<b>Resulting Fatalities</b>	<b>27</b>	<b>(35%)</b>	<b>(35%)</b>	<b>(19%)</b>
<b>Serious Injury Crashes</b>	<b>172</b>	<b>3:00pm - 5:59pm</b> <b>Noon - 2:59pm</b>	<b>Saturday • Sunday</b>	<b>July</b>
		<b>(38%)</b>	<b>(32%)</b>	<b>(14%)</b>



## Senate District 5 Crashes

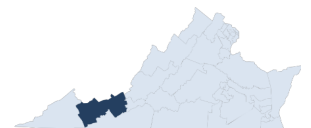
### Interstate Crashes

- Fatal
- ⊕ Serious Injury

### Non-interstate Crashes

- Fatal
- Serious Injury

The blue gradient represents the density of all crashes.



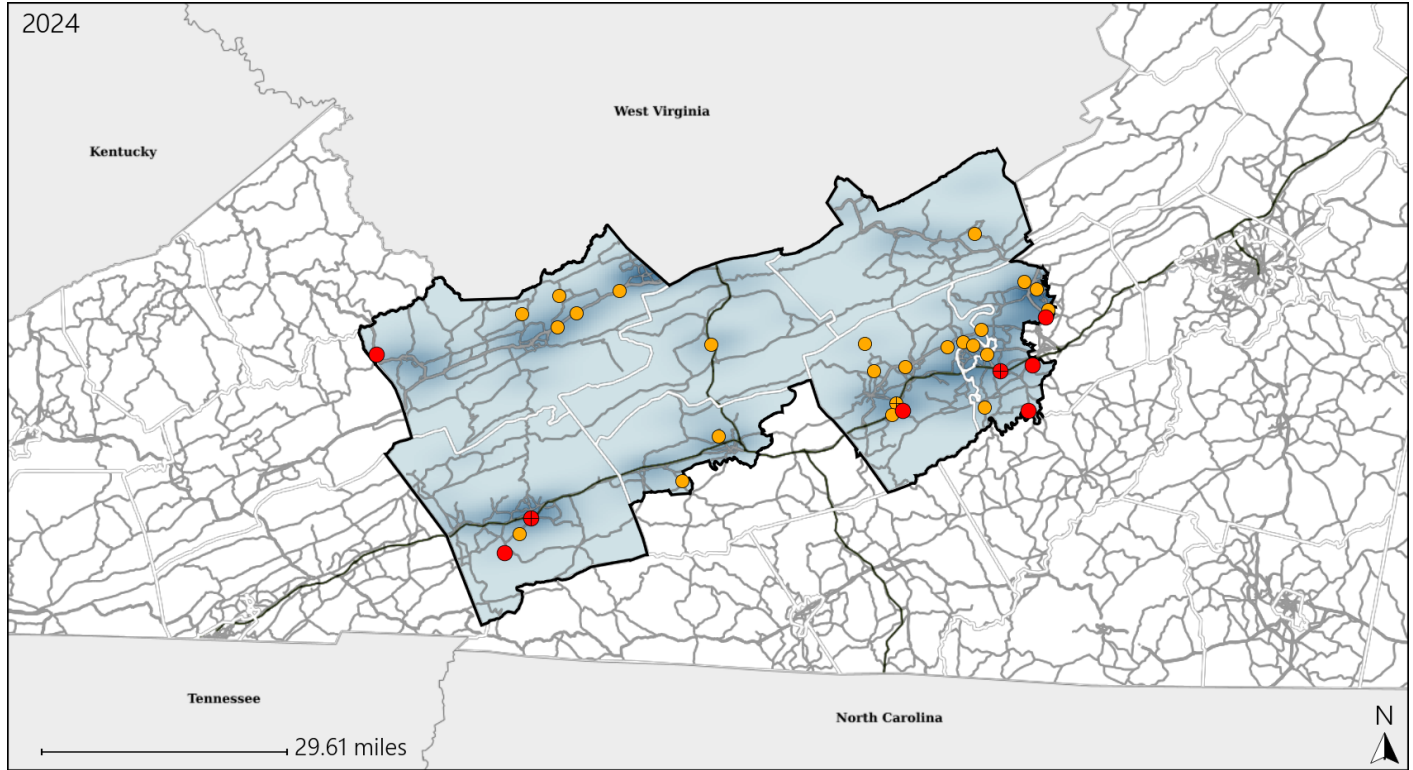
Available Crash Data - Calendar Year (CY)	CY 2021	CY 2022	CY 2023	CY 2024
Total Crashes	3252	3656	3522	3642
Fatal Crashes	32	28	30	26
Injury Crashes	1007	1099	1050	1119

Report of Crashes for January 1<sup>st</sup> - December 31<sup>st</sup>, 2024

# Virginia Senate District 5 Alcohol Crash Statistics

Report Generated March, 2025

	Count	Highest Time Period(s)	Highest Day(s)	Highest Month(s)
<b>Fatal Crashes</b>	<b>8</b>	<b>6:00pm - 8:59pm</b>	<b>Sunday</b>	<b>October</b>
<b>Resulting Fatalities</b>	<b>8</b>	<b>(38%)</b>	<b>(50%)</b>	<b>(25%)</b>
<b>Serious Injury Crashes</b>	<b>24</b>	<b>Midnight - 2:59am</b>	<b>Saturday</b>	<b>May</b>
		<b>(29%)</b>	<b>(25%)</b>	<b>(17%)</b>



## Senate District 5 Alcohol-Related Crashes

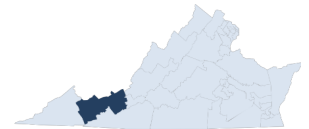
Interstate Crashes

Non-interstate Crashes

- Fatal
- Serious Injury

- Fatal
- Serious Injury

The blue gradient represents the density of all alcohol-related crashes.

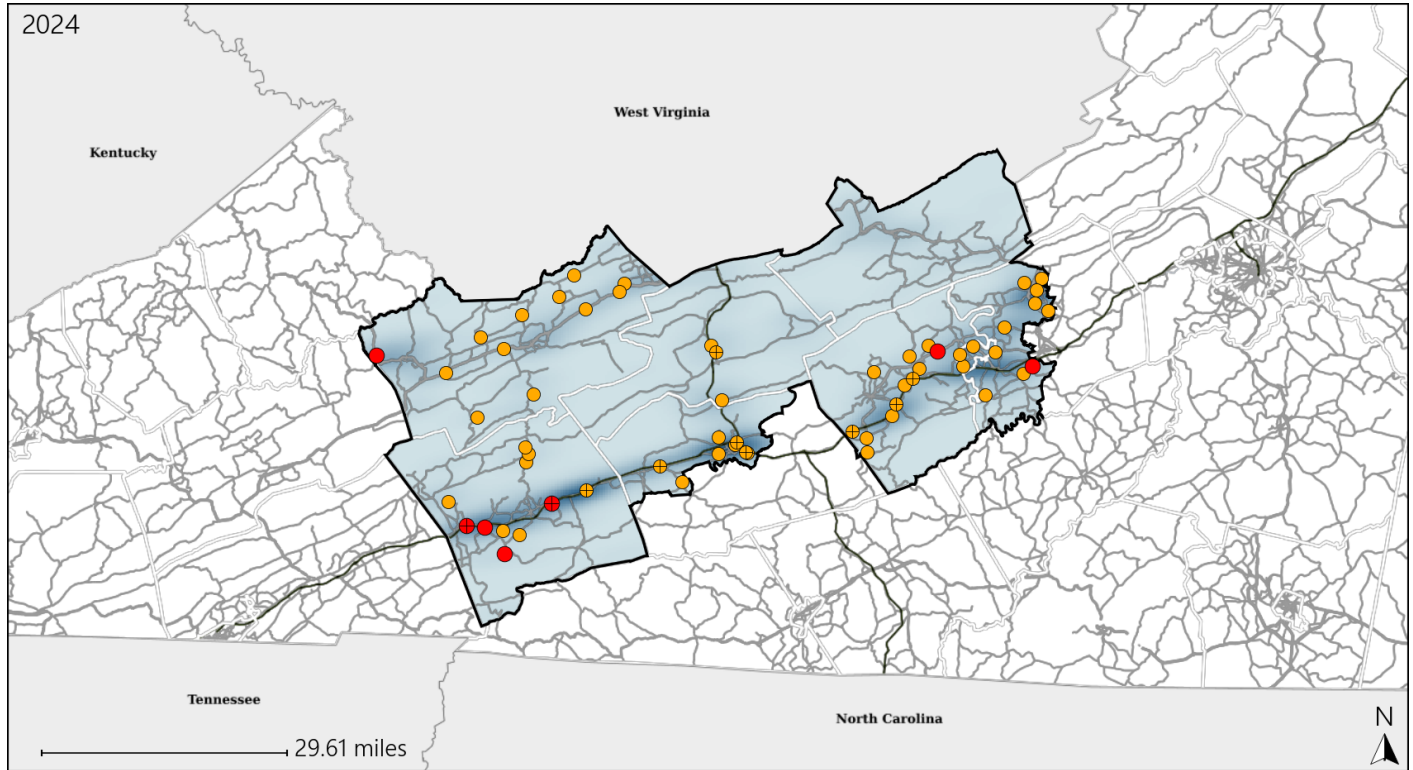


Available Crash Data - Calendar Year (CY)	CY 2021	CY 2022	CY 2023	CY 2024
Total Crashes	3252	3656	3522	3642
Fatal Crashes	32	28	30	26
Injury Crashes	1007	1099	1050	1119
Alcohol-Related Fatal Crashes	6	1	5	8
Percent of Alcohol-Related Fatal Crashes to Total Fatal Crashes	19%	4%	17%	31%
Alcohol-Related Injury Crashes	56	80	69	84
Percent of Alcohol-Related Injury Crashes to Total Injury Crashes	6%	7%	7%	8%

# Virginia Senate District 5 Speed Crash Statistics

Report Generated March, 2025

	Count	Highest Time Period(s)	Highest Day(s)	Highest Month(s)
<b>Fatal Crashes</b>	<b>7</b>	<b>3:00pm - 5:59pm</b>	<b>Sunday</b>	<b>September</b>
<b>Resulting Fatalities</b>	<b>7</b>	<b>6:00am - 8:59am</b> (58%)	<b>(71%)</b>	<b>(29%)</b>
<b>Serious Injury Crashes</b>	<b>52</b>	<b>3:00pm - 5:59pm</b> (19%)	<b>Saturday</b> (27%)	<b>June</b> (19%)



## Senate District 5 Speed-Related Crashes

Interstate Crashes

Non-interstate Crashes

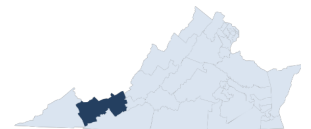
● Fatal

● Fatal

⊕ Serious Injury

⊕ Serious Injury

The blue gradient represents the density of all speed-related crashes.

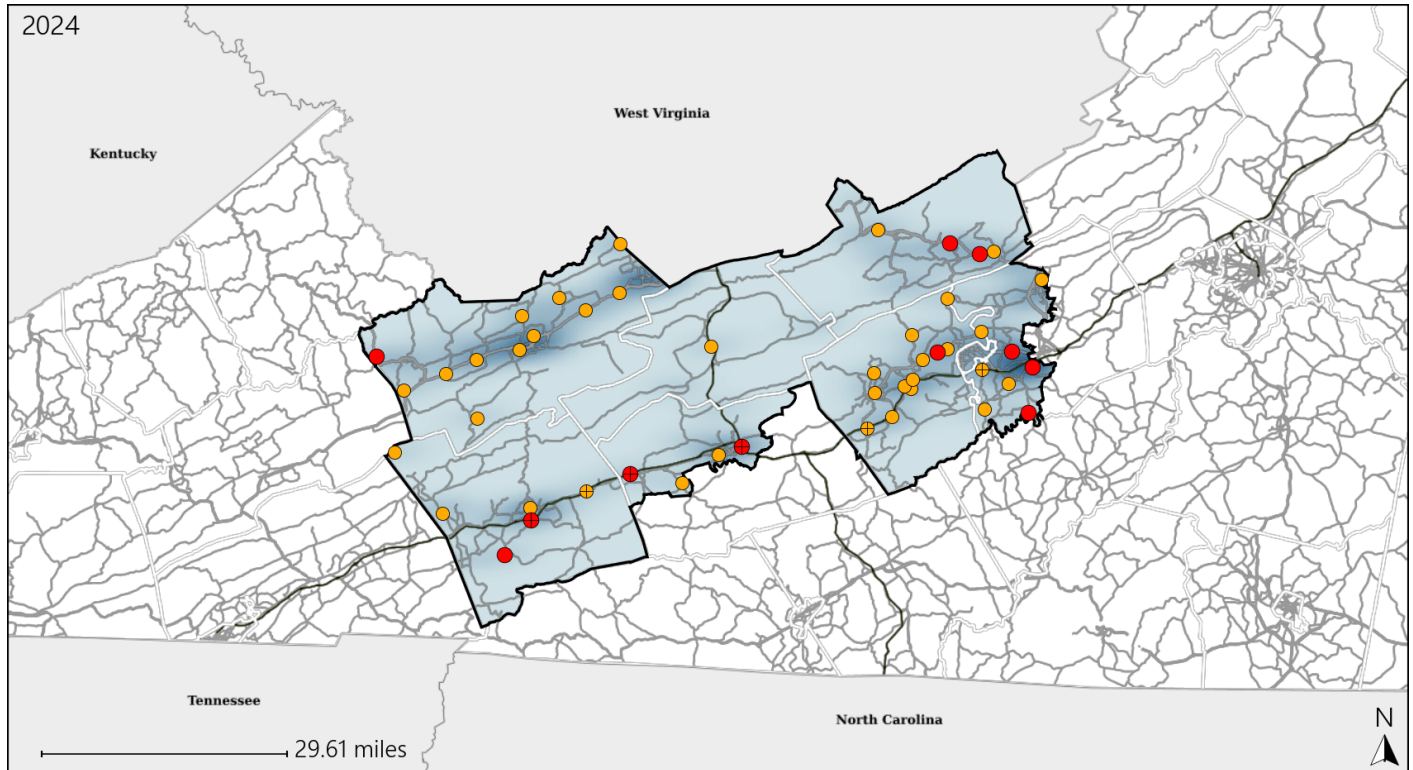


Available Crash Data - Calendar Year (CY)	CY 2021	CY 2022	CY 2023	CY 2024
Total Crashes	3252	3656	3522	3642
Fatal Crashes	32	28	30	26
Injury Crashes	1007	1099	1050	1119
Speed-Related Fatal Crashes	15	12	14	7
Percent of Speed-Related Fatal Crashes to Total Fatal Crashes	47%	43%	47%	27%
Speed-Related Injury Crashes	230	268	223	245
Percent of Speed-Related Injury Crashes to Total Injury Crashes	23%	24%	21%	22%

# Virginia Senate District 5 Unrestrained Crash Statistics

Report Generated March, 2025

	Count	Highest Time Period(s)	Highest Day(s)	Highest Month(s)
<b>Fatal Crashes</b>	<b>11</b>	<b>6:00pm - 8:59pm</b>	<b>Sunday</b>	<b>August • October</b>
<b>Unrestrained Fatalities</b>	<b>12</b>	<b>(36%)</b>	<b>(36%)</b>	<b>(36%)</b>
<b>Serious Injury Crashes</b>	<b>36</b>	<b>9:00am - 11:59am</b>	<b>Saturday • Tuesday</b>	<b>December • June</b>
		<b>(19%)</b>	<b>(50%)</b>	<b>(28%)</b>



## Senate District 5 Unrestrained-Related Crashes

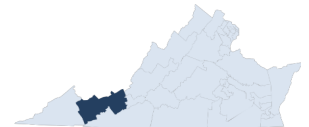
Interstate Crashes

Non-interstate Crashes

- Fatal
- Serious Injury

- Fatal
- Serious Injury

The blue gradient represents the density of all unrestrained-related crashes.



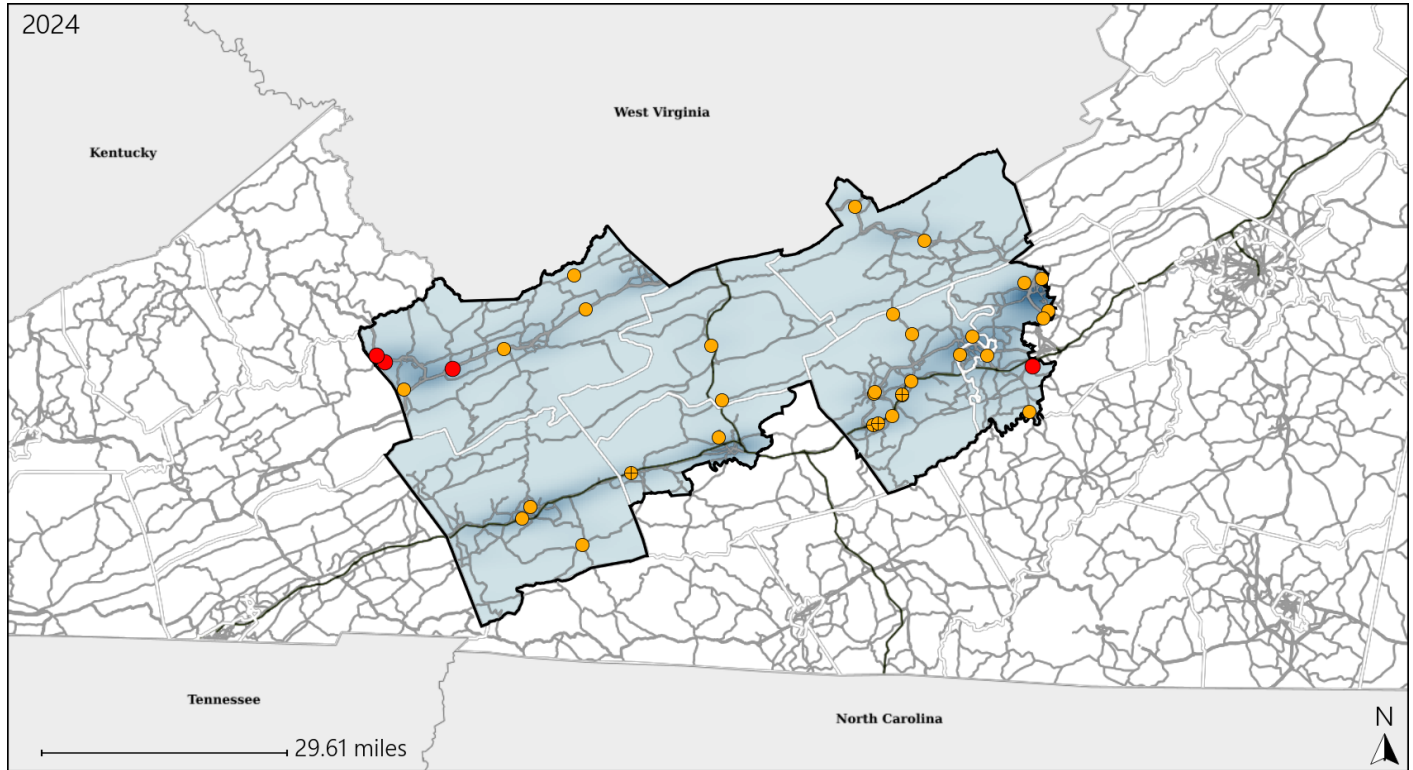
Available Crash Data - Calendar Year (CY)	CY 2021	CY 2022	CY 2023	CY 2024
Total Crashes	3252	3656	3522	3642
Fatalities	33	31	33	27
Injuries	1371	1575	1536	1580
Unrestrained Fatalities	12	10	13	12
Percent of Unrestrained Fatalities to Total Fatalities	36%	32%	39%	44%
Unrestrained Injuries	133	162	141	122
Percent of Unrestrained Injuries to Total Injuries	10%	10%	9%	8%



# Virginia Senate District 5 Distracted Driving Crash Statistics

Report Generated March, 2025

	Count	Highest Time Period(s)	Highest Day(s)	Highest Month(s)
<b>Fatal Crashes</b>	<b>4</b>	<b>6:00am - 8:59am</b>	<b>Sunday</b>	<b>April • January</b>
<b>Resulting Fatalities</b>	<b>4</b>	<b>6:00pm - 8:59pm</b> (50%)	<b>(50%)</b>	<b>(50%)</b>
<b>Serious Injury Crashes</b>	<b>31</b>	<b>6:00pm - 8:59pm</b> (23%)	<b>Friday • Thursday</b> (46%)	<b>July</b> (19%)



## Senate District 5 Distracted Driving-Related Crashes

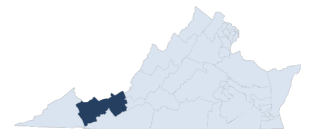
Interstate Crashes

Non-interstate Crashes

- Fatal
- Serious Injury

- Fatal
- Serious Injury

The blue gradient represents the density of all distracted driving-related crashes.



Available Crash Data - Calendar Year (CY)	CY 2021	CY 2022	CY 2023	CY 2024
Total Crashes	3252	3656	3522	3642
Fatal Crashes	32	28	30	26
Injury Crashes	1007	1099	1050	1119
Distracted Driving-Related Fatal Crashes	7	3	2	4
Percent of Distracted Driving-Related Fatal Crashes to Total Fatal Crashes	22%	11%	7%	15%
Distracted Driving-Related Injury Crashes	191	208	215	192
Percent of Distracted Driving-Related Injury Crashes to Total Injury Crashes	19%	19%	20%	17%