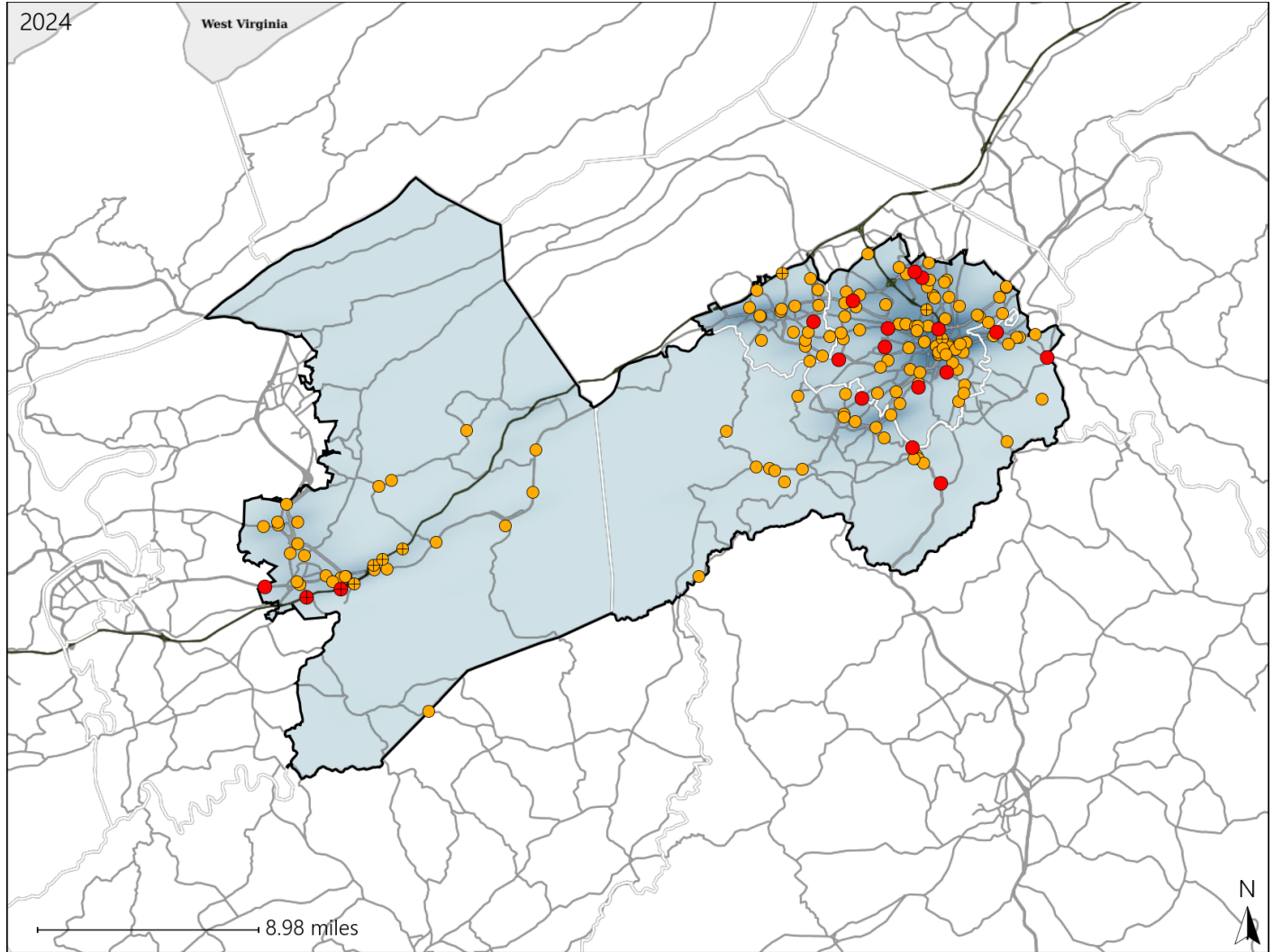


# Virginia Senate District 4 Crash Statistics

Report Generated March, 2025

	Count	Highest Time Period(s)	Highest Day(s)	Highest Month(s)
<b>Fatal Crashes</b>	<b>18</b>	<b>9:00pm - 11:59pm</b>	<b>Saturday • Thursday</b>	<b>November</b>
<b>Resulting Fatalities</b>	<b>18</b>	<b>(33%)</b>	<b>(44%)</b>	<b>(22%)</b>
<b>Serious Injury Crashes</b>	<b>140</b>	<b>3:00pm - 5:59pm</b>	<b>Thursday</b>	<b>June • March</b>
		<b>(27%)</b>	<b>(19%)</b>	<b>(24%)</b>



## Senate District 4 Crashes

Interstate Crashes

- Fatal
- Serious Injury

Non-interstate Crashes

- Fatal
- Serious Injury

The blue gradient represents the density of all crashes.

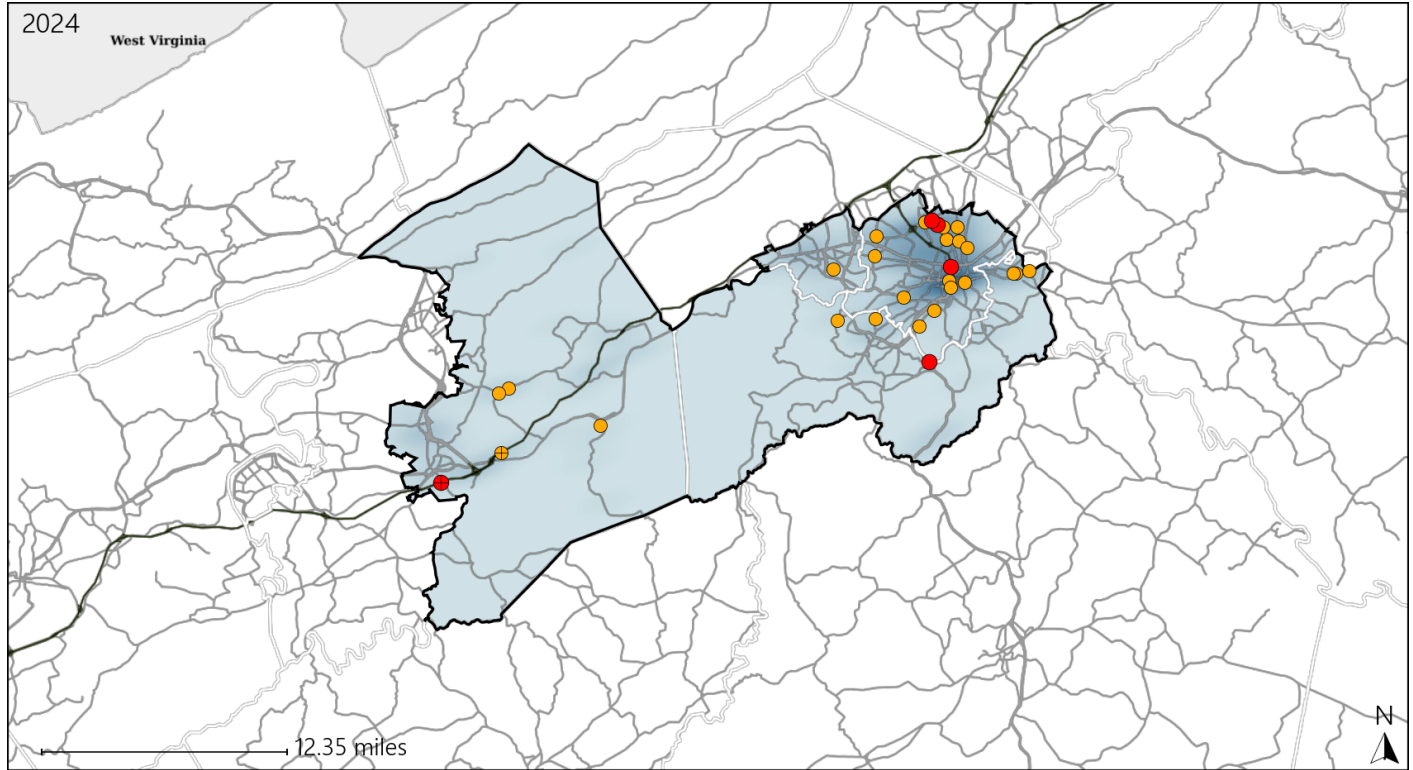


Available Crash Data - Calendar Year (CY)	CY 2021	CY 2022	CY 2023	CY 2024
Total Crashes	3655	4039	4241	4066
Fatal Crashes	13	15	15	18
Injury Crashes	1035	1089	1114	1082

# Virginia Senate District 4 Alcohol Crash Statistics

Report Generated March, 2025

	Count	Highest Time Period(s)	Highest Day(s)	Highest Month(s)
<b>Fatal Crashes</b>	<b>5</b>	<b>9:00pm - 11:59pm</b>	<b>Tuesday</b>	<b>December</b>
<b>Resulting Fatalities</b>	<b>5</b>	<b>(60%)</b>	<b>(40%)</b>	<b>(40%)</b>
<b>Serious Injury Crashes</b>	<b>25</b>	<b>Midnight - 2:59am</b>	<b>Friday</b>	<b>March</b>
		<b>(32%)</b>	<b>(24%)</b>	<b>(20%)</b>



## Senate District 4 Alcohol-Related Crashes

Interstate Crashes

Non-interstate Crashes

- Fatal
- Serious Injury

- Fatal
- Serious Injury

The blue gradient represents the density of all alcohol-related crashes.

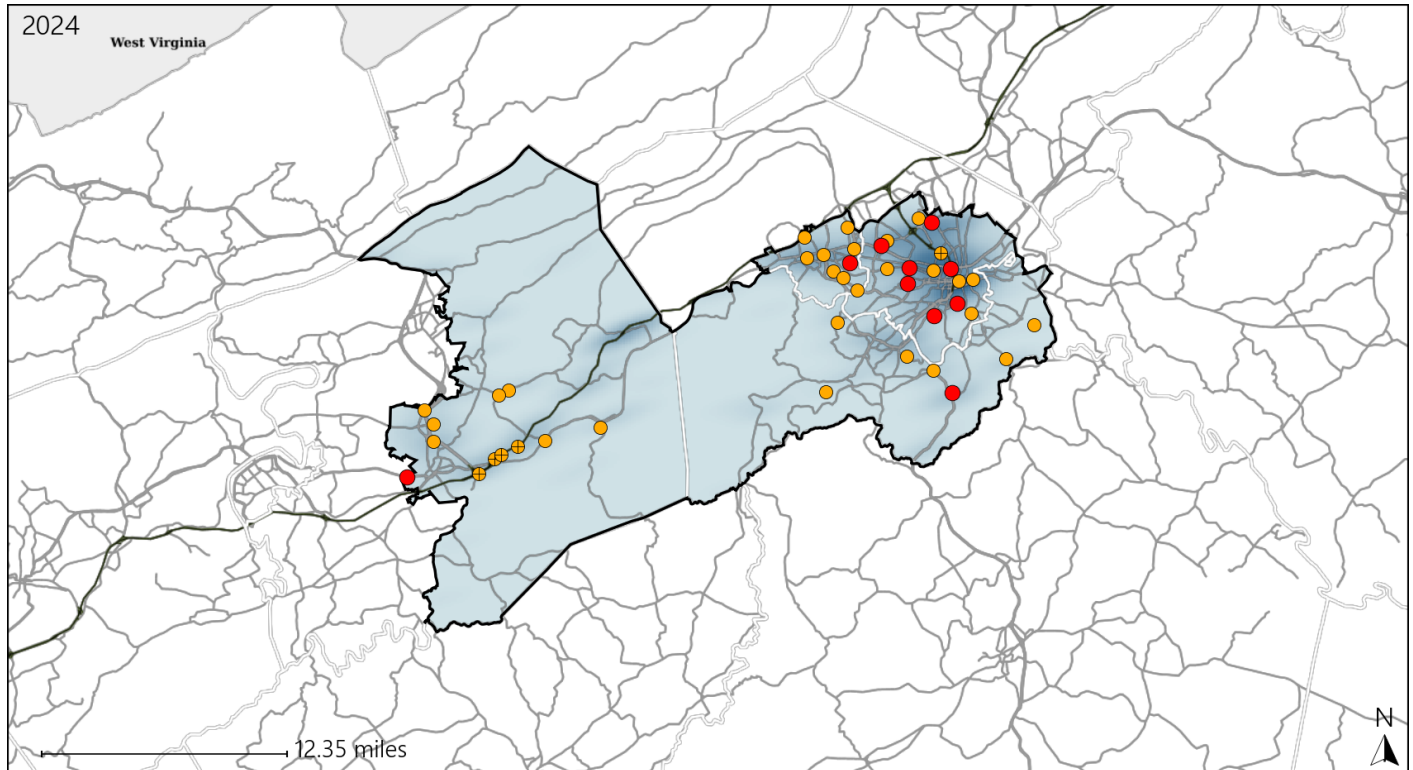


Available Crash Data - Calendar Year (CY)	CY 2021	CY 2022	CY 2023	CY 2024
Total Crashes	3655	4039	4241	4066
Fatal Crashes	13	15	15	18
Injury Crashes	1035	1089	1114	1082
Alcohol-Related Fatal Crashes	2	3	3	5
Percent of Alcohol-Related Fatal Crashes to Total Fatal Crashes	15%	20%	20%	28%
Alcohol-Related Injury Crashes	82	84	64	78
Percent of Alcohol-Related Injury Crashes to Total Injury Crashes	8%	8%	6%	7%

# Virginia Senate District 4 Speed Crash Statistics

Report Generated March, 2025

	Count	Highest Time Period(s)	Highest Day(s)	Highest Month(s)
<b>Fatal Crashes</b>	<b>10</b>	<b>9:00pm - 11:59pm</b>	<b>Saturday</b>	<b>May</b>
<b>Resulting Fatalities</b>	<b>10</b>	<b>(30%)</b>	<b>(40%)</b>	<b>(30%)</b>
<b>Serious Injury Crashes</b>	<b>33</b>	<b>6:00pm - 8:59pm</b>	<b>Saturday</b>	<b>May</b>
		<b>(24%)</b>	<b>(24%)</b>	<b>(15%)</b>



## Senate District 4 Speed-Related Crashes

Interstate Crashes

Non-interstate Crashes

- Fatal
- Serious Injury

- Fatal
- Serious Injury

The blue gradient represents the density of all speed-related crashes.

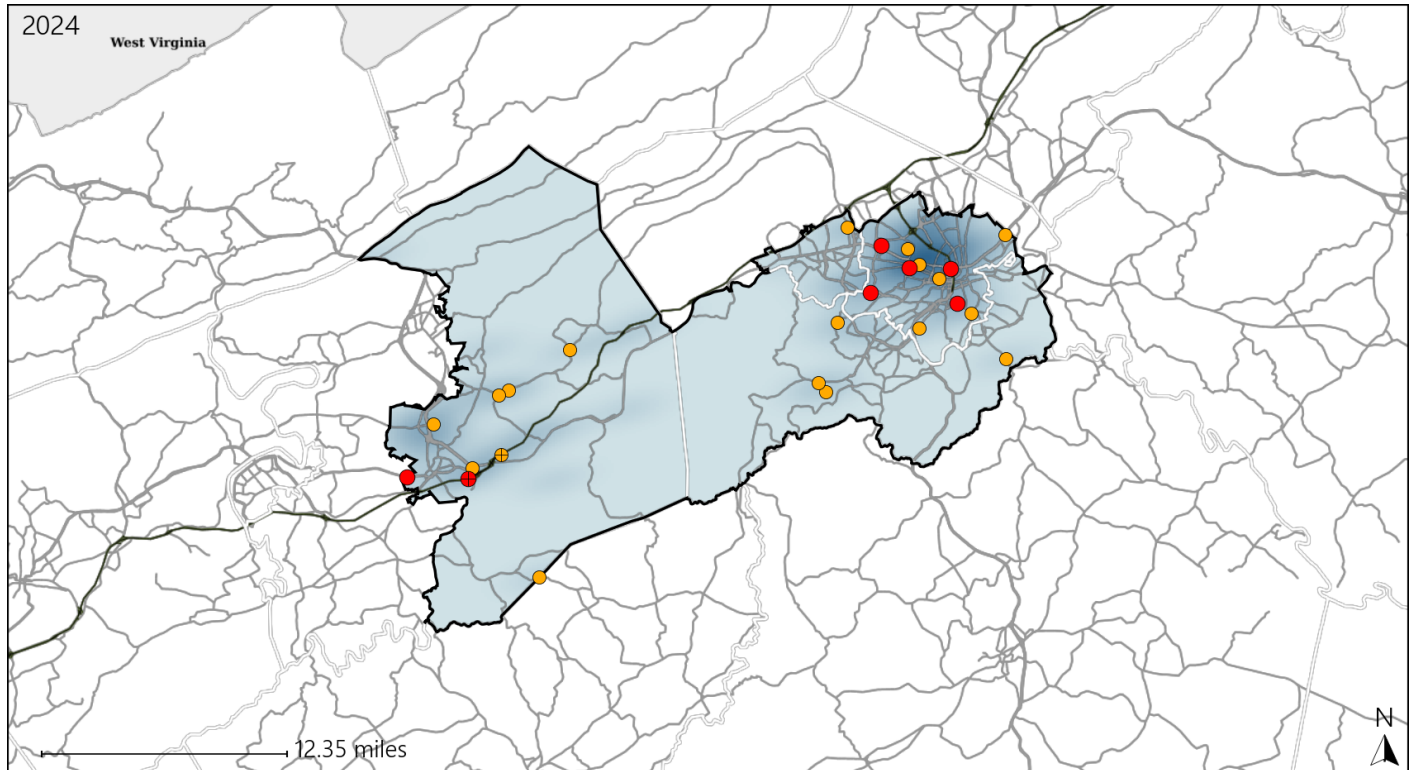


Available Crash Data - Calendar Year (CY)	CY 2021	CY 2022	CY 2023	CY 2024
Total Crashes	3655	4039	4241	4066
Fatal Crashes	13	15	15	18
Injury Crashes	1035	1089	1114	1082
Speed-Related Fatal Crashes	3	7	9	10
Percent of Speed-Related Fatal Crashes to Total Fatal Crashes	23%	47%	60%	56%
Speed-Related Injury Crashes	194	241	212	163
Percent of Speed-Related Injury Crashes to Total Injury Crashes	19%	22%	19%	15%

# Virginia Senate District 4 Unrestrained Crash Statistics

Report Generated March, 2025

	Count	Highest Time Period(s)	Highest Day(s)	Highest Month(s)
<b>Fatal Crashes</b>	<b>7</b>	<b>9:00pm - 11:59pm</b>	<b>Saturday</b>	<b>November</b>
<b>Unrestrained Fatalities</b>	<b>7</b>	(57%)	(43%)	(43%)
<b>Serious Injury Crashes</b>	<b>18</b>	<b>6:00pm - 8:59pm</b>	<b>Friday * Sunday</b>	<b>March</b>
		(28%)	(44%)	(33%)



## Senate District 4 Unrestrained-Related Crashes

Interstate Crashes

Non-interstate Crashes

- Fatal
- Serious Injury

- Fatal
- Serious Injury

The blue gradient represents the density of all unrestrained-related crashes.



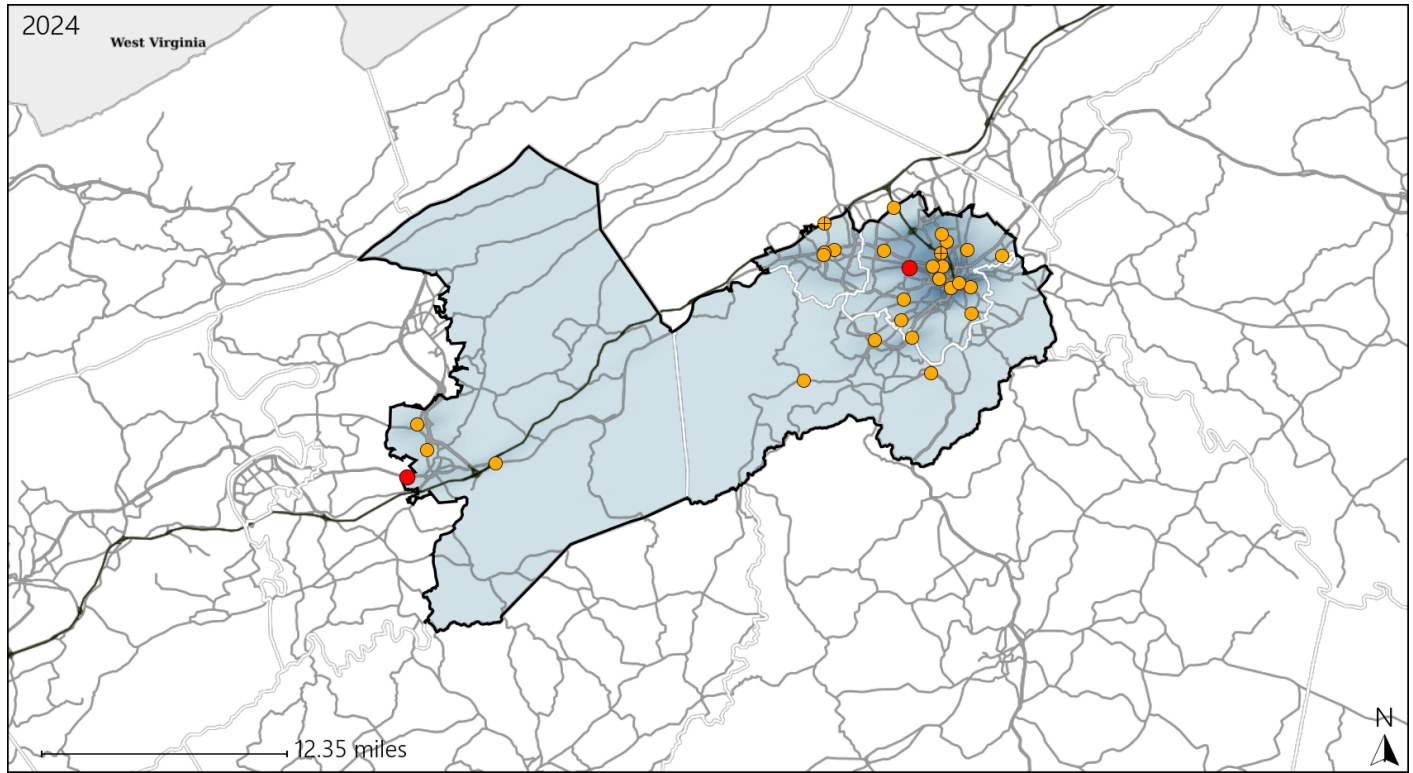
Available Crash Data - Calendar Year (CY)	CY 2021	CY 2022	CY 2023	CY 2024
Total Crashes	3655	4039	4241	4066
Fatalities	13	18	19	18
Injuries	1460	1559	1585	1565
Unrestrained Fatalities	4	5	10	7
Percent of Unrestrained Fatalities to Total Fatalities	31%	28%	53%	39%
Unrestrained Injuries	99	94	80	72
Percent of Unrestrained Injuries to Total Injuries	7%	6%	5%	5%



# Virginia Senate District 4 Distracted Driving Crash Statistics

Report Generated March, 2025

	Count	Highest Time Period(s)	Highest Day(s)	Highest Month(s)
<b>Fatal Crashes</b>	<b>2</b>	9:00pm - 11:59pm	Saturday • Thursday	August • May
<b>Resulting Fatalities</b>	<b>2</b>	Midnight - 2:59am (100%)	(100%)	(100%)
<b>Serious Injury Crashes</b>	<b>27</b>	6:00pm - 8:59pm	Thursday	June
		Noon - 2:59pm (52%)	(22%)	(19%)



## Senate District 4 Distracted Driving-Related Crashes

Interstate Crashes

Non-interstate Crashes

● Fatal

● Fatal

⊕ Serious Injury

⊕ Serious Injury

The blue gradient represents the density of all distracted driving-related crashes.



Available Crash Data - Calendar Year (CY)	CY 2021	CY 2022	CY 2023	CY 2024
Total Crashes	3655	4039	4241	4066
Fatal Crashes	13	15	15	18
Injury Crashes	1035	1089	1114	1082
Distracted Driving-Related Fatal Crashes	4	3	1	2
Percent of Distracted Driving-Related Fatal Crashes to Total Fatal Crashes	31%	20%	7%	11%
Distracted Driving-Related Injury Crashes	225	227	203	198
Percent of Distracted Driving-Related Injury Crashes to Total Injury Crashes	22%	21%	18%	18%