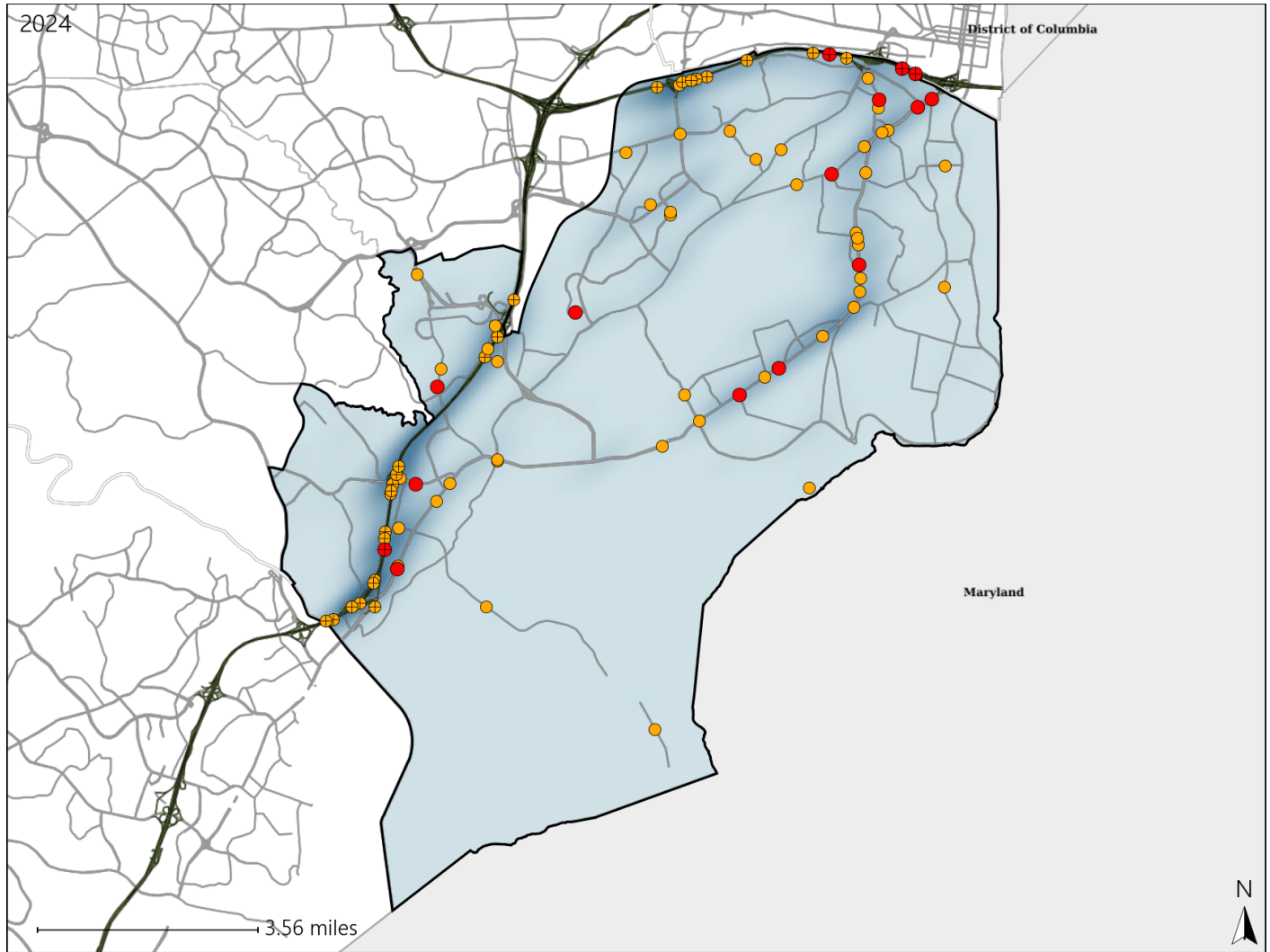


Virginia Senate District 34 Crash Statistics

Report Generated March, 2025

	Count	Highest Time Period(s)	Highest Day(s)	Highest Month(s)
Fatal Crashes	15	3:00am - 5:59am	Sunday	May
Resulting Fatalities	15	(27%)	(27%)	(27%)
Serious Injury Crashes	72	3:00pm - 5:59pm	Monday	May
		(18%)	(18%)	(17%)



Senate District 34 Crashes

Interstate Crashes

- Fatal
- Serious Injury

Non-interstate Crashes

- Fatal
- Serious Injury

The blue gradient represents the density of all crashes.

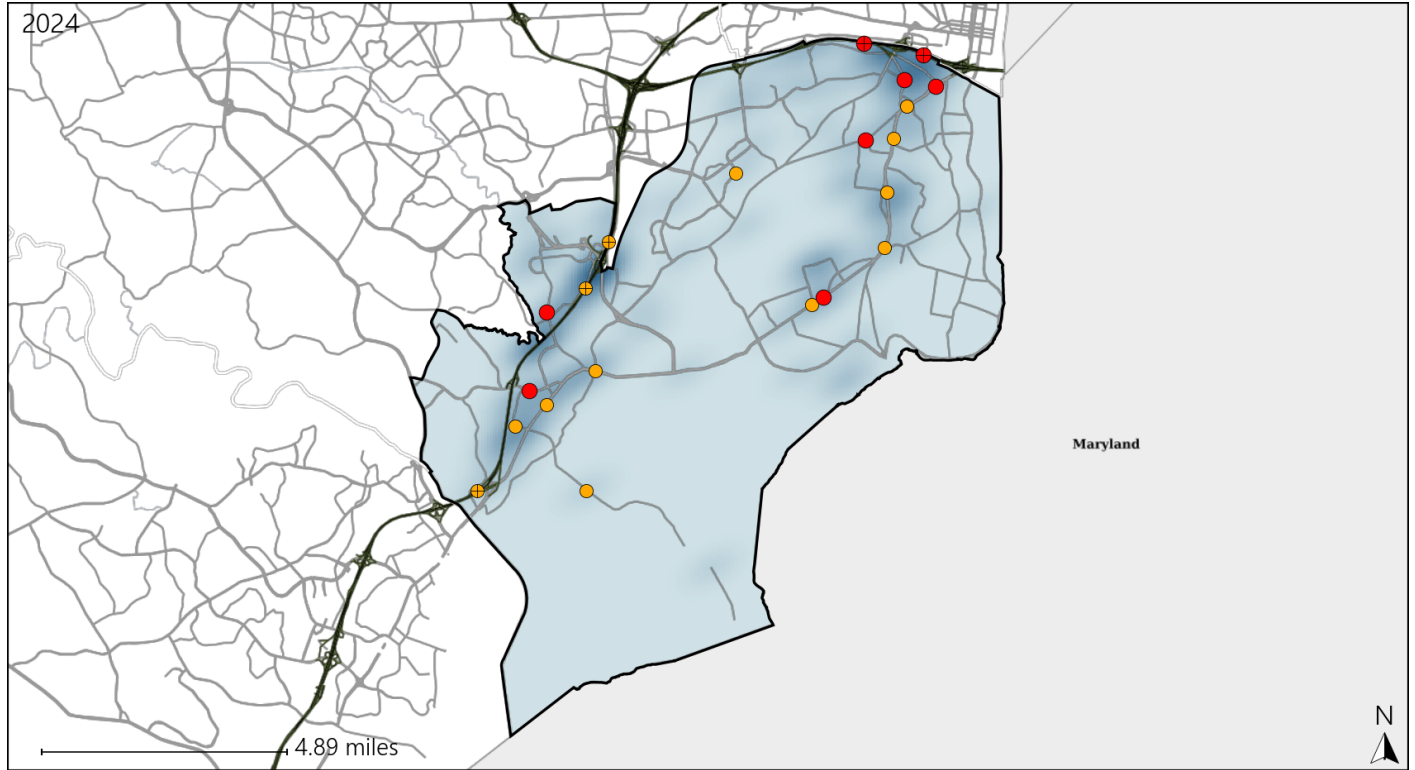


Available Crash Data - Calendar Year (CY)	CY 2021	CY 2022	CY 2023	CY 2024
Total Crashes	1683	2029	2141	2199
Fatal Crashes	12	14	10	15
Injury Crashes	509	585	629	644

Virginia Senate District 34 Alcohol Crash Statistics

Report Generated March, 2025

	Count	Highest Time Period(s)	Highest Day(s)	Highest Month(s)
Fatal Crashes	8	3:00am - 5:59am	Sunday	May
Resulting Fatalities	8	(50%)	(50%)	(38%)
Serious Injury Crashes	13	Midnight - 2:59am	Thursday	October
		(38%)	(31%)	(31%)



Senate District 34 Alcohol-Related Crashes

Interstate Crashes

Non-interstate Crashes

- Fatal
- Serious Injury

- Fatal
- Serious Injury

The blue gradient represents the density of all alcohol-related crashes.

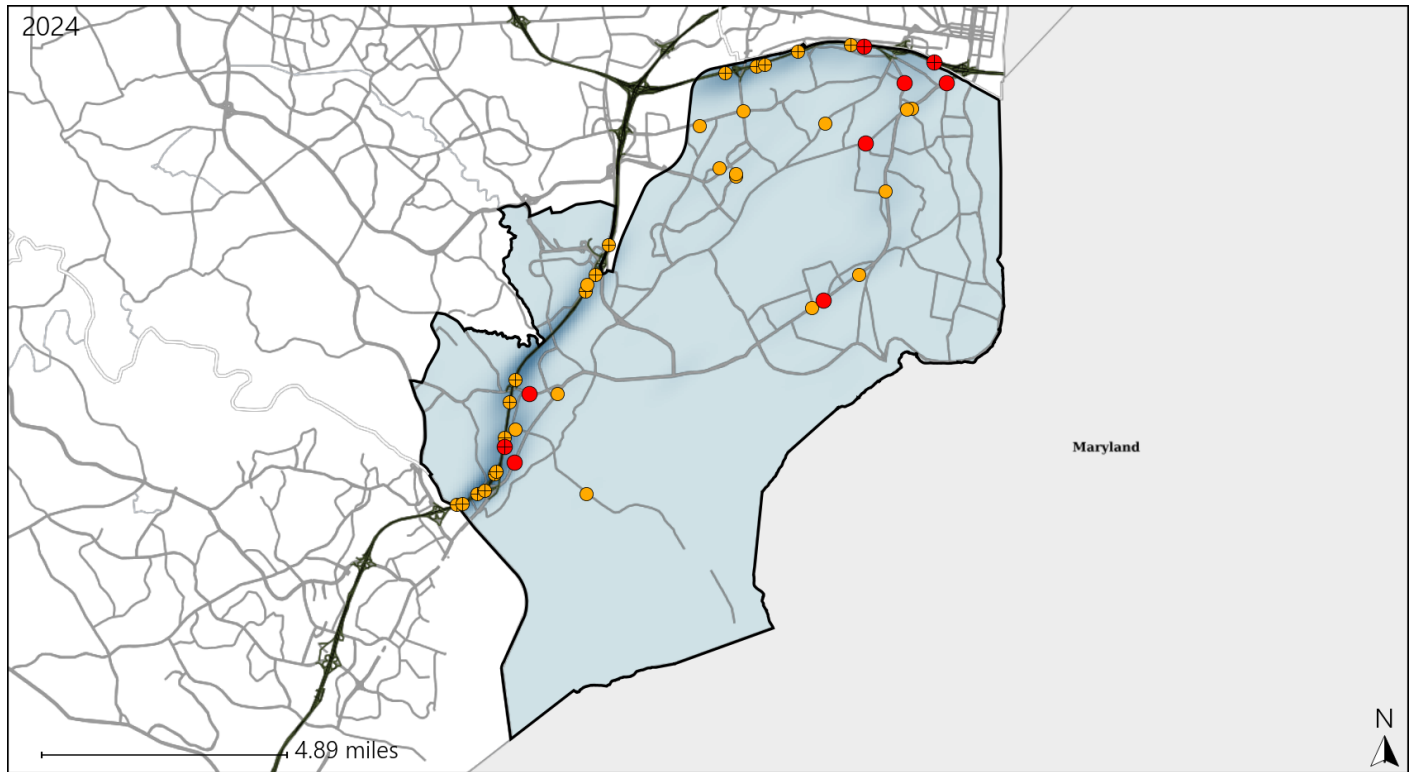


Available Crash Data - Calendar Year (CY)	CY 2021	CY 2022	CY 2023	CY 2024
Total Crashes	1683	2029	2141	2199
Fatal Crashes	12	14	10	15
Injury Crashes	509	585	629	644
Alcohol-Related Fatal Crashes	4	7	6	8
Percent of Alcohol-Related Fatal Crashes to Total Fatal Crashes	33%	50%	60%	53%
Alcohol-Related Injury Crashes	39	34	42	37
Percent of Alcohol-Related Injury Crashes to Total Injury Crashes	8%	6%	7%	6%

Virginia Senate District 34 Speed Crash Statistics

Report Generated March, 2025

	Count	Highest Time Period(s)	Highest Day(s)	Highest Month(s)
Fatal Crashes	9	9:00pm - 11:59pm	Friday • Monday	February • May
Resulting Fatalities	9	(33%)	(44%)	(44%)
Serious Injury Crashes	32	6:00pm - 8:59pm	Monday	May
		9:00am - 11:59am	(22%)	(19%)
		(38%)		



Senate District 34 Speed-Related Crashes

Interstate Crashes

- Fatal
- Serious Injury

Non-interstate Crashes

- Fatal
- Serious Injury

The blue gradient represents the density of all speed-related crashes.



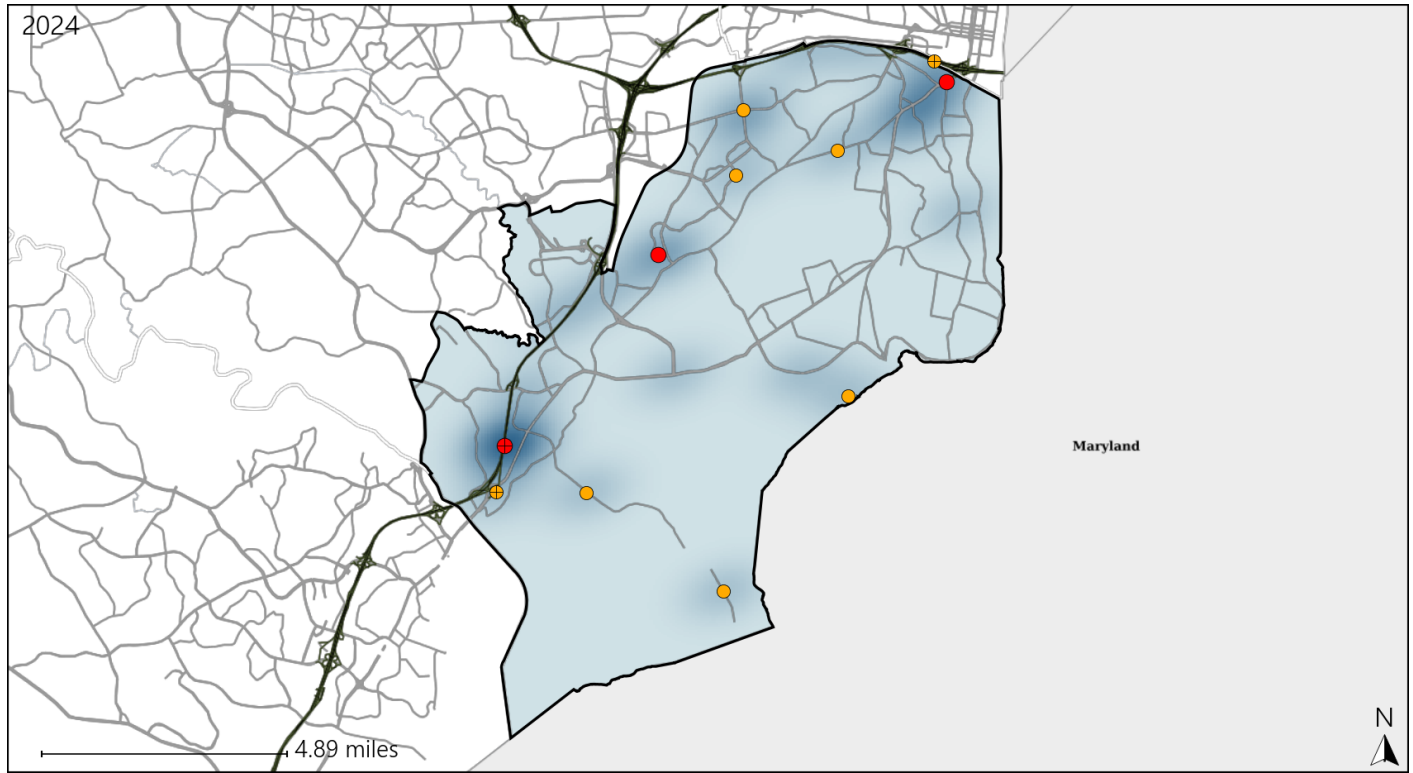
Available Crash Data - Calendar Year (CY)	CY 2021	CY 2022	CY 2023	CY 2024
Total Crashes	1683	2029	2141	2199
Fatal Crashes	12	14	10	15
Injury Crashes	509	585	629	644
Speed-Related Fatal Crashes	5	7	5	9
Percent of Speed-Related Fatal Crashes to Total Fatal Crashes	42%	50%	50%	60%
Speed-Related Injury Crashes	186	181	184	229
Percent of Speed-Related Injury Crashes to Total Injury Crashes	37%	31%	29%	36%

Report of Crashes for January 1st - December 31st, 2024

Virginia Senate District 34 Unrestrained Crash Statistics

Report Generated March, 2025

	Count	Highest Time Period(s)	Highest Day(s)	Highest Month(s)
Fatal Crashes	3	9:00am - 11:59am	Monday	December • May
Unrestrained Fatalities	3	9:00pm - 11:59pm (66%)	(100%)	(66%)
Serious Injury Crashes	8	9:00am - 11:59am Midnight - 2:59am (50%)	Saturday (38%)	November (25%)



Senate District 34 Unrestrained-Related Crashes

Interstate Crashes

Non-interstate Crashes

● Fatal

● Fatal

⊕ Serious Injury

● Serious Injury

The blue gradient represents the density of all unrestrained-related crashes.

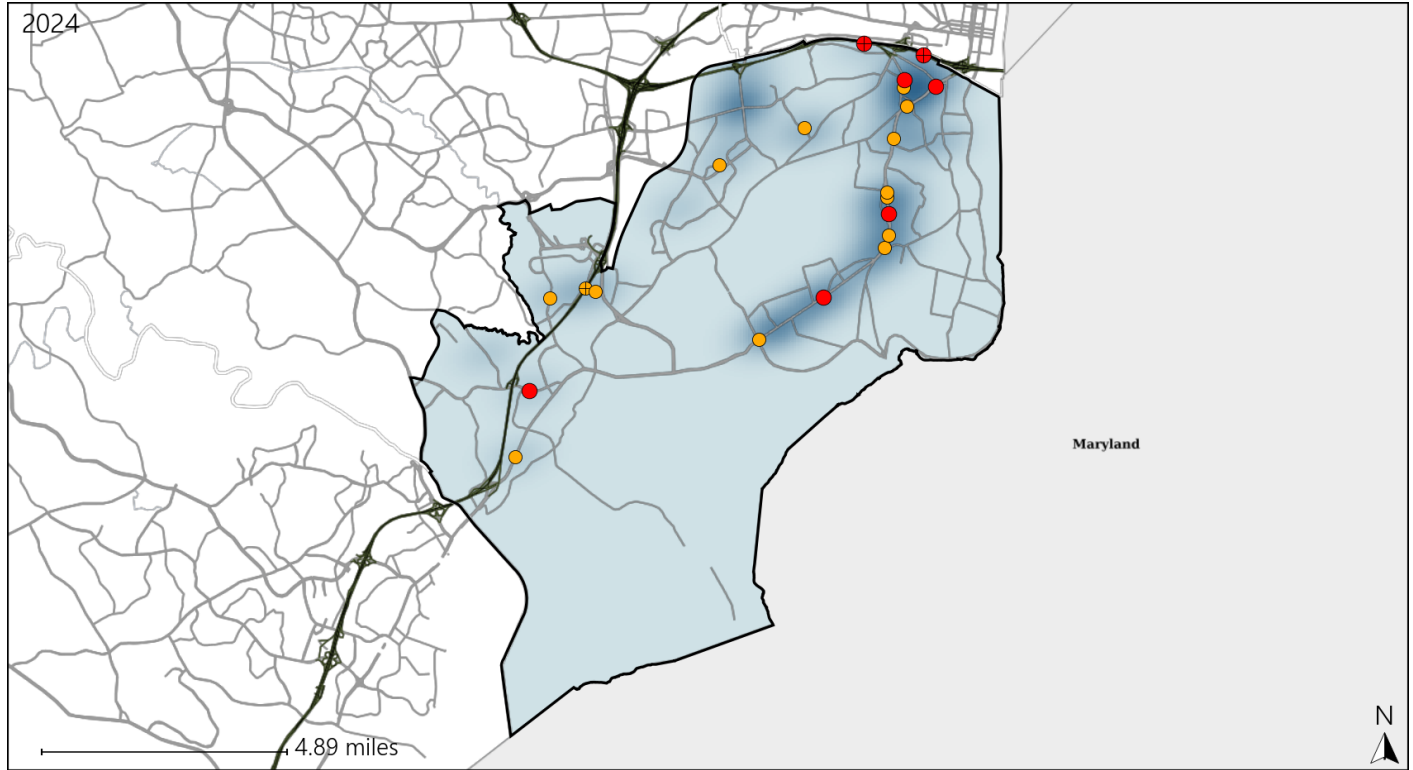


Available Crash Data - Calendar Year (CY)	CY 2021	CY 2022	CY 2023	CY 2024
Total Crashes	1683	2029	2141	2199
Fatalities	12	15	11	15
Injuries	824	951	989	993
Unrestrained Fatalities	2	3	3	3
Percent of Unrestrained Fatalities to Total Fatalities	17%	20%	27%	20%
Unrestrained Injuries	32	24	37	37
Percent of Unrestrained Injuries to Total Injuries	4%	3%	4%	4%

Virginia Senate District 34 Pedestrian Crash Statistics

Report Generated March, 2025

	Count	Highest Time Period(s)	Highest Day(s)	Highest Month(s)
Fatal Crashes	7	3:00am - 5:59am	Sunday	February • March
Pedestrian Fatalities	7	(43%)	(43%)	(58%)
Serious Injury Crashes	14	Midnight - 2:59am	Tuesday • Wednesday	October
		(29%)	(42%)	(29%)



Senate District 34 Pedestrian-Related Crashes

Interstate Crashes

Non-interstate Crashes

● Fatal

● Fatal

● Serious Injury

● Serious Injury

The blue gradient represents the density of all pedestrian-related crashes.

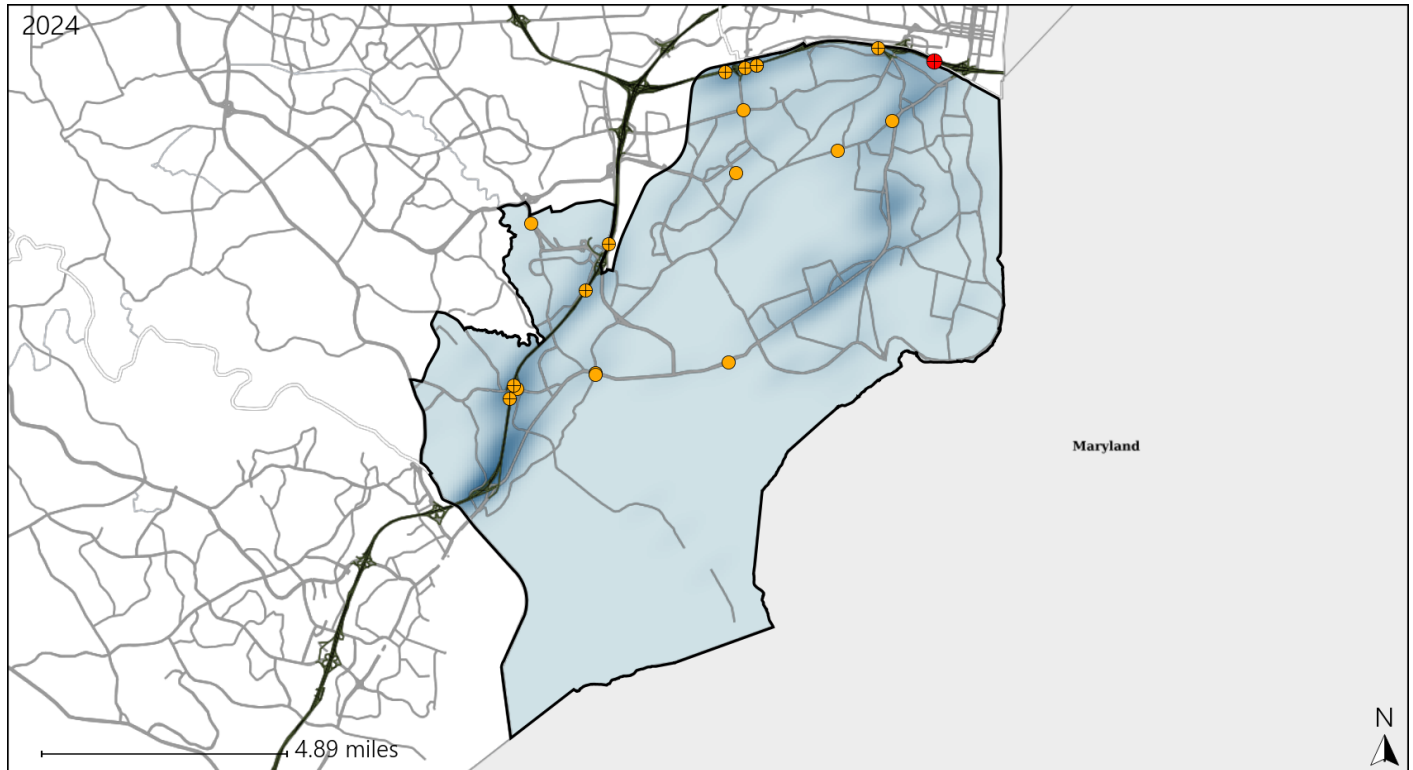


Available Crash Data - Calendar Year (CY)	CY 2021	CY 2022	CY 2023	CY 2024
Total Crashes	1683	2029	2141	2199
Fatal Crashes	12	14	10	15
Injury Crashes	509	585	629	644
Pedestrian-Related Fatal Crashes	5	7	3	7
Percent of Pedestrian-Related Fatal Crashes to Total Fatal Crashes	42%	50%	30%	47%
Pedestrian-Related Injury Crashes	29	31	56	43
Percent of Pedestrian-Related Injury Crashes to Total Injury Crashes	6%	5%	9%	7%

Virginia Senate District 34 Distracted Driving Crash Statistics

Report Generated March, 2025

	Count	Highest Time Period(s)	Highest Day(s)	Highest Month(s)
Fatal Crashes	1	3:00pm - 5:59pm	Tuesday	November
Resulting Fatalities	1	(100%)	(100%)	(100%)
Serious Injury Crashes	18	9:00am - 11:59am	Monday	December • June
		(33%)	(28%)	(34%)



Senate District 34 Distracted Driving-Related Crashes

Interstate Crashes

Non-interstate Crashes

- Fatal
- Serious Injury

- Fatal
- Serious Injury

The blue gradient represents the density of all distracted driving-related crashes.



Available Crash Data - Calendar Year (CY)	CY 2021	CY 2022	CY 2023	CY 2024
Total Crashes	1683	2029	2141	2199
Fatal Crashes	12	14	10	15
Injury Crashes	509	585	629	644
Distracted Driving-Related Fatal Crashes	1	1	1	1
Percent of Distracted Driving-Related Fatal Crashes to Total Fatal Crashes	8%	7%	10%	7%
Distracted Driving-Related Injury Crashes	123	118	141	127
Percent of Distracted Driving-Related Injury Crashes to Total Injury Crashes	24%	20%	22%	20%