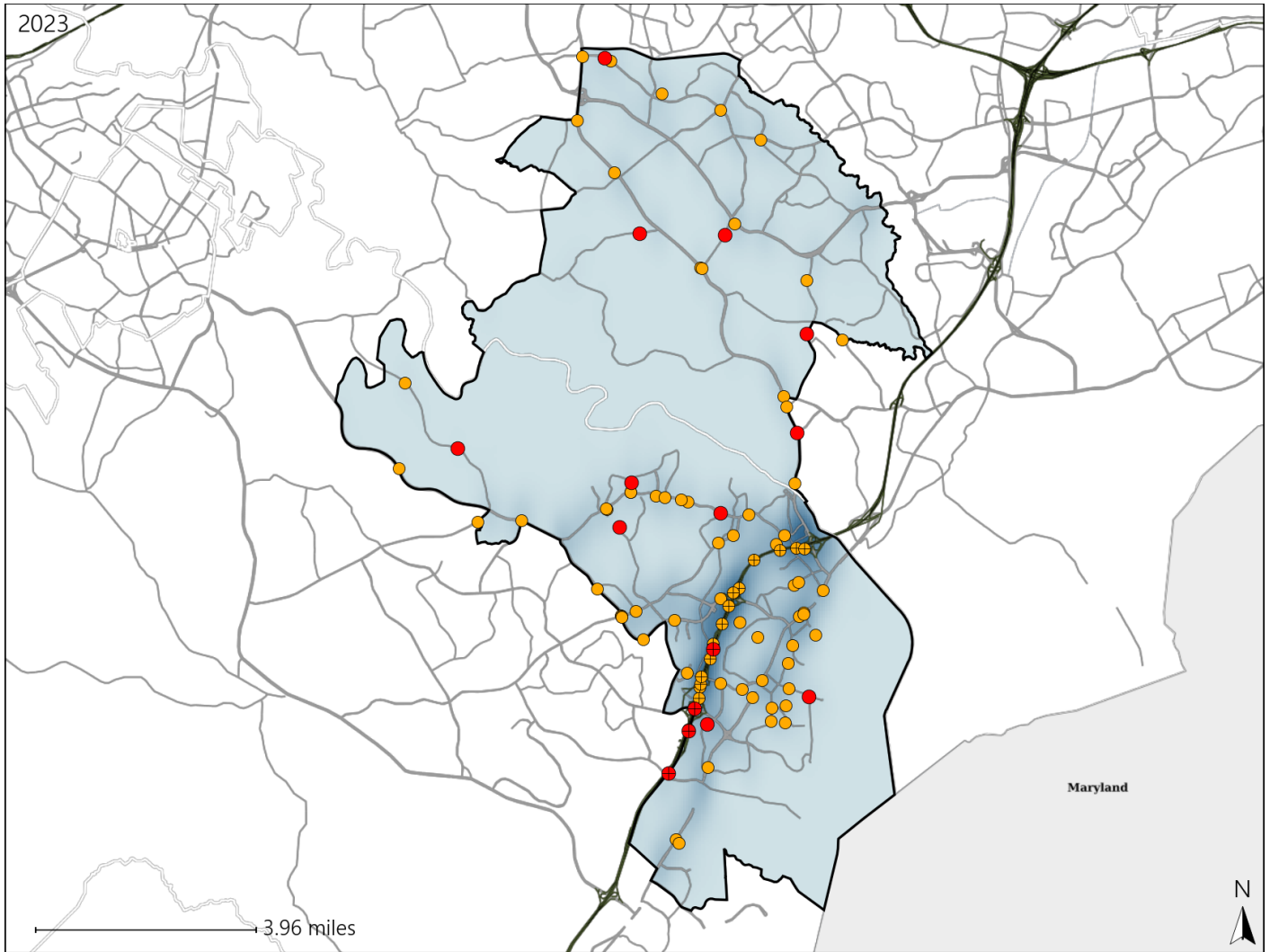


# Virginia Senate District 33 Crash Statistics

Report Generated May, 2024

	Count	Highest Time Period(s)	Highest Day(s)	Highest Month(s)
<b>Fatal Crashes</b>	<b>15</b>	<b>9:00pm - 11:59pm</b>	<b>Saturday</b>	<b>April • September</b>
<b>Resulting Fatalities</b>	<b>16</b>	(20%)	(27%)	(40%)
<b>Serious Injury Crashes</b>	<b>81</b>	<b>3:00pm - 5:59pm</b>	<b>Sunday • Wednesday</b>	<b>July • October</b>
		(22%)	(38%)	(24%)



### Senate District 33 Crashes

Interstate Crashes

- Fatal
- Serious Injury

Non-interstate Crashes

- Fatal
- Serious Injury

The blue gradient represents the density of all crashes.

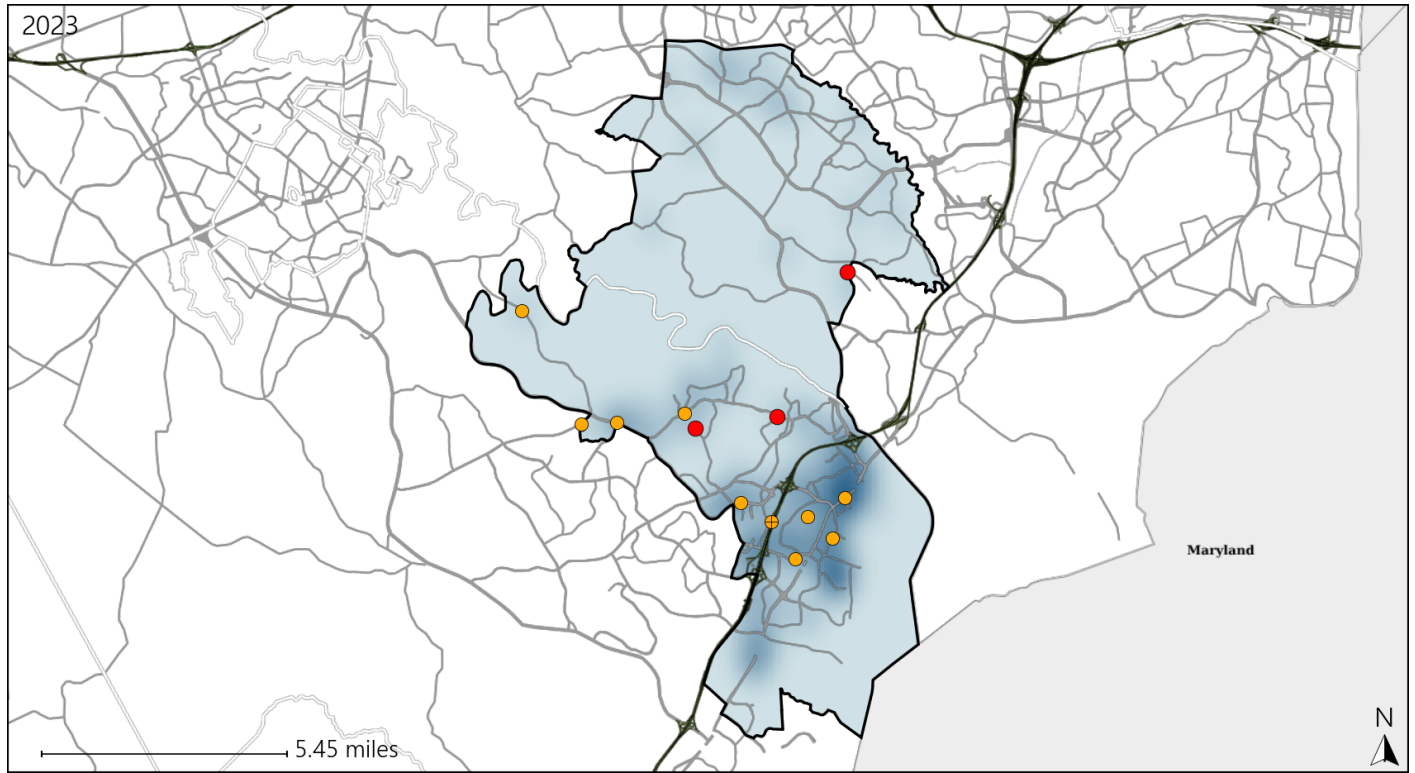


Available Crash Data - Calendar Year (CY)	CY 2020	CY 2021	CY 2022	CY 2023
<b>Total Crashes</b>	<b>1684</b>	<b>2157</b>	<b>2260</b>	<b>2490</b>
<b>Fatal Crashes</b>	<b>4</b>	<b>6</b>	<b>16</b>	<b>15</b>
<b>Injury Crashes</b>	<b>441</b>	<b>679</b>	<b>700</b>	<b>783</b>

# Virginia Senate District 33 Alcohol Crash Statistics

Report Generated May, 2024

	Count	Highest Time Period(s)	Highest Day(s)	Highest Month(s)
<b>Fatal Crashes</b>	<b>3</b>	3:00pm - 5:59pm	Saturday	April • May
<b>Resulting Fatalities</b>	<b>3</b>	9:00pm - 11:59pm (66%)	(67%)	(66%)
<b>Serious Injury Crashes</b>	<b>10</b>	9:00pm - 11:59pm Midnight - 2:59am (60%)	Sunday (50%)	July • May (40%)



### Senate District 33 Alcohol-Related Crashes

Interstate Crashes                      Non-interstate Crashes  
 ● Fatal                                      ● Fatal  
 ⊕ Serious Injury                          ⊕ Serious Injury

The blue gradient represents the density of all alcohol-related crashes.

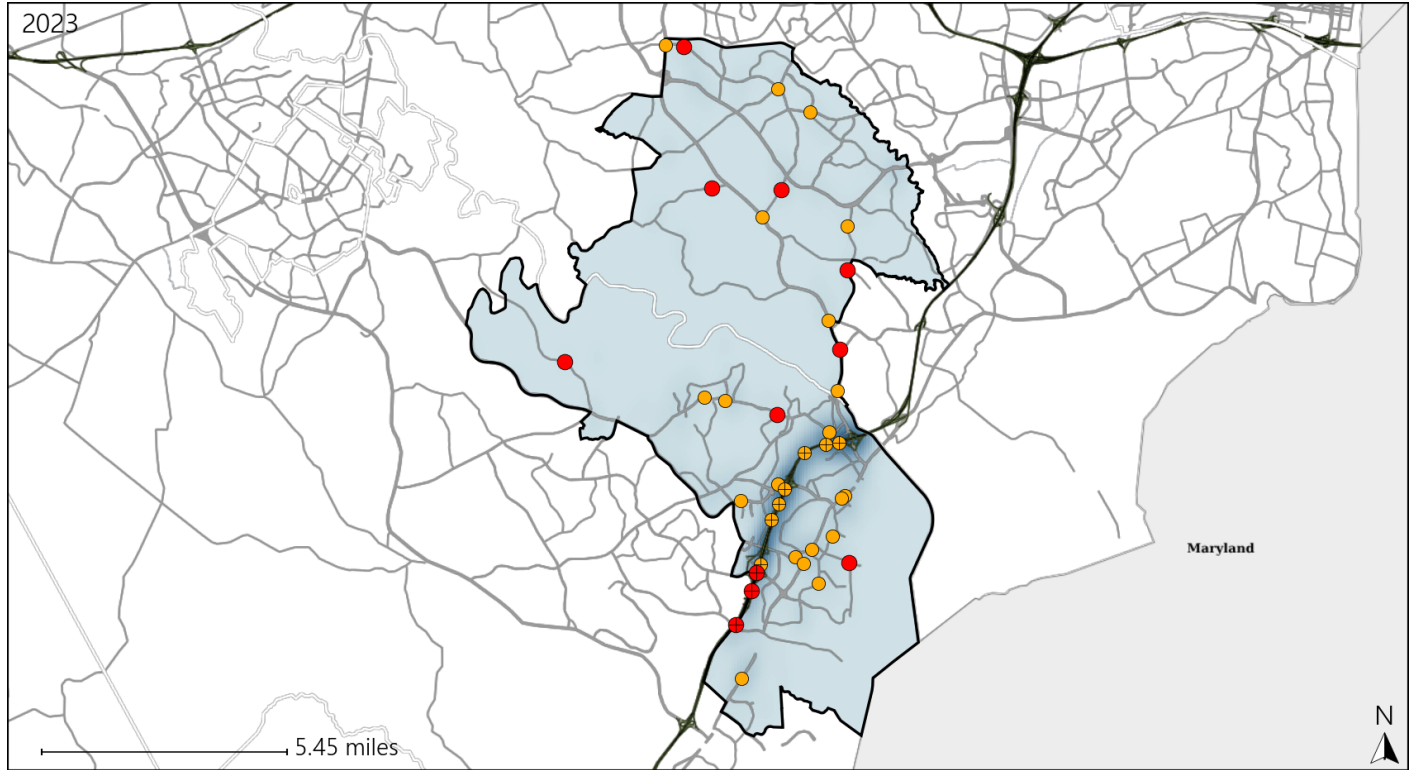


Available Crash Data - Calendar Year (CY)	CY 2020	CY 2021	CY 2022	CY 2023
Total Crashes	1684	2157	2260	2490
Fatal Crashes	4	6	16	15
Injury Crashes	441	679	700	783
Alcohol-Related Fatal Crashes	2	3	5	3
Percent of Alcohol-Related Fatal Crashes to Total Fatal Crashes	50%	50%	31%	20%
Alcohol-Related Injury Crashes	30	63	45	41
Percent of Alcohol-Related Injury Crashes to Total Injury Crashes	7%	9%	6%	5%

# Virginia Senate District 33 Speed Crash Statistics

Report Generated May, 2024

	Count	Highest Time Period(s)	Highest Day(s)	Highest Month(s)
<b>Fatal Crashes</b>	<b>11</b>	<b>9:00pm - 11:59pm</b>	<b>Saturday</b>	<b>April • November</b>
<b>Resulting Fatalities</b>	<b>12</b>	(27%)	(27%)	(36%)
<b>Serious Injury Crashes</b>	<b>28</b>	<b>6:00am - 8:59am</b>	<b>Sunday</b>	<b>November</b>
		(29%)	(32%)	(18%)



## Senate District 33 Speed-Related Crashes

Interstate Crashes                      Non-interstate Crashes  
 ● Fatal                                      ● Fatal  
 ⊕ Serious Injury                          ⊕ Serious Injury

The blue gradient represents the density of all speed-related crashes.

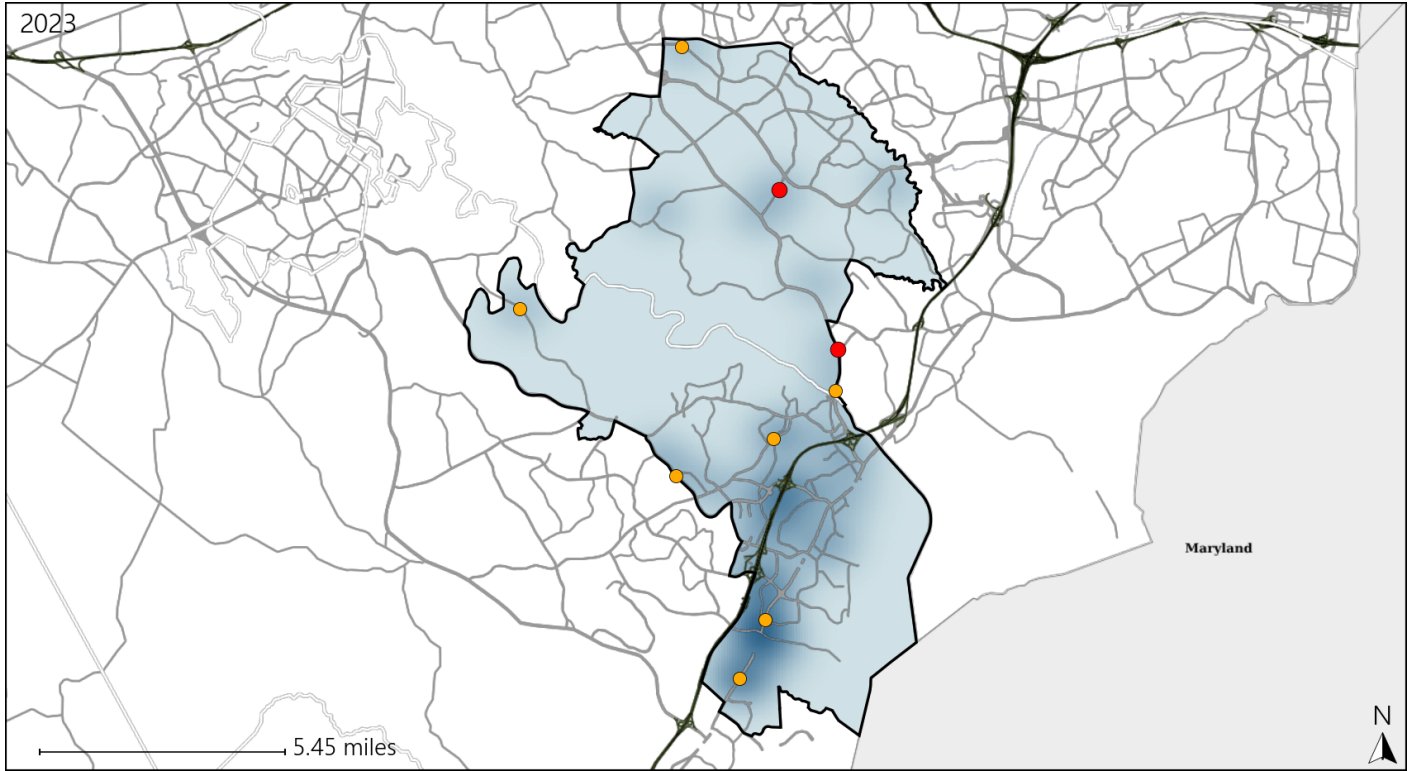


Available Crash Data - Calendar Year (CY)	CY 2020	CY 2021	CY 2022	CY 2023
<b>Total Crashes</b>	<b>1684</b>	<b>2157</b>	<b>2260</b>	<b>2490</b>
<b>Fatal Crashes</b>	<b>4</b>	<b>6</b>	<b>16</b>	<b>15</b>
<b>Injury Crashes</b>	<b>441</b>	<b>679</b>	<b>700</b>	<b>783</b>
<b>Speed-Related Fatal Crashes</b>	<b>2</b>	<b>3</b>	<b>9</b>	<b>11</b>
<b>Percent of Speed-Related Fatal Crashes to Total Fatal Crashes</b>	<b>50%</b>	<b>50%</b>	<b>56%</b>	<b>73%</b>
<b>Speed-Related Injury Crashes</b>	<b>98</b>	<b>153</b>	<b>136</b>	<b>160</b>
<b>Percent of Speed-Related Injury Crashes to Total Injury Crashes</b>	<b>22%</b>	<b>23%</b>	<b>19%</b>	<b>20%</b>

# Virginia Senate District 33 Unrestrained Crash Statistics

Report Generated May, 2024

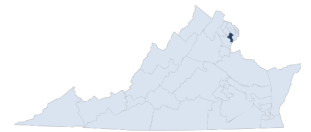
	Count	Highest Time Period(s)	Highest Day(s)	Highest Month(s)
<b>Fatal Crashes</b>	<b>2</b>	9:00am - 11:59am	Saturday • Tuesday	January • September
<b>Unrestrained Fatalities</b>	<b>2</b>	9:00pm - 11:59pm (100%)	(100%)	(100%)
<b>Serious Injury Crashes</b>	<b>7</b>	3:00pm - 5:59pm Midnight - 2:59am (58%)	Friday (57%)	July (29%)



### Senate District 33 Unrestrained-Related Crashes

- |                    |                        |
|--------------------|------------------------|
| Interstate Crashes | Non-interstate Crashes |
| ● Fatal            | ● Fatal                |
| ⊕ Serious Injury   | ⊕ Serious Injury       |

The blue gradient represents the density of all unrestrained-related crashes.

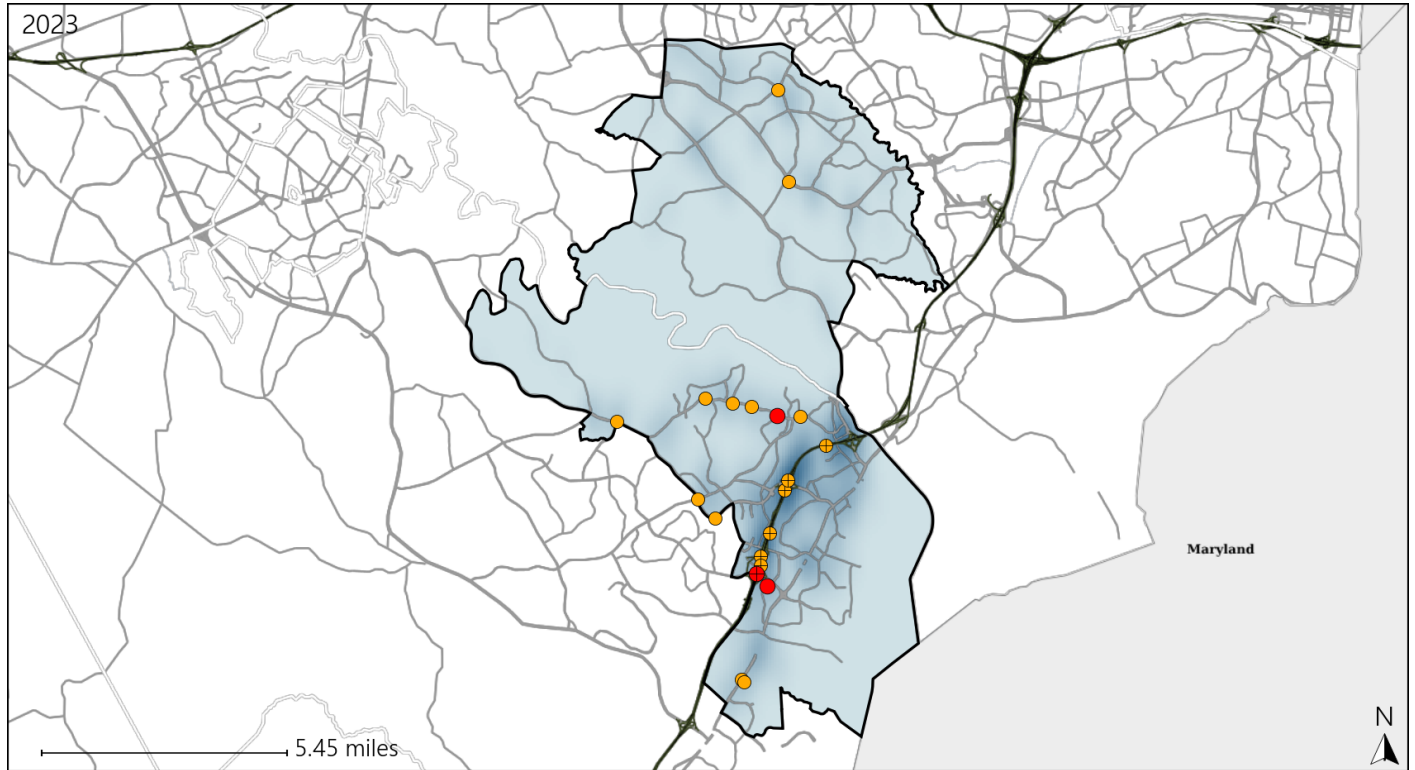


Available Crash Data - Calendar Year (CY)	CY 2020	CY 2021	CY 2022	CY 2023
Total Crashes	1684	2157	2260	2490
Fatalities	4	7	16	16
Injuries	713	1129	1185	1326
Unrestrained Fatalities	3	3	4	2
Percent of Unrestrained Fatalities to Total Fatalities	75%	43%	25%	13%
Unrestrained Injuries	25	47	44	43
Percent of Unrestrained Injuries to Total Injuries	4%	4%	4%	3%

# Virginia Senate District 33 Distracted Driving Crash Statistics

Report Generated May, 2024

	Count	Highest Time Period(s)	Highest Day(s)	Highest Month(s)
<b>Fatal Crashes</b>	<b>3</b>	3:00am - 5:59am	Sunday	April • August
<b>Resulting Fatalities</b>	<b>3</b>	9:00pm - 11:59pm (66%)	(67%)	(66%)
<b>Serious Injury Crashes</b>	<b>17</b>	3:00pm - 5:59pm (41%)	Wednesday (29%)	February (24%)



## Senate District 33 Distracted Driving-Related Crashes

- |                    |                        |
|--------------------|------------------------|
| Interstate Crashes | Non-interstate Crashes |
| ● Fatal            | ● Fatal                |
| ● Serious Injury   | ● Serious Injury       |

The blue gradient represents the density of all distracted driving-related crashes.



Available Crash Data - Calendar Year (CY)	CY 2020	CY 2021	CY 2022	CY 2023
Total Crashes	1684	2157	2260	2490
Fatal Crashes	4	6	16	15
Injury Crashes	441	679	700	783
Distracted Driving-Related Fatal Crashes	2	0	1	3
Percent of Distracted Driving-Related Fatal Crashes to Total Fatal Crashes	50%	0%	6%	20%
Distracted Driving-Related Injury Crashes	79	161	136	175
Percent of Distracted Driving-Related Injury Crashes to Total Injury Crashes	18%	24%	19%	22%