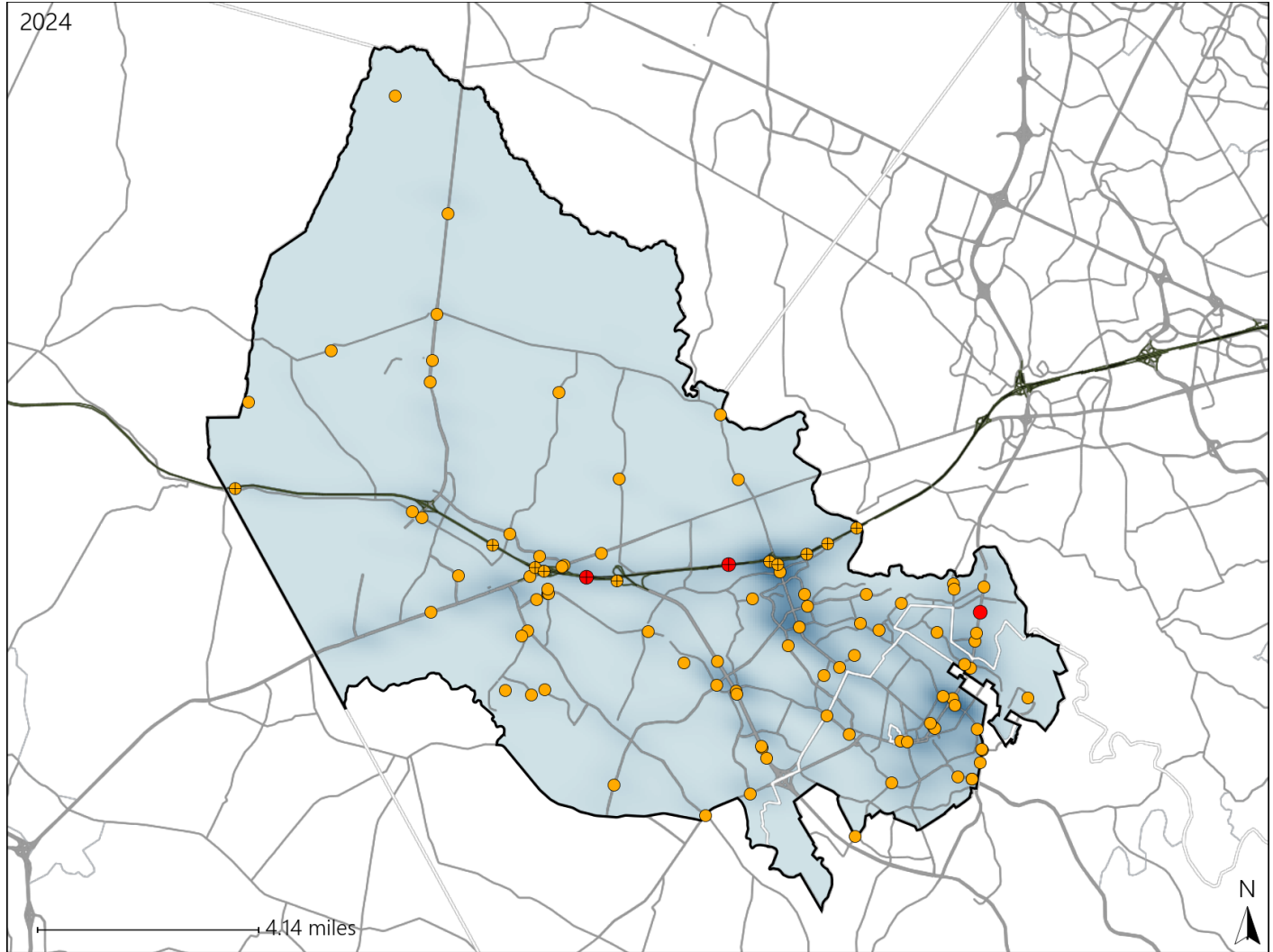


Virginia Senate District 30 Crash Statistics

Report Generated March, 2025

	Count	Highest Time Period(s)	Highest Day(s)	Highest Month(s)
Fatal Crashes	3	Noon - 2:59pm	Friday • Tuesday	June • October
Resulting Fatalities	5	(67%)	(66%)	(66%)
Serious Injury Crashes	93	Noon - 2:59pm	Monday	October
		(22%)	(19%)	(17%)



Senate District 30 Crashes

Interstate Crashes

- Fatal
- Serious Injury

Non-interstate Crashes

- Fatal
- Serious Injury

The blue gradient represents the density of all crashes.

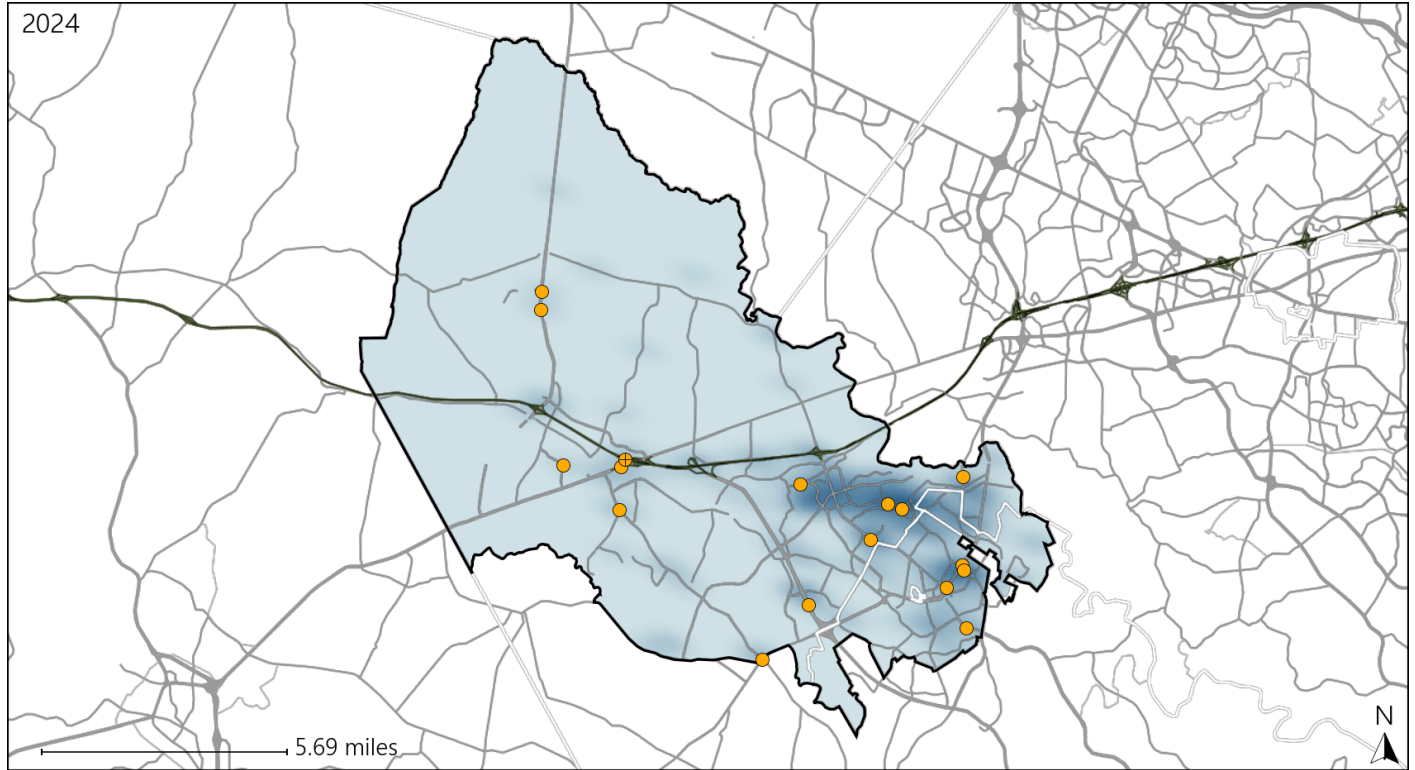


Available Crash Data - Calendar Year (CY)	CY 2021	CY 2022	CY 2023	CY 2024
Total Crashes	2283	2523	2625	2766
Fatal Crashes	12	11	13	3
Injury Crashes	804	861	985	1133

Virginia Senate District 30 Alcohol Crash Statistics

Report Generated March, 2025

	Count	Highest Time Period(s)	Highest Day(s)	Highest Month(s)
Fatal Crashes	0	-	-	-
Resulting Fatalities	0	-	-	-
Serious Injury Crashes	17	9:00pm - 11:59pm (24%)	Sunday (29%)	August - October (36%)



Senate District 30 Alcohol-Related Crashes

Interstate Crashes

Non-interstate Crashes

- Fatal
- Serious Injury

- Fatal
- Serious Injury

The blue gradient represents the density of all alcohol-related crashes.



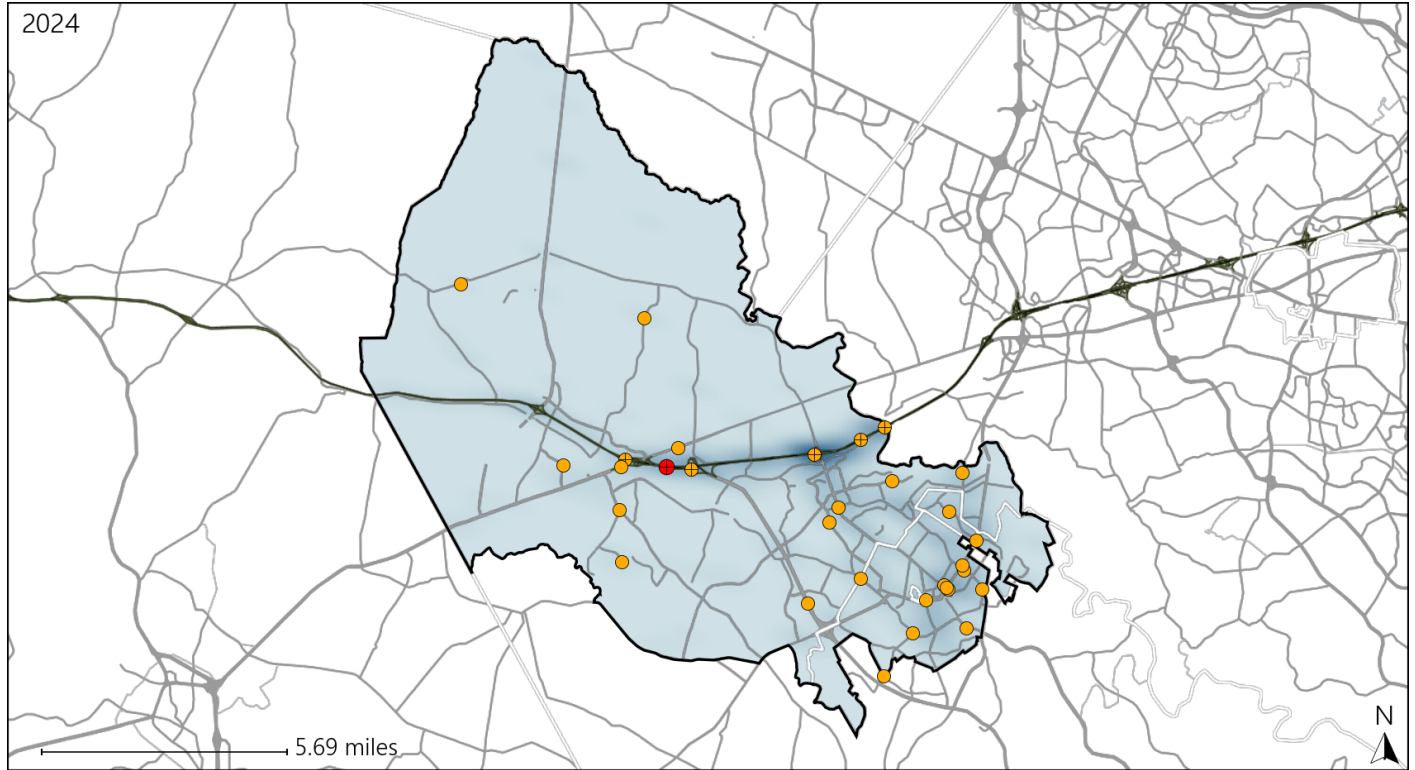
Available Crash Data - Calendar Year (CY)	CY 2021	CY 2022	CY 2023	CY 2024
Total Crashes	2283	2523	2625	2766
Fatal Crashes	12	11	13	3
Injury Crashes	804	861	985	1133
Alcohol-Related Fatal Crashes	2	5	6	0
Percent of Alcohol-Related Fatal Crashes to Total Fatal Crashes	17%	45%	46%	0%
Alcohol-Related Injury Crashes	58	59	62	87
Percent of Alcohol-Related Injury Crashes to Total Injury Crashes	7%	7%	6%	8%

Report of Crashes for January 1st - December 31st, 2024

Virginia Senate District 30 Speed Crash Statistics

Report Generated March, 2025

	Count	Highest Time Period(s)	Highest Day(s)	Highest Month(s)
Fatal Crashes	1	Noon - 2:59pm	Tuesday	October
Resulting Fatalities	2	(100%)	(100%)	(100%)
Serious Injury Crashes	30	6:00pm - 8:59pm	Friday	October
		(23%)	(27%)	(20%)



Senate District 30 Speed-Related Crashes

Interstate Crashes

Non-interstate Crashes

- Fatal
- Serious Injury

- Fatal
- Serious Injury

The blue gradient represents the density of all speed-related crashes.

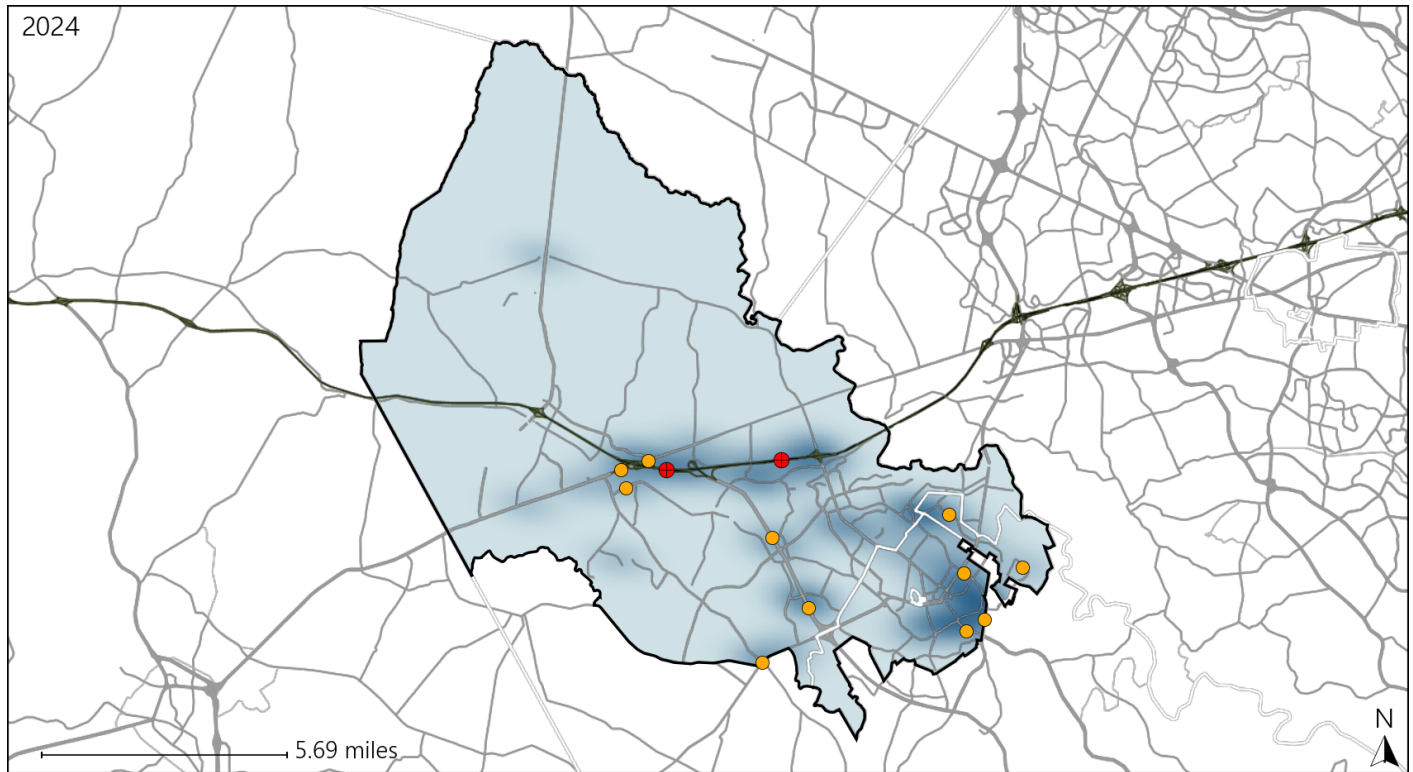


Available Crash Data - Calendar Year (CY)	CY 2021	CY 2022	CY 2023	CY 2024
Total Crashes	2283	2523	2625	2766
Fatal Crashes	12	11	13	3
Injury Crashes	804	861	985	1133
Speed-Related Fatal Crashes	5	4	7	1
Percent of Speed-Related Fatal Crashes to Total Fatal Crashes	42%	36%	54%	33%
Speed-Related Injury Crashes	158	158	164	207
Percent of Speed-Related Injury Crashes to Total Injury Crashes	20%	18%	17%	18%

Virginia Senate District 30 Unrestrained Crash Statistics

Report Generated March, 2025

	Count	Highest Time Period(s)	Highest Day(s)	Highest Month(s)
Fatal Crashes	2	Noon - 2:59pm	Friday • Tuesday	June • October
Unrestrained Fatalities	3	(100%)	(100%)	(100%)
Serious Injury Crashes	11	9:00pm - 11:59pm Noon - 2:59pm	Friday • Tuesday	April • October
		(54%)	(54%)	(36%)



Senate District 30 Unrestrained-Related Crashes

Interstate Crashes

Non-interstate Crashes

● Fatal

● Fatal

⊕ Serious Injury

⊕ Serious Injury

The blue gradient represents the density of all unrestrained-related crashes.

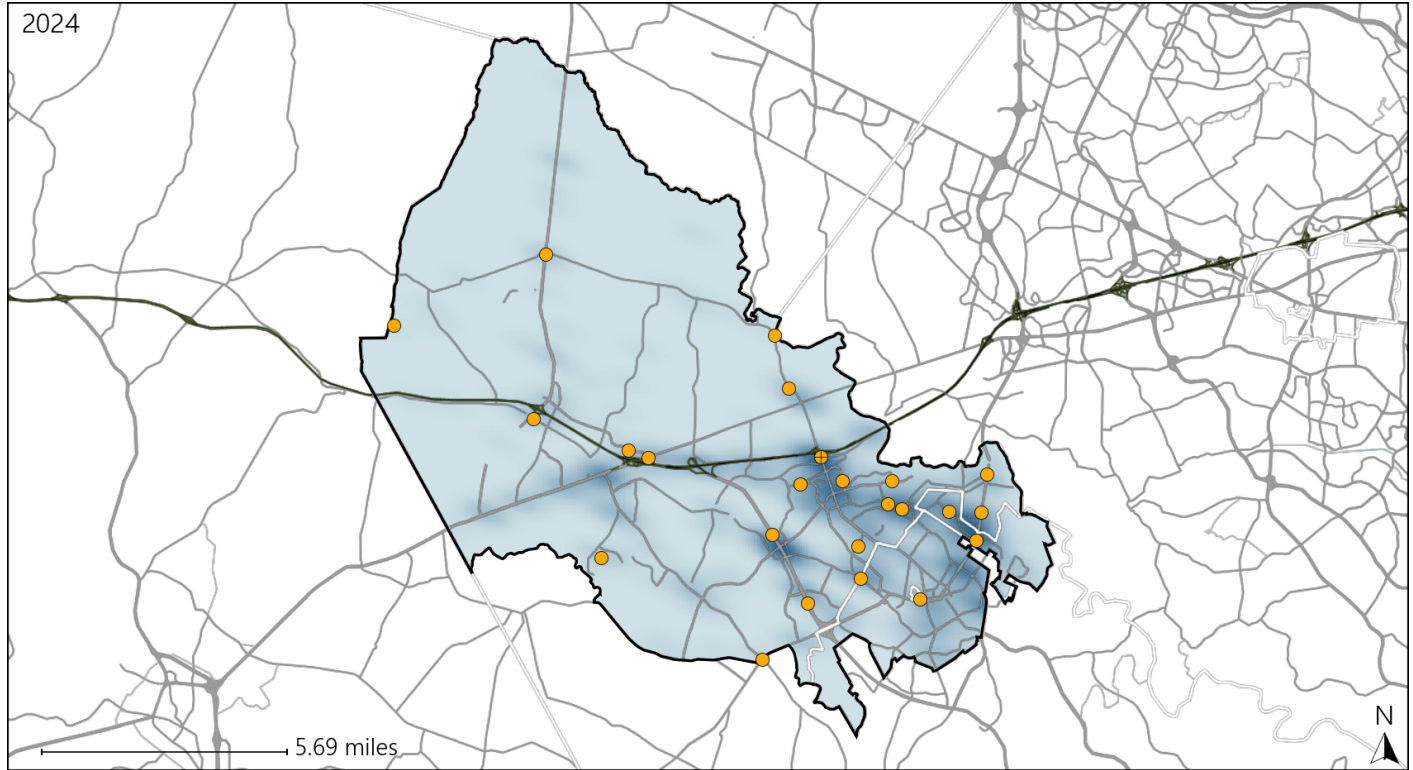


Available Crash Data - Calendar Year (CY)	CY 2021	CY 2022	CY 2023	CY 2024
Total Crashes	2283	2523	2625	2766
Fatalities	12	11	13	5
Injuries	1398	1540	1733	2109
Unrestrained Fatalities	2	3	1	3
Percent of Unrestrained Fatalities to Total Fatalities	17%	27%	8%	60%
Unrestrained Injuries	56	44	35	63
Percent of Unrestrained Injuries to Total Injuries	4%	3%	2%	3%

Virginia Senate District 30 Distracted Driving Crash Statistics

Report Generated March, 2025

	Count	Highest Time Period(s)	Highest Day(s)	Highest Month(s)
Fatal Crashes	0	-	-	-
Resulting Fatalities	0	-	-	-
Serious Injury Crashes	24	Noon - 2:59pm (33%)	Monday * Saturday (42%)	October (21%)



Senate District 30 Distracted Driving-Related Crashes

Interstate Crashes

- Fatal
- Serious Injury

Non-interstate Crashes

- Fatal
- Serious Injury

The blue gradient represents the density of all distracted driving-related crashes.



Available Crash Data - Calendar Year (CY)	CY 2021	CY 2022	CY 2023	CY 2024
Total Crashes	2283	2523	2625	2766
Fatal Crashes	12	11	13	3
Injury Crashes	804	861	985	1133
Distracted Driving-Related Fatal Crashes	0	0	0	0
Percent of Distracted Driving-Related Fatal Crashes to Total Fatal Crashes	0%	0%	0%	0%
Distracted Driving-Related Injury Crashes	164	201	207	226
Percent of Distracted Driving-Related Injury Crashes to Total Injury Crashes	20%	23%	21%	20%