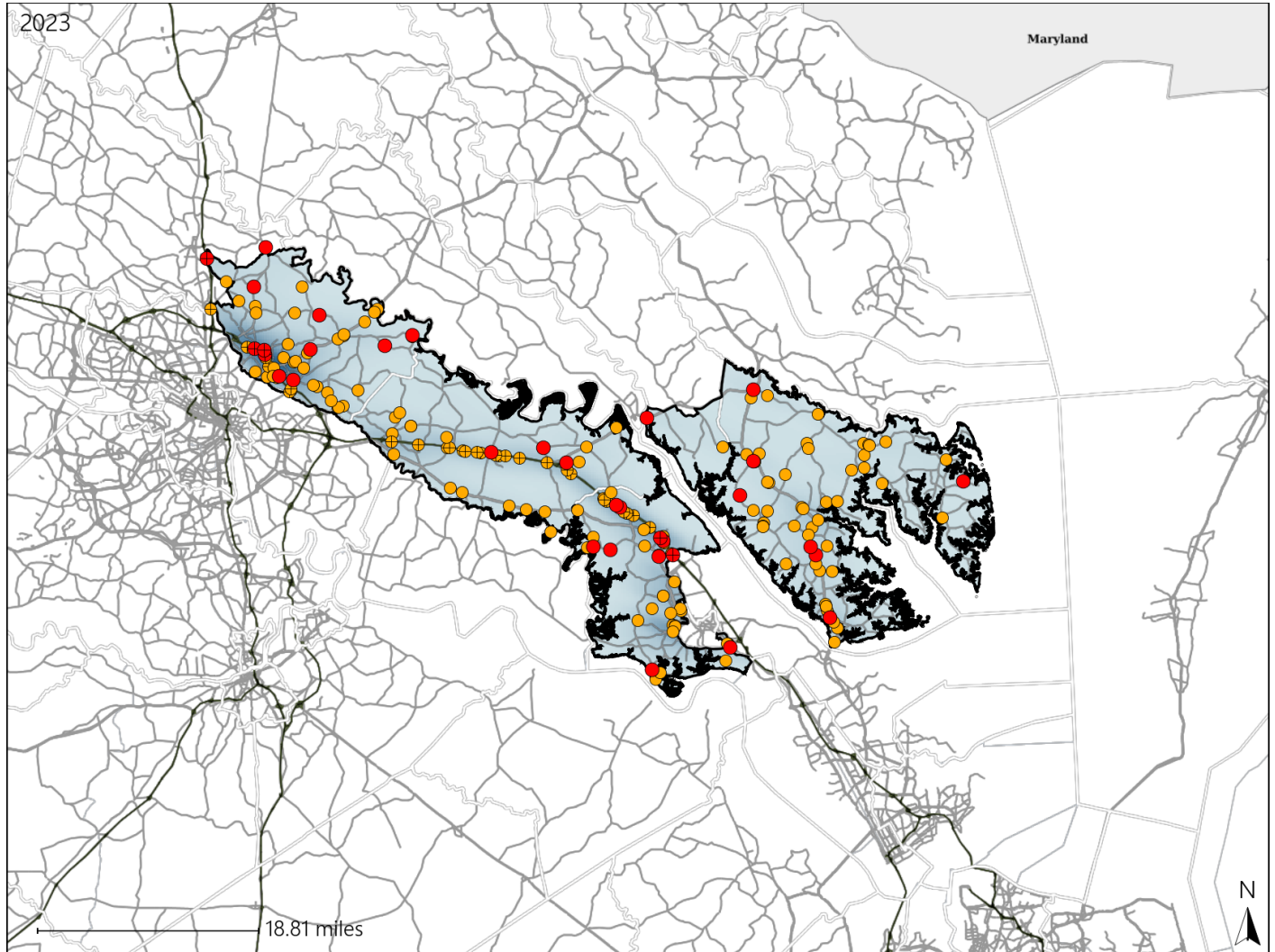


# Virginia Senate District 26 Crash Statistics

Report Generated May, 2024

|                               | Count      | Highest Time Period(s)     | Highest Day(s)    | Highest Month(s) |
|-------------------------------|------------|----------------------------|-------------------|------------------|
| <b>Fatal Crashes</b>          | <b>33</b>  | 9:00pm - 11:59pm           | Saturday • Sunday | August           |
| <b>Resulting Fatalities</b>   | <b>34</b>  | Midnight - 2:59am<br>(36%) | (48%)             | (18%)            |
| <b>Serious Injury Crashes</b> | <b>159</b> | 3:00pm - 5:59pm<br>(26%)   | Friday<br>(18%)   | July<br>(16%)    |



### Senate District 26 Crashes

Interstate Crashes

- Fatal
- Serious Injury

Non-interstate Crashes

- Fatal
- Serious Injury

The blue gradient represents the density of all crashes.

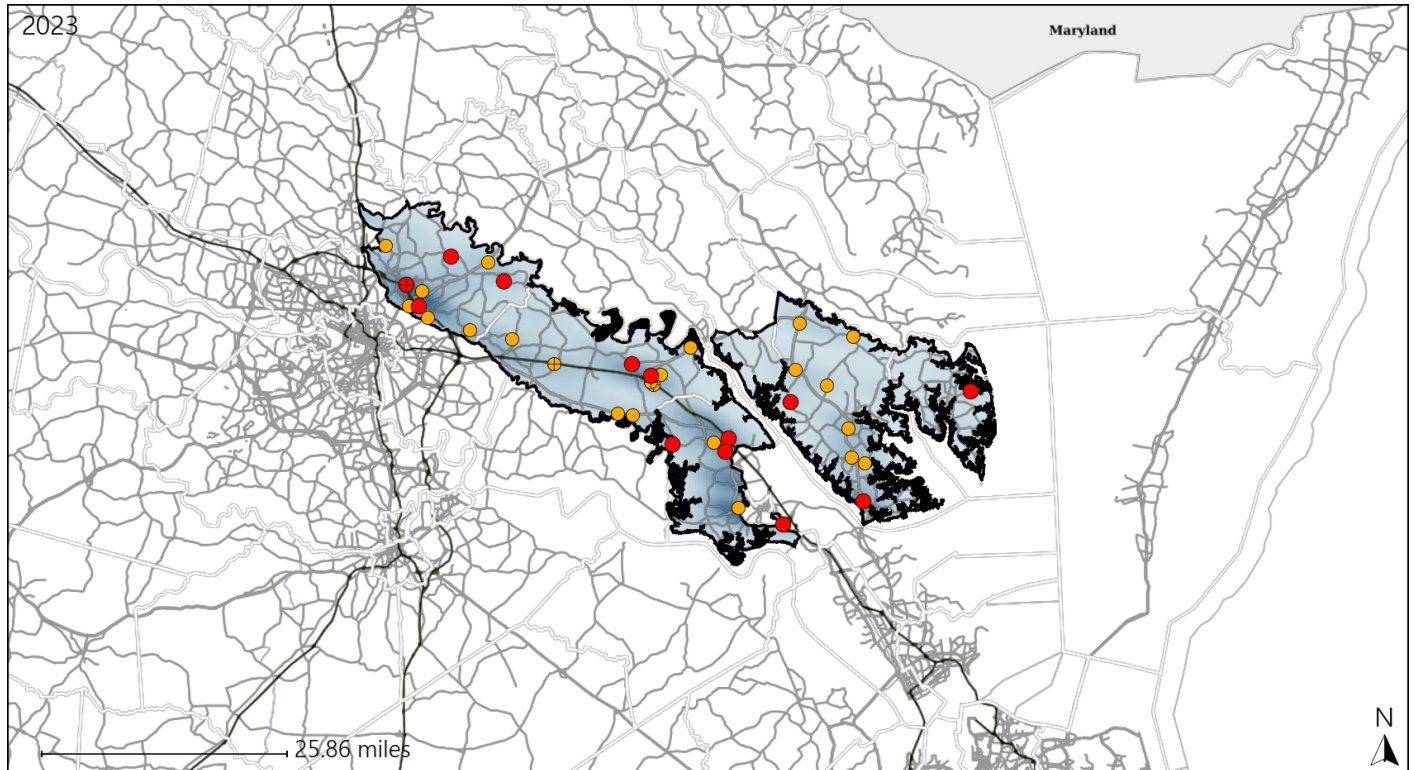


| Available Crash Data - Calendar Year (CY) | CY 2020 | CY 2021 | CY 2022 | CY 2023 |
|---|---------|---------|---------|---------|
| Total Crashes                             | 2413    | 2554    | 2539    | 2714    |
| Fatal Crashes                             | 28      | 36      | 27      | 33      |
| Injury Crashes                            | 862     | 887     | 854     | 938     |

# Virginia Senate District 26 Alcohol Crash Statistics

Report Generated May, 2024

|                               | Count     | Highest Time Period(s)  | Highest Day(s)          | Highest Month(s) |
|-------------------------------|-----------|-------------------------|-------------------------|------------------|
| <b>Fatal Crashes</b>          | <b>13</b> | <b>9:00pm - 11:59pm</b> | <b>Saturday</b>         | <b>March</b>     |
| <b>Resulting Fatalities</b>   | <b>14</b> | (38%)                   | (38%)                   | (31%)            |
| <b>Serious Injury Crashes</b> | <b>25</b> | <b>6:00pm - 8:59pm</b>  | <b>Sunday • Tuesday</b> | <b>April</b>     |
|                               |           | (28%)                   | (48%)                   | (24%)            |



### Senate District 26 Alcohol-Related Crashes

Interstate Crashes                      Non-interstate Crashes  
 ● Fatal                                      ● Fatal  
 ⊕ Serious Injury                          ⊕ Serious Injury

The blue gradient represents the density of all alcohol-related crashes.

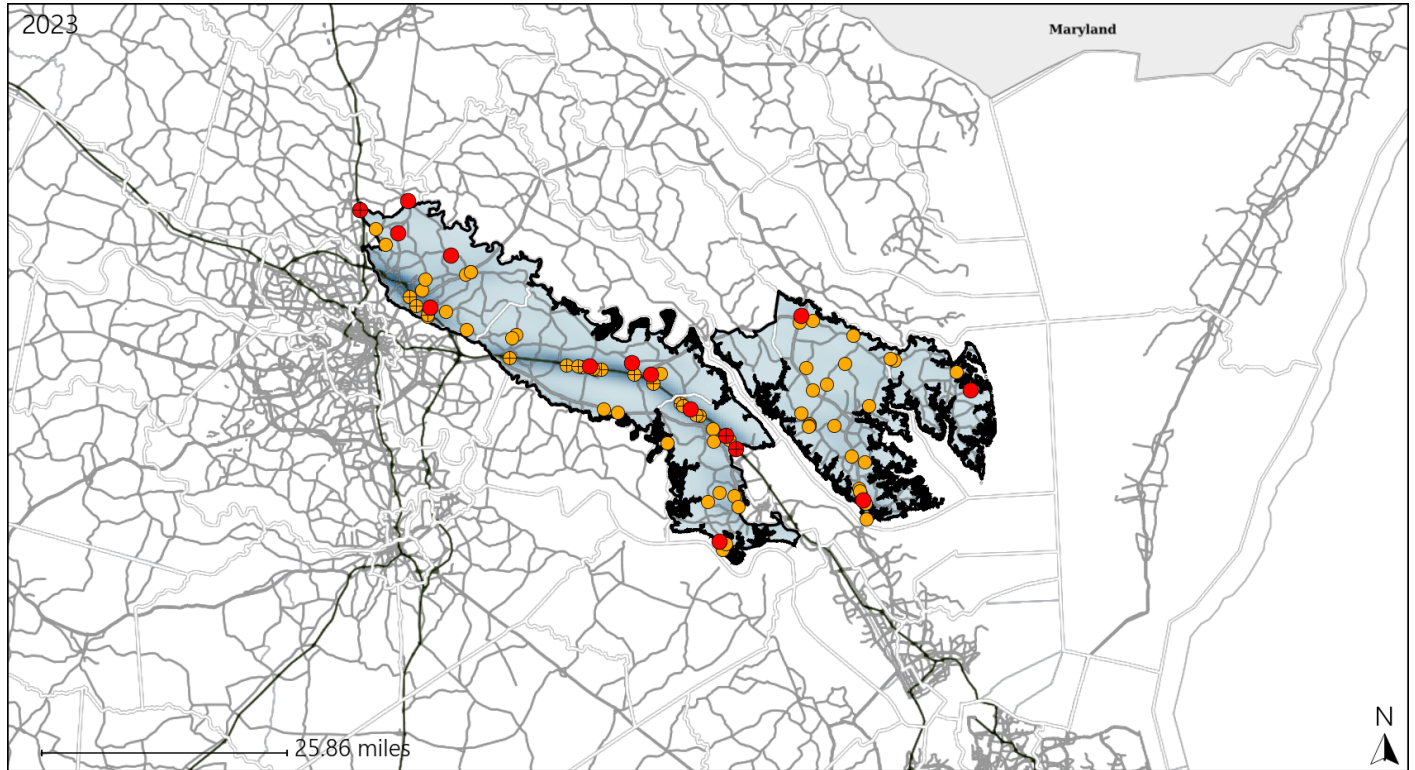


| Available Crash Data - Calendar Year (CY)                         | CY 2020 | CY 2021 | CY 2022 | CY 2023 |
|---|---------|---------|---------|---------|
| Total Crashes   | 2413    | 2554    | 2539    | 2714    |
| Fatal Crashes   | 28      | 36      | 27      | 33      |
| Injury Crashes  | 862     | 887     | 854     | 938     |
| Alcohol-Related Fatal Crashes                                     | 6       | 6       | 7       | 13      |
| Percent of Alcohol-Related Fatal Crashes to Total Fatal Crashes   | 21%     | 17%     | 26%     | 39%     |
| Alcohol-Related Injury Crashes                                    | 74      | 76      | 65      | 88      |
| Percent of Alcohol-Related Injury Crashes to Total Injury Crashes | 9%      | 9%      | 8%      | 9%      |

# Virginia Senate District 26 Speed Crash Statistics

Report Generated May, 2024

|                               | Count     | Highest Time Period(s)    | Highest Day(s)  | Highest Month(s) |
|-------------------------------|-----------|---------------------------|-----------------|------------------|
| <b>Fatal Crashes</b>          | <b>15</b> | 6:00pm - 8:59pm           | Friday • Sunday | December • March |
| <b>Resulting Fatalities</b>   | <b>16</b> | 9:00pm - 11:59pm<br>(40%) | (54%)           | (40%)            |
| <b>Serious Injury Crashes</b> | <b>67</b> | 3:00pm - 5:59pm<br>(24%)  | Sunday<br>(21%) | July<br>(16%)    |



## Senate District 26 Speed-Related Crashes

Interstate Crashes

Non-interstate Crashes

● Fatal

● Fatal

● Serious Injury

● Serious Injury

The blue gradient represents the density of all speed-related crashes.

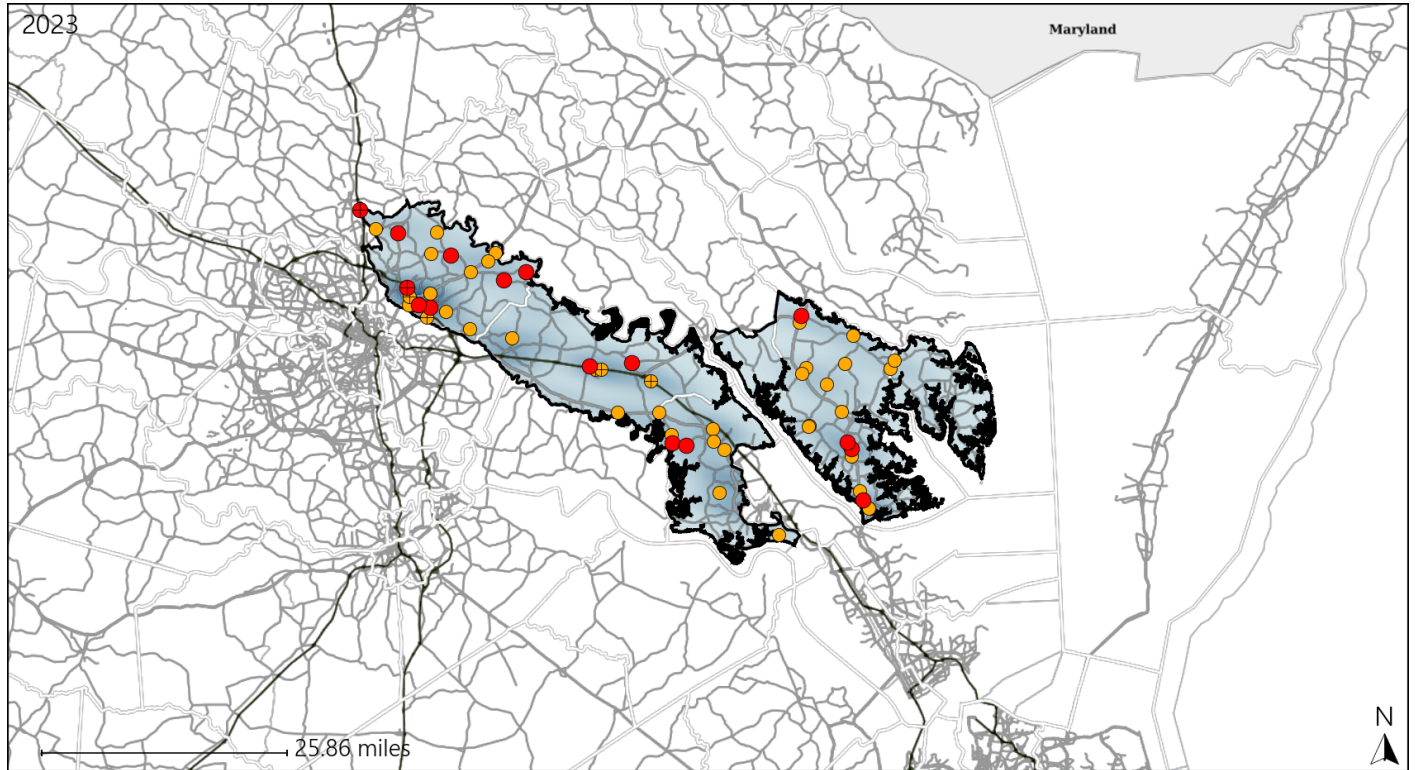


| Available Crash Data - Calendar Year (CY)                       | CY 2020 | CY 2021 | CY 2022 | CY 2023 |
|---|---------|---------|---------|---------|
| Total Crashes   | 2413    | 2554    | 2539    | 2714    |
| Fatal Crashes   | 28      | 36      | 27      | 33      |
| Injury Crashes  | 862     | 887     | 854     | 938     |
| Speed-Related Fatal Crashes                                     | 8       | 15      | 17      | 15      |
| Percent of Speed-Related Fatal Crashes to Total Fatal Crashes   | 29%     | 42%     | 63%     | 45%     |
| Speed-Related Injury Crashes                                    | 197     | 213     | 192     | 251     |
| Percent of Speed-Related Injury Crashes to Total Injury Crashes | 23%     | 24%     | 22%     | 27%     |

# Virginia Senate District 26 Unrestrained Crash Statistics

Report Generated May, 2024

|                                | Count     | Highest Time Period(s)            | Highest Day(s)  | Highest Month(s)        |
|--------------------------------|-----------|-----------------------------------|-----------------|-------------------------|
| <b>Fatal Crashes</b>           | <b>16</b> | <b>9:00pm - 11:59pm</b>           | <b>Saturday</b> | <b>August + January</b> |
| <b>Unrestrained Fatalities</b> | <b>16</b> | <b>Midnight - 2:59am</b><br>(38%) | <b>(25%)</b>    | <b>(38%)</b>            |
| <b>Serious Injury Crashes</b>  | <b>39</b> | <b>Noon - 2:59pm</b>              | <b>Sunday</b>   | <b>January</b>          |
|                                |           | <b>(21%)</b>                      | <b>(26%)</b>    | <b>(21%)</b>            |



### Senate District 26 Unrestrained-Related Crashes

Interstate Crashes

Non-interstate Crashes

- Fatal
- Serious Injury

- Fatal
- Serious Injury

The blue gradient represents the density of all unrestrained-related crashes.

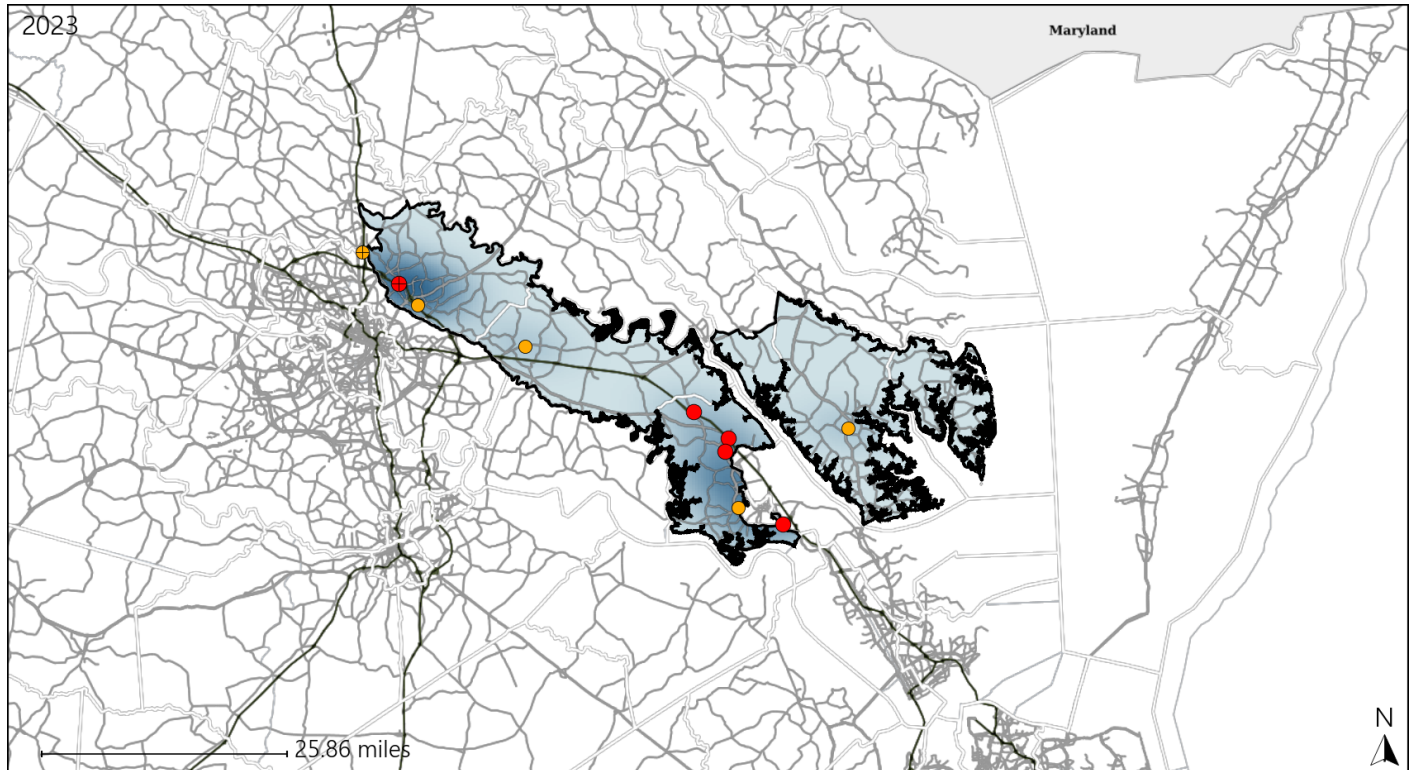


| Available Crash Data - Calendar Year (CY)              | CY 2020 | CY 2021 | CY 2022 | CY 2023 |
|--|---------|---------|---------|---------|
| Total Crashes  | 2413    | 2554    | 2539    | 2714    |
| Fatalities   | 30      | 41      | 29      | 34      |
| Injuries   | 1275    | 1362    | 1285    | 1502    |
| Unrestrained Fatalities                                | 10      | 13      | 14      | 16      |
| Percent of Unrestrained Fatalities to Total Fatalities | 33%     | 32%     | 48%     | 47%     |
| Unrestrained Injuries                                  | 89      | 107     | 97      | 133     |
| Percent of Unrestrained Injuries to Total Injuries     | 7%      | 8%      | 8%      | 9%      |

# Virginia Senate District 26 Pedestrian Crash Statistics

Report Generated May, 2024

|                               | Count    | Highest Time Period(s)   | Highest Day(s)         | Highest Month(s)      |
|-------------------------------|----------|--------------------------|------------------------|-----------------------|
| <b>Fatal Crashes</b>          | <b>5</b> | <b>Midnight - 2:59am</b> | <b>Friday • Monday</b> | <b>April • August</b> |
| <b>Pedestrian Fatalities</b>  | <b>5</b> | <b>(40%)</b>             | <b>(40%)</b>           | <b>(40%)</b>          |
| <b>Serious Injury Crashes</b> | <b>5</b> | <b>6:00pm - 8:59pm</b>   | <b>Tuesday</b>         | <b>July • October</b> |
|                               |          | <b>(40%)</b>             | <b>(40%)</b>           | <b>(80%)</b>          |



### Senate District 26 Pedestrian-Related Crashes

- |  |  |
|--|--|
| Interstate Crashes                                   | Non-interstate Crashes                               |
| <span style="color: red;">●</span> Fatal             | <span style="color: red;">●</span> Fatal             |
| <span style="color: orange;">●</span> Serious Injury | <span style="color: orange;">●</span> Serious Injury |

The blue gradient represents the density of all pedestrian-related crashes.

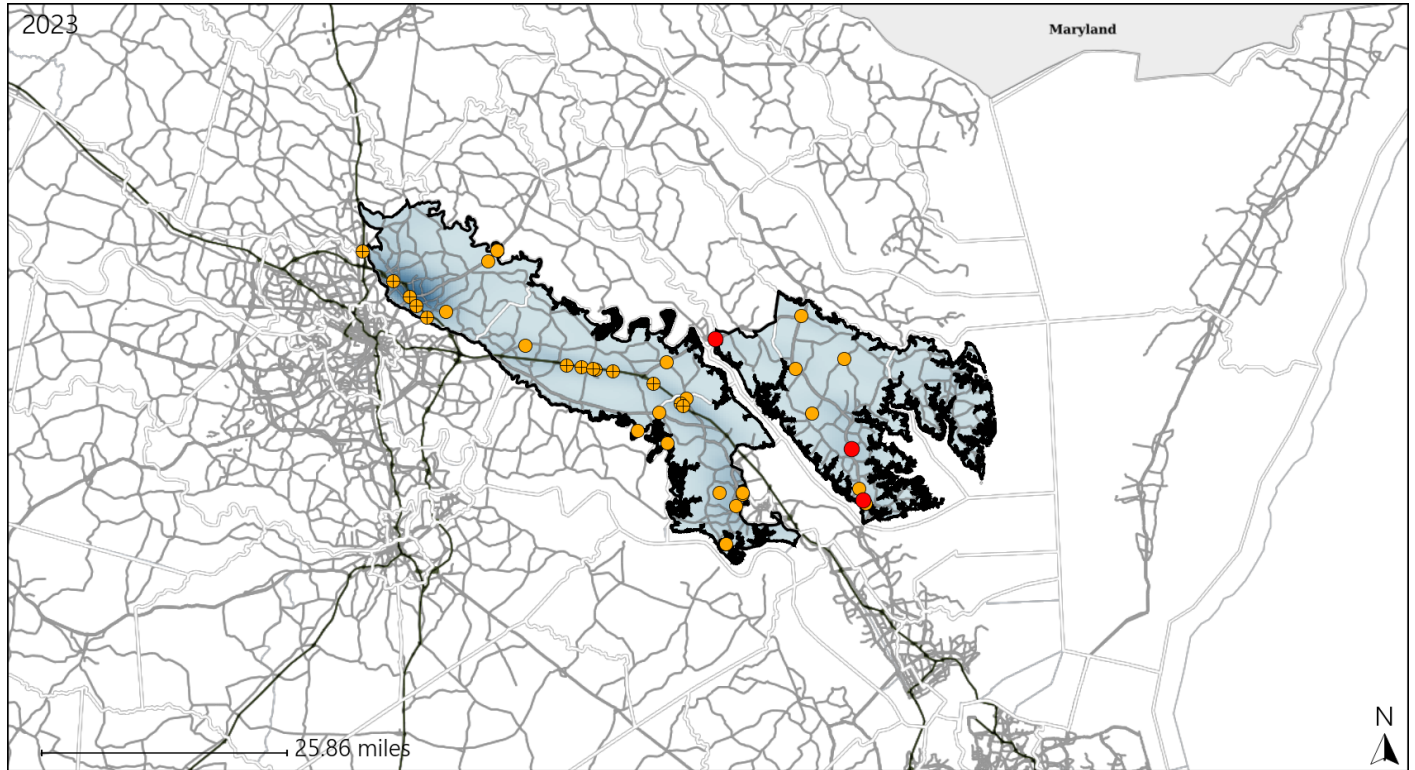


| Available Crash Data - Calendar Year (CY)                            | CY 2020 | CY 2021 | CY 2022 | CY 2023 |
|--|---------|---------|---------|---------|
| Total Crashes  | 2413    | 2554    | 2539    | 2714    |
| Fatal Crashes  | 28      | 36      | 27      | 33      |
| Injury Crashes   | 862     | 887     | 854     | 938     |
| Pedestrian-Related Fatal Crashes                                     | 3       | 4       | 2       | 5       |
| Percent of Pedestrian-Related Fatal Crashes to Total Fatal Crashes   | 11%     | 11%     | 7%      | 15%     |
| Pedestrian-Related Injury Crashes                                    | 10      | 14      | 15      | 14      |
| Percent of Pedestrian-Related Injury Crashes to Total Injury Crashes | 1%      | 2%      | 2%      | 1%      |

# Virginia Senate District 26 Distracted Driving Crash Statistics

Report Generated May, 2024

|                               | Count     | Highest Time Period(s)    | Highest Day(s)  | Highest Month(s) |
|-------------------------------|-----------|---------------------------|-----------------|------------------|
| <b>Fatal Crashes</b>          | <b>3</b>  | 3:00am - 5:59am           | <b>Friday</b>   | <b>August</b>    |
| <b>Resulting Fatalities</b>   | <b>3</b>  | 9:00pm - 11:59pm<br>(66%) | (67%)           | (67%)            |
| <b>Serious Injury Crashes</b> | <b>33</b> | 3:00pm - 5:59pm<br>(27%)  | <b>Saturday</b> | <b>July</b>      |
|                               |           |                           | (24%)           | (21%)            |



## Senate District 26 Distracted Driving-Related Crashes

- |  |  |
|--|--|
| Interstate Crashes                                   | Non-interstate Crashes                               |
| <span style="color: red;">●</span> Fatal             | <span style="color: red;">●</span> Fatal             |
| <span style="color: orange;">●</span> Serious Injury | <span style="color: orange;">●</span> Serious Injury |

The blue gradient represents the density of all distracted driving-related crashes.



| Available Crash Data - Calendar Year (CY)                                    | CY 2020 | CY 2021 | CY 2022 | CY 2023 |
|--|---------|---------|---------|---------|
| Total Crashes  | 2413    | 2554    | 2539    | 2714    |
| Fatal Crashes  | 28      | 36      | 27      | 33      |
| Injury Crashes   | 862     | 887     | 854     | 938     |
| Distracted Driving-Related Fatal Crashes                                     | 3       | 1       | 2       | 3       |
| Percent of Distracted Driving-Related Fatal Crashes to Total Fatal Crashes   | 11%     | 3%      | 7%      | 9%      |
| Distracted Driving-Related Injury Crashes                                    | 192     | 195     | 147     | 156     |
| Percent of Distracted Driving-Related Injury Crashes to Total Injury Crashes | 22%     | 22%     | 17%     | 17%     |