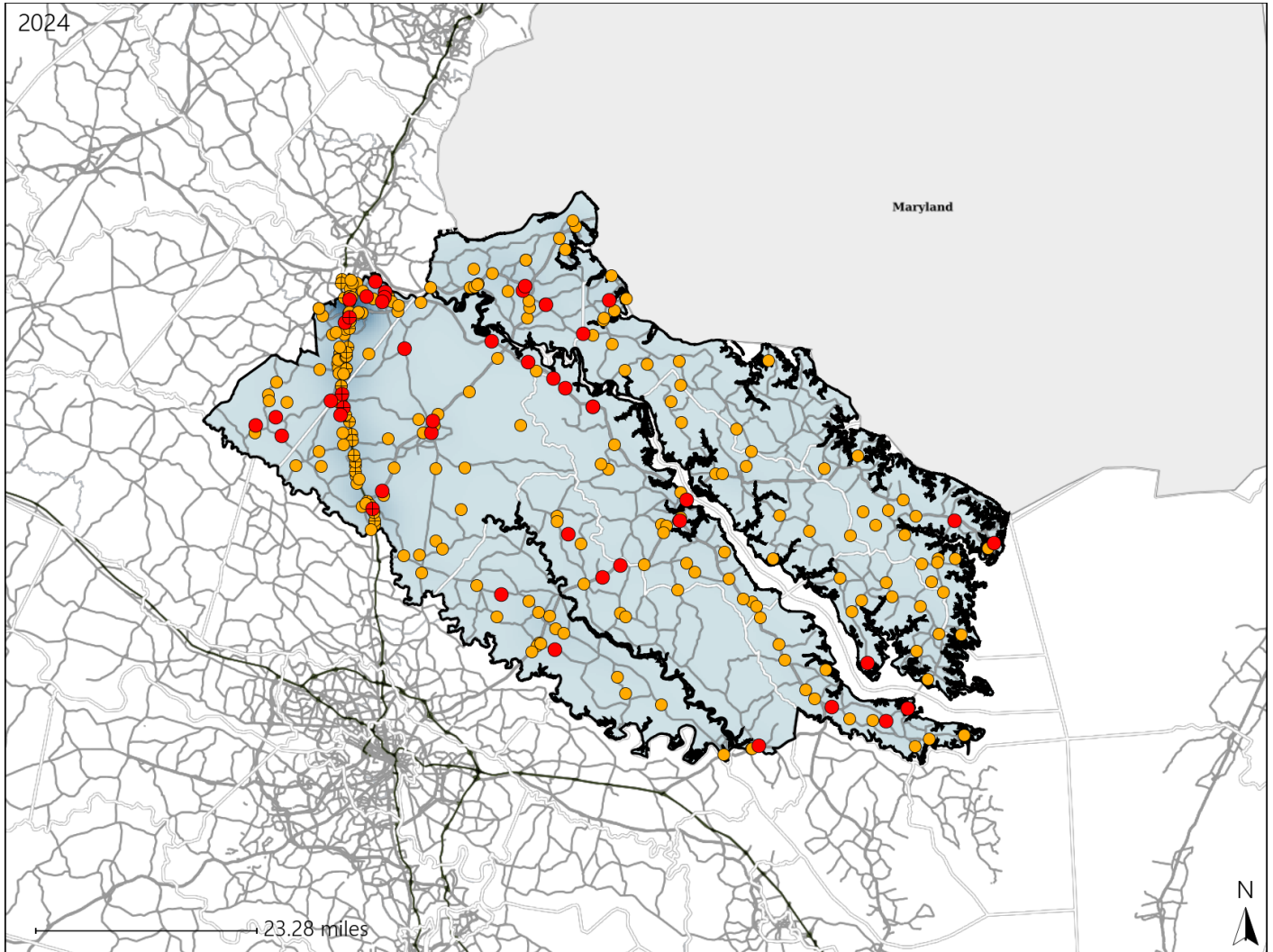


Virginia Senate District 25 Crash Statistics

Report Generated March, 2025

	Count	Highest Time Period(s)	Highest Day(s)	Highest Month(s)
Fatal Crashes	46	3:00pm - 5:59pm	Monday	August + June
Resulting Fatalities	49	6:00pm - 8:59pm (40%)	(20%)	(30%)
Serious Injury Crashes	237	6:00pm - 8:59pm (19%)	Saturday (17%)	April + December (22%)



Senate District 25 Crashes

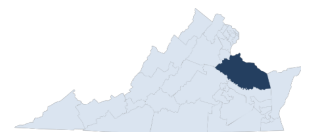
Interstate Crashes

- Fatal
- Serious Injury

Non-interstate Crashes

- Fatal
- Serious Injury

The blue gradient represents the density of all crashes.

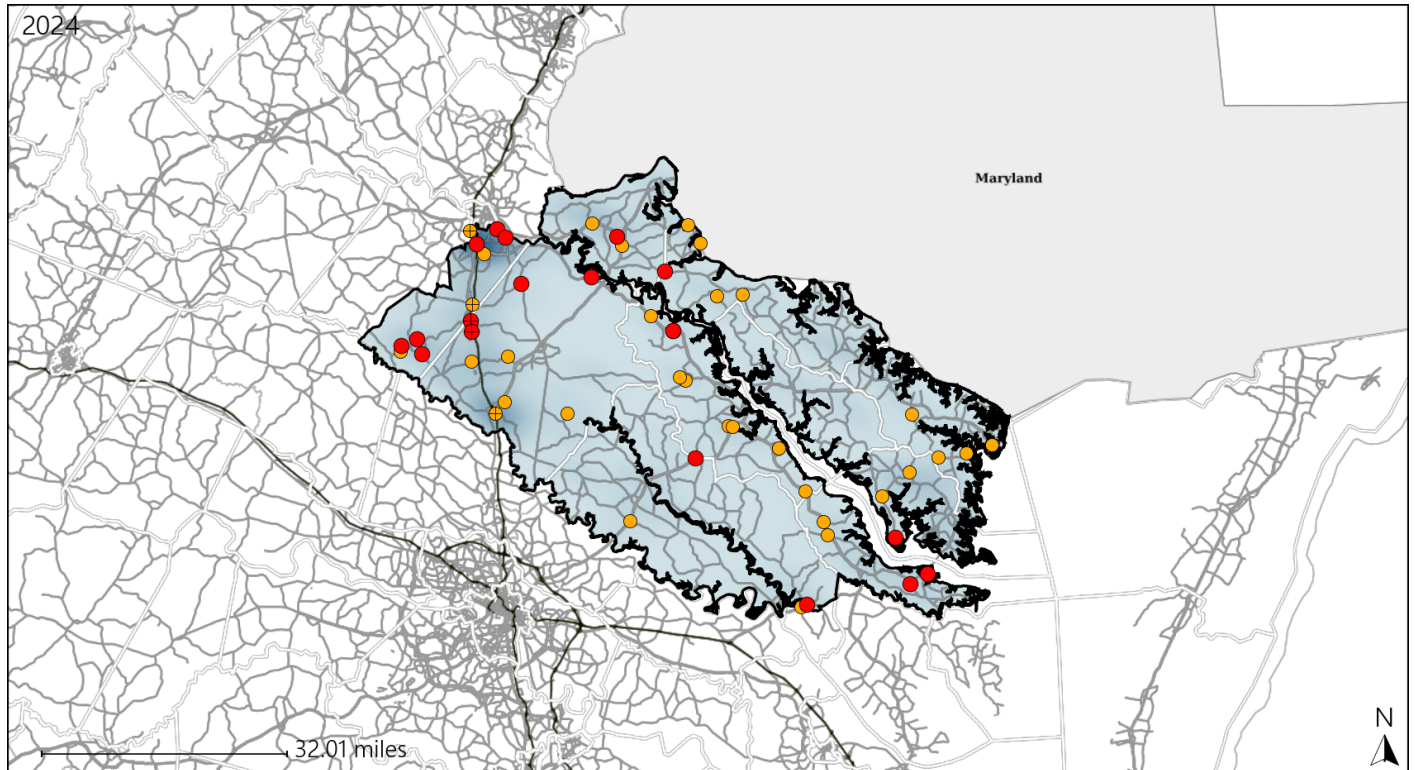


Available Crash Data - Calendar Year (CY)	CY 2021	CY 2022	CY 2023	CY 2024
Total Crashes	3350	3477	3580	3686
Fatal Crashes	53	38	39	46
Injury Crashes	856	846	939	975

Virginia Senate District 25 Alcohol Crash Statistics

Report Generated March, 2025

	Count	Highest Time Period(s)	Highest Day(s)	Highest Month(s)
Fatal Crashes	19	6:00pm - 8:59pm	Sunday	June
Resulting Fatalities	20	(32%)	(26%)	(21%)
Serious Injury Crashes	35	6:00pm - 8:59pm	Saturday	July
		(31%)	(23%)	(20%)



Senate District 25 Alcohol-Related Crashes

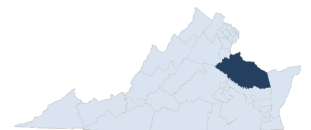
Interstate Crashes

- Fatal
- Serious Injury

Non-interstate Crashes

- Fatal
- Serious Injury

The blue gradient represents the density of all alcohol-related crashes.

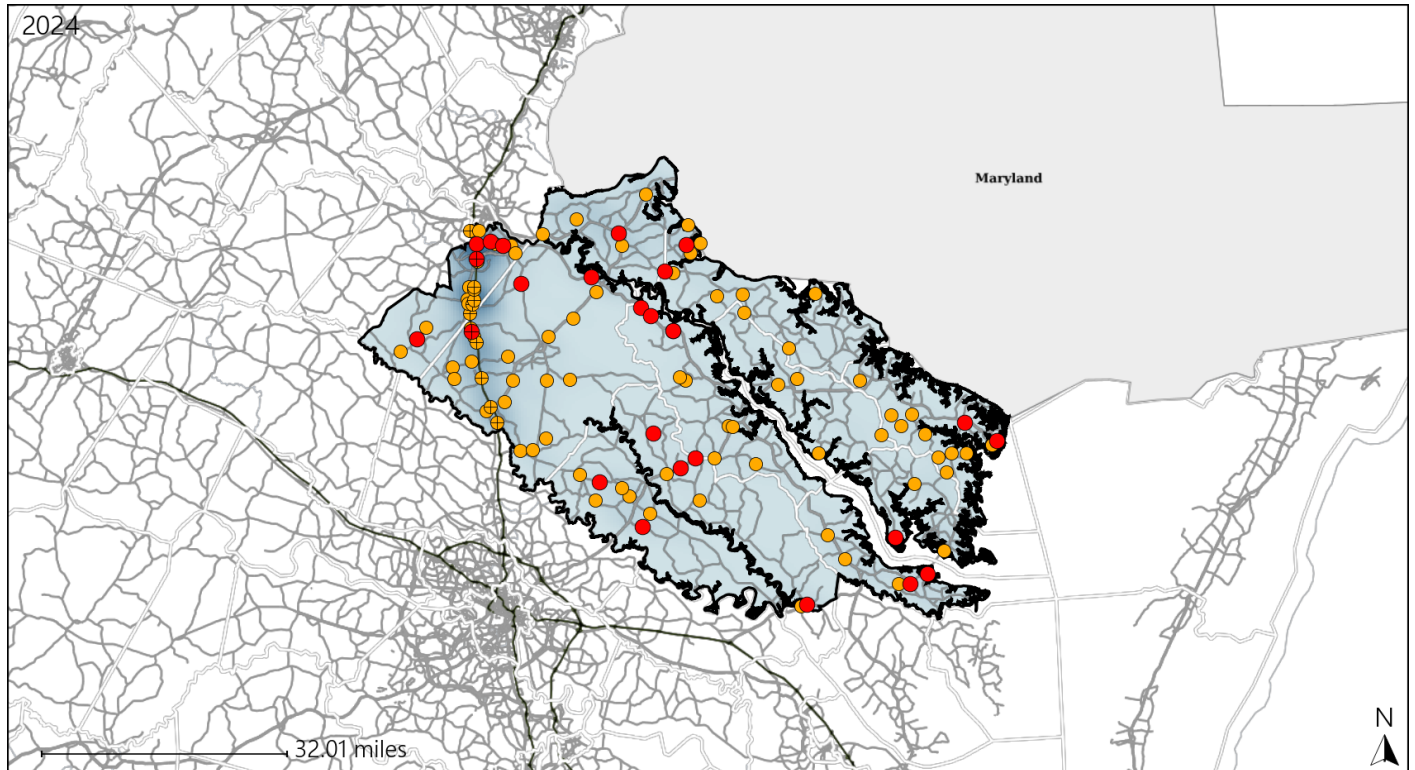


Available Crash Data - Calendar Year (CY)	CY 2021	CY 2022	CY 2023	CY 2024
Total Crashes	3350	3477	3580	3686
Fatal Crashes	53	38	39	46
Injury Crashes	856	846	939	975
Alcohol-Related Fatal Crashes	18	13	16	19
Percent of Alcohol-Related Fatal Crashes to Total Fatal Crashes	34%	34%	41%	41%
Alcohol-Related Injury Crashes	81	75	69	80
Percent of Alcohol-Related Injury Crashes to Total Injury Crashes	9%	9%	7%	8%

Virginia Senate District 25 Speed Crash Statistics

Report Generated March, 2025

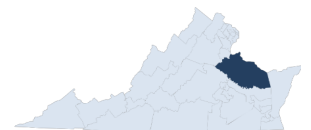
	Count	Highest Time Period(s)	Highest Day(s)	Highest Month(s)
Fatal Crashes	26	6:00pm - 8:59pm	Monday	August
Resulting Fatalities	28	(23%)	(27%)	(19%)
Serious Injury Crashes	87	6:00pm - 8:59pm	Sunday	December
		(22%)	(18%)	(13%)



Senate District 25 Speed-Related Crashes

Interstate Crashes Non-interstate Crashes
 ● Fatal ● Fatal
 ⊕ Serious Injury ⊕ Serious Injury

The blue gradient represents the density of all speed-related crashes.

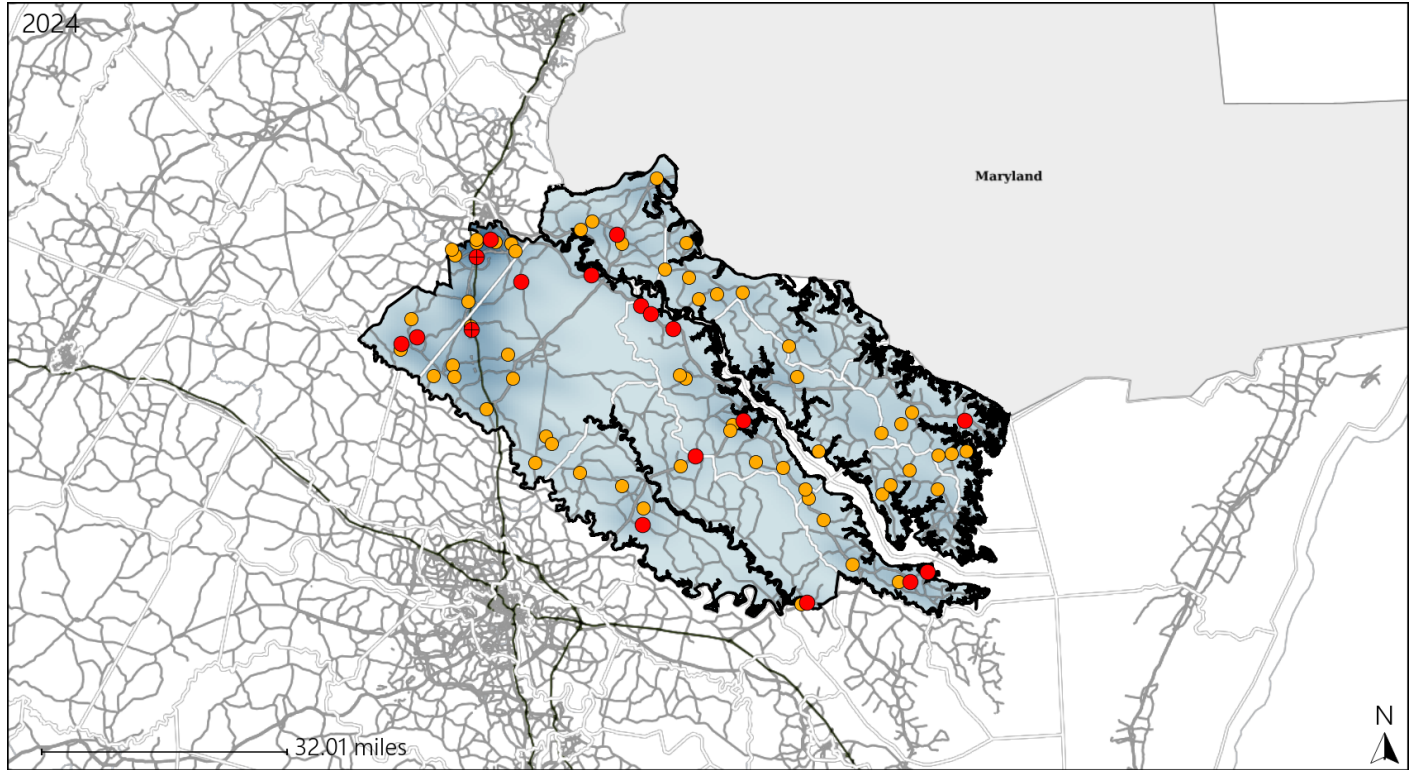


Available Crash Data - Calendar Year (CY)	CY 2021	CY 2022	CY 2023	CY 2024
Total Crashes	3350	3477	3580	3686
Fatal Crashes	53	38	39	46
Injury Crashes	856	846	939	975
Speed-Related Fatal Crashes	29	17	19	26
Percent of Speed-Related Fatal Crashes to Total Fatal Crashes	55%	45%	49%	57%
Speed-Related Injury Crashes	228	243	257	300
Percent of Speed-Related Injury Crashes to Total Injury Crashes	27%	29%	27%	31%

Virginia Senate District 25 Unrestrained Crash Statistics

Report Generated March, 2025

	Count	Highest Time Period(s)	Highest Day(s)	Highest Month(s)
Fatal Crashes	18	Midnight - 2:59am	Friday - Thursday	June
Unrestrained Fatalities	19	(28%)	(34%)	(22%)
Serious Injury Crashes	60	9:00pm - 11:59pm	Saturday	August
		(22%)	(22%)	(15%)



Senate District 25 Unrestrained-Related Crashes

Interstate Crashes

Non-interstate Crashes

- Fatal
- Serious Injury

- Fatal
- Serious Injury

The blue gradient represents the density of all unrestrained-related crashes.

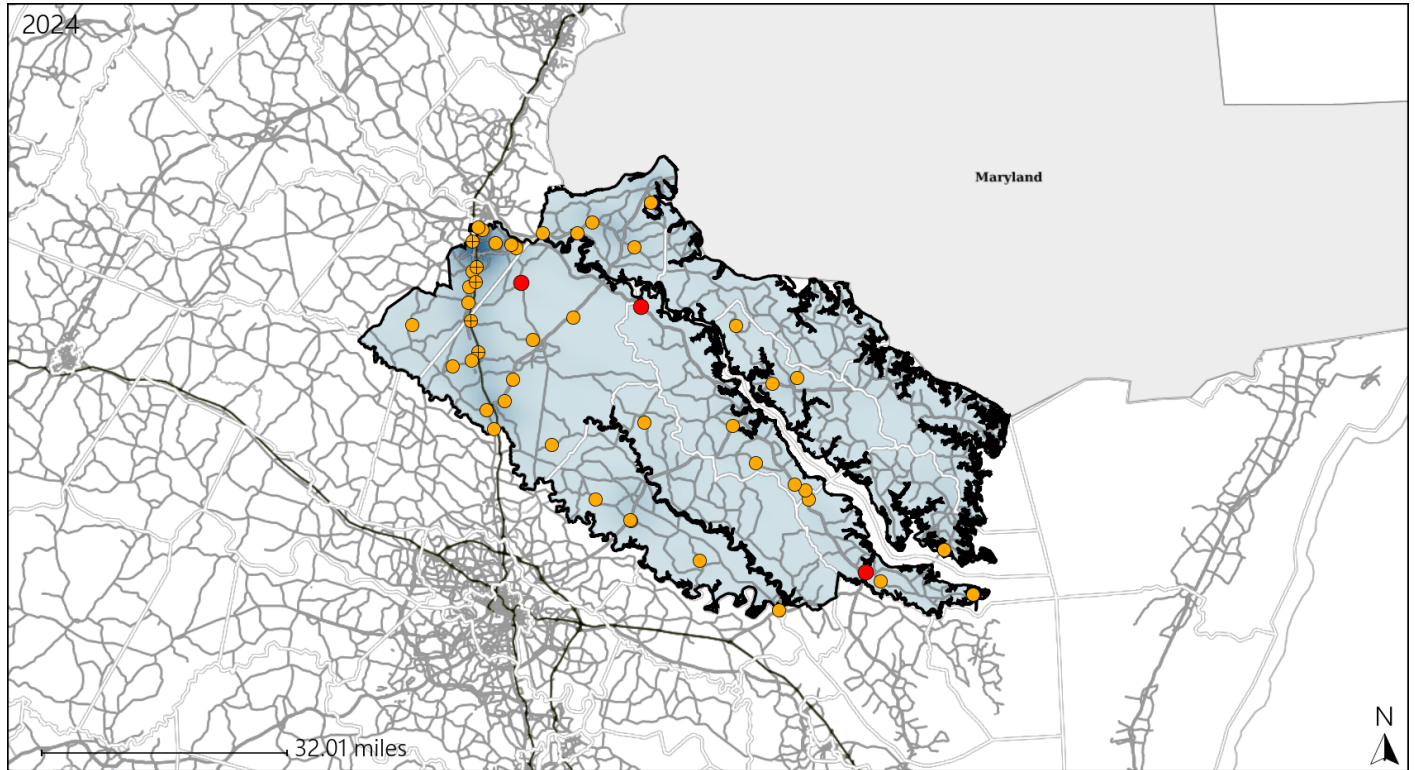


Available Crash Data - Calendar Year (CY)	CY 2021	CY 2022	CY 2023	CY 2024
Total Crashes	3350	3477	3580	3686
Fatalities	56	41	40	49
Injuries	1354	1288	1468	1518
Unrestrained Fatalities	20	15	17	19
Percent of Unrestrained Fatalities to Total Fatalities	36%	37%	43%	39%
Unrestrained Injuries	189	167	162	179
Percent of Unrestrained Injuries to Total Injuries	14%	13%	11%	12%

Virginia Senate District 25 Distracted Driving Crash Statistics

Report Generated March, 2025

	Count	Highest Time Period(s)	Highest Day(s)	Highest Month(s)
Fatal Crashes	3	3:00am - 5:59am	Monday • Tuesday	August • June
Resulting Fatalities	4	3:00pm - 5:59pm (66%)	(66%)	(66%)
Serious Injury Crashes	45	6:00pm - 8:59pm (22%)	Monday (31%)	August • December (26%)



Senate District 25 Distracted Driving-Related Crashes

Interstate Crashes

- Fatal
- Serious Injury

Non-interstate Crashes

- Fatal
- Serious Injury

The blue gradient represents the density of all distracted driving-related crashes.



Available Crash Data - Calendar Year (CY)	CY 2021	CY 2022	CY 2023	CY 2024
Total Crashes	3350	3477	3580	3686
Fatal Crashes	53	38	39	46
Injury Crashes	856	846	939	975
Distracted Driving-Related Fatal Crashes	6	3	4	3
Percent of Distracted Driving-Related Fatal Crashes to Total Fatal Crashes	11%	8%	10%	7%
Distracted Driving-Related Injury Crashes	157	147	191	197
Percent of Distracted Driving-Related Injury Crashes to Total Injury Crashes	18%	17%	20%	20%