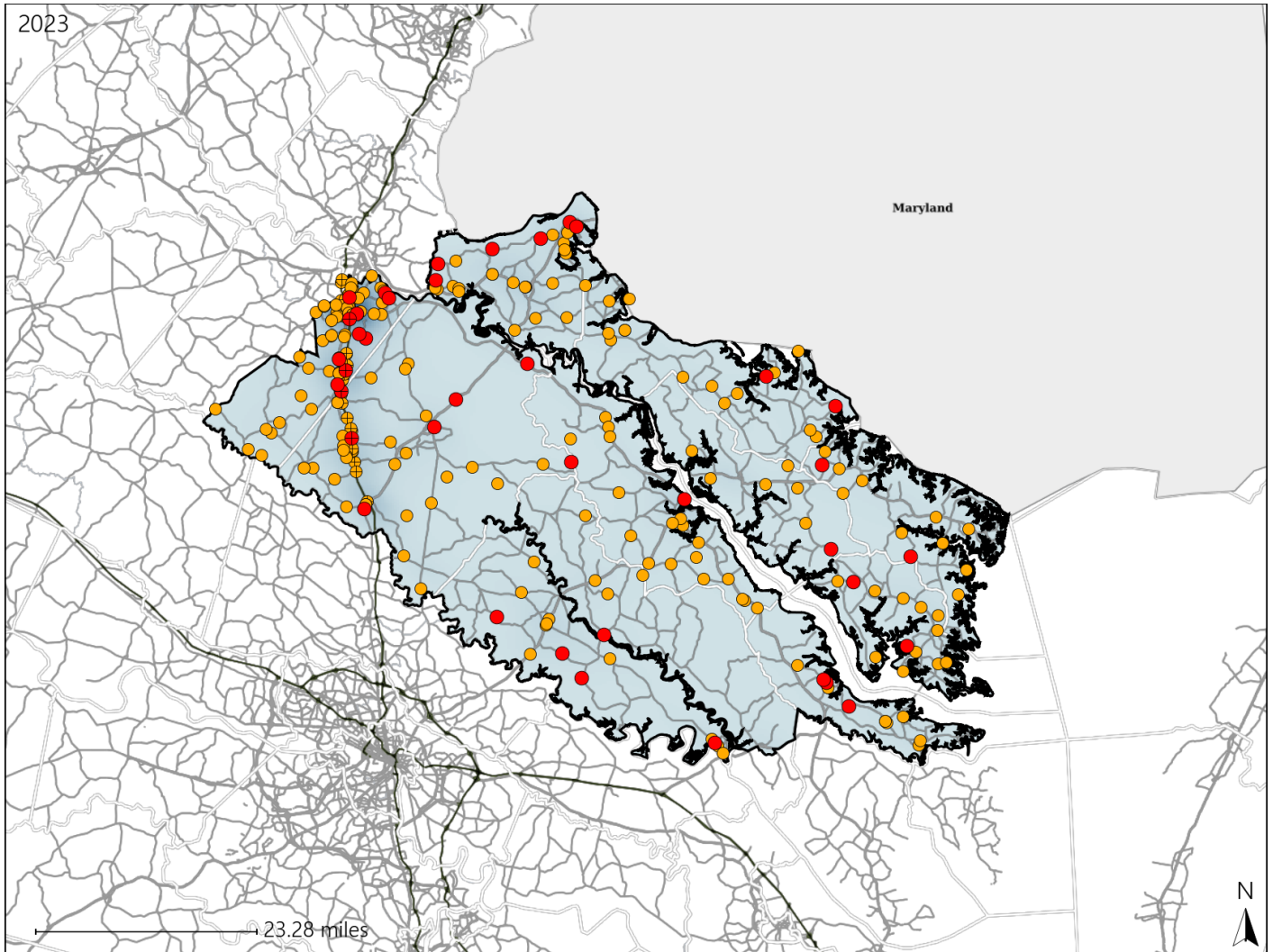


Virginia Senate District 25 Crash Statistics

Report Generated May, 2024

	Count	Highest Time Period(s)	Highest Day(s)	Highest Month(s)
Fatal Crashes	39	6:00pm - 8:59pm	Friday • Sunday	February
Resulting Fatalities	40	9:00pm - 11:59pm (42%)	(36%)	(18%)
Serious Injury Crashes	212	6:00pm - 8:59pm Noon - 2:59pm (36%)	Friday • Saturday (34%)	July (13%)



Senate District 25 Crashes

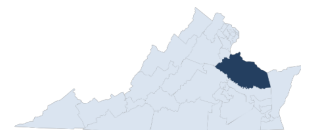
Interstate Crashes

- Fatal
- Serious Injury

Non-interstate Crashes

- Fatal
- Serious Injury

The blue gradient represents the density of all crashes.

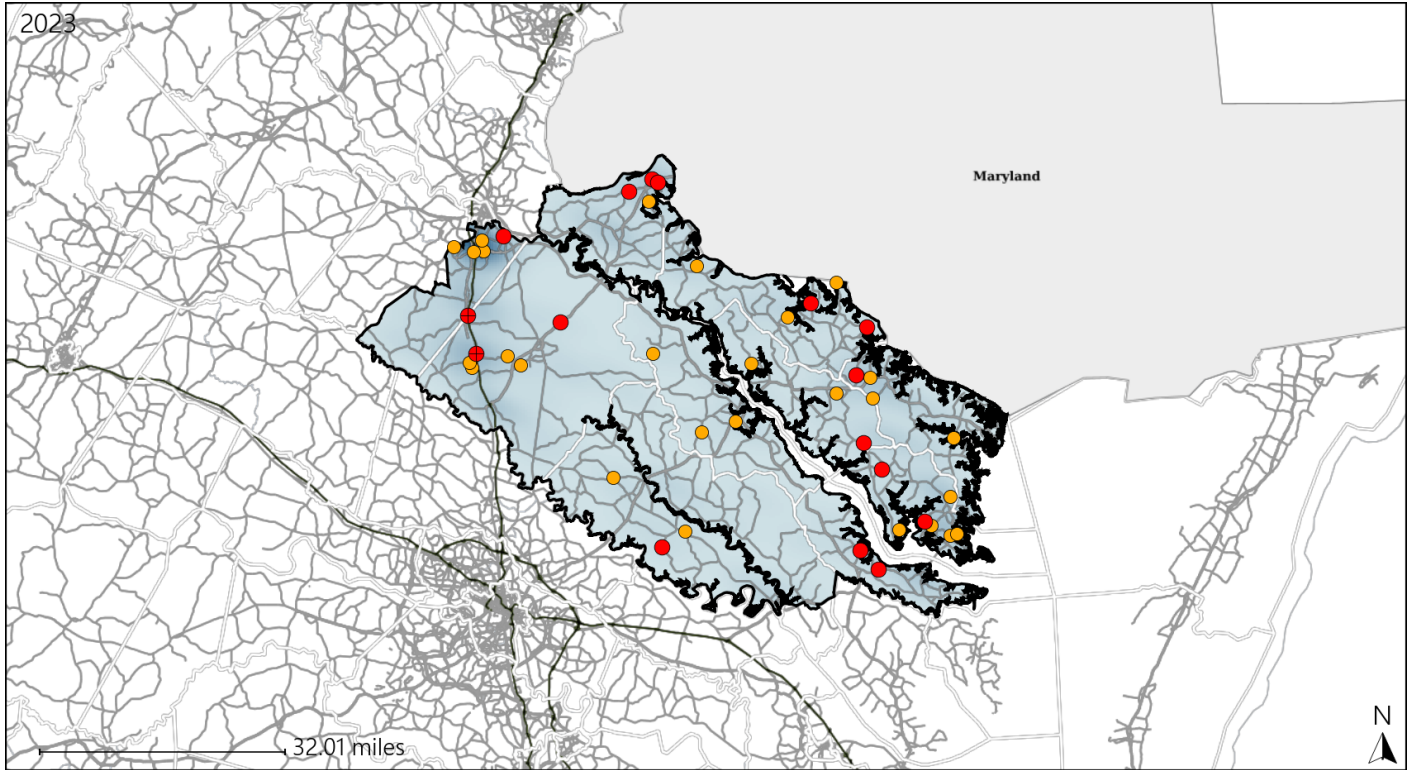


Available Crash Data - Calendar Year (CY)	CY 2020	CY 2021	CY 2022	CY 2023
Total Crashes	2869	3350	3477	3580
Fatal Crashes	38	53	38	39
Injury Crashes	775	856	846	939

Virginia Senate District 25 Alcohol Crash Statistics

Report Generated May, 2024

	Count	Highest Time Period(s)	Highest Day(s)	Highest Month(s)
Fatal Crashes	16	9:00pm - 11:59pm	Sunday	February
Resulting Fatalities	16	(38%)	(31%)	(25%)
Serious Injury Crashes	27	6:00pm - 8:59pm	Saturday	August
		(37%)	(30%)	(22%)



Senate District 25 Alcohol-Related Crashes

Interstate Crashes Non-interstate Crashes
 ● Fatal ● Fatal
 ● Serious Injury ● Serious Injury

The blue gradient represents the density of all alcohol-related crashes.

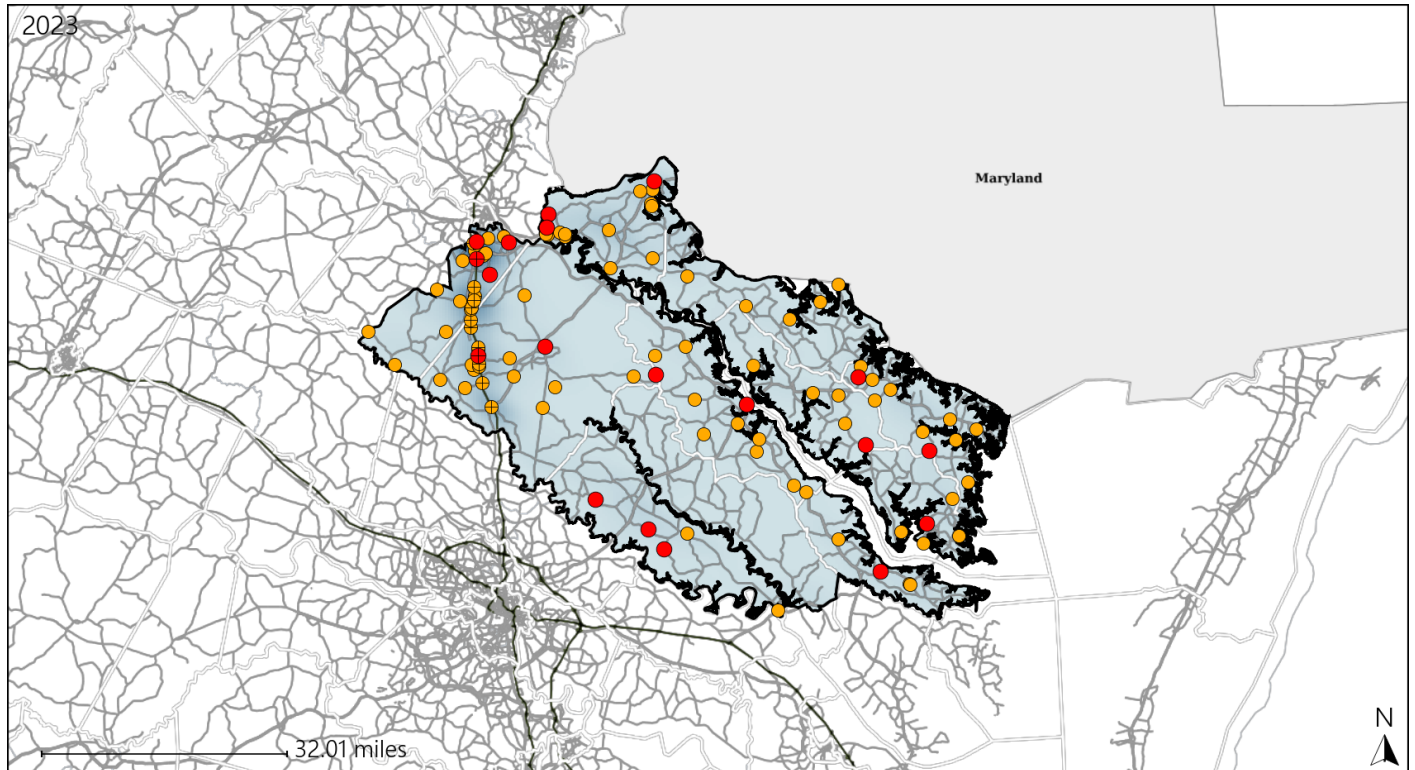


Available Crash Data - Calendar Year (CY)	CY 2020	CY 2021	CY 2022	CY 2023
Total Crashes	2869	3350	3477	3580
Fatal Crashes	38	53	38	39
Injury Crashes	775	856	846	939
Alcohol-Related Fatal Crashes	9	18	13	16
Percent of Alcohol-Related Fatal Crashes to Total Fatal Crashes	24%	34%	34%	41%
Alcohol-Related Injury Crashes	83	81	75	69
Percent of Alcohol-Related Injury Crashes to Total Injury Crashes	11%	9%	9%	7%

Virginia Senate District 25 Speed Crash Statistics

Report Generated May, 2024

	Count	Highest Time Period(s)	Highest Day(s)	Highest Month(s)
Fatal Crashes	19	9:00pm - 11:59pm	Sunday	February
Resulting Fatalities	20	(26%)	(32%)	(21%)
Serious Injury Crashes	86	6:00pm - 8:59pm	Saturday	December
		(22%)	(22%)	(16%)



Senate District 25 Speed-Related Crashes

Interstate Crashes Non-interstate Crashes
 ● Fatal ● Fatal
 ⊕ Serious Injury ⊕ Serious Injury

The blue gradient represents the density of all speed-related crashes.

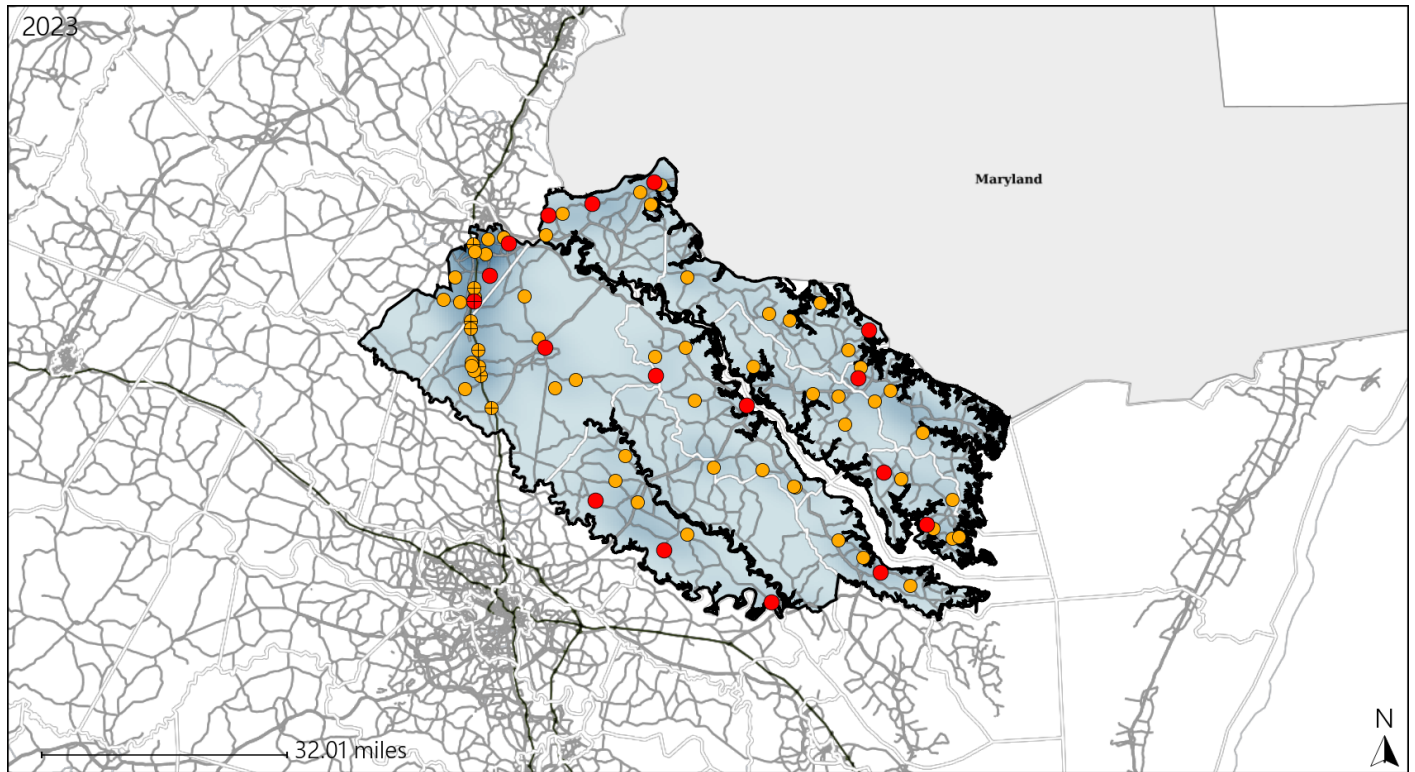


Available Crash Data - Calendar Year (CY)	CY 2020	CY 2021	CY 2022	CY 2023
Total Crashes	2869	3350	3477	3580
Fatal Crashes	38	53	38	39
Injury Crashes	775	856	846	939
Speed-Related Fatal Crashes	19	29	17	19
Percent of Speed-Related Fatal Crashes to Total Fatal Crashes	50%	55%	45%	49%
Speed-Related Injury Crashes	218	228	243	257
Percent of Speed-Related Injury Crashes to Total Injury Crashes	28%	27%	29%	27%

Virginia Senate District 25 Unrestrained Crash Statistics

Report Generated May, 2024

	Count	Highest Time Period(s)	Highest Day(s)	Highest Month(s)
Fatal Crashes	17	6:00pm - 8:59pm	Monday • Saturday	April • February
Unrestrained Fatalities	17	(29%)	(48%)	(36%)
Serious Injury Crashes	61	6:00pm - 8:59pm 9:00pm - 11:59pm	Friday	December • June
		(36%)	(20%)	(30%)



Senate District 25 Unrestrained-Related Crashes

Interstate Crashes

- Fatal
- ⊕ Serious Injury

Non-interstate Crashes

- Fatal
- Serious Injury

The blue gradient represents the density of all unrestrained-related crashes.

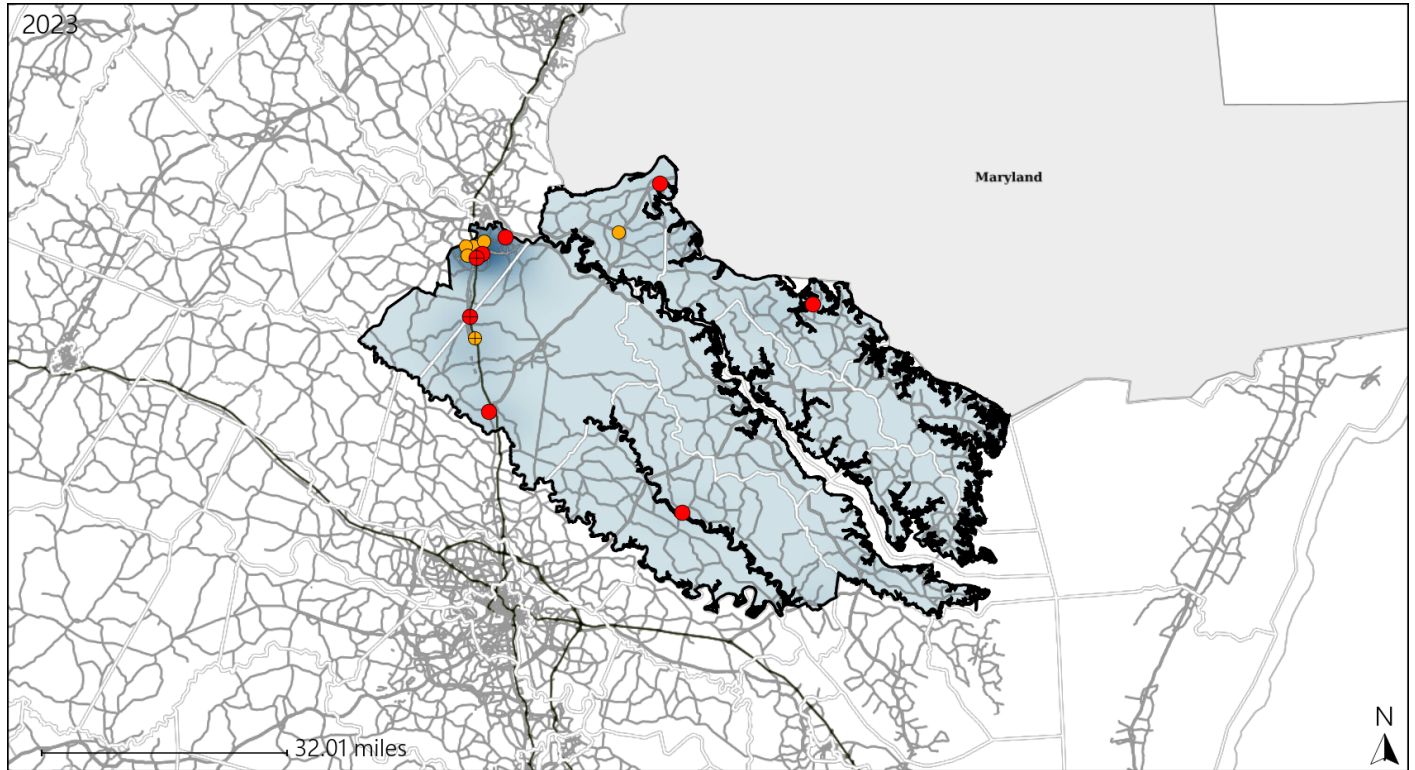


Available Crash Data - Calendar Year (CY)	CY 2020	CY 2021	CY 2022	CY 2023
Total Crashes	2869	3350	3477	3580
Fatalities	42	56	41	40
Injuries	1080	1354	1288	1468
Unrestrained Fatalities	20	20	15	17
Percent of Unrestrained Fatalities to Total Fatalities	48%	36%	37%	43%
Unrestrained Injuries	148	189	167	162
Percent of Unrestrained Injuries to Total Injuries	14%	14%	13%	11%

Virginia Senate District 25 Pedestrian Crash Statistics

Report Generated May, 2024

	Count	Highest Time Period(s)	Highest Day(s)	Highest Month(s)
Fatal Crashes	8	3:00am - 5:59am	Friday • Tuesday	February • March
Pedestrian Fatalities	8	6:00am - 8:59am (50%)	(50%)	(50%)
Serious Injury Crashes	7	6:00pm - 8:59pm (43%)	Friday • Thursday (58%)	December • March (58%)



Senate District 25 Pedestrian-Related Crashes

Interstate Crashes

Non-interstate Crashes

- Fatal
- Serious Injury

- Fatal
- Serious Injury

The blue gradient represents the density of all pedestrian-related crashes.

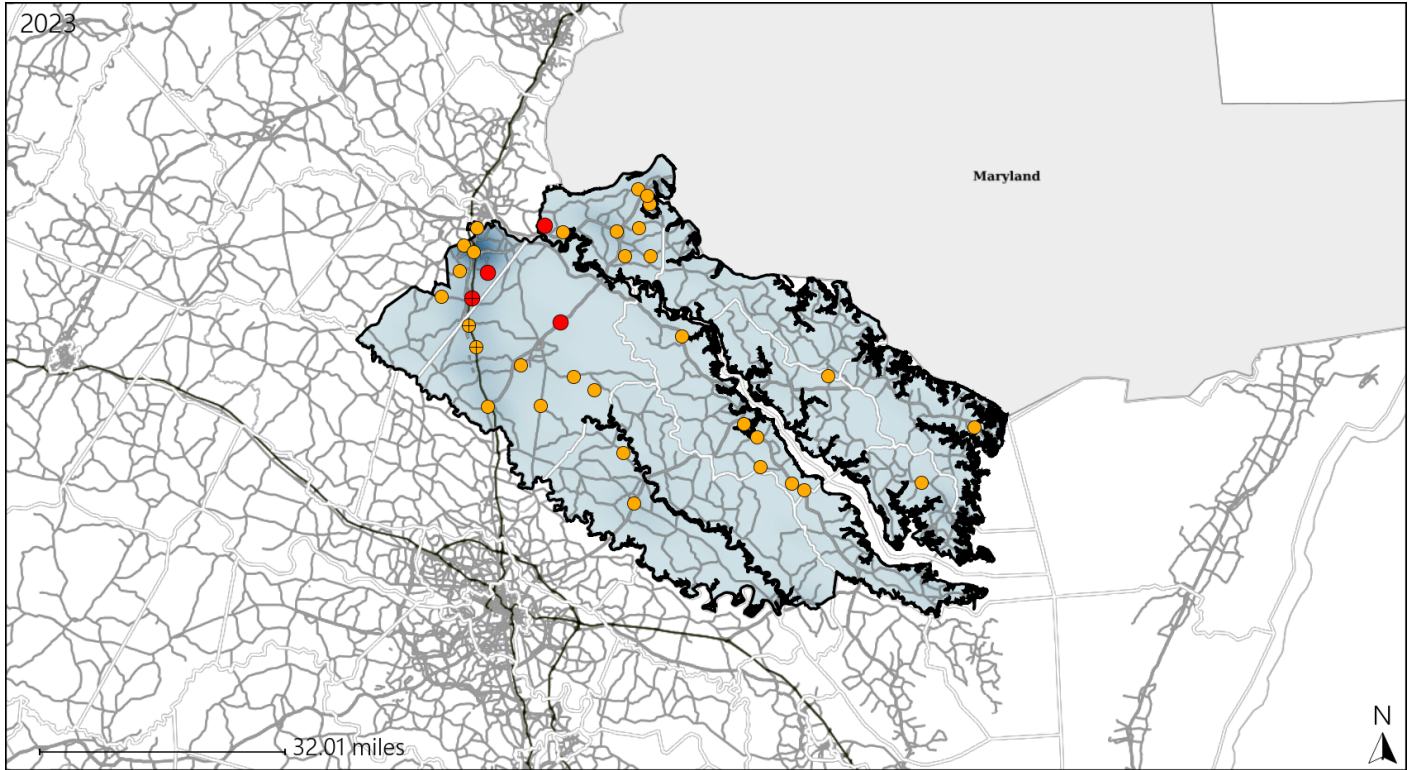


Available Crash Data - Calendar Year (CY)	CY 2020	CY 2021	CY 2022	CY 2023
Total Crashes	2869	3350	3477	3580
Fatal Crashes	38	53	38	39
Injury Crashes	775	856	846	939
Pedestrian-Related Fatal Crashes	0	4	4	8
Percent of Pedestrian-Related Fatal Crashes to Total Fatal Crashes	0%	8%	11%	21%
Pedestrian-Related Injury Crashes	20	12	14	22
Percent of Pedestrian-Related Injury Crashes to Total Injury Crashes	3%	1%	2%	2%

Virginia Senate District 25 Distracted Driving Crash Statistics

Report Generated May, 2024

	Count	Highest Time Period(s)	Highest Day(s)	Highest Month(s)
Fatal Crashes	4	6:00am - 8:59am	Friday • Tuesday	September
Resulting Fatalities	4	(50%)	(100%)	(50%)
Serious Injury Crashes	31	6:00am - 8:59am	Monday	May
		(35%)	(29%)	(16%)



Senate District 25 Distracted Driving-Related Crashes

- | | |
|--|--|
| Interstate Crashes | Non-interstate Crashes |
| ● Fatal | ● Fatal |
| ● Serious Injury | ● Serious Injury |

The blue gradient represents the density of all distracted driving-related crashes.



Available Crash Data - Calendar Year (CY)	CY 2020	CY 2021	CY 2022	CY 2023
Total Crashes	2869	3350	3477	3580
Fatal Crashes	38	53	38	39
Injury Crashes	775	856	846	939
Distracted Driving-Related Fatal Crashes	4	6	3	4
Percent of Distracted Driving-Related Fatal Crashes to Total Fatal Crashes	11%	11%	8%	10%
Distracted Driving-Related Injury Crashes	150	157	147	191
Percent of Distracted Driving-Related Injury Crashes to Total Injury Crashes	19%	18%	17%	20%