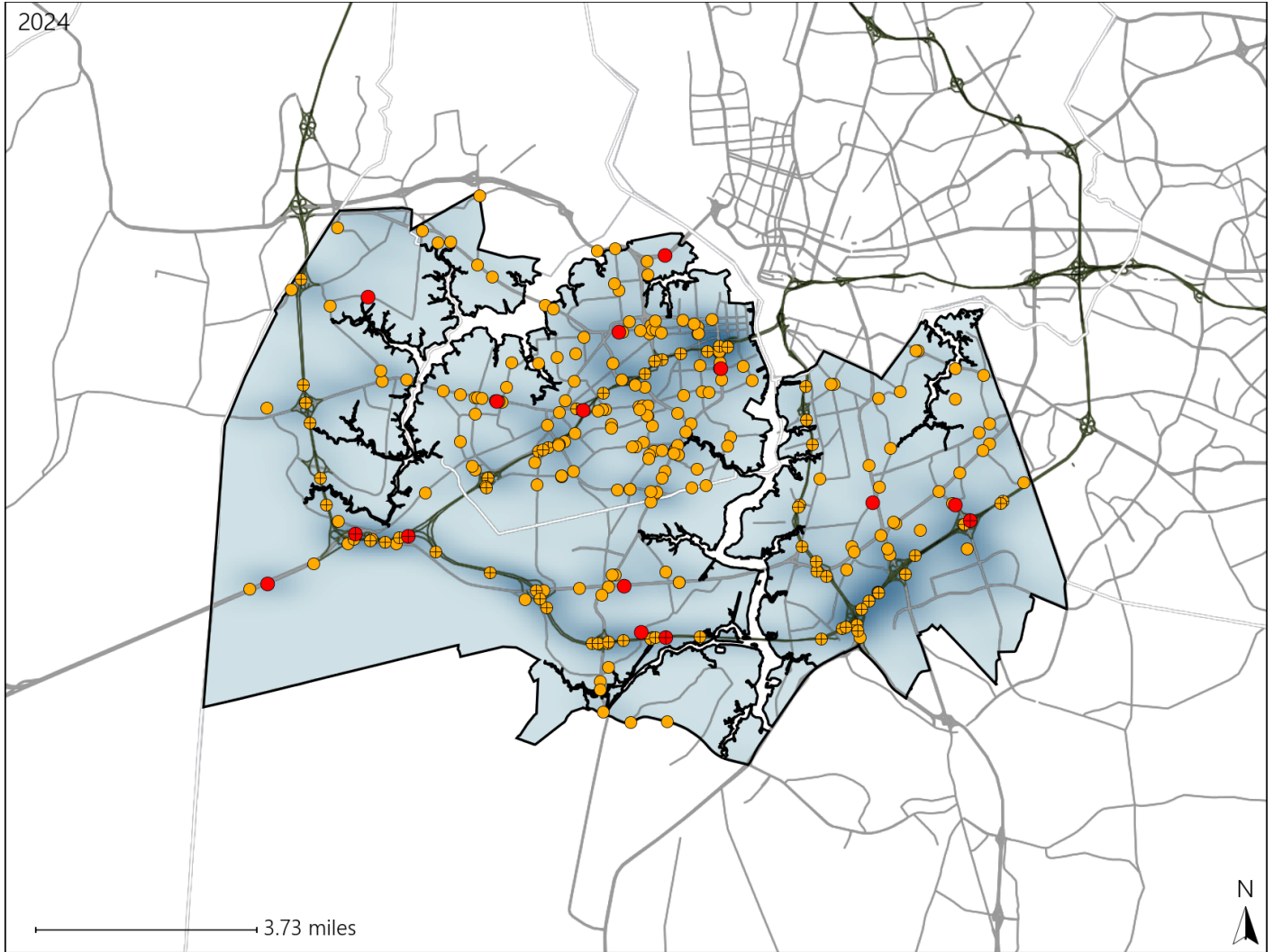


Virginia Senate District 18 Crash Statistics

Report Generated March, 2025

	Count	Highest Time Period(s)	Highest Day(s)	Highest Month(s)
Fatal Crashes	15	9:00pm - 11:59pm	Saturday	May
Resulting Fatalities	15	(27%)	(27%)	(20%)
Serious Injury Crashes	252	3:00pm - 5:59pm	Friday	May • July
		(20%)	(17%)	(22%)



Senate District 18 Crashes

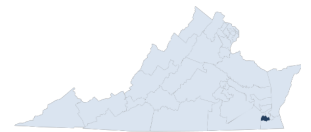
Interstate Crashes

- Fatal
- Serious Injury

Non-interstate Crashes

- Fatal
- Serious Injury

The blue gradient represents the density of all crashes.

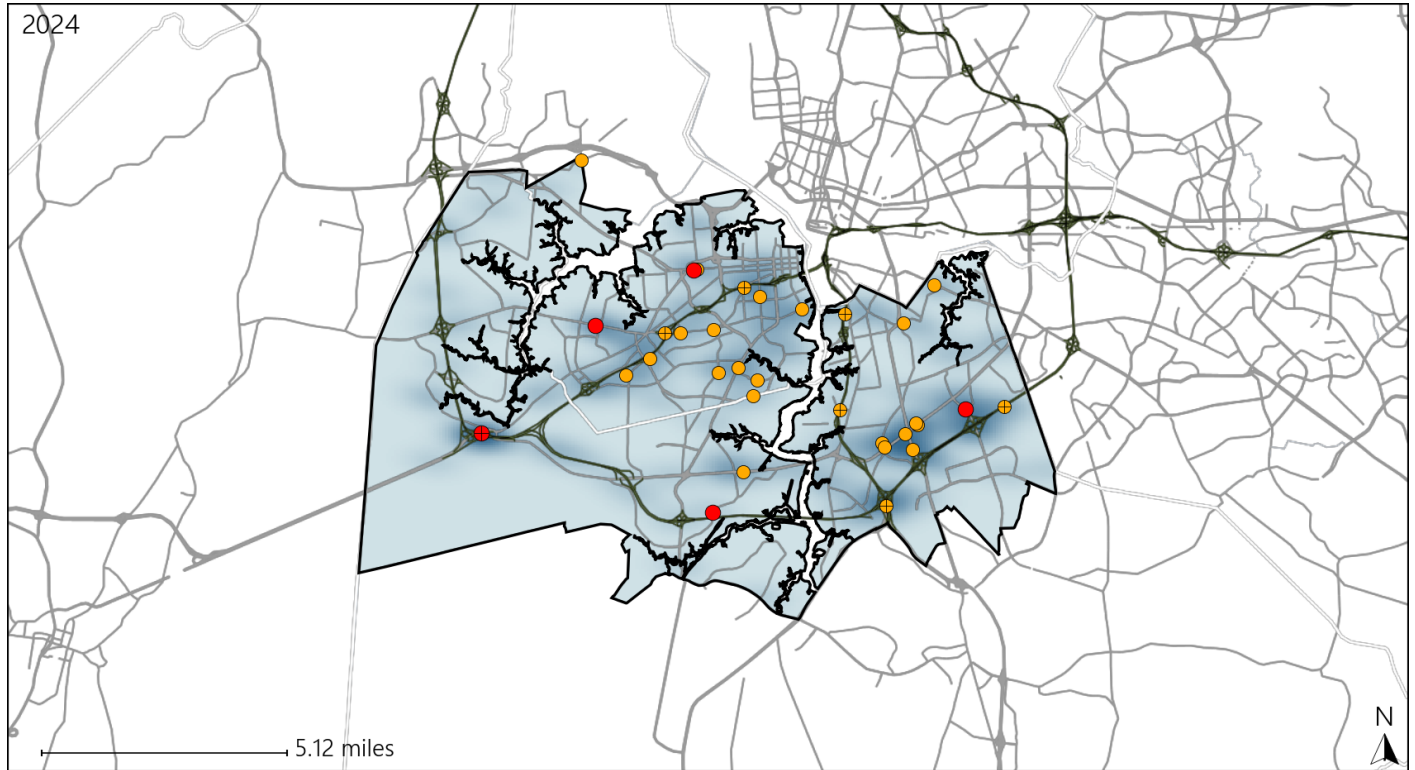


Available Crash Data - Calendar Year (CY)	CY 2021	CY 2022	CY 2023	CY 2024
Total Crashes	3150	3000	3252	2786
Fatal Crashes	27	20	18	15
Injury Crashes	1330	1259	1383	1237

Virginia Senate District 18 Alcohol Crash Statistics

Report Generated March, 2025

	Count	Highest Time Period(s)	Highest Day(s)	Highest Month(s)
Fatal Crashes	5	3:00am - 5:59am	Saturday	April • June
Resulting Fatalities	5	6:00am - 8:59am (40%)	(60%)	(40%)
Serious Injury Crashes	28	Midnight - 2:59am (29%)	Saturday (36%)	November (21%)



Senate District 18 Alcohol-Related Crashes

Interstate Crashes

Non-interstate Crashes

● Fatal

● Fatal

⊕ Serious Injury

⊕ Serious Injury

The blue gradient represents the density of all alcohol-related crashes.

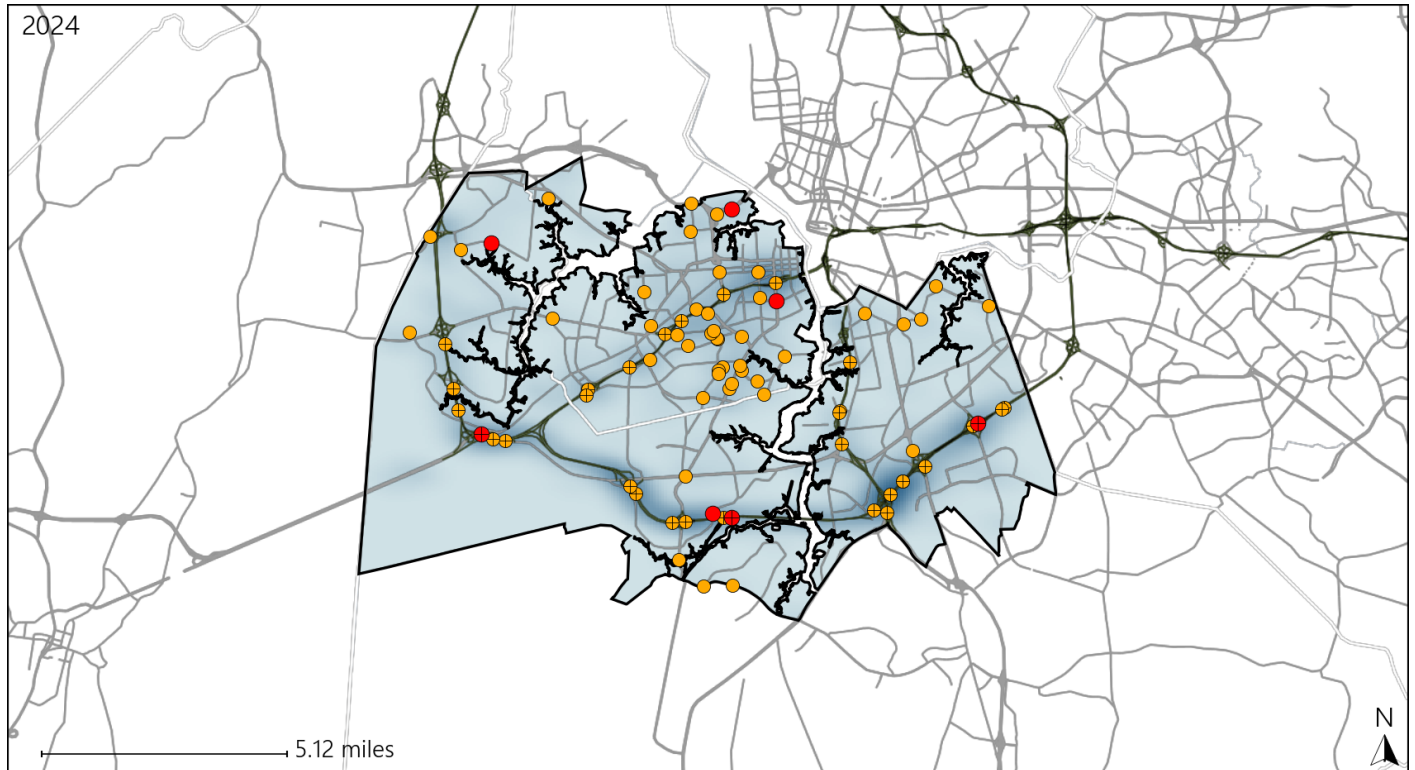


Available Crash Data - Calendar Year (CY)	CY 2021	CY 2022	CY 2023	CY 2024
Total Crashes	3150	3000	3252	2786
Fatal Crashes	27	20	18	15
Injury Crashes	1330	1259	1383	1237
Alcohol-Related Fatal Crashes	8	6	3	5
Percent of Alcohol-Related Fatal Crashes to Total Fatal Crashes	30%	30%	17%	33%
Alcohol-Related Injury Crashes	99	73	100	85
Percent of Alcohol-Related Injury Crashes to Total Injury Crashes	7%	6%	7%	7%

Virginia Senate District 18 Speed Crash Statistics

Report Generated March, 2025

	Count	Highest Time Period(s)	Highest Day(s)	Highest Month(s)
Fatal Crashes	7	9:00pm - 11:59pm	Saturday	August + June
Resulting Fatalities	7	(29%)	(43%)	(58%)
Serious Injury Crashes	75	3:00pm - 5:59pm	Monday	June
		(21%)	(19%)	(15%)



Senate District 18 Speed-Related Crashes

Interstate Crashes Non-interstate Crashes
 ● Fatal ● Fatal
 ⊕ Serious Injury ⊕ Serious Injury

The blue gradient represents the density of all speed-related crashes.

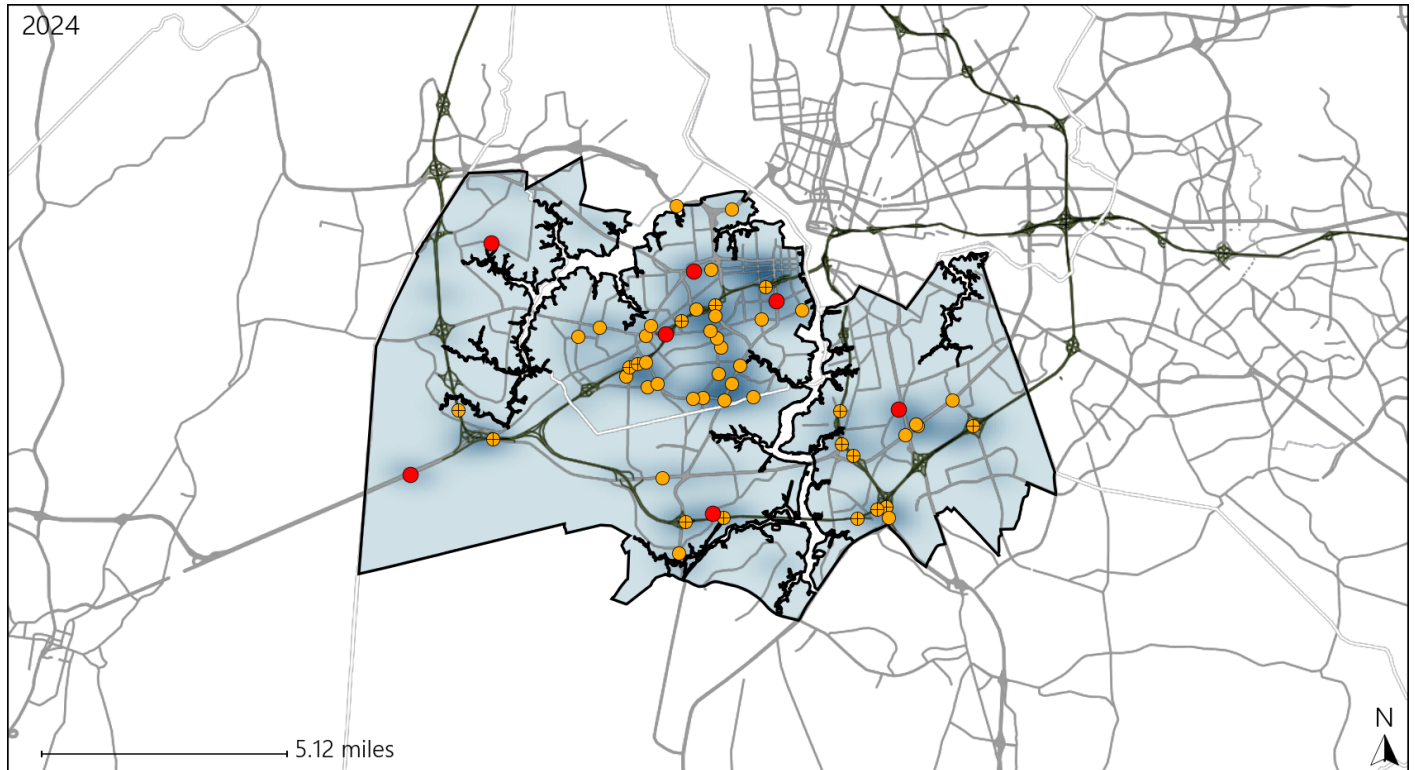


Available Crash Data - Calendar Year (CY)	CY 2021	CY 2022	CY 2023	CY 2024
Total Crashes	3150	3000	3252	2786
Fatal Crashes	27	20	18	15
Injury Crashes	1330	1259	1383	1237
Speed-Related Fatal Crashes	15	5	8	7
Percent of Speed-Related Fatal Crashes to Total Fatal Crashes	56%	25%	44%	47%
Speed-Related Injury Crashes	297	293	270	267
Percent of Speed-Related Injury Crashes to Total Injury Crashes	22%	23%	20%	22%

Virginia Senate District 18 Unrestrained Crash Statistics

Report Generated March, 2025

	Count	Highest Time Period(s)	Highest Day(s)	Highest Month(s)
Fatal Crashes	7	3:00am - 5:59am	Friday • Sunday	June • March
Unrestrained Fatalities	7	(29%)	(58%)	(58%)
Serious Injury Crashes	49	Midnight - 2:59am	Sunday	June • March
		(20%)	(27%)	(24%)



Senate District 18 Unrestrained-Related Crashes

Interstate Crashes

Non-interstate Crashes

- Fatal
- Serious Injury

- Fatal
- Serious Injury

The blue gradient represents the density of all unrestrained-related crashes.

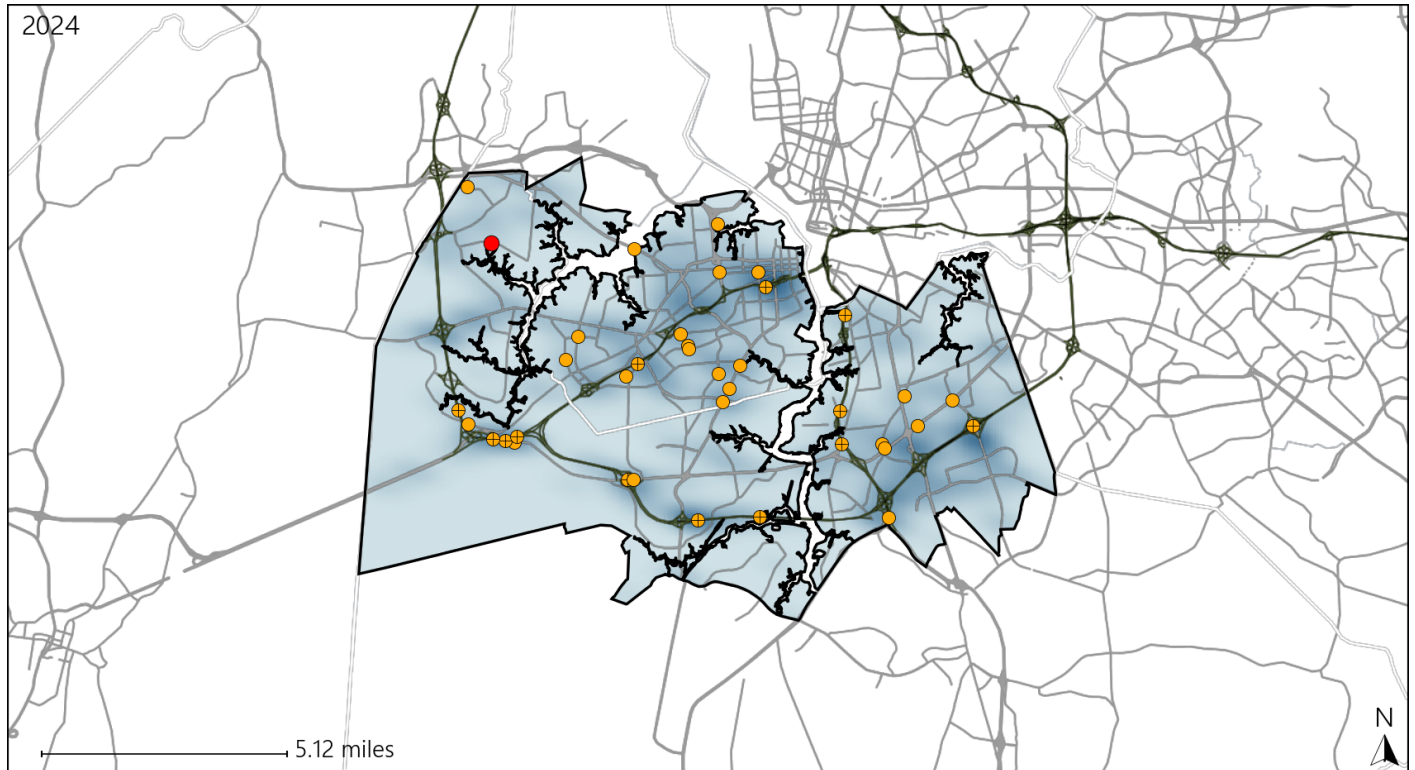


Available Crash Data - Calendar Year (CY)	CY 2021	CY 2022	CY 2023	CY 2024
Total Crashes	3150	3000	3252	2786
Fatalities	29	21	19	15
Injuries	2083	1955	2246	1960
Unrestrained Fatalities	9	6	5	7
Percent of Unrestrained Fatalities to Total Fatalities	31%	29%	26%	47%
Unrestrained Injuries	130	92	143	130
Percent of Unrestrained Injuries to Total Injuries	6%	5%	6%	7%


Virginia Senate District 18 Distracted Driving Crash Statistics

Report Generated March, 2025

	Count	Highest Time Period(s)	Highest Day(s)	Highest Month(s)
Fatal Crashes	1	9:00am - 11:59am	Thursday	November
Resulting Fatalities	1	(100%)	(100%)	(100%)
Serious Injury Crashes	37	3:00pm - 5:59pm	Sunday	January - June
		(24%)	(24%)	(32%)



Senate District 18 Distracted Driving-Related Crashes

- | | |
|--|--|
| Interstate Crashes | Non-interstate Crashes |
|  Fatal |  Fatal |
|  Serious Injury |  Serious Injury |

The blue gradient represents the density of all distracted driving-related crashes.



Available Crash Data - Calendar Year (CY)	CY 2021	CY 2022	CY 2023	CY 2024
Total Crashes	3150	3000	3252	2786
Fatal Crashes	27	20	18	15
Injury Crashes	1330	1259	1383	1237
Distracted Driving-Related Fatal Crashes	4	0	2	1
Percent of Distracted Driving-Related Fatal Crashes to Total Fatal Crashes	15%	0%	11%	7%
Distracted Driving-Related Injury Crashes	198	184	264	214
Percent of Distracted Driving-Related Injury Crashes to Total Injury Crashes	15%	15%	19%	17%