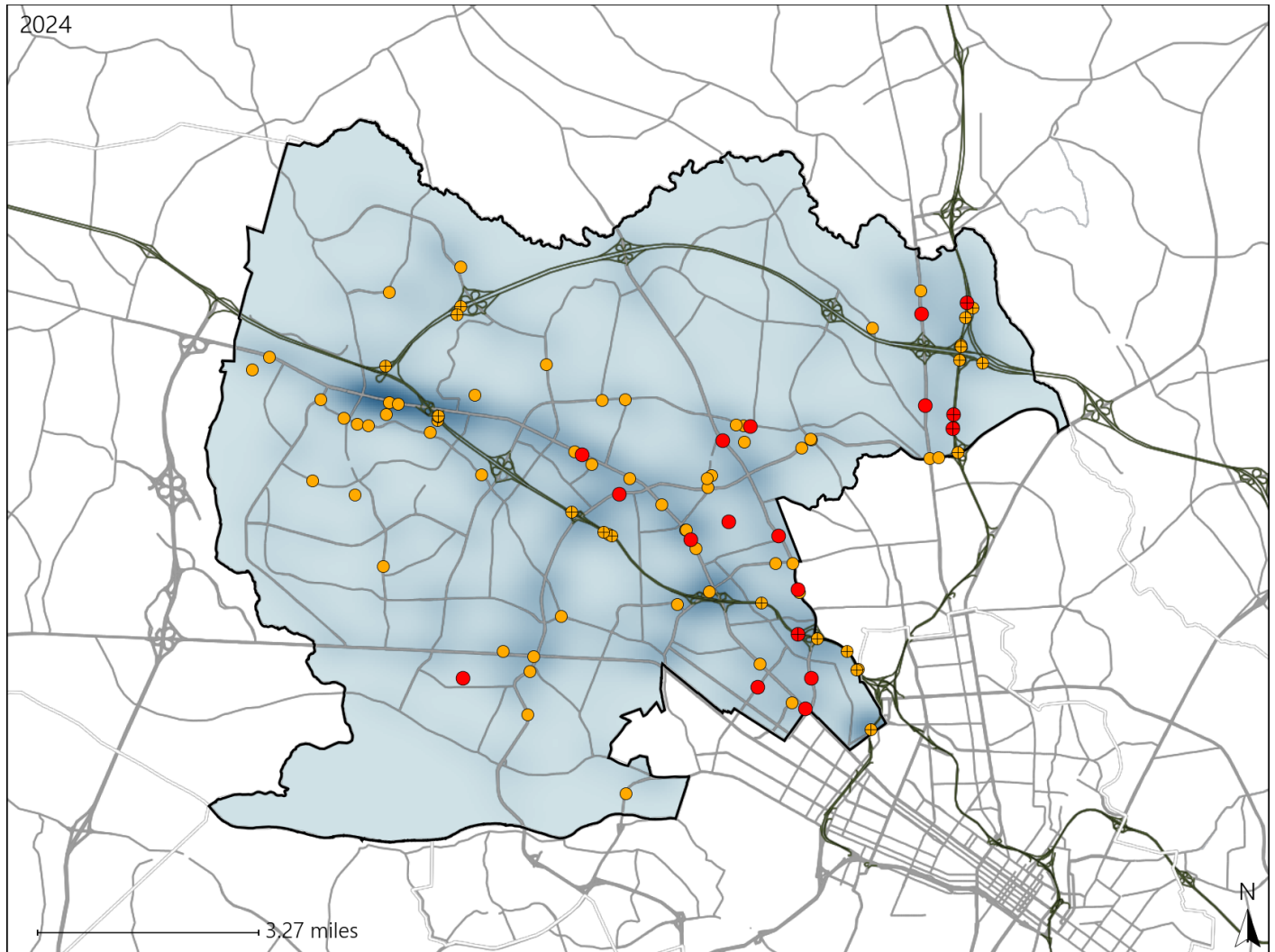


Report of Crashes for January 1st - December 31st, 2024

Virginia Senate District 16 Crash Statistics

Report Generated March, 2025

	Count	Highest Time Period(s)	Highest Day(s)	Highest Month(s)
Fatal Crashes	18	9:00pm - 11:59pm	Monday • Sunday	August
Resulting Fatalities	18	(28%)	(66%)	(22%)
Serious Injury Crashes	78	3:00pm - 5:59pm	Tuesday	September
		6:00pm - 8:59pm	(19%)	(13%)
		(36%)		



Senate District 16 Crashes

Interstate Crashes

- Fatal
- Serious Injury

Non-interstate Crashes

- Fatal
- Serious Injury

The blue gradient represents the density of all crashes.



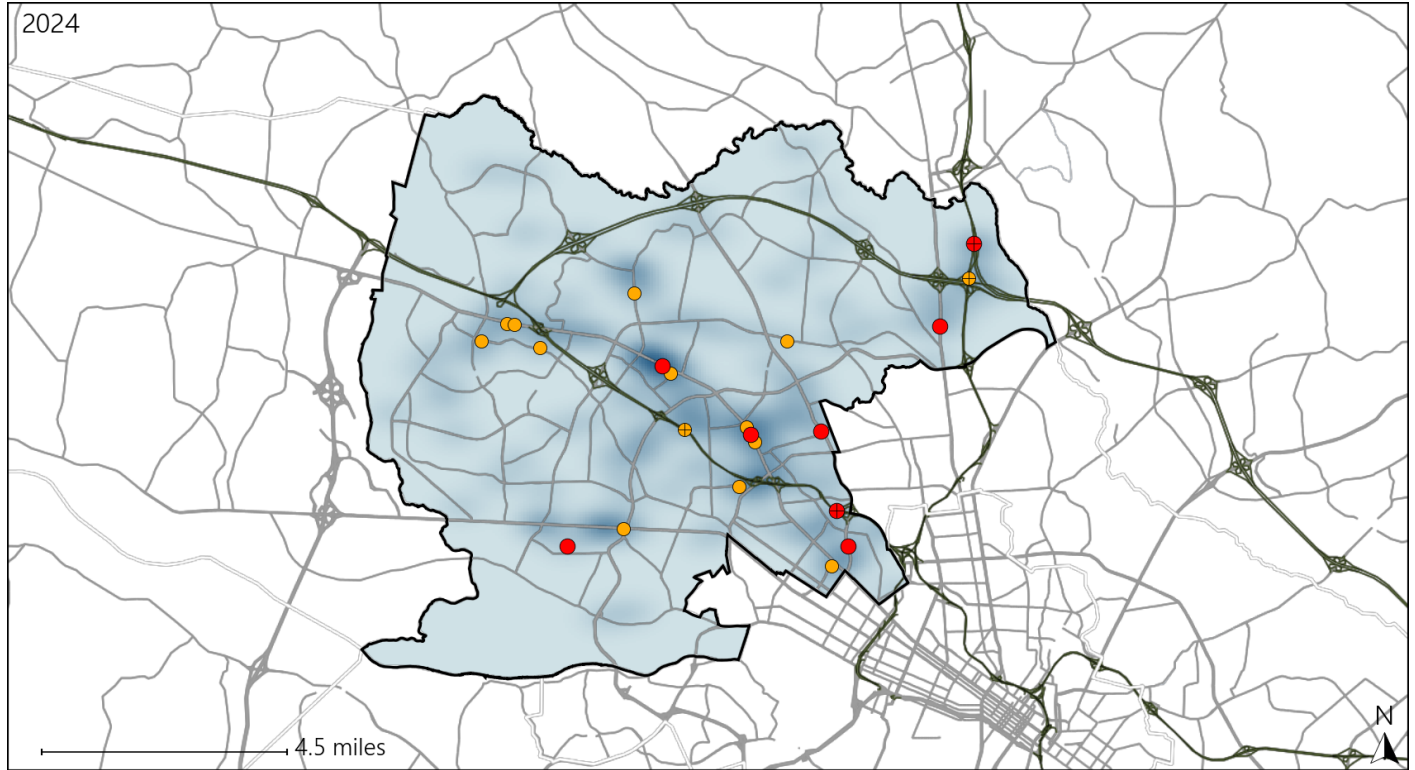
Available Crash Data - Calendar Year (CY)	CY 2021	CY 2022	CY 2023	CY 2024
Total Crashes	2934	3126	3254	3265
Fatal Crashes	16	8	12	18
Injury Crashes	746	811	812	756

Report of Crashes for January 1st - December 31st, 2024

Virginia Senate District 16 Alcohol Crash Statistics

Report Generated March, 2025

	Count	Highest Time Period(s)	Highest Day(s)	Highest Month(s)
Fatal Crashes	8	9:00pm - 11:59pm	Sunday	June • May
Resulting Fatalities	8	(50%)	(38%)	(50%)
Serious Injury Crashes	14	9:00pm - 11:59pm	Sunday • Thursday	January
		(29%)	(42%)	(21%)



Senate District 16 Alcohol-Related Crashes

Interstate Crashes

Non-interstate Crashes

- Fatal
- Serious Injury

- Fatal
- Serious Injury

The blue gradient represents the density of all alcohol-related crashes.

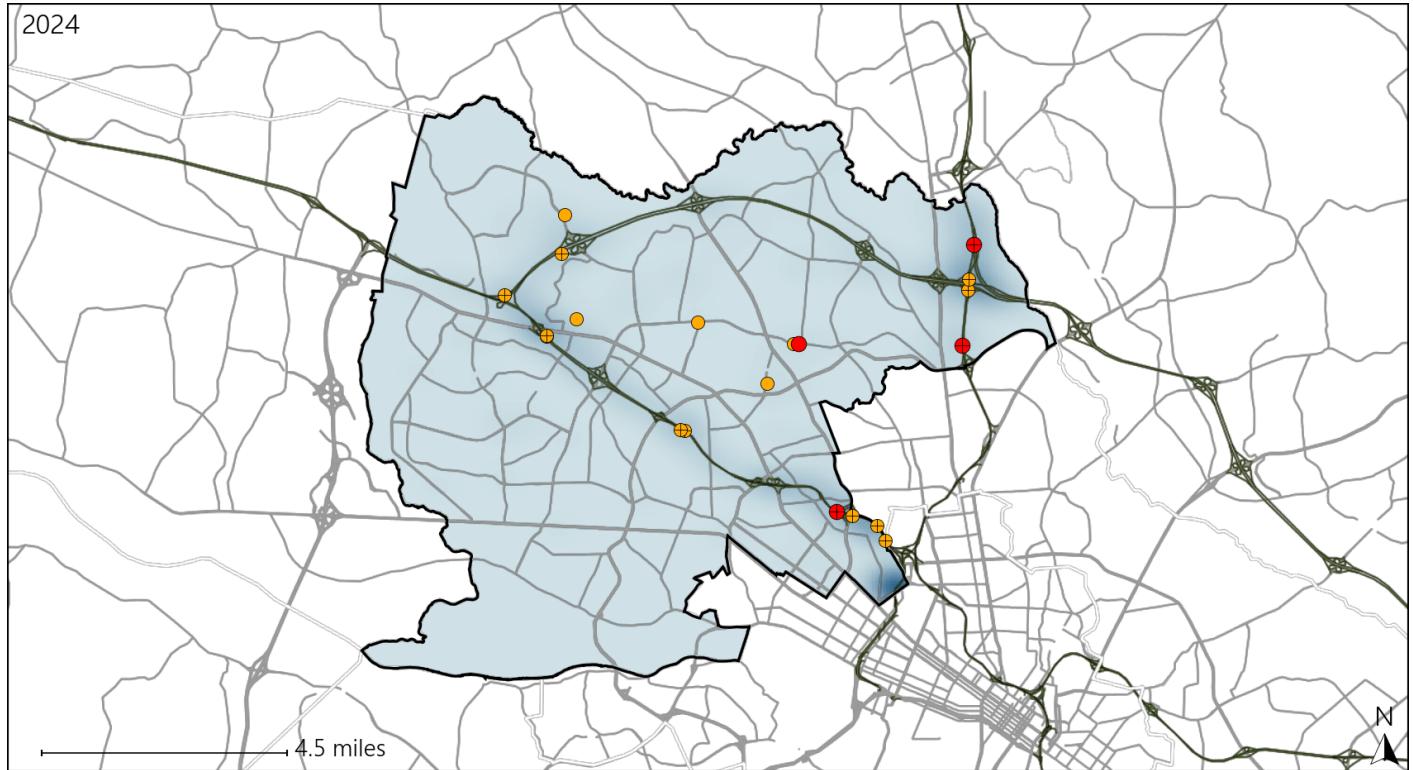


Available Crash Data - Calendar Year (CY)	CY 2021	CY 2022	CY 2023	CY 2024
Total Crashes	2934	3126	3254	3265
Fatal Crashes	16	8	12	18
Injury Crashes	746	811	812	756
Alcohol-Related Fatal Crashes	5	2	6	8
Percent of Alcohol-Related Fatal Crashes to Total Fatal Crashes	31%	25%	50%	44%
Alcohol-Related Injury Crashes	43	49	49	49
Percent of Alcohol-Related Injury Crashes to Total Injury Crashes	6%	6%	6%	6%

Virginia Senate District 16 Speed Crash Statistics

Report Generated March, 2025

	Count	Highest Time Period(s)	Highest Day(s)	Highest Month(s)
Fatal Crashes	4	3:00am - 5:59am	Sunday	June • November
Resulting Fatalities	4	3:00pm - 5:59pm (50%)	(50%)	(50%)
Serious Injury Crashes	16	6:00pm - 8:59pm (25%)	Sunday (44%)	February • January (24%)



Senate District 16 Speed-Related Crashes

Interstate Crashes

- Fatal
- Serious Injury

Non-interstate Crashes

- Fatal
- Serious Injury

The blue gradient represents the density of all speed-related crashes.



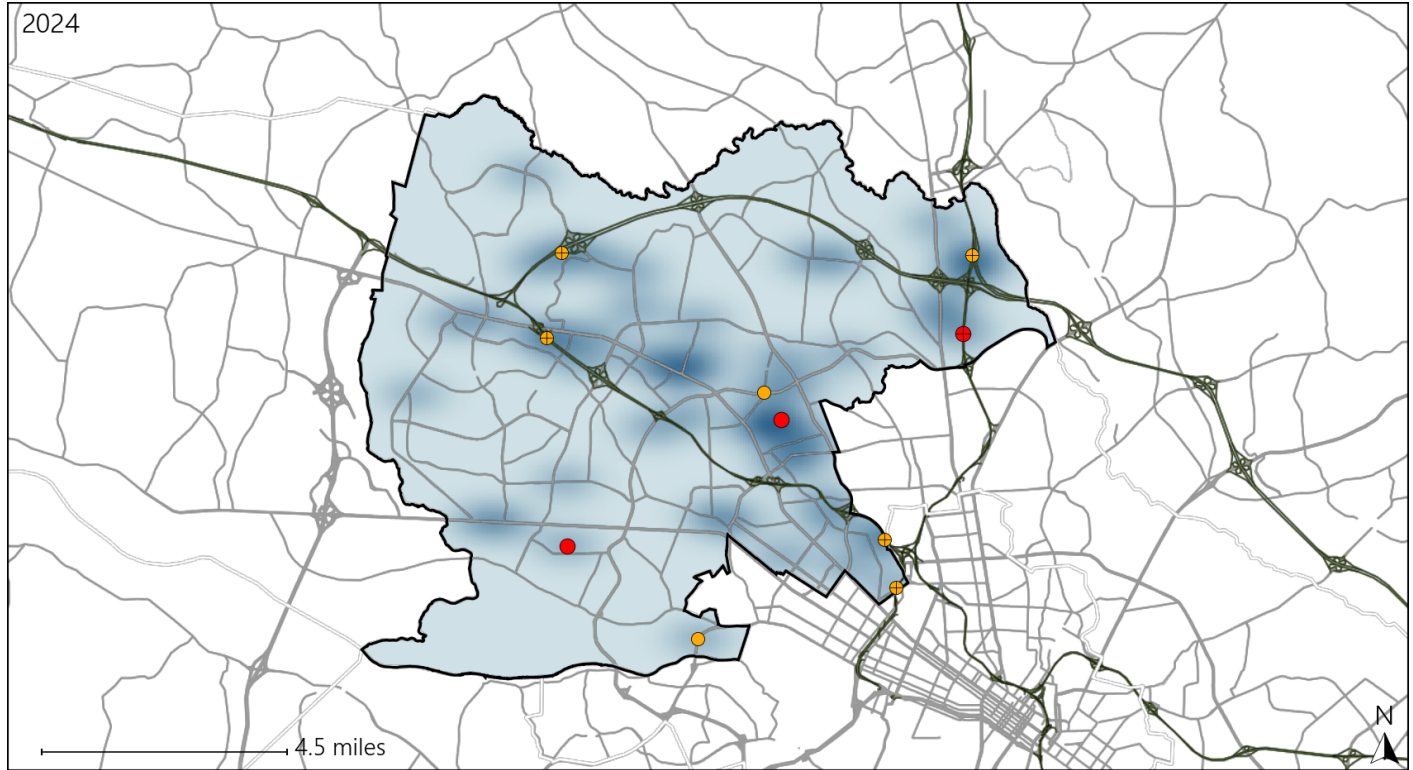
Available Crash Data - Calendar Year (CY)	CY 2021	CY 2022	CY 2023	CY 2024
Total Crashes	2934	3126	3254	3265
Fatal Crashes	16	8	12	18
Injury Crashes	746	811	812	756
Speed-Related Fatal Crashes	4	2	2	4
Percent of Speed-Related Fatal Crashes to Total Fatal Crashes	25%	25%	17%	22%
Speed-Related Injury Crashes	74	72	90	76
Percent of Speed-Related Injury Crashes to Total Injury Crashes	10%	9%	11%	10%

Report of Crashes for January 1st - December 31st, 2024

Virginia Senate District 16 Unrestrained Crash Statistics

Report Generated March, 2025

	Count	Highest Time Period(s)	Highest Day(s)	Highest Month(s)
Fatal Crashes	3	3:00pm - 5:59pm	Sunday	August
Unrestrained Fatalities	3	(67%)	(67%)	(67%)
Serious Injury Crashes	7	Noon - 2:59pm	Tuesday	September
		(43%)	(43%)	(29%)




Senate District 16 Unrestrained-Related Crashes


Interstate Crashes

Non-interstate Crashes

 Fatal

 Fatal

 Serious Injury

 Serious Injury

The blue gradient represents the density of all unrestrained-related crashes.



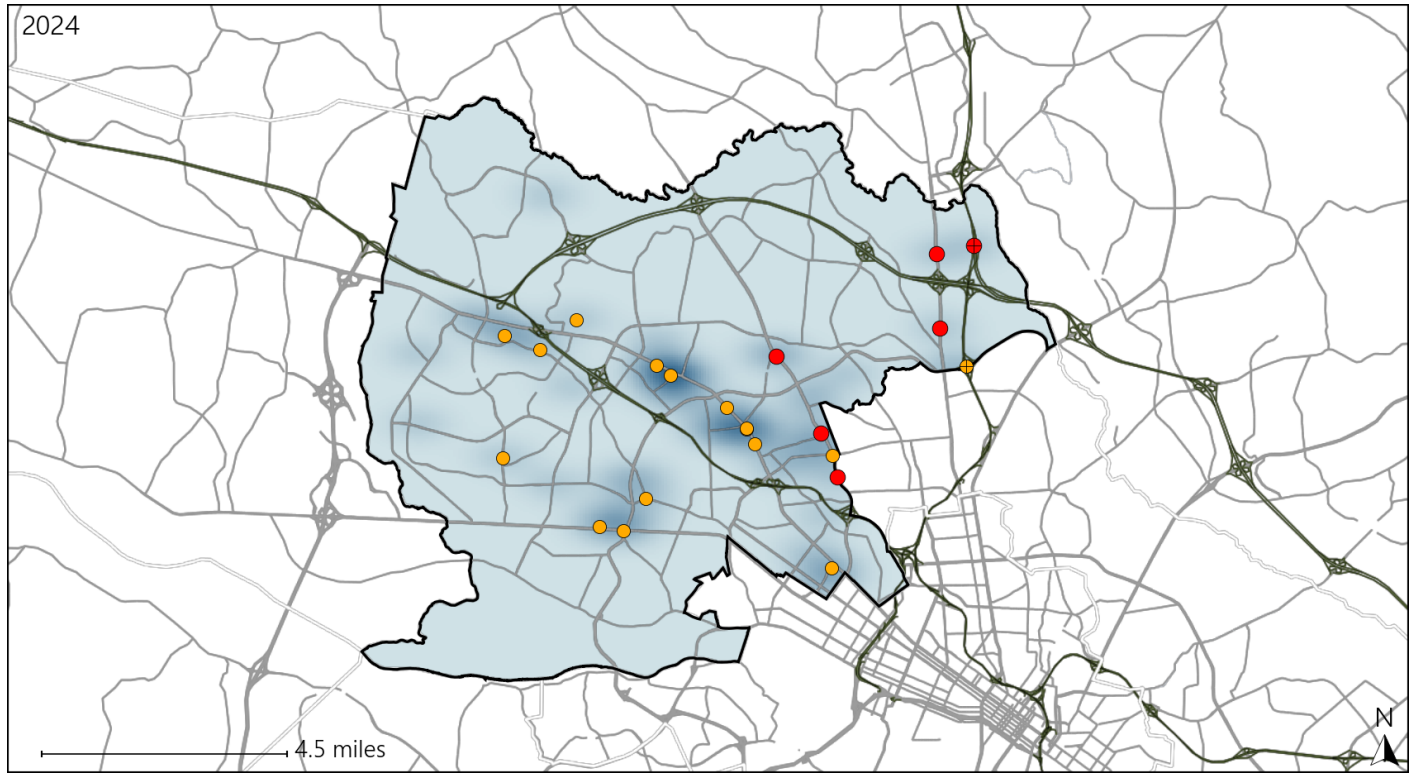
Available Crash Data - Calendar Year (CY)	CY 2021	CY 2022	CY 2023	CY 2024
Total Crashes	2934	3126	3254	3265
Fatalities	16	8	12	18
Injuries	1271	1417	1411	1244
Unrestrained Fatalities	3	2	3	3
Percent of Unrestrained Fatalities to Total Fatalities	19%	25%	25%	17%
Unrestrained Injuries	56	50	59	62
Percent of Unrestrained Injuries to Total Injuries	4%	4%	4%	5%

Report of Crashes for January 1st - December 31st, 2024

Virginia Senate District 16 Pedestrian Crash Statistics

Report Generated March, 2025

	Count	Highest Time Period(s)	Highest Day(s)	Highest Month(s)
Fatal Crashes	6	6:00pm - 8:59pm	Sunday	August • February
Pedestrian Fatalities	6	9:00pm - 11:59pm (66%)	(50%)	(34%)
Serious Injury Crashes	16	6:00pm - 8:59pm	Thursday	December • February
		9:00pm - 11:59pm (50%)	(38%)	(24%)



Senate District 16 Pedestrian-Related Crashes

Interstate Crashes

- Fatal
- Serious Injury

Non-interstate Crashes

- Fatal
- Serious Injury

The blue gradient represents the density of all pedestrian-related crashes.



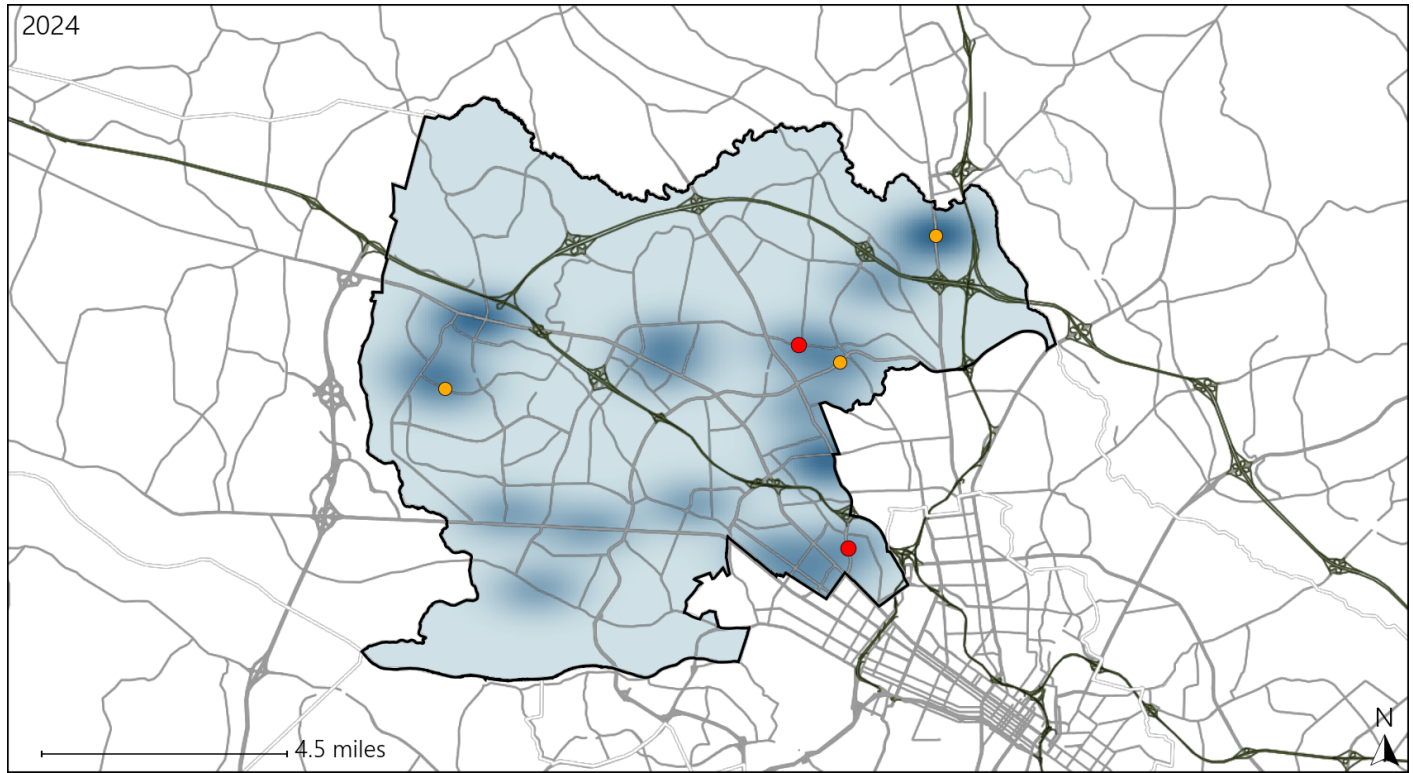
Available Crash Data - Calendar Year (CY)	CY 2021	CY 2022	CY 2023	CY 2024
Total Crashes	2934	3126	3254	3265
Fatal Crashes	16	8	12	18
Injury Crashes	746	811	812	756
Pedestrian-Related Fatal Crashes	7	2	5	6
Percent of Pedestrian-Related Fatal Crashes to Total Fatal Crashes	44%	25%	42%	33%
Pedestrian-Related Injury Crashes	33	39	36	50
Percent of Pedestrian-Related Injury Crashes to Total Injury Crashes	4%	5%	4%	7%

Report of Crashes for January 1st - December 31st, 2024

Virginia Senate District 16 Bicycle Crash Statistics

Report Generated March, 2025

	Count	Highest Time Period(s)	Highest Day(s)	Highest Month(s)
Fatal Crashes	2	3:00pm - 5:59pm	Friday • Sunday	June • November
Bicycle Fatalities	2	9:00pm - 11:59pm (100%)	(100%)	(100%)
Serious Injury Crashes	3	3:00pm - 5:59pm 6:00am - 8:59am (66%)	Tuesday (67%)	April • August (66%)



Senate District 16 Bicycle-Related Crashes

Interstate Crashes

- Fatal
- Serious Injury

Non-interstate Crashes

- Fatal
- Serious Injury

The blue gradient represents the density of all bicycle-related crashes.

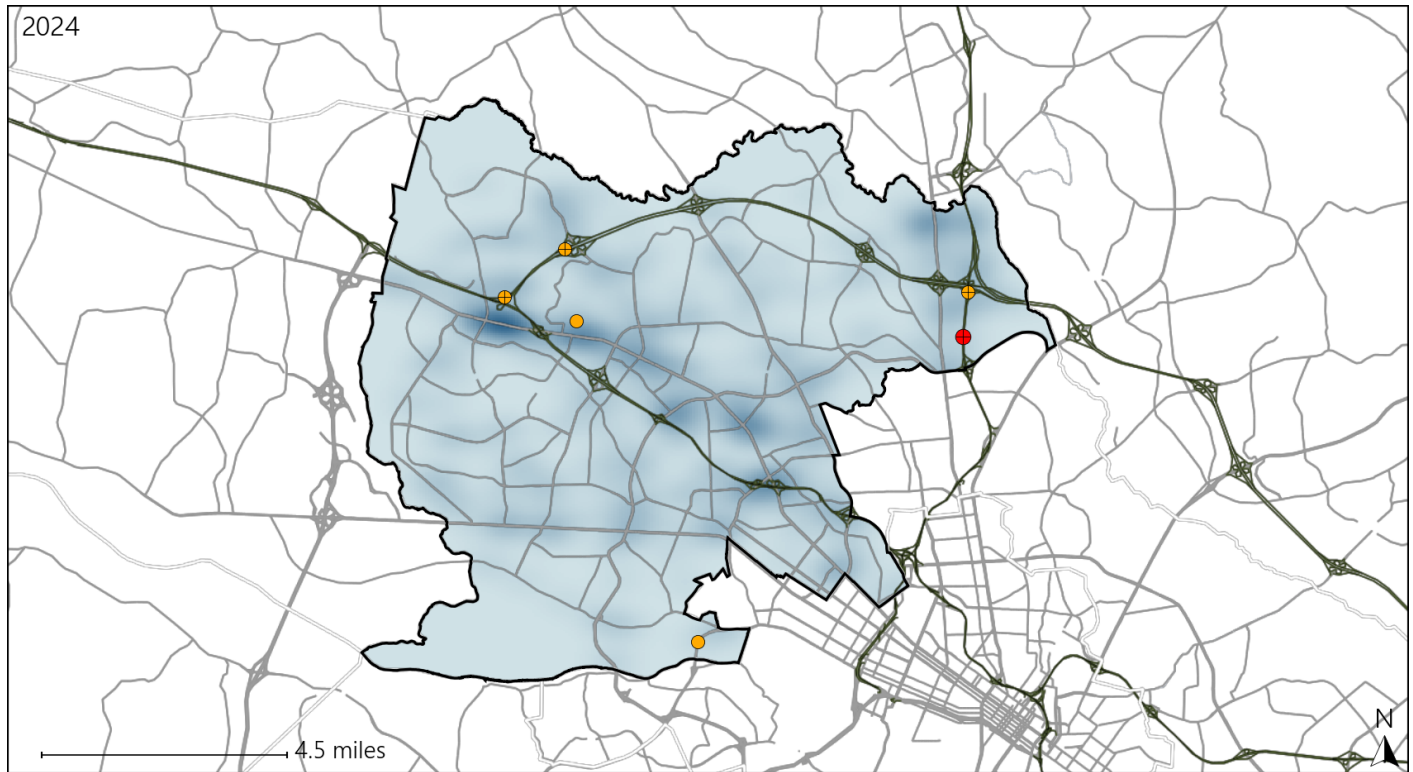


Available Crash Data - Calendar Year (CY)	CY 2021	CY 2022	CY 2023	CY 2024
Total Crashes	2934	3126	3254	3265
Fatal Crashes	16	8	12	18
Injury Crashes	746	811	812	756
Bicycle-Related Fatal Crashes	0	0	0	2
Percent of Bicycle-Related Fatal Crashes to Total Fatal Crashes	0%	0%	0%	11%
Bicycle-Related Injury Crashes	14	12	9	18
Percent of Bicycle-Related Injury Crashes to Total Injury Crashes	2%	1%	1%	2%

Virginia Senate District 16 Distracted Driving Crash Statistics

Report Generated March, 2025

	Count	Highest Time Period(s)	Highest Day(s)	Highest Month(s)
Fatal Crashes	1	Noon - 2:59pm	Sunday	September
Resulting Fatalities	1	(100%)	(100%)	(100%)
Serious Injury Crashes	5	6:00am - 8:59am 6:00pm - 8:59pm	Saturday • Sunday	September
		(40%)	(40%)	(40%)



Senate District 16 Distracted Driving-Related Crashes

Interstate Crashes

Non-interstate Crashes

● Fatal

● Fatal

⊕ Serious Injury

⊕ Serious Injury

The blue gradient represents the density of all distracted driving-related crashes.



Available Crash Data - Calendar Year (CY)	CY 2021	CY 2022	CY 2023	CY 2024
Total Crashes	2934	3126	3254	3265
Fatal Crashes	16	8	12	18
Injury Crashes	746	811	812	756
Distracted Driving-Related Fatal Crashes	2	1	1	1
Percent of Distracted Driving-Related Fatal Crashes to Total Fatal Crashes	13%	13%	8%	6%
Distracted Driving-Related Injury Crashes	122	121	103	101
Percent of Distracted Driving-Related Injury Crashes to Total Injury Crashes	16%	15%	13%	13%