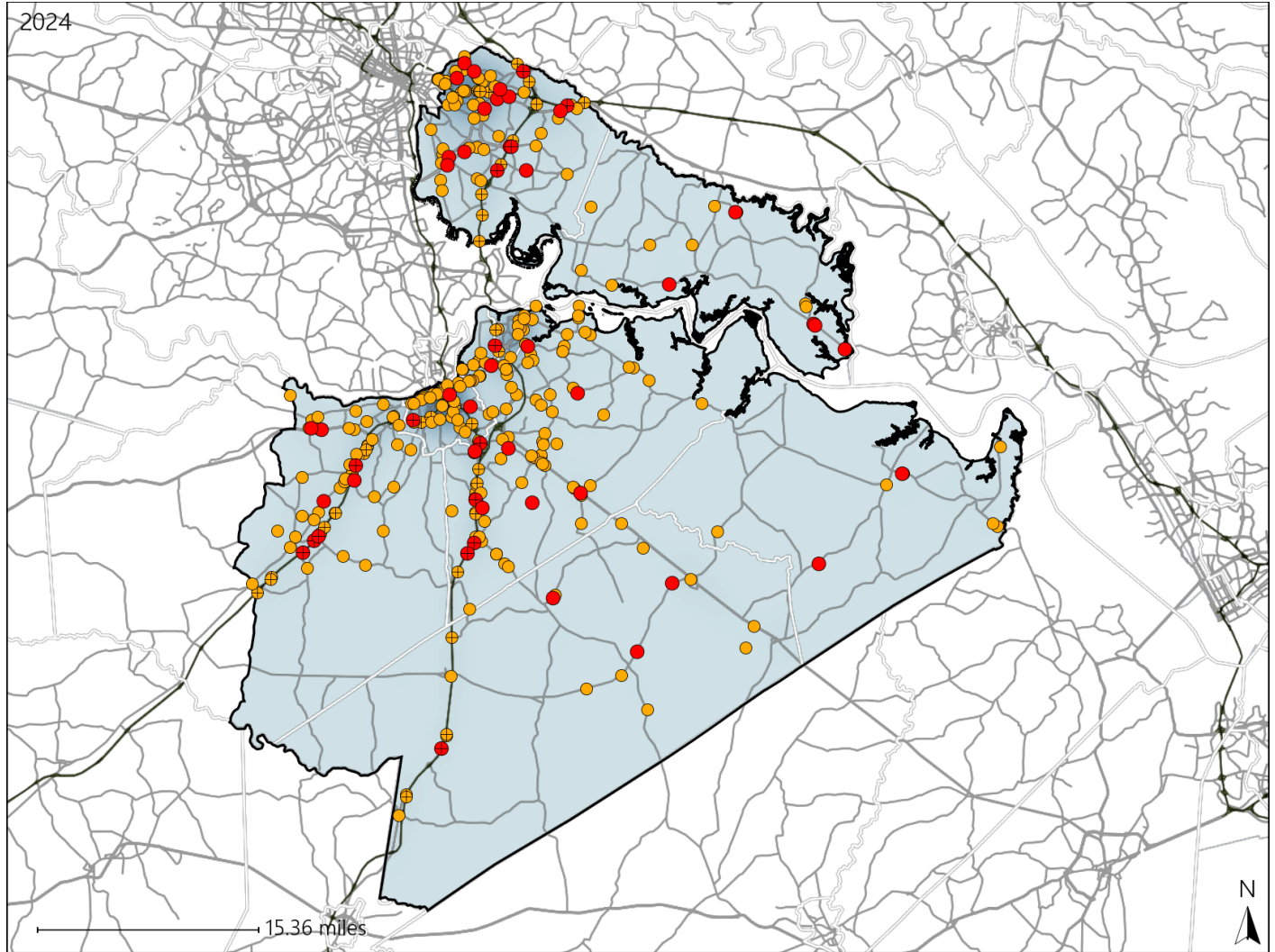


# Virginia Senate District 13 Crash Statistics

Report Generated March, 2025

	Count	Highest Time Period(s)	Highest Day(s)	Highest Month(s)
<b>Fatal Crashes</b>	<b>52</b>	<b>3:00pm - 5:59pm</b>	<b>Monday</b>	<b>July</b>
<b>Resulting Fatalities</b>	<b>54</b>	<b>(15%)</b>	<b>(21%)</b>	<b>(17%)</b>
<b>Serious Injury Crashes</b>	<b>289</b>	<b>3:00pm - 5:59pm</b>	<b>Sunday</b>	<b>April • May</b>
		<b>(19%)</b>	<b>(17%)</b>	<b>(22%)</b>



### Senate District 13 Crashes

Interstate Crashes

- Fatal
- Serious Injury

Non-interstate Crashes

- Fatal
- Serious Injury

The blue gradient represents the density of all crashes.

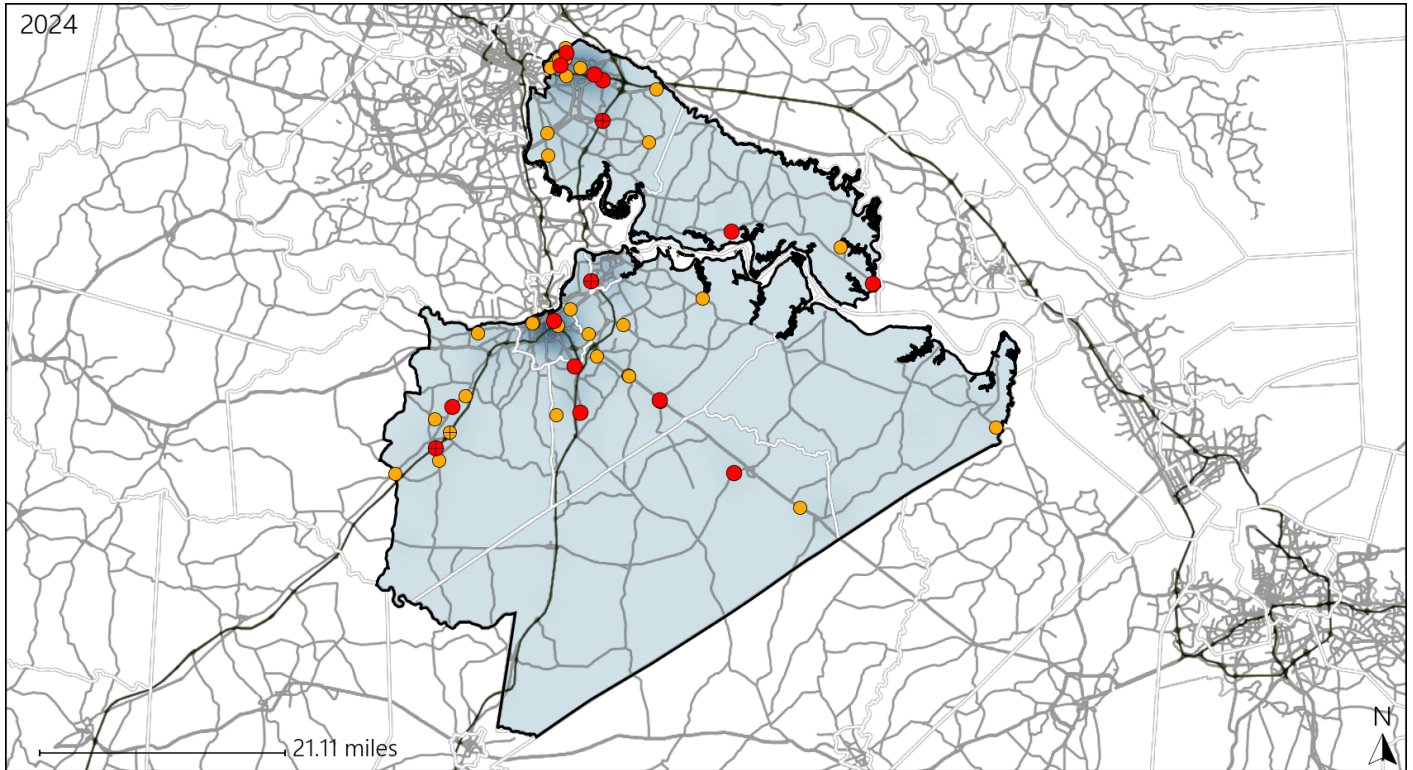


Available Crash Data - Calendar Year (CY)	CY 2021	CY 2022	CY 2023	CY 2024
Total Crashes	4080	4206	4041	4139
Fatal Crashes	43	44	43	52
Injury Crashes	1442	1554	1534	1454

# Virginia Senate District 13 Alcohol Crash Statistics

Report Generated March, 2025

	Count	Highest Time Period(s)	Highest Day(s)	Highest Month(s)
<b>Fatal Crashes</b>	<b>15</b>	3:00pm - 5:59pm	Saturday	July
<b>Resulting Fatalities</b>	<b>16</b>	Midnight - 2:59am (54%)	(27%)	(27%)
<b>Serious Injury Crashes</b>	<b>32</b>	Midnight - 2:59am (31%)	Sunday (34%)	June (19%)



### Senate District 13 Alcohol-Related Crashes

Interstate Crashes                      Non-interstate Crashes  
 ● Fatal                                      ● Fatal  
 ● Serious Injury                          ● Serious Injury

The blue gradient represents the density of all alcohol-related crashes.

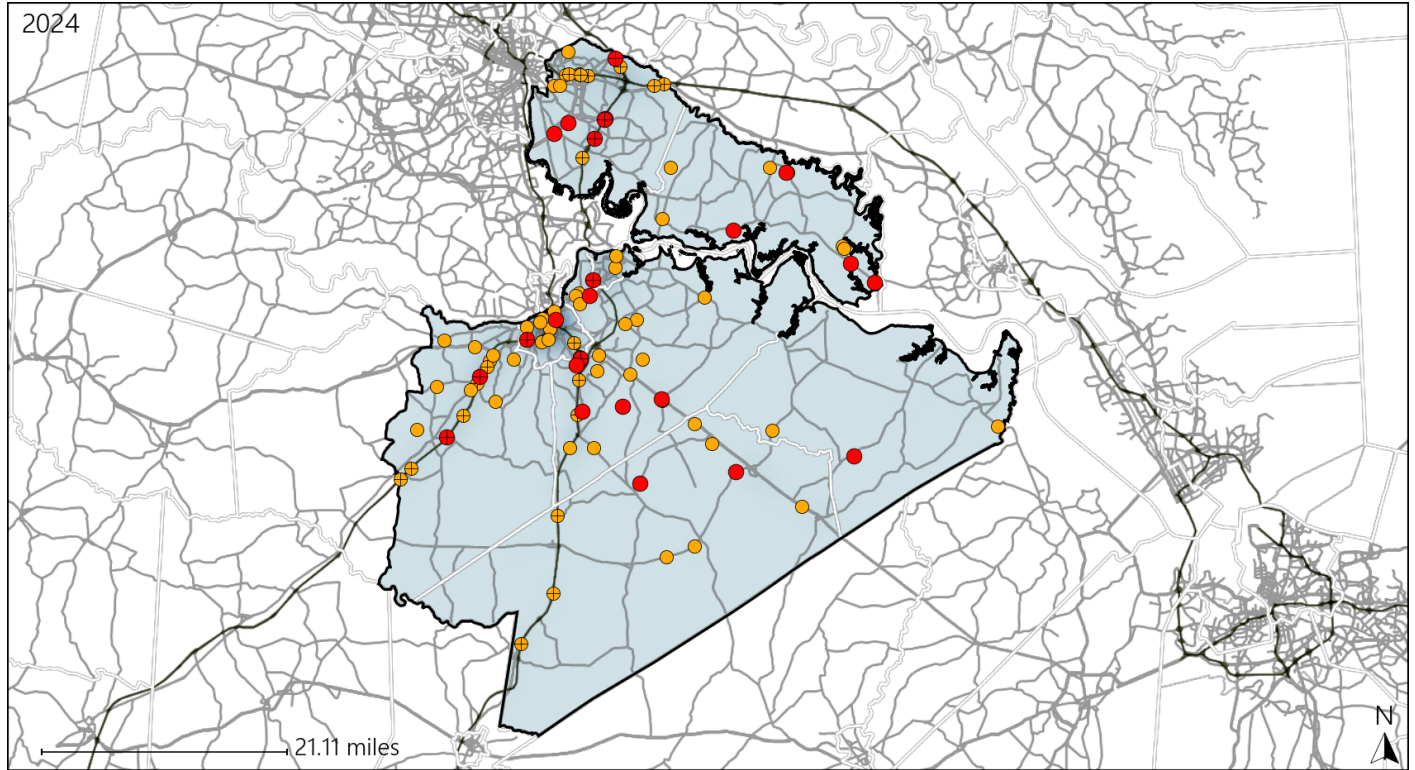


Available Crash Data - Calendar Year (CY)	CY 2021	CY 2022	CY 2023	CY 2024
Total Crashes	4080	4206	4041	4139
Fatal Crashes	43	44	43	52
Injury Crashes	1442	1554	1534	1454
Alcohol-Related Fatal Crashes	11	16	16	15
Percent of Alcohol-Related Fatal Crashes to Total Fatal Crashes	26%	36%	37%	29%
Alcohol-Related Injury Crashes	122	103	112	90
Percent of Alcohol-Related Injury Crashes to Total Injury Crashes	8%	7%	7%	6%

# Virginia Senate District 13 Speed Crash Statistics

Report Generated March, 2025

	Count	Highest Time Period(s)	Highest Day(s)	Highest Month(s)
<b>Fatal Crashes</b>	<b>24</b>	<b>3:00pm - 5:59pm</b>	<b>Thursday</b>	<b>July</b>
<b>Resulting Fatalities</b>	<b>25</b>	(29%)	(33%)	(21%)
<b>Serious Injury Crashes</b>	<b>72</b>	<b>6:00pm - 8:59pm</b>	<b>Saturday</b>	<b>July</b>
		(21%)	(19%)	(14%)



### Senate District 13 Speed-Related Crashes

Interstate Crashes                      Non-interstate Crashes  
 ● Fatal                                      ● Fatal  
 ⊕ Serious Injury                          ⊕ Serious Injury

The blue gradient represents the density of all speed-related crashes.



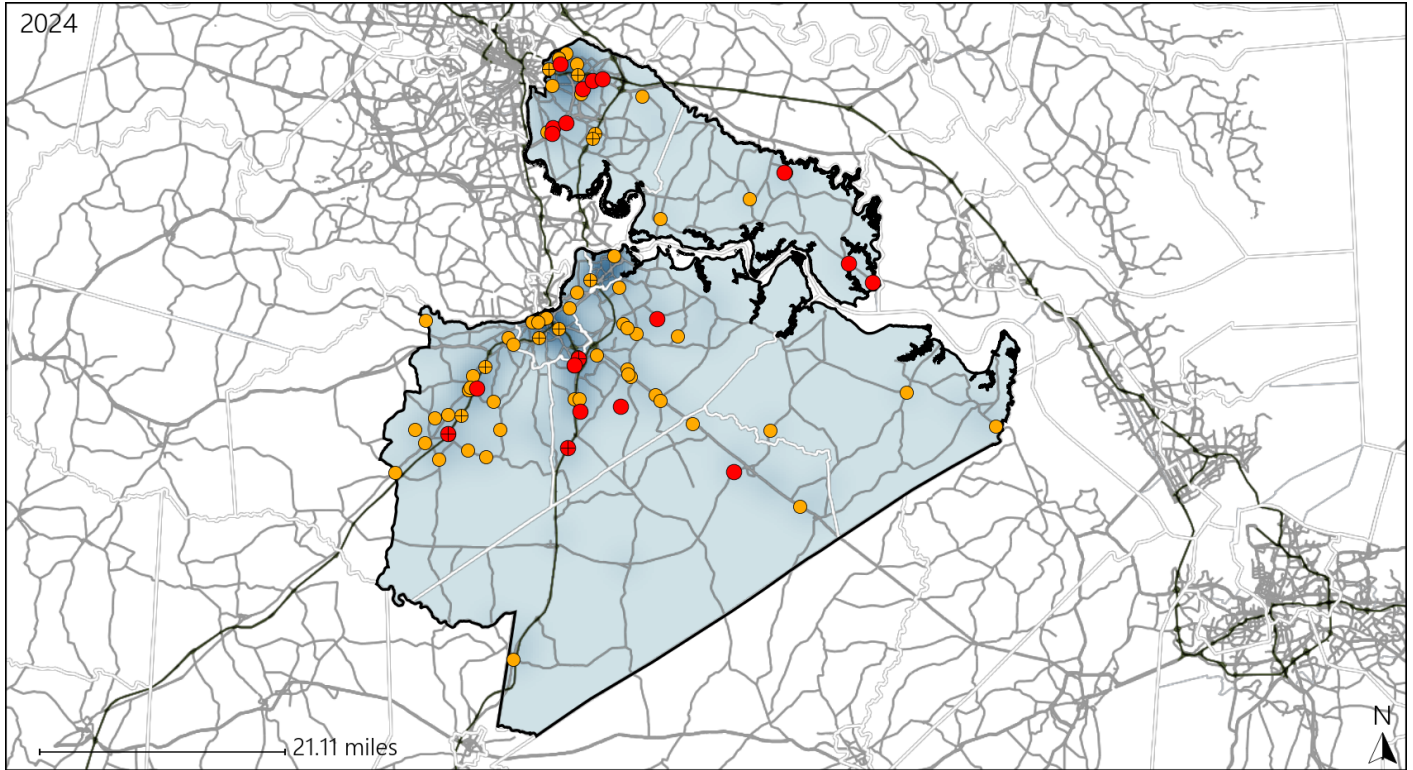
Available Crash Data - Calendar Year (CY)	CY 2021	CY 2022	CY 2023	CY 2024
Total Crashes	4080	4206	4041	4139
Fatal Crashes	43	44	43	52
Injury Crashes	1442	1554	1534	1454
Speed-Related Fatal Crashes	16	18	26	24
Percent of Speed-Related Fatal Crashes to Total Fatal Crashes	37%	41%	60%	46%
Speed-Related Injury Crashes	293	290	288	244
Percent of Speed-Related Injury Crashes to Total Injury Crashes	20%	19%	19%	17%



# Virginia Senate District 13 Unrestrained Crash Statistics

Report Generated March, 2025

	Count	Highest Time Period(s)	Highest Day(s)	Highest Month(s)
<b>Fatal Crashes</b>	<b>19</b>	<b>6:00pm - 8:59pm</b>	<b>Thursday</b>	<b>July</b>
<b>Unrestrained Fatalities</b>	<b>19</b>	(21%)	(26%)	(16%)
<b>Serious Injury Crashes</b>	<b>69</b>	<b>Noon - 2:59pm</b>	<b>Tuesday</b>	<b>September</b>
		(16%)	(20%)	(13%)



### Senate District 13 Unrestrained-Related Crashes

Interstate Crashes

- Fatal
- Serious Injury

Non-interstate Crashes

- Fatal
- Serious Injury

The blue gradient represents the density of all unrestrained-related crashes.

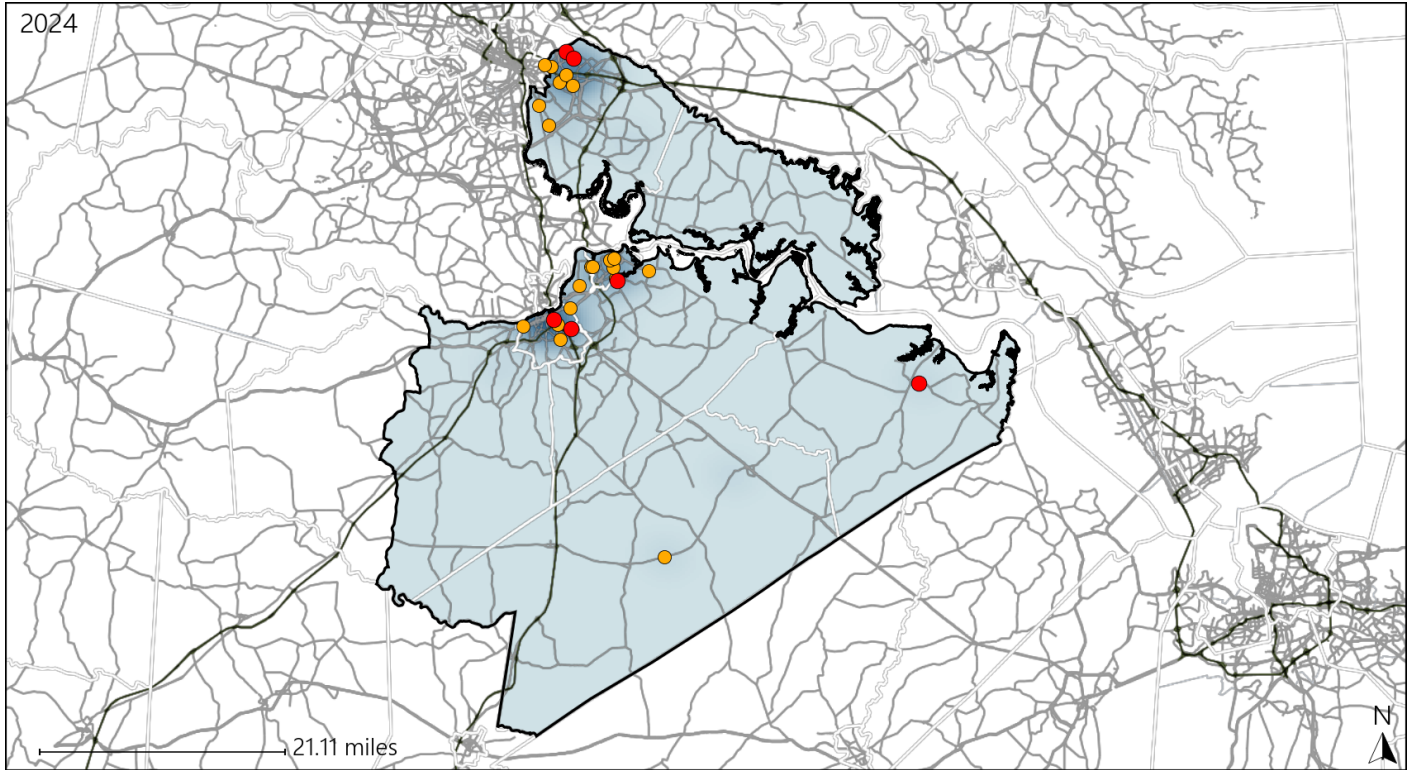


Available Crash Data - Calendar Year (CY)	CY 2021	CY 2022	CY 2023	CY 2024
<b>Total Crashes</b>	<b>4080</b>	<b>4206</b>	<b>4041</b>	<b>4139</b>
<b>Fatalities</b>	<b>46</b>	<b>47</b>	<b>47</b>	<b>54</b>
<b>Injuries</b>	<b>2465</b>	<b>2661</b>	<b>2602</b>	<b>2523</b>
<b>Unrestrained Fatalities</b>	<b>15</b>	<b>19</b>	<b>21</b>	<b>19</b>
<b>Percent of Unrestrained Fatalities to Total Fatalities</b>	<b>33%</b>	<b>40%</b>	<b>45%</b>	<b>35%</b>
<b>Unrestrained Injuries</b>	<b>195</b>	<b>200</b>	<b>249</b>	<b>189</b>
<b>Percent of Unrestrained Injuries to Total Injuries</b>	<b>8%</b>	<b>8%</b>	<b>10%</b>	<b>7%</b>

# Virginia Senate District 13 Pedestrian Crash Statistics

Report Generated March, 2025

	Count	Highest Time Period(s)	Highest Day(s)	Highest Month(s)
<b>Fatal Crashes</b>	<b>6</b>	<b>6:00pm - 8:59pm</b>	<b>Wednesday</b>	<b>July</b>
<b>Pedestrian Fatalities</b>	<b>6</b>	(33%)	(33%)	(50%)
<b>Serious Injury Crashes</b>	<b>20</b>	<b>6:00pm - 8:59pm</b>	<b>Tuesday</b>	<b>August • June</b>
		(30%)	(30%)	(30%)



### Senate District 13 Pedestrian-Related Crashes

- |                    |                        |
|--------------------|------------------------|
| Interstate Crashes | Non-interstate Crashes |
| Fatal              | Fatal                  |
| Serious Injury     | Serious Injury         |

The blue gradient represents the density of all pedestrian-related crashes.

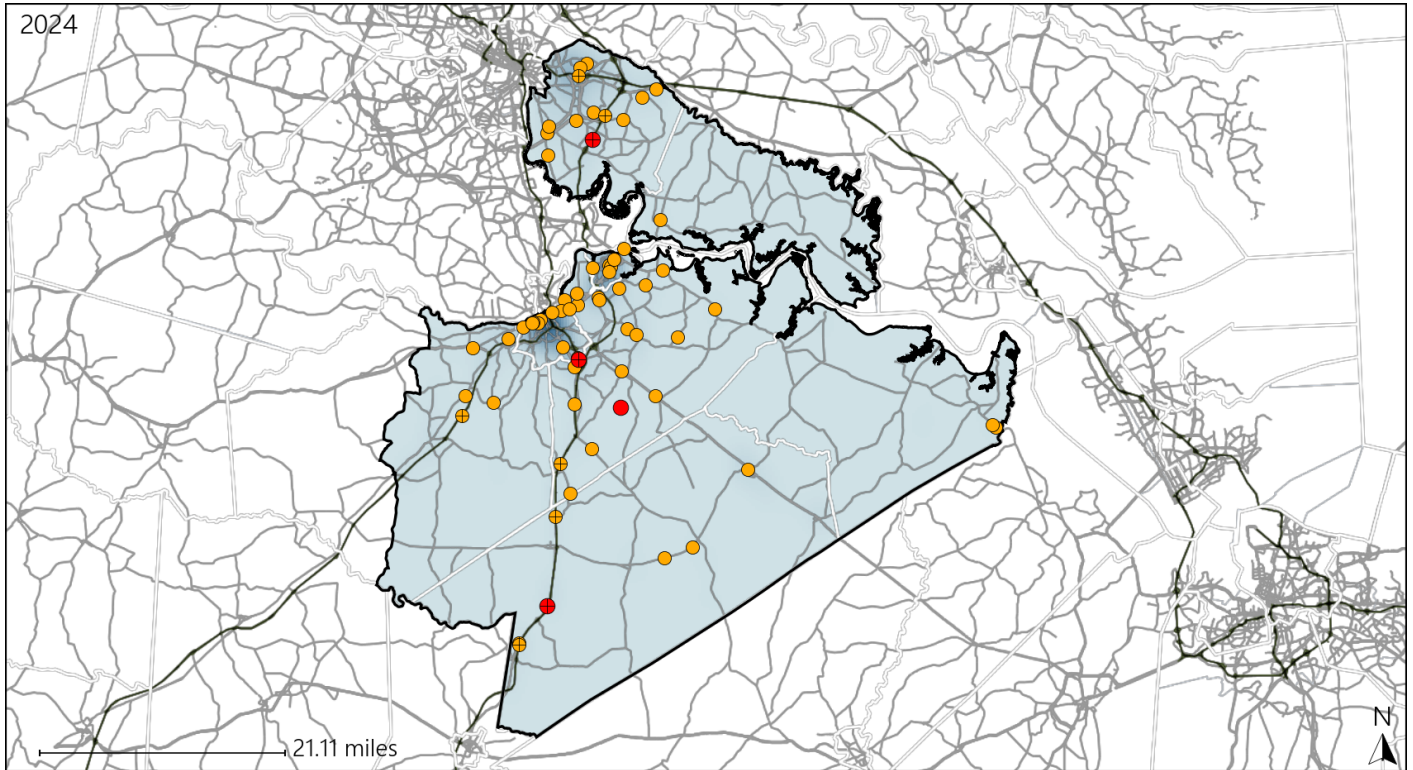


Available Crash Data - Calendar Year (CY)	CY 2021	CY 2022	CY 2023	CY 2024
Total Crashes	4080	4206	4041	4139
Fatal Crashes	43	44	43	52
Injury Crashes	1442	1554	1534	1454
Pedestrian-Related Fatal Crashes	5	5	2	6
Percent of Pedestrian-Related Fatal Crashes to Total Fatal Crashes	12%	11%	5%	12%
Pedestrian-Related Injury Crashes	49	39	43	49
Percent of Pedestrian-Related Injury Crashes to Total Injury Crashes	3%	3%	3%	3%

# Virginia Senate District 13 Distracted Driving Crash Statistics

Report Generated March, 2025

	Count	Highest Time Period(s)	Highest Day(s)	Highest Month(s)
<b>Fatal Crashes</b>	<b>4</b>	<b>6:00pm - 8:59pm</b>	<b>Friday • Monday</b>	<b>September</b>
<b>Resulting Fatalities</b>	<b>4</b>	<b>9:00am - 11:59am</b> (50%)	<b>(50%)</b>	<b>(50%)</b>
<b>Serious Injury Crashes</b>	<b>61</b>	<b>3:00pm - 5:59pm</b> (23%)	<b>Sunday</b> (28%)	<b>May</b> (13%)



## Senate District 13 Distracted Driving-Related Crashes

Interstate Crashes

- Fatal
- Serious Injury

Non-interstate Crashes

- Fatal
- Serious Injury

The blue gradient represents the density of all distracted driving-related crashes.



Available Crash Data - Calendar Year (CY)	CY 2021	CY 2022	CY 2023	CY 2024
Total Crashes	4080	4206	4041	4139
Fatal Crashes	43	44	43	52
Injury Crashes	1442	1554	1534	1454
Distracted Driving-Related Fatal Crashes	4	7	4	4
Percent of Distracted Driving-Related Fatal Crashes to Total Fatal Crashes	9%	16%	9%	8%
Distracted Driving-Related Injury Crashes	282	282	339	292
Percent of Distracted Driving-Related Injury Crashes to Total Injury Crashes	20%	18%	22%	20%