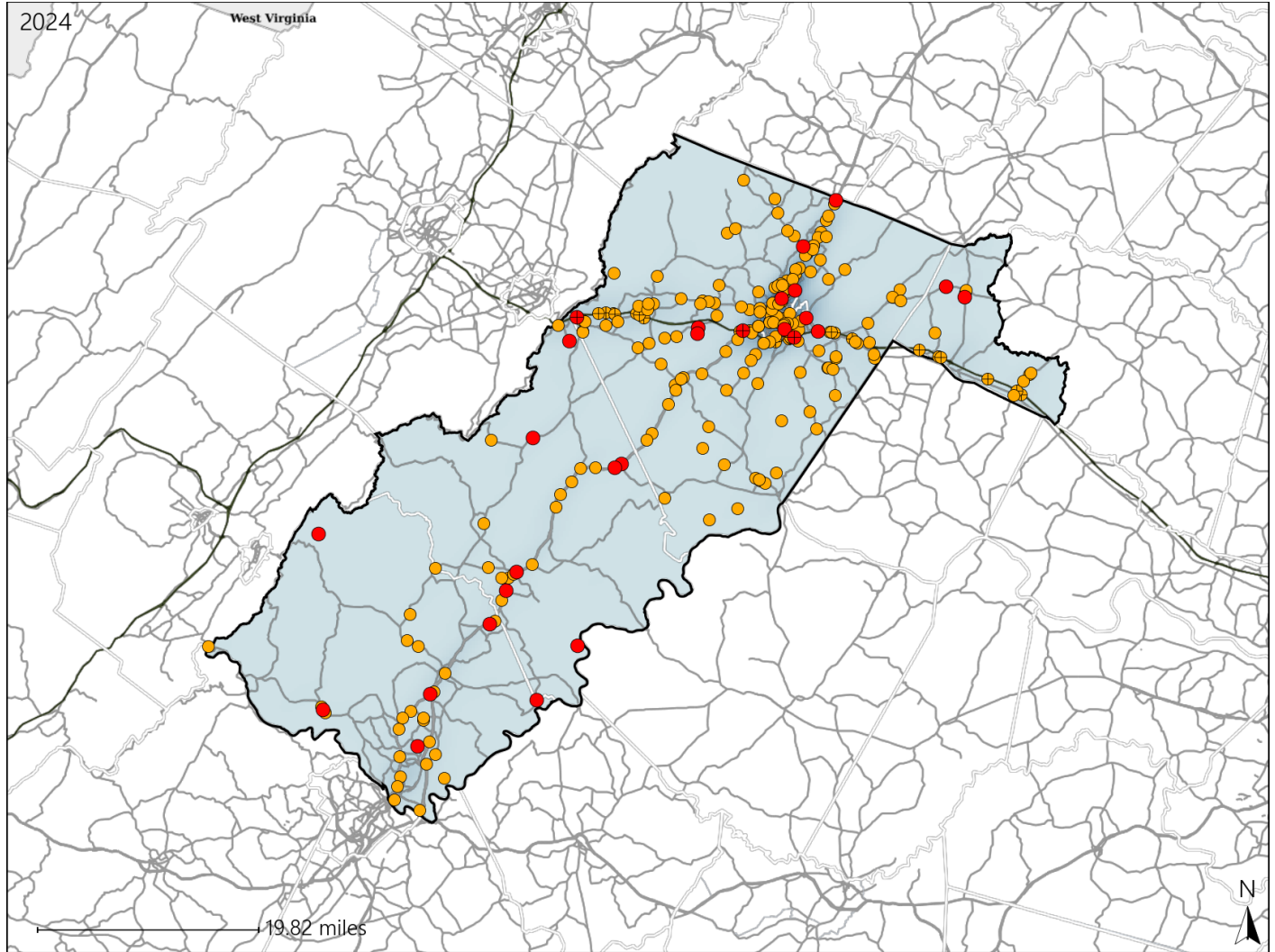


# Virginia Senate District 11 Crash Statistics

Report Generated March, 2025

	Count	Highest Time Period(s)	Highest Day(s)	Highest Month(s)
<b>Fatal Crashes</b>	<b>27</b>	6:00pm - 8:59pm	Thursday	August
<b>Resulting Fatalities</b>	<b>29</b>	(44%)	(30%)	(30%)
<b>Serious Injury Crashes</b>	<b>236</b>	3:00pm - 5:59pm	Saturday	April
		(23%)	(17%)	(12%)



## Senate District 11 Crashes

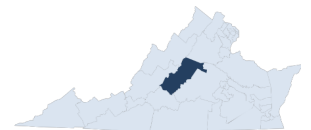
Interstate Crashes

- Fatal
- Serious Injury

Non-interstate Crashes

- Fatal
- Serious Injury

The blue gradient represents the density of all crashes.

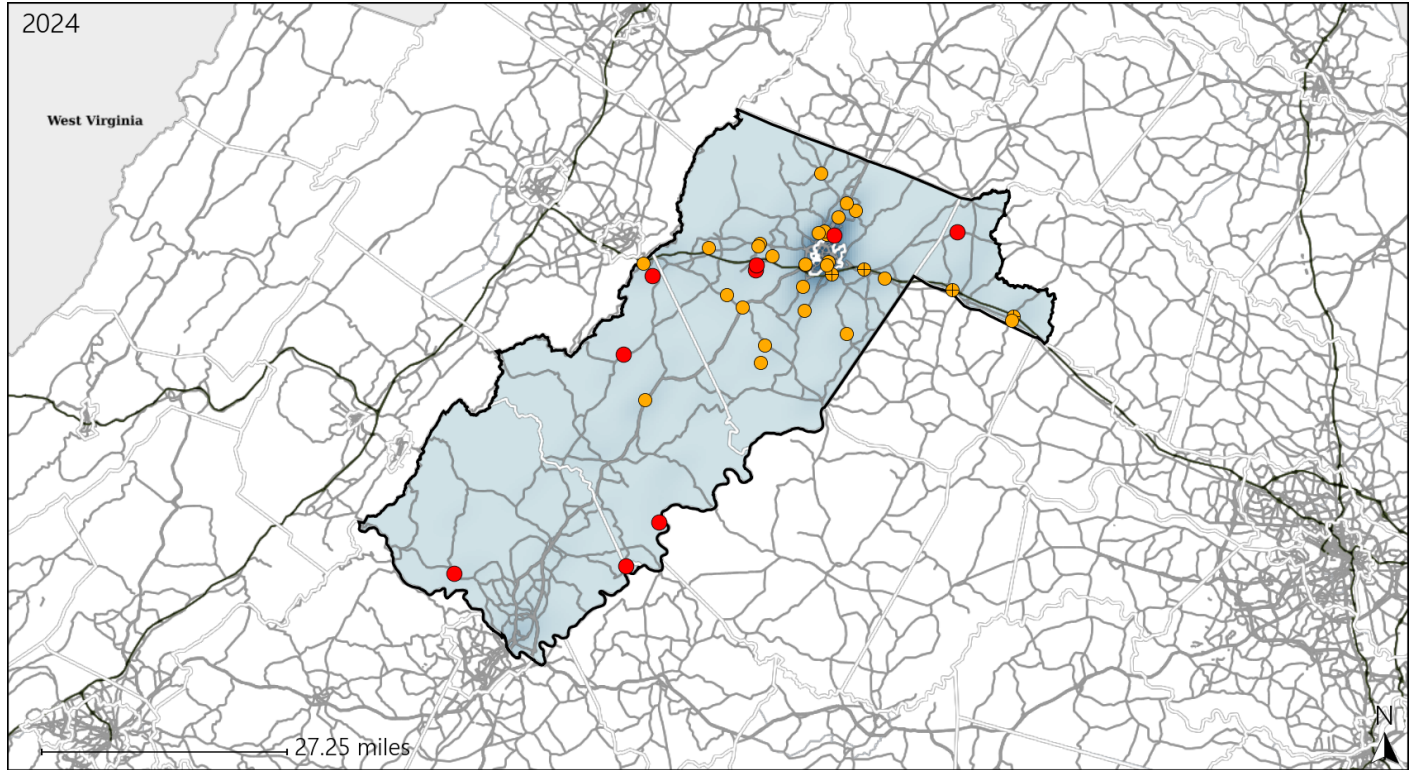


Available Crash Data - Calendar Year (CY)	CY 2021	CY 2022	CY 2023	CY 2024
Total Crashes	3318	3608	3655	3855
Fatal Crashes	37	28	29	27
Injury Crashes	1378	1620	1685	1701

# Virginia Senate District 11 Alcohol Crash Statistics

Report Generated March, 2025

	Count	Highest Time Period(s)	Highest Day(s)	Highest Month(s)
<b>Fatal Crashes</b>	<b>9</b>	<b>6:00pm - 8:59pm</b>	<b>Sunday</b>	<b>July - June</b>
<b>Resulting Fatalities</b>	<b>9</b>	<b>(56%)</b>	<b>(44%)</b>	<b>(44%)</b>
<b>Serious Injury Crashes</b>	<b>30</b>	<b>9:00pm - 11:59pm</b>	<b>Saturday</b>	<b>September</b>
		<b>(33%)</b>	<b>(40%)</b>	<b>(20%)</b>



## Senate District 11 Alcohol-Related Crashes

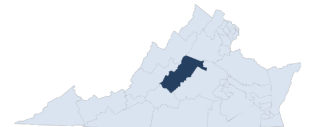
Interstate Crashes

Non-interstate Crashes

- Fatal
- Serious Injury

- Fatal
- Serious Injury

The blue gradient represents the density of all alcohol-related crashes.



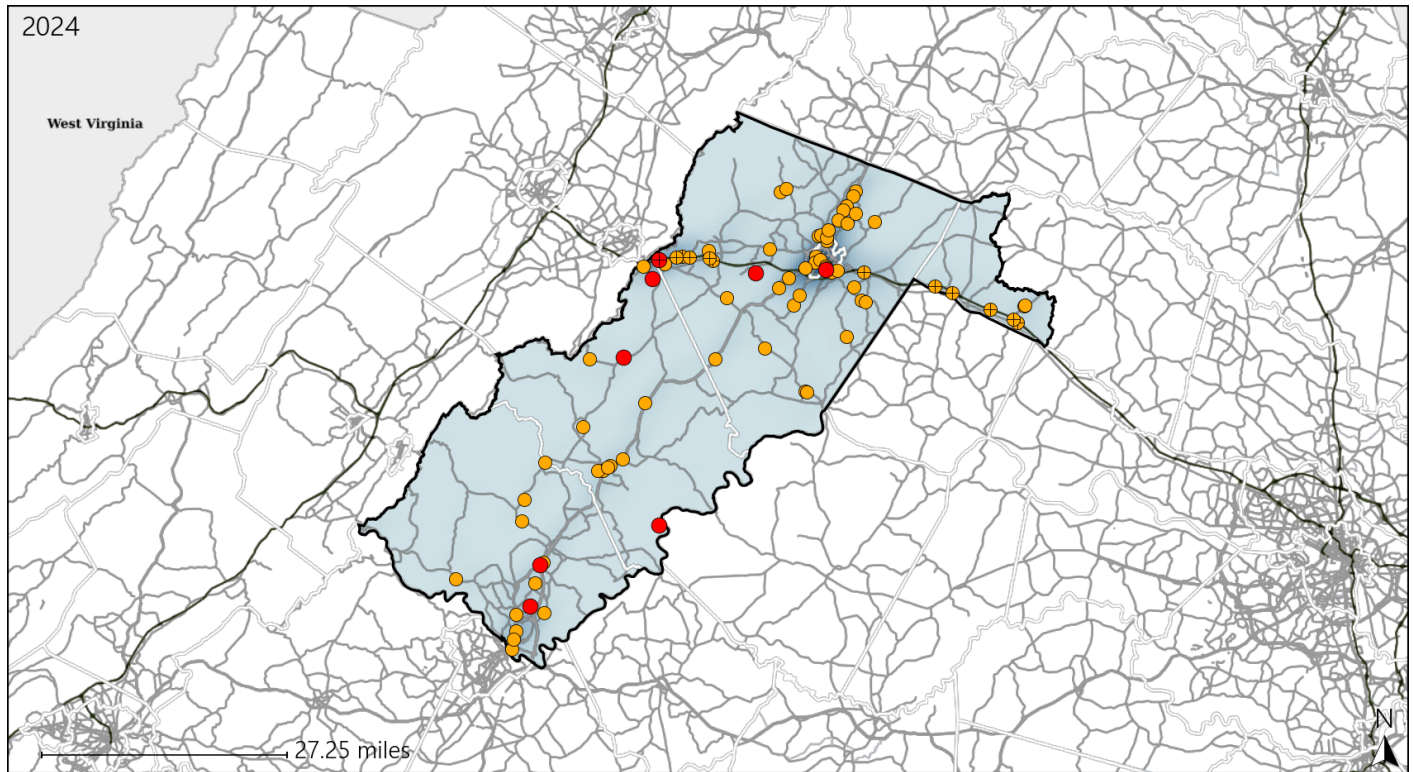
Available Crash Data - Calendar Year (CY)	CY 2021	CY 2022	CY 2023	CY 2024
Total Crashes	3318	3608	3655	3855
Fatal Crashes	37	28	29	27
Injury Crashes	1378	1620	1685	1701
Alcohol-Related Fatal Crashes	6	15	9	9
Percent of Alcohol-Related Fatal Crashes to Total Fatal Crashes	16%	54%	31%	33%
Alcohol-Related Injury Crashes	97	101	135	109
Percent of Alcohol-Related Injury Crashes to Total Injury Crashes	7%	6%	8%	6%

Report of Crashes for January 1<sup>st</sup> - December 31<sup>st</sup>, 2024

# Virginia Senate District 11 Speed Crash Statistics

Report Generated March, 2025

	Count	Highest Time Period(s)	Highest Day(s)	Highest Month(s)
<b>Fatal Crashes</b>	<b>8</b>	<b>6:00pm - 8:59pm</b>	<b>Sunday • Thursday</b>	<b>July • October</b>
<b>Resulting Fatalities</b>	<b>8</b>	<b>(50%)</b>	<b>(76%)</b>	<b>(50%)</b>
<b>Serious Injury Crashes</b>	<b>74</b>	<b>3:00pm - 5:59pm</b> <b>9:00pm - 11:59pm</b>	<b>Saturday</b>	<b>April</b>
		<b>(46%)</b>	<b>(23%)</b>	<b>(19%)</b>



## Senate District 11 Speed-Related Crashes

Interstate Crashes

Non-interstate Crashes

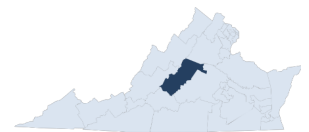
● Fatal

● Fatal

⊕ Serious Injury

⊕ Serious Injury

The blue gradient represents the density of all speed-related crashes.



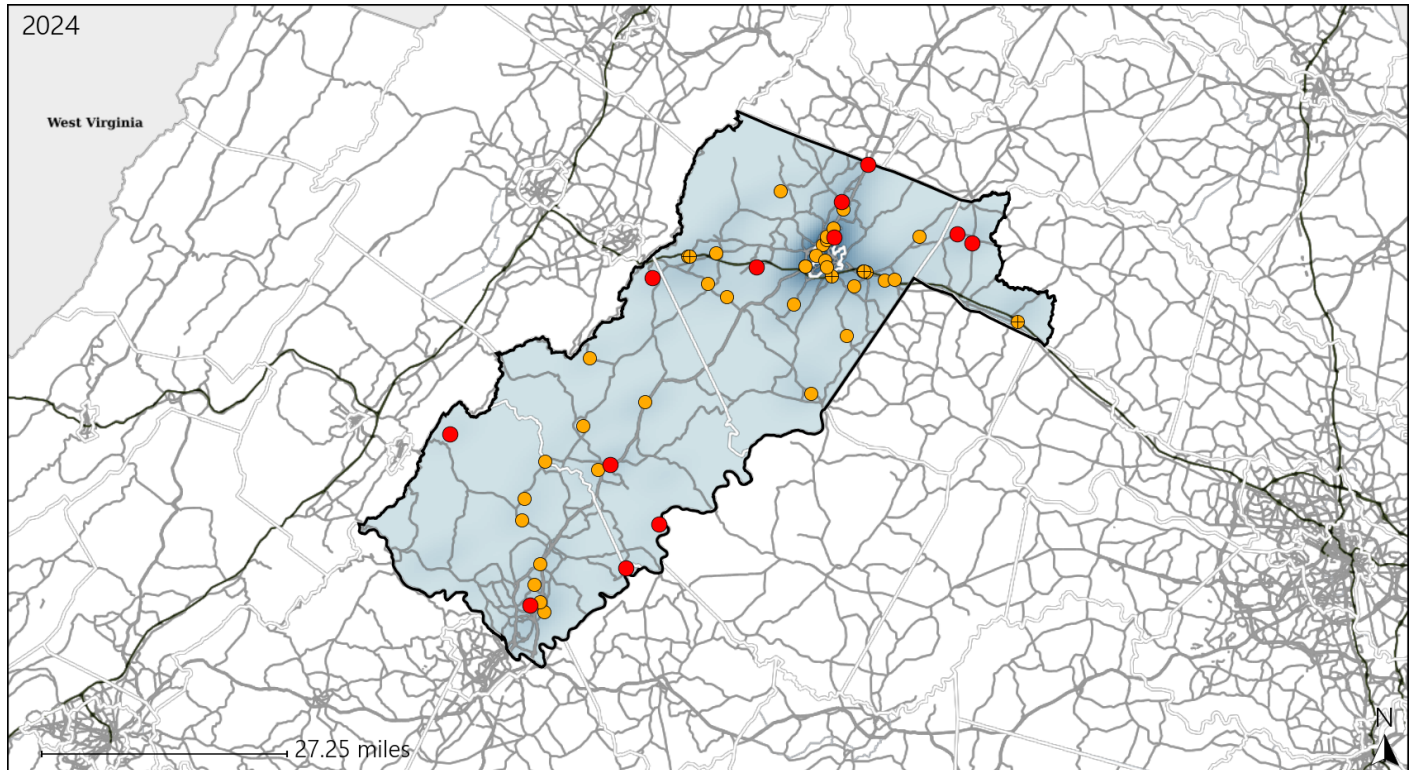
Available Crash Data - Calendar Year (CY)	CY 2021	CY 2022	CY 2023	CY 2024
Total Crashes	3318	3608	3655	3855
Fatal Crashes	37	28	29	27
Injury Crashes	1378	1620	1685	1701
Speed-Related Fatal Crashes	8	9	13	8
Percent of Speed-Related Fatal Crashes to Total Fatal Crashes	22%	32%	45%	30%
Speed-Related Injury Crashes	268	294	321	295
Percent of Speed-Related Injury Crashes to Total Injury Crashes	19%	18%	19%	17%



# Virginia Senate District 11 Unrestrained Crash Statistics

Report Generated March, 2025

	Count	Highest Time Period(s)	Highest Day(s)	Highest Month(s)
<b>Fatal Crashes</b>	<b>12</b>	<b>6:00pm - 8:59pm</b>	<b>Sunday</b>	<b>August</b>
<b>Unrestrained Fatalities</b>	<b>12</b>	<b>(42%)</b>	<b>(33%)</b>	<b>(25%)</b>
<b>Serious Injury Crashes</b>	<b>40</b>	<b>6:00pm - 8:59pm</b>	<b>Saturday</b>	<b>September</b>
		<b>(22%)</b>	<b>(22%)</b>	<b>(18%)</b>



## Senate District 11 Unrestrained-Related Crashes

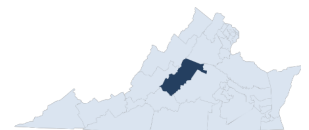
Interstate Crashes

Non-interstate Crashes

- Fatal
- Serious Injury

- Fatal
- Serious Injury

The blue gradient represents the density of all unrestrained-related crashes.

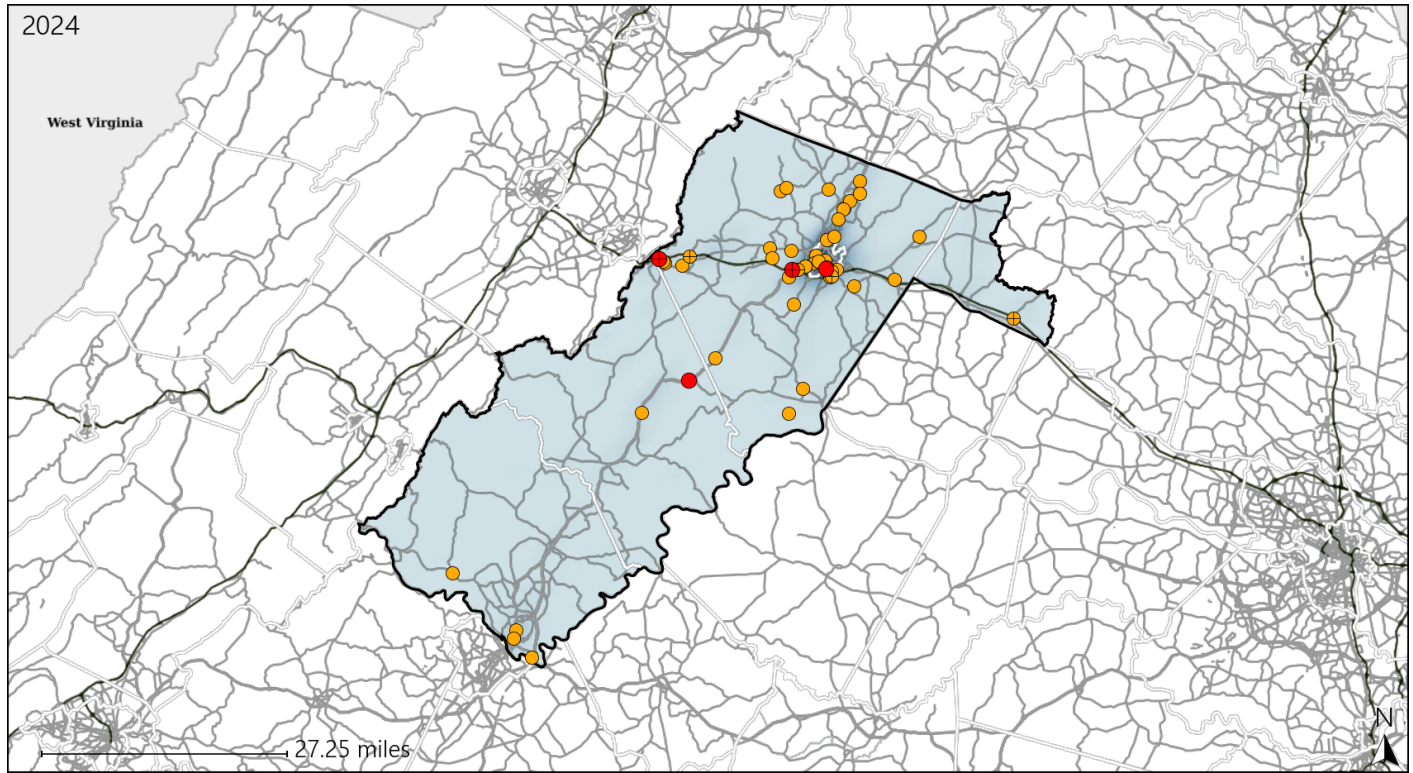


Available Crash Data - Calendar Year (CY)	CY 2021	CY 2022	CY 2023	CY 2024
Total Crashes	3318	3608	3655	3855
Fatalities	39	29	30	29
Injuries	2049	2504	2554	2706
Unrestrained Fatalities	15	13	15	12
Percent of Unrestrained Fatalities to Total Fatalities	38%	45%	50%	41%
Unrestrained Injuries	131	131	135	121
Percent of Unrestrained Injuries to Total Injuries	6%	5%	5%	4%

# Virginia Senate District 11 Distracted Driving Crash Statistics

Report Generated March, 2025

	Count	Highest Time Period(s)	Highest Day(s)	Highest Month(s)
<b>Fatal Crashes</b>	<b>4</b>	3:00am - 5:59am	Thursday	August
<b>Resulting Fatalities</b>	<b>4</b>	6:00pm - 8:59pm (50%)	(50%)	(50%)
<b>Serious Injury Crashes</b>	<b>46</b>	9:00am - 11:59am 9:00pm - 11:59pm (34%)	Saturday (24%)	April • October (26%)



## Senate District 11 Distracted Driving-Related Crashes

Interstate Crashes

Non-interstate Crashes

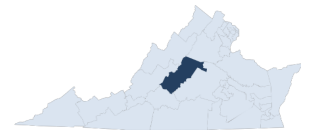
● Fatal

● Fatal

⊕ Serious Injury

⊕ Serious Injury

The blue gradient represents the density of all distracted driving-related crashes.



Available Crash Data - Calendar Year (CY)	CY 2021	CY 2022	CY 2023	CY 2024
Total Crashes	3318	3608	3655	3855
Fatal Crashes	37	28	29	27
Injury Crashes	1378	1620	1685	1701
Distracted Driving-Related Fatal Crashes	4	5	0	4
Percent of Distracted Driving-Related Fatal Crashes to Total Fatal Crashes	11%	18%	0%	15%
Distracted Driving-Related Injury Crashes	236	270	309	269
Percent of Distracted Driving-Related Injury Crashes to Total Injury Crashes	17%	17%	18%	16%