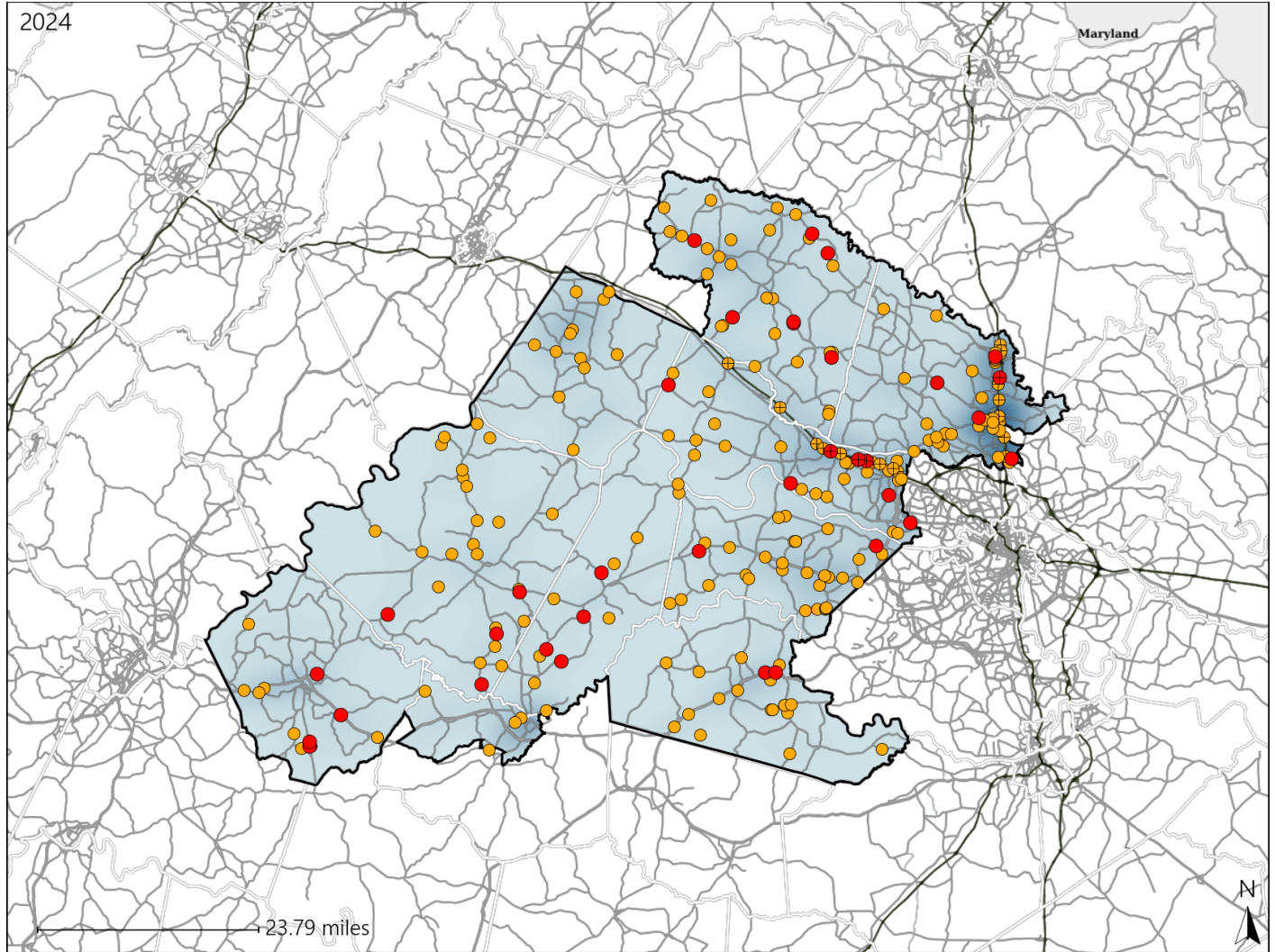


# Virginia Senate District 10 Crash Statistics

Report Generated March, 2025

	Count	Highest Time Period(s)	Highest Day(s)	Highest Month(s)
<b>Fatal Crashes</b>	<b>35</b>	<b>9:00pm - 11:59pm</b>	<b>Friday</b>	<b>May</b>
<b>Resulting Fatalities</b>	<b>40</b>	<b>(26%)</b>	<b>(26%)</b>	<b>(26%)</b>
<b>Serious Injury Crashes</b>	<b>203</b>	<b>3:00pm - 5:59pm</b>	<b>Monday</b>	<b>October</b>
		<b>(26%)</b>	<b>(19%)</b>	<b>(15%)</b>



## Senate District 10 Crashes

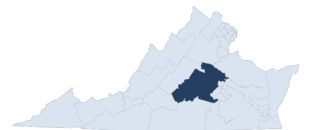
Interstate Crashes

- Fatal
- Serious Injury

Non-interstate Crashes

- Fatal
- Serious Injury

The blue gradient represents the density of all crashes.

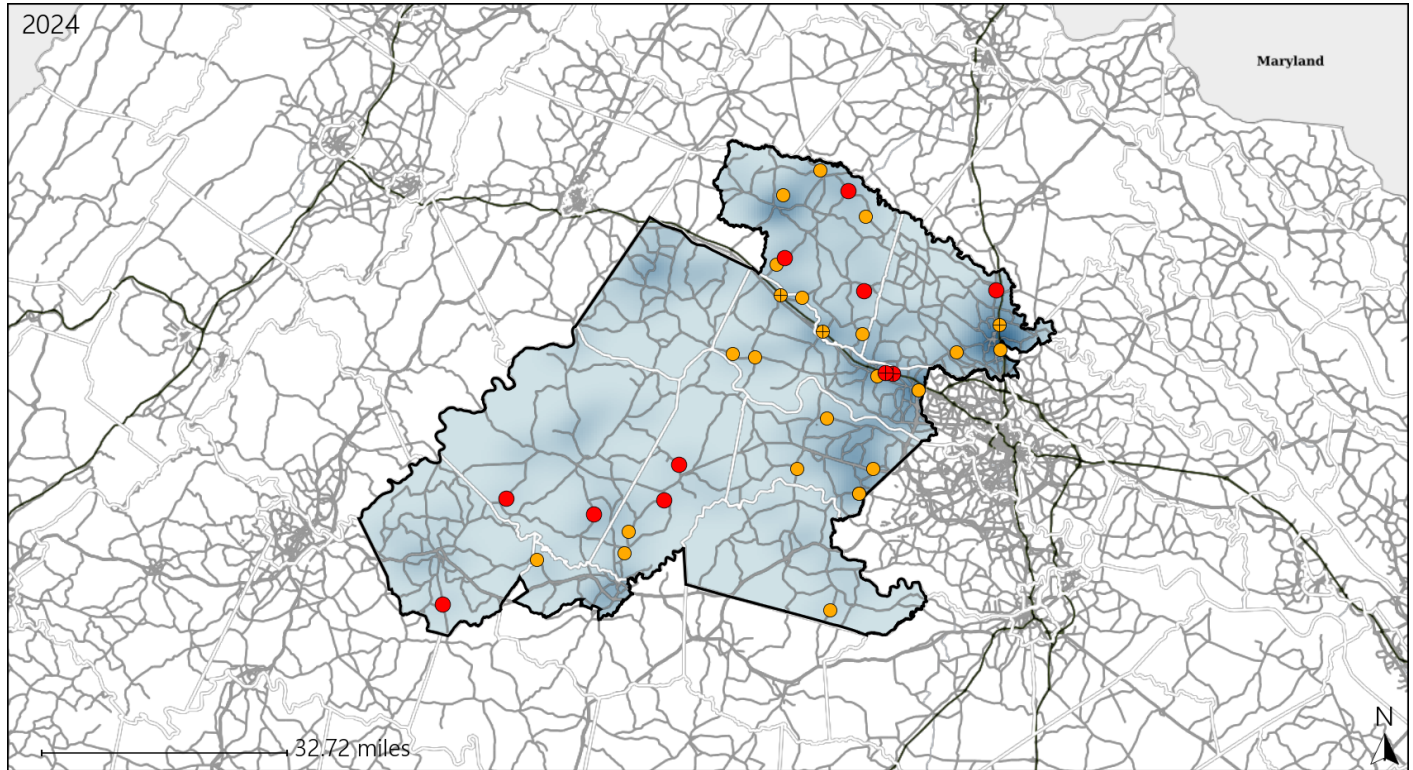


Available Crash Data - Calendar Year (CY)	CY 2021	CY 2022	CY 2023	CY 2024
Total Crashes	3184	3152	3243	3365
Fatal Crashes	50	45	31	35
Injury Crashes	966	943	1004	1022

# Virginia Senate District 10 Alcohol Crash Statistics

Report Generated March, 2025

	Count	Highest Time Period(s)	Highest Day(s)	Highest Month(s)
<b>Fatal Crashes</b>	<b>11</b>	<b>9:00pm - 11:59pm</b>	<b>Friday</b>	<b>December • January</b>
<b>Resulting Fatalities</b>	<b>11</b>	<b>Midnight - 2:59am</b> (54%)	<b>(27%)</b>	<b>(36%)</b>
<b>Serious Injury Crashes</b>	<b>24</b>	<b>6:00pm - 8:59pm</b> (29%)	<b>Sunday</b> (25%)	<b>August</b> (21%)



## Senate District 10 Alcohol-Related Crashes

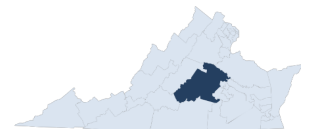
Interstate Crashes

Non-interstate Crashes

- Fatal
- Serious Injury

- Fatal
- Serious Injury

The blue gradient represents the density of all alcohol-related crashes.



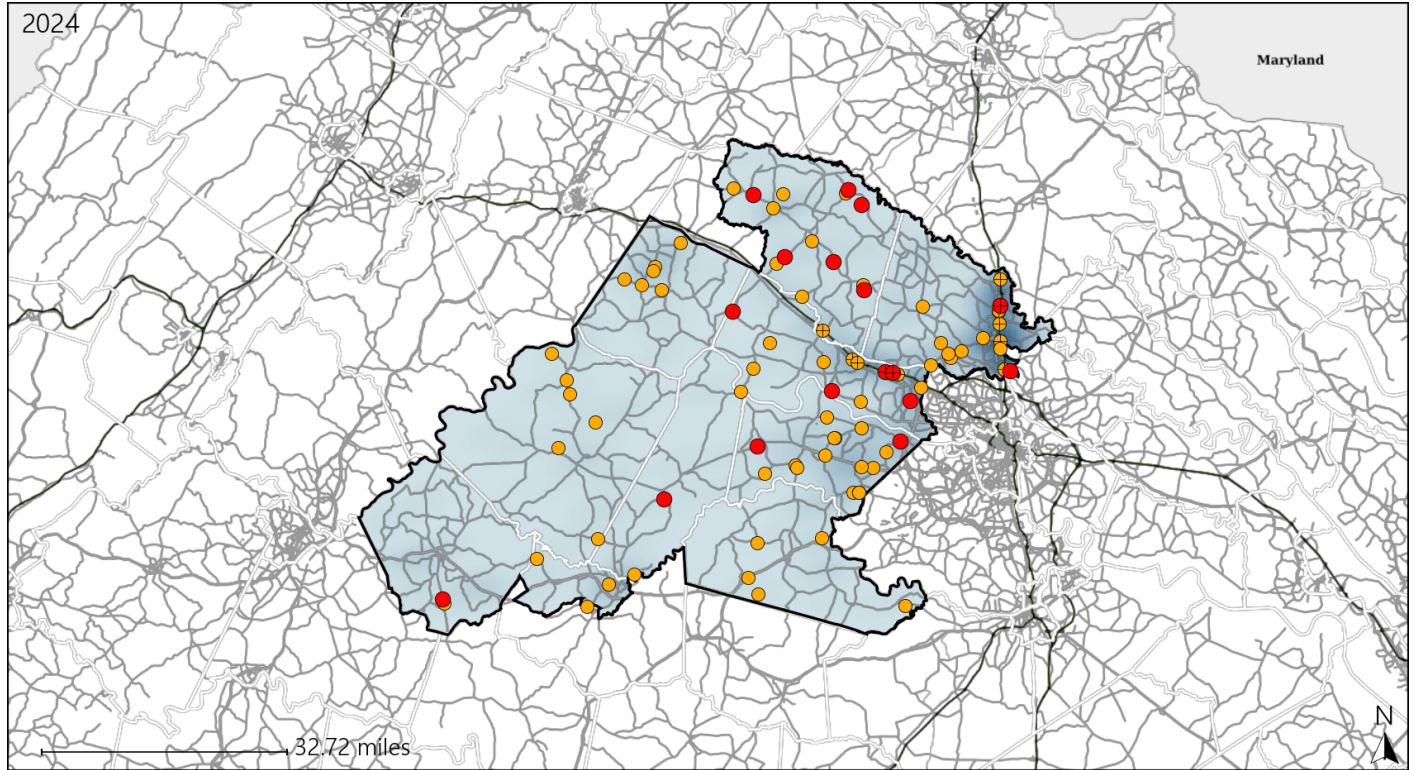
Available Crash Data - Calendar Year (CY)	CY 2021	CY 2022	CY 2023	CY 2024
Total Crashes	3184	3152	3243	3365
Fatal Crashes	50	45	31	35
Injury Crashes	966	943	1004	1022
Alcohol-Related Fatal Crashes	11	6	8	11
Percent of Alcohol-Related Fatal Crashes to Total Fatal Crashes	22%	13%	26%	31%
Alcohol-Related Injury Crashes	84	68	89	85
Percent of Alcohol-Related Injury Crashes to Total Injury Crashes	9%	7%	9%	8%



# Virginia Senate District 10 Speed Crash Statistics

Report Generated March, 2025

	Count	Highest Time Period(s)	Highest Day(s)	Highest Month(s)
<b>Fatal Crashes</b>	<b>17</b>	<b>9:00pm - 11:59pm</b>	<b>Thursday</b>	<b>May</b>
<b>Resulting Fatalities</b>	<b>19</b>	<b>(35%)</b>	<b>(24%)</b>	<b>(35%)</b>
<b>Serious Injury Crashes</b>	<b>69</b>	<b>3:00pm - 5:59pm</b>	<b>Monday • Saturday</b>	<b>June</b>
		<b>(20%)</b>	<b>(38%)</b>	<b>(16%)</b>



## Senate District 10 Speed-Related Crashes

Interstate Crashes

Non-interstate Crashes

- Fatal
- Serious Injury

- Fatal
- Serious Injury

The blue gradient represents the density of all speed-related crashes.

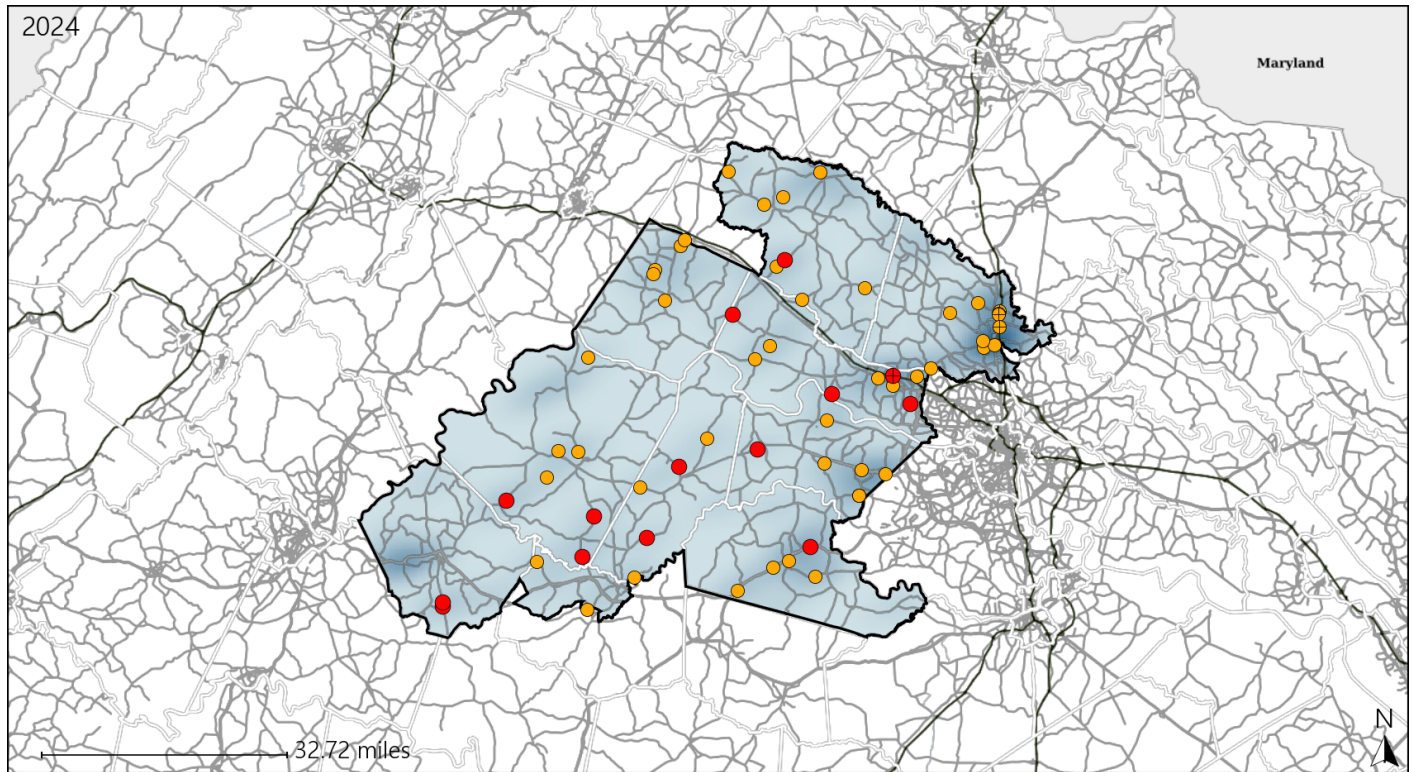


Available Crash Data - Calendar Year (CY)	CY 2021	CY 2022	CY 2023	CY 2024
Total Crashes	3184	3152	3243	3365
Fatal Crashes	50	45	31	35
Injury Crashes	966	943	1004	1022
Speed-Related Fatal Crashes	24	19	16	17
Percent of Speed-Related Fatal Crashes to Total Fatal Crashes	48%	42%	52%	49%
Speed-Related Injury Crashes	240	227	213	263
Percent of Speed-Related Injury Crashes to Total Injury Crashes	25%	24%	21%	26%

# Virginia Senate District 10 Unrestrained Crash Statistics

Report Generated March, 2025

	Count	Highest Time Period(s)	Highest Day(s)	Highest Month(s)
<b>Fatal Crashes</b>	<b>14</b>	<b>9:00pm - 11:59pm</b>	<b>Tuesday</b>	<b>May</b>
<b>Unrestrained Fatalities</b>	<b>15</b>	<b>(29%)</b>	<b>(29%)</b>	<b>(36%)</b>
<b>Serious Injury Crashes</b>	<b>46</b>	<b>3:00pm - 5:59pm</b>	<b>Sunday • Tuesday</b>	<b>February</b>
		<b>6:00pm - 8:59pm</b>	<b>(40%)</b>	<b>(20%)</b>



## Senate District 10 Unrestrained-Related Crashes

Interstate Crashes

Non-interstate Crashes

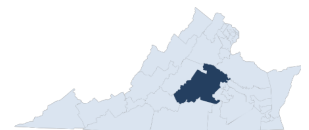
● Fatal

● Fatal

⊕ Serious Injury

⊕ Serious Injury

The blue gradient represents the density of all unrestrained-related crashes.

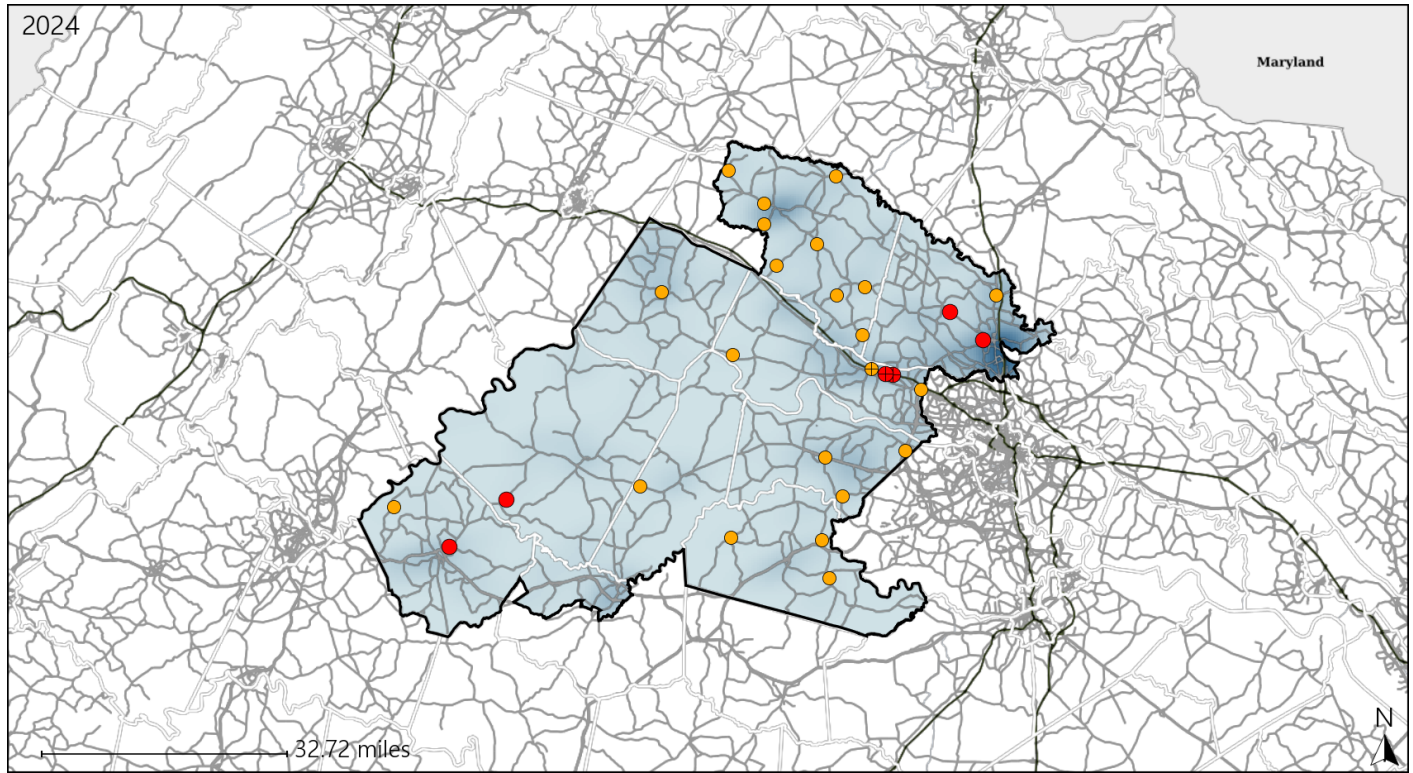


Available Crash Data - Calendar Year (CY)	CY 2021	CY 2022	CY 2023	CY 2024
Total Crashes	3184	3152	3243	3365
Fatalities	55	51	34	40
Injuries	1370	1386	1477	1504
Unrestrained Fatalities	21	24	14	15
Percent of Unrestrained Fatalities to Total Fatalities	38%	47%	41%	38%
Unrestrained Injuries	186	166	150	122
Percent of Unrestrained Injuries to Total Injuries	14%	12%	10%	8%

# Virginia Senate District 10 Distracted Driving Crash Statistics

Report Generated March, 2025

	Count	Highest Time Period(s)	Highest Day(s)	Highest Month(s)
<b>Fatal Crashes</b>	<b>6</b>	3:00pm - 5:59pm	Friday	January • March
<b>Resulting Fatalities</b>	<b>6</b>	Midnight - 2:59am (66%)	(50%)	(66%)
<b>Serious Injury Crashes</b>	<b>22</b>	3:00pm - 5:59pm 6:00pm - 8:59pm (46%)	Saturday (27%)	March • October (36%)



## Senate District 10 Distracted Driving-Related Crashes

Interstate Crashes

Non-interstate Crashes

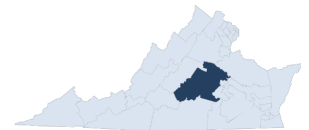
● Fatal

● Fatal

⊕ Serious Injury

⊕ Serious Injury

The blue gradient represents the density of all distracted driving-related crashes.



Available Crash Data - Calendar Year (CY)	CY 2021	CY 2022	CY 2023	CY 2024
Total Crashes	3184	3152	3243	3365
Fatal Crashes	50	45	31	35
Injury Crashes	966	943	1004	1022
Distracted Driving-Related Fatal Crashes	9	3	4	6
Percent of Distracted Driving-Related Fatal Crashes to Total Fatal Crashes	18%	7%	13%	17%
Distracted Driving-Related Injury Crashes	181	149	154	145
Percent of Distracted Driving-Related Injury Crashes to Total Injury Crashes	19%	16%	15%	14%