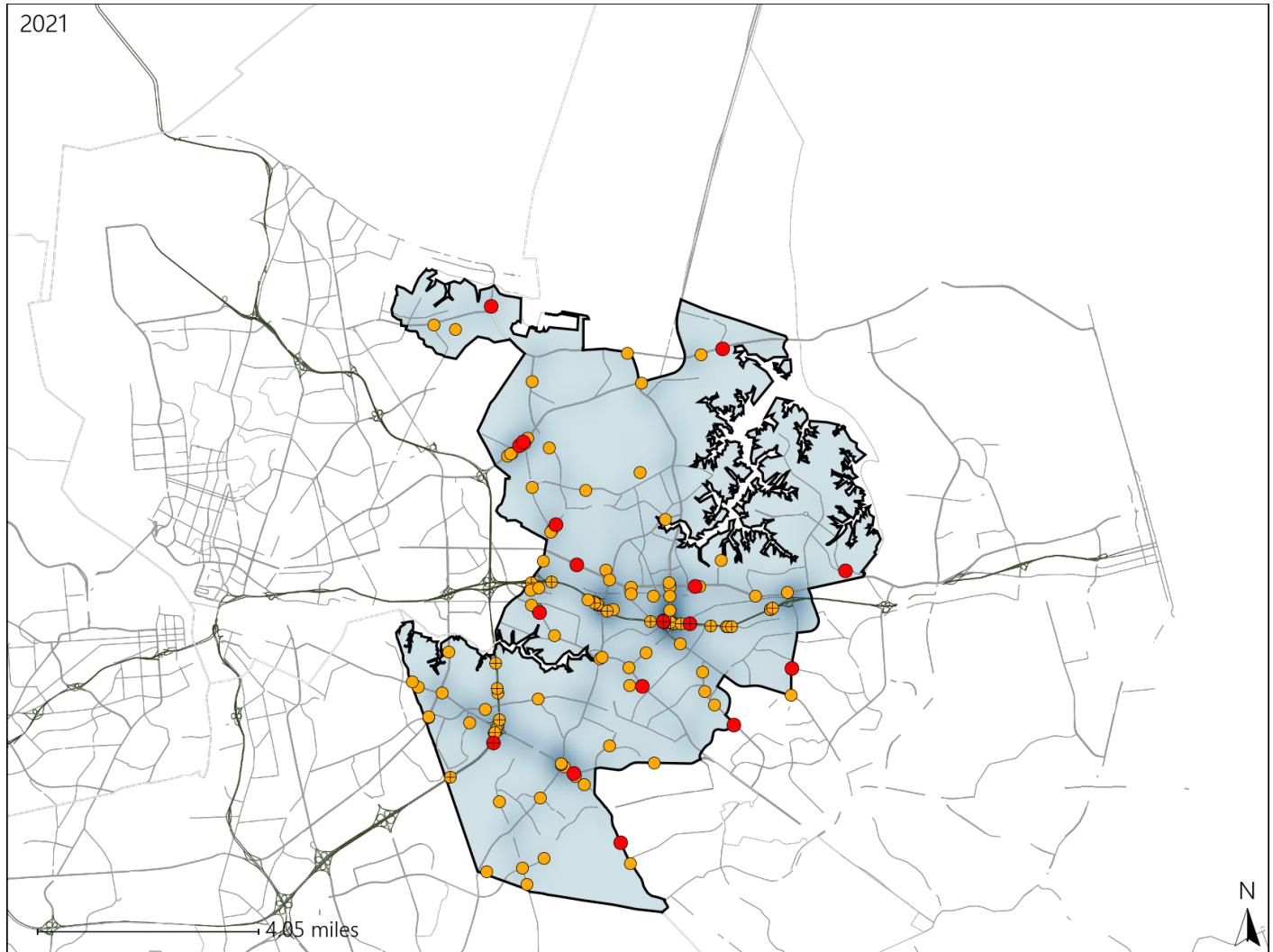


Virginia Senate District 7 Crash Statistics

Report Generated April, 2022

	Count	Highest Time Period(s)	Highest Day(s)	Highest Month(s)
Fatal Crashes	17	6:00pm - 8:59pm	Wednesday	December • July
Resulting Fatalities	18	(35%)	(35%)	(36%)
Serious Injury Crashes	108	6:00pm - 8:59pm	Saturday • Sunday	May
		(21%)	(36%)	(21%)



Senate District 7 Crashes

Interstate Crashes

- Fatal
- Serious Injury

Non-interstate Crashes

- Fatal
- Serious Injury

The blue gradient represents the density of all crashes.

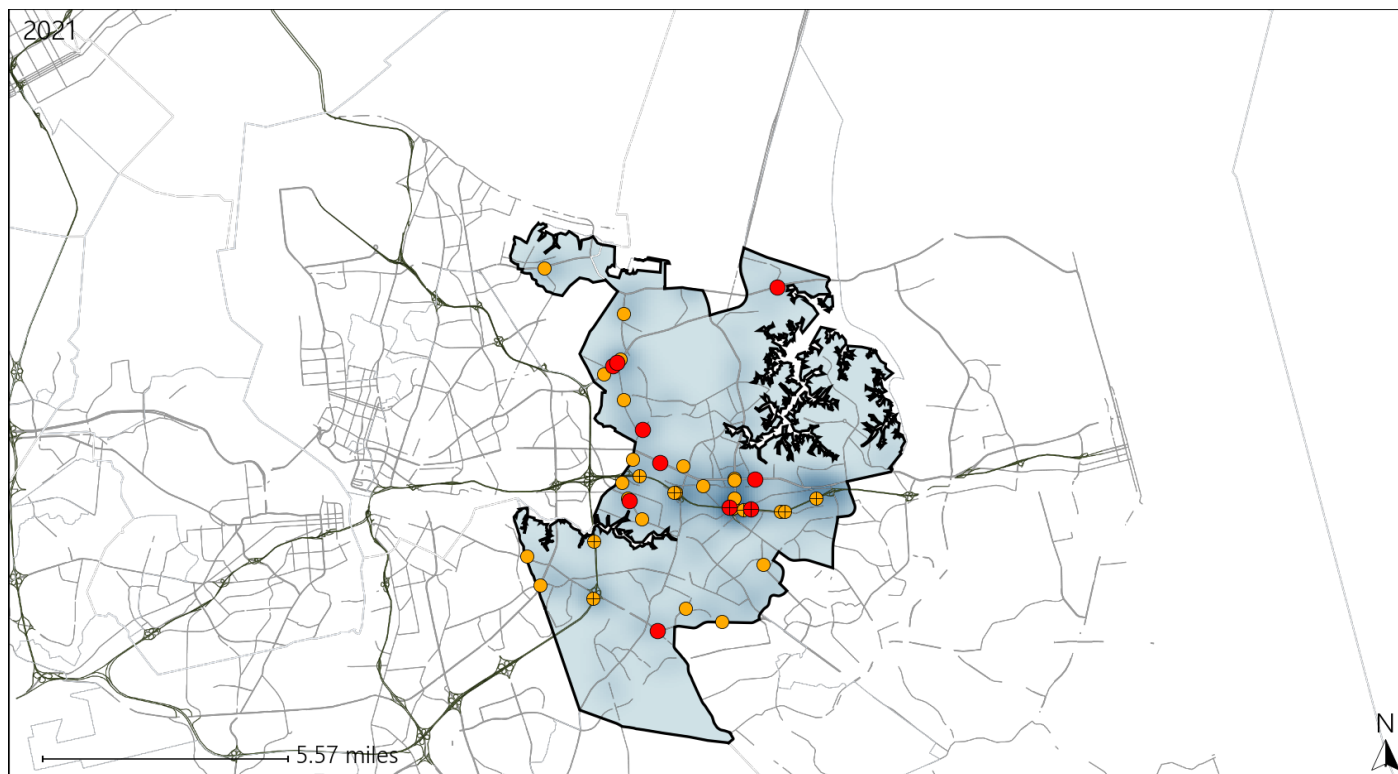


Available Crash Data - Calendar Year (CY)	CY 2018	CY 2019	CY 2020	CY 2021
Total Crashes	3058	3007	2675	2990
Fatal Crashes	15	12	11	17
Injury Crashes	981	909	799	921

Virginia Senate District 7 Alcohol Crash Statistics

Report Generated April, 2022

	Count	Highest Time Period(s)	Highest Day(s)	Highest Month(s)
Fatal Crashes	10	6:00pm - 8:59pm	Sunday • Tuesday	February • July
Resulting Fatalities	11	(40%)	(40%)	(40%)
Serious Injury Crashes	30	6:00pm - 8:59pm Midnight - 2:59am	Sunday	August
		(66%)	(33%)	(17%)



Senate District 7 Alcohol-Related Crashes

Interstate Crashes

Non-interstate Crashes

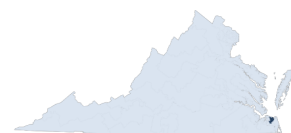
● Fatal

● Fatal

⊕ Serious Injury

⊕ Serious Injury

The blue gradient represents the density of all alcohol-related crashes.

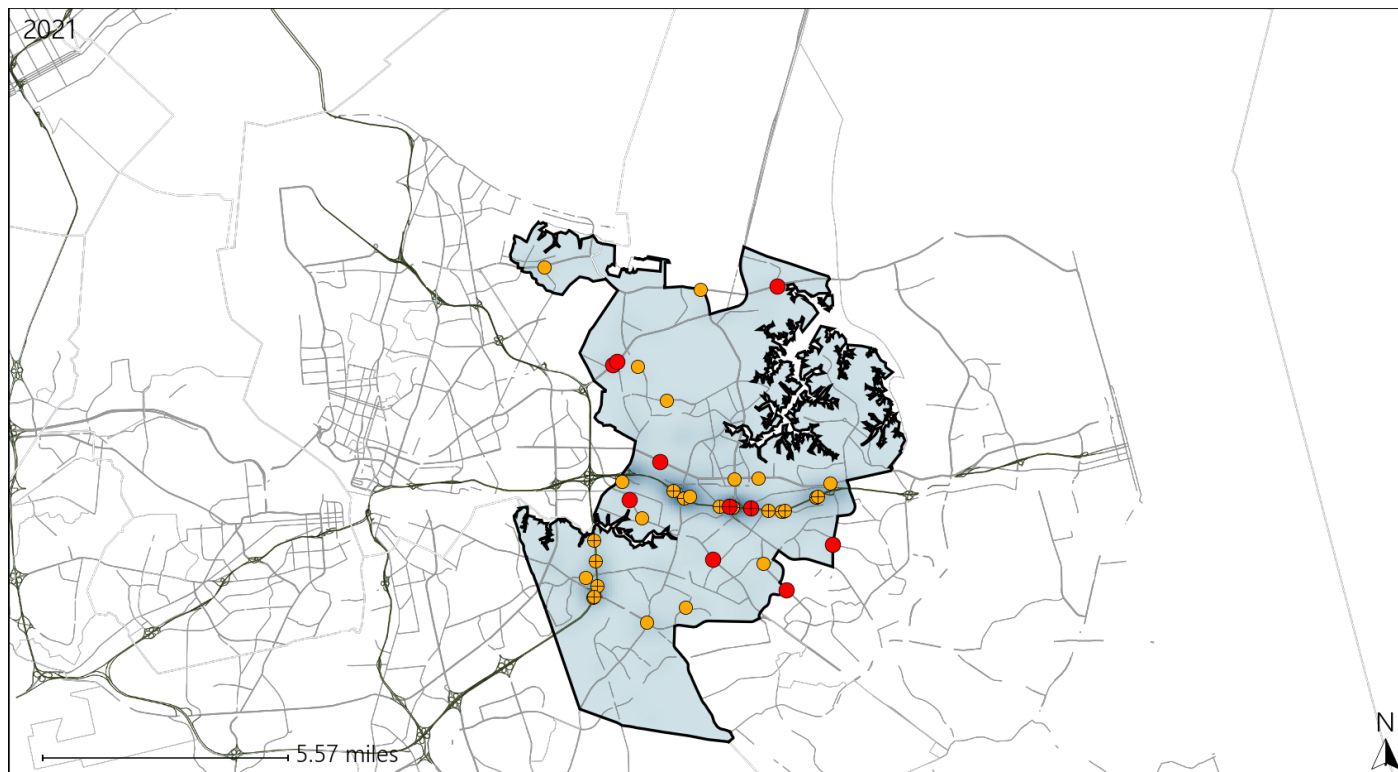


Available Crash Data - Calendar Year (CY)	CY 2018	CY 2019	CY 2020	CY 2021
Total Crashes	3058	3007	2675	2990
Fatal Crashes	15	12	11	17
Injury Crashes	981	909	799	921
Alcohol-Related Fatal Crashes	5	4	5	10
Percent of Alcohol-Related Fatal Crashes to Total Fatal Crashes	33%	33%	45%	59%
Alcohol-Related Injury Crashes	69	45	70	71
Percent of Alcohol-Related Injury Crashes to Total Injury Crashes	7%	5%	9%	8%

Virginia Senate District 7 Speed Crash Statistics

Report Generated April, 2022

	Count	Highest Time Period(s)	Highest Day(s)	Highest Month(s)
Fatal Crashes	10	6:00pm - 8:59pm	Tuesday • Wednesday	July
Resulting Fatalities	11	(30%)	(60%)	(20%)
Serious Injury Crashes	31	Midnight - 2:59am	Thursday • Tuesday	May
		(29%)	(38%)	(23%)



Senate District 7 Speed-Related Crashes

Interstate Crashes

Non-interstate Crashes

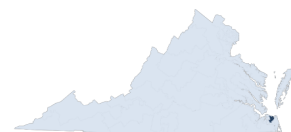
● Fatal

● Fatal

● Serious Injury

● Serious Injury

The blue gradient represents the density of all speed-related crashes.

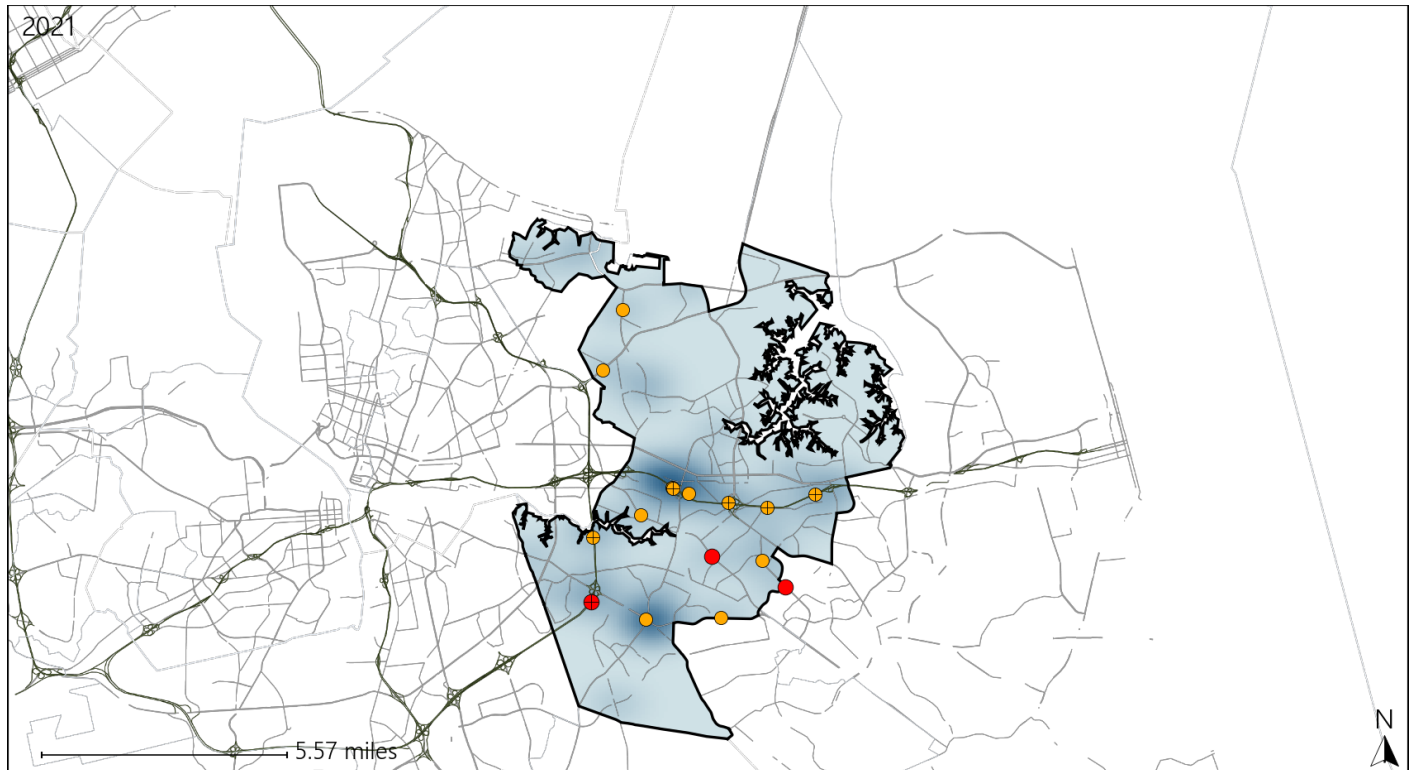


Available Crash Data - Calendar Year (CY)	CY 2018	CY 2019	CY 2020	CY 2021
Total Crashes	3058	3007	2675	2990
Fatal Crashes	15	12	11	17
Injury Crashes	981	909	799	921
Speed-Related Fatal Crashes	8	8	8	10
Percent of Speed-Related Fatal Crashes to Total Fatal Crashes	53%	67%	73%	59%
Speed-Related Injury Crashes	175	150	169	155
Percent of Speed-Related Injury Crashes to Total Injury Crashes	18%	17%	21%	17%

Virginia Senate District 7 Unrestrained Crash Statistics

Report Generated April, 2022

	Count	Highest Time Period(s)	Highest Day(s)	Highest Month(s)
Fatal Crashes	3	3:00am - 5:59am	Wednesday	August • December
Unrestrained Fatalities	3	6:00pm - 8:59pm (66%)	(67%)	(66%)
Serious Injury Crashes	13	Midnight - 2:59am (38%)	Thursday (31%)	May (23%)



Senate District 7 Unrestrained-Related Crashes

Interstate Crashes

- Fatal
- Serious Injury

Non-interstate Crashes

- Fatal
- Serious Injury

The blue gradient represents the density of all unrestrained-related crashes.

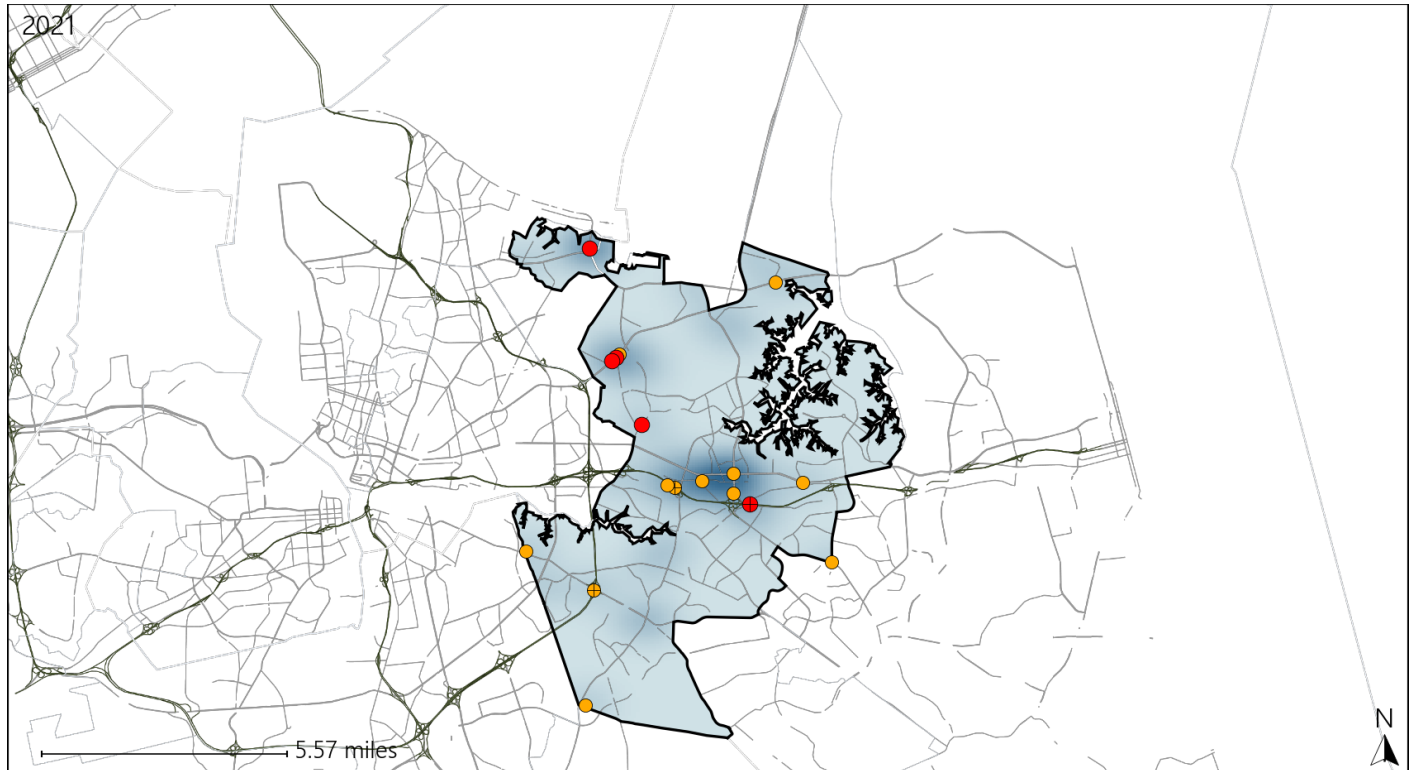


Available Crash Data - Calendar Year (CY)	CY 2018	CY 2019	CY 2020	CY 2021
Total Crashes	3058	3007	2675	2990
Fatalities	17	15	12	18
Injuries	1608	1483	1286	1473
Unrestrained Fatalities	2	7	4	3
Percent of Unrestrained Fatalities to Total Fatalities	12%	47%	33%	17%
Unrestrained Injuries	44	49	44	58
Percent of Unrestrained Injuries to Total Injuries	3%	3%	3%	4%

Virginia Senate District 7 Pedestrian Crash Statistics

Report Generated April, 2022

	Count	Highest Time Period(s)	Highest Day(s)	Highest Month(s)
Fatal Crashes	5	6:00pm - 8:59pm	Wednesday	December • January
Pedestrian Fatalities	5	(60%)	(40%)	(40%)
Serious Injury Crashes	12	6:00pm - 8:59pm	Sunday	April • August
		(25%)	(42%)	(34%)



Senate District 7 Pedestrian-Related Crashes

Interstate Crashes

Non-interstate Crashes

- Fatal
- Serious Injury

- Fatal
- Serious Injury

The blue gradient represents the density of all pedestrian-related crashes.



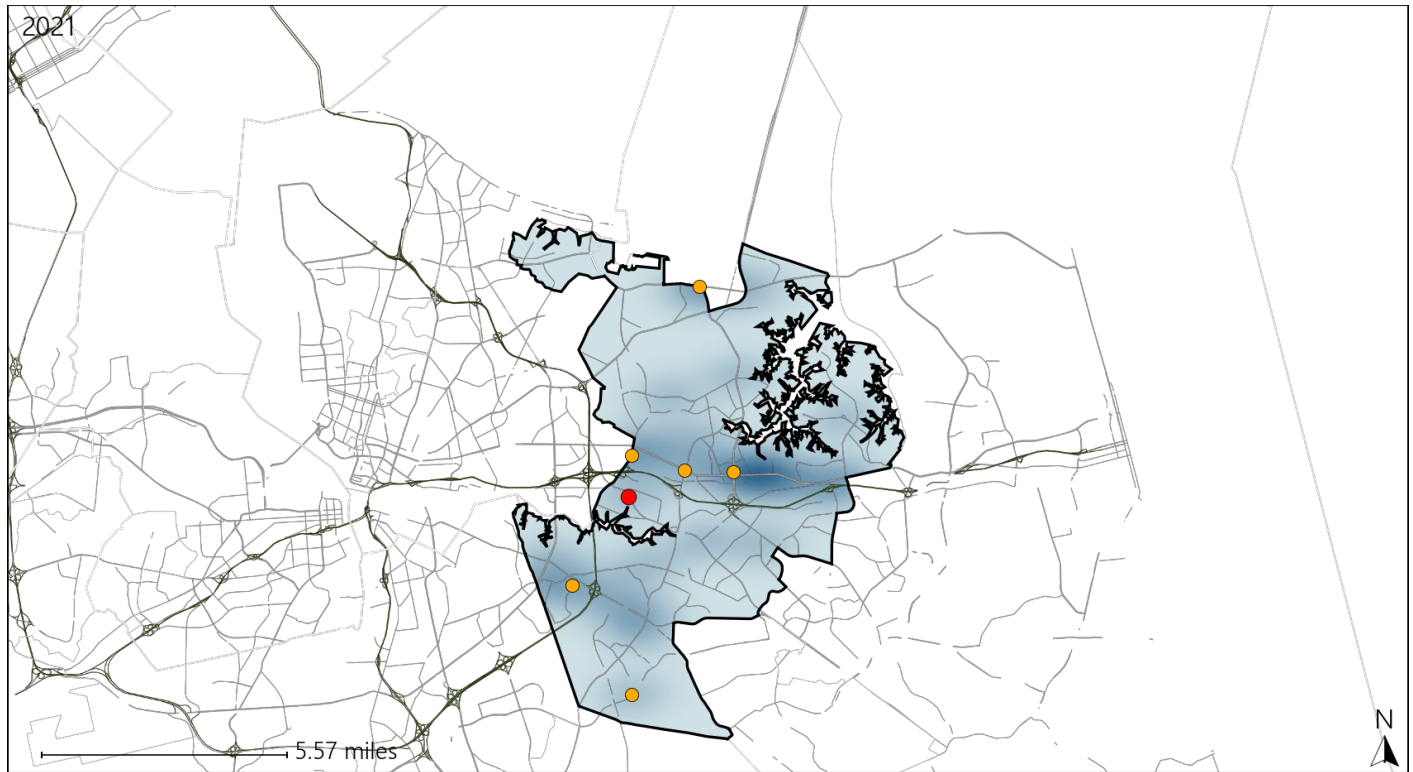
Available Crash Data - Calendar Year (CY)	CY 2018	CY 2019	CY 2020	CY 2021
Total Crashes	3058	3007	2675	2990
Fatal Crashes	15	12	11	17
Injury Crashes	981	909	799	921
Pedestrian-Related Fatal Crashes	0	2	2	5
Percent of Pedestrian-Related Fatal Crashes to Total Fatal Crashes	0%	17%	18%	29%
Pedestrian-Related Injury Crashes	41	27	29	36
Percent of Pedestrian-Related Injury Crashes to Total Injury Crashes	4%	3%	4%	4%

Report of Crashes for January 1st - December 31st, 2021

Virginia Senate District 7 Bicycle Crash Statistics

Report Generated April, 2022

	Count	Highest Time Period(s)	Highest Day(s)	Highest Month(s)
Fatal Crashes	1	3:00pm - 5:59pm	Tuesday	February
Bicycle Fatalities	1	(100%)	(100%)	(100%)
Serious Injury Crashes	6	6:00pm - 8:59pm 9:00pm - 11:59pm	Friday • Saturday	August
		(66%)	(66%)	(50%)



Senate District 7 Bicycle-Related Crashes

Interstate Crashes

Non-interstate Crashes

● Fatal

● Fatal

⊕ Serious Injury

⊕ Serious Injury

The blue gradient represents the density of all bicycle-related crashes.

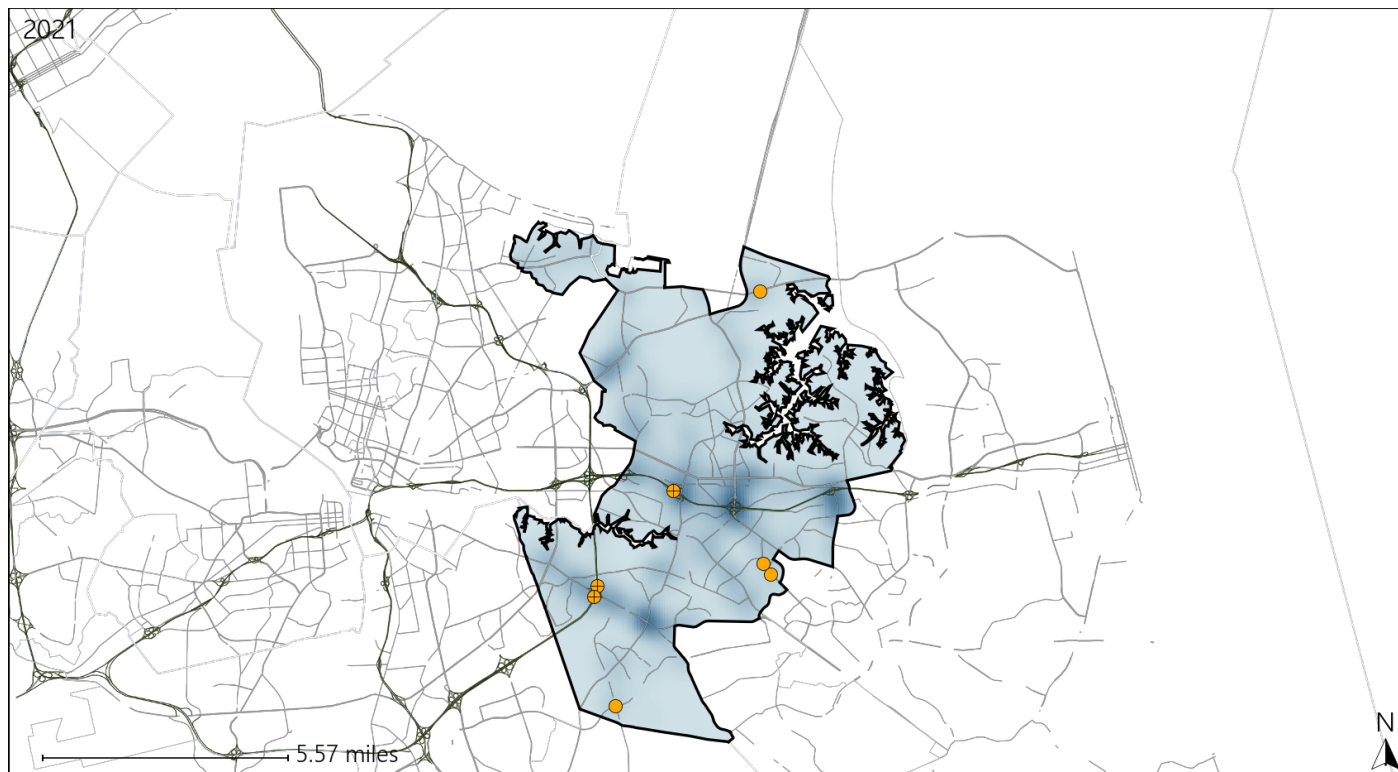


Available Crash Data - Calendar Year (CY)	CY 2018	CY 2019	CY 2020	CY 2021
Total Crashes	3058	3007	2675	2990
Fatal Crashes	15	12	11	17
Injury Crashes	981	909	799	921
Bicycle-Related Fatal Crashes	1	0	0	1
Percent of Bicycle-Related Fatal Crashes to Total Fatal Crashes	7%	0%	0%	6%
Bicycle-Related Injury Crashes	26	29	26	26
Percent of Bicycle-Related Injury Crashes to Total Injury Crashes	3%	3%	3%	3%

Virginia Senate District 7 Distracted Driving Crash Statistics

Report Generated April, 2022



	Count	Highest Time Period(s)	Highest Day(s)	Highest Month(s)
Fatal Crashes	0	-	-	-
Resulting Fatalities	0	-	-	-
Serious Injury Crashes	7	Noon - 2:59pm (43%)	Thursday • Tuesday (58%)	May (43%)



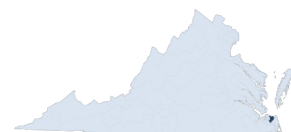
Senate District 7 Distracted Driving-Related Crashes

Interstate Crashes

Non-interstate Crashes

 Fatal Fatal Serious Injury Serious Injury

The blue gradient represents the density of all distracted driving-related crashes.



Available Crash Data - Calendar Year (CY)	CY 2018	CY 2019	CY 2020	CY 2021
Total Crashes	3058	3007	2675	2990
Fatal Crashes	15	12	11	17
Injury Crashes	981	909	799	921
Distracted Driving-Related Fatal Crashes	2	3	3	0
Percent of Distracted Driving-Related Fatal Crashes to Total Fatal Crashes	13%	25%	27%	0%
Distracted Driving-Related Injury Crashes	179	176	143	155
Percent of Distracted Driving-Related Injury Crashes to Total Injury Crashes	18%	19%	18%	17%