



NHTSA

NATIONAL HIGHWAY TRAFFIC SAFETY ADMINISTRATION

Virginia Highway Summit

Keith Williams
Enforcement and Justice
Services Division

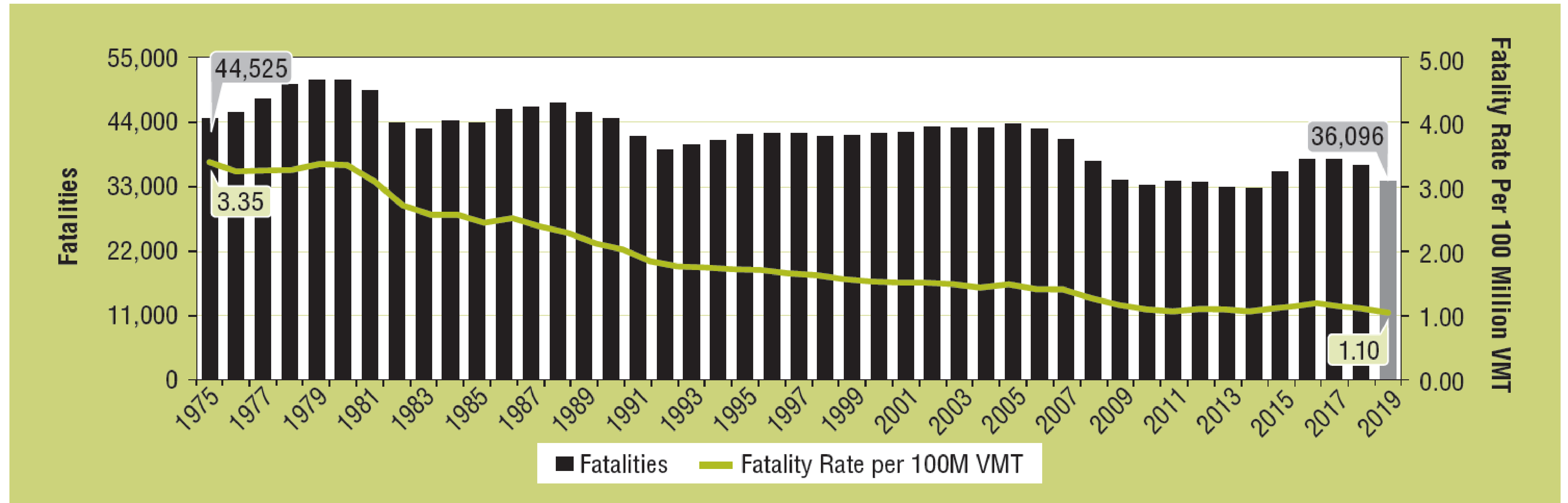
Fatality Trends

36,096 fatalities in 2019—

739 fewer than the 36,835 fatalities in 2018

This is the third consecutive year in which traffic fatalities have declined

Fatalities and Fatality Rate per 100 Million VMT, 1975-2019



Sources: FARS 1975-2018 Final File, 2019 ARF; 1975-2018 VMT – FHWA's Annual Highway Statistics; 2019 VMT – FHWA's September 2020 TVT



Risky Driving Behavior COVID 19

- Speed
- Seatbelt Use
- Impaired Driving
- VMT

U.S. Department of Transportation
National Highway Traffic Safety Administration

TRAFFIC SAFETY FACTS
Research Note

NHTSA

DOT HS 813 135 Behavioral Safety Research June 2021

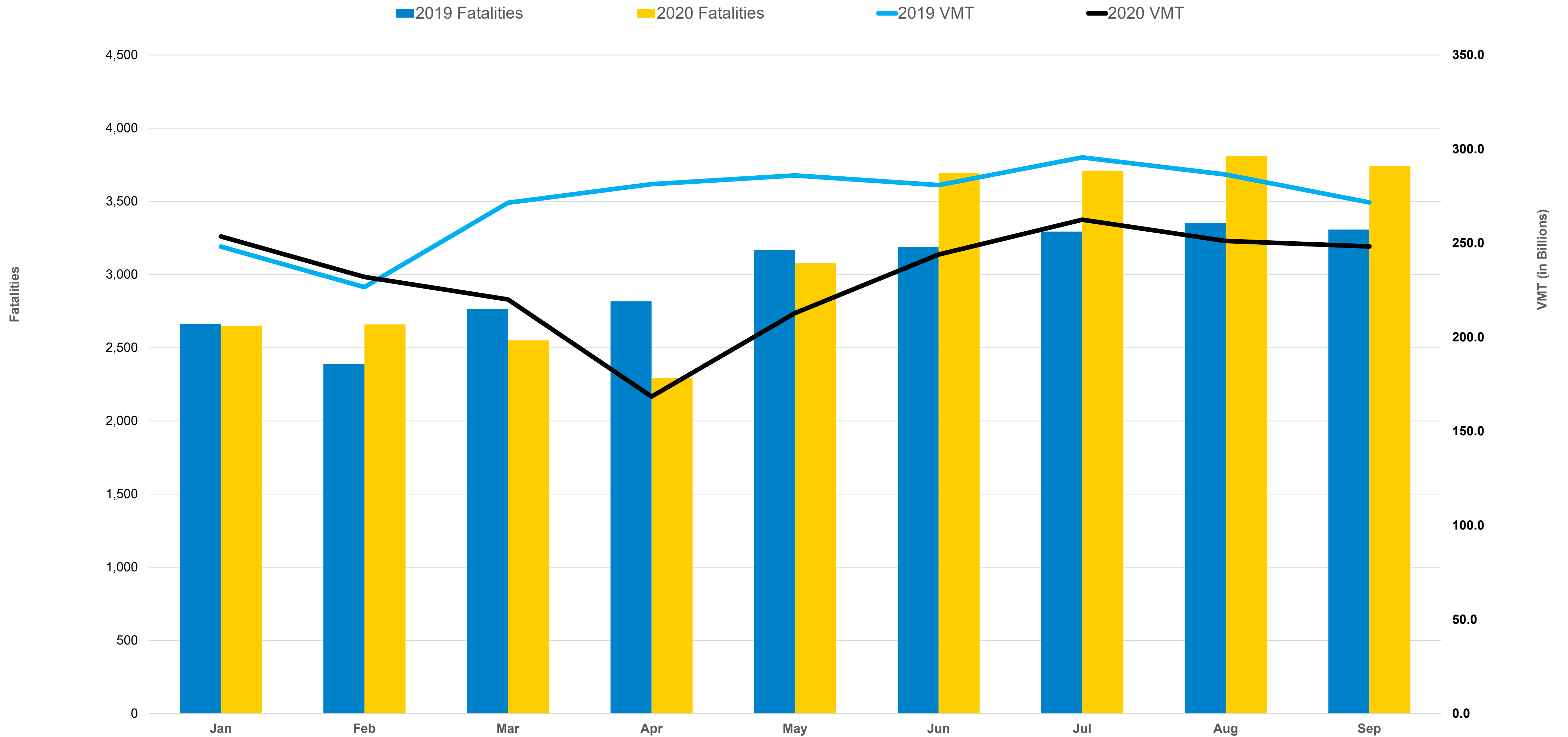
Update to Special Reports on Traffic Safety During the COVID-19 Public Health Emergency: Fourth Quarter Data

The National Highway Traffic Safety Administration Background

- <https://rosap.nhtsa.gov/view/dot/56125>

COVID-19 Pandemic and Risky Driving

Fatalities and VMT by Month, 2019 and 2020



Source: NHTSA Fatality Projections and FHWA Traffic Volume Trends

NHTSA Early Estimates of Motor Vehicle Traffic Fatalities and Fatality Rate by Sub-Categories in 2020

Traffic fatalities (fatality counts) in the following categories showed large increases in 2020 as compared to 2019:

- **On rural local/collector roads (up 11%), urban**
- **Interstates (up 15%), and urban local/collector roads (up 12%);**
- **During nighttime (up 11%);**
- **During the weekend (up 9%);**
- **In older vehicles 10 years or older (up 6%);**
- **In rollover crashes (up 9%);**
- **Occupant ejection (up 20%);**
- **In single-vehicle crashes (up 9%);**
- **In speeding-related crashes (up 11%);**
- **In the 16-to-24 age group (up 15%), the 25-to-34 age group (up 18%), and the 35-to-44 age group (up 14%);**
- **Males (up 9%);**
- **Unrestrained occupants of passenger vehicles (up 15%);**
- **Black people (up 23%); and**
- **In police-reported alcohol involvement crashes (up 9%).**



**SPEED
SPEED MANAGEMENT
SPEEDING
AGGRESSIVE DRIVING**

it's
Complicated

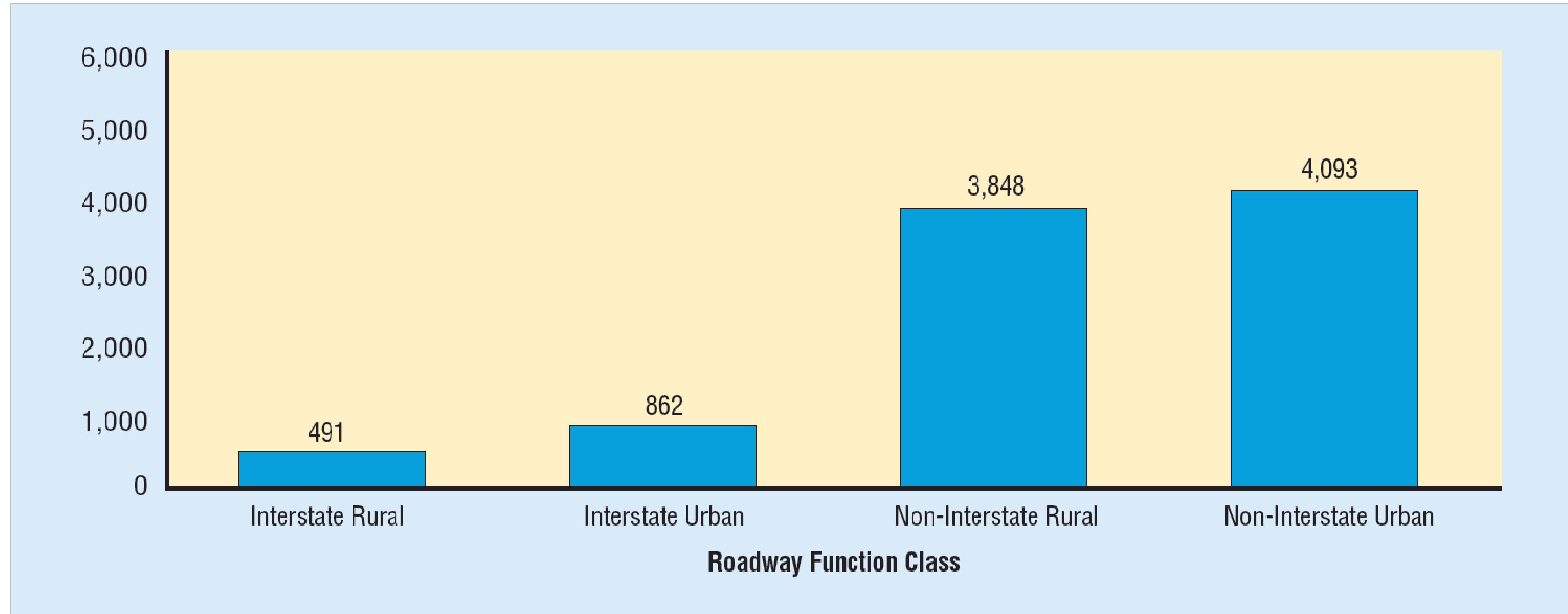
Speeding Fatalities - People

- Young males
- Unlicensed
- Impaired
- Motorcycles
- Unrestrained



Speeding Fatalities - Roads

Speeding-Related Traffic Fatalities, by Roadway Function Class, 2018



Source: FARS 2018 ARF

Note: Fatalities on known function class but unknown land use not included.

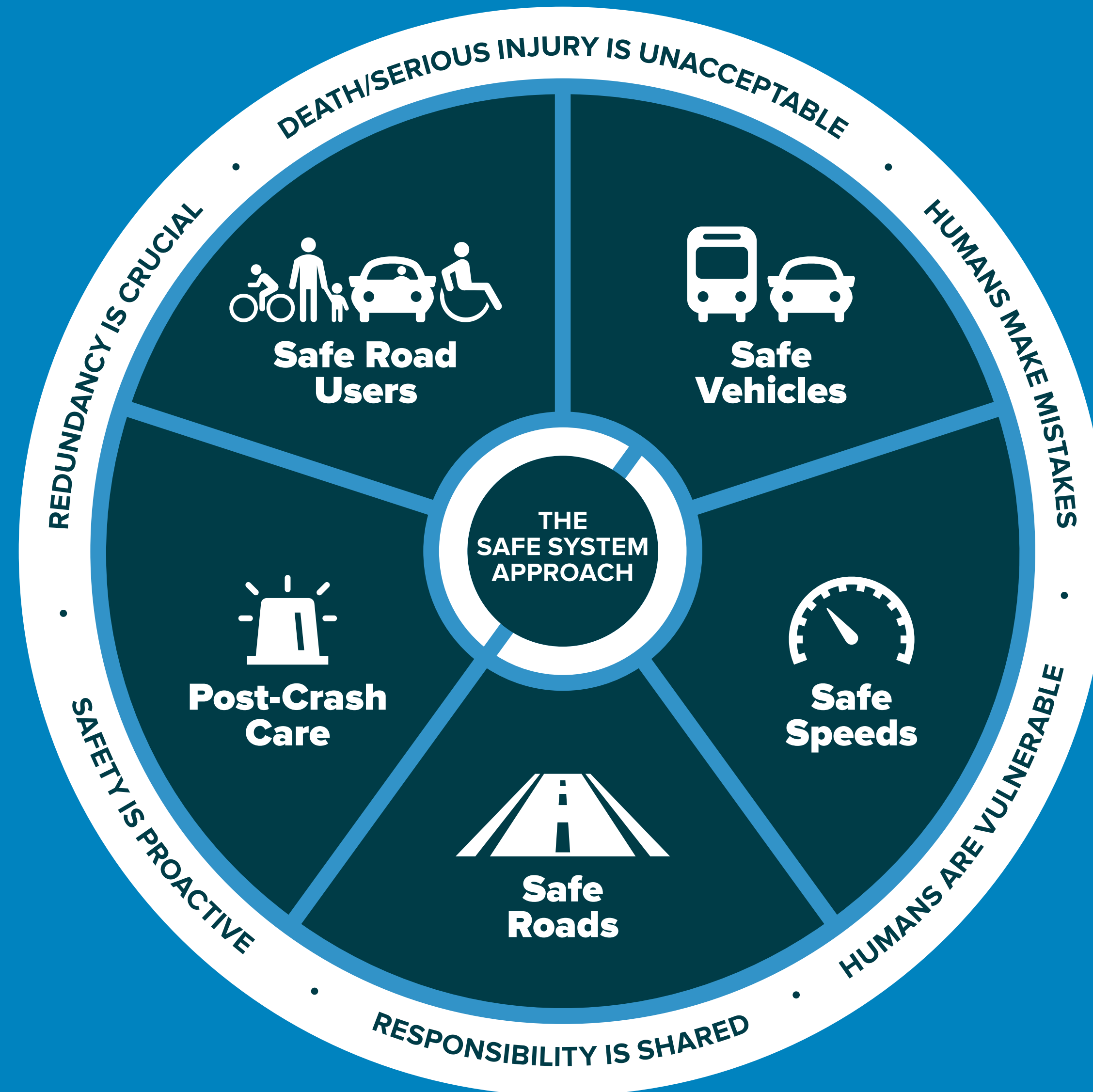
Behavioral Countermeasures

High Visibility Enforcement

- Strong Laws
- Public Information Campaigns
- Targeted Traffic Enforcement Initiatives



THE SAFE SYSTEM APPROACH





Questions ?

Keith Williams

Keith.Williams@dot.gov

202 366-8137