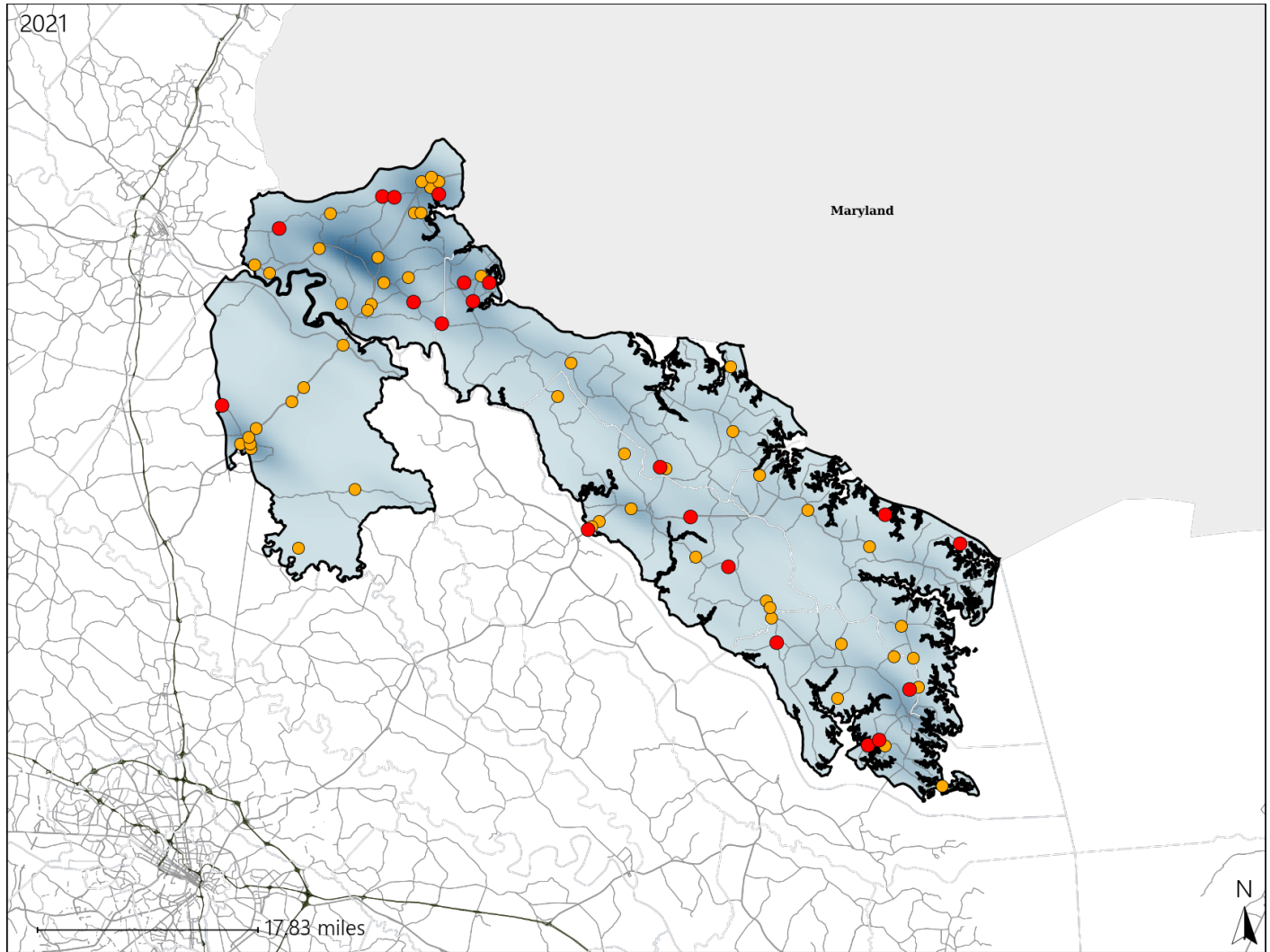


Virginia House District 99 Crash Statistics

Report Generated April, 2022

	Count	Highest Time Period(s)	Highest Day(s)	Highest Month(s)
Fatal Crashes	20	Noon - 2:59pm	Friday • Saturday	July
Resulting Fatalities	22	(30%)	(40%)	(20%)
Serious Injury Crashes	52	3:00pm - 5:59pm	Sunday	October
		(23%)	(27%)	(13%)



House District 99 Crashes

Interstate Crashes

- Fatal
- Serious Injury

Non-interstate Crashes

- Fatal
- Serious Injury

The blue gradient represents the density of all crashes.

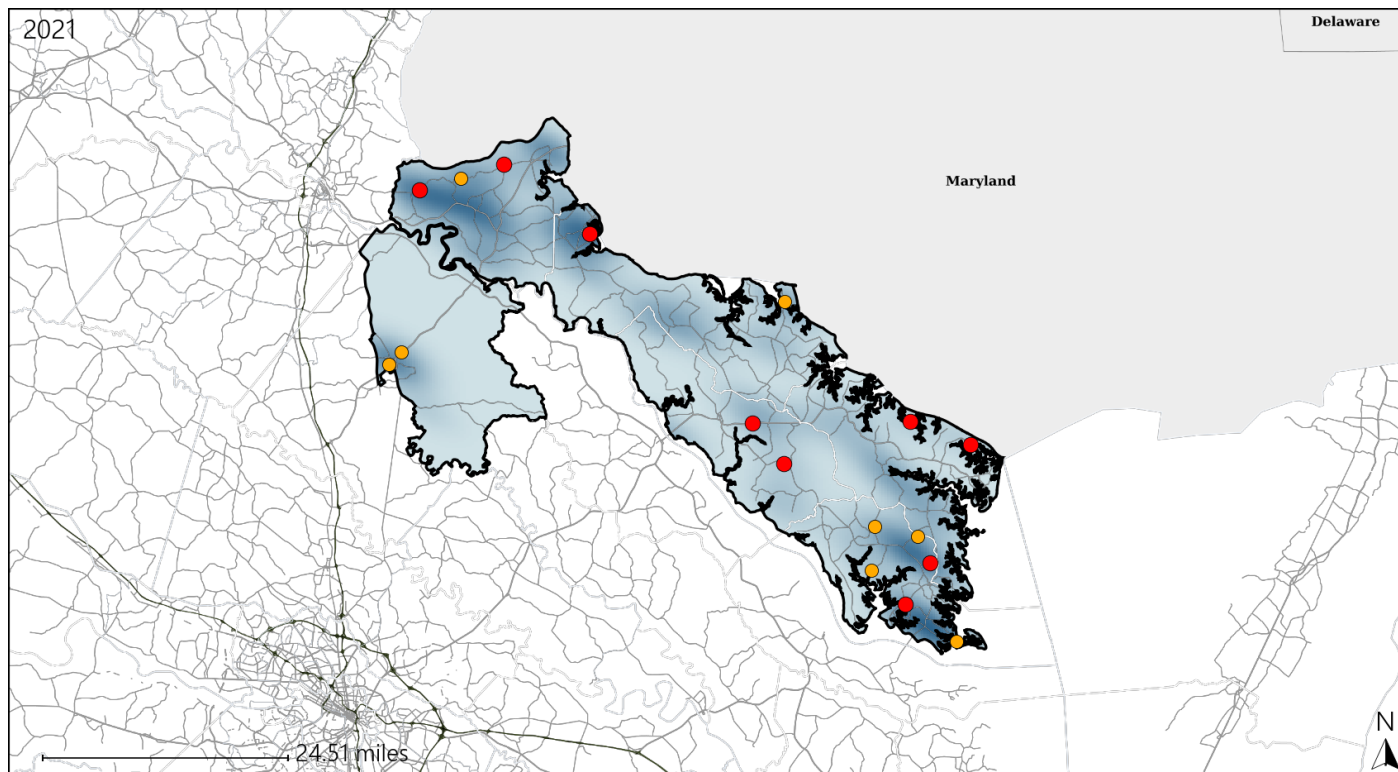


Available Crash Data - Calendar Year (CY)	CY 2018	CY 2019	CY 2020	CY 2021
Total Crashes	961	987	813	942
Fatal Crashes	14	15	18	20
Injury Crashes	312	313	232	256

Virginia House District 99 Alcohol Crash Statistics

Report Generated April, 2022

	Count	Highest Time Period(s)	Highest Day(s)	Highest Month(s)
Fatal Crashes	9	9:00pm - 11:59pm	Saturday	March - May
Resulting Fatalities	10	(44%)	(33%)	(44%)
Serious Injury Crashes	8	6:00am - 8:59am	Saturday - Sunday	March
		(38%)	(100%)	(38%)



House District 99 Alcohol-Related Crashes

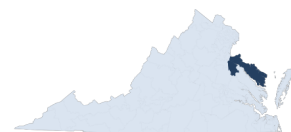
Interstate Crashes

Non-interstate Crashes

- Fatal
- Serious Injury

- Fatal
- Serious Injury

The blue gradient represents the density of all alcohol-related crashes.

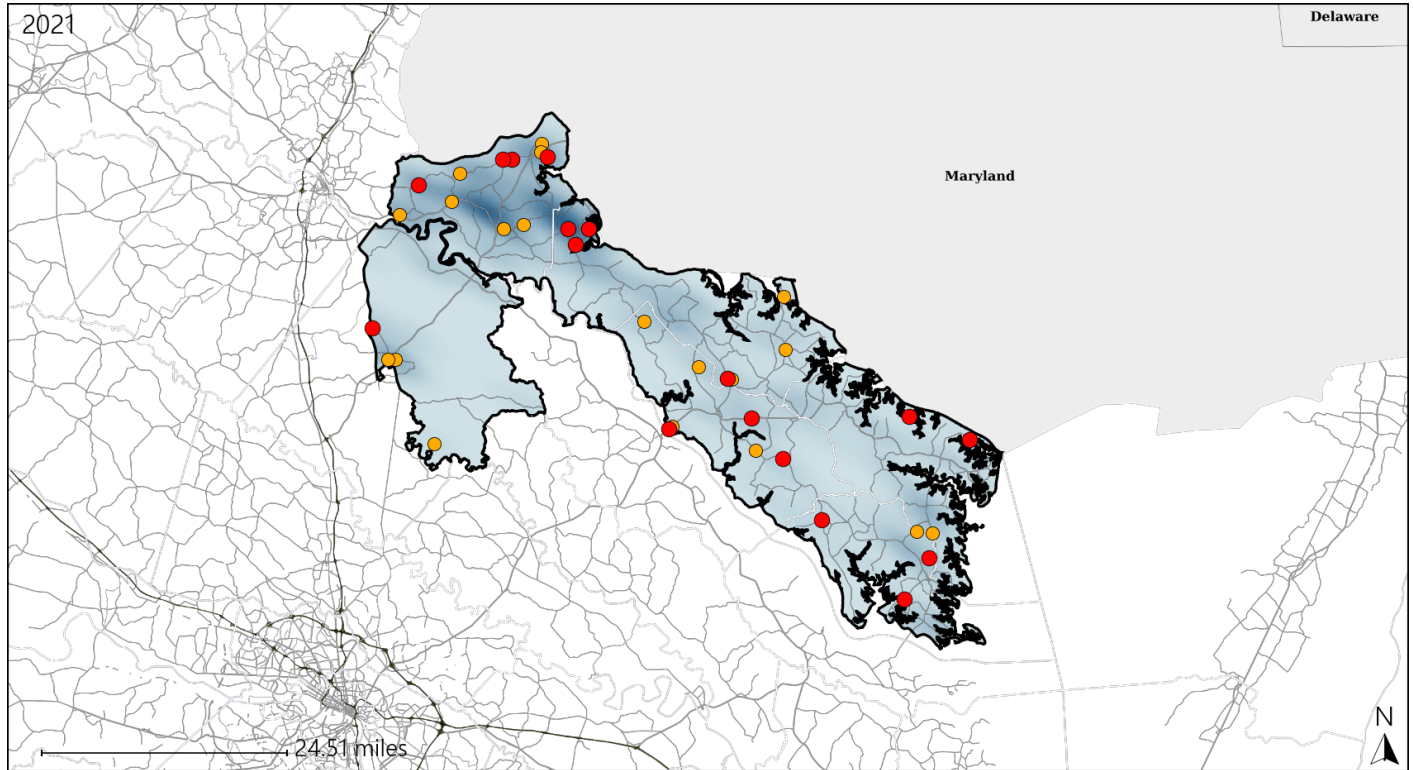


Available Crash Data - Calendar Year (CY)	CY 2018	CY 2019	CY 2020	CY 2021
Total Crashes	961	987	813	942
Fatal Crashes	14	15	18	20
Injury Crashes	312	313	232	256
Alcohol-Related Fatal Crashes	2	4	6	9
Percent of Alcohol-Related Fatal Crashes to Total Fatal Crashes	14%	27%	33%	45%
Alcohol-Related Injury Crashes	43	45	36	35
Percent of Alcohol-Related Injury Crashes to Total Injury Crashes	14%	14%	16%	14%

Virginia House District 99 Speed Crash Statistics

Report Generated April, 2022

	Count	Highest Time Period(s)	Highest Day(s)	Highest Month(s)
Fatal Crashes	17	6:00pm - 8:59pm	Friday • Saturday	October
Resulting Fatalities	19	9:00pm - 11:59pm (48%)	(48%)	(18%)
Serious Injury Crashes	19	3:00pm - 5:59pm (37%)	Sunday (21%)	June (21%)



House District 99 Speed-Related Crashes

Interstate Crashes

Non-interstate Crashes

- Fatal
- Serious Injury

- Fatal
- Serious Injury

The blue gradient represents the density of all speed-related crashes.

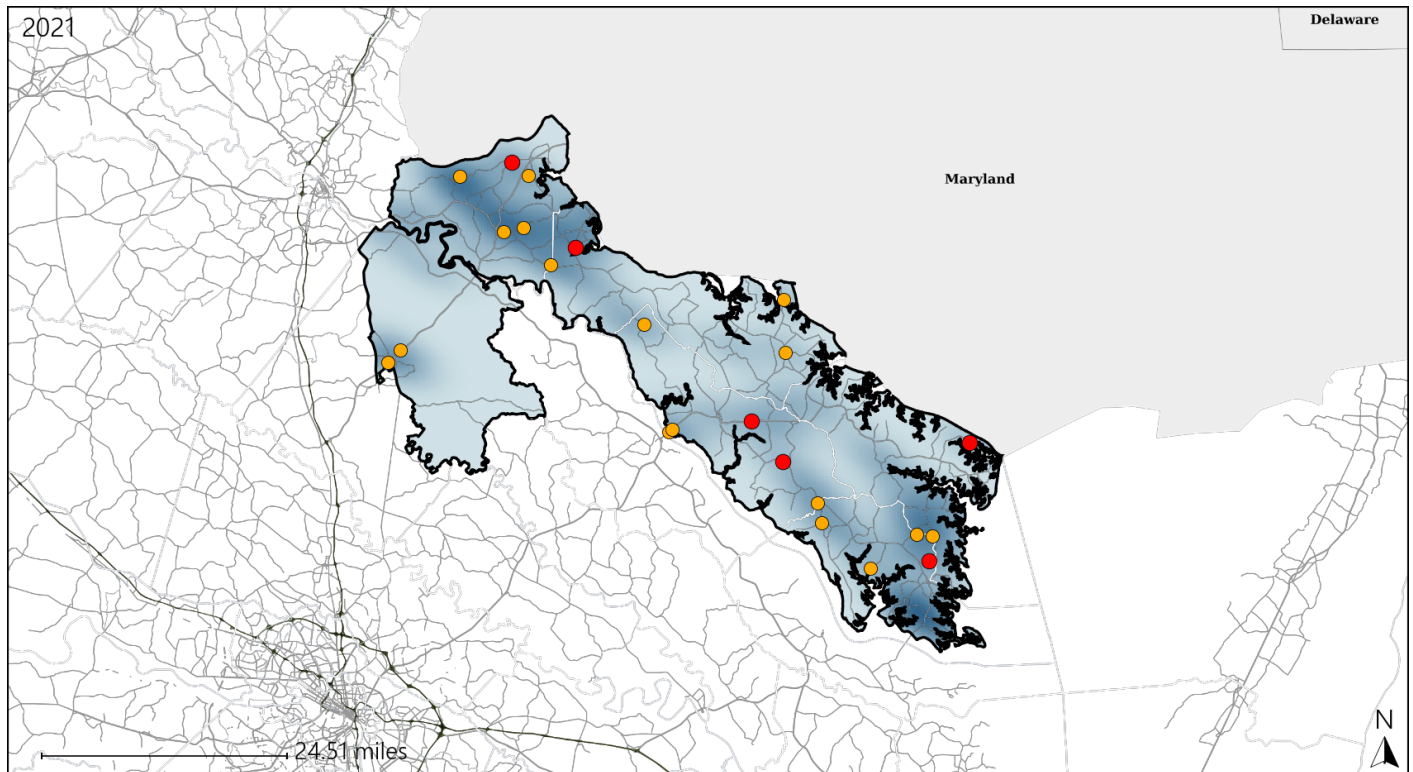


Available Crash Data - Calendar Year (CY)	CY 2018	CY 2019	CY 2020	CY 2021
Total Crashes	961	987	813	942
Fatal Crashes	14	15	18	20
Injury Crashes	312	313	232	256
Speed-Related Fatal Crashes	8	7	11	17
Percent of Speed-Related Fatal Crashes to Total Fatal Crashes	57%	47%	61%	85%
Speed-Related Injury Crashes	93	91	73	76
Percent of Speed-Related Injury Crashes to Total Injury Crashes	30%	29%	31%	30%

Virginia House District 99 Unrestrained Crash Statistics

Report Generated April, 2022

	Count	Highest Time Period(s)	Highest Day(s)	Highest Month(s)
Fatal Crashes	6	Midnight - 2:59am	Saturday	April • August
Unrestrained Fatalities	7	Noon - 2:59pm (66%)	(33%)	(34%)
Serious Injury Crashes	17	3:00pm - 5:59pm 6:00am - 8:59am (48%)	Sunday • Thursday (48%)	March • November (36%)



House District 99 Unrestrained-Related Crashes

Interstate Crashes

Non-interstate Crashes

● Fatal

● Fatal

⊕ Serious Injury

⊕ Serious Injury

The blue gradient represents the density of all unrestrained-related crashes.

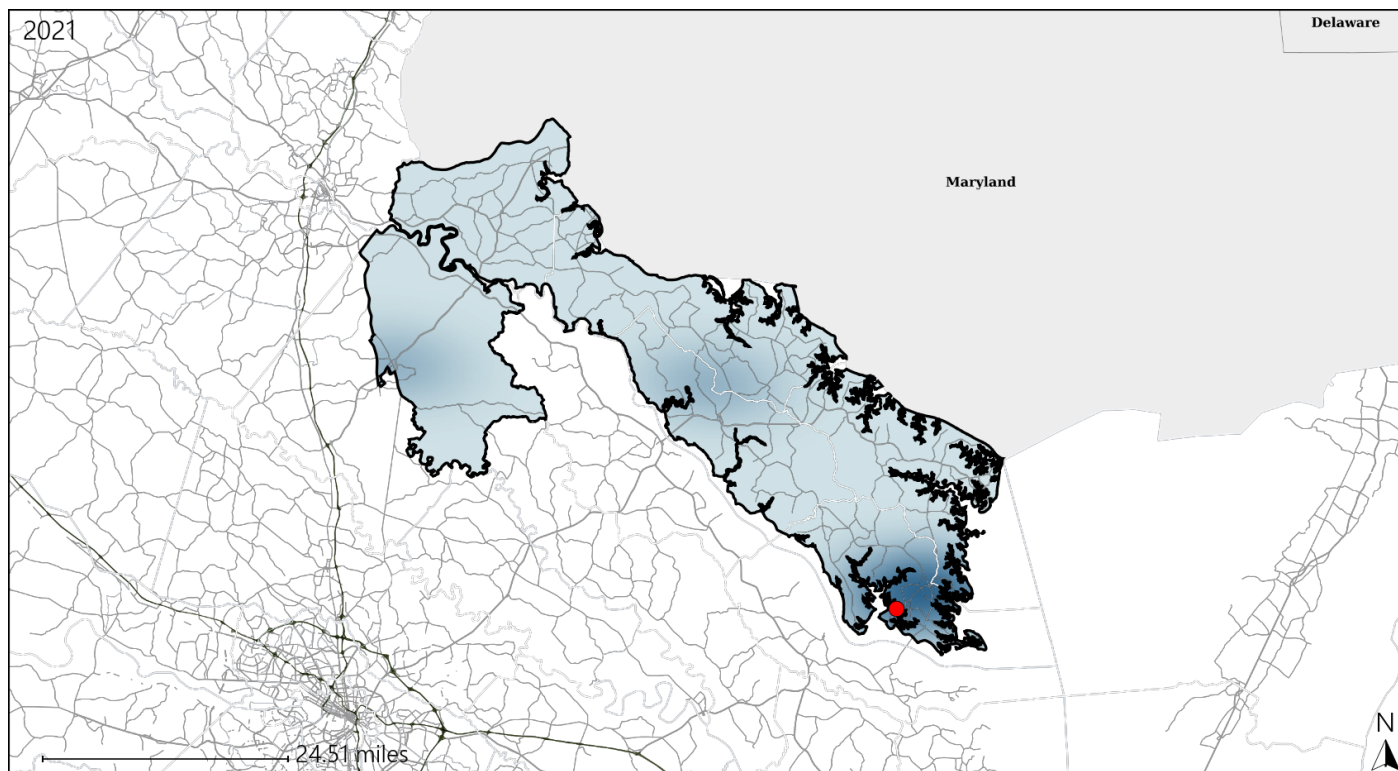


Available Crash Data - Calendar Year (CY)	CY 2018	CY 2019	CY 2020	CY 2021
Total Crashes	961	987	813	942
Fatalities	16	15	19	22
Injuries	461	473	325	373
Unrestrained Fatalities	7	11	13	7
Percent of Unrestrained Fatalities to Total Fatalities	44%	73%	68%	32%
Unrestrained Injuries	68	55	55	70
Percent of Unrestrained Injuries to Total Injuries	15%	12%	17%	19%

Virginia House District 99 Pedestrian Crash Statistics

Report Generated April, 2022



	Count	Highest Time Period(s)	Highest Day(s)	Highest Month(s)
Fatal Crashes	1	Noon - 2:59pm	Wednesday	March
Pedestrian Fatalities	1	(100%)	(100%)	(100%)
Serious Injury Crashes	0	-	-	-



House District 99 Pedestrian-Related Crashes

Interstate Crashes

Non-interstate Crashes

 Fatal Fatal Serious Injury Serious Injury

The blue gradient represents the density of all pedestrian-related crashes.

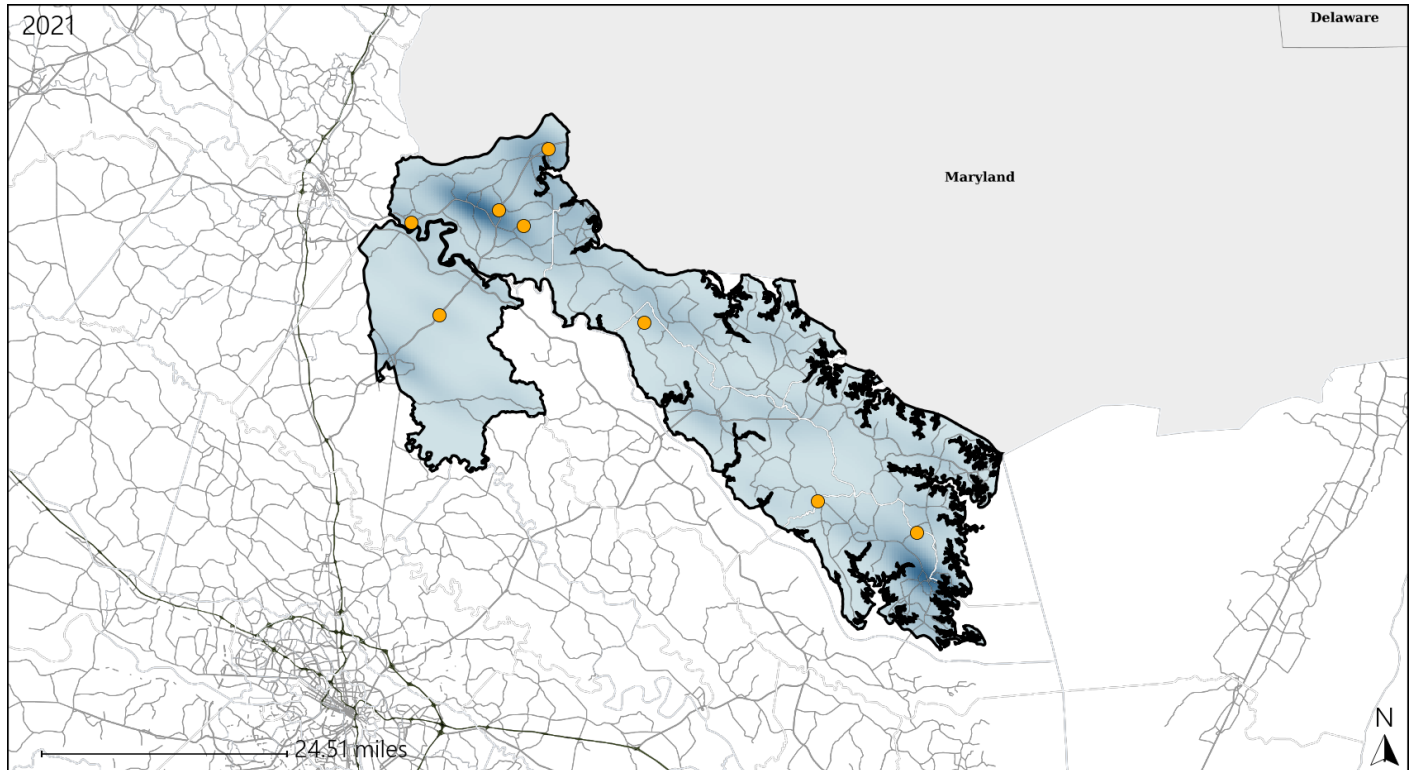


Available Crash Data - Calendar Year (CY)	CY 2018	CY 2019	CY 2020	CY 2021
Total Crashes	961	987	813	942
Fatal Crashes	14	15	18	20
Injury Crashes	312	313	232	256
Pedestrian-Related Fatal Crashes	1	1	0	1
Percent of Pedestrian-Related Fatal Crashes to Total Fatal Crashes	7%	7%	0%	5%
Pedestrian-Related Injury Crashes	8	7	3	4
Percent of Pedestrian-Related Injury Crashes to Total Injury Crashes	3%	2%	1%	2%

Virginia House District 99 Distracted Driving Crash Statistics

Report Generated April, 2022

	Count	Highest Time Period(s)	Highest Day(s)	Highest Month(s)
Fatal Crashes	0	-	-	-
Resulting Fatalities	0			
Serious Injury Crashes	8	3:00pm - 5:59pm (38%)	Sunday (38%)	October • September (50%)



House District 99 Distracted Driving-Related Crashes

Interstate Crashes

Non-interstate Crashes

- Fatal
- Serious Injury

- Fatal
- Serious Injury

The blue gradient represents the density of all distracted driving-related crashes.



Available Crash Data - Calendar Year (CY)	CY 2018	CY 2019	CY 2020	CY 2021
Total Crashes	961	987	813	942
Fatal Crashes	14	15	18	20
Injury Crashes	312	313	232	256
Distracted Driving-Related Fatal Crashes	4	1	1	0
Percent of Distracted Driving-Related Fatal Crashes to Total Fatal Crashes	29%	7%	6%	0%
Distracted Driving-Related Injury Crashes	71	72	43	53
Percent of Distracted Driving-Related Injury Crashes to Total Injury Crashes	23%	23%	19%	21%