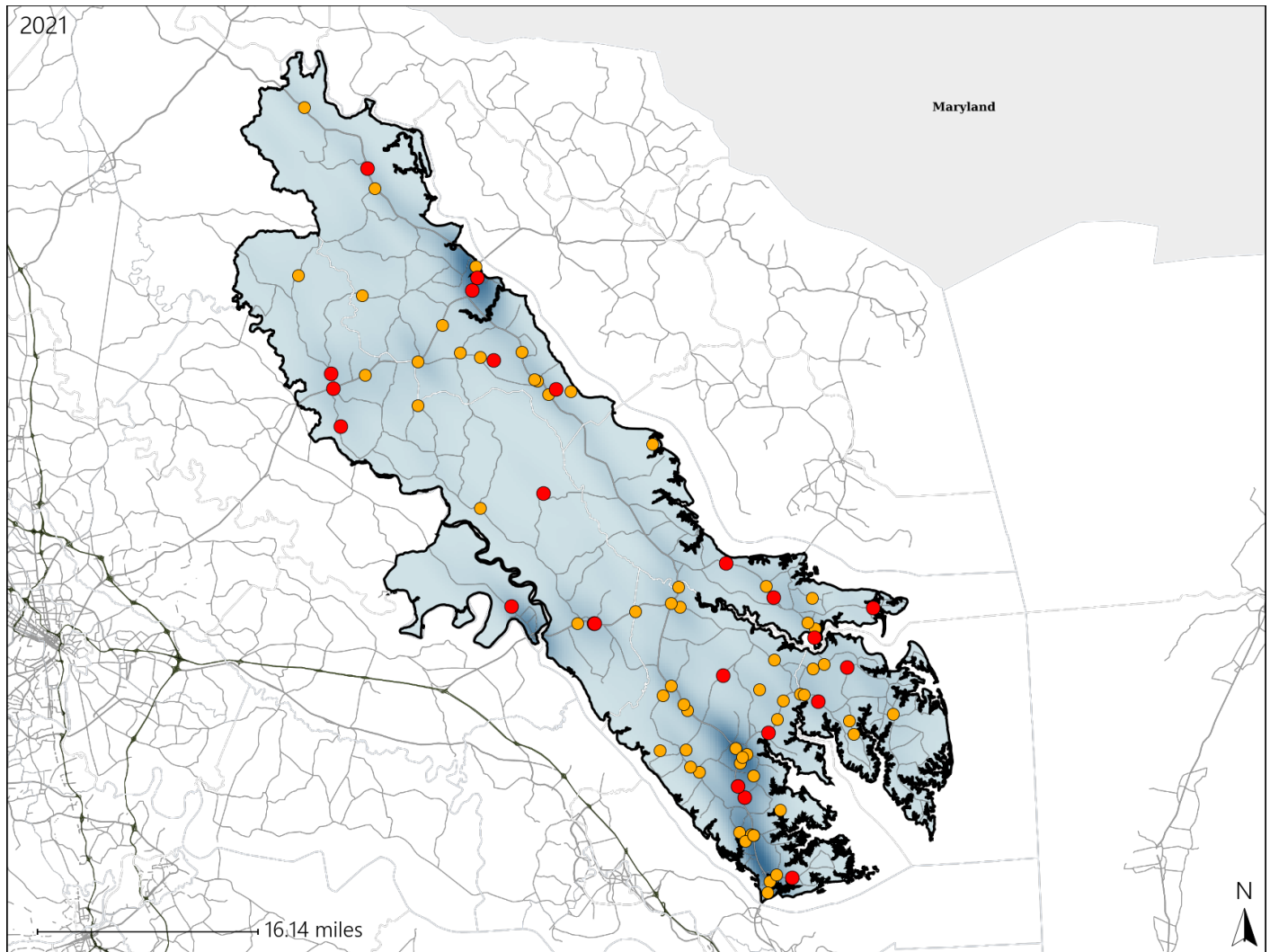


Report of Crashes for January 1st - December 31st, 2021

Virginia House District 98 Crash Statistics

Report Generated April, 2022

	Count	Highest Time Period(s)	Highest Day(s)	Highest Month(s)
Fatal Crashes	23	Noon - 2:59pm (30%)	Saturday (30%)	April • February (26%)
Resulting Fatalities	23			
Serious Injury Crashes	62	3:00pm - 5:59pm (29%)	Friday • Saturday (38%)	May (19%)



House District 98 Crashes

Interstate Crashes

- Fatal
- Serious Injury

Non-interstate Crashes

- Fatal
- Serious Injury

The blue gradient represents the density of all crashes.

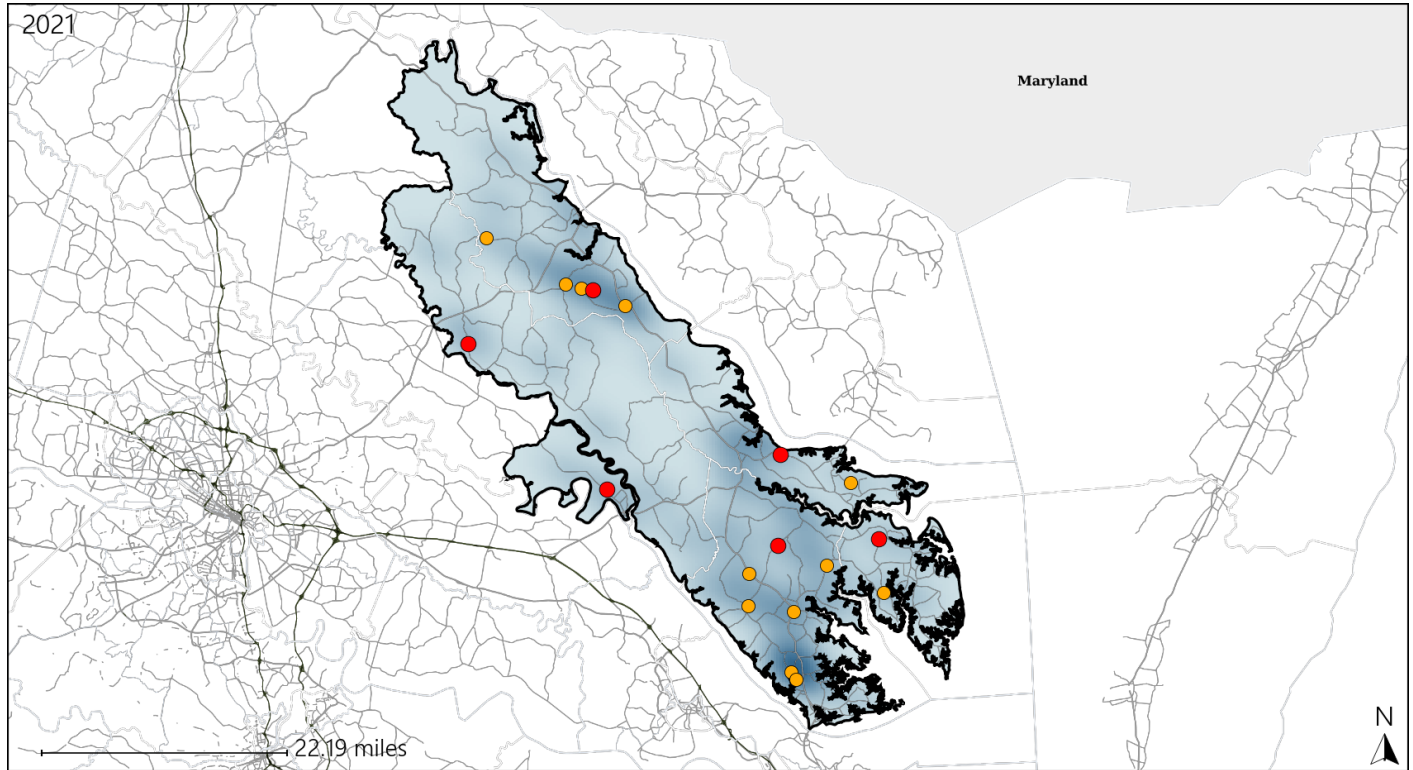


Available Crash Data - Calendar Year (CY)	CY 2018	CY 2019	CY 2020	CY 2021
Total Crashes	1043	1058	901	1021
Fatal Crashes	11	10	16	23
Injury Crashes	367	382	325	341

Virginia House District 98 Alcohol Crash Statistics

Report Generated April, 2022

	Count	Highest Time Period(s)	Highest Day(s)	Highest Month(s)
Fatal Crashes	6	6:00pm - 8:59pm	Saturday	April • February
Resulting Fatalities	6	Midnight - 2:59am (66%)	(33%)	(66%)
Serious Injury Crashes	12	9:00pm - 11:59pm (50%)	Friday • Monday (50%)	May (42%)



House District 98 Alcohol-Related Crashes

Interstate Crashes

Non-interstate Crashes

- Fatal
- Serious Injury

- Fatal
- Serious Injury

The blue gradient represents the density of all alcohol-related crashes.



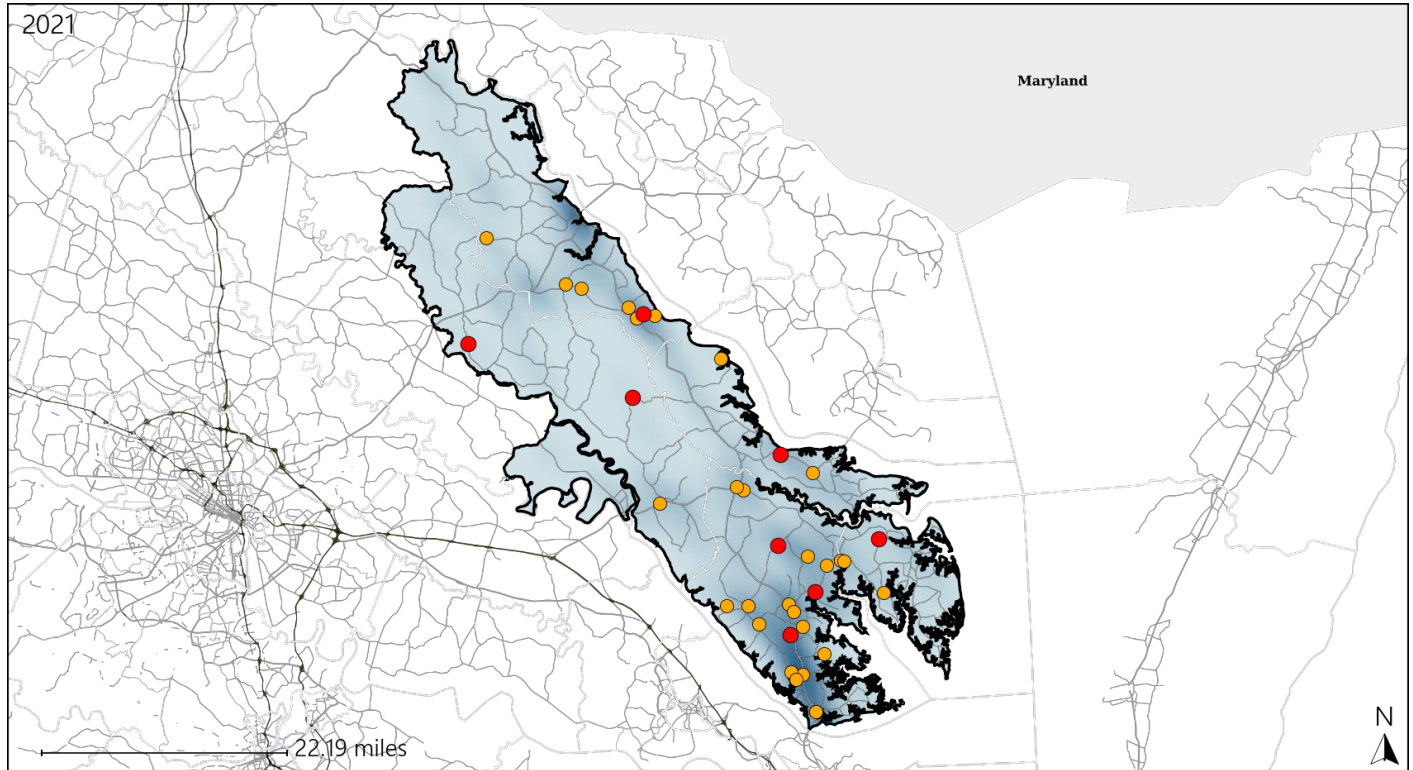
Available Crash Data - Calendar Year (CY)	CY 2018	CY 2019	CY 2020	CY 2021
Total Crashes	1043	1058	901	1021
Fatal Crashes	11	10	16	23
Injury Crashes	367	382	325	341
Alcohol-Related Fatal Crashes	3	3	2	6
Percent of Alcohol-Related Fatal Crashes to Total Fatal Crashes	27%	30%	13%	26%
Alcohol-Related Injury Crashes	32	34	30	30
Percent of Alcohol-Related Injury Crashes to Total Injury Crashes	9%	9%	9%	9%

Report of Crashes for January 1st - December 31st, 2021

Virginia House District 98 Speed Crash Statistics

Report Generated April, 2022

	Count	Highest Time Period(s)	Highest Day(s)	Highest Month(s)
Fatal Crashes	8	3:00pm - 5:59pm	Friday • Saturday	October
Resulting Fatalities	8	Noon - 2:59pm (50%)	(50%)	(25%)
Serious Injury Crashes	28	9:00pm - 11:59pm (32%)	Friday • Sunday (50%)	May (32%)



House District 98 Speed-Related Crashes

Interstate Crashes

Non-interstate Crashes

● Fatal

● Fatal

● Serious Injury

● Serious Injury

The blue gradient represents the density of all speed-related crashes.



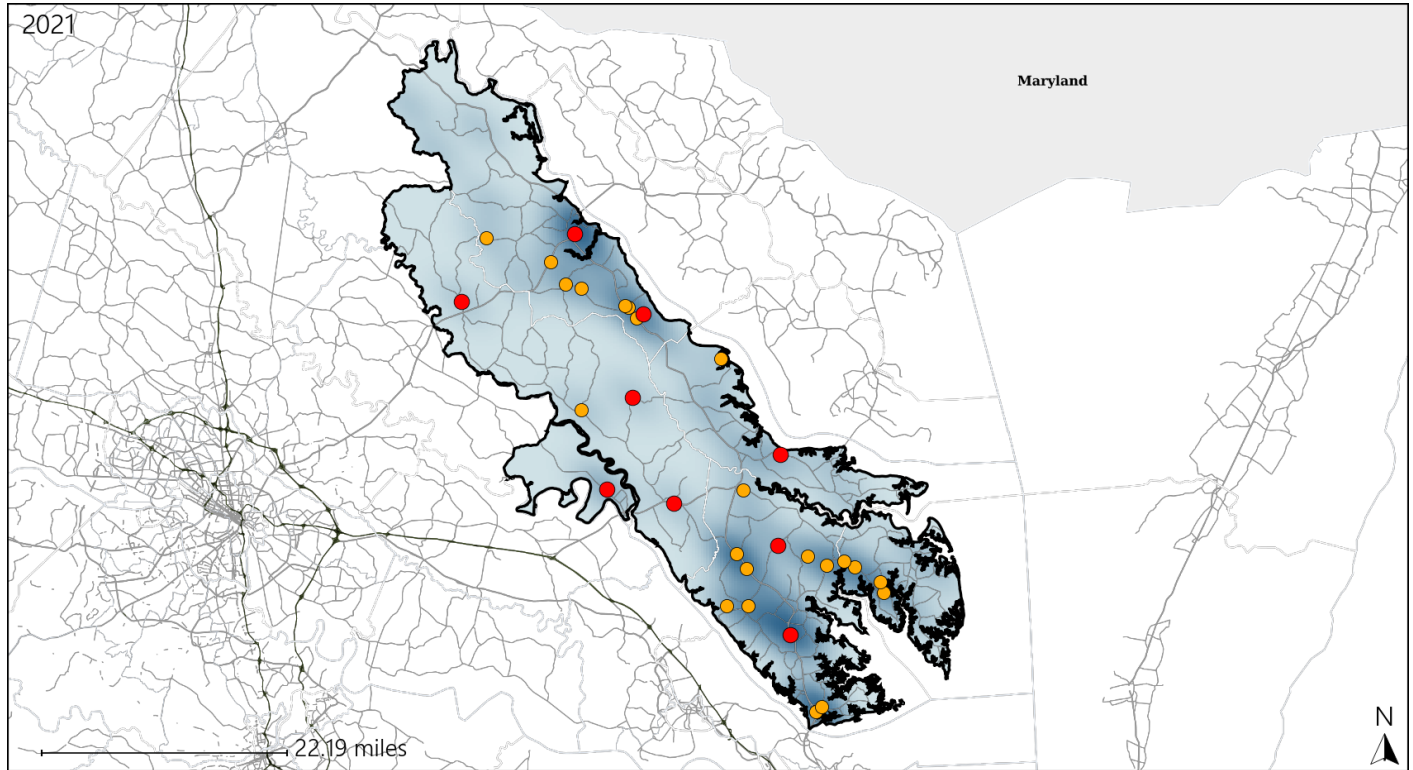
Available Crash Data - Calendar Year (CY)	CY 2018	CY 2019	CY 2020	CY 2021
Total Crashes	1043	1058	901	1021
Fatal Crashes	11	10	16	23
Injury Crashes	367	382	325	341
Speed-Related Fatal Crashes	4	6	8	8
Percent of Speed-Related Fatal Crashes to Total Fatal Crashes	36%	60%	50%	35%
Speed-Related Injury Crashes	104	92	77	91
Percent of Speed-Related Injury Crashes to Total Injury Crashes	28%	24%	24%	27%

Report of Crashes for January 1st - December 31st, 2021

Virginia House District 98 Unrestrained Crash Statistics

Report Generated April, 2022

	Count	Highest Time Period(s)	Highest Day(s)	Highest Month(s)
Fatal Crashes	9	3:00pm - 5:59pm	Monday	February • October
Unrestrained Fatalities	9	6:00pm - 8:59pm (44%)	(33%)	(44%)
Serious Injury Crashes	22	9:00pm - 11:59pm (23%)	Sunday (23%)	May (27%)



House District 98 Unrestrained-Related Crashes

Interstate Crashes

Non-interstate Crashes

- Fatal
- Serious Injury

- Fatal
- Serious Injury

The blue gradient represents the density of all unrestrained-related crashes.



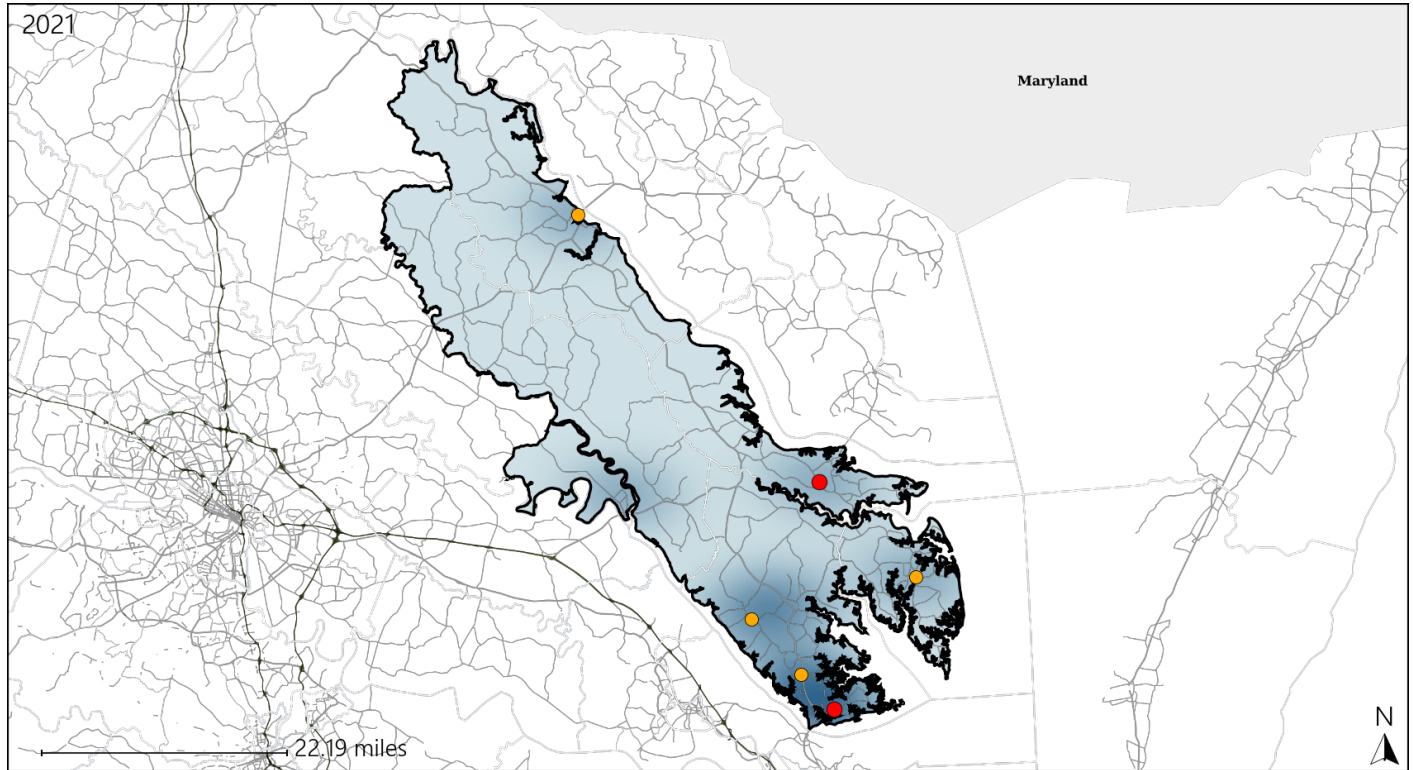
Available Crash Data - Calendar Year (CY)	CY 2018	CY 2019	CY 2020	CY 2021
Total Crashes	1043	1058	901	1021
Fatalities	11	10	17	23
Injuries	527	586	468	496
Unrestrained Fatalities	5	3	7	9
Percent of Unrestrained Fatalities to Total Fatalities	45%	30%	41%	39%
Unrestrained Injuries	71	44	57	75
Percent of Unrestrained Injuries to Total Injuries	13%	8%	12%	15%

Report of Crashes for January 1st - December 31st, 2021

Virginia House District 98 Pedestrian Crash Statistics

Report Generated April, 2022

	Count	Highest Time Period(s)	Highest Day(s)	Highest Month(s)
Fatal Crashes	2	3:00pm - 5:59pm	Saturday	August • December
Pedestrian Fatalities	2	6:00pm - 8:59pm (100%)	(100%)	(100%)
Serious Injury Crashes	4	3:00pm - 5:59pm (50%)	Saturday (50%)	January (50%)



House District 98 Pedestrian-Related Crashes

Interstate Crashes

Non-interstate Crashes

● Fatal

● Fatal

● Serious Injury

● Serious Injury

The blue gradient represents the density of all pedestrian-related crashes.



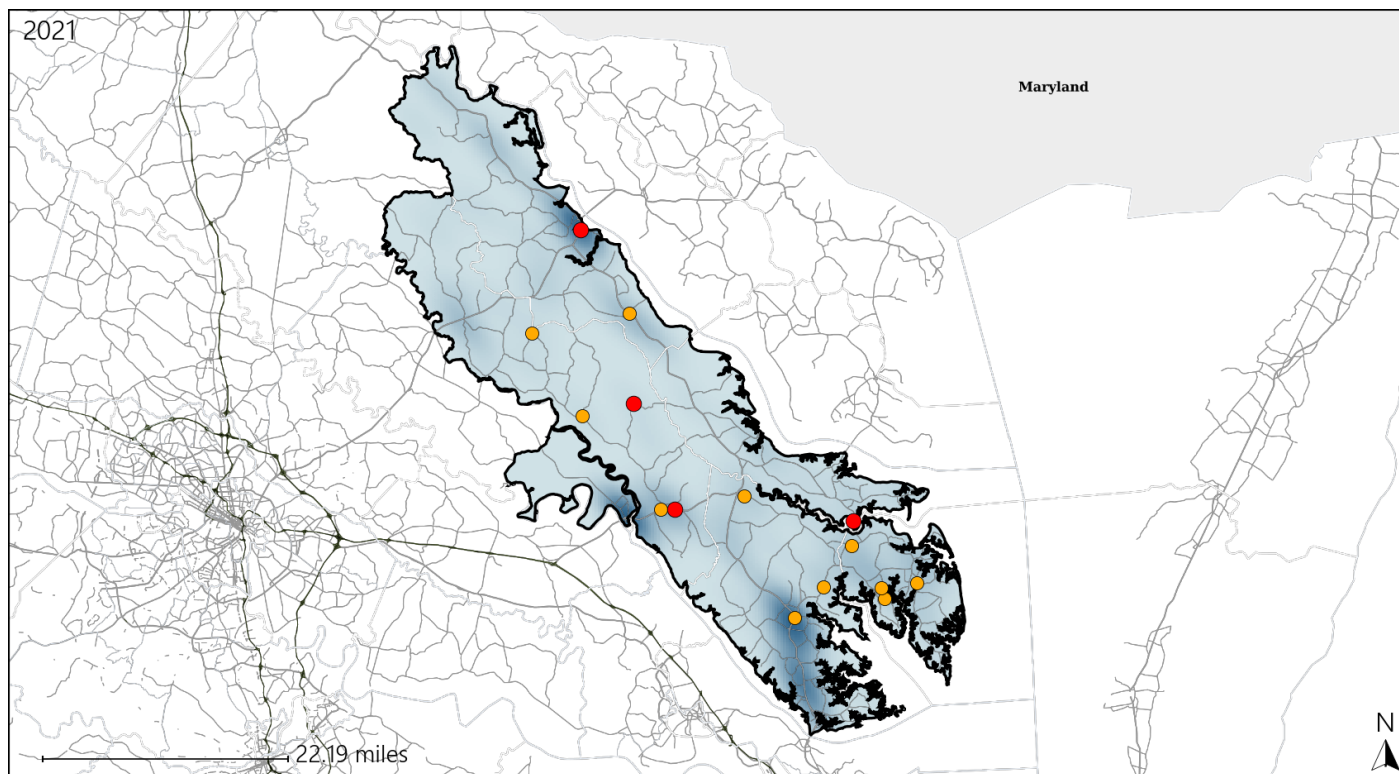
Available Crash Data - Calendar Year (CY)	CY 2018	CY 2019	CY 2020	CY 2021
Total Crashes	1043	1058	901	1021
Fatal Crashes	11	10	16	23
Injury Crashes	367	382	325	341
Pedestrian-Related Fatal Crashes	1	1	0	2
Percent of Pedestrian-Related Fatal Crashes to Total Fatal Crashes	9%	10%	0%	9%
Pedestrian-Related Injury Crashes	7	10	3	7
Percent of Pedestrian-Related Injury Crashes to Total Injury Crashes	2%	3%	1%	2%

Report of Crashes for January 1st - December 31st, 2021

Virginia House District 98 Distracted Driving Crash Statistics

Report Generated April, 2022

	Count	Highest Time Period(s)	Highest Day(s)	Highest Month(s)
Fatal Crashes	4	9:00am - 11:59am	Friday • Monday	February • July
Resulting Fatalities	4	(50%)	(50%)	(50%)
Serious Injury Crashes	11	6:00am - 8:59am 9:00pm - 11:59pm	Friday	January • July
		(54%)	(27%)	(36%)



House District 98 Distracted Driving-Related Crashes

Interstate Crashes

Non-interstate Crashes

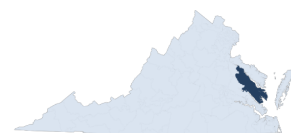
● Fatal

● Fatal

⊕ Serious Injury

⊕ Serious Injury

The blue gradient represents the density of all distracted driving-related crashes.



Available Crash Data - Calendar Year (CY)	CY 2018	CY 2019	CY 2020	CY 2021
Total Crashes	1043	1058	901	1021
Fatal Crashes	11	10	16	23
Injury Crashes	367	382	325	341
Distracted Driving-Related Fatal Crashes	4	1	3	4
Percent of Distracted Driving-Related Fatal Crashes to Total Fatal Crashes	36%	10%	19%	17%
Distracted Driving-Related Injury Crashes	76	80	68	57
Percent of Distracted Driving-Related Injury Crashes to Total Injury Crashes	21%	21%	21%	17%