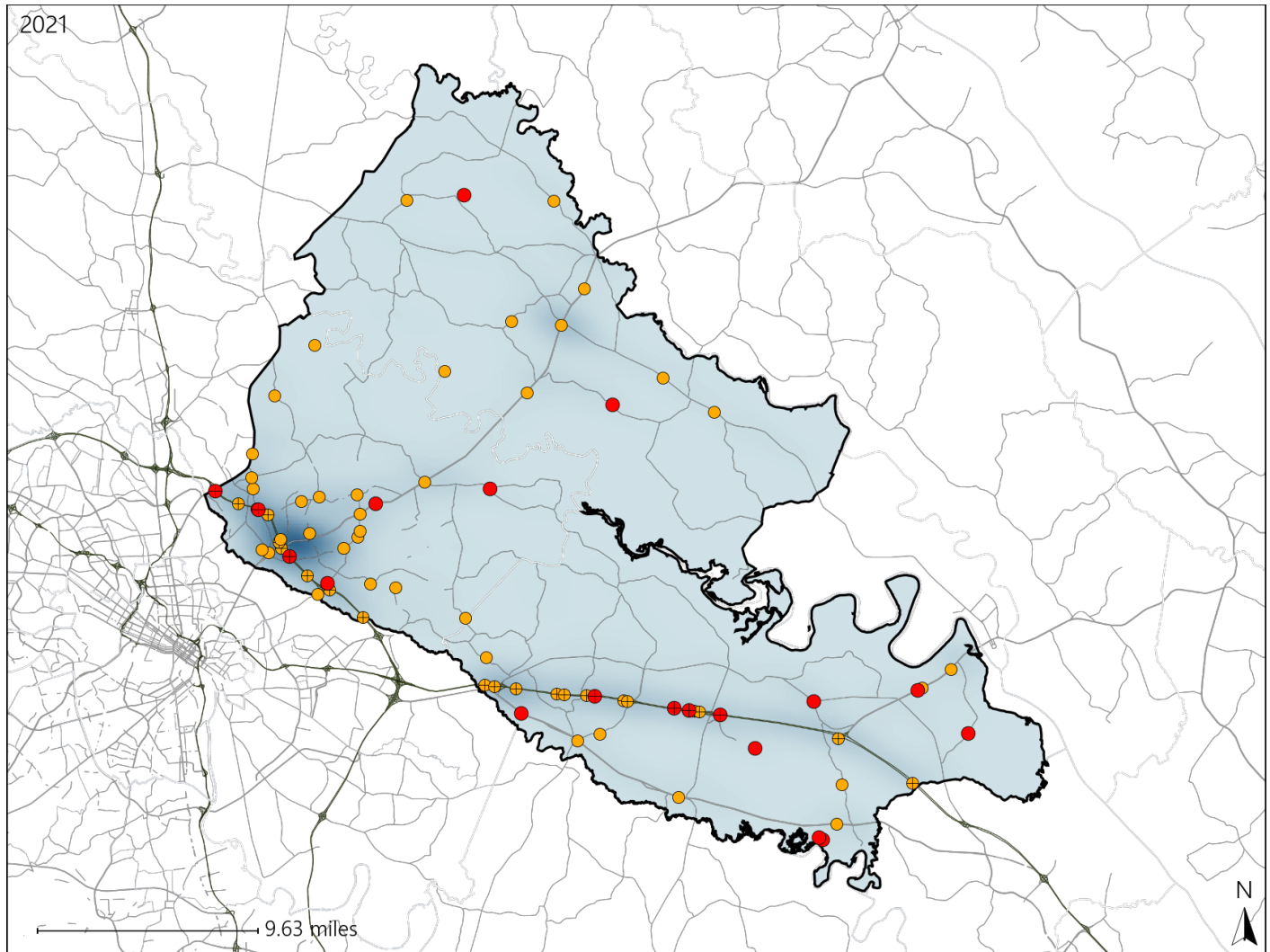


Virginia House District 97 Crash Statistics

Report Generated April, 2022

| | Count | Highest Time Period(s) | Highest Day(s) | Highest Month(s) |
|-------------------------------|-----------|--------------------------|-------------------|--------------------------|
| Fatal Crashes | 19 | 9:00am - 11:59am | Friday • Monday | November |
| Resulting Fatalities | 23 | Noon - 2:59pm (52%) | (42%) | (16%) |
| Serious Injury Crashes | 58 | 3:00pm - 5:59pm (19%) | Saturday (19%) | February • July (24%) |



House District 97 Crashes

Interstate Crashes

- Fatal
- Serious Injury

Non-interstate Crashes

- Fatal
- Serious Injury

The blue gradient represents the density of all crashes.



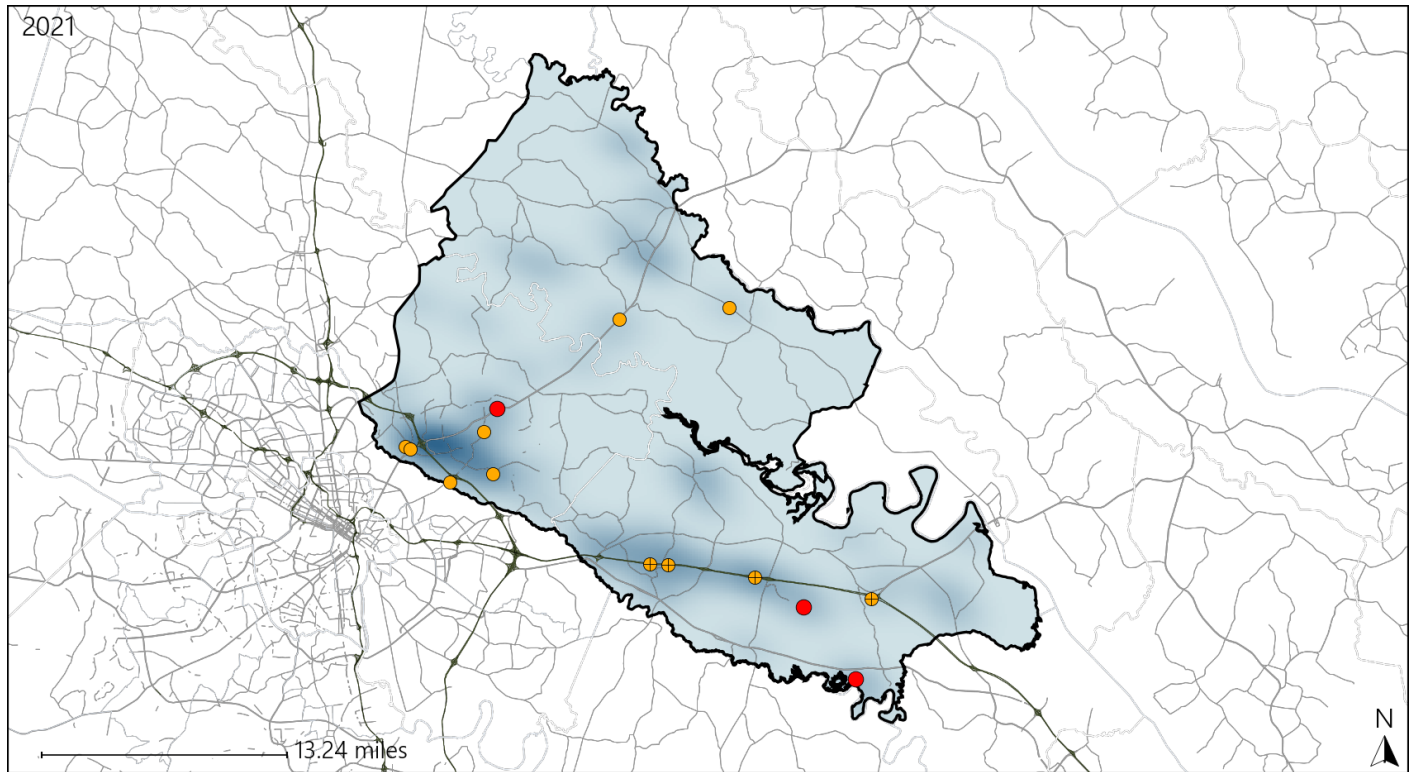
| Available Crash Data - Calendar Year (CY) | CY 2018 | CY 2019 | CY 2020 | CY 2021 |
|---|---------|---------|---------|---------|
| Total Crashes | 1605 | 1553 | 1334 | 1359 |
| Fatal Crashes | 12 | 9 | 18 | 19 |
| Injury Crashes | 449 | 405 | 339 | 361 |

Report of Crashes for January 1st - December 31st, 2021

Virginia House District 97 Alcohol Crash Statistics

Report Generated April, 2022

| | Count | Highest Time Period(s) | Highest Day(s) | Highest Month(s) |
|-------------------------------|-----------|--|--------------------------|------------------------|
| Fatal Crashes | 3 | 9:00pm - 11:59pm | Saturday • Sunday | January • March |
| Resulting Fatalities | 3 | (67%) | (66%) | (66%) |
| Serious Injury Crashes | 11 | 6:00pm - 8:59pm Midnight - 2:59am | Saturday | December |
| | | (54%) | (45%) | (36%) |



House District 97 Alcohol-Related Crashes

Interstate Crashes

Non-interstate Crashes

● Fatal

● Fatal

⊕ Serious Injury

⊕ Serious Injury

The blue gradient represents the density of all alcohol-related crashes.

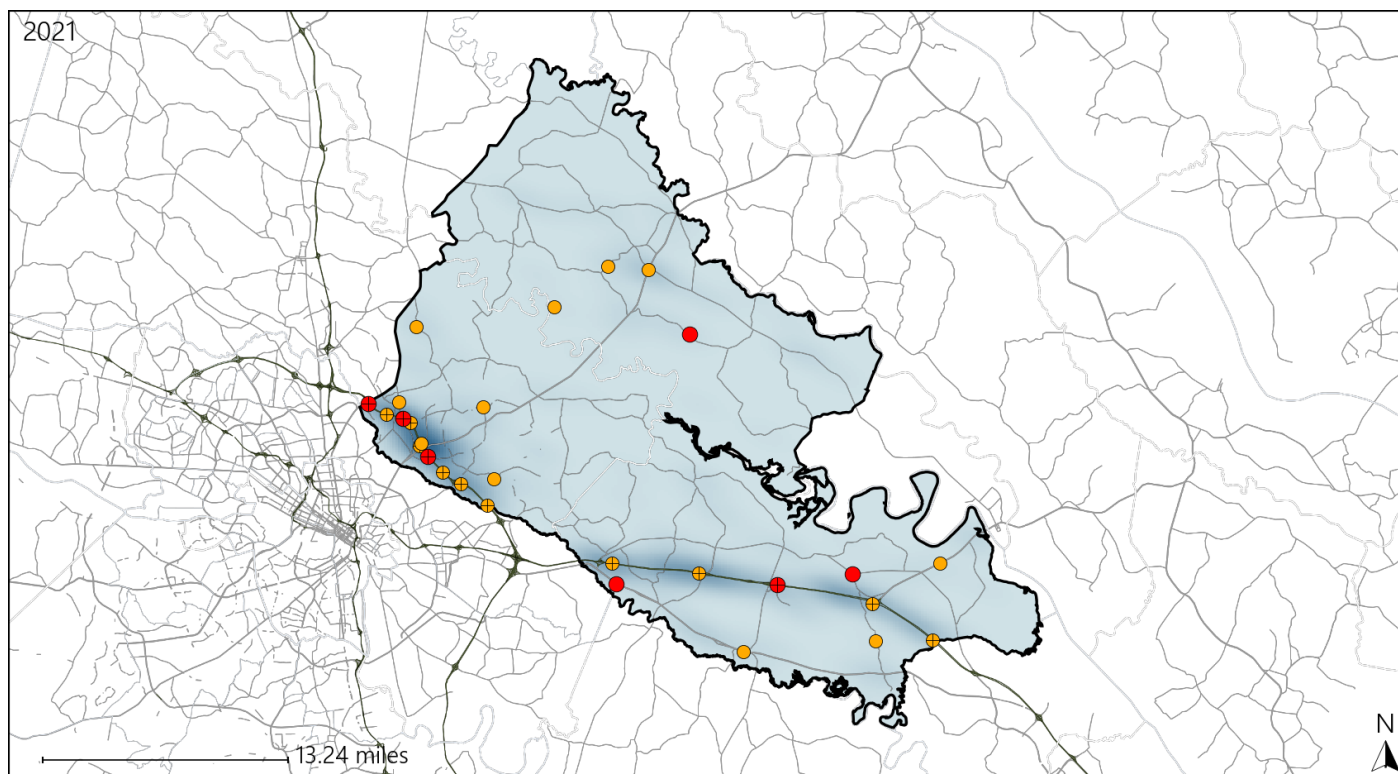


| Available Crash Data - Calendar Year (CY) | CY 2018 | CY 2019 | CY 2020 | CY 2021 |
|---|---------|---------|---------|---------|
| Total Crashes | 1605 | 1553 | 1334 | 1359 |
| Fatal Crashes | 12 | 9 | 18 | 19 |
| Injury Crashes | 449 | 405 | 339 | 361 |
| Alcohol-Related Fatal Crashes | 4 | 2 | 4 | 3 |
| Percent of Alcohol-Related Fatal Crashes to Total Fatal Crashes | 33% | 22% | 22% | 16% |
| Alcohol-Related Injury Crashes | 36 | 33 | 25 | 32 |
| Percent of Alcohol-Related Injury Crashes to Total Injury Crashes | 8% | 8% | 7% | 9% |

Virginia House District 97 Speed Crash Statistics

Report Generated April, 2022

| | Count | Highest Time Period(s) | Highest Day(s) | Highest Month(s) |
|-------------------------------|-----------|---|-----------------|----------------------------|
| Fatal Crashes | 7 | 9:00am - 11:59am | Monday | April |
| Resulting Fatalities | 10 | Noon - 2:59pm (86%) | (57%) | (29%) |
| Serious Injury Crashes | 22 | 3:00pm - 5:59pm Noon - 2:59pm (36%) | Friday (23%) | August • February (28%) |



House District 97 Speed-Related Crashes

Interstate Crashes

● Fatal

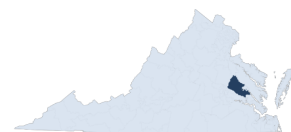
⊕ Serious Injury

Non-interstate Crashes

● Fatal

● Serious Injury

The blue gradient represents the density of all speed-related crashes.

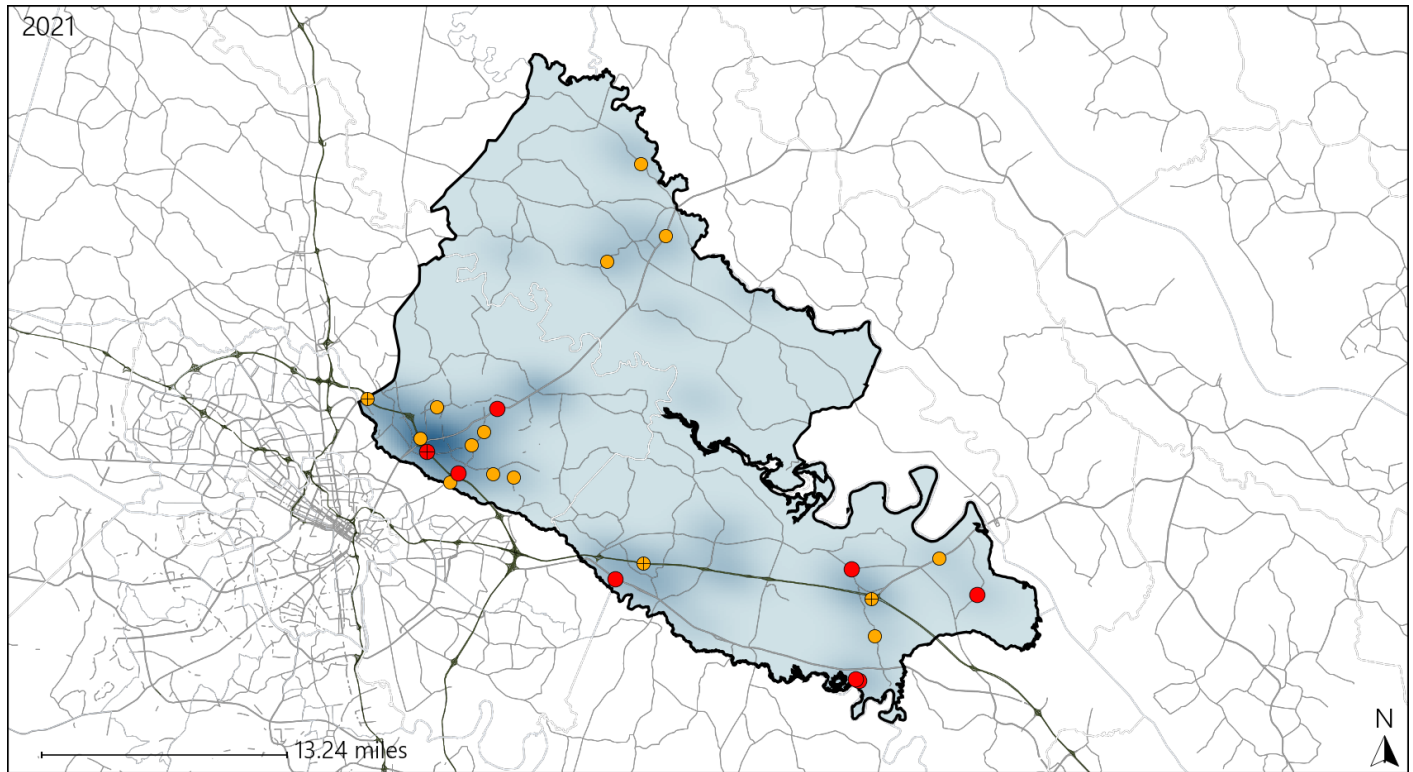


| Available Crash Data - Calendar Year (CY) | CY 2018 | CY 2019 | CY 2020 | CY 2021 |
|---|---------|---------|---------|---------|
| Total Crashes | 1605 | 1553 | 1334 | 1359 |
| Fatal Crashes | 12 | 9 | 18 | 19 |
| Injury Crashes | 449 | 405 | 339 | 361 |
| Speed-Related Fatal Crashes | 5 | 4 | 2 | 7 |
| Percent of Speed-Related Fatal Crashes to Total Fatal Crashes | 42% | 44% | 11% | 37% |
| Speed-Related Injury Crashes | 118 | 100 | 95 | 106 |
| Percent of Speed-Related Injury Crashes to Total Injury Crashes | 26% | 25% | 28% | 29% |

Virginia House District 97 Unrestrained Crash Statistics

Report Generated April, 2022

| | Count | Highest Time Period(s) | Highest Day(s) | Highest Month(s) |
|--------------------------------|-----------|-------------------------|----------------------------|-------------------------|
| Fatal Crashes | 8 | 9:00pm - 11:59pm | Saturday • Thursday | April • February |
| Unrestrained Fatalities | 9 | (38%) | (50%) | (50%) |
| Serious Injury Crashes | 15 | 6:00am - 8:59am | Saturday | July • September |
| | | 9:00am - 11:59am | (27%) | (40%) |
| | | (40%) | | |



House District 97 Unrestrained-Related Crashes

Interstate Crashes

Non-interstate Crashes

● Fatal

● Fatal

⊕ Serious Injury

⊕ Serious Injury

The blue gradient represents the density of all unrestrained-related crashes.

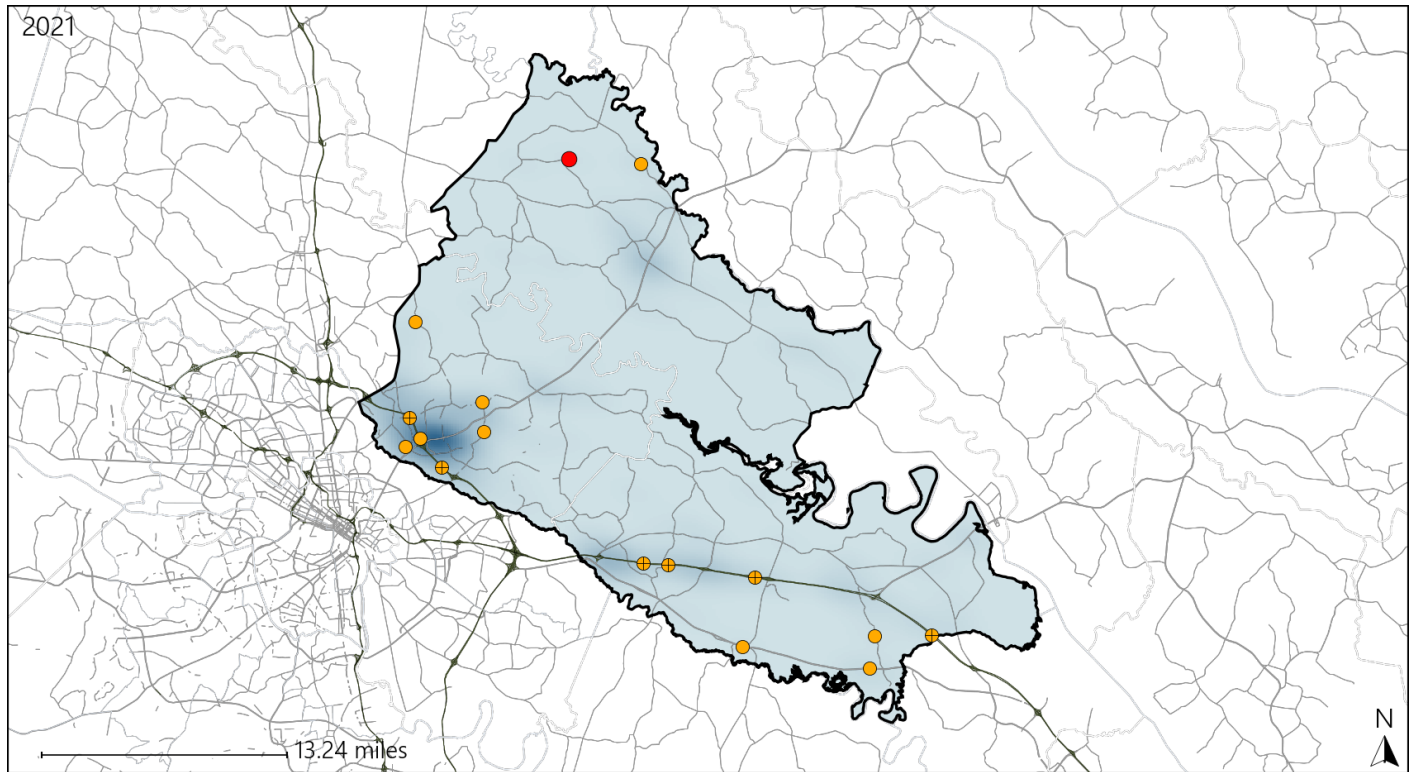


| Available Crash Data - Calendar Year (CY) | CY 2018 | CY 2019 | CY 2020 | CY 2021 |
|--|---------|---------|---------|---------|
| Total Crashes | 1605 | 1553 | 1334 | 1359 |
| Fatalities | 12 | 9 | 19 | 23 |
| Injuries | 721 | 626 | 490 | 539 |
| Unrestrained Fatalities | 2 | 5 | 4 | 9 |
| Percent of Unrestrained Fatalities to Total Fatalities | 17% | 56% | 21% | 39% |
| Unrestrained Injuries | 75 | 57 | 46 | 58 |
| Percent of Unrestrained Injuries to Total Injuries | 10% | 9% | 9% | 11% |

Virginia House District 97 Distracted Driving Crash Statistics

Report Generated April, 2022

| | Count | Highest Time Period(s) | Highest Day(s) | Highest Month(s) |
|-------------------------------|-----------|------------------------------------|----------------|-------------------|
| Fatal Crashes | 1 | Noon - 2:59pm | Friday | November |
| Resulting Fatalities | 1 | (100%) | (100%) | (100%) |
| Serious Injury Crashes | 15 | 6:00am - 8:59am 6:00pm - 8:59pm | Wednesday | August • February |
| | | (40%) | (27%) | (40%) |



House District 97 Distracted Driving-Related Crashes

Interstate Crashes

Non-interstate Crashes

● Fatal

● Fatal

⊕ Serious Injury

⊕ Serious Injury

The blue gradient represents the density of all distracted driving-related crashes.



| Available Crash Data - Calendar Year (CY) | CY 2018 | CY 2019 | CY 2020 | CY 2021 |
|--|---------|---------|---------|---------|
| Total Crashes | 1605 | 1553 | 1334 | 1359 |
| Fatal Crashes | 12 | 9 | 18 | 19 |
| Injury Crashes | 449 | 405 | 339 | 361 |
| Distracted Driving-Related Fatal Crashes | 3 | 1 | 2 | 1 |
| Percent of Distracted Driving-Related Fatal Crashes to Total Fatal Crashes | 25% | 11% | 11% | 5% |
| Distracted Driving-Related Injury Crashes | 106 | 95 | 94 | 85 |
| Percent of Distracted Driving-Related Injury Crashes to Total Injury Crashes | 24% | 23% | 28% | 24% |