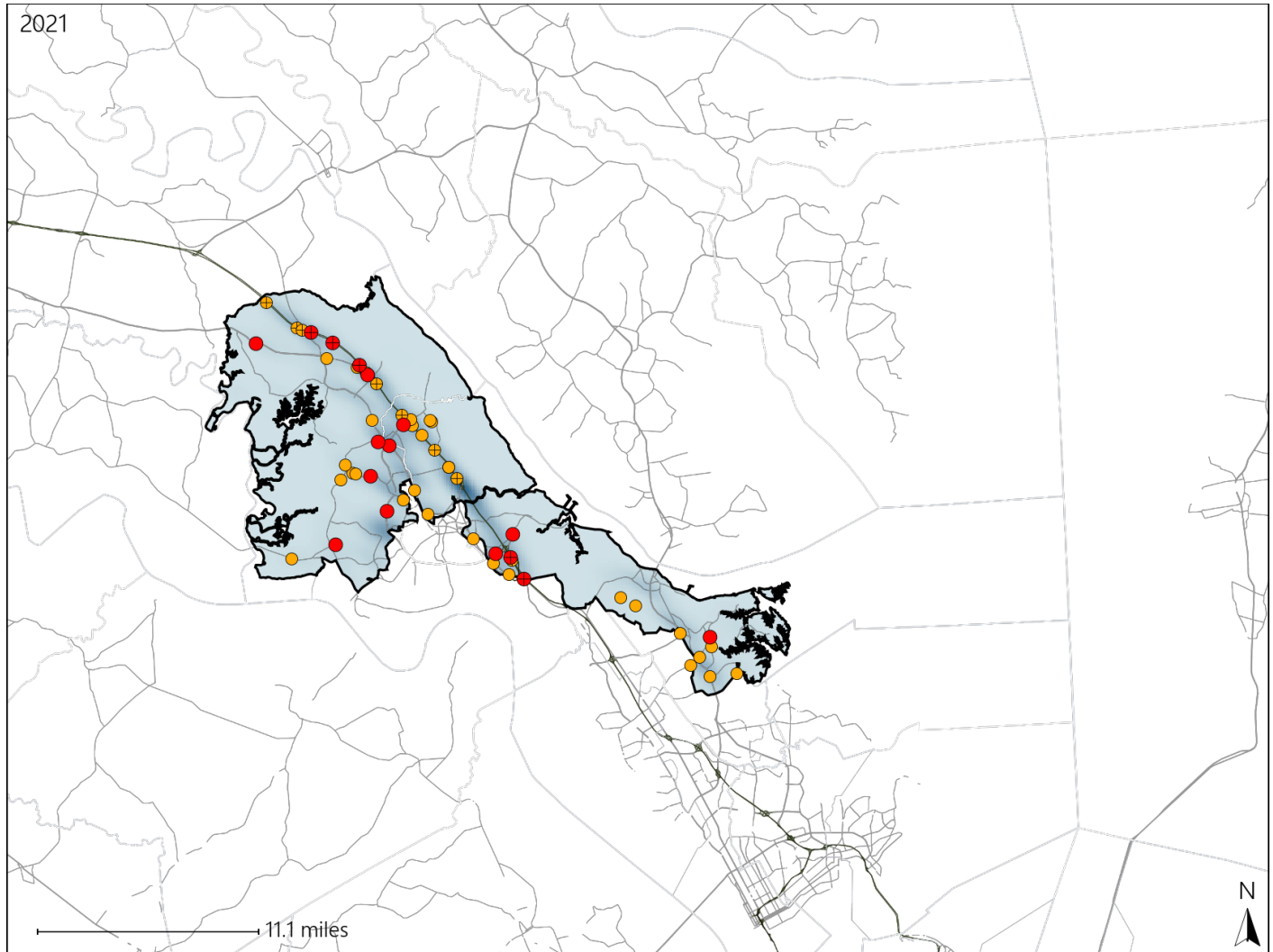


Virginia House District 96 Crash Statistics

Report Generated April, 2022

	Count	Highest Time Period(s)	Highest Day(s)	Highest Month(s)
Fatal Crashes	16	9:00pm - 11:59pm	Tuesday	December
Resulting Fatalities	17	(25%)	(31%)	(25%)
Serious Injury Crashes	38	6:00pm - 8:59pm	Monday	May
		(21%)	(21%)	(16%)



House District 96 Crashes

Interstate Crashes

- Fatal
- Serious Injury

Non-interstate Crashes

- Fatal
- Serious Injury

The blue gradient represents the density of all crashes.



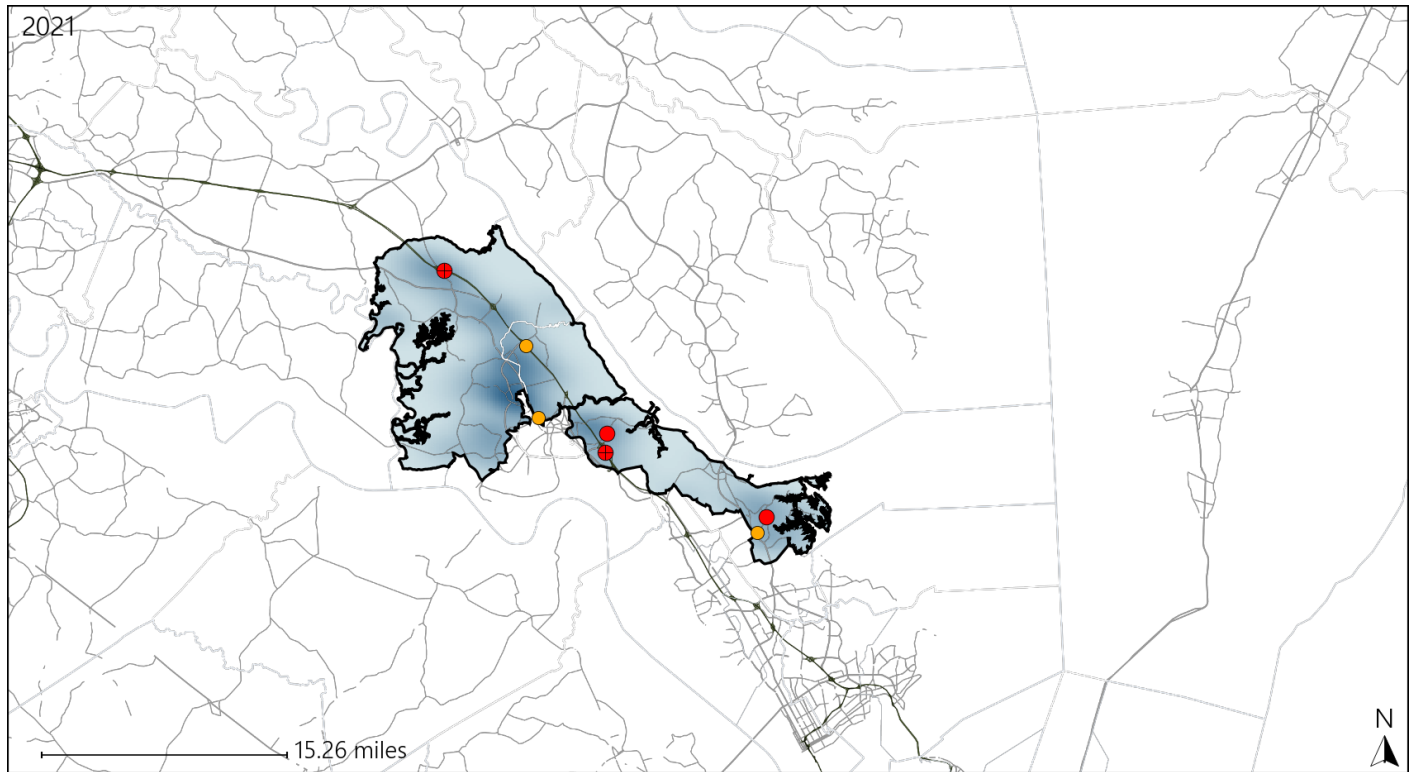
Available Crash Data - Calendar Year (CY)	CY 2018	CY 2019	CY 2020	CY 2021
Total Crashes	1527	1343	1127	1272
Fatal Crashes	6	4	11	16
Injury Crashes	608	561	428	444

Report of Crashes for January 1st - December 31st, 2021

Virginia House District 96 Alcohol Crash Statistics

Report Generated April, 2022

	Count	Highest Time Period(s)	Highest Day(s)	Highest Month(s)
Fatal Crashes	4	9:00pm - 11:59pm	Friday • Saturday	April • June
Resulting Fatalities	4	(50%)	(50%)	(50%)
Serious Injury Crashes	3	3:00am - 5:59am	Friday • Thursday	April • June
		6:00pm - 8:59pm	(66%)	(66%)



House District 96 Alcohol-Related Crashes

Interstate Crashes

Non-interstate Crashes

● Fatal

● Fatal

⊕ Serious Injury

⊕ Serious Injury

The blue gradient represents the density of all alcohol-related crashes.



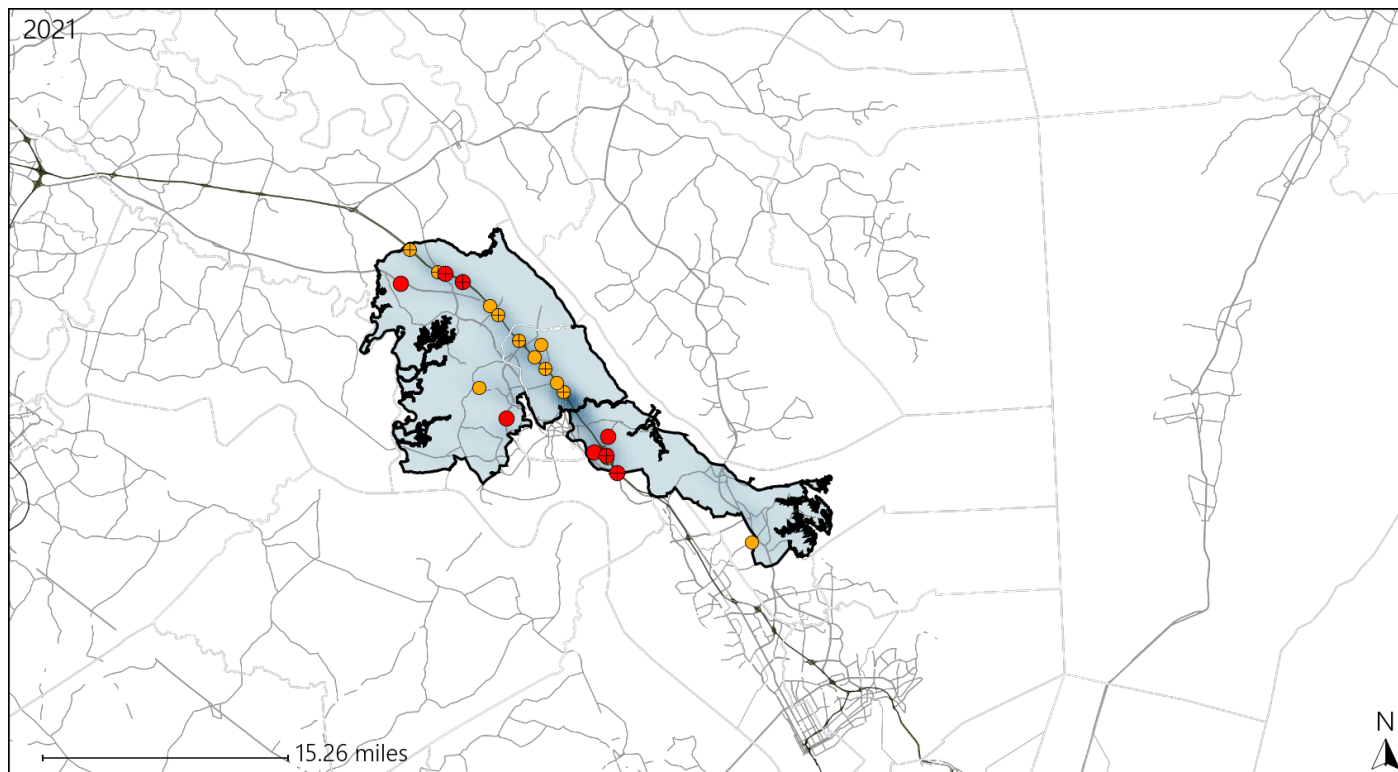
Available Crash Data - Calendar Year (CY)	CY 2018	CY 2019	CY 2020	CY 2021
Total Crashes	1527	1343	1127	1272
Fatal Crashes	6	4	11	16
Injury Crashes	608	561	428	444
Alcohol-Related Fatal Crashes	2	1	3	4
Percent of Alcohol-Related Fatal Crashes to Total Fatal Crashes	33%	25%	27%	25%
Alcohol-Related Injury Crashes	40	40	45	37
Percent of Alcohol-Related Injury Crashes to Total Injury Crashes	7%	7%	11%	8%

Report of Crashes for January 1st - December 31st, 2021

Virginia House District 96 Speed Crash Statistics

Report Generated April, 2022

	Count	Highest Time Period(s)	Highest Day(s)	Highest Month(s)
Fatal Crashes	8	9:00pm - 11:59pm	Friday	April
Resulting Fatalities	9	(38%)	(50%)	(25%)
Serious Injury Crashes	13	3:00am - 5:59am	Monday • Sunday	April • August
		(31%)	(46%)	(30%)



House District 96 Speed-Related Crashes

Interstate Crashes

Non-interstate Crashes

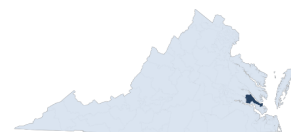
● Fatal

● Fatal

● Serious Injury

● Serious Injury

The blue gradient represents the density of all speed-related crashes.

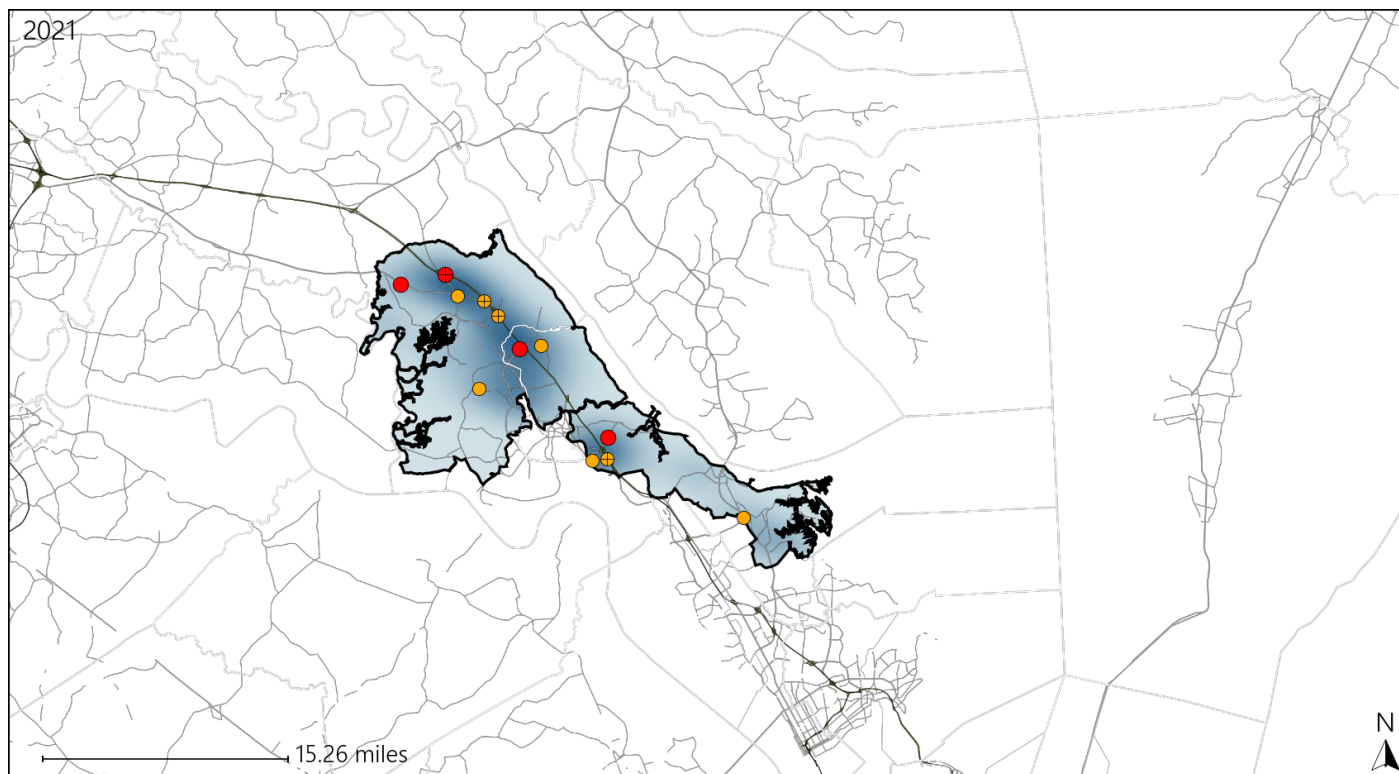


Available Crash Data - Calendar Year (CY)	CY 2018	CY 2019	CY 2020	CY 2021
Total Crashes	1527	1343	1127	1272
Fatal Crashes	6	4	11	16
Injury Crashes	608	561	428	444
Speed-Related Fatal Crashes	1	1	5	8
Percent of Speed-Related Fatal Crashes to Total Fatal Crashes	17%	25%	45%	50%
Speed-Related Injury Crashes	127	105	95	81
Percent of Speed-Related Injury Crashes to Total Injury Crashes	21%	19%	22%	18%

Virginia House District 96 Unrestrained Crash Statistics

Report Generated April, 2022

	Count	Highest Time Period(s)	Highest Day(s)	Highest Month(s)
Fatal Crashes	4	9:00pm - 11:59pm	Friday • Saturday	April
Unrestrained Fatalities	4	(75%)	(50%)	(50%)
Serious Injury Crashes	8	3:00am - 5:59am	Sunday • Tuesday	April • May
		6:00am - 8:59am	(76%)	(50%)
		(50%)		



House District 96 Unrestrained-Related Crashes

Interstate Crashes

Non-interstate Crashes

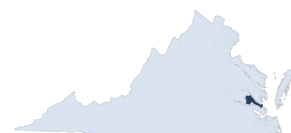
● Fatal

● Fatal

⊕ Serious Injury

⊕ Serious Injury

The blue gradient represents the density of all unrestrained-related crashes.



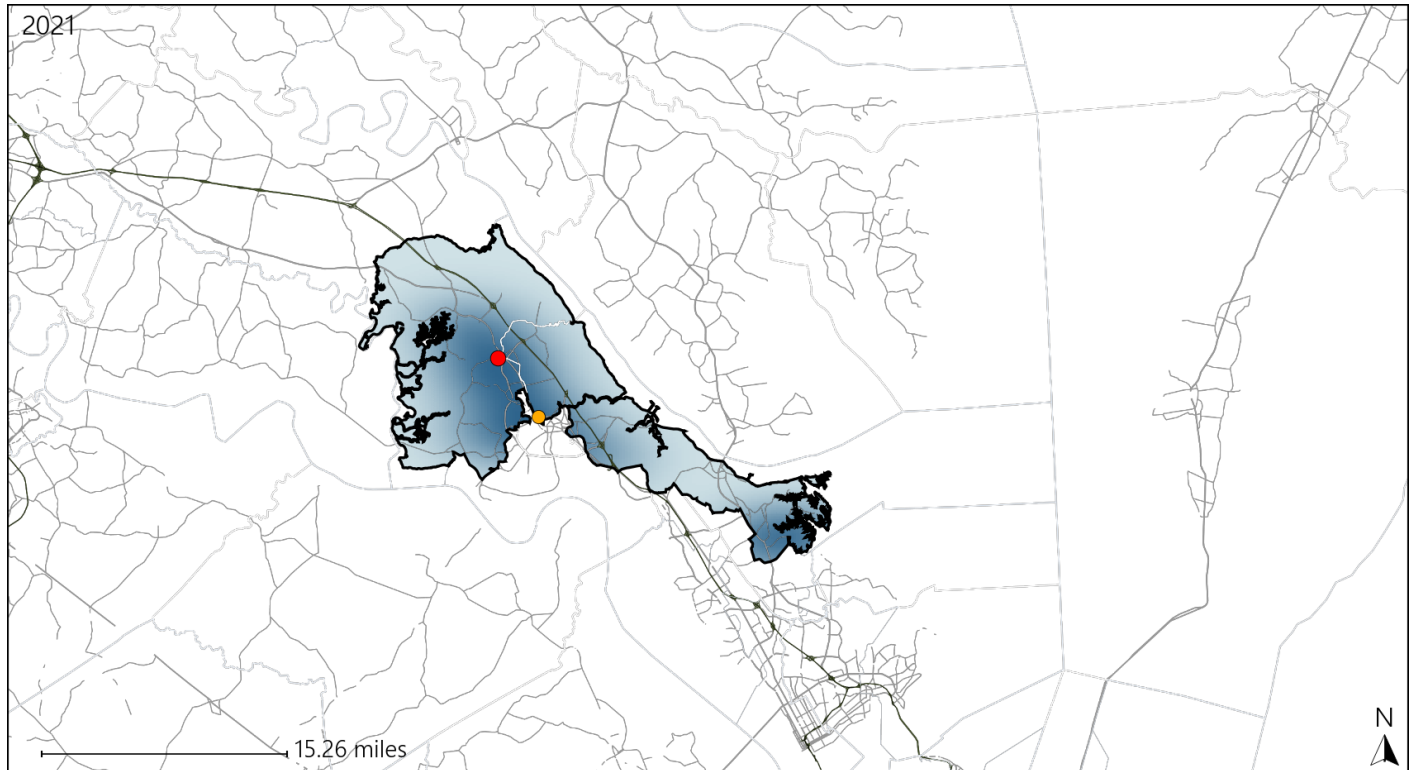
Available Crash Data - Calendar Year (CY)	CY 2018	CY 2019	CY 2020	CY 2021
Total Crashes	1527	1343	1127	1272
Fatalities	6	4	13	17
Injuries	906	928	669	733
Unrestrained Fatalities	2	1	3	4
Percent of Unrestrained Fatalities to Total Fatalities	33%	25%	23%	24%
Unrestrained Injuries	28	43	35	32
Percent of Unrestrained Injuries to Total Injuries	3%	5%	5%	4%

Report of Crashes for January 1st - December 31st, 2021

Virginia House District 96 Pedestrian Crash Statistics

Report Generated April, 2022

	Count	Highest Time Period(s)	Highest Day(s)	Highest Month(s)
Fatal Crashes	1	3:00pm - 5:59pm	Tuesday	December
Pedestrian Fatalities	1	(100%)	(100%)	(100%)
Serious Injury Crashes	1	9:00pm - 11:59pm	Friday	October
		(100%)	(100%)	(100%)



House District 96 Pedestrian-Related Crashes

Interstate Crashes

Non-interstate Crashes

- Fatal
- Serious Injury

- Fatal
- Serious Injury

The blue gradient represents the density of all pedestrian-related crashes.

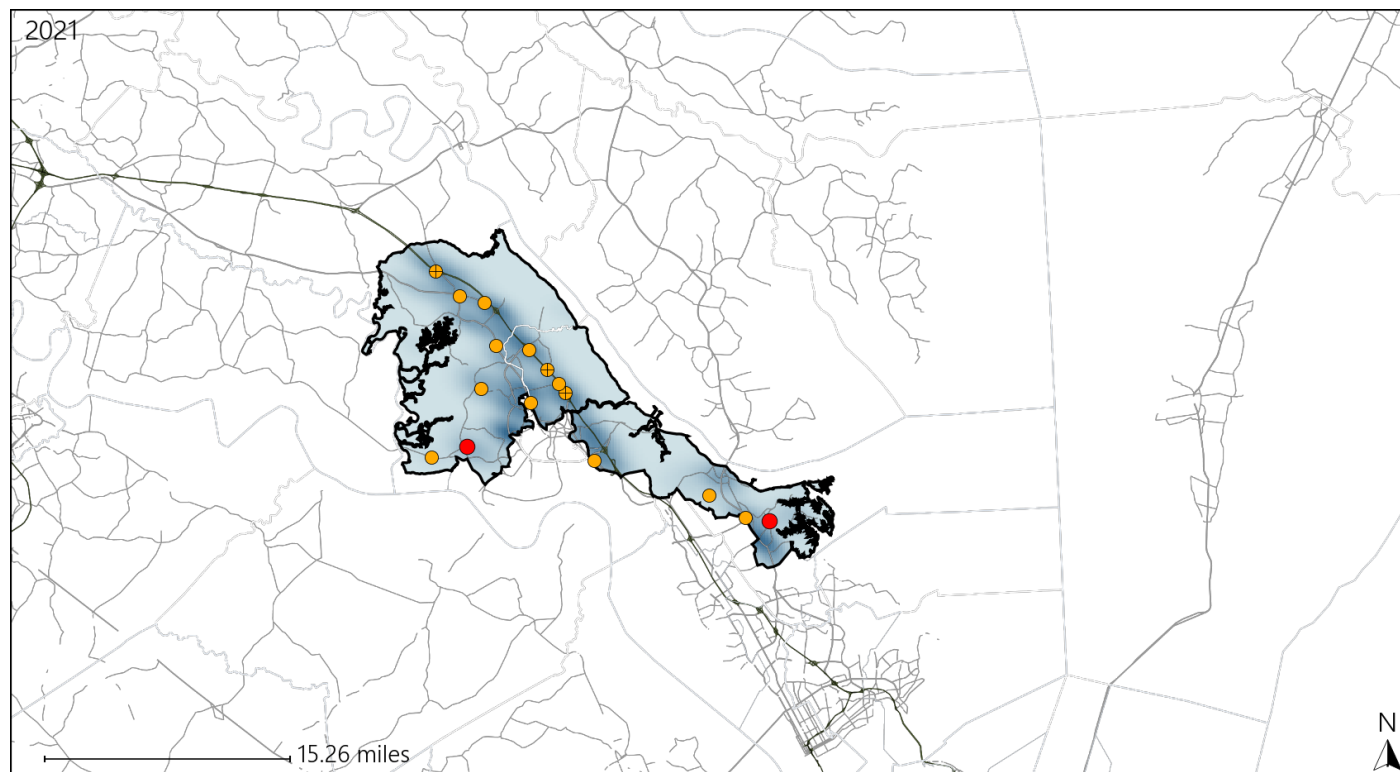


Available Crash Data - Calendar Year (CY)	CY 2018	CY 2019	CY 2020	CY 2021
Total Crashes	1527	1343	1127	1272
Fatal Crashes	6	4	11	16
Injury Crashes	608	561	428	444
Pedestrian-Related Fatal Crashes	0	1	0	1
Percent of Pedestrian-Related Fatal Crashes to Total Fatal Crashes	0%	25%	0%	6%
Pedestrian-Related Injury Crashes	9	11	7	7
Percent of Pedestrian-Related Injury Crashes to Total Injury Crashes	1%	2%	2%	2%

Virginia House District 96 Distracted Driving Crash Statistics

Report Generated April, 2022

	Count	Highest Time Period(s)	Highest Day(s)	Highest Month(s)
Fatal Crashes	2	3:00am - 5:59am	Thursday • Wednesday	December • May
Resulting Fatalities	2	6:00pm - 8:59pm (100%)	(100%)	(100%)
Serious Injury Crashes	14	3:00pm - 5:59pm (29%)	Tuesday (36%)	December • July (28%)



House District 96 Distracted Driving-Related Crashes

Interstate Crashes

- Fatal
- Serious Injury

Non-interstate Crashes

- Fatal
- Serious Injury

The blue gradient represents the density of all distracted driving-related crashes.



Available Crash Data - Calendar Year (CY)	CY 2018	CY 2019	CY 2020	CY 2021
Total Crashes	1527	1343	1127	1272
Fatal Crashes	6	4	11	16
Injury Crashes	608	561	428	444
Distracted Driving-Related Fatal Crashes	1	0	0	2
Percent of Distracted Driving-Related Fatal Crashes to Total Fatal Crashes	17%	0%	0%	13%
Distracted Driving-Related Injury Crashes	128	113	79	88
Percent of Distracted Driving-Related Injury Crashes to Total Injury Crashes	21%	20%	18%	20%