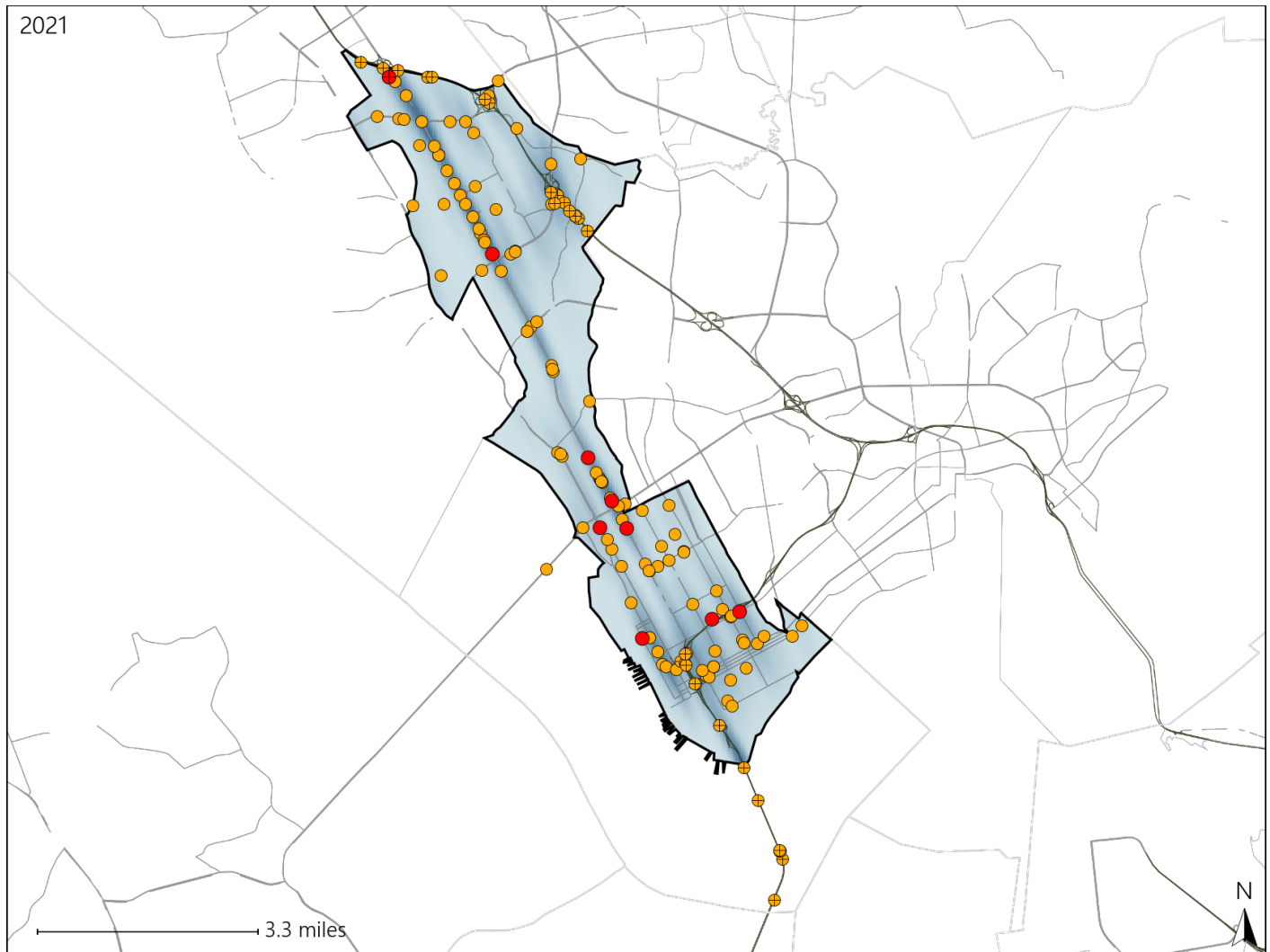


# Virginia House District 95 Crash Statistics

Report Generated April, 2022

	Count	Highest Time Period(s)	Highest Day(s)	Highest Month(s)
<b>Fatal Crashes</b>	<b>9</b>	<b>6:00am - 8:59am</b>	<b>Friday</b>	<b>April</b>
<b>Resulting Fatalities</b>	<b>9</b>	<b>(33%)</b>	<b>(44%)</b>	<b>(33%)</b>
<b>Serious Injury Crashes</b>	<b>135</b>	<b>3:00pm - 5:59pm</b>	<b>Saturday</b>	<b>May</b>
		<b>(24%)</b>	<b>(22%)</b>	<b>(15%)</b>



## House District 95 Crashes

Interstate Crashes

- Fatal
- Serious Injury

Non-interstate Crashes

- Fatal
- Serious Injury

The blue gradient represents the density of all crashes.

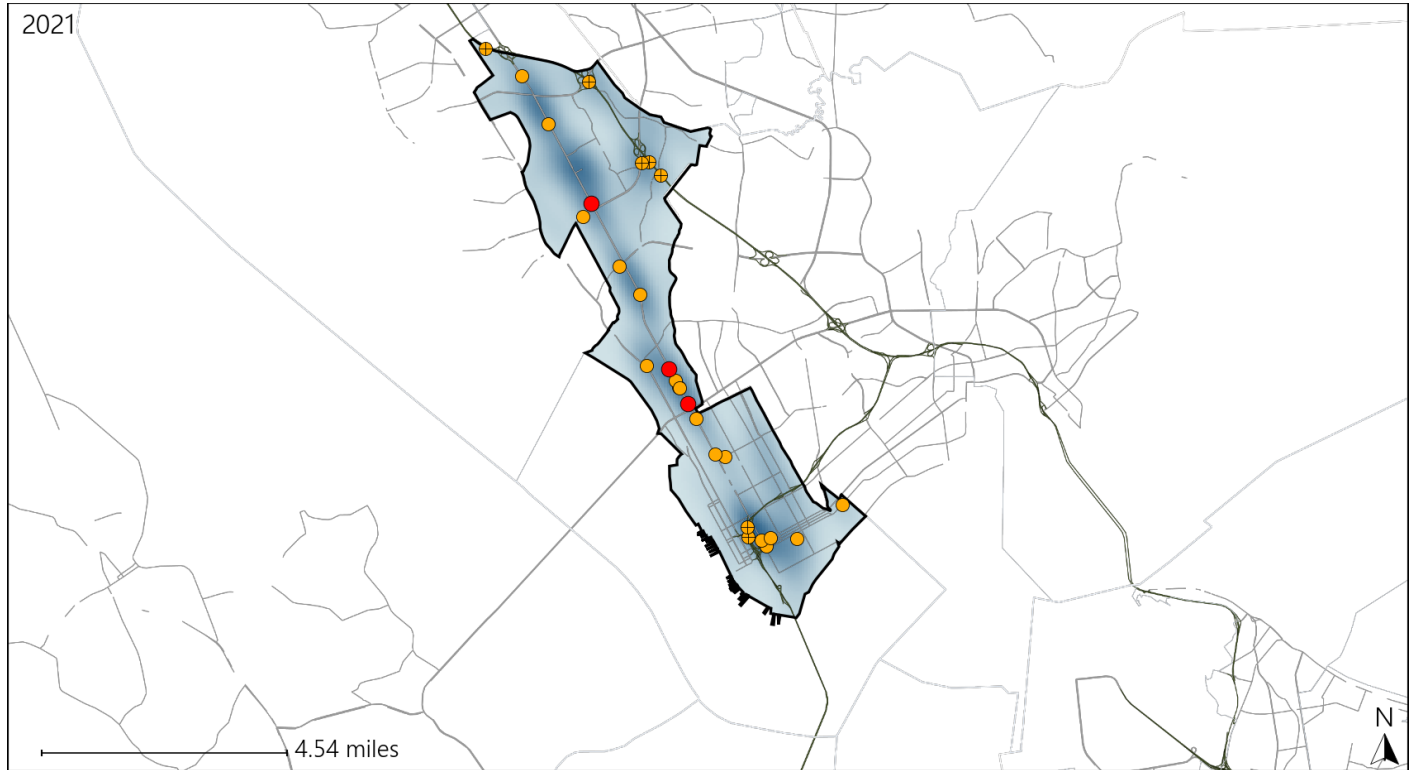


Available Crash Data - Calendar Year (CY)	CY 2018	CY 2019	CY 2020	CY 2021
Total Crashes	2176	2152	1869	2148
Fatal Crashes	9	7	18	9
Injury Crashes	832	914	768	797

# Virginia House District 95 Alcohol Crash Statistics

Report Generated April, 2022

	Count	Highest Time Period(s)	Highest Day(s)	Highest Month(s)
<b>Fatal Crashes</b>	<b>3</b>	6:00am - 8:59am	Friday	April • June
<b>Resulting Fatalities</b>	<b>3</b>	9:00pm - 11:59pm (66%)	(67%)	(66%)
<b>Serious Injury Crashes</b>	<b>24</b>	9:00pm - 11:59pm (33%)	Saturday (38%)	February • January (24%)



## House District 95 Alcohol-Related Crashes

Interstate Crashes

Non-interstate Crashes

● Fatal

● Fatal

● Serious Injury

● Serious Injury

The blue gradient represents the density of all alcohol-related crashes.

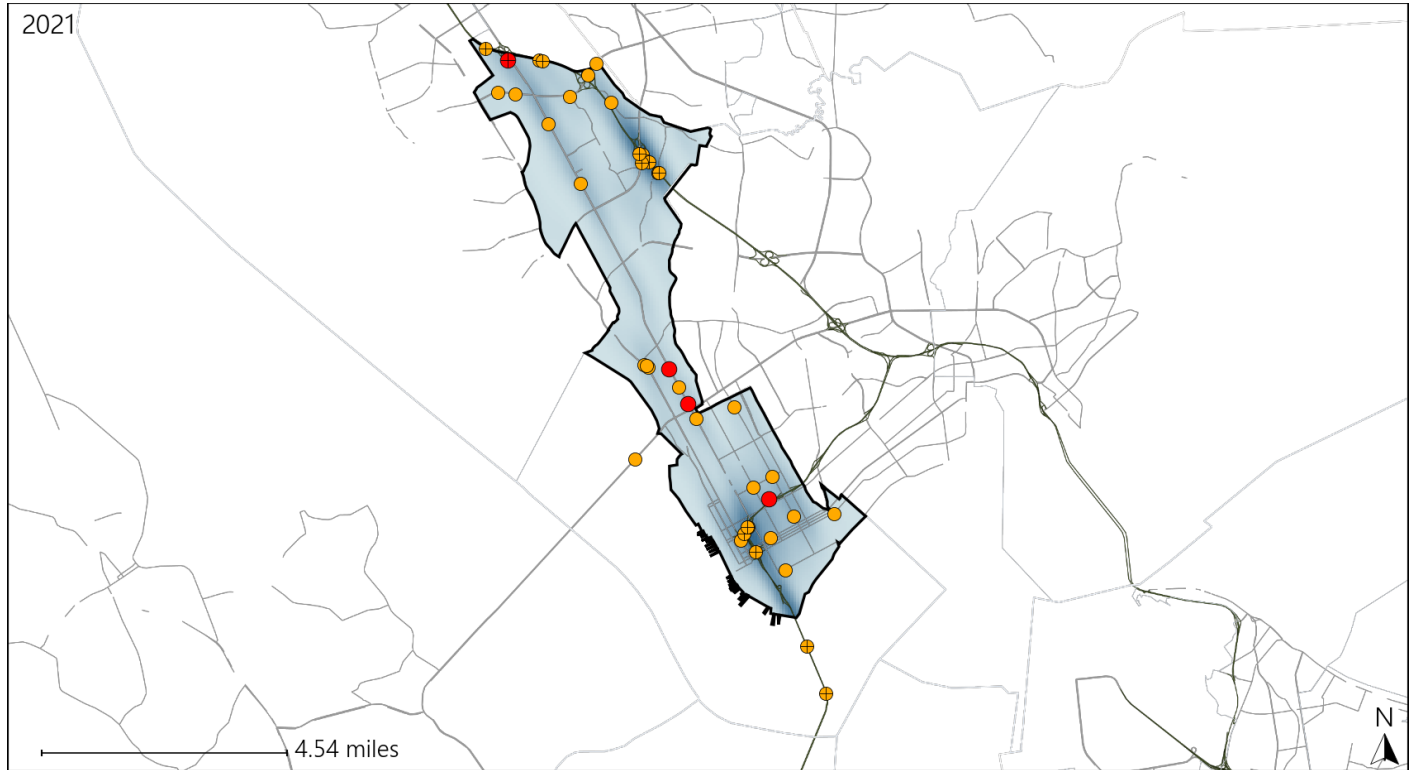


Available Crash Data - Calendar Year (CY)	CY 2018	CY 2019	CY 2020	CY 2021
Total Crashes	2176	2152	1869	2148
Fatal Crashes	9	7	18	9
Injury Crashes	832	914	768	797
Alcohol-Related Fatal Crashes	7	4	9	3
Percent of Alcohol-Related Fatal Crashes to Total Fatal Crashes	78%	57%	50%	33%
Alcohol-Related Injury Crashes	63	72	55	73
Percent of Alcohol-Related Injury Crashes to Total Injury Crashes	8%	8%	7%	9%

# Virginia House District 95 Speed Crash Statistics

Report Generated April, 2022

	Count	Highest Time Period(s)	Highest Day(s)	Highest Month(s)
<b>Fatal Crashes</b>	<b>4</b>	3:00pm - 5:59pm	Friday	April
<b>Resulting Fatalities</b>	<b>4</b>	6:00am - 8:59am (50%)	(75%)	(50%)
<b>Serious Injury Crashes</b>	<b>38</b>	6:00pm - 8:59pm (21%)	Saturday • Wednesday (42%)	May (16%)



## House District 95 Speed-Related Crashes

Interstate Crashes

Non-interstate Crashes

● Fatal

● Fatal

● Serious Injury

● Serious Injury

The blue gradient represents the density of all speed-related crashes.

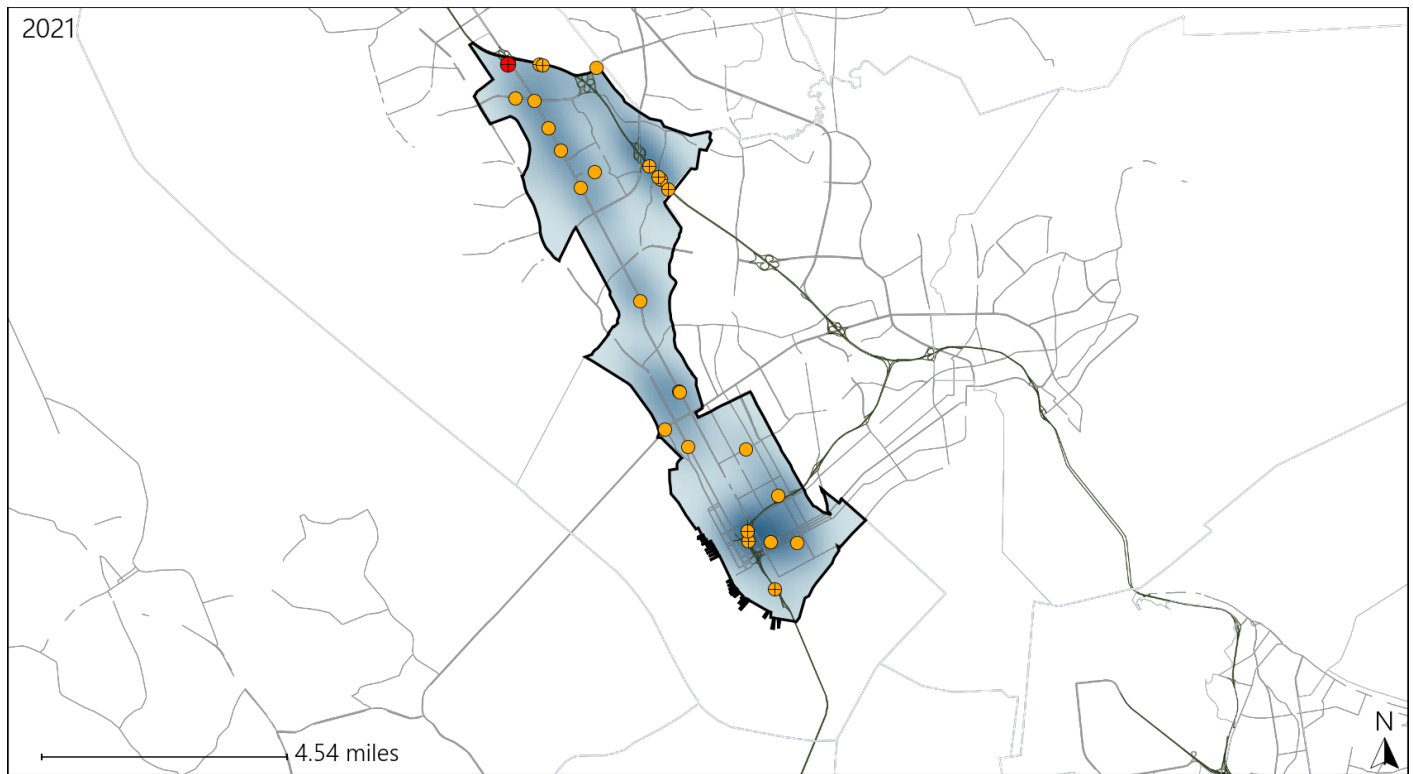


Available Crash Data - Calendar Year (CY)	CY 2018	CY 2019	CY 2020	CY 2021
Total Crashes	2176	2152	1869	2148
Fatal Crashes	9	7	18	9
Injury Crashes	832	914	768	797
Speed-Related Fatal Crashes	5	3	10	4
Percent of Speed-Related Fatal Crashes to Total Fatal Crashes	56%	43%	56%	44%
Speed-Related Injury Crashes	132	142	157	142
Percent of Speed-Related Injury Crashes to Total Injury Crashes	16%	16%	20%	18%

# Virginia House District 95 Unrestrained Crash Statistics

Report Generated April, 2022

	Count	Highest Time Period(s)	Highest Day(s)	Highest Month(s)
<b>Fatal Crashes</b>	<b>1</b>	Noon - 2:59pm	Saturday	July
<b>Unrestrained Fatalities</b>	<b>1</b>	(100%)	(100%)	(100%)
<b>Serious Injury Crashes</b>	<b>25</b>	3:00am - 5:59am 3:00pm - 5:59pm	Saturday	May
		(40%)	(32%)	(20%)



## House District 95 Unrestrained-Related Crashes

Interstate Crashes

Non-interstate Crashes

- Fatal
- ⊕ Serious Injury

- Fatal
- Serious Injury

The blue gradient represents the density of all unrestrained-related crashes.

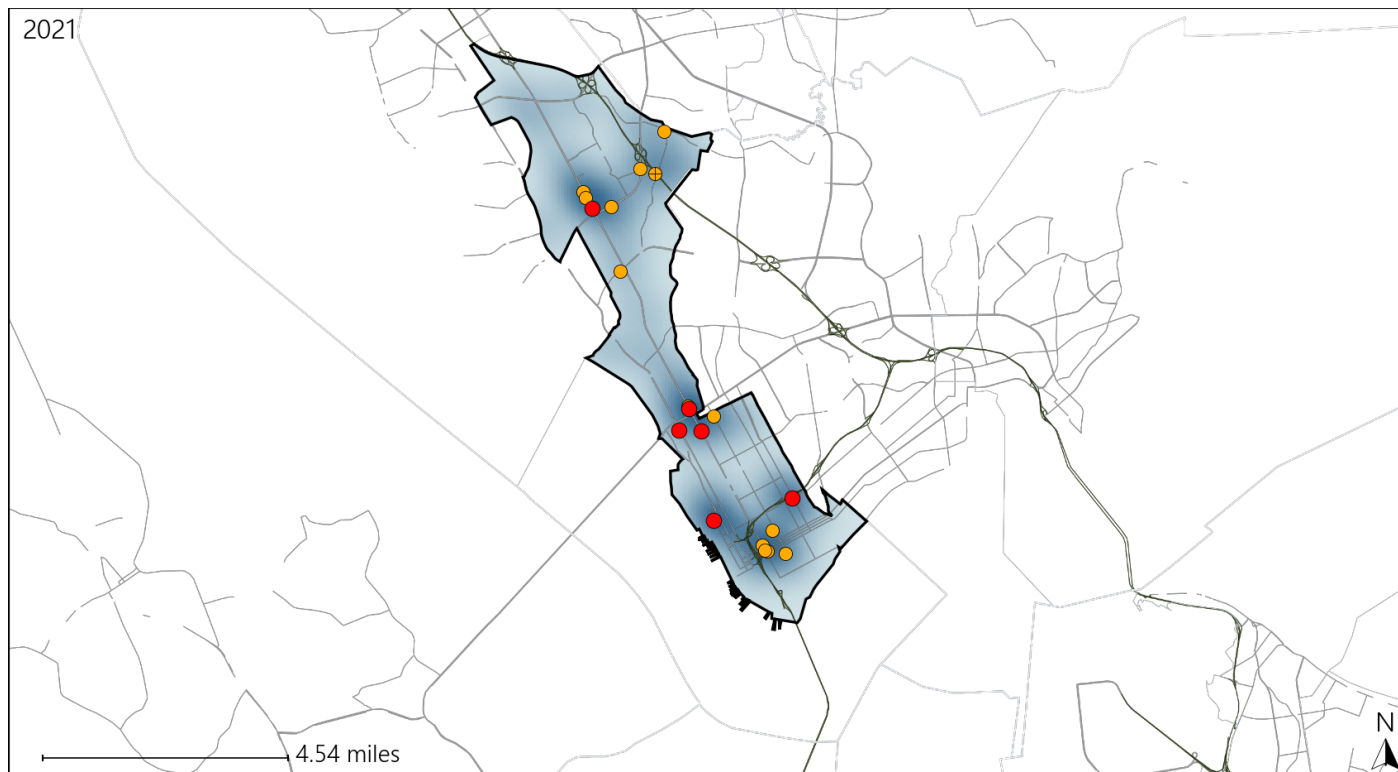


Available Crash Data - Calendar Year (CY)	CY 2018	CY 2019	CY 2020	CY 2021
Total Crashes	2176	2152	1869	2148
Fatalities	9	7	19	9
Injuries	1171	1329	1103	1157
Unrestrained Fatalities	3	1	8	1
Percent of Unrestrained Fatalities to Total Fatalities	33%	14%	42%	11%
Unrestrained Injuries	40	50	41	68
Percent of Unrestrained Injuries to Total Injuries	3%	4%	4%	6%

# Virginia House District 95 Pedestrian Crash Statistics

Report Generated April, 2022

	Count	Highest Time Period(s)	Highest Day(s)	Highest Month(s)
<b>Fatal Crashes</b>	<b>6</b>	<b>6:00am - 8:59am</b>	<b>Friday</b>	<b>April</b>
<b>Pedestrian Fatalities</b>	<b>6</b>	<b>(50%)</b>	<b>(33%)</b>	<b>(33%)</b>
<b>Serious Injury Crashes</b>	<b>14</b>	<b>Noon - 2:59pm</b>	<b>Friday • Monday</b>	<b>November</b>
		<b>(43%)</b>	<b>(42%)</b>	<b>(21%)</b>



## House District 95 Pedestrian-Related Crashes

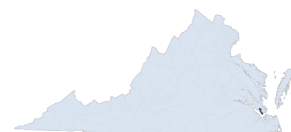
Interstate Crashes

- Fatal
- Serious Injury

Non-interstate Crashes

- Fatal
- Serious Injury

The blue gradient represents the density of all pedestrian-related crashes.

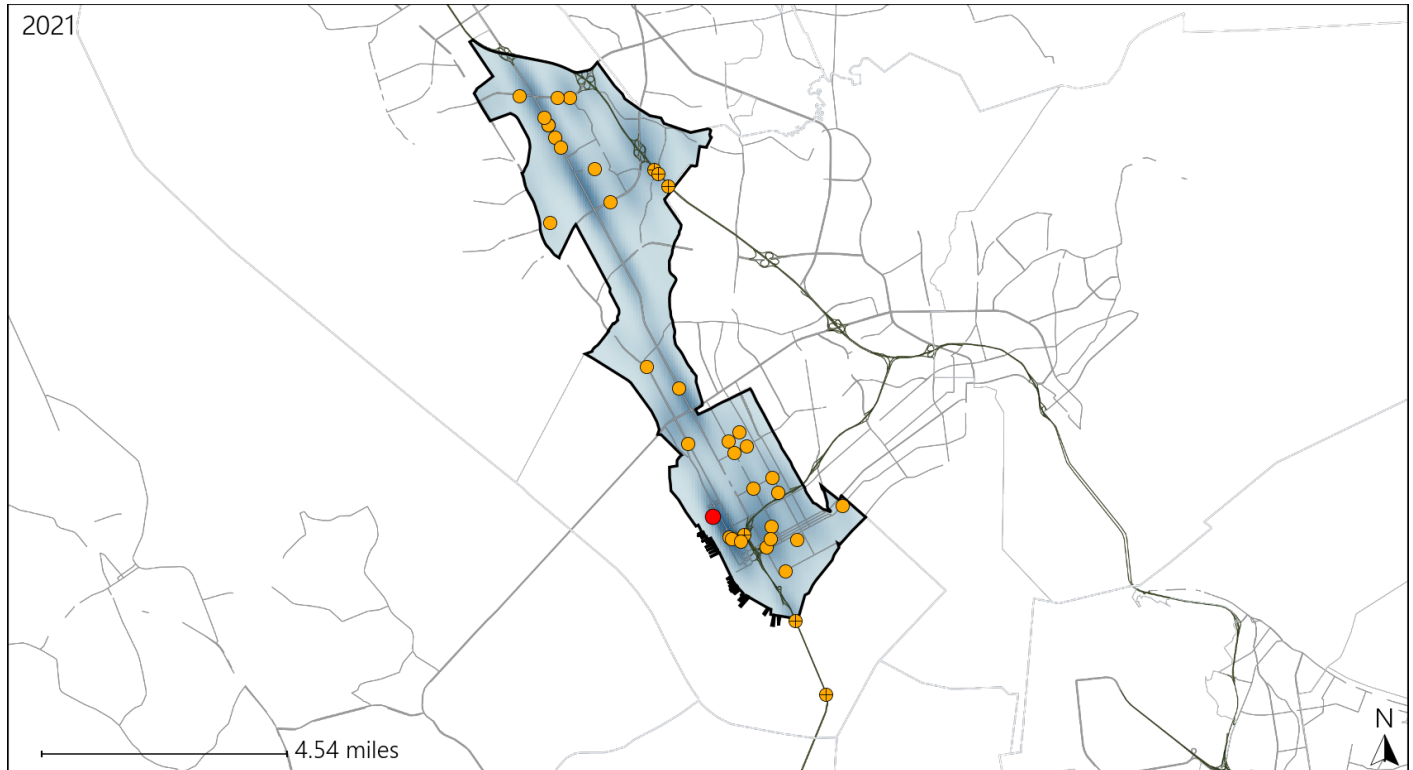


Available Crash Data - Calendar Year (CY)	CY 2018	CY 2019	CY 2020	CY 2021
Total Crashes	2176	2152	1869	2148
Fatal Crashes	9	7	18	9
Injury Crashes	832	914	768	797
Pedestrian-Related Fatal Crashes	2	2	3	6
Percent of Pedestrian-Related Fatal Crashes to Total Fatal Crashes	22%	29%	17%	67%
Pedestrian-Related Injury Crashes	29	40	23	39
Percent of Pedestrian-Related Injury Crashes to Total Injury Crashes	3%	4%	3%	5%

# Virginia House District 95 Distracted Driving Crash Statistics

Report Generated April, 2022

	Count	Highest Time Period(s)	Highest Day(s)	Highest Month(s)
<b>Fatal Crashes</b>	<b>1</b>	<b>6:00am - 8:59am</b>	<b>Thursday</b>	<b>February</b>
<b>Resulting Fatalities</b>	<b>1</b>	<b>(100%)</b>	<b>(100%)</b>	<b>(100%)</b>
<b>Serious Injury Crashes</b>	<b>36</b>	<b>Noon - 2:59pm</b>	<b>Wednesday</b>	<b>June</b>
		<b>(28%)</b>	<b>(25%)</b>	<b>(19%)</b>



## House District 95 Distracted Driving-Related Crashes

Interstate Crashes

Non-interstate Crashes

- Fatal
- Serious Injury

- Fatal
- Serious Injury

The blue gradient represents the density of all distracted driving-related crashes.



Available Crash Data - Calendar Year (CY)	CY 2018	CY 2019	CY 2020	CY 2021
Total Crashes	2176	2152	1869	2148
Fatal Crashes	9	7	18	9
Injury Crashes	832	914	768	797
Distracted Driving-Related Fatal Crashes	0	1	1	1
Percent of Distracted Driving-Related Fatal Crashes to Total Fatal Crashes	0%	14%	6%	11%
Distracted Driving-Related Injury Crashes	231	249	172	209
Percent of Distracted Driving-Related Injury Crashes to Total Injury Crashes	28%	27%	22%	26%