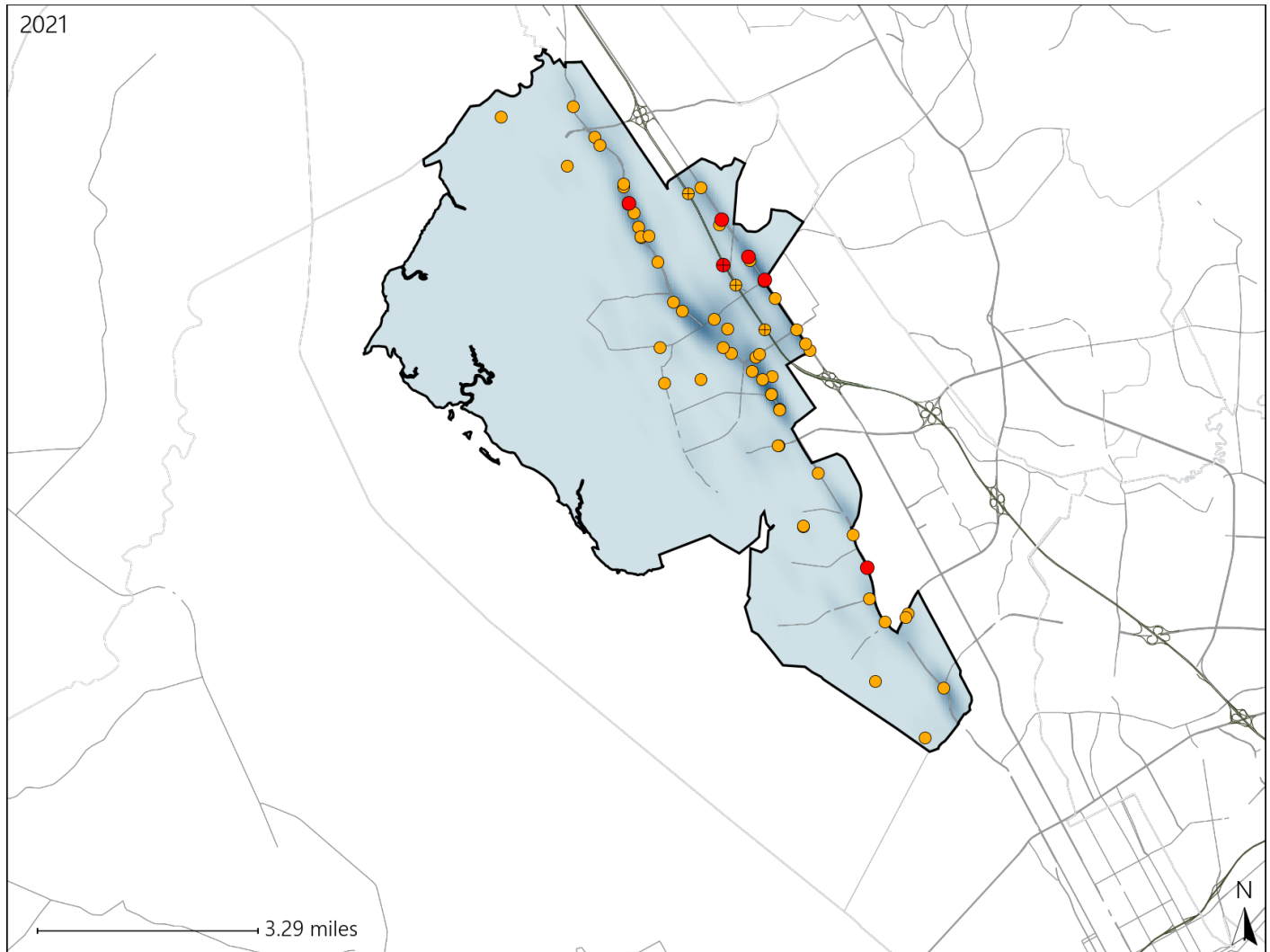


Virginia House District 94 Crash Statistics

Report Generated April, 2022

	Count	Highest Time Period(s)	Highest Day(s)	Highest Month(s)
Fatal Crashes	6	6:00pm - 8:59pm	Friday	April
Resulting Fatalities	6	9:00pm - 11:59pm (66%)	(33%)	(33%)
Serious Injury Crashes	57	3:00pm - 5:59pm (26%)	Sunday (21%)	August (21%)



House District 94 Crashes

Interstate Crashes

- Fatal
- Serious Injury

Non-interstate Crashes

- Fatal
- Serious Injury

The blue gradient represents the density of all crashes.



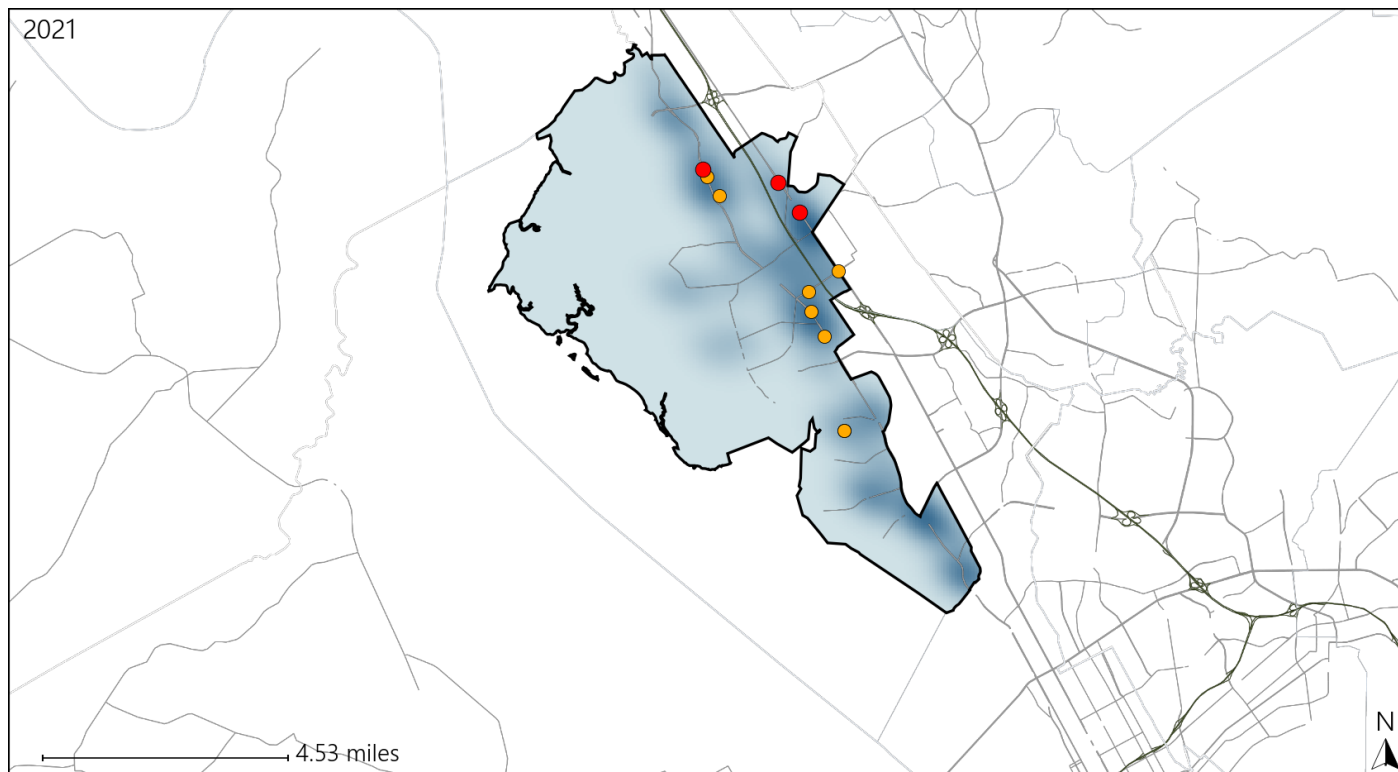
Available Crash Data - Calendar Year (CY)	CY 2018	CY 2019	CY 2020	CY 2021
Total Crashes	799	897	733	802
Fatal Crashes	5	4	2	6
Injury Crashes	374	402	351	343

Report of Crashes for January 1st - December 31st, 2021

Virginia House District 94 Alcohol Crash Statistics

Report Generated April, 2022

	Count	Highest Time Period(s)	Highest Day(s)	Highest Month(s)
Fatal Crashes	3	6:00pm - 8:59pm	Friday	April • August
Resulting Fatalities	3	(67%)	(67%)	(66%)
Serious Injury Crashes	8	Midnight - 2:59am	Sunday	August
		(50%)	(50%)	(38%)



House District 94 Alcohol-Related Crashes

Interstate Crashes

Non-interstate Crashes

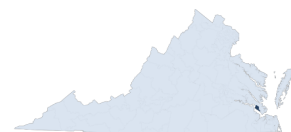
● Fatal

● Fatal

● Serious Injury

● Serious Injury

The blue gradient represents the density of all alcohol-related crashes.

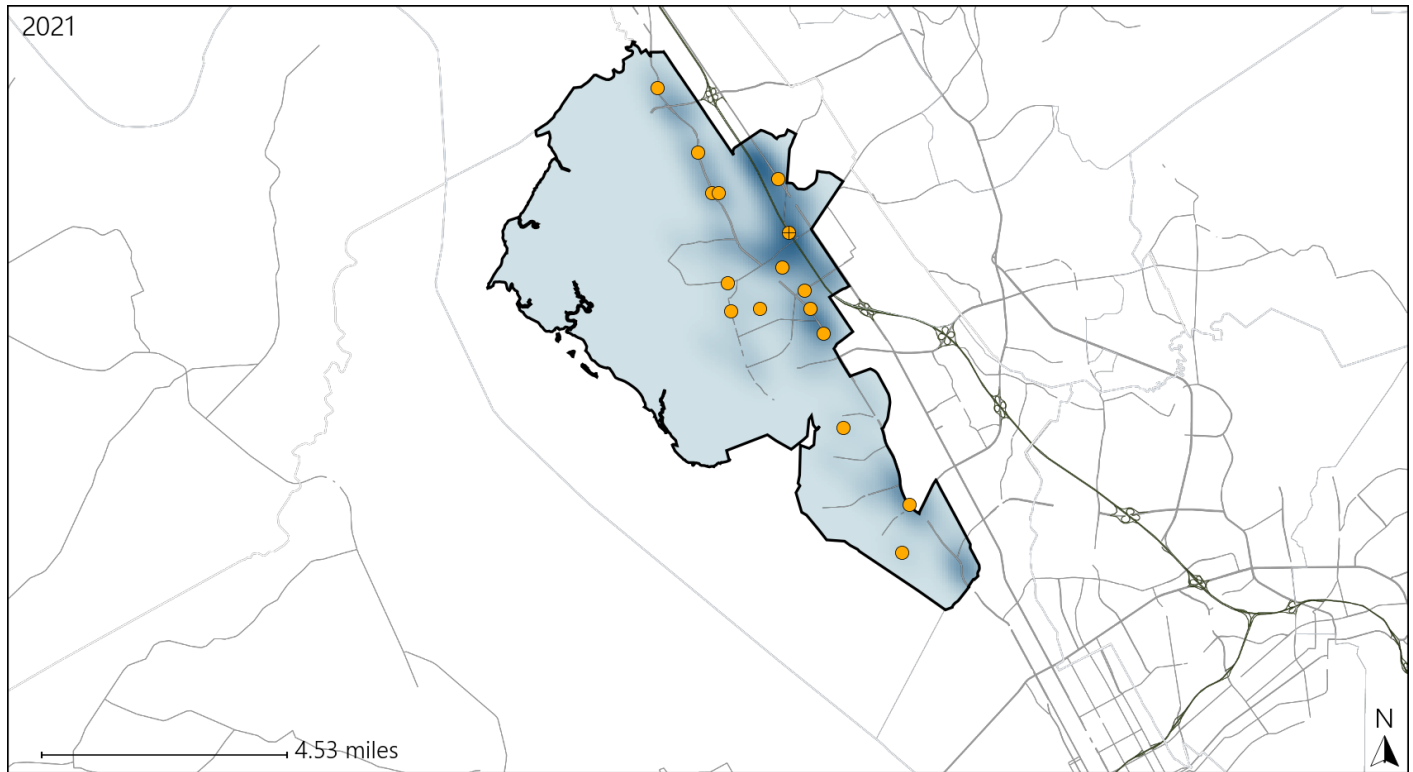


Available Crash Data - Calendar Year (CY)	CY 2018	CY 2019	CY 2020	CY 2021
Total Crashes	799	897	733	802
Fatal Crashes	5	4	2	6
Injury Crashes	374	402	351	343
Alcohol-Related Fatal Crashes	1	2	2	3
Percent of Alcohol-Related Fatal Crashes to Total Fatal Crashes	20%	50%	100%	50%
Alcohol-Related Injury Crashes	32	30	27	29
Percent of Alcohol-Related Injury Crashes to Total Injury Crashes	9%	7%	8%	8%

Virginia House District 94 Speed Crash Statistics

Report Generated April, 2022

	Count	Highest Time Period(s)	Highest Day(s)	Highest Month(s)
Fatal Crashes	0	-	-	-
Resulting Fatalities	0	-	-	-
Serious Injury Crashes	16	3:00pm - 5:59pm Midnight - 2:59am (50%)	Sunday (25%)	August - May (50%)



House District 94 Speed-Related Crashes

Interstate Crashes

Non-interstate Crashes

● Fatal

● Fatal

⊕ Serious Injury

⊕ Serious Injury

The blue gradient represents the density of all speed-related crashes.



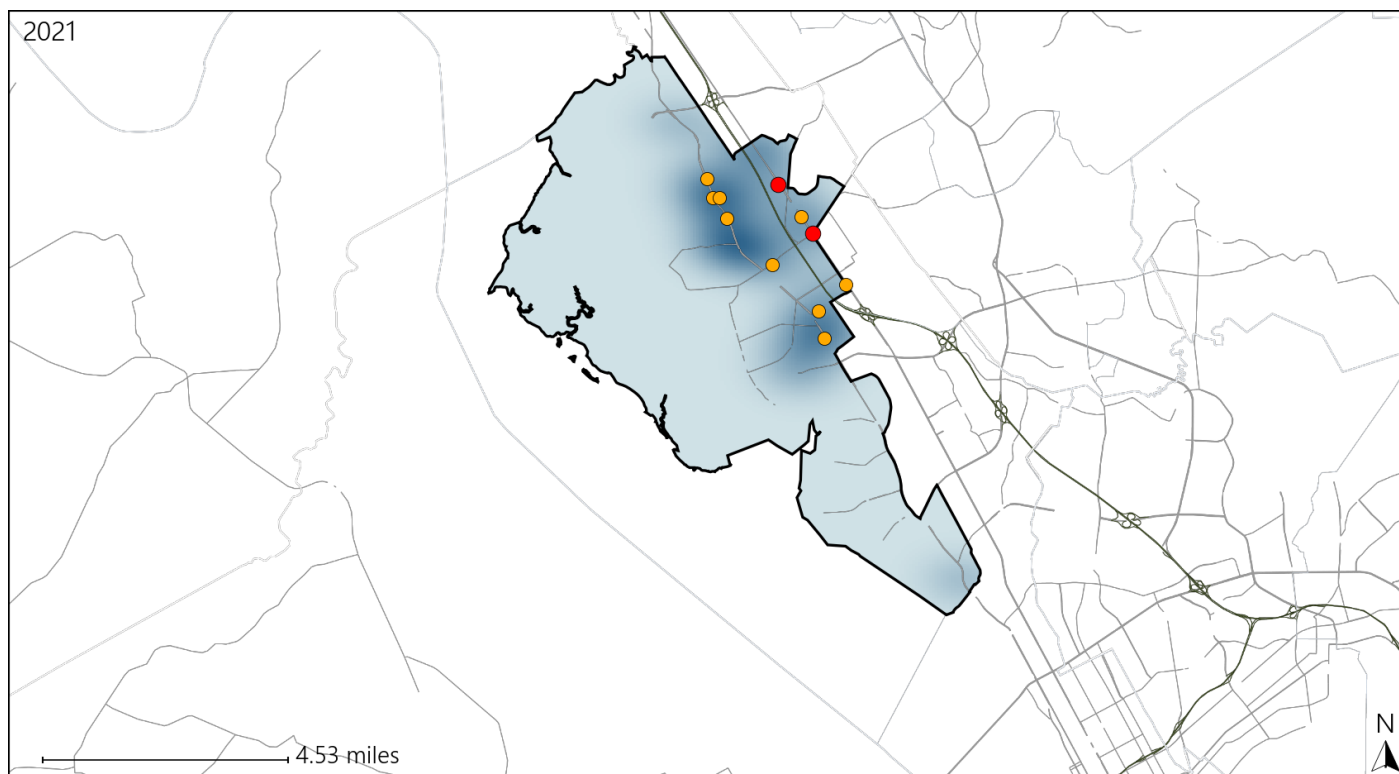
Available Crash Data - Calendar Year (CY)	CY 2018	CY 2019	CY 2020	CY 2021
Total Crashes	799	897	733	802
Fatal Crashes	5	4	2	6
Injury Crashes	374	402	351	343
Speed-Related Fatal Crashes	2	0	2	0
Percent of Speed-Related Fatal Crashes to Total Fatal Crashes	40%	0%	100%	0%
Speed-Related Injury Crashes	40	59	48	62
Percent of Speed-Related Injury Crashes to Total Injury Crashes	11%	15%	14%	18%

Report of Crashes for January 1st - December 31st, 2021

Virginia House District 94 Unrestrained Crash Statistics

Report Generated April, 2022

	Count	Highest Time Period(s)	Highest Day(s)	Highest Month(s)
Fatal Crashes	2	6:00pm - 8:59pm	Saturday • Tuesday	April • December
Unrestrained Fatalities	2	9:00pm - 11:59pm (100%)	(100%)	(100%)
Serious Injury Crashes	9	3:00pm - 5:59pm 9:00am - 11:59am (44%)	Sunday (44%)	April • August (44%)



House District 94 Unrestrained-Related Crashes

Interstate Crashes

Non-interstate Crashes

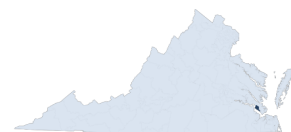
● Fatal

● Fatal

⊕ Serious Injury

⊕ Serious Injury

The blue gradient represents the density of all unrestrained-related crashes.

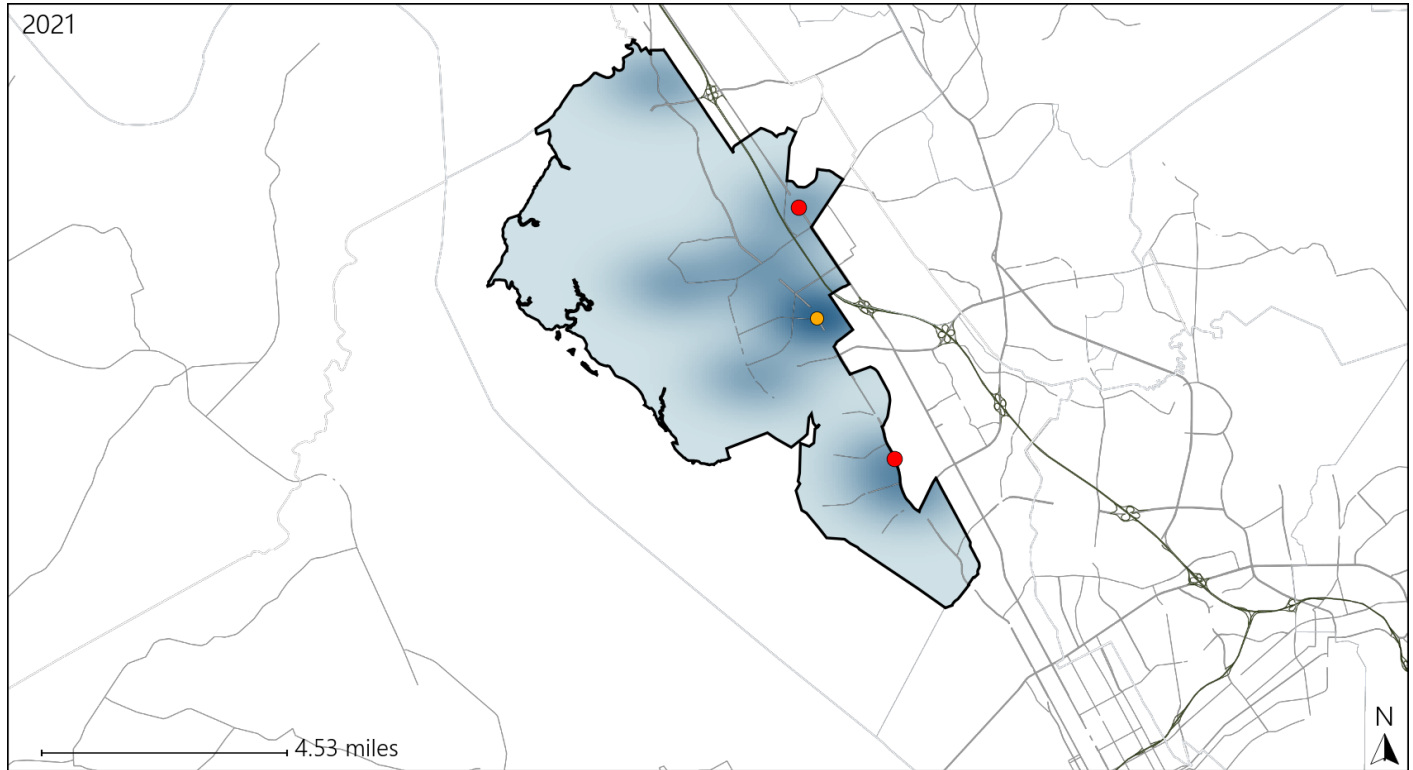


Available Crash Data - Calendar Year (CY)	CY 2018	CY 2019	CY 2020	CY 2021
Total Crashes	799	897	733	802
Fatalities	5	4	2	6
Injuries	541	603	488	519
Unrestrained Fatalities	1	2	0	2
Percent of Unrestrained Fatalities to Total Fatalities	20%	50%	0%	33%
Unrestrained Injuries	20	34	18	26
Percent of Unrestrained Injuries to Total Injuries	4%	6%	4%	5%

Virginia House District 94 Pedestrian Crash Statistics

Report Generated April, 2022

	Count	Highest Time Period(s)	Highest Day(s)	Highest Month(s)
Fatal Crashes	2	3:00pm - 5:59pm	Friday • Monday	March • September
Pedestrian Fatalities	2	9:00pm - 11:59pm (100%)	(100%)	(100%)
Serious Injury Crashes	1	6:00pm - 8:59pm (100%)	Sunday (100%)	January (100%)



House District 94 Pedestrian-Related Crashes

Interstate Crashes

Non-interstate Crashes

- Fatal
- Serious Injury

- Fatal
- Serious Injury

The blue gradient represents the density of all pedestrian-related crashes.

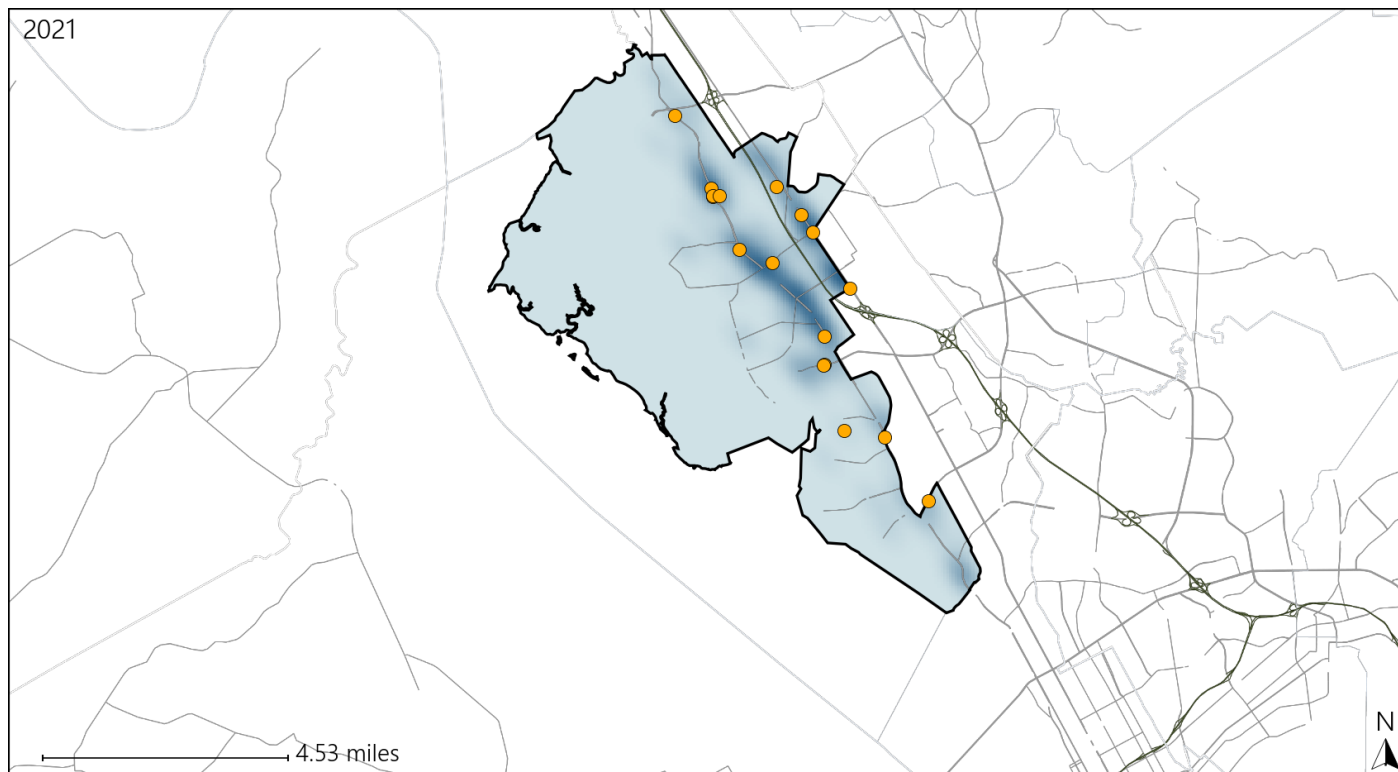


Available Crash Data - Calendar Year (CY)	CY 2018	CY 2019	CY 2020	CY 2021
Total Crashes	799	897	733	802
Fatal Crashes	5	4	2	6
Injury Crashes	374	402	351	343
Pedestrian-Related Fatal Crashes	2	2	0	2
Percent of Pedestrian-Related Fatal Crashes to Total Fatal Crashes	40%	50%	0%	33%
Pedestrian-Related Injury Crashes	14	19	8	7
Percent of Pedestrian-Related Injury Crashes to Total Injury Crashes	4%	5%	2%	2%

Virginia House District 94 Distracted Driving Crash Statistics

Report Generated April, 2022

	Count	Highest Time Period(s)	Highest Day(s)	Highest Month(s)
Fatal Crashes	0	-	-	-
Resulting Fatalities	0	-	-	-
Serious Injury Crashes	17	9:00am - 11:59am (41%)	Saturday • Sunday (48%)	August (24%)



House District 94 Distracted Driving-Related Crashes

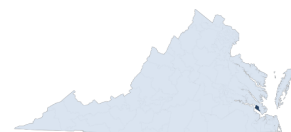
Interstate Crashes

- Fatal
- Serious Injury

Non-interstate Crashes

- Fatal
- Serious Injury

The blue gradient represents the density of all distracted driving-related crashes.



Available Crash Data - Calendar Year (CY)	CY 2018	CY 2019	CY 2020	CY 2021
Total Crashes	799	897	733	802
Fatal Crashes	5	4	2	6
Injury Crashes	374	402	351	343
Distracted Driving-Related Fatal Crashes	1	0	0	0
Percent of Distracted Driving-Related Fatal Crashes to Total Fatal Crashes	20%	0%	0%	0%
Distracted Driving-Related Injury Crashes	106	104	98	99
Percent of Distracted Driving-Related Injury Crashes to Total Injury Crashes	28%	26%	28%	29%