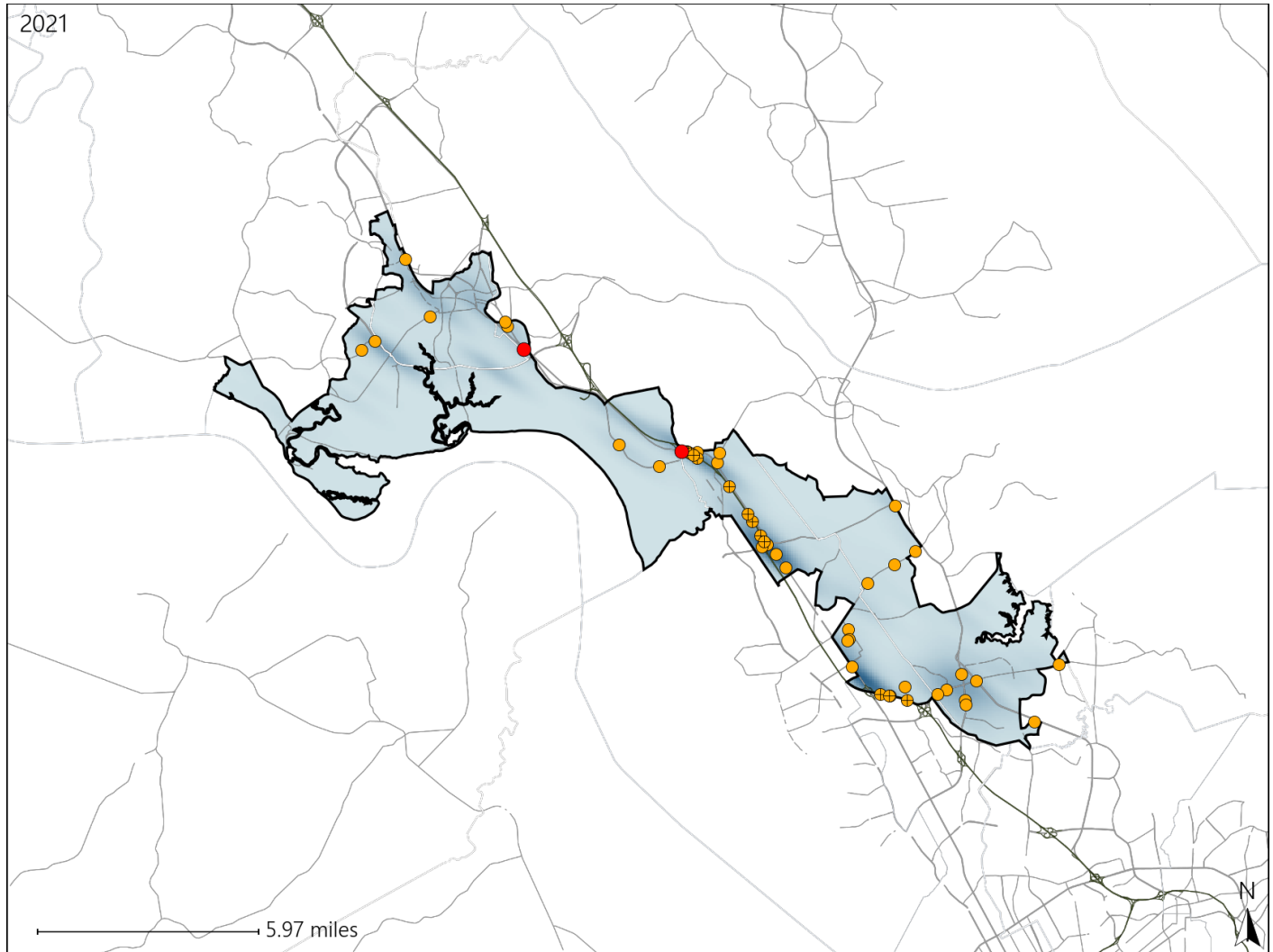


# Virginia House District 93 Crash Statistics

Report Generated April, 2022

	Count	Highest Time Period(s)	Highest Day(s)	Highest Month(s)
<b>Fatal Crashes</b>	<b>2</b>	<b>6:00pm - 8:59pm</b>	<b>Friday • Tuesday</b>	<b>April • December</b>
<b>Resulting Fatalities</b>	<b>2</b>	<b>(100%)</b>	<b>(100%)</b>	<b>(100%)</b>
<b>Serious Injury Crashes</b>	<b>46</b>	<b>Noon - 2:59pm</b>	<b>Thursday</b>	<b>February • March</b>
		<b>(24%)</b>	<b>(20%)</b>	<b>(30%)</b>



## House District 93 Crashes

Interstate Crashes

- Fatal
- Serious Injury

Non-interstate Crashes

- Fatal
- Serious Injury

The blue gradient represents the density of all crashes.

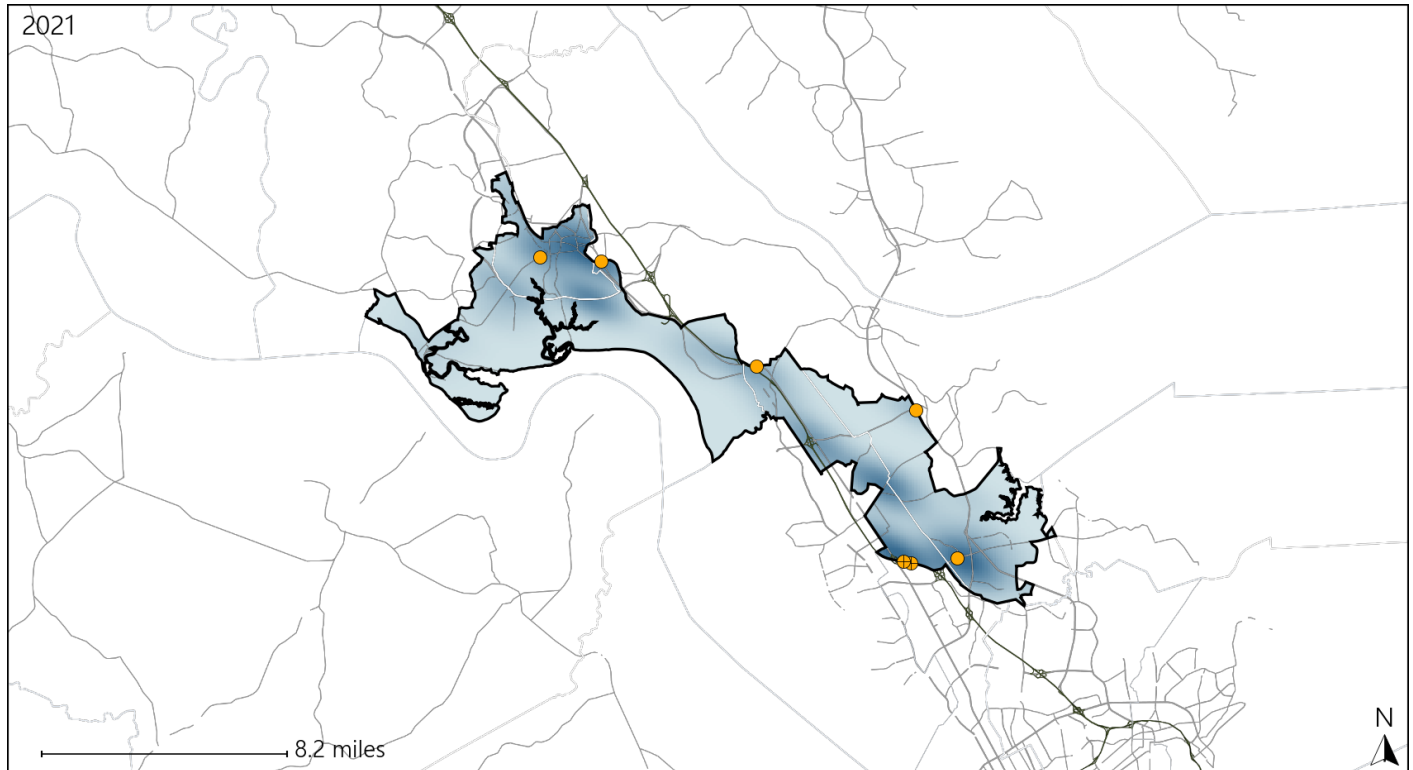


Available Crash Data - Calendar Year (CY)	CY 2018	CY 2019	CY 2020	CY 2021
Total Crashes	1367	1207	920	1053
Fatal Crashes	5	11	4	2
Injury Crashes	557	517	366	385

# Virginia House District 93 Alcohol Crash Statistics

Report Generated April, 2022

	Count	Highest Time Period(s)	Highest Day(s)	Highest Month(s)
<b>Fatal Crashes</b>	<b>0</b>	-	-	-
<b>Resulting Fatalities</b>	<b>0</b>			
<b>Serious Injury Crashes</b>	<b>7</b>	<b>6:00pm - 8:59pm</b> (43%)	<b>Saturday • Tuesday</b> (58%)	<b>January</b> (29%)



## House District 93 Alcohol-Related Crashes

Interstate Crashes

Non-interstate Crashes

- Fatal
- Serious Injury

- Fatal
- Serious Injury

The blue gradient represents the density of all alcohol-related crashes.

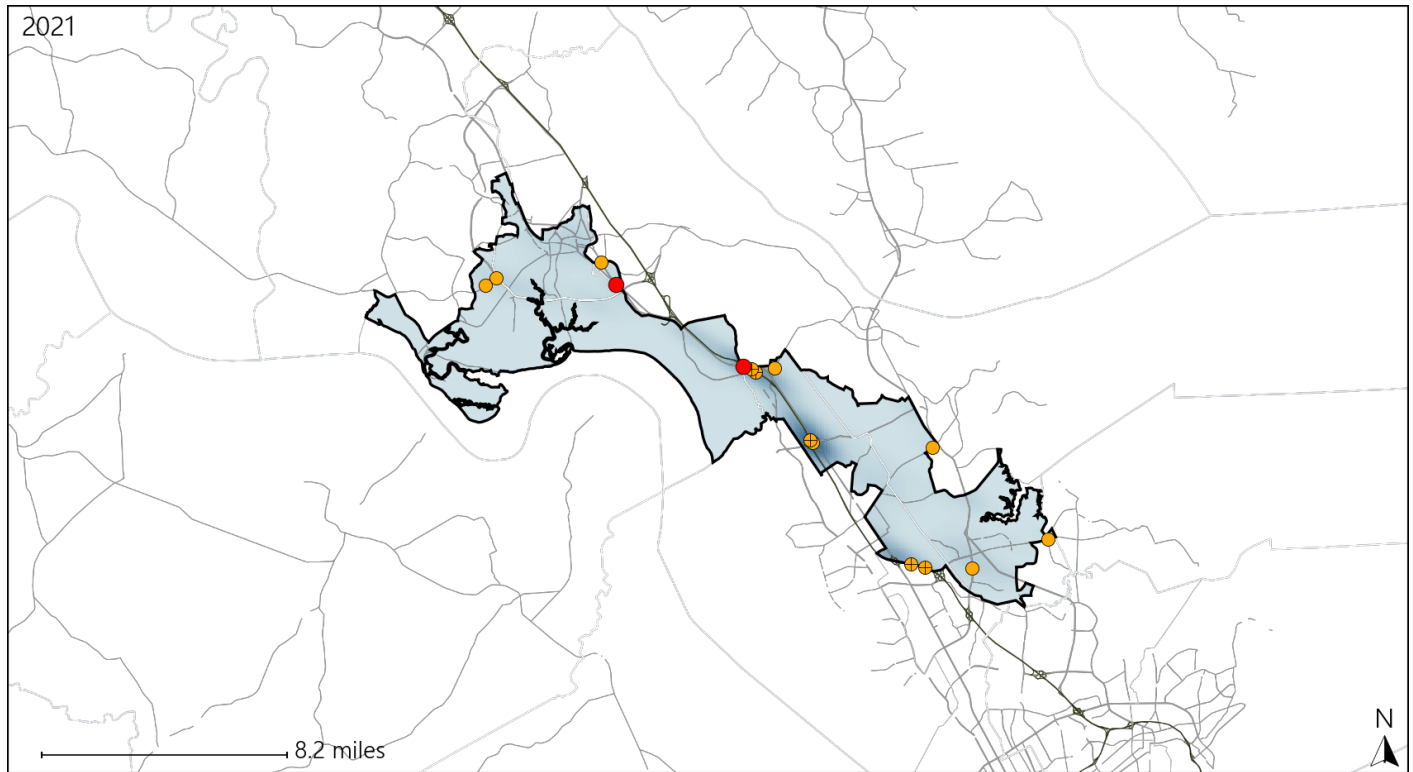


Available Crash Data - Calendar Year (CY)	CY 2018	CY 2019	CY 2020	CY 2021
Total Crashes	1367	1207	920	1053
Fatal Crashes	5	11	4	2
Injury Crashes	557	517	366	385
Alcohol-Related Fatal Crashes	4	5	1	0
Percent of Alcohol-Related Fatal Crashes to Total Fatal Crashes	80%	45%	25%	0%
Alcohol-Related Injury Crashes	35	27	21	37
Percent of Alcohol-Related Injury Crashes to Total Injury Crashes	6%	5%	6%	10%

# Virginia House District 93 Speed Crash Statistics

Report Generated April, 2022

	Count	Highest Time Period(s)	Highest Day(s)	Highest Month(s)
<b>Fatal Crashes</b>	<b>2</b>	<b>6:00pm - 8:59pm</b>	<b>Friday • Tuesday</b>	<b>April • December</b>
<b>Resulting Fatalities</b>	<b>2</b>	<b>(100%)</b>	<b>(100%)</b>	<b>(100%)</b>
<b>Serious Injury Crashes</b>	<b>13</b>	<b>3:00pm - 5:59pm</b>	<b>Friday • Thursday</b>	<b>March</b>
		<b>Noon - 2:59pm</b>	<b>(46%)</b>	<b>(38%)</b>



## House District 93 Speed-Related Crashes

Interstate Crashes

Non-interstate Crashes

● Fatal

● Fatal

⊕ Serious Injury

⊕ Serious Injury

The blue gradient represents the density of all speed-related crashes.

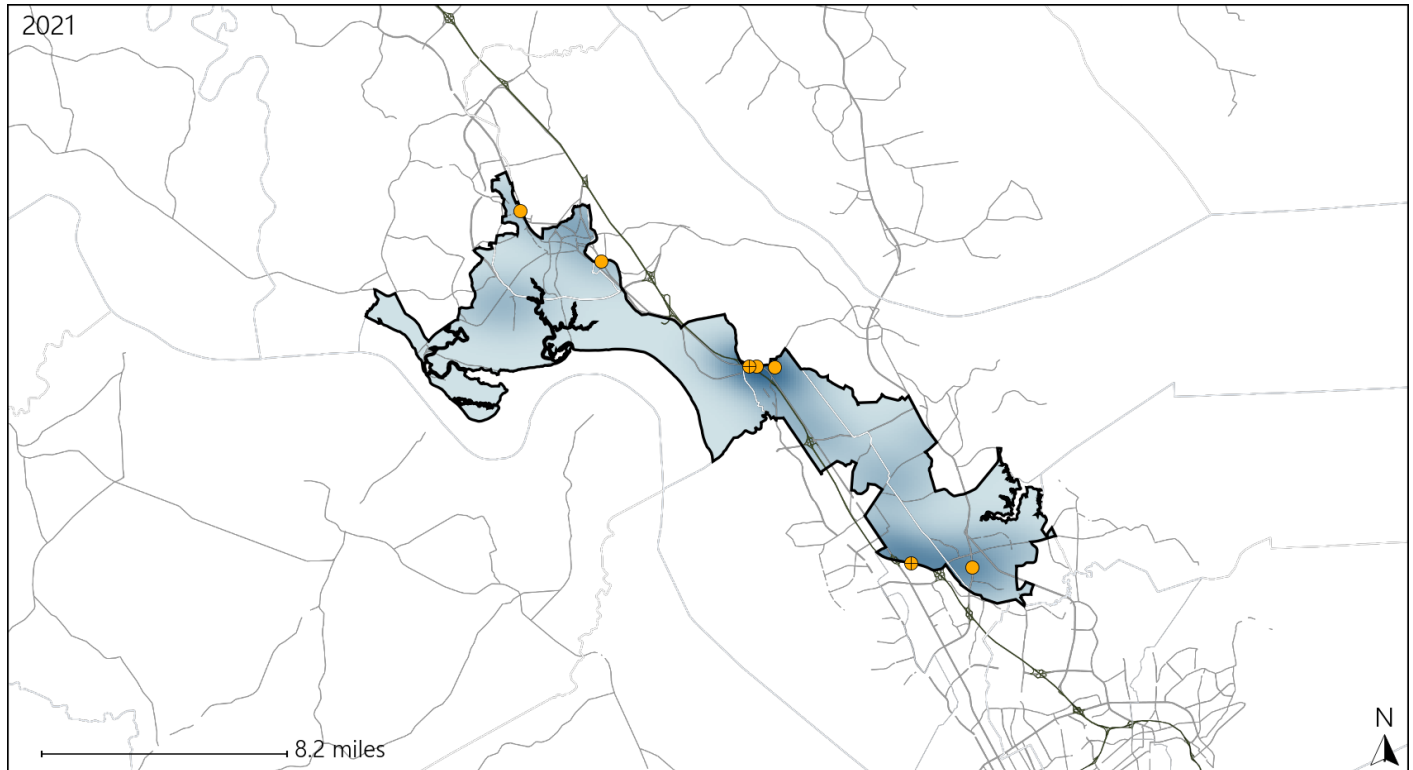


Available Crash Data - Calendar Year (CY)	CY 2018	CY 2019	CY 2020	CY 2021
Total Crashes	1367	1207	920	1053
Fatal Crashes	5	11	4	2
Injury Crashes	557	517	366	385
Speed-Related Fatal Crashes	3	6	2	2
Percent of Speed-Related Fatal Crashes to Total Fatal Crashes	60%	55%	50%	100%
Speed-Related Injury Crashes	98	94	68	71
Percent of Speed-Related Injury Crashes to Total Injury Crashes	18%	18%	19%	18%

# Virginia House District 93 Unrestrained Crash Statistics

Report Generated April, 2022

	Count	Highest Time Period(s)	Highest Day(s)	Highest Month(s)
<b>Fatal Crashes</b>	<b>0</b>	-	-	-
<b>Unrestrained Fatalities</b>	<b>0</b>	-	-	-
<b>Serious Injury Crashes</b>	<b>7</b>	<b>3:00pm - 5:59pm</b> (29%)	<b>Saturday • Sunday</b> (58%)	<b>March • September</b> (58%)



## House District 93 Unrestrained-Related Crashes

Interstate Crashes

Non-interstate Crashes

- Fatal
- Serious Injury

- Fatal
- Serious Injury

The blue gradient represents the density of all unrestrained-related crashes.

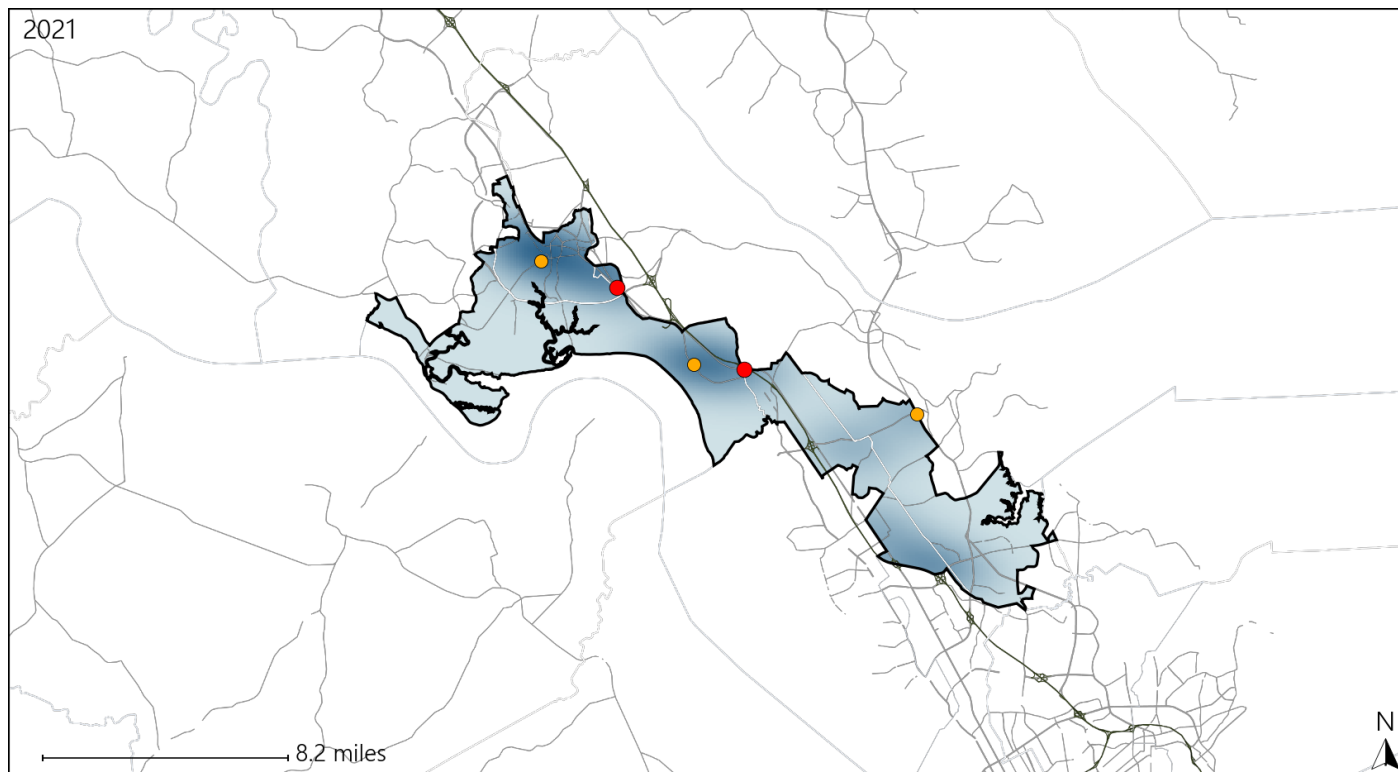


Available Crash Data - Calendar Year (CY)	CY 2018	CY 2019	CY 2020	CY 2021
Total Crashes	1367	1207	920	1053
Fatalities	5	13	4	2
Injuries	866	819	543	620
Unrestrained Fatalities	3	1	1	0
Percent of Unrestrained Fatalities to Total Fatalities	60%	8%	25%	0%
Unrestrained Injuries	23	16	20	27
Percent of Unrestrained Injuries to Total Injuries	3%	2%	4%	4%

# Virginia House District 93 Pedestrian Crash Statistics

Report Generated April, 2022

	Count	Highest Time Period(s)	Highest Day(s)	Highest Month(s)
<b>Fatal Crashes</b>	<b>2</b>	<b>6:00pm - 8:59pm</b>	<b>Friday • Tuesday</b>	<b>April • December</b>
<b>Pedestrian Fatalities</b>	<b>2</b>	<b>(100%)</b>	<b>(100%)</b>	<b>(100%)</b>
<b>Serious Injury Crashes</b>	<b>3</b>	<b>6:00pm - 8:59pm</b>	<b>Friday</b>	<b>February • January</b>
		<b>(100%)</b>	<b>(67%)</b>	<b>(66%)</b>



## House District 93 Pedestrian-Related Crashes

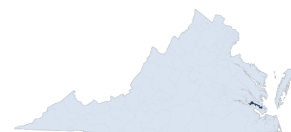
Interstate Crashes

- Fatal
- Serious Injury

Non-interstate Crashes

- Fatal
- Serious Injury

The blue gradient represents the density of all pedestrian-related crashes.

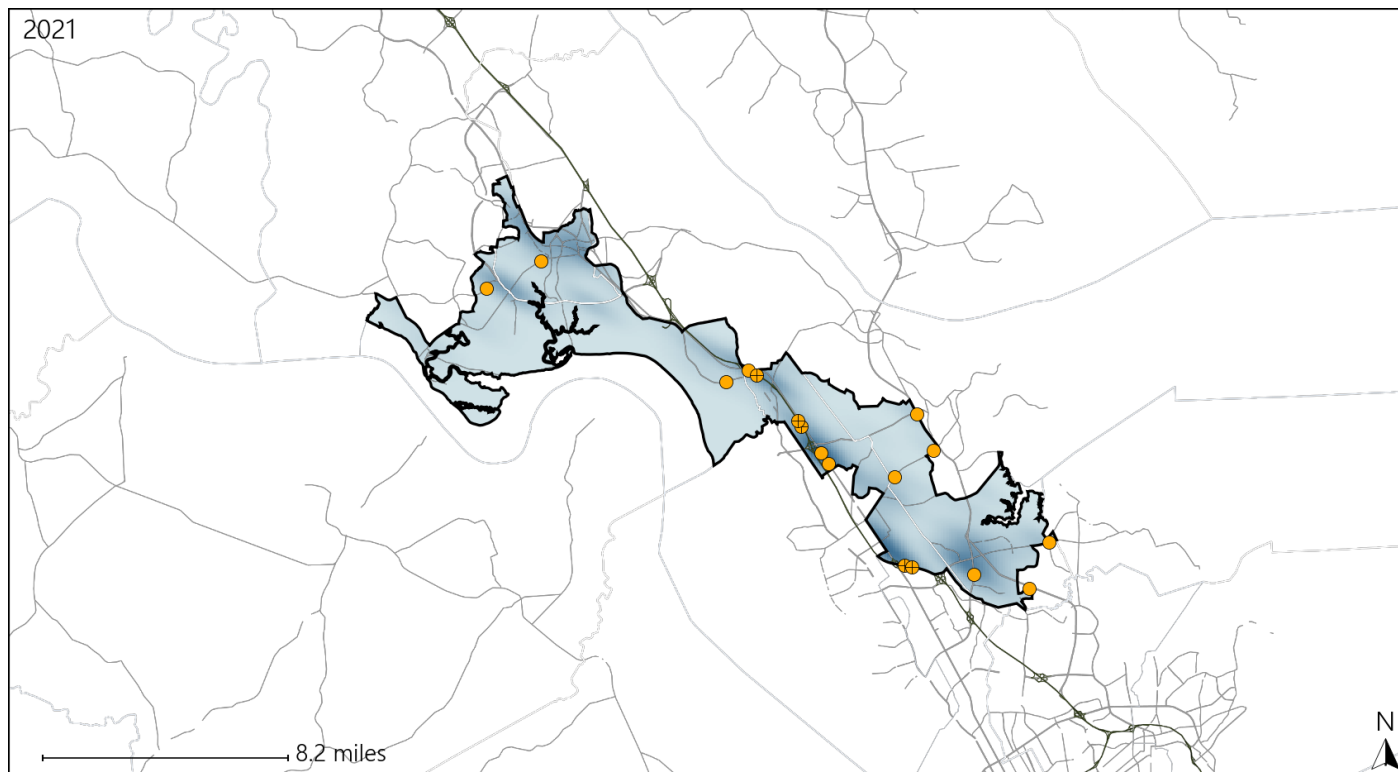


Available Crash Data - Calendar Year (CY)	CY 2018	CY 2019	CY 2020	CY 2021
Total Crashes	1367	1207	920	1053
Fatal Crashes	5	11	4	2
Injury Crashes	557	517	366	385
Pedestrian-Related Fatal Crashes	0	0	1	2
Percent of Pedestrian-Related Fatal Crashes to Total Fatal Crashes	0%	0%	25%	100%
Pedestrian-Related Injury Crashes	16	19	9	11
Percent of Pedestrian-Related Injury Crashes to Total Injury Crashes	3%	4%	2%	3%

# Virginia House District 93 Distracted Driving Crash Statistics

Report Generated April, 2022

	Count	Highest Time Period(s)	Highest Day(s)	Highest Month(s)
<b>Fatal Crashes</b>	<b>0</b>	-	-	-
<b>Resulting Fatalities</b>	<b>0</b>	-	-	-
<b>Serious Injury Crashes</b>	<b>17</b>	<b>6:00am - 8:59am</b> (24%)	<b>Friday • Tuesday</b> (48%)	<b>August • March</b> (36%)



## House District 93 Distracted Driving-Related Crashes

Interstate Crashes

Non-interstate Crashes

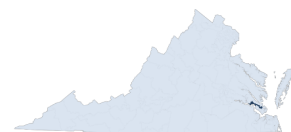
● Fatal

● Fatal

● Serious Injury

● Serious Injury

The blue gradient represents the density of all distracted driving-related crashes.



Available Crash Data - Calendar Year (CY)	CY 2018	CY 2019	CY 2020	CY 2021
Total Crashes	1367	1207	920	1053
Fatal Crashes	5	11	4	2
Injury Crashes	557	517	366	385
Distracted Driving-Related Fatal Crashes	1	1	1	0
Percent of Distracted Driving-Related Fatal Crashes to Total Fatal Crashes	20%	9%	25%	0%
Distracted Driving-Related Injury Crashes	119	120	80	113
Percent of Distracted Driving-Related Injury Crashes to Total Injury Crashes	21%	23%	22%	29%