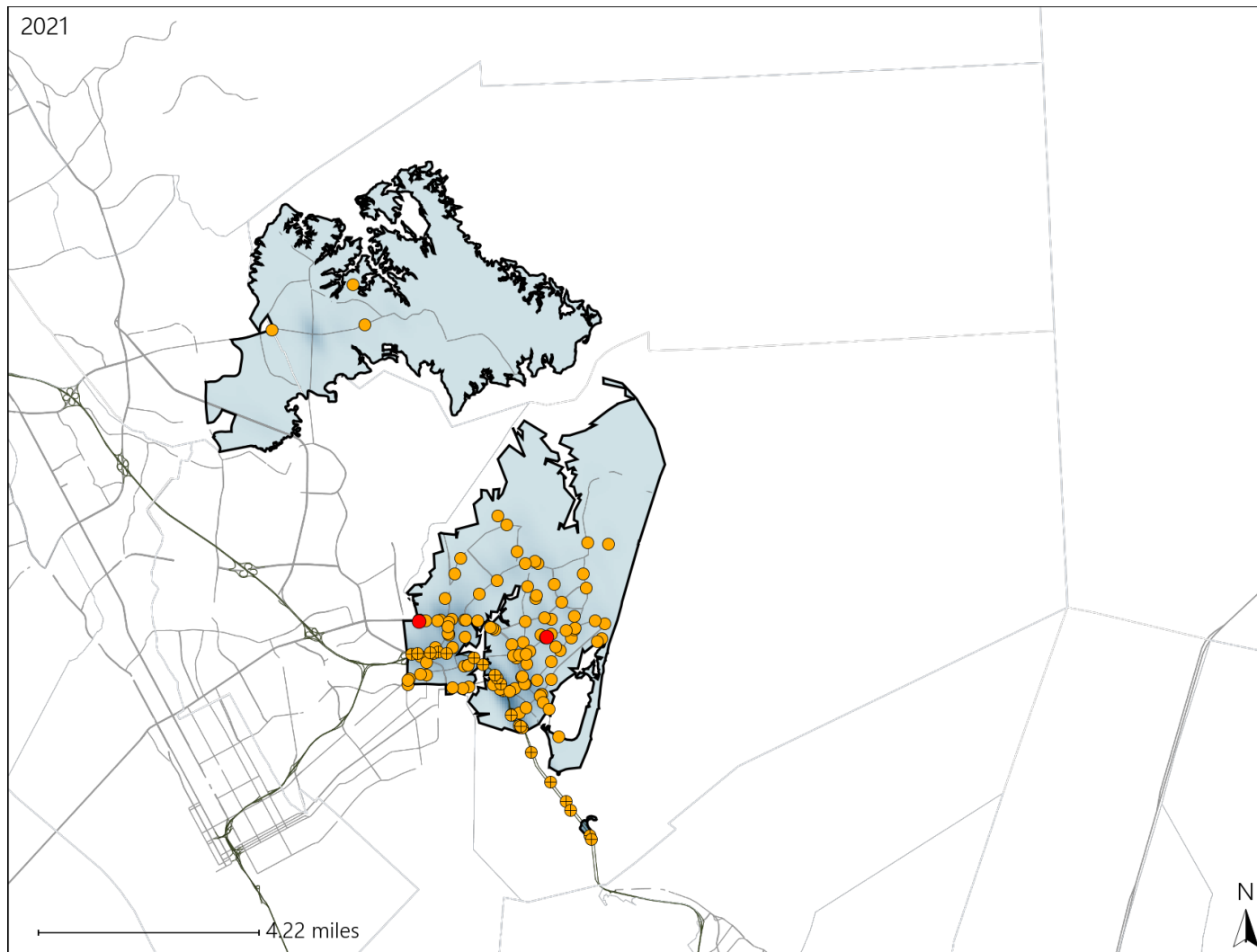


Virginia House District 91 Crash Statistics

Report Generated April, 2022

	Count	Highest Time Period(s)	Highest Day(s)	Highest Month(s)
Fatal Crashes	2	6:00am - 8:59am	Thursday • Tuesday	April • March
Resulting Fatalities	2	6:00pm - 8:59pm (100%)	(100%)	(100%)
Serious Injury Crashes	132	3:00pm - 5:59pm (27%)	Saturday (19%)	March (12%)



House District 91 Crashes

Interstate Crashes

- Fatal
- Serious Injury

Non-interstate Crashes

- Fatal
- Serious Injury

The blue gradient represents the density of all crashes.

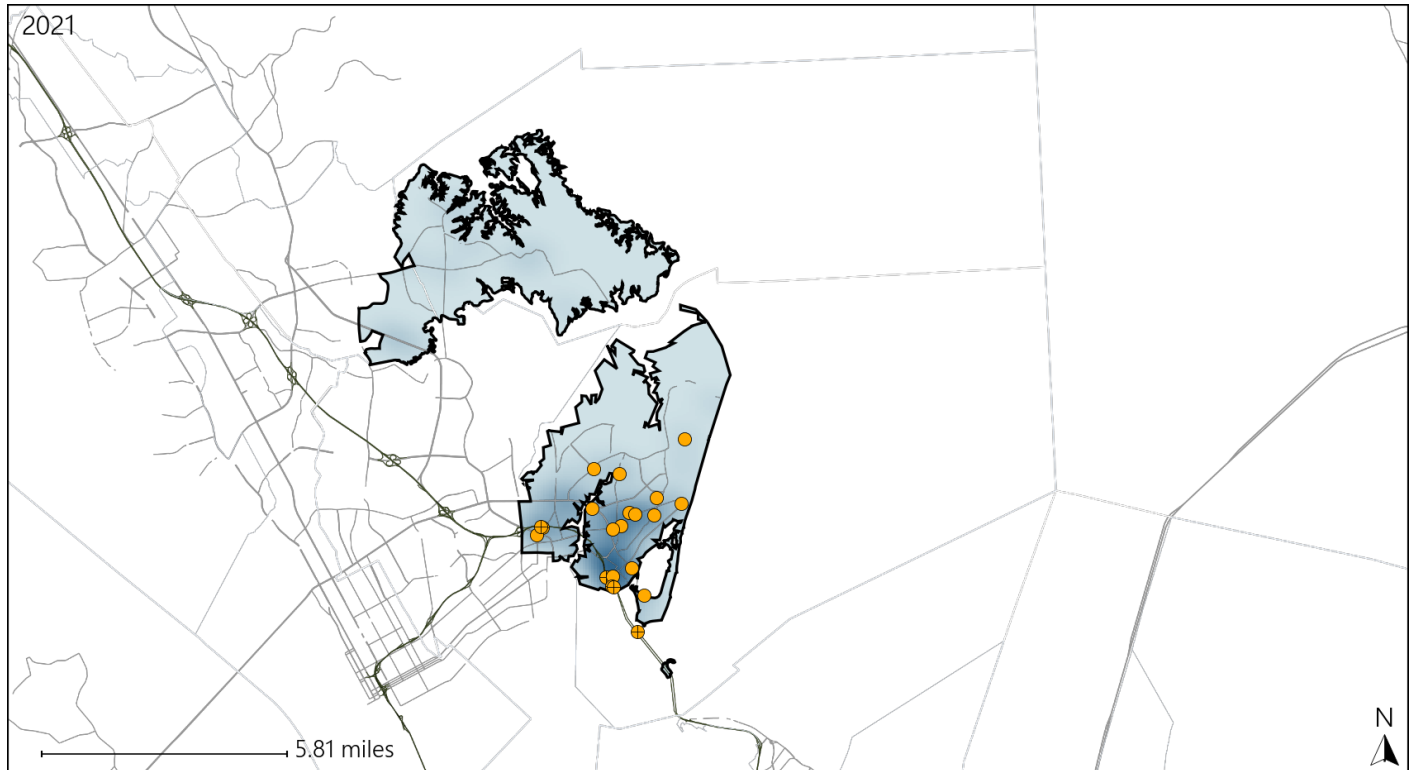


Available Crash Data - Calendar Year (CY)	CY 2018	CY 2019	CY 2020	CY 2021
Total Crashes	1241	1305	1296	1534
Fatal Crashes	1	5	7	2
Injury Crashes	572	656	653	826

Virginia House District 91 Alcohol Crash Statistics

Report Generated April, 2022

	Count	Highest Time Period(s)	Highest Day(s)	Highest Month(s)
Fatal Crashes	0	-	-	-
Resulting Fatalities	0	-	-	-
Serious Injury Crashes	21	Midnight - 2:59am (38%)	Sunday (29%)	April (24%)



House District 91 Alcohol-Related Crashes

Interstate Crashes

Non-interstate Crashes

- Fatal
- Serious Injury

- Fatal
- Serious Injury

The blue gradient represents the density of all alcohol-related crashes.



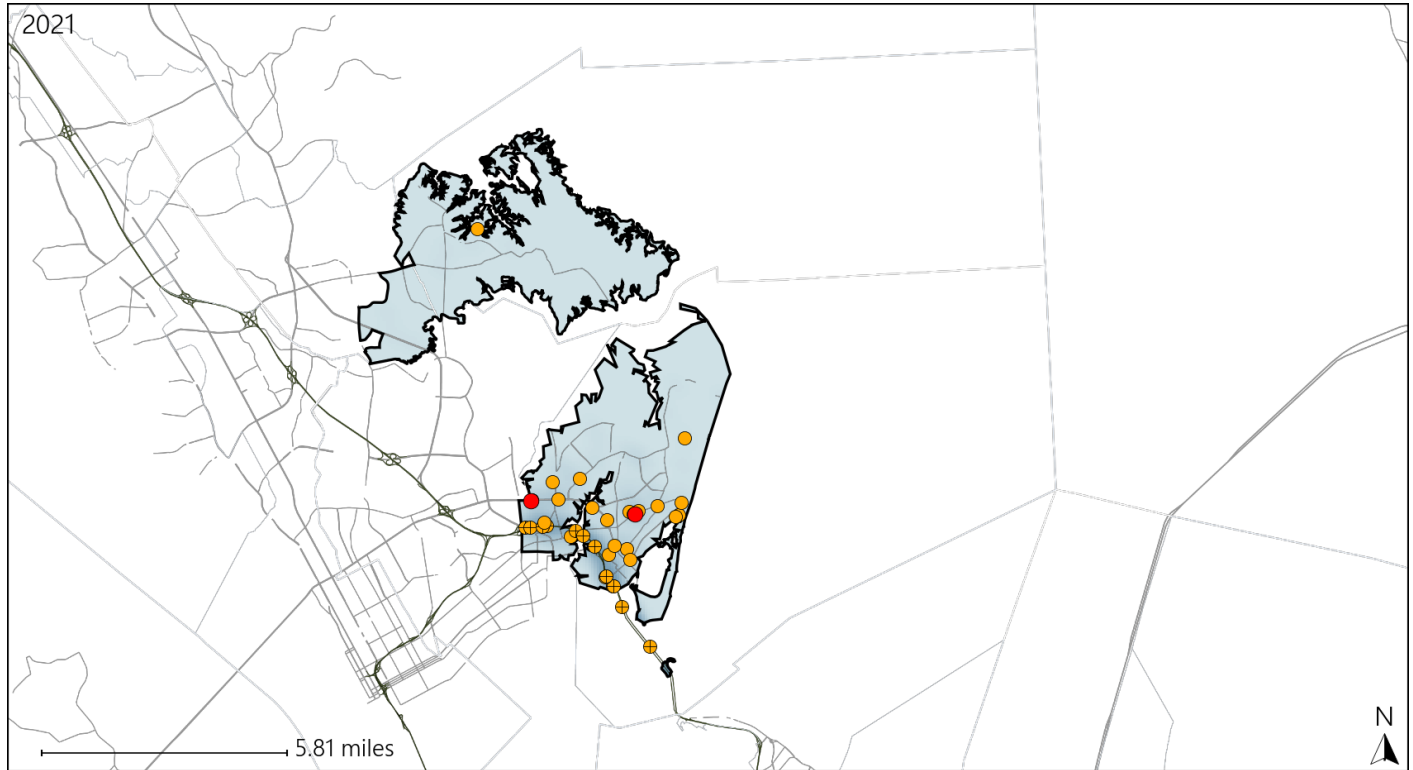
Available Crash Data - Calendar Year (CY)	CY 2018	CY 2019	CY 2020	CY 2021
Total Crashes	1241	1305	1296	1534
Fatal Crashes	1	5	7	2
Injury Crashes	572	656	653	826
Alcohol-Related Fatal Crashes	0	3	3	0
Percent of Alcohol-Related Fatal Crashes to Total Fatal Crashes	0%	60%	43%	0%
Alcohol-Related Injury Crashes	37	50	39	50
Percent of Alcohol-Related Injury Crashes to Total Injury Crashes	6%	8%	6%	6%

Report of Crashes for January 1st - December 31st, 2021

Virginia House District 91 Speed Crash Statistics

Report Generated April, 2022

	Count	Highest Time Period(s)	Highest Day(s)	Highest Month(s)
Fatal Crashes	2	6:00am - 8:59am	Thursday • Tuesday	April • March
Resulting Fatalities	2	6:00pm - 8:59pm (100%)	(100%)	(100%)
Serious Injury Crashes	36	Midnight - 2:59am (31%)	Saturday • Sunday (44%)	April (17%)



House District 91 Speed-Related Crashes

Interstate Crashes

- Fatal
- Serious Injury

Non-interstate Crashes

- Fatal
- Serious Injury

The blue gradient represents the density of all speed-related crashes.

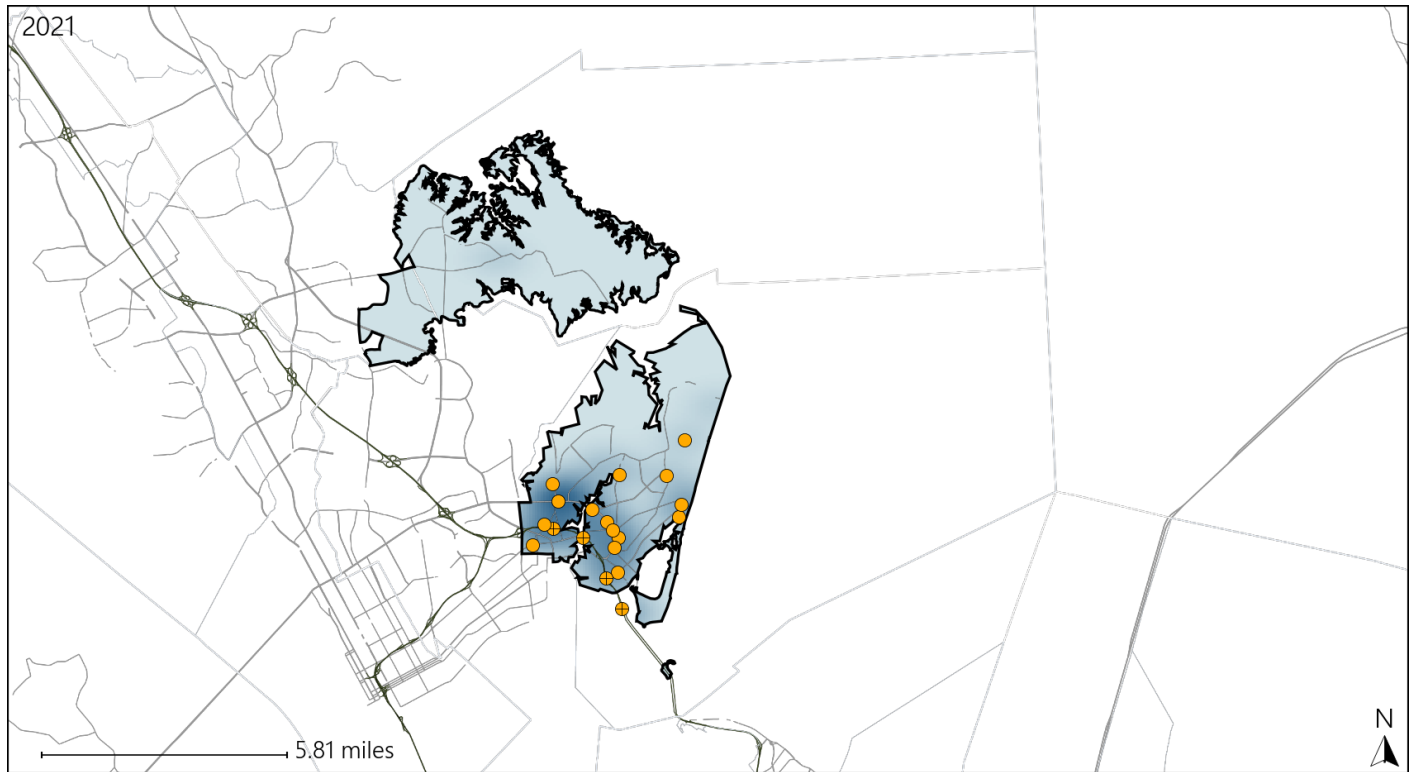


Available Crash Data - Calendar Year (CY)	CY 2018	CY 2019	CY 2020	CY 2021
Total Crashes	1241	1305	1296	1534
Fatal Crashes	1	5	7	2
Injury Crashes	572	656	653	826
Speed-Related Fatal Crashes	0	1	4	2
Percent of Speed-Related Fatal Crashes to Total Fatal Crashes	0%	20%	57%	100%
Speed-Related Injury Crashes	99	108	121	121
Percent of Speed-Related Injury Crashes to Total Injury Crashes	17%	16%	19%	15%

Virginia House District 91 Unrestrained Crash Statistics

Report Generated April, 2022

	Count	Highest Time Period(s)	Highest Day(s)	Highest Month(s)
Fatal Crashes	0	-	-	-
Unrestrained Fatalities	0	-	-	-
Serious Injury Crashes	19	3:00am - 5:59am Midnight - 2:59am (42%)	Sunday (32%)	March (21%)



House District 91 Unrestrained-Related Crashes

Interstate Crashes

Non-interstate Crashes

● Fatal

● Fatal

⊕ Serious Injury

⊕ Serious Injury

The blue gradient represents the density of all unrestrained-related crashes.

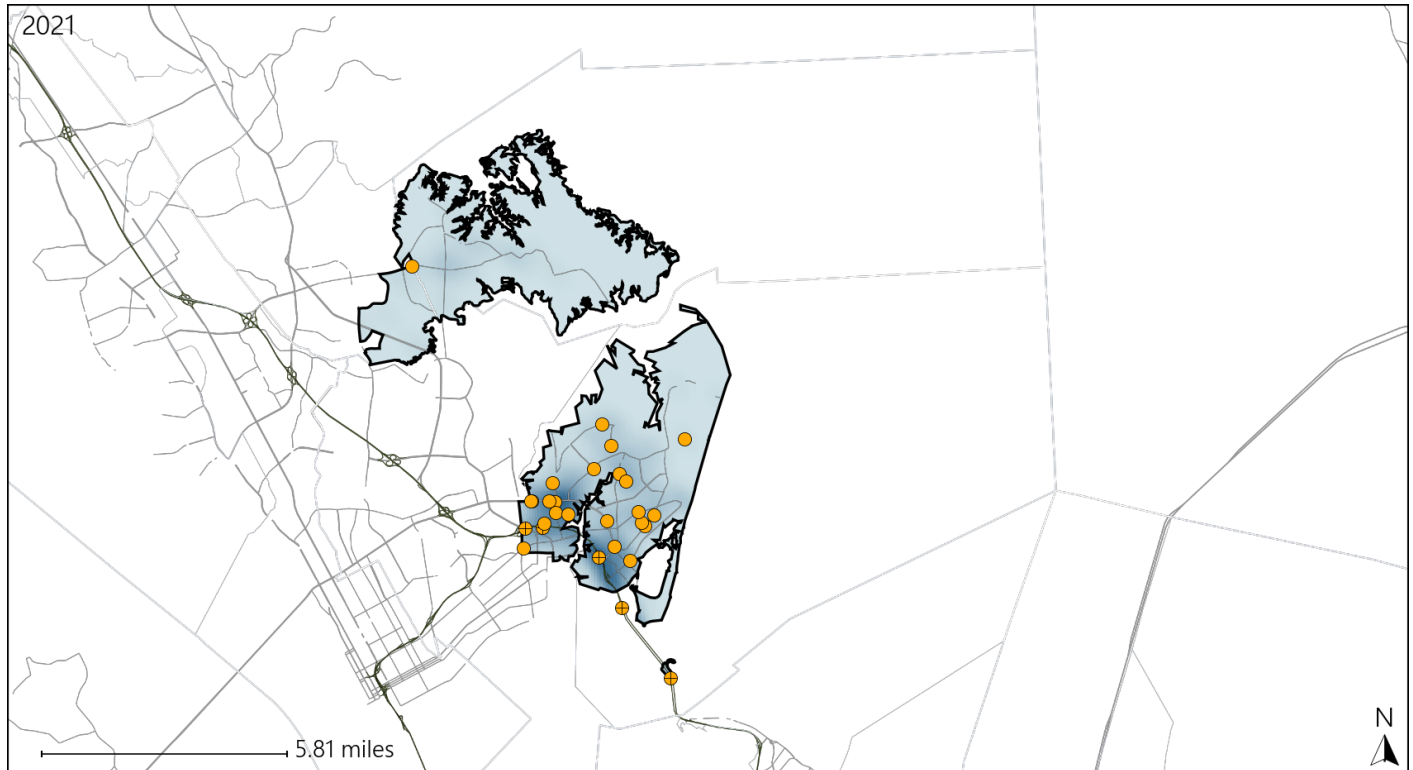


Available Crash Data - Calendar Year (CY)	CY 2018	CY 2019	CY 2020	CY 2021
Total Crashes	1241	1305	1296	1534
Fatalities	1	5	7	2
Injuries	914	1105	1107	1392
Unrestrained Fatalities	1	2	4	0
Percent of Unrestrained Fatalities to Total Fatalities	100%	40%	57%	0%
Unrestrained Injuries	42	24	33	44
Percent of Unrestrained Injuries to Total Injuries	5%	2%	3%	3%

Virginia House District 91 Distracted Driving Crash Statistics

Report Generated April, 2022

	Count	Highest Time Period(s)	Highest Day(s)	Highest Month(s)
Fatal Crashes	0	-	-	-
Resulting Fatalities	0	-	-	-
Serious Injury Crashes	28	3:00pm - 5:59pm (25%)	Friday • Saturday (36%)	March (18%)



House District 91 Distracted Driving-Related Crashes

Interstate Crashes

Non-interstate Crashes

- Fatal
- Serious Injury

- Fatal
- Serious Injury

The blue gradient represents the density of all distracted driving-related crashes.



Available Crash Data - Calendar Year (CY)	CY 2018	CY 2019	CY 2020	CY 2021
Total Crashes	1241	1305	1296	1534
Fatal Crashes	1	5	7	2
Injury Crashes	572	656	653	826
Distracted Driving-Related Fatal Crashes	0	2	2	0
Percent of Distracted Driving-Related Fatal Crashes to Total Fatal Crashes	0%	40%	29%	0%
Distracted Driving-Related Injury Crashes	132	121	130	160
Percent of Distracted Driving-Related Injury Crashes to Total Injury Crashes	23%	18%	20%	19%