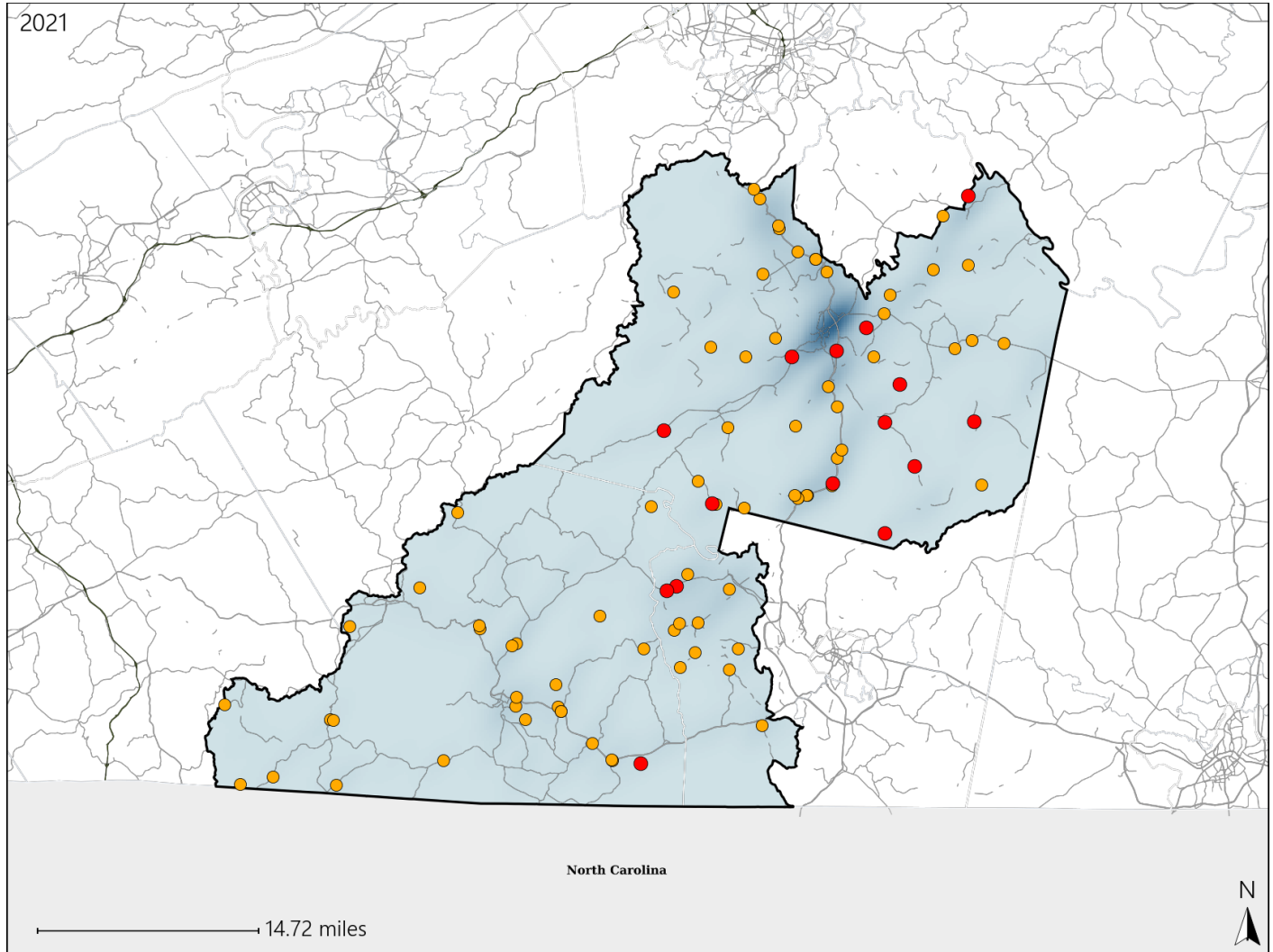


# Virginia House District 9 Crash Statistics

Report Generated April, 2022

	Count	Highest Time Period(s)	Highest Day(s)	Highest Month(s)
<b>Fatal Crashes</b>	<b>15</b>	6:00am - 8:59am	Friday	June • November
<b>Resulting Fatalities</b>	<b>16</b>	6:00pm - 8:59pm (40%)	(33%)	(40%)
<b>Serious Injury Crashes</b>	<b>75</b>	Noon - 2:59pm (27%)	Thursday (21%)	December (17%)



## House District 9 Crashes

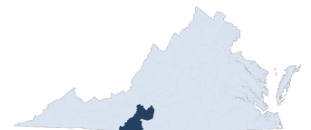
### Interstate Crashes

- Fatal
- Serious Injury

### Non-interstate Crashes

- Fatal
- Serious Injury

The blue gradient represents the density of all crashes.

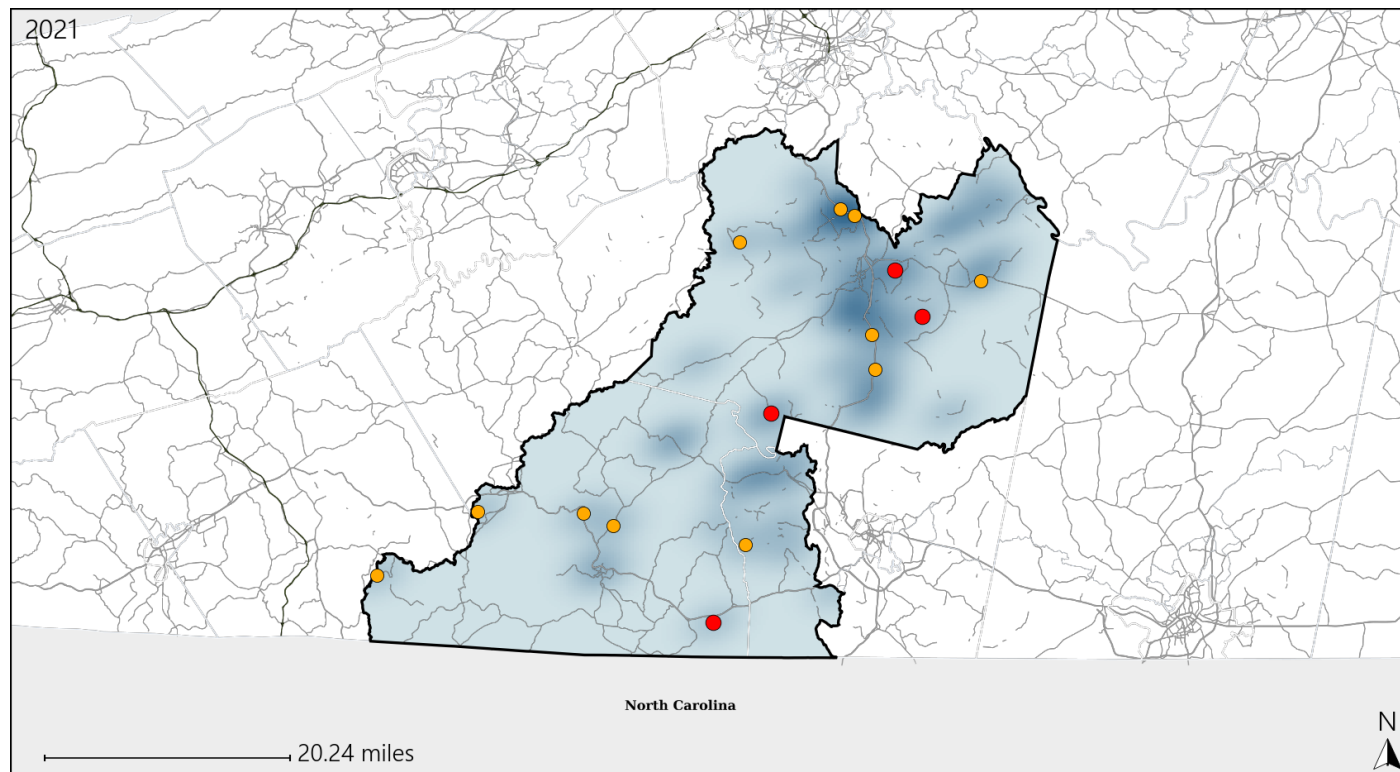


Available Crash Data - Calendar Year (CY)	CY 2018	CY 2019	CY 2020	CY 2021
Total Crashes	1069	1028	1006	972
Fatal Crashes	11	14	15	15
Injury Crashes	397	414	331	300

# Virginia House District 9 Alcohol Crash Statistics

Report Generated April, 2022

	Count	Highest Time Period(s)	Highest Day(s)	Highest Month(s)
<b>Fatal Crashes</b>	<b>4</b>	<b>3:00pm - 5:59pm</b>	<b>Friday</b>	<b>April</b>
<b>Resulting Fatalities</b>	<b>4</b>	<b>(50%)</b>	<b>(50%)</b>	<b>(50%)</b>
<b>Serious Injury Crashes</b>	<b>11</b>	<b>6:00pm - 8:59pm</b>	<b>Sunday</b>	<b>December - May</b>
		<b>(36%)</b>	<b>(45%)</b>	<b>(54%)</b>



## House District 9 Alcohol-Related Crashes

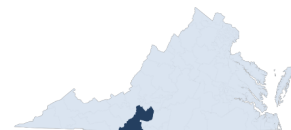
Interstate Crashes

Non-interstate Crashes

- Fatal
- Serious Injury

- Fatal
- Serious Injury

The blue gradient represents the density of all alcohol-related crashes.

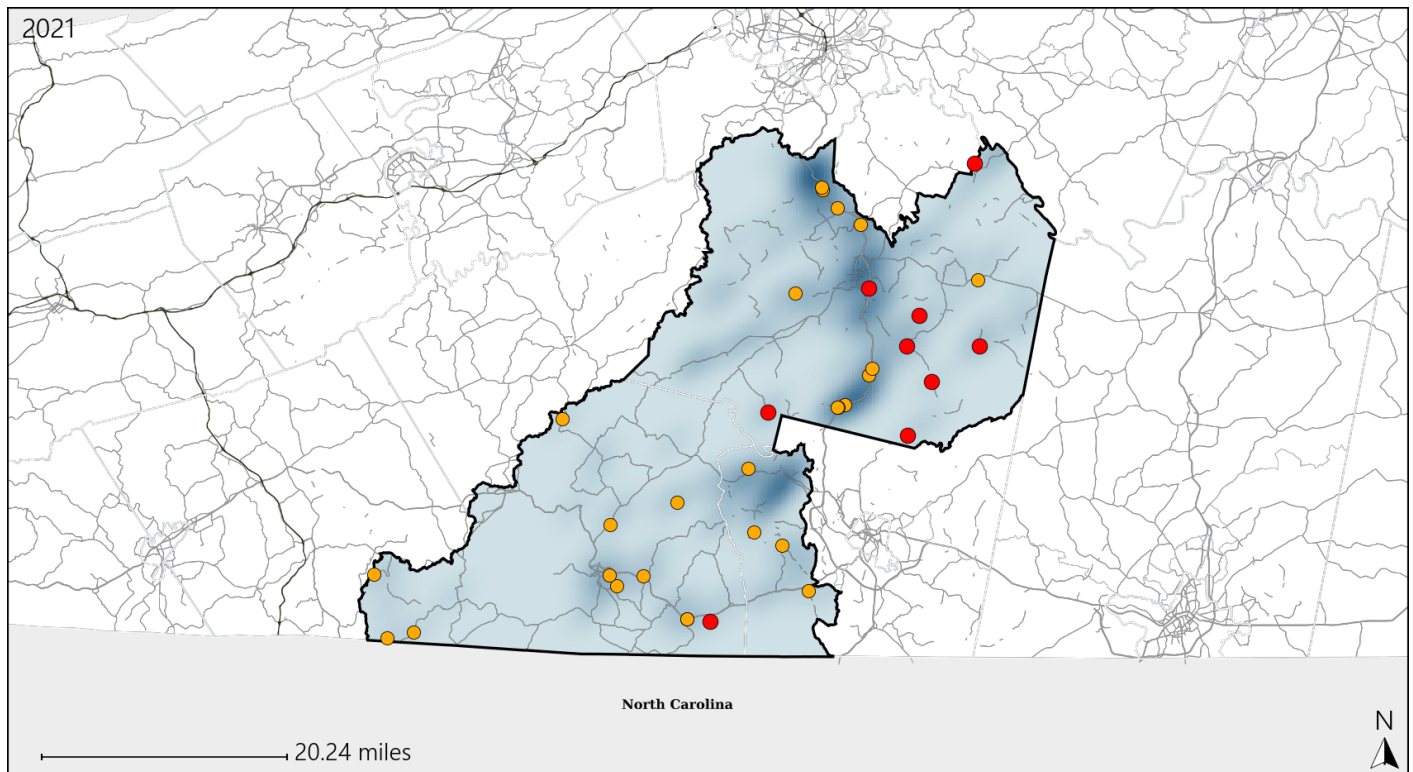


Available Crash Data - Calendar Year (CY)	CY 2018	CY 2019	CY 2020	CY 2021
Total Crashes	1069	1028	1006	972
Fatal Crashes	11	14	15	15
Injury Crashes	397	414	331	300
Alcohol-Related Fatal Crashes	2	6	5	4
Percent of Alcohol-Related Fatal Crashes to Total Fatal Crashes	18%	43%	33%	27%
Alcohol-Related Injury Crashes	29	40	33	28
Percent of Alcohol-Related Injury Crashes to Total Injury Crashes	7%	10%	10%	9%

# Virginia House District 9 Speed Crash Statistics

Report Generated April, 2022

	Count	Highest Time Period(s)	Highest Day(s)	Highest Month(s)
<b>Fatal Crashes</b>	<b>9</b>	<b>6:00pm - 8:59pm</b>	<b>Friday</b>	<b>July - June</b>
<b>Resulting Fatalities</b>	<b>9</b>	<b>(33%)</b>	<b>(33%)</b>	<b>(44%)</b>
<b>Serious Injury Crashes</b>	<b>26</b>	<b>3:00pm - 5:59pm</b>	<b>Thursday</b>	<b>December</b>
		<b>Noon - 2:59pm</b>	<b>(23%)</b>	<b>(15%)</b>
		<b>(54%)</b>		



## House District 9 Speed-Related Crashes

Interstate Crashes

Non-interstate Crashes

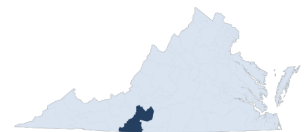
● Fatal

● Fatal

⊕ Serious Injury

⊕ Serious Injury

The blue gradient represents the density of all speed-related crashes.

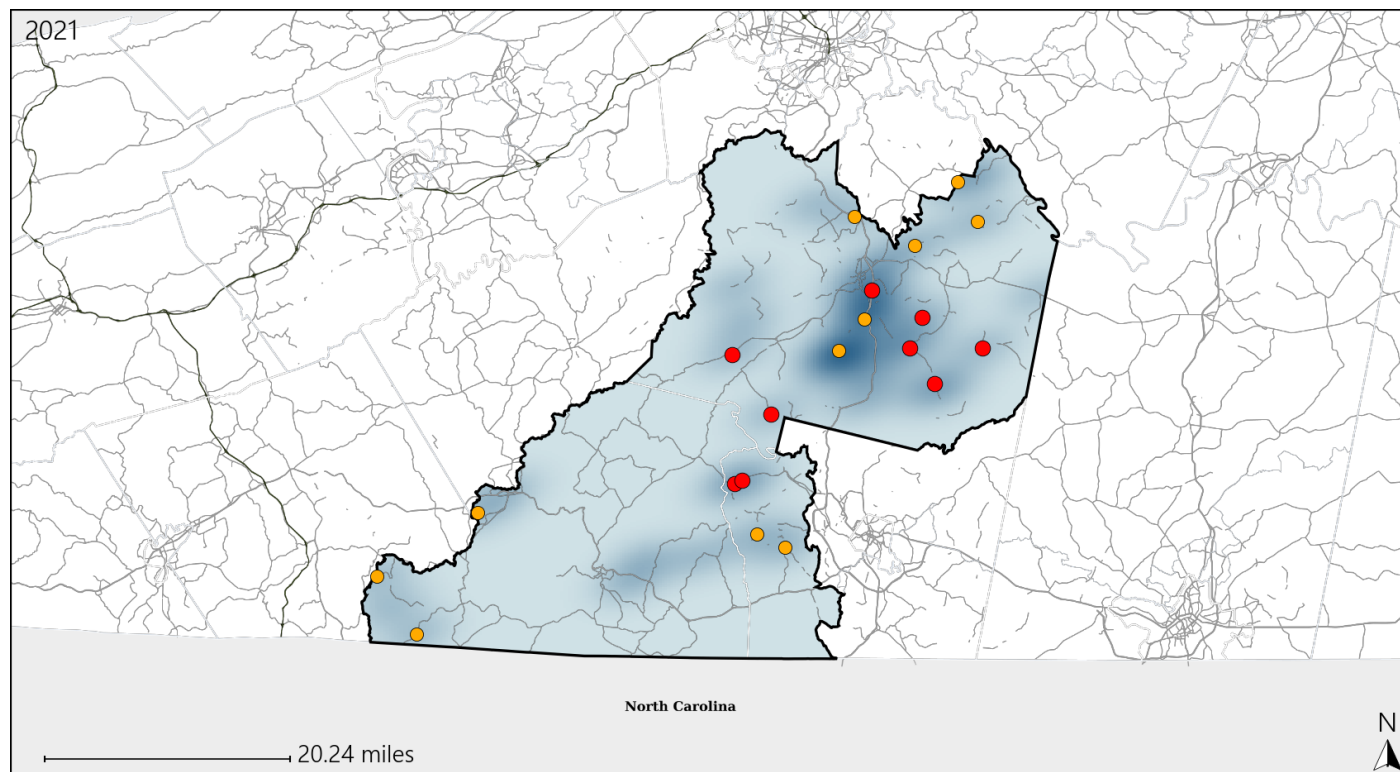


Available Crash Data - Calendar Year (CY)	CY 2018	CY 2019	CY 2020	CY 2021
Total Crashes	1069	1028	1006	972
Fatal Crashes	11	14	15	15
Injury Crashes	397	414	331	300
Speed-Related Fatal Crashes	4	7	5	9
Percent of Speed-Related Fatal Crashes to Total Fatal Crashes	36%	50%	33%	60%
Speed-Related Injury Crashes	120	99	79	63
Percent of Speed-Related Injury Crashes to Total Injury Crashes	30%	24%	24%	21%

# Virginia House District 9 Unrestrained Crash Statistics

Report Generated April, 2022

	Count	Highest Time Period(s)	Highest Day(s)	Highest Month(s)
<b>Fatal Crashes</b>	<b>9</b>	<b>3:00pm - 5:59pm</b>	<b>Friday • Saturday</b>	<b>November</b>
<b>Unrestrained Fatalities</b>	<b>9</b>	<b>6:00am - 8:59am</b> (44%)	<b>(44%)</b>	<b>(33%)</b>
<b>Serious Injury Crashes</b>	<b>11</b>	<b>6:00pm - 8:59pm</b> (36%)	<b>Thursday</b> (27%)	<b>December • July</b> (54%)



## House District 9 Unrestrained-Related Crashes

Interstate Crashes

Non-interstate Crashes

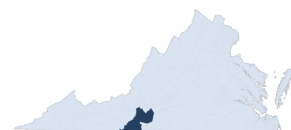
● Fatal

● Fatal

● Serious Injury

● Serious Injury

The blue gradient represents the density of all unrestrained-related crashes.



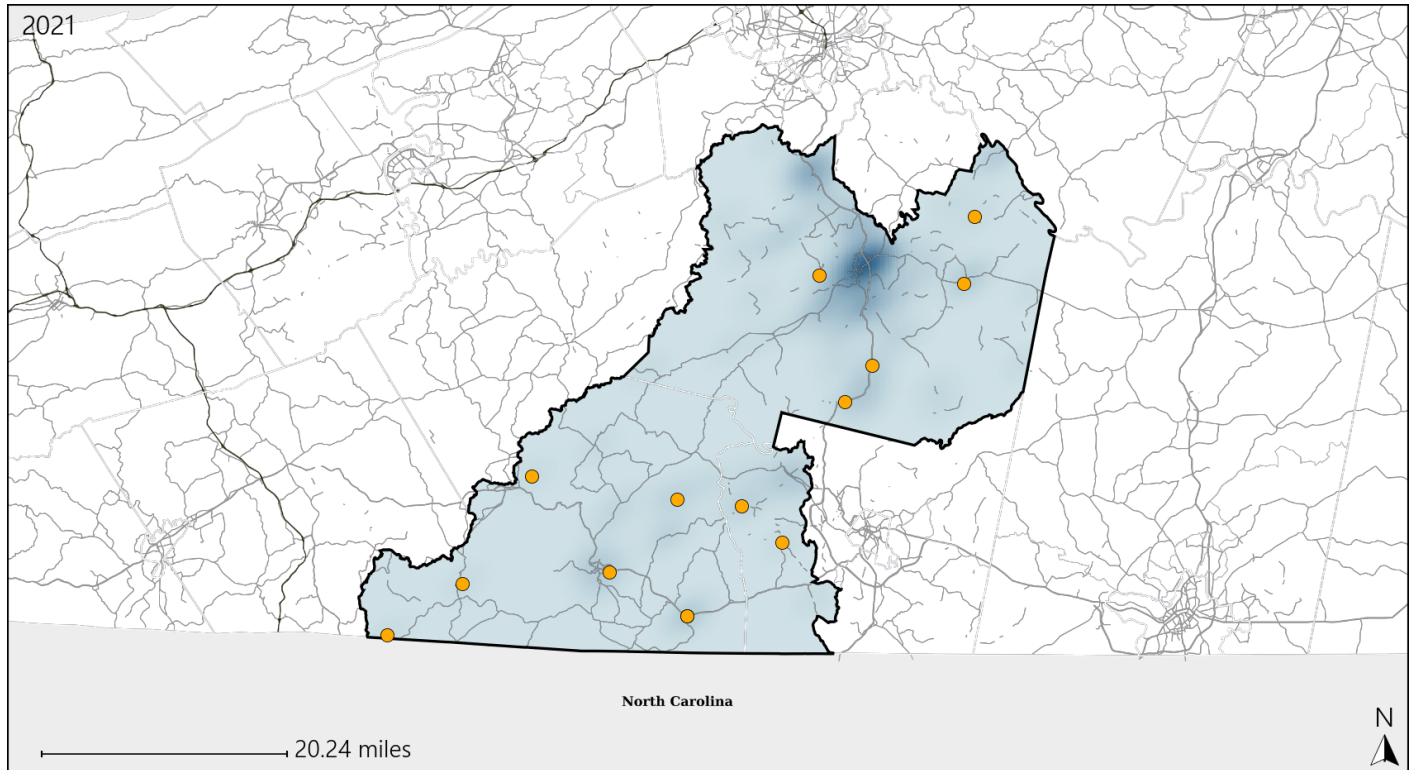
Available Crash Data - Calendar Year (CY)	CY 2018	CY 2019	CY 2020	CY 2021
Total Crashes	1069	1028	1006	972
Fatalities	12	17	16	16
Injuries	593	614	449	407
Unrestrained Fatalities	5	6	8	9
Percent of Unrestrained Fatalities to Total Fatalities	42%	35%	50%	56%
Unrestrained Injuries	53	62	44	34
Percent of Unrestrained Injuries to Total Injuries	9%	10%	10%	8%



# Virginia House District 9 Distracted Driving Crash Statistics

Report Generated April, 2022

	Count	Highest Time Period(s)	Highest Day(s)	Highest Month(s)
<b>Fatal Crashes</b>	<b>0</b>	-	-	-
<b>Resulting Fatalities</b>	<b>0</b>	-	-	-
<b>Serious Injury Crashes</b>	<b>14</b>	<b>3:00pm - 5:59pm</b> (36%)	<b>Thursday</b> (43%)	<b>August • November</b> (42%)



## House District 9 Distracted Driving-Related Crashes

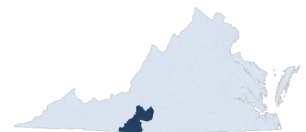
Interstate Crashes

Non-interstate Crashes

- Fatal
- Serious Injury

- Fatal
- Serious Injury

The blue gradient represents the density of all distracted driving-related crashes.



Available Crash Data - Calendar Year (CY)	CY 2018	CY 2019	CY 2020	CY 2021
Total Crashes	1069	1028	1006	972
Fatal Crashes	11	14	15	15
Injury Crashes	397	414	331	300
Distracted Driving-Related Fatal Crashes	2	2	3	0
Percent of Distracted Driving-Related Fatal Crashes to Total Fatal Crashes	18%	14%	20%	0%
Distracted Driving-Related Injury Crashes	83	85	62	41
Percent of Distracted Driving-Related Injury Crashes to Total Injury Crashes	21%	21%	19%	14%