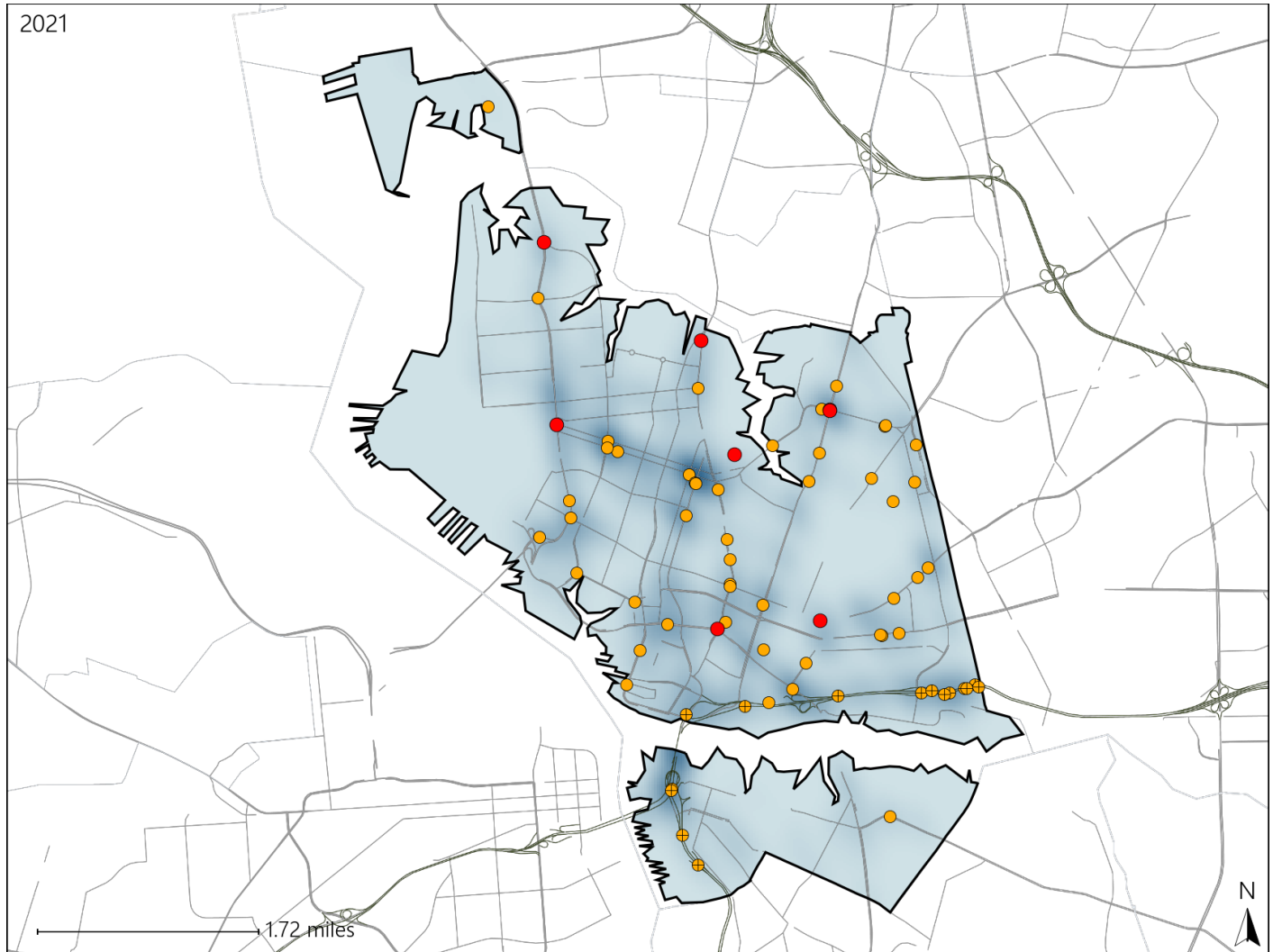


# Virginia House District 89 Crash Statistics

Report Generated April, 2022

	Count	Highest Time Period(s)	Highest Day(s)	Highest Month(s)
<b>Fatal Crashes</b>	<b>8</b>	<b>9:00pm - 11:59pm</b>	<b>Sunday</b>	<b>July</b>
<b>Resulting Fatalities</b>	<b>9</b>	<b>(38%)</b>	<b>(50%)</b>	<b>(25%)</b>
<b>Serious Injury Crashes</b>	<b>63</b>	<b>3:00pm - 5:59pm</b>	<b>Tuesday</b>	<b>May • November</b>
		<b>(24%)</b>	<b>(22%)</b>	<b>(28%)</b>



## House District 89 Crashes

Interstate Crashes

- Fatal
- Serious Injury

Non-interstate Crashes

- Fatal
- Serious Injury

The blue gradient represents the density of all crashes.



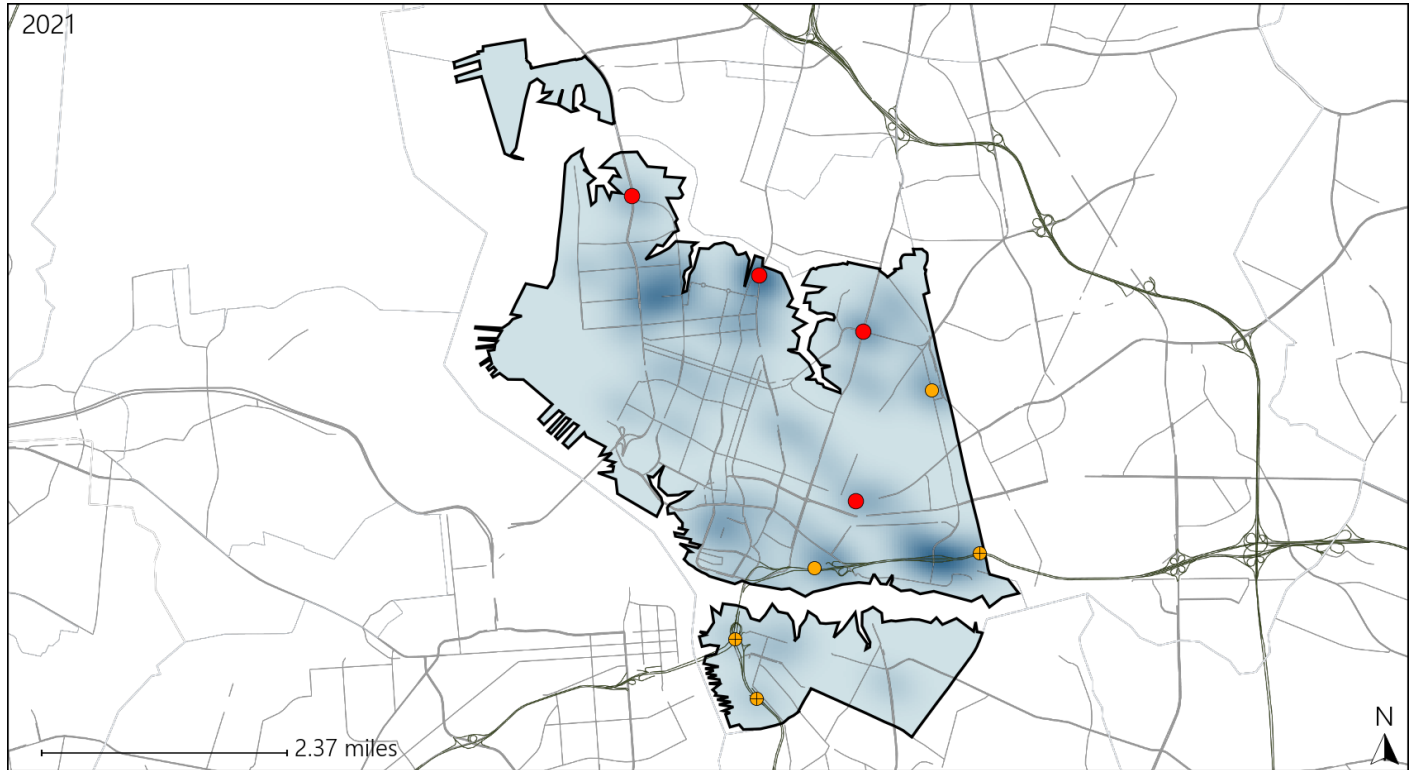
Available Crash Data - Calendar Year (CY)	CY 2018	CY 2019	CY 2020	CY 2021
Total Crashes	1373	1448	1419	1550
Fatal Crashes	6	9	5	8
Injury Crashes	463	492	502	539

Report of Crashes for January 1<sup>st</sup> - December 31<sup>st</sup>, 2021

# Virginia House District 89 Alcohol Crash Statistics

Report Generated April, 2022

	Count	Highest Time Period(s)	Highest Day(s)	Highest Month(s)
<b>Fatal Crashes</b>	<b>4</b>	9:00pm - 11:59pm	Sunday	July • May
<b>Resulting Fatalities</b>	<b>5</b>	Midnight - 2:59am (100%)	(75%)	(50%)
<b>Serious Injury Crashes</b>	<b>5</b>	9:00pm - 11:59pm (60%)	Thursday (60%)	June • May (80%)



## House District 89 Alcohol-Related Crashes

Interstate Crashes

Non-interstate Crashes

- Fatal
- Serious Injury

- Fatal
- Serious Injury

The blue gradient represents the density of all alcohol-related crashes.



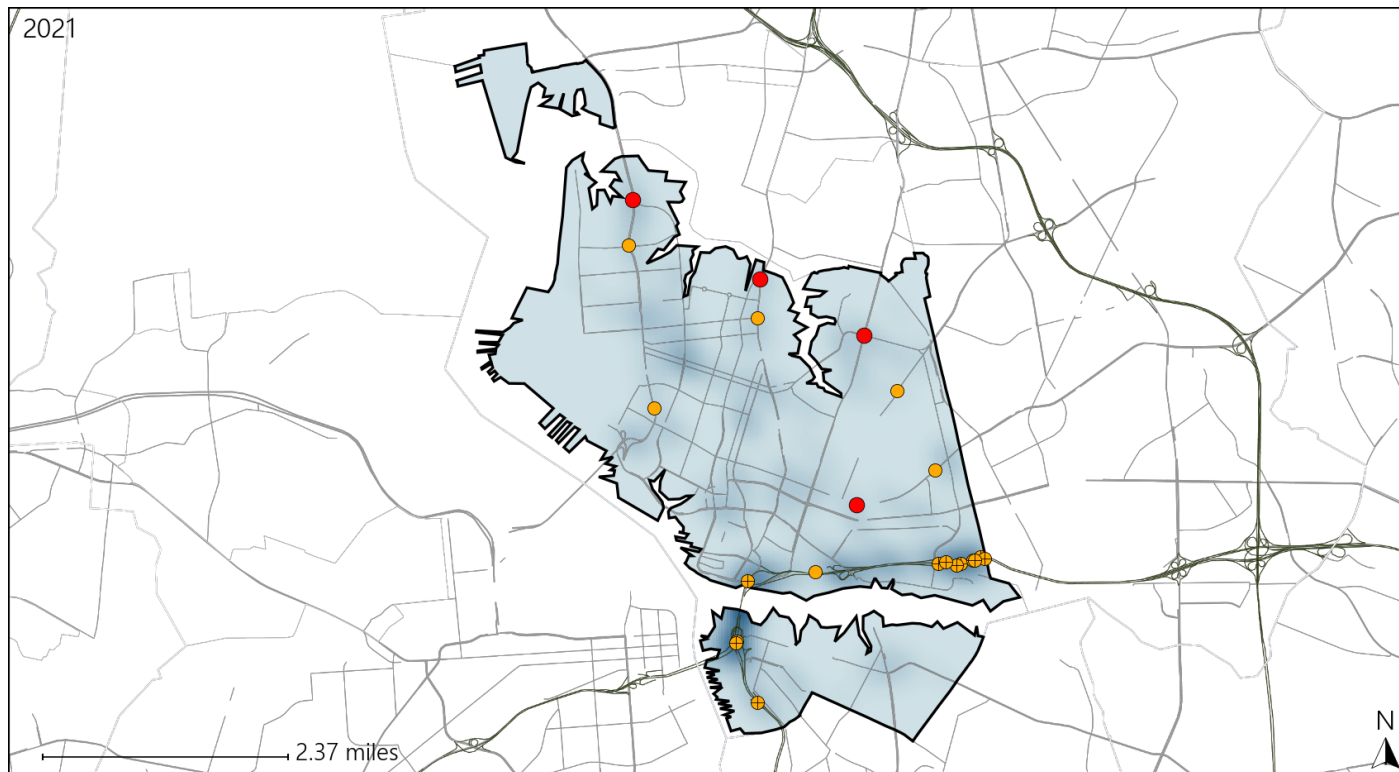
Available Crash Data - Calendar Year (CY)	CY 2018	CY 2019	CY 2020	CY 2021
Total Crashes	1373	1448	1419	1550
Fatal Crashes	6	9	5	8
Injury Crashes	463	492	502	539
Alcohol-Related Fatal Crashes	0	2	1	4
Percent of Alcohol-Related Fatal Crashes to Total Fatal Crashes	0%	22%	20%	50%
Alcohol-Related Injury Crashes	34	24	35	29
Percent of Alcohol-Related Injury Crashes to Total Injury Crashes	7%	5%	7%	5%

Report of Crashes for January 1<sup>st</sup> - December 31<sup>st</sup>, 2021

# Virginia House District 89 Speed Crash Statistics

Report Generated April, 2022

	Count	Highest Time Period(s)	Highest Day(s)	Highest Month(s)
<b>Fatal Crashes</b>	<b>4</b>	<b>9:00pm - 11:59pm</b>	<b>Sunday</b>	<b>July • May</b>
<b>Resulting Fatalities</b>	<b>5</b>	<b>Midnight - 2:59am</b> (100%)	<b>(75%)</b>	<b>(50%)</b>
<b>Serious Injury Crashes</b>	<b>18</b>	<b>3:00pm - 5:59pm</b> (28%)	<b>Friday • Tuesday</b> (44%)	<b>November</b> (22%)



## House District 89 Speed-Related Crashes

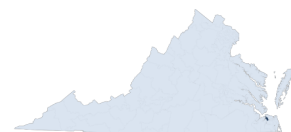
Interstate Crashes

- Fatal
- Serious Injury

Non-interstate Crashes

- Fatal
- Serious Injury

The blue gradient represents the density of all speed-related crashes.

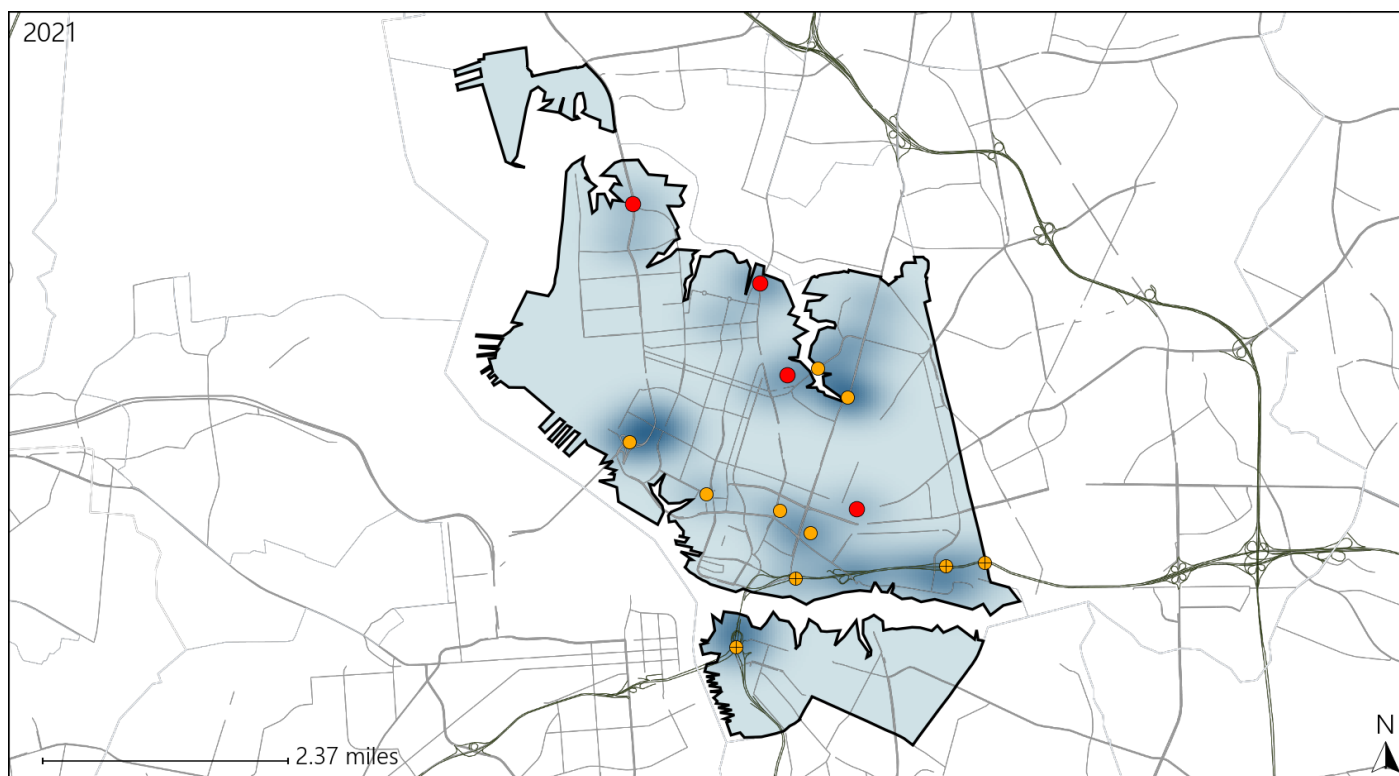


Available Crash Data - Calendar Year (CY)	CY 2018	CY 2019	CY 2020	CY 2021
Total Crashes	1373	1448	1419	1550
Fatal Crashes	6	9	5	8
Injury Crashes	463	492	502	539
Speed-Related Fatal Crashes	3	4	2	4
Percent of Speed-Related Fatal Crashes to Total Fatal Crashes	50%	44%	40%	50%
Speed-Related Injury Crashes	95	89	124	110
Percent of Speed-Related Injury Crashes to Total Injury Crashes	21%	18%	25%	20%

# Virginia House District 89 Unrestrained Crash Statistics

Report Generated April, 2022

	Count	Highest Time Period(s)	Highest Day(s)	Highest Month(s)
<b>Fatal Crashes</b>	<b>4</b>	<b>Midnight - 2:59am</b>	<b>Sunday</b>	<b>January • May</b>
<b>Unrestrained Fatalities</b>	<b>5</b>	<b>(50%)</b>	<b>(75%)</b>	<b>(50%)</b>
<b>Serious Injury Crashes</b>	<b>10</b>	<b>3:00am - 5:59am</b> <b>3:00pm - 5:59pm</b>	<b>Sunday • Tuesday</b>	<b>April • July</b>
		<b>(40%)</b>	<b>(60%)</b>	<b>(40%)</b>



## House District 89 Unrestrained-Related Crashes

Interstate Crashes

Non-interstate Crashes

● Fatal

● Fatal

⊕ Serious Injury

⊕ Serious Injury

The blue gradient represents the density of all unrestrained-related crashes.

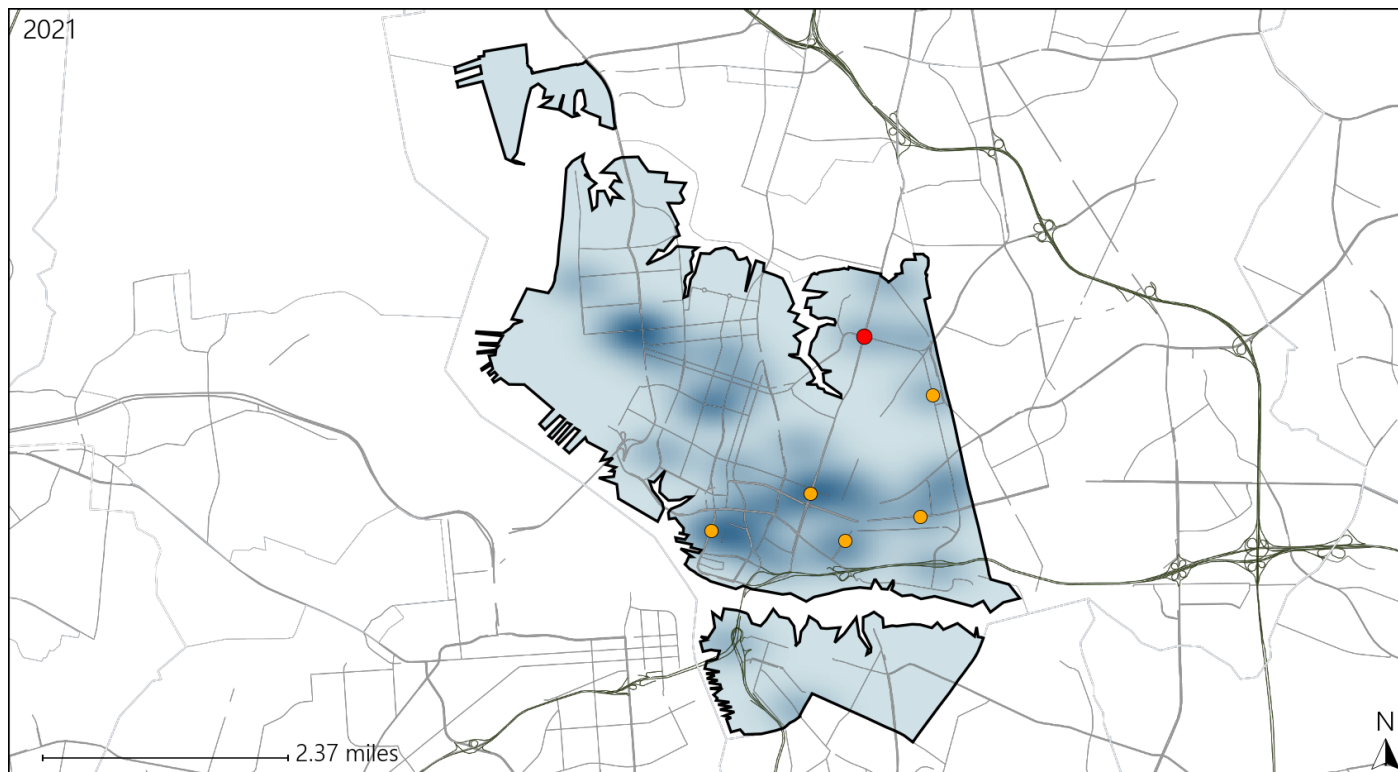


Available Crash Data - Calendar Year (CY)	CY 2018	CY 2019	CY 2020	CY 2021
Total Crashes	1373	1448	1419	1550
Fatalities	6	9	5	9
Injuries	698	743	780	828
Unrestrained Fatalities	0	5	1	5
Percent of Unrestrained Fatalities to Total Fatalities	0%	56%	20%	56%
Unrestrained Injuries	16	38	34	40
Percent of Unrestrained Injuries to Total Injuries	2%	5%	4%	5%

# Virginia House District 89 Pedestrian Crash Statistics

Report Generated April, 2022

	Count	Highest Time Period(s)	Highest Day(s)	Highest Month(s)
<b>Fatal Crashes</b>	<b>1</b>	<b>9:00pm - 11:59pm</b>	<b>Sunday</b>	<b>July</b>
<b>Pedestrian Fatalities</b>	<b>1</b>	<b>(100%)</b>	<b>(100%)</b>	<b>(100%)</b>
<b>Serious Injury Crashes</b>	<b>5</b>	<b>6:00pm - 8:59pm</b>	<b>Thursday</b>	<b>December • June</b>
		<b>(40%)</b>	<b>(40%)</b>	<b>(40%)</b>



## House District 89 Pedestrian-Related Crashes

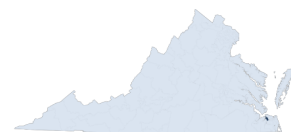
Interstate Crashes

- Fatal
- Serious Injury

Non-interstate Crashes

- Fatal
- Serious Injury

The blue gradient represents the density of all pedestrian-related crashes.



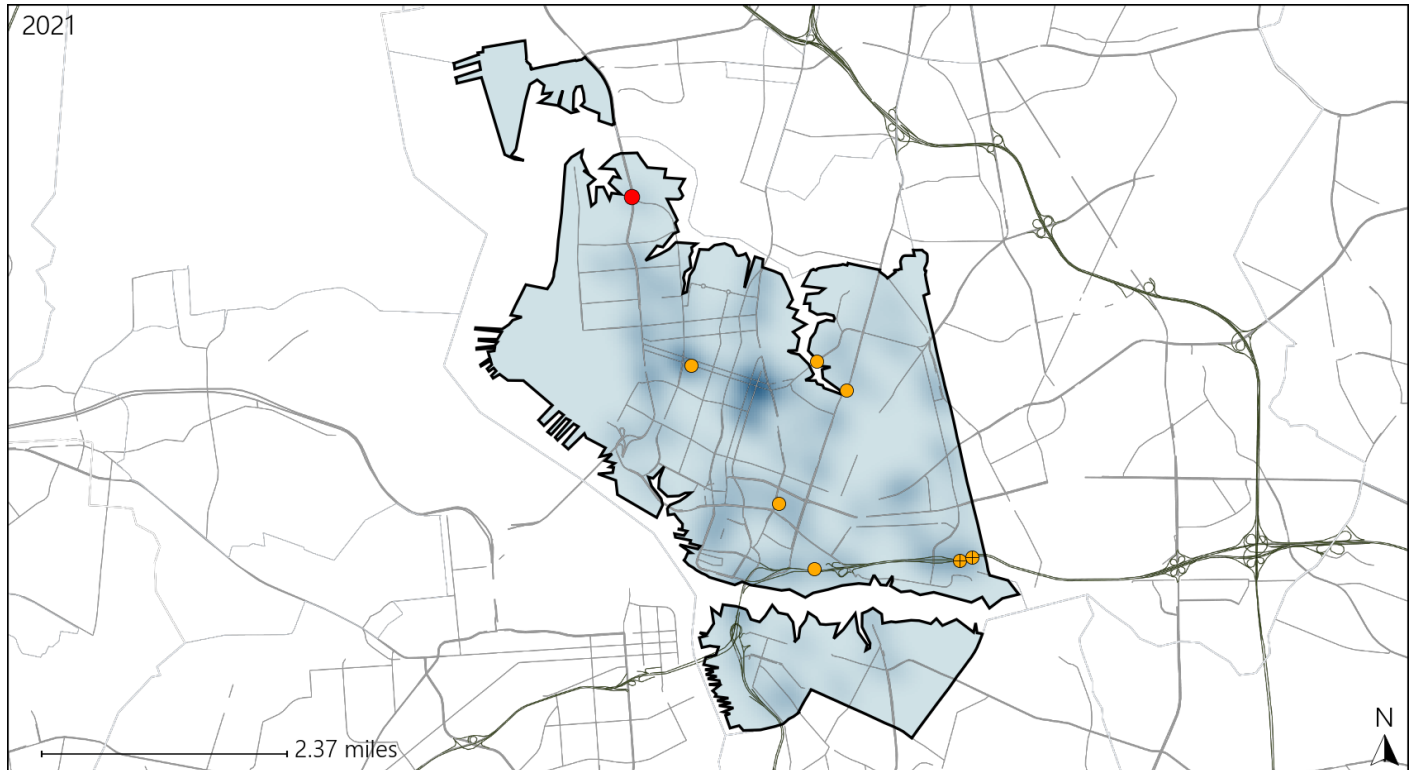
Available Crash Data - Calendar Year (CY)	CY 2018	CY 2019	CY 2020	CY 2021
Total Crashes	1373	1448	1419	1550
Fatal Crashes	6	9	5	8
Injury Crashes	463	492	502	539
Pedestrian-Related Fatal Crashes	3	2	0	1
Percent of Pedestrian-Related Fatal Crashes to Total Fatal Crashes	50%	22%	0%	13%
Pedestrian-Related Injury Crashes	39	33	27	33
Percent of Pedestrian-Related Injury Crashes to Total Injury Crashes	8%	7%	5%	6%



# Virginia House District 89 Distracted Driving Crash Statistics

Report Generated April, 2022

	Count	Highest Time Period(s)	Highest Day(s)	Highest Month(s)
<b>Fatal Crashes</b>	<b>1</b>	<b>9:00pm - 11:59pm</b>	<b>Sunday</b>	<b>September</b>
<b>Resulting Fatalities</b>	<b>1</b>	<b>(100%)</b>	<b>(100%)</b>	<b>(100%)</b>
<b>Serious Injury Crashes</b>	<b>7</b>	<b>3:00pm - 5:59pm</b>	<b>Saturday • Tuesday</b>	<b>April • February</b>
		<b>(43%)</b>	<b>(58%)</b>	<b>(28%)</b>



## House District 89 Distracted Driving-Related Crashes

Interstate Crashes

Non-interstate Crashes

- Fatal
- Serious Injury

- Fatal
- Serious Injury

The blue gradient represents the density of all distracted driving-related crashes.



Available Crash Data - Calendar Year (CY)	CY 2018	CY 2019	CY 2020	CY 2021
Total Crashes	1373	1448	1419	1550
Fatal Crashes	6	9	5	8
Injury Crashes	463	492	502	539
Distracted Driving-Related Fatal Crashes	0	0	1	1
Percent of Distracted Driving-Related Fatal Crashes to Total Fatal Crashes	0%	0%	20%	13%
Distracted Driving-Related Injury Crashes	59	81	65	60
Percent of Distracted Driving-Related Injury Crashes to Total Injury Crashes	13%	16%	13%	11%