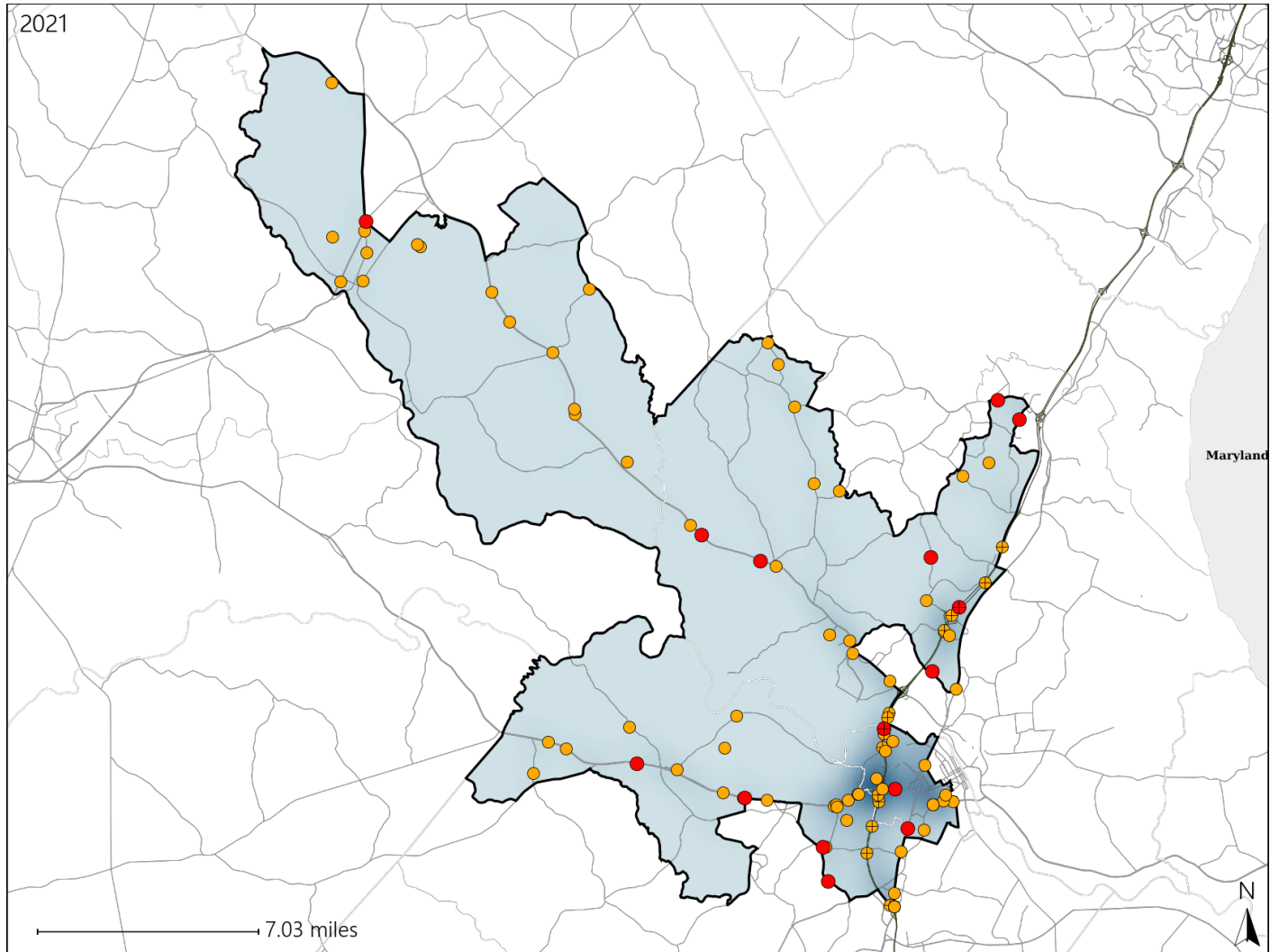


# Virginia House District 88 Crash Statistics

Report Generated April, 2022

	Count	Highest Time Period(s)	Highest Day(s)	Highest Month(s)
<b>Fatal Crashes</b>	<b>15</b>	3:00pm - 5:59pm	Wednesday	August • February
<b>Resulting Fatalities</b>	<b>16</b>	6:00am - 8:59am (40%)	(27%)	(26%)
<b>Serious Injury Crashes</b>	<b>79</b>	6:00pm - 8:59pm 9:00pm - 11:59pm (38%)	Saturday (18%)	May (15%)



## House District 88 Crashes

Interstate Crashes

- Fatal
- Serious Injury

Non-interstate Crashes

- Fatal
- Serious Injury

The blue gradient represents the density of all crashes.

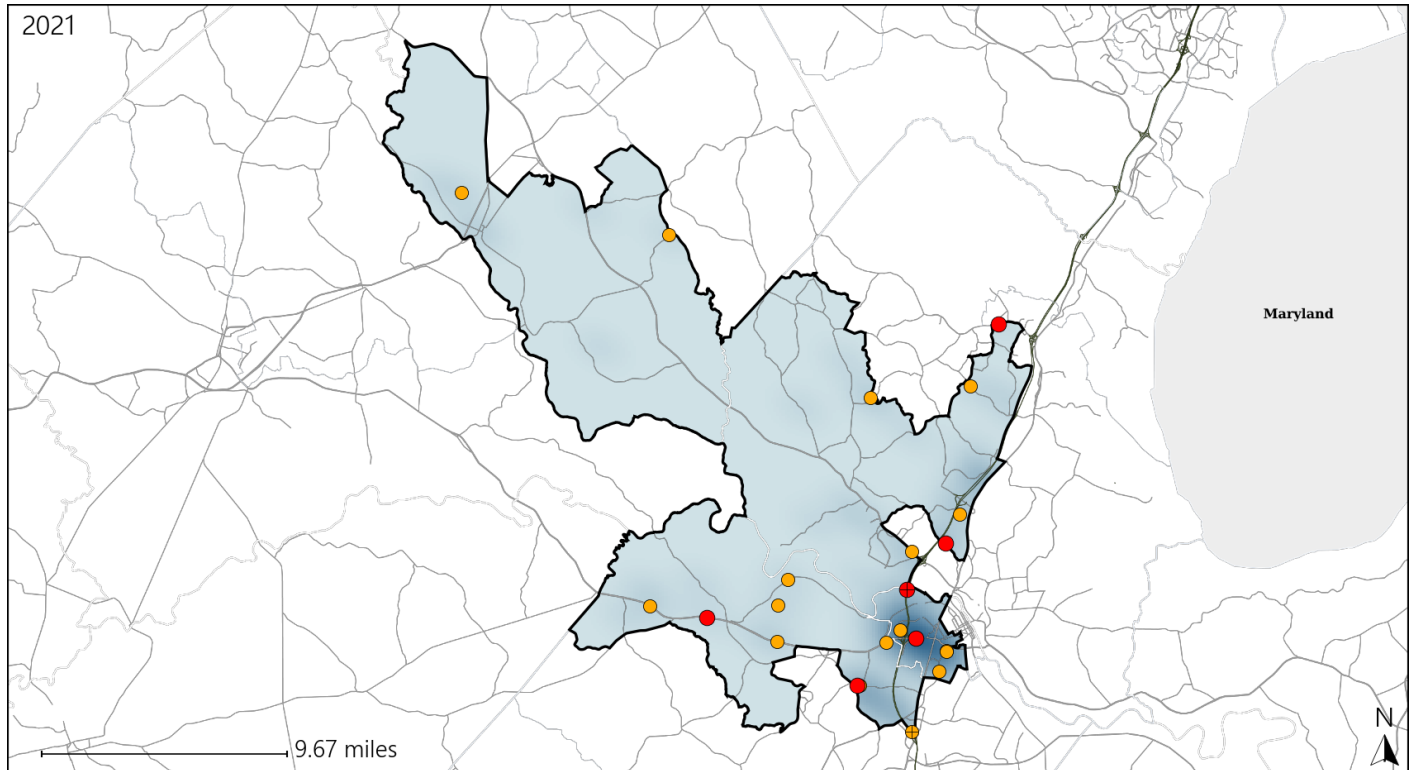


Available Crash Data - Calendar Year (CY)	CY 2018	CY 2019	CY 2020	CY 2021
Total Crashes	2216	2349	1795	2193
Fatal Crashes	11	13	10	15
Injury Crashes	778	799	600	710

# Virginia House District 88 Alcohol Crash Statistics

Report Generated April, 2022

	Count	Highest Time Period(s)	Highest Day(s)	Highest Month(s)
<b>Fatal Crashes</b>	<b>6</b>	<b>3:00am - 5:59am</b>	<b>Sunday</b>	<b>July</b>
<b>Resulting Fatalities</b>	<b>7</b>	<b>(33%)</b>	<b>(33%)</b>	<b>(33%)</b>
<b>Serious Injury Crashes</b>	<b>17</b>	<b>9:00pm - 11:59pm</b>	<b>Tuesday</b>	<b>October</b>
		<b>(41%)</b>	<b>(29%)</b>	<b>(24%)</b>



## House District 88 Alcohol-Related Crashes

Interstate Crashes

Non-interstate Crashes

- Fatal
- Serious Injury

- Fatal
- Serious Injury

The blue gradient represents the density of all alcohol-related crashes.



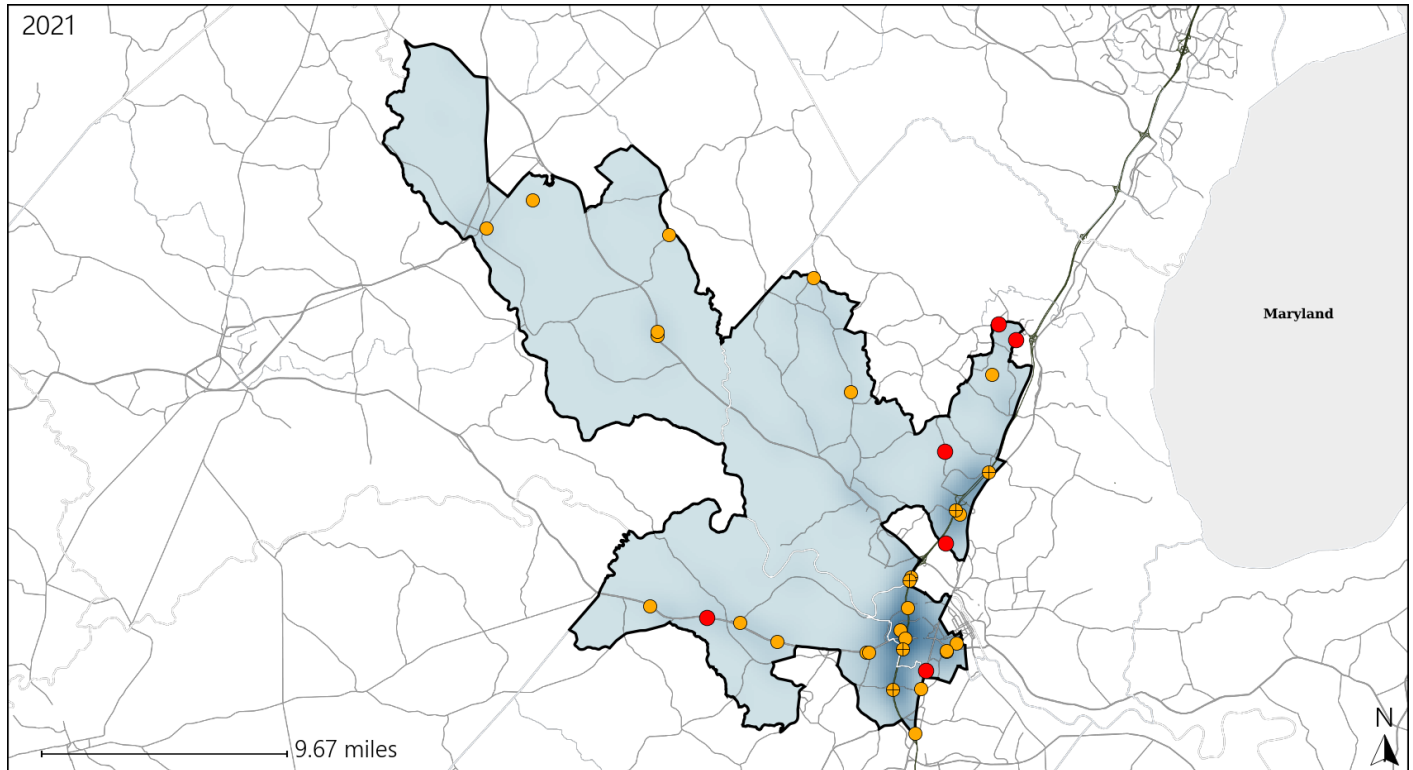
Available Crash Data - Calendar Year (CY)	CY 2018	CY 2019	CY 2020	CY 2021
Total Crashes	2216	2349	1795	2193
Fatal Crashes	11	13	10	15
Injury Crashes	778	799	600	710
Alcohol-Related Fatal Crashes	5	4	2	6
Percent of Alcohol-Related Fatal Crashes to Total Fatal Crashes	45%	31%	20%	40%
Alcohol-Related Injury Crashes	54	39	42	43
Percent of Alcohol-Related Injury Crashes to Total Injury Crashes	7%	5%	7%	6%

Report of Crashes for January 1<sup>st</sup> - December 31<sup>st</sup>, 2021

# Virginia House District 88 Speed Crash Statistics

Report Generated April, 2022

	Count	Highest Time Period(s)	Highest Day(s)	Highest Month(s)
<b>Fatal Crashes</b>	<b>6</b>	<b>3:00pm - 5:59pm</b>	<b>Sunday</b>	<b>July</b>
<b>Resulting Fatalities</b>	<b>7</b>	<b>(50%)</b>	<b>(33%)</b>	<b>(33%)</b>
<b>Serious Injury Crashes</b>	<b>28</b>	<b>3:00pm - 5:59pm</b>	<b>Saturday • Sunday</b>	<b>May</b>
		<b>(29%)</b>	<b>(42%)</b>	<b>(18%)</b>



## House District 88 Speed-Related Crashes

Interstate Crashes

Non-interstate Crashes

● Fatal

● Fatal

⊕ Serious Injury

⊕ Serious Injury

The blue gradient represents the density of all speed-related crashes.

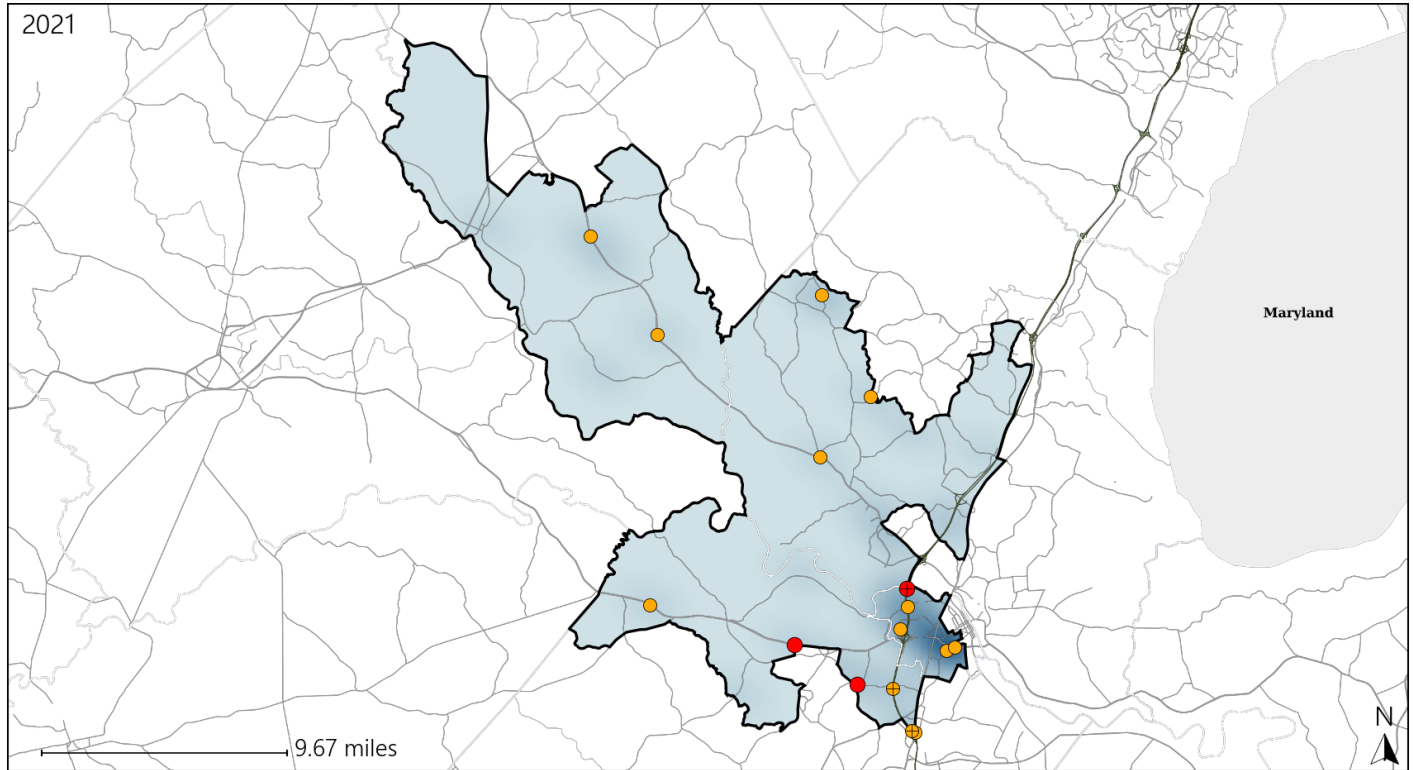


Available Crash Data - Calendar Year (CY)	CY 2018	CY 2019	CY 2020	CY 2021
Total Crashes	2216	2349	1795	2193
Fatal Crashes	11	13	10	15
Injury Crashes	778	799	600	710
Speed-Related Fatal Crashes	9	6	7	6
Percent of Speed-Related Fatal Crashes to Total Fatal Crashes	82%	46%	70%	40%
Speed-Related Injury Crashes	186	142	125	153
Percent of Speed-Related Injury Crashes to Total Injury Crashes	24%	18%	21%	22%

# Virginia House District 88 Unrestrained Crash Statistics

Report Generated April, 2022

	Count	Highest Time Period(s)	Highest Day(s)	Highest Month(s)
<b>Fatal Crashes</b>	<b>3</b>	3:00am - 5:59am	Monday • Tuesday	August • February
<b>Unrestrained Fatalities</b>	<b>3</b>	6:00pm - 8:59pm (66%)	(66%)	(66%)
<b>Serious Injury Crashes</b>	<b>13</b>	6:00pm - 8:59pm (31%)	Sunday • Thursday (62%)	April • January (46%)



## House District 88 Unrestrained-Related Crashes

Interstate Crashes

Non-interstate Crashes

- Fatal
- Serious Injury

- Fatal
- Serious Injury

The blue gradient represents the density of all unrestrained-related crashes.

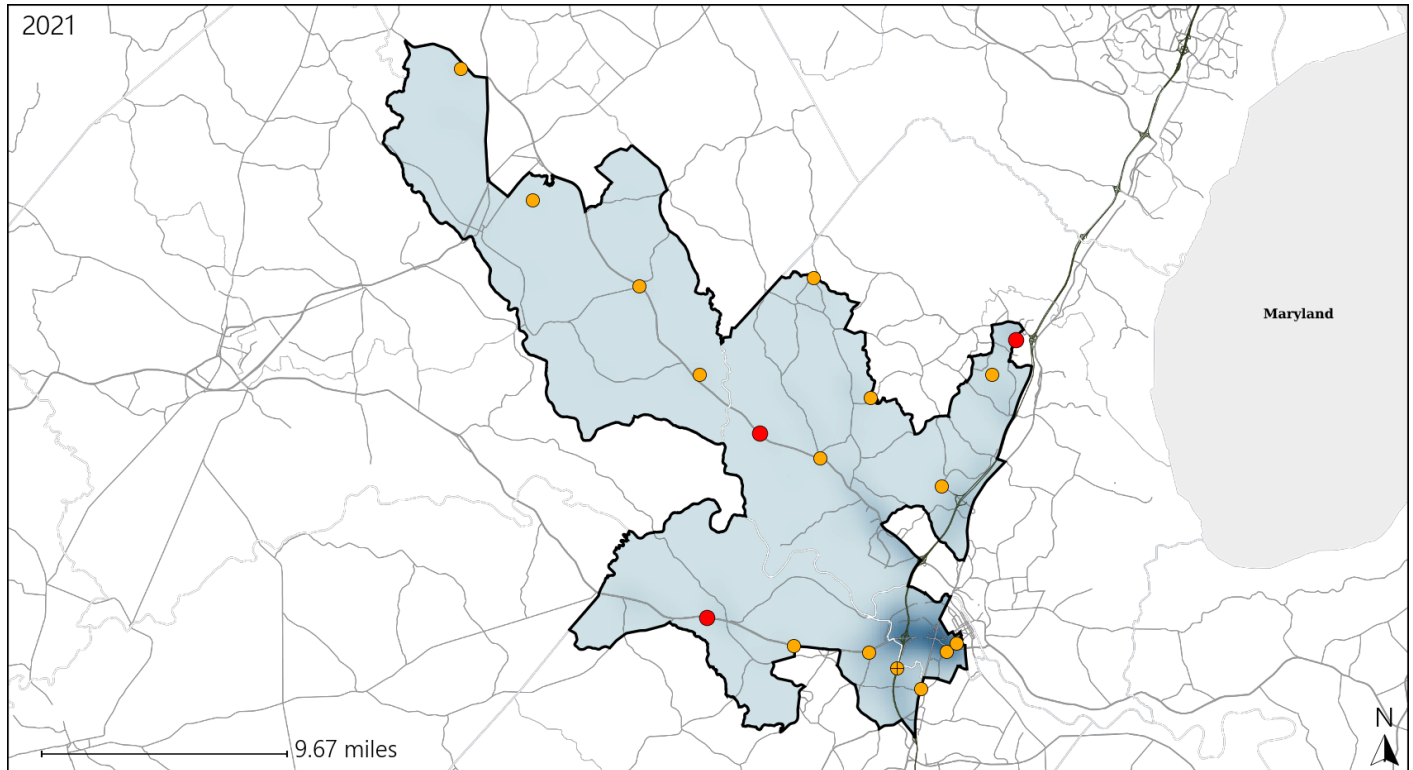


Available Crash Data - Calendar Year (CY)	CY 2018	CY 2019	CY 2020	CY 2021
Total Crashes	2216	2349	1795	2193
Fatalities	11	15	11	16
Injuries	1263	1375	1051	1117
Unrestrained Fatalities	3	4	3	3
Percent of Unrestrained Fatalities to Total Fatalities	27%	27%	27%	19%
Unrestrained Injuries	55	52	52	45
Percent of Unrestrained Injuries to Total Injuries	4%	4%	5%	4%

# Virginia House District 88 Distracted Driving Crash Statistics

Report Generated April, 2022

	Count	Highest Time Period(s)	Highest Day(s)	Highest Month(s)
<b>Fatal Crashes</b>	<b>3</b>	6:00am - 8:59am (67%)	Monday • Sunday (66%)	March • May (66%)
<b>Resulting Fatalities</b>	<b>4</b>			
<b>Serious Injury Crashes</b>	<b>15</b>	3:00pm - 5:59pm (33%)	Friday • Thursday (40%)	May (27%)



## House District 88 Distracted Driving-Related Crashes

Interstate Crashes

Non-interstate Crashes

- Fatal
- Serious Injury

- Fatal
- Serious Injury

The blue gradient represents the density of all distracted driving-related crashes.



Available Crash Data - Calendar Year (CY)	CY 2018	CY 2019	CY 2020	CY 2021
Total Crashes	2216	2349	1795	2193
Fatal Crashes	11	13	10	15
Injury Crashes	778	799	600	710
Distracted Driving-Related Fatal Crashes	5	2	1	3
Percent of Distracted Driving-Related Fatal Crashes to Total Fatal Crashes	45%	15%	10%	20%
Distracted Driving-Related Injury Crashes	204	233	146	172
Percent of Distracted Driving-Related Injury Crashes to Total Injury Crashes	26%	29%	24%	24%