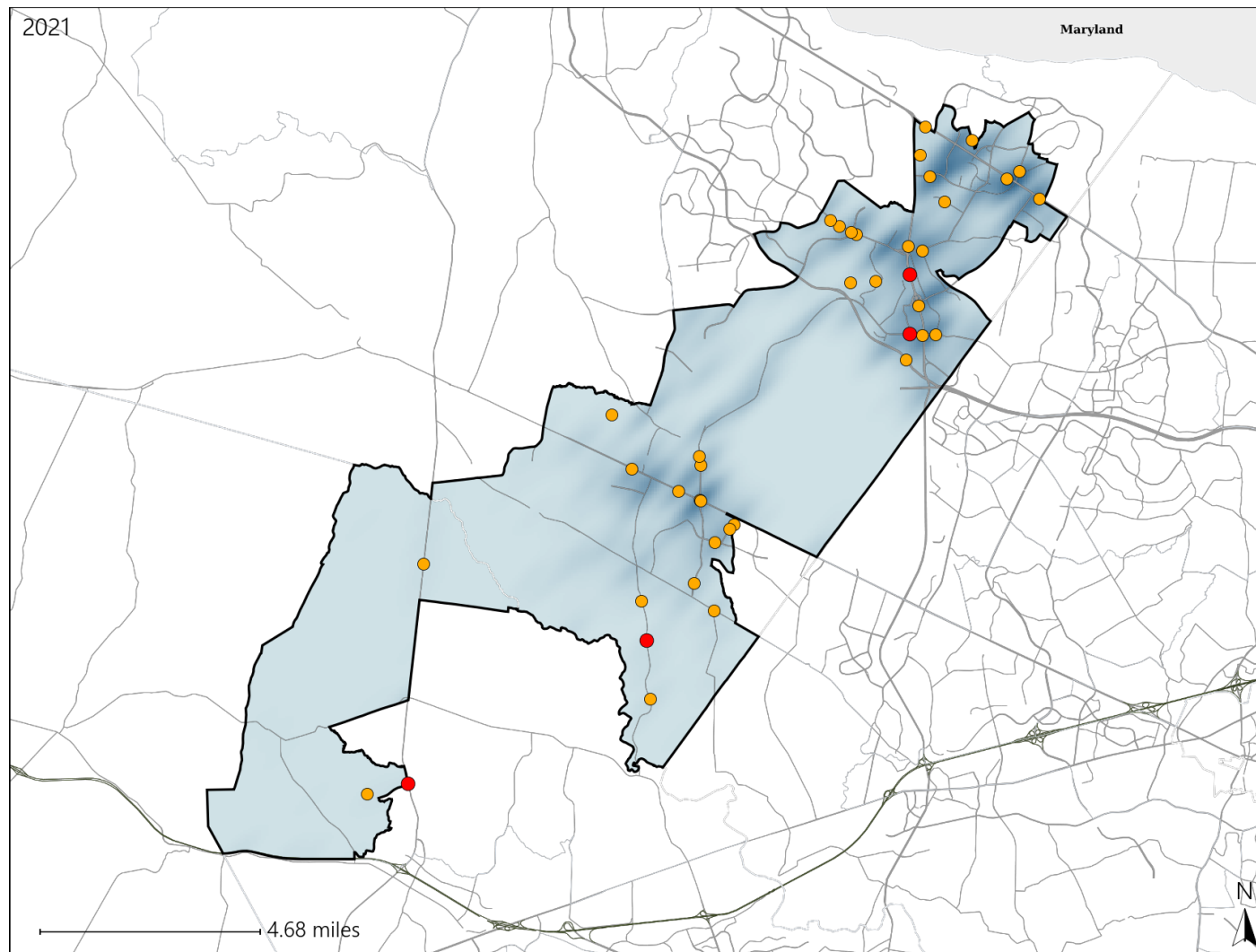


Report of Crashes for January 1<sup>st</sup> - December 31<sup>st</sup>, 2021

# Virginia House District 87 Crash Statistics

Report Generated April, 2022

	Count	Highest Time Period(s)	Highest Day(s)	Highest Month(s)
<b>Fatal Crashes</b>	<b>4</b>	<b>9:00pm - 11:59pm</b>	<b>Friday • Saturday</b>	<b>December • January</b>
<b>Resulting Fatalities</b>	<b>4</b>	<b>(50%)</b>	<b>(50%)</b>	<b>(50%)</b>
<b>Serious Injury Crashes</b>	<b>36</b>	<b>6:00pm - 8:59pm</b>	<b>Sunday</b>	<b>June</b>
		<b>(31%)</b>	<b>(22%)</b>	<b>(25%)</b>



## House District 87 Crashes

Interstate Crashes

- Fatal
- Serious Injury

Non-interstate Crashes

- Fatal
- Serious Injury

The blue gradient represents the density of all crashes.

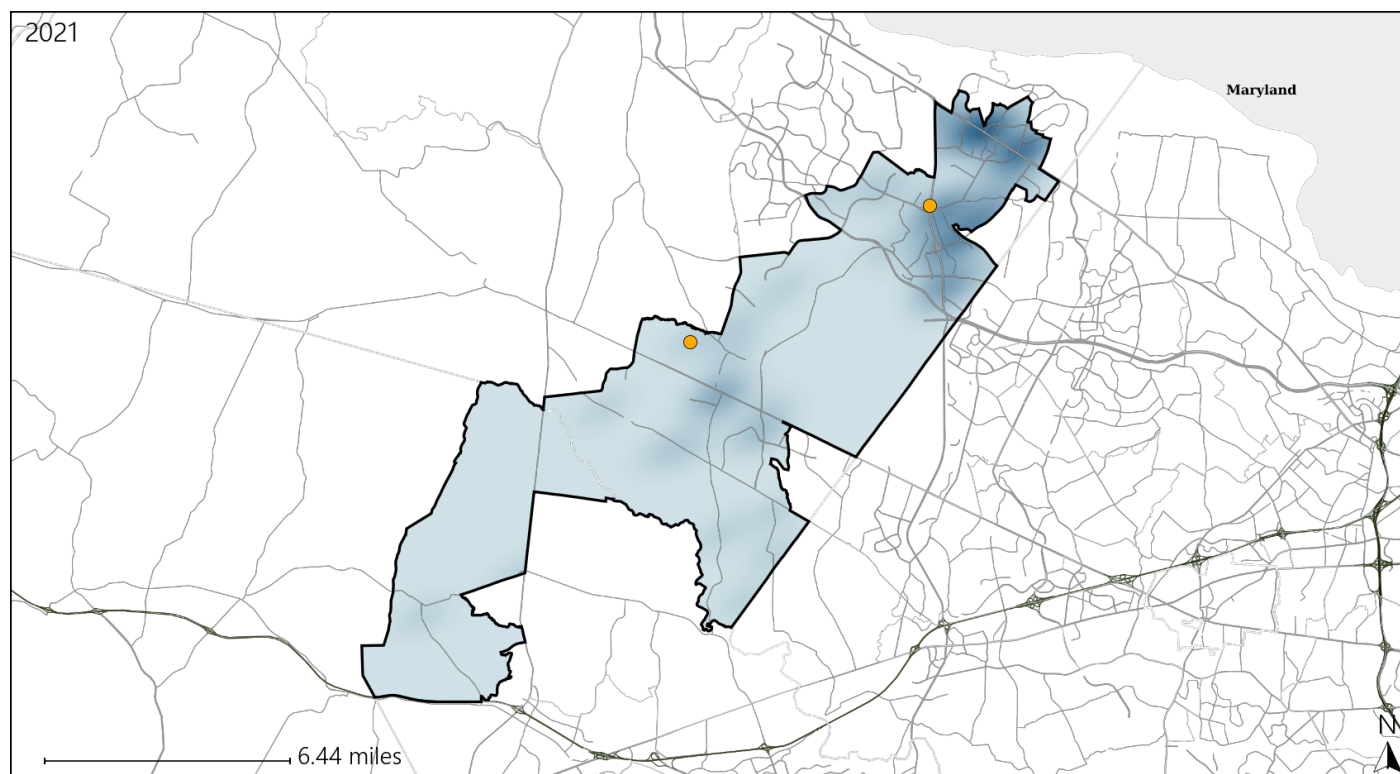


Available Crash Data - Calendar Year (CY)	CY 2018	CY 2019	CY 2020	CY 2021
Total Crashes	1988	1946	1257	1548
Fatal Crashes	4	5	3	4
Injury Crashes	545	489	298	398

# Virginia House District 87 Alcohol Crash Statistics

Report Generated April, 2022

	Count	Highest Time Period(s)	Highest Day(s)	Highest Month(s)
<b>Fatal Crashes</b>	<b>0</b>	-	-	-
<b>Resulting Fatalities</b>	<b>0</b>	-	-	-
<b>Serious Injury Crashes</b>	<b>2</b>	6:00pm - 8:59pm Midnight - 2:59am (100%)	Saturday • Sunday (100%)	June • May (100%)



## House District 87 Alcohol-Related Crashes

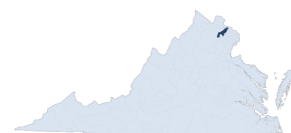
Interstate Crashes

- Fatal
- Serious Injury

Non-interstate Crashes

- Fatal
- Serious Injury

The blue gradient represents the density of all alcohol-related crashes.



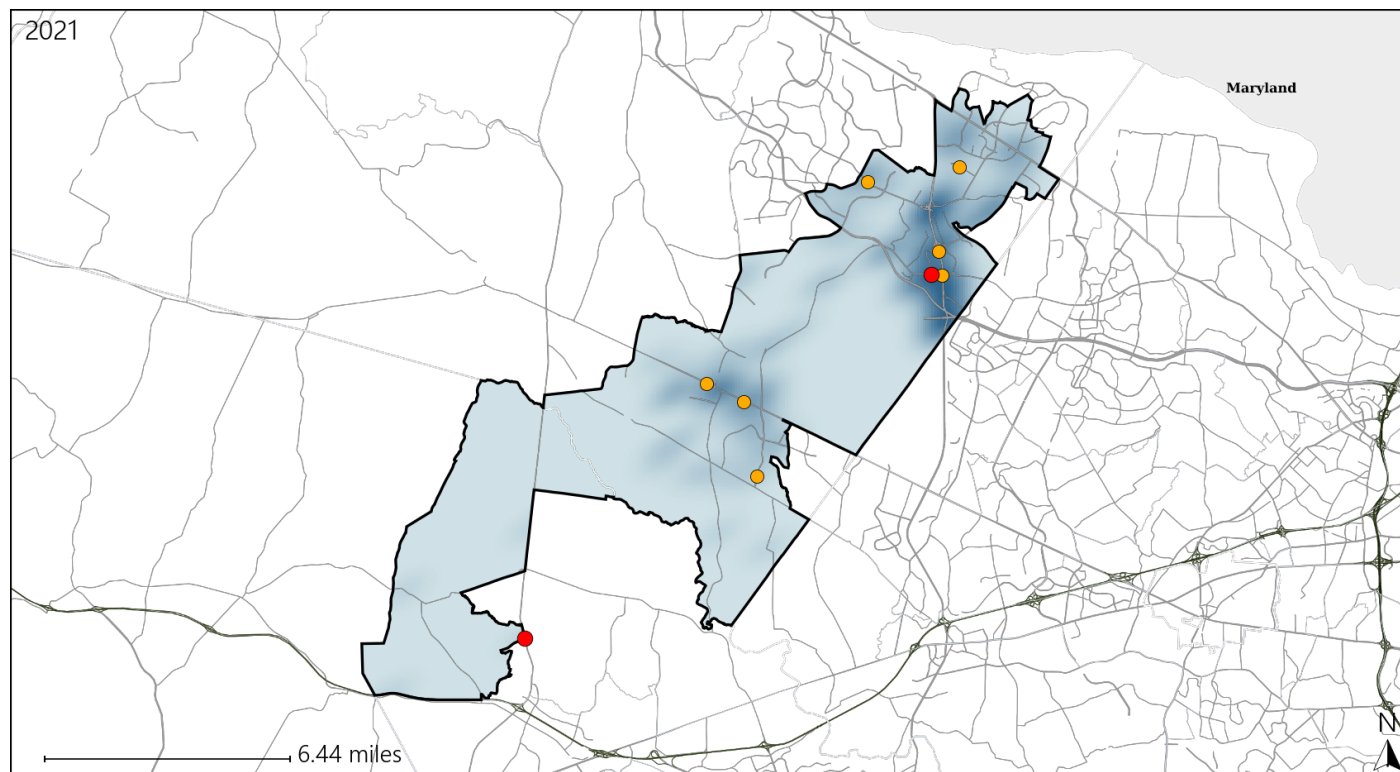
Available Crash Data - Calendar Year (CY)	CY 2018	CY 2019	CY 2020	CY 2021
Total Crashes	1988	1946	1257	1548
Fatal Crashes	4	5	3	4
Injury Crashes	545	489	298	398
Alcohol-Related Fatal Crashes	2	1	2	0
Percent of Alcohol-Related Fatal Crashes to Total Fatal Crashes	50%	20%	67%	0%
Alcohol-Related Injury Crashes	25	33	23	22
Percent of Alcohol-Related Injury Crashes to Total Injury Crashes	5%	7%	8%	6%

Report of Crashes for January 1<sup>st</sup> - December 31<sup>st</sup>, 2021

# Virginia House District 87 Speed Crash Statistics

Report Generated April, 2022

	Count	Highest Time Period(s)	Highest Day(s)	Highest Month(s)
<b>Fatal Crashes</b>	<b>2</b>	<b>9:00pm - 11:59pm</b>	<b>Friday • Sunday</b>	<b>January • June</b>
<b>Resulting Fatalities</b>	<b>2</b>	<b>Noon - 2:59pm</b> (100%)	<b>(100%)</b>	<b>(100%)</b>
<b>Serious Injury Crashes</b>	<b>7</b>	<b>6:00pm - 8:59pm</b> (43%)	<b>Sunday</b> (57%)	<b>December • June</b> (58%)



## House District 87 Speed-Related Crashes

Interstate Crashes

- Fatal
- Serious Injury

Non-interstate Crashes

- Fatal
- Serious Injury

The blue gradient represents the density of all speed-related crashes.

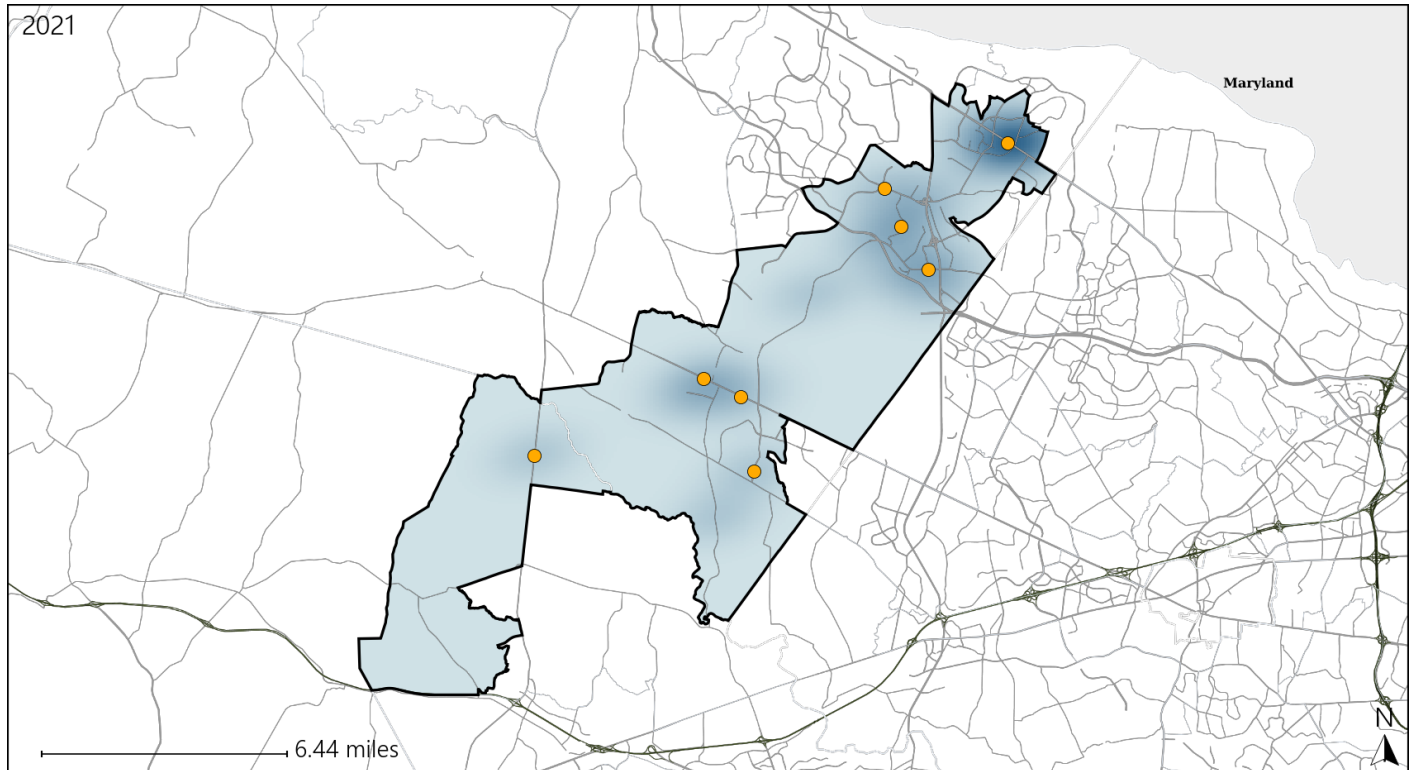


Available Crash Data - Calendar Year (CY)	CY 2018	CY 2019	CY 2020	CY 2021
Total Crashes	1988	1946	1257	1548
Fatal Crashes	4	5	3	4
Injury Crashes	545	489	298	398
Speed-Related Fatal Crashes	1	1	0	2
Percent of Speed-Related Fatal Crashes to Total Fatal Crashes	25%	20%	0%	50%
Speed-Related Injury Crashes	57	77	36	39
Percent of Speed-Related Injury Crashes to Total Injury Crashes	10%	16%	12%	10%

# Virginia House District 87 Unrestrained Crash Statistics

Report Generated April, 2022

	Count	Highest Time Period(s)	Highest Day(s)	Highest Month(s)
<b>Fatal Crashes</b>	<b>0</b>	-	-	-
<b>Unrestrained Fatalities</b>	<b>0</b>			
<b>Serious Injury Crashes</b>	<b>8</b>	<b>6:00pm - 8:59pm</b> (38%)	<b>Sunday</b> (38%)	<b>June • May</b> (50%)



## House District 87 Unrestrained-Related Crashes

Interstate Crashes

- Fatal
- Serious Injury

Non-interstate Crashes

- Fatal
- Serious Injury

The blue gradient represents the density of all unrestrained-related crashes.



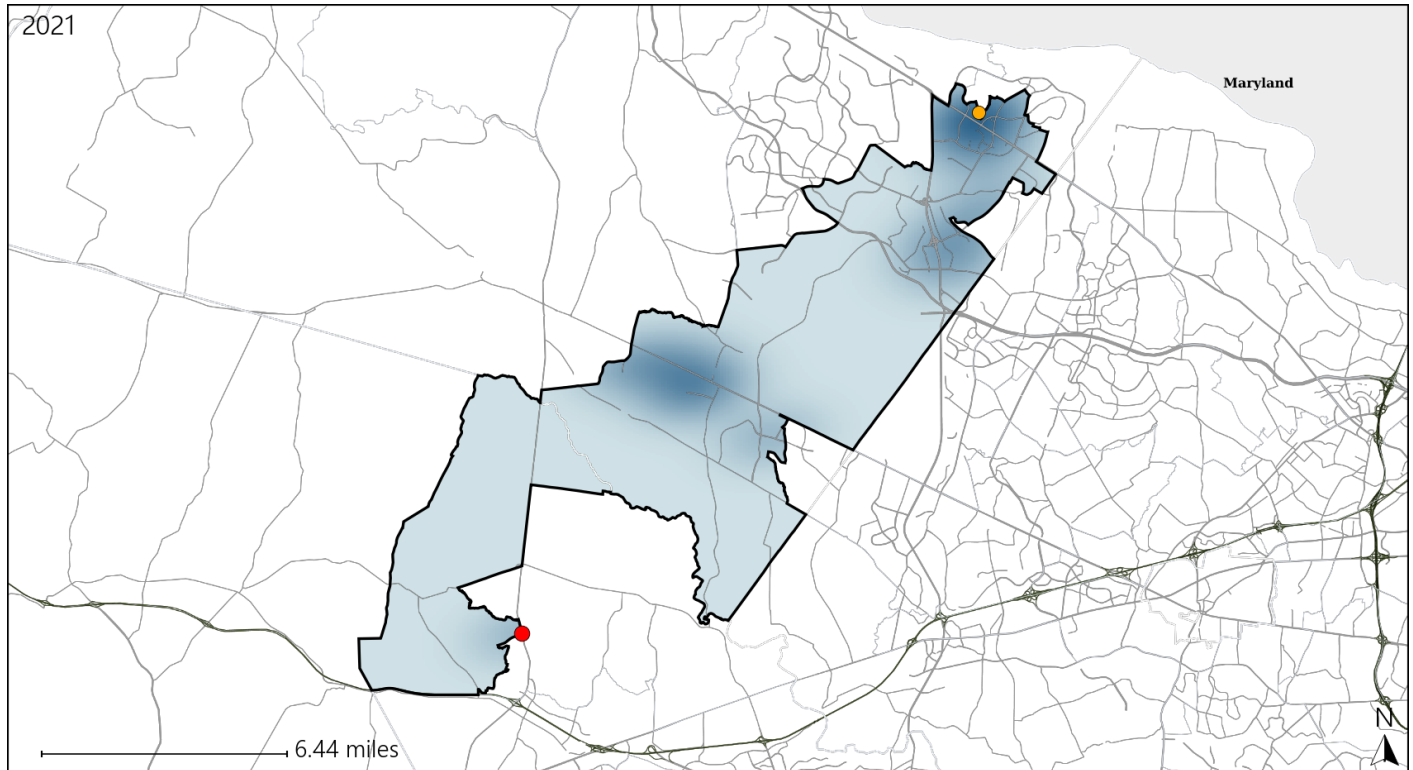
Available Crash Data - Calendar Year (CY)	CY 2018	CY 2019	CY 2020	CY 2021
Total Crashes	1988	1946	1257	1548
Fatalities	4	6	3	4
Injuries	920	842	490	617
Unrestrained Fatalities	1	1	2	0
Percent of Unrestrained Fatalities to Total Fatalities	25%	17%	67%	0%
Unrestrained Injuries	18	28	20	21
Percent of Unrestrained Injuries to Total Injuries	2%	3%	4%	3%

Report of Crashes for January 1<sup>st</sup> - December 31<sup>st</sup>, 2021

# Virginia House District 87 Pedestrian Crash Statistics

Report Generated April, 2022

	Count	Highest Time Period(s)	Highest Day(s)	Highest Month(s)
<b>Fatal Crashes</b>	<b>1</b>	<b>9:00pm - 11:59pm</b>	<b>Sunday</b>	<b>January</b>
<b>Pedestrian Fatalities</b>	<b>1</b>	<b>(100%)</b>	<b>(100%)</b>	<b>(100%)</b>
<b>Serious Injury Crashes</b>	<b>1</b>	<b>6:00pm - 8:59pm</b>	<b>Tuesday</b>	<b>January</b>
		<b>(100%)</b>	<b>(100%)</b>	<b>(100%)</b>



## House District 87 Pedestrian-Related Crashes

Interstate Crashes

Non-interstate Crashes

- Fatal
- Serious Injury

- Fatal
- Serious Injury

The blue gradient represents the density of all pedestrian-related crashes.



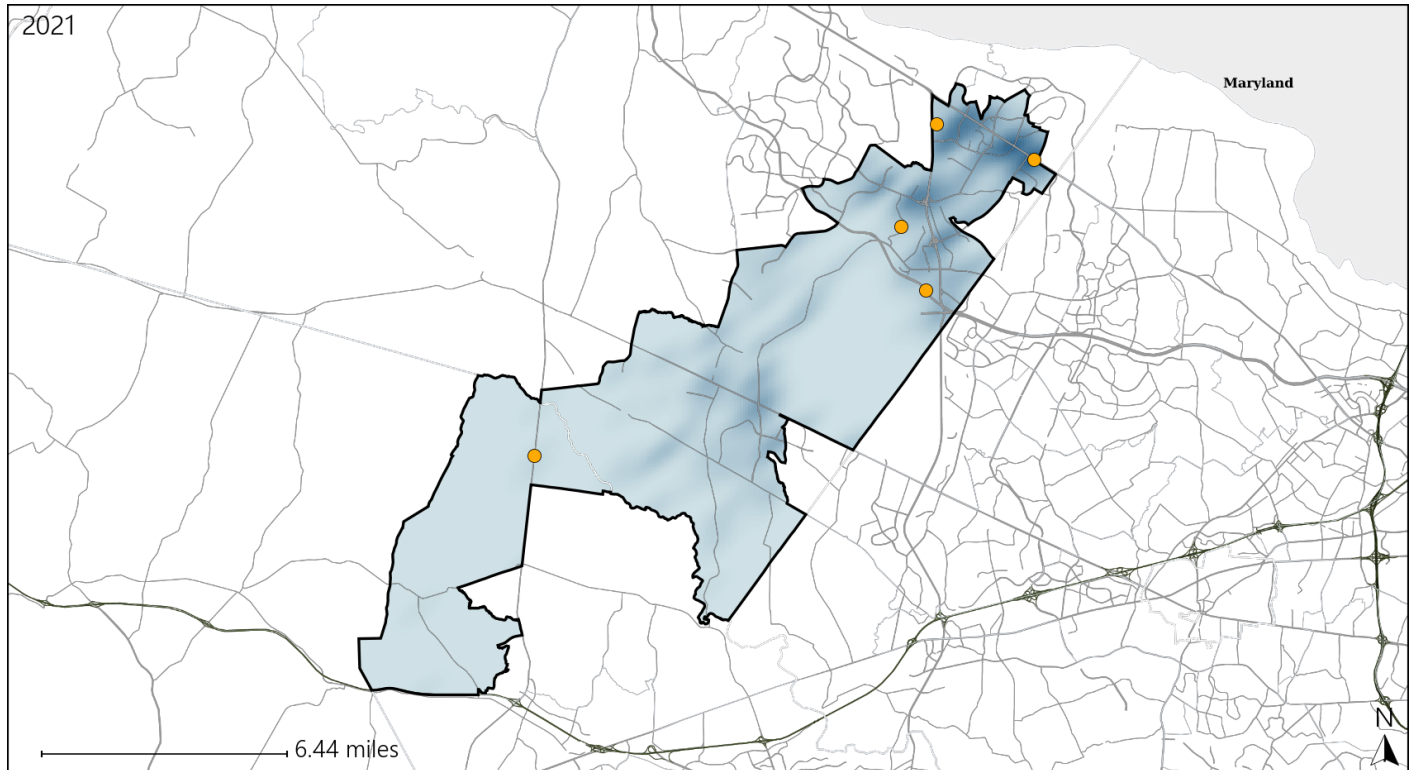
Available Crash Data - Calendar Year (CY)	CY 2018	CY 2019	CY 2020	CY 2021
Total Crashes	1988	1946	1257	1548
Fatal Crashes	4	5	3	4
Injury Crashes	545	489	298	398
Pedestrian-Related Fatal Crashes	0	1	0	1
Percent of Pedestrian-Related Fatal Crashes to Total Fatal Crashes	0%	20%	0%	25%
Pedestrian-Related Injury Crashes	20	15	14	12
Percent of Pedestrian-Related Injury Crashes to Total Injury Crashes	4%	3%	5%	3%



# Virginia House District 87 Distracted Driving Crash Statistics

Report Generated April, 2022

	Count	Highest Time Period(s)	Highest Day(s)	Highest Month(s)
<b>Fatal Crashes</b>	<b>0</b>	-	-	-
<b>Resulting Fatalities</b>	<b>0</b>			
<b>Serious Injury Crashes</b>	<b>5</b>	<b>3:00pm - 5:59pm</b> (40%)	<b>Friday</b> (40%)	<b>August • December</b> (40%)



## House District 87 Distracted Driving-Related Crashes

Interstate Crashes

Non-interstate Crashes

- Fatal
- Serious Injury

- Fatal
- Serious Injury

The blue gradient represents the density of all distracted driving-related crashes.



Available Crash Data - Calendar Year (CY)	CY 2018	CY 2019	CY 2020	CY 2021
Total Crashes	1988	1946	1257	1548
Fatal Crashes	4	5	3	4
Injury Crashes	545	489	298	398
Distracted Driving-Related Fatal Crashes	1	0	0	0
Percent of Distracted Driving-Related Fatal Crashes to Total Fatal Crashes	25%	0%	0%	0%
Distracted Driving-Related Injury Crashes	111	102	62	85
Percent of Distracted Driving-Related Injury Crashes to Total Injury Crashes	20%	21%	21%	21%