

# Virginia House District 82 Crash Statistics

Report Generated April, 2022

	Count	Highest Time Period(s)	Highest Day(s)	Highest Month(s)
<b>Fatal Crashes</b>	<b>7</b>	3:00pm - 5:59pm	Monday	October
<b>Resulting Fatalities</b>	<b>7</b>	9:00pm - 11:59pm (58%)	(43%)	(29%)
<b>Serious Injury Crashes</b>	<b>36</b>	3:00pm - 5:59pm	Thursday	July • September
		9:00pm - 11:59pm (38%)	(25%)	(38%)



## House District 82 Crashes

Interstate Crashes

- Fatal
- Serious Injury

Non-interstate Crashes

- Fatal
- Serious Injury

The blue gradient represents the density of all crashes.

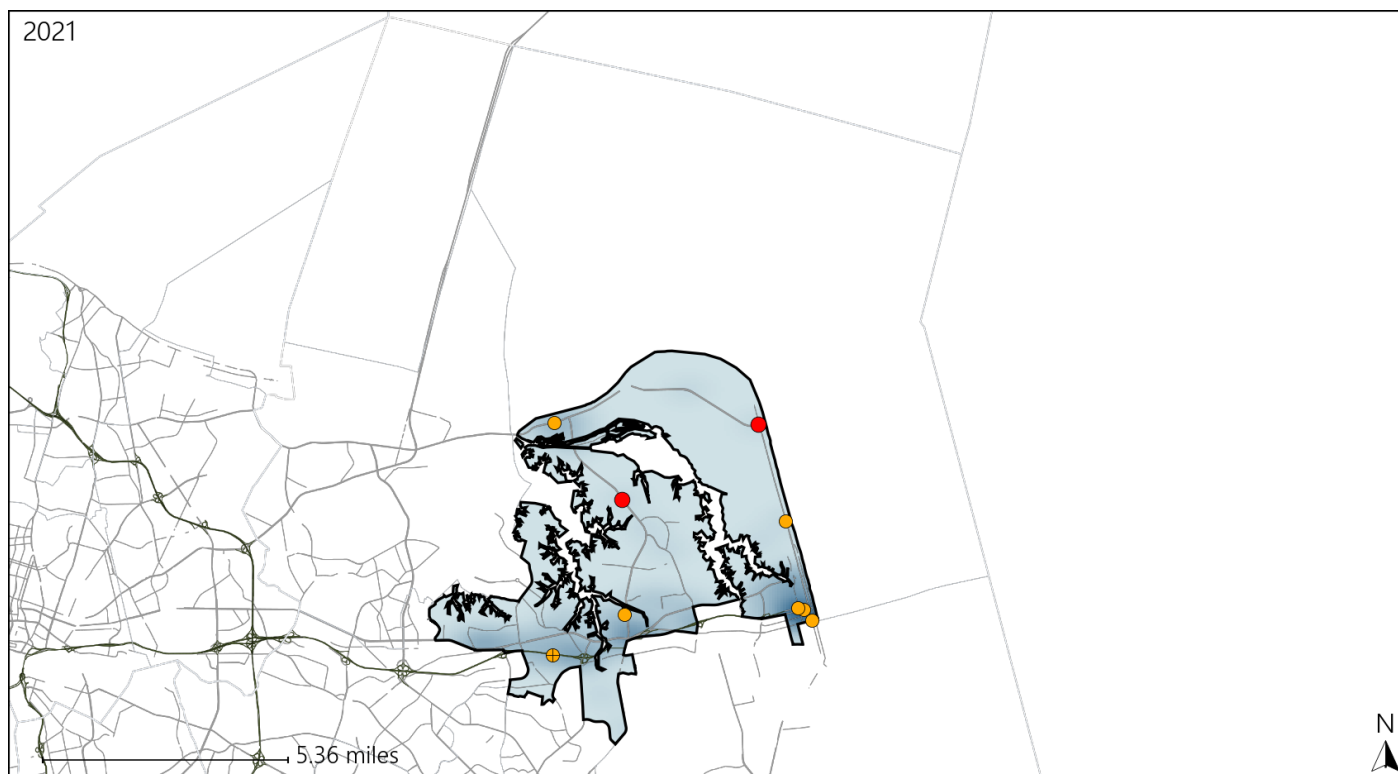


Available Crash Data - Calendar Year (CY)	CY 2018	CY 2019	CY 2020	CY 2021
Total Crashes	1396	1260	1115	1182
Fatal Crashes	3	3	4	7
Injury Crashes	417	385	352	330

# Virginia House District 82 Alcohol Crash Statistics

Report Generated April, 2022

	Count	Highest Time Period(s)	Highest Day(s)	Highest Month(s)
<b>Fatal Crashes</b>	<b>2</b>	6:00pm - 8:59pm	Monday	March + October
<b>Resulting Fatalities</b>	<b>2</b>	Midnight - 2:59am (100%)	(100%)	(100%)
<b>Serious Injury Crashes</b>	<b>7</b>	6:00pm - 8:59pm 9:00pm - 11:59pm (58%)	Sunday (57%)	July (43%)



## House District 82 Alcohol-Related Crashes

Interstate Crashes

Non-interstate Crashes

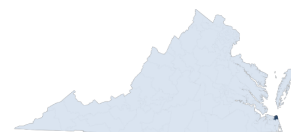
● Fatal

● Fatal

⊕ Serious Injury

⊕ Serious Injury

The blue gradient represents the density of all alcohol-related crashes.



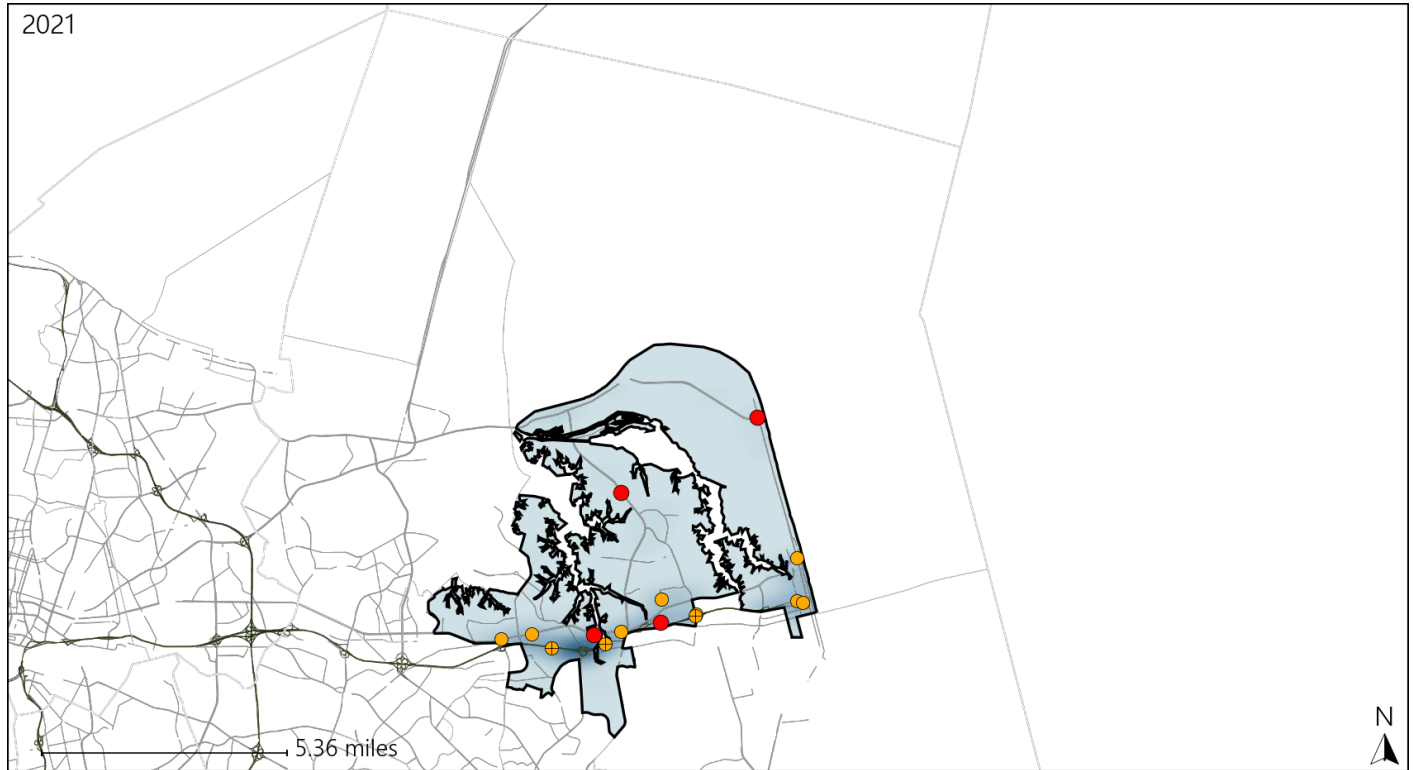
Available Crash Data - Calendar Year (CY)	CY 2018	CY 2019	CY 2020	CY 2021
Total Crashes	1396	1260	1115	1182
Fatal Crashes	3	3	4	7
Injury Crashes	417	385	352	330
Alcohol-Related Fatal Crashes	2	0	4	2
Percent of Alcohol-Related Fatal Crashes to Total Fatal Crashes	67%	0%	100%	29%
Alcohol-Related Injury Crashes	31	32	44	39
Percent of Alcohol-Related Injury Crashes to Total Injury Crashes	7%	8%	13%	12%

Report of Crashes for January 1<sup>st</sup> - December 31<sup>st</sup>, 2021

# Virginia House District 82 Speed Crash Statistics

Report Generated April, 2022

	Count	Highest Time Period(s)	Highest Day(s)	Highest Month(s)
<b>Fatal Crashes</b>	<b>4</b>	3:00pm - 5:59pm	Monday	October
<b>Resulting Fatalities</b>	<b>4</b>	6:00pm - 8:59pm (50%)	(50%)	(50%)
<b>Serious Injury Crashes</b>	<b>11</b>	6:00pm - 8:59pm (36%)	Sunday • Thursday (54%)	September (27%)



## House District 82 Speed-Related Crashes

Interstate Crashes

Non-interstate Crashes

● Fatal

● Fatal

● Serious Injury

● Serious Injury

The blue gradient represents the density of all speed-related crashes.

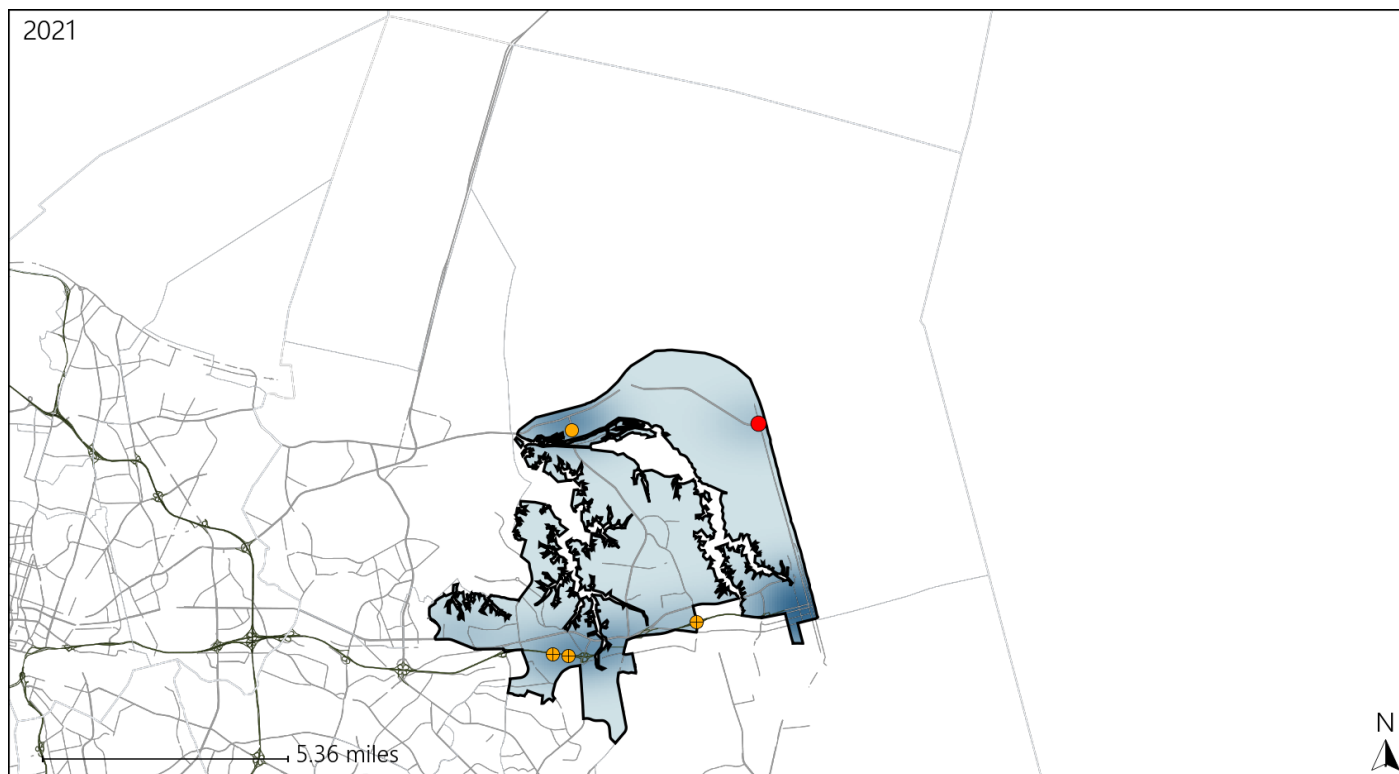


Available Crash Data - Calendar Year (CY)	CY 2018	CY 2019	CY 2020	CY 2021
Total Crashes	1396	1260	1115	1182
Fatal Crashes	3	3	4	7
Injury Crashes	417	385	352	330
Speed-Related Fatal Crashes	2	1	1	4
Percent of Speed-Related Fatal Crashes to Total Fatal Crashes	67%	33%	25%	57%
Speed-Related Injury Crashes	65	57	71	67
Percent of Speed-Related Injury Crashes to Total Injury Crashes	16%	15%	20%	20%

# Virginia House District 82 Unrestrained Crash Statistics

Report Generated April, 2022

	Count	Highest Time Period(s)	Highest Day(s)	Highest Month(s)
<b>Fatal Crashes</b>	<b>1</b>	<b>Midnight - 2:59am</b>	<b>Monday</b>	<b>March</b>
<b>Unrestrained Fatalities</b>	<b>1</b>	<b>(100%)</b>	<b>(100%)</b>	<b>(100%)</b>
<b>Serious Injury Crashes</b>	<b>4</b>	<b>6:00pm - 8:59pm</b> <b>9:00pm - 11:59pm</b>	<b>Sunday</b>	<b>January</b>
		<b>(50%)</b>	<b>(50%)</b>	<b>(50%)</b>



## House District 82 Unrestrained-Related Crashes

Interstate Crashes

Non-interstate Crashes

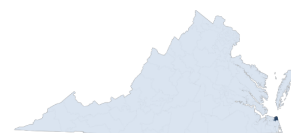
● Fatal

● Fatal

⊕ Serious Injury

⊕ Serious Injury

The blue gradient represents the density of all unrestrained-related crashes.



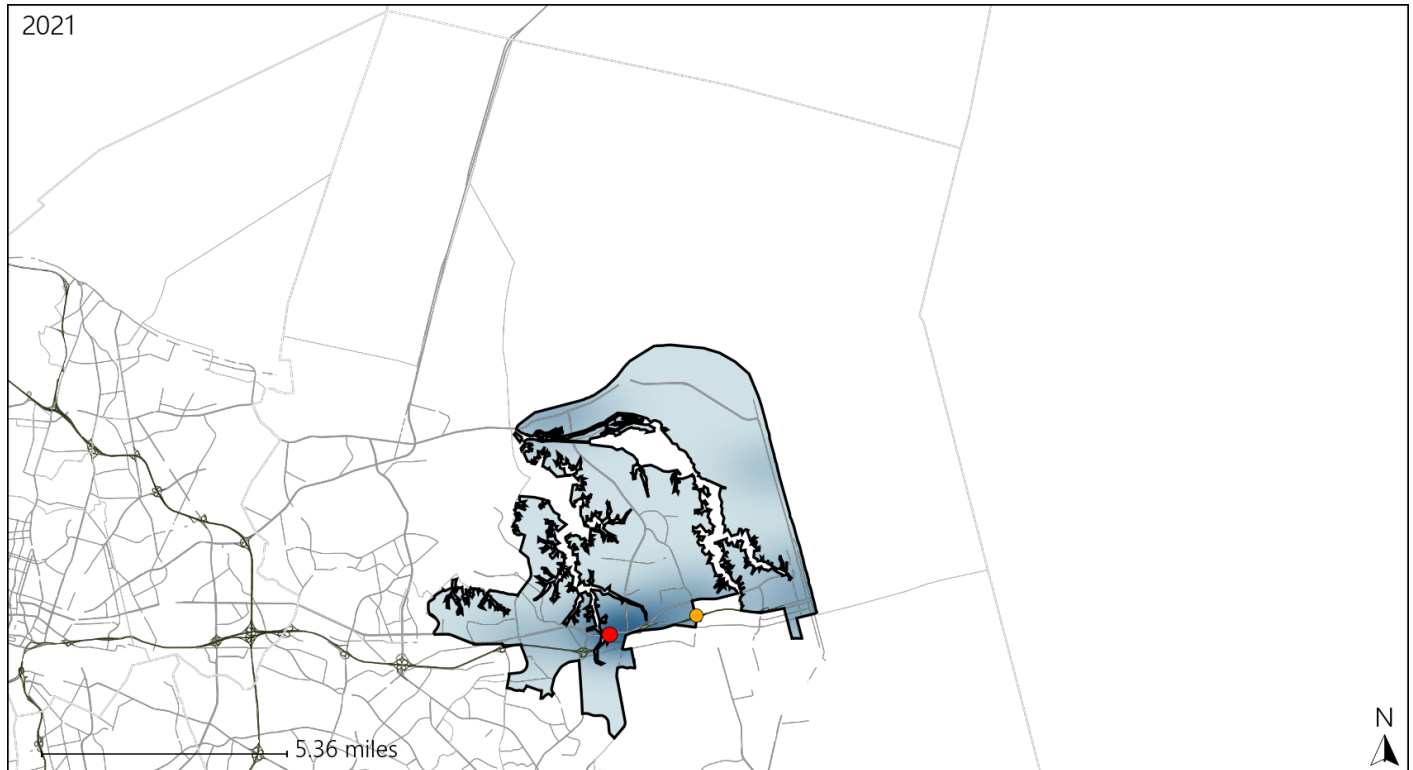
Available Crash Data - Calendar Year (CY)	CY 2018	CY 2019	CY 2020	CY 2021
Total Crashes	1396	1260	1115	1182
Fatalities	4	3	4	7
Injuries	667	605	585	524
Unrestrained Fatalities	0	1	0	1
Percent of Unrestrained Fatalities to Total Fatalities	0%	33%	0%	14%
Unrestrained Injuries	24	17	29	16
Percent of Unrestrained Injuries to Total Injuries	4%	3%	5%	3%

Report of Crashes for January 1<sup>st</sup> - December 31<sup>st</sup>, 2021

# Virginia House District 82 Bicycle Crash Statistics

Report Generated April, 2022

	Count	Highest Time Period(s)	Highest Day(s)	Highest Month(s)
<b>Fatal Crashes</b>	<b>1</b>	<b>9:00pm - 11:59pm</b>	<b>Tuesday</b>	<b>May</b>
<b>Bicycle Fatalities</b>	<b>1</b>	<b>(100%)</b>	<b>(100%)</b>	<b>(100%)</b>
<b>Serious Injury Crashes</b>	<b>1</b>	<b>6:00am - 8:59am</b>	<b>Thursday</b>	<b>December</b>
		<b>(100%)</b>	<b>(100%)</b>	<b>(100%)</b>



## House District 82 Bicycle-Related Crashes

Interstate Crashes

Non-interstate Crashes

- Fatal
- Serious Injury

- Fatal
- Serious Injury

The blue gradient represents the density of all bicycle-related crashes.

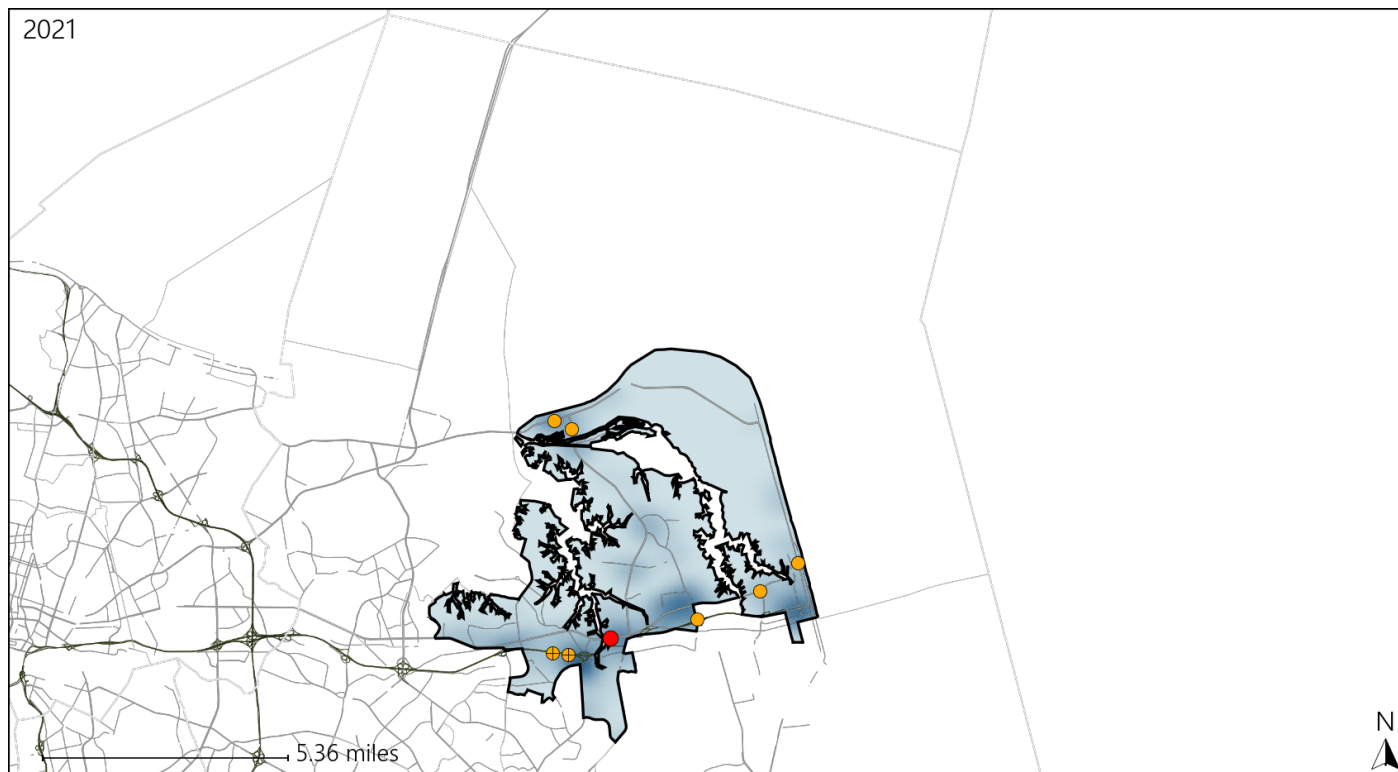


Available Crash Data - Calendar Year (CY)	CY 2018	CY 2019	CY 2020	CY 2021
Total Crashes	1396	1260	1115	1182
Fatal Crashes	3	3	4	7
Injury Crashes	417	385	352	330
Bicycle-Related Fatal Crashes	0	0	0	1
Percent of Bicycle-Related Fatal Crashes to Total Fatal Crashes	0%	0%	0%	14%
Bicycle-Related Injury Crashes	19	22	18	11
Percent of Bicycle-Related Injury Crashes to Total Injury Crashes	5%	6%	5%	3%

# Virginia House District 82 Distracted Driving Crash Statistics

Report Generated April, 2022

	Count	Highest Time Period(s)	Highest Day(s)	Highest Month(s)
<b>Fatal Crashes</b>	<b>1</b>	<b>9:00pm - 11:59pm</b>	<b>Tuesday</b>	<b>May</b>
<b>Resulting Fatalities</b>	<b>1</b>	<b>(100%)</b>	<b>(100%)</b>	<b>(100%)</b>
<b>Serious Injury Crashes</b>	<b>7</b>	<b>Noon - 2:59pm</b>	<b>Saturday • Sunday</b>	<b>December • January</b>
		<b>(29%)</b>	<b>(58%)</b>	<b>(58%)</b>




## House District 82 Distracted Driving-Related Crashes


Interstate Crashes

Non-interstate Crashes

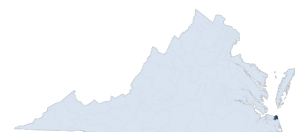
 Fatal

 Fatal

 Serious Injury

 Serious Injury

The blue gradient represents the density of all distracted driving-related crashes.



Available Crash Data - Calendar Year (CY)	CY 2018	CY 2019	CY 2020	CY 2021
Total Crashes	1396	1260	1115	1182
Fatal Crashes	3	3	4	7
Injury Crashes	417	385	352	330
Distracted Driving-Related Fatal Crashes	0	1	0	1
Percent of Distracted Driving-Related Fatal Crashes to Total Fatal Crashes	0%	33%	0%	14%
Distracted Driving-Related Injury Crashes	86	48	67	49
Percent of Distracted Driving-Related Injury Crashes to Total Injury Crashes	21%	12%	19%	15%