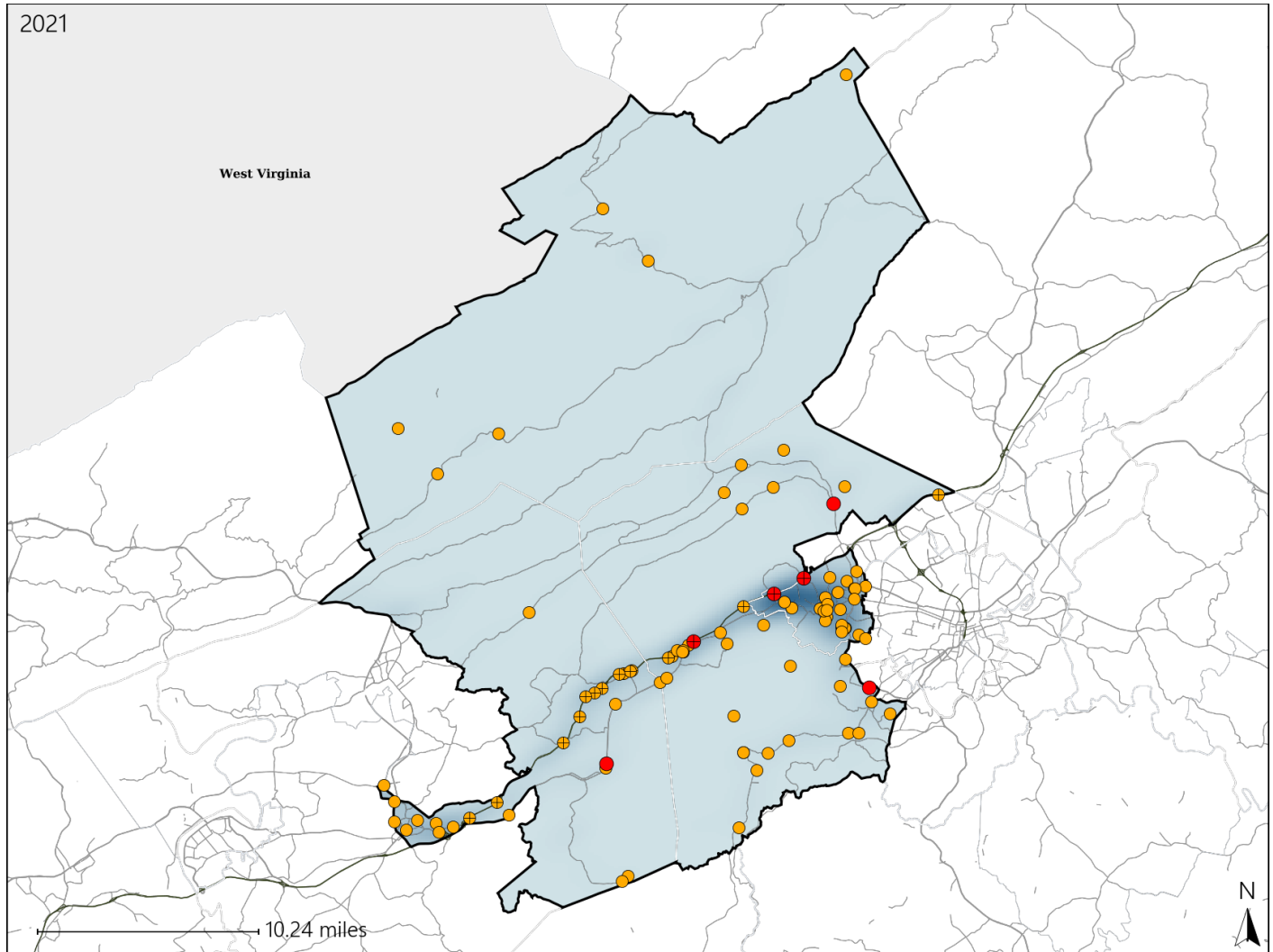


Virginia House District 8 Crash Statistics

Report Generated April, 2022

	Count	Highest Time Period(s)	Highest Day(s)	Highest Month(s)
Fatal Crashes	6	3:00pm - 5:59pm	Sunday • Wednesday	January
Resulting Fatalities	7	(50%)	(66%)	(33%)
Serious Injury Crashes	92	3:00pm - 5:59pm	Friday	August • March
		(25%)	(20%)	(24%)



House District 8 Crashes

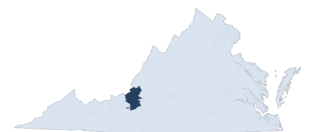
Interstate Crashes

- Fatal
- Serious Injury

Non-interstate Crashes

- Fatal
- Serious Injury

The blue gradient represents the density of all crashes.

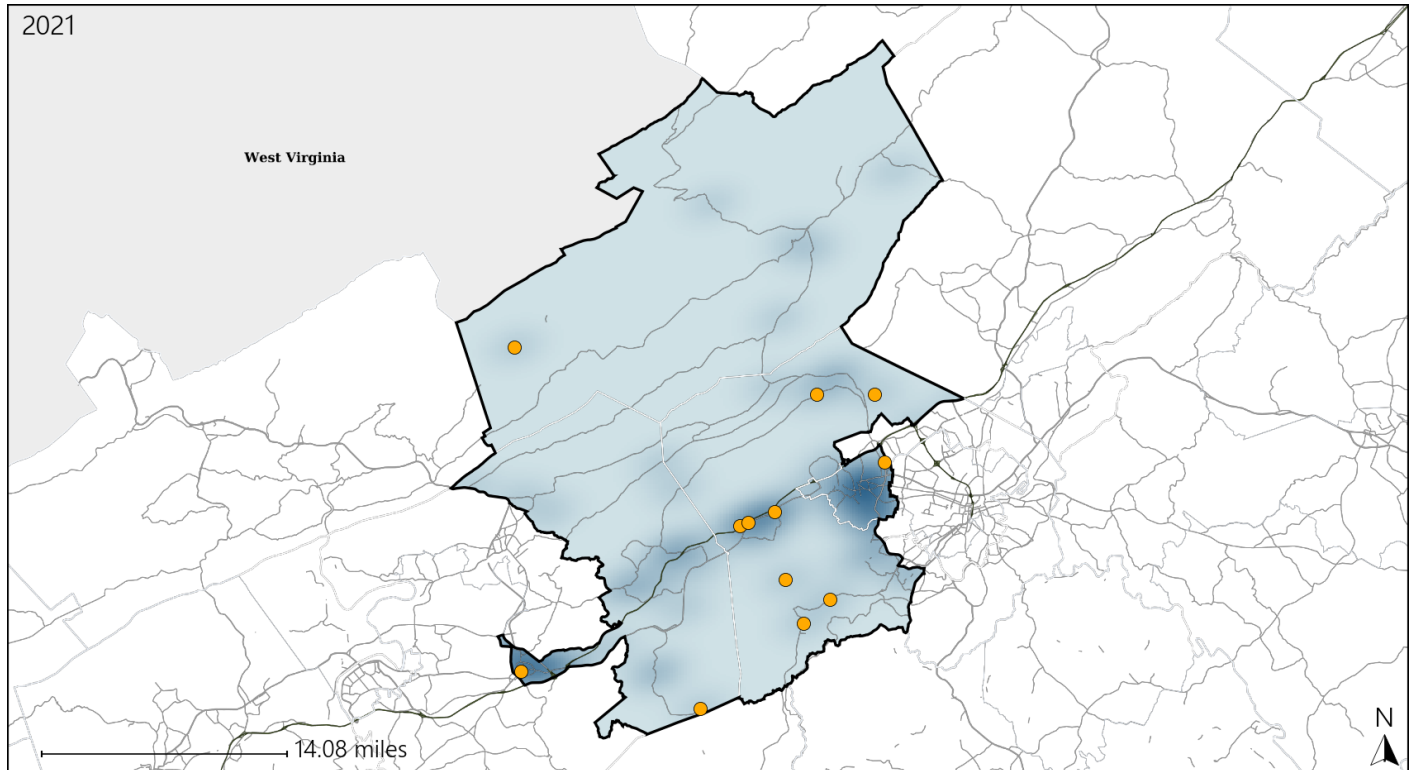


Available Crash Data - Calendar Year (CY)	CY 2018	CY 2019	CY 2020	CY 2021
Total Crashes	1670	1376	1323	1490
Fatal Crashes	7	12	7	6
Injury Crashes	537	375	431	461

Virginia House District 8 Alcohol Crash Statistics

Report Generated April, 2022

	Count	Highest Time Period(s)	Highest Day(s)	Highest Month(s)
Fatal Crashes	0	-	-	-
Resulting Fatalities	0			
Serious Injury Crashes	12	6:00pm - 8:59pm (25%)	Sunday (33%)	August (33%)



House District 8 Alcohol-Related Crashes

Interstate Crashes

Non-interstate Crashes

- Fatal
- Serious Injury

- Fatal
- Serious Injury

The blue gradient represents the density of all alcohol-related crashes.

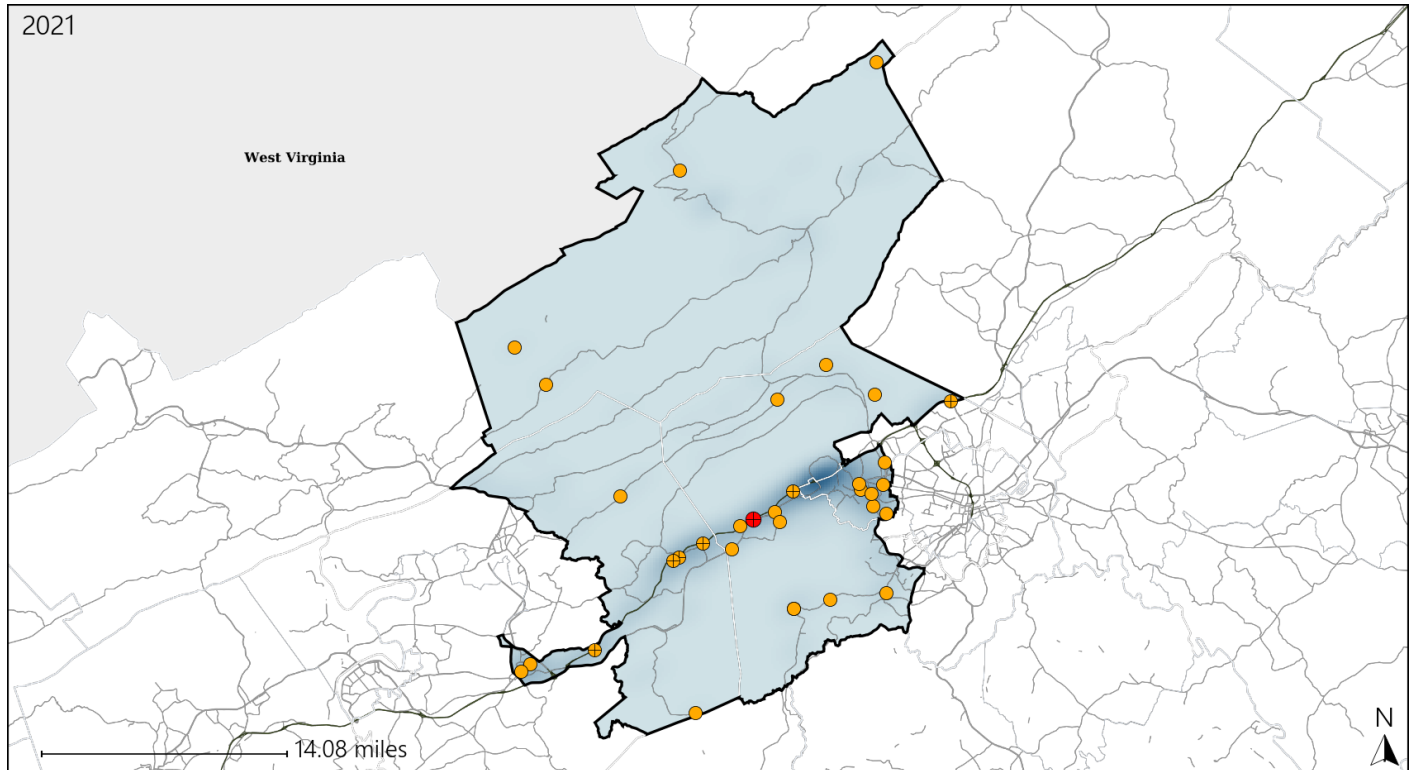


Available Crash Data - Calendar Year (CY)	CY 2018	CY 2019	CY 2020	CY 2021
Total Crashes	1670	1376	1323	1490
Fatal Crashes	7	12	7	6
Injury Crashes	537	375	431	461
Alcohol-Related Fatal Crashes	1	4	2	0
Percent of Alcohol-Related Fatal Crashes to Total Fatal Crashes	14%	33%	29%	0%
Alcohol-Related Injury Crashes	36	23	27	36
Percent of Alcohol-Related Injury Crashes to Total Injury Crashes	7%	6%	6%	8%

Virginia House District 8 Speed Crash Statistics

Report Generated April, 2022

	Count	Highest Time Period(s)	Highest Day(s)	Highest Month(s)
Fatal Crashes	1	3:00pm - 5:59pm	Wednesday	January
Resulting Fatalities	2	(100%)	(100%)	(100%)
Serious Injury Crashes	32	3:00pm - 5:59pm	Tuesday	June • November
		(25%)	(22%)	(32%)



House District 8 Speed-Related Crashes

Interstate Crashes

Non-interstate Crashes

- Fatal
- Serious Injury

- Fatal
- Serious Injury

The blue gradient represents the density of all speed-related crashes.

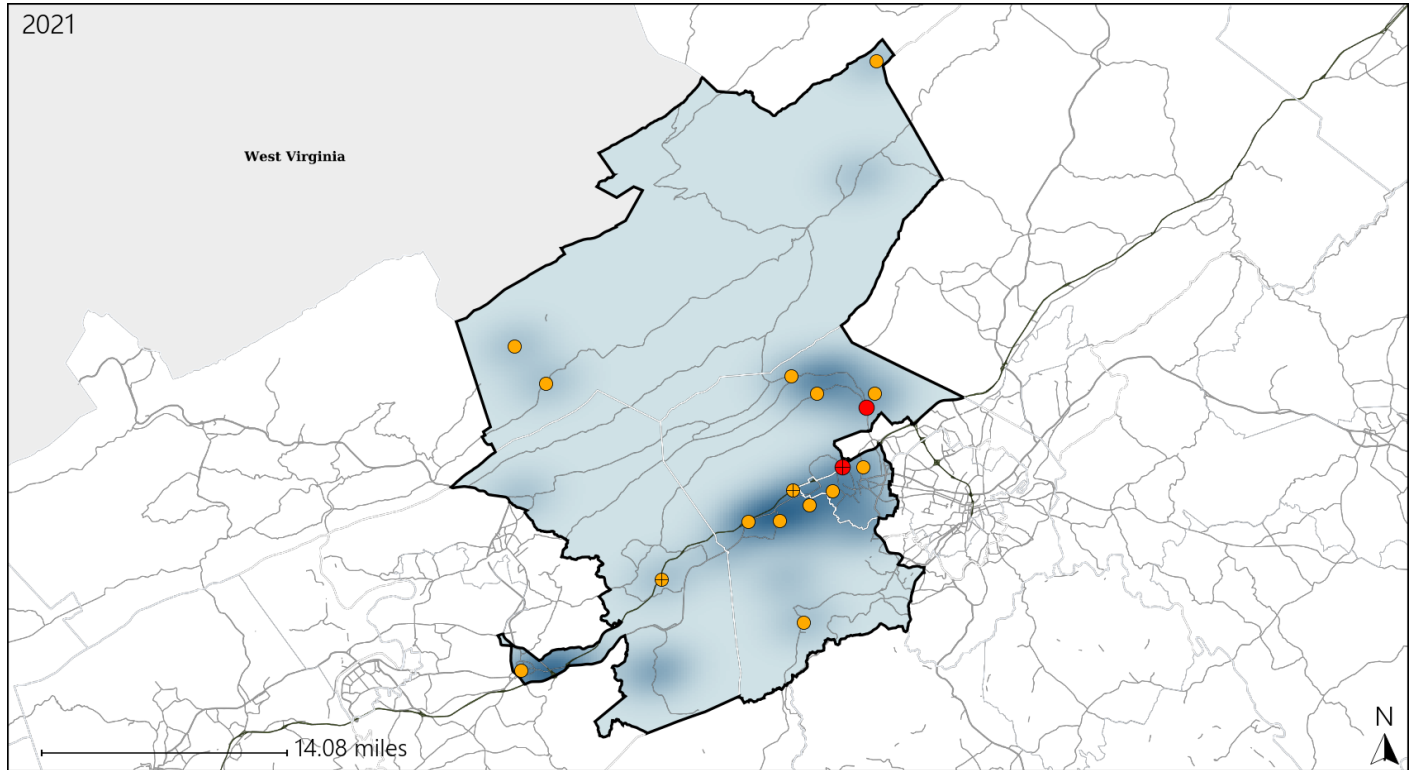


Available Crash Data - Calendar Year (CY)	CY 2018	CY 2019	CY 2020	CY 2021
Total Crashes	1670	1376	1323	1490
Fatal Crashes	7	12	7	6
Injury Crashes	537	375	431	461
Speed-Related Fatal Crashes	2	1	6	1
Percent of Speed-Related Fatal Crashes to Total Fatal Crashes	29%	8%	86%	17%
Speed-Related Injury Crashes	112	84	85	97
Percent of Speed-Related Injury Crashes to Total Injury Crashes	21%	22%	20%	21%

Virginia House District 8 Unrestrained Crash Statistics

Report Generated April, 2022

	Count	Highest Time Period(s)	Highest Day(s)	Highest Month(s)
Fatal Crashes	2	3:00pm - 5:59pm	Sunday • Tuesday	February • January
Unrestrained Fatalities	2	6:00am - 8:59am (100%)	(100%)	(100%)
Serious Injury Crashes	15	3:00pm - 5:59pm (40%)	Sunday (27%)	March (27%)



House District 8 Unrestrained-Related Crashes

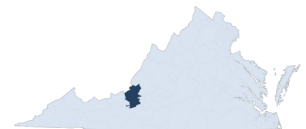
Interstate Crashes

Non-interstate Crashes

- Fatal
- Serious Injury

- Fatal
- Serious Injury

The blue gradient represents the density of all unrestrained-related crashes.

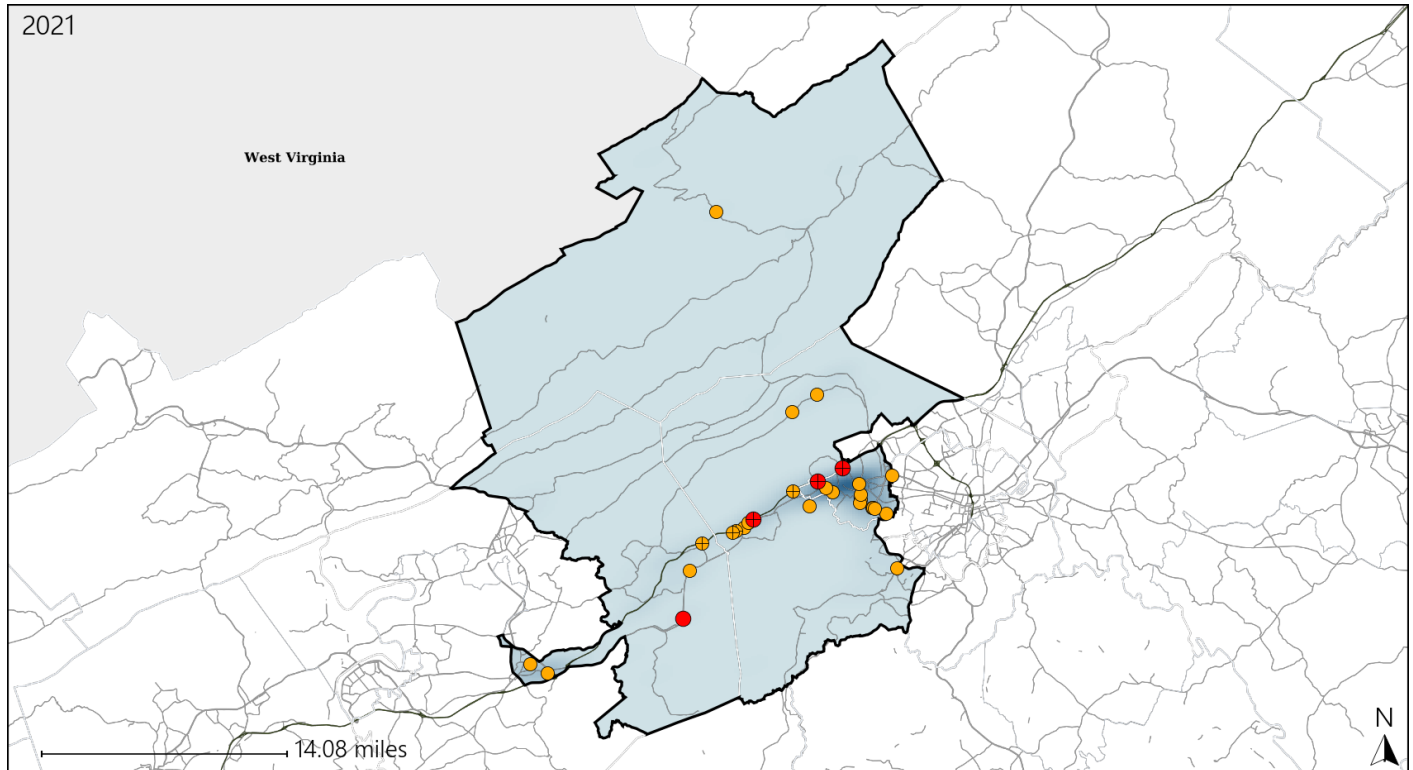


Available Crash Data - Calendar Year (CY)	CY 2018	CY 2019	CY 2020	CY 2021
Total Crashes	1670	1376	1323	1490
Fatalities	8	13	9	7
Injuries	745	492	595	598
Unrestrained Fatalities	3	7	2	2
Percent of Unrestrained Fatalities to Total Fatalities	38%	54%	22%	29%
Unrestrained Injuries	53	25	42	36
Percent of Unrestrained Injuries to Total Injuries	7%	5%	7%	6%

Virginia House District 8 Distracted Driving Crash Statistics

Report Generated April, 2022

	Count	Highest Time Period(s)	Highest Day(s)	Highest Month(s)
Fatal Crashes	4	3:00pm - 5:59pm	Wednesday	February • January
Resulting Fatalities	5	(75%)	(50%)	(50%)
Serious Injury Crashes	25	3:00pm - 5:59pm	Thursday	July
		(28%)	(20%)	(20%)



House District 8 Distracted Driving-Related Crashes

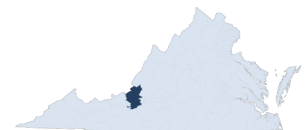
Interstate Crashes

Non-interstate Crashes

- Fatal
- Serious Injury

- Fatal
- Serious Injury

The blue gradient represents the density of all distracted driving-related crashes.



Available Crash Data - Calendar Year (CY)	CY 2018	CY 2019	CY 2020	CY 2021
Total Crashes	1670	1376	1323	1490
Fatal Crashes	7	12	7	6
Injury Crashes	537	375	431	461
Distracted Driving-Related Fatal Crashes	2	1	1	4
Percent of Distracted Driving-Related Fatal Crashes to Total Fatal Crashes	29%	8%	14%	67%
Distracted Driving-Related Injury Crashes	108	58	90	106
Percent of Distracted Driving-Related Injury Crashes to Total Injury Crashes	20%	15%	21%	23%