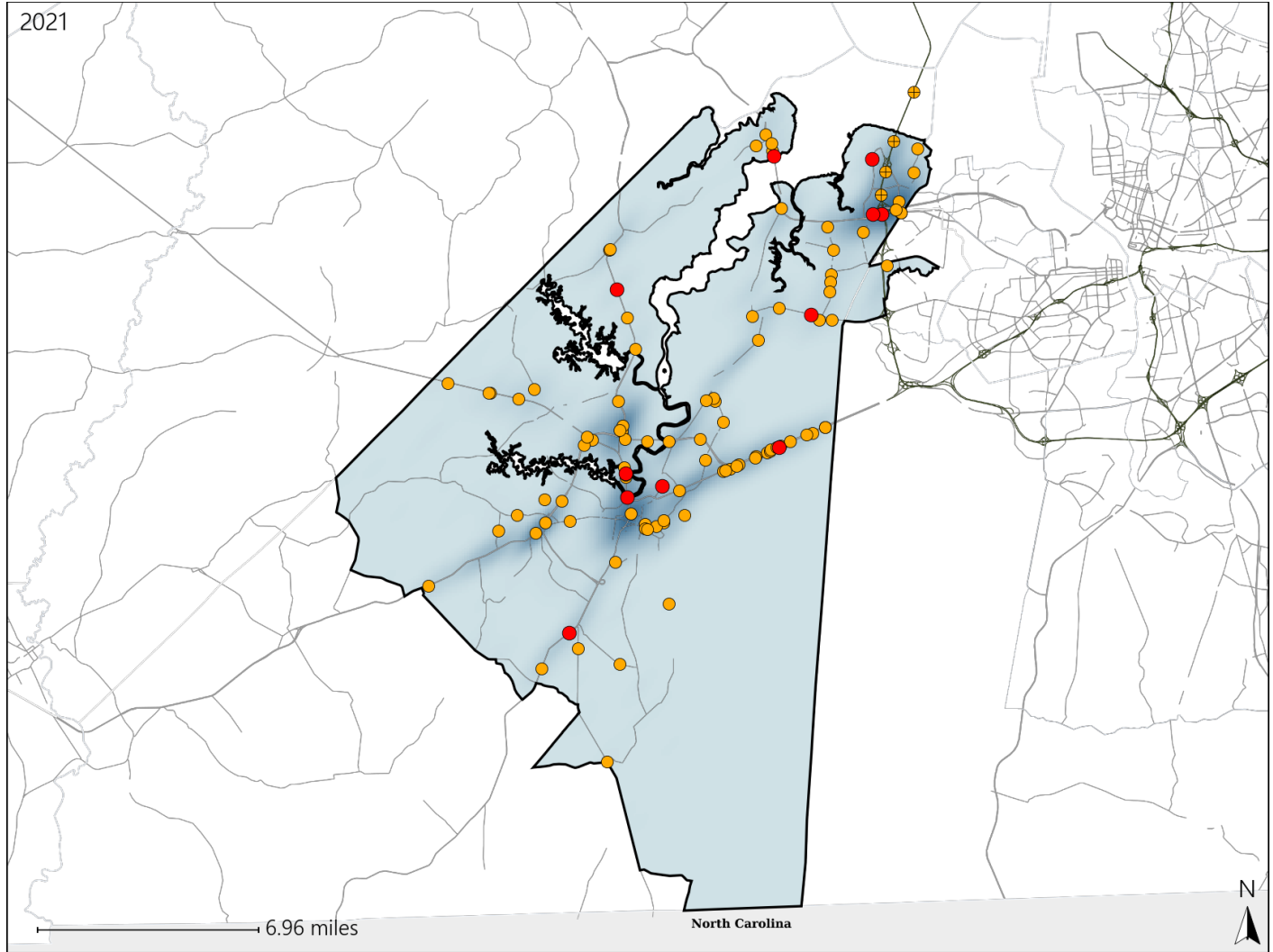


# Virginia House District 76 Crash Statistics

Report Generated April, 2022

	Count	Highest Time Period(s)	Highest Day(s)	Highest Month(s)
<b>Fatal Crashes</b>	<b>11</b>	Noon - 2:59pm	Wednesday	April - August
<b>Resulting Fatalities</b>	<b>11</b>	(36%)	(27%)	(36%)
<b>Serious Injury Crashes</b>	<b>103</b>	Noon - 2:59pm	Saturday	September
		(22%)	(21%)	(21%)



## House District 76 Crashes

Interstate Crashes

- Fatal
- Serious Injury

Non-interstate Crashes

- Fatal
- Serious Injury

The blue gradient represents the density of all crashes.

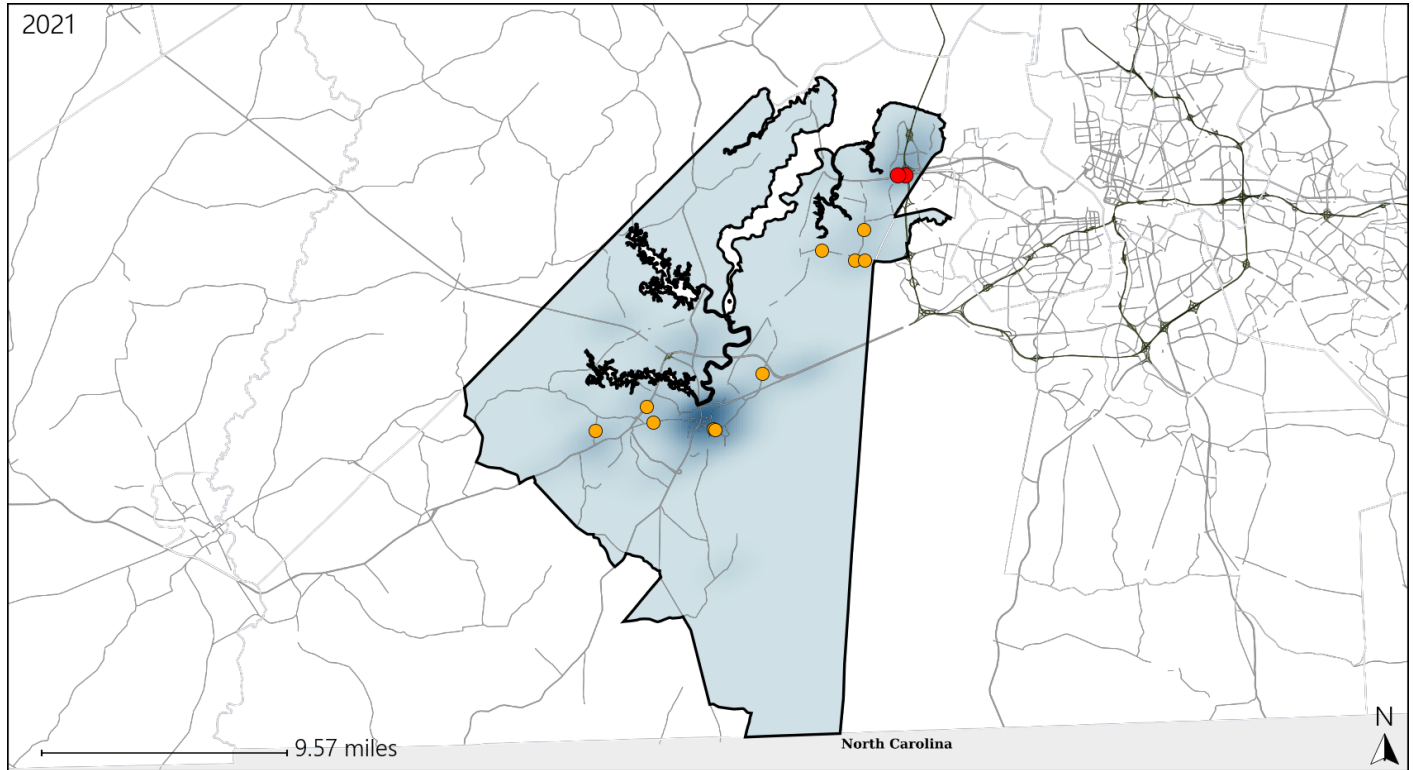


Available Crash Data - Calendar Year (CY)	CY 2018	CY 2019	CY 2020	CY 2021
Total Crashes	1582	1509	1333	1582
Fatal Crashes	3	7	6	11
Injury Crashes	714	723	633	756

# Virginia House District 76 Alcohol Crash Statistics

Report Generated April, 2022

	Count	Highest Time Period(s)	Highest Day(s)	Highest Month(s)
<b>Fatal Crashes</b>	<b>2</b>	Midnight - 2:59am	Monday • Sunday	April • August
<b>Resulting Fatalities</b>	<b>2</b>	Noon - 2:59pm (100%)	(100%)	(100%)
<b>Serious Injury Crashes</b>	<b>10</b>	6:00pm - 8:59pm (50%)	Monday (30%)	May (30%)



## House District 76 Alcohol-Related Crashes

Interstate Crashes

Non-interstate Crashes

● Fatal

● Fatal

● Serious Injury

● Serious Injury

The blue gradient represents the density of all alcohol-related crashes.

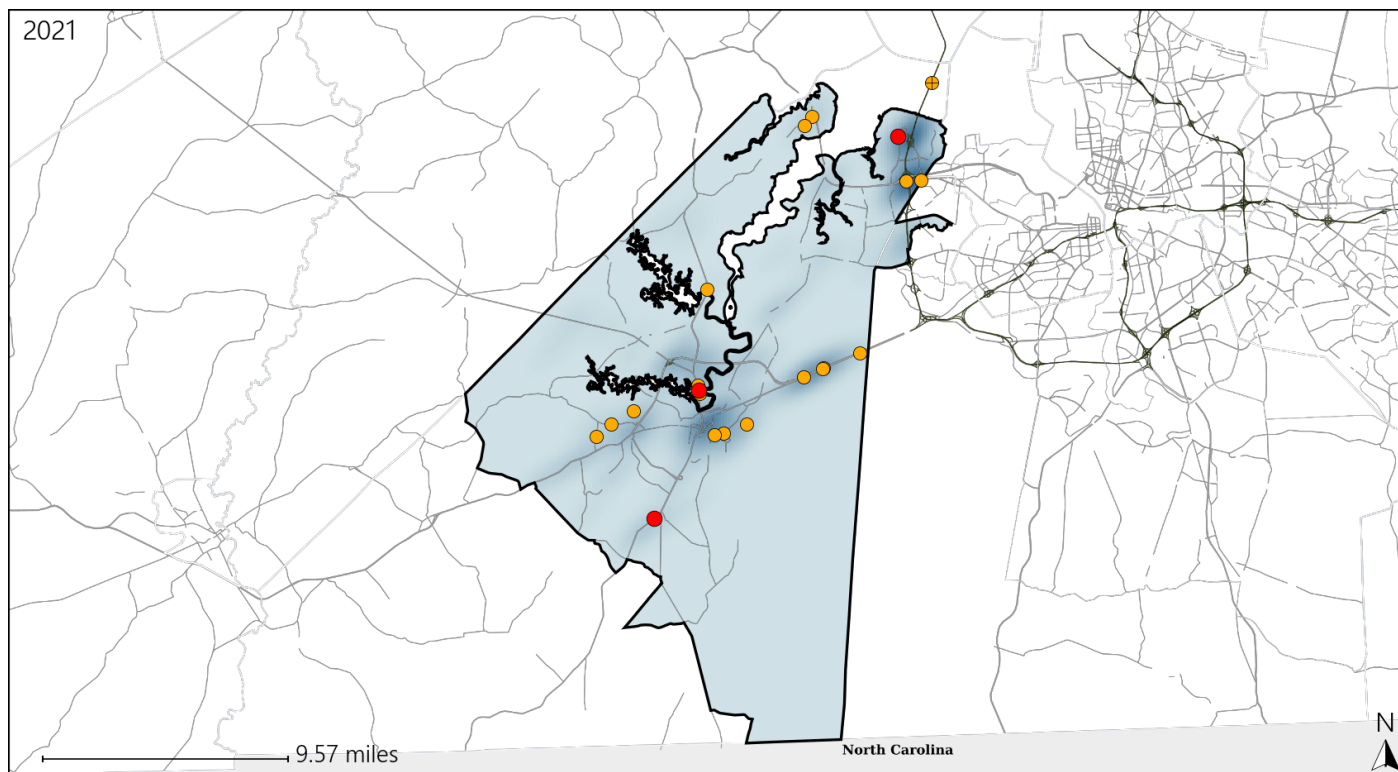


Available Crash Data - Calendar Year (CY)	CY 2018	CY 2019	CY 2020	CY 2021
Total Crashes	1582	1509	1333	1582
Fatal Crashes	3	7	6	11
Injury Crashes	714	723	633	756
Alcohol-Related Fatal Crashes	0	3	2	2
Percent of Alcohol-Related Fatal Crashes to Total Fatal Crashes	0%	43%	33%	18%
Alcohol-Related Injury Crashes	34	48	49	38
Percent of Alcohol-Related Injury Crashes to Total Injury Crashes	5%	7%	8%	5%

# Virginia House District 76 Speed Crash Statistics

Report Generated April, 2022



	Count	Highest Time Period(s)	Highest Day(s)	Highest Month(s)
<b>Fatal Crashes</b>	<b>3</b>	Noon - 2:59pm	Saturday • Thursday	April • November
<b>Resulting Fatalities</b>	<b>3</b>	(67%)	(66%)	(66%)
<b>Serious Injury Crashes</b>	<b>19</b>	3:00pm - 5:59pm 6:00pm - 8:59pm	Sunday	February • October
		(42%)	(32%)	(32%)



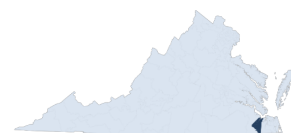
## House District 76 Speed-Related Crashes

Interstate Crashes

Non-interstate Crashes

 Fatal Fatal Serious Injury Serious Injury

The blue gradient represents the density of all speed-related crashes.

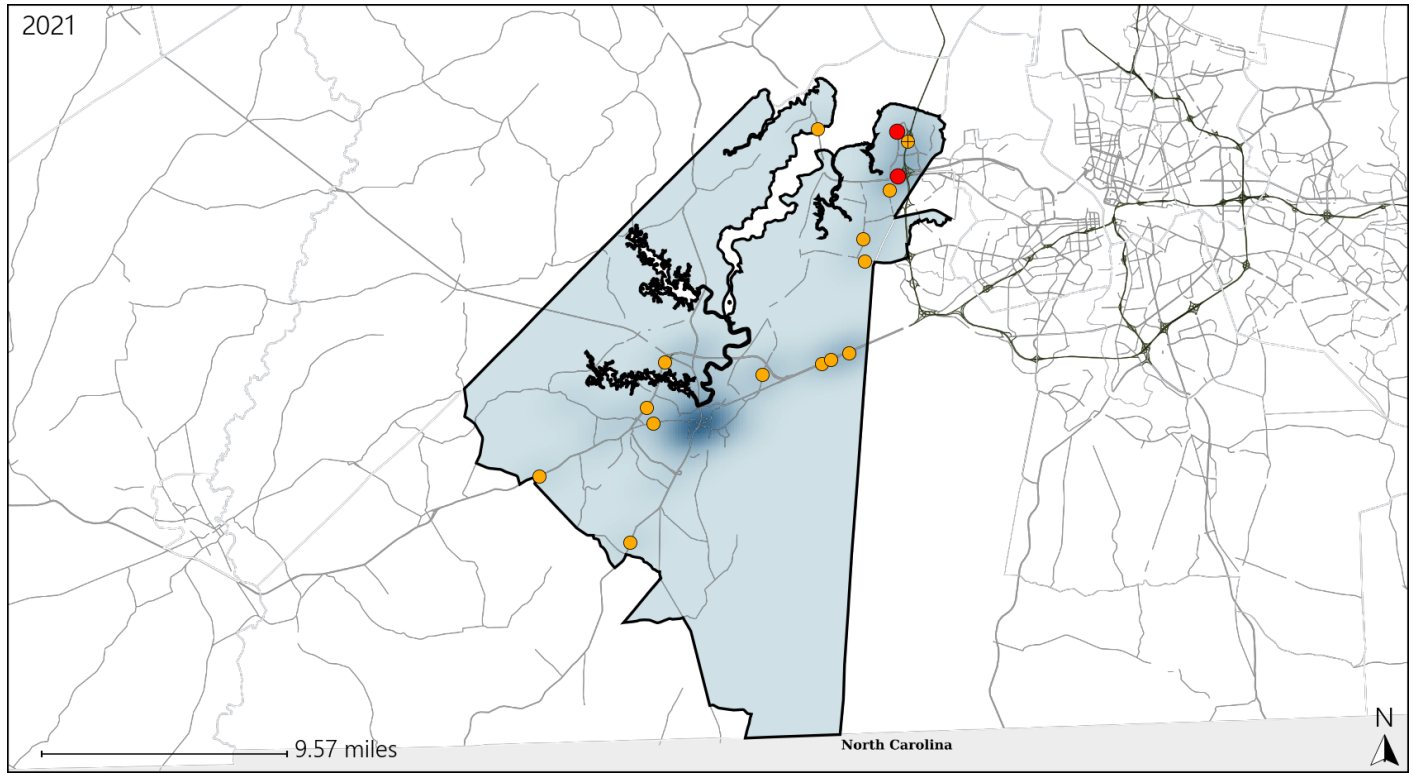


Available Crash Data - Calendar Year (CY)	CY 2018	CY 2019	CY 2020	CY 2021
Total Crashes	1582	1509	1333	1582
Fatal Crashes	3	7	6	11
Injury Crashes	714	723	633	756
Speed-Related Fatal Crashes	1	6	2	3
Percent of Speed-Related Fatal Crashes to Total Fatal Crashes	33%	86%	33%	27%
Speed-Related Injury Crashes	90	98	89	90
Percent of Speed-Related Injury Crashes to Total Injury Crashes	13%	14%	14%	12%

# Virginia House District 76 Unrestrained Crash Statistics

Report Generated April, 2022

	Count	Highest Time Period(s)	Highest Day(s)	Highest Month(s)
<b>Fatal Crashes</b>	<b>2</b>	3:00pm - 5:59pm	Monday • Saturday	April • November
<b>Unrestrained Fatalities</b>	<b>2</b>	Midnight - 2:59am (100%)	(100%)	(100%)
<b>Serious Injury Crashes</b>	<b>14</b>	3:00pm - 5:59pm 6:00pm - 8:59pm (42%)	Saturday (29%)	August (21%)



## House District 76 Unrestrained-Related Crashes

Interstate Crashes

Non-interstate Crashes

- Fatal
- ⊕ Serious Injury

- Fatal
- Serious Injury

The blue gradient represents the density of all unrestrained-related crashes.

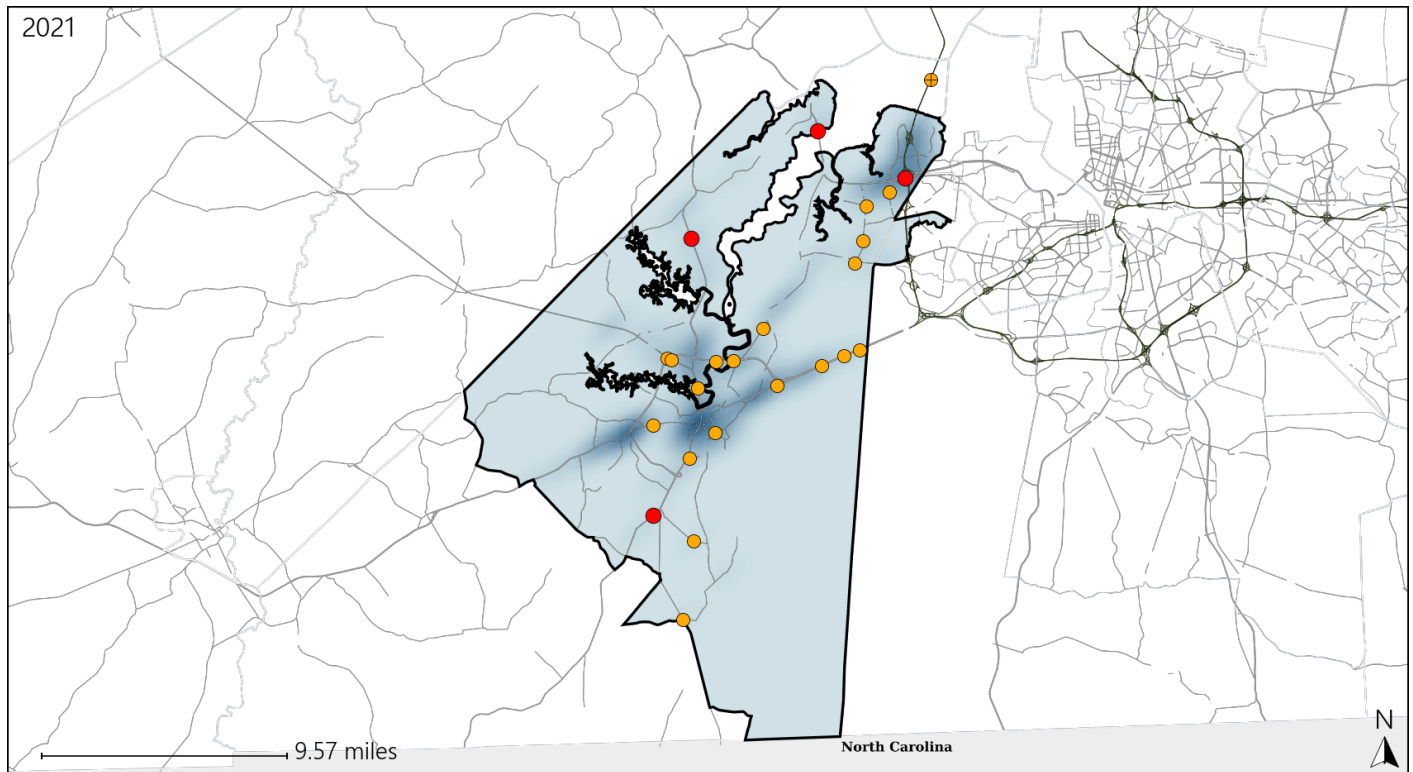


Available Crash Data - Calendar Year (CY)	CY 2018	CY 2019	CY 2020	CY 2021
Total Crashes	1582	1509	1333	1582
Fatalities	3	7	6	11
Injuries	1048	1103	911	1098
Unrestrained Fatalities	3	2	3	2
Percent of Unrestrained Fatalities to Total Fatalities	100%	29%	50%	18%
Unrestrained Injuries	38	50	40	59
Percent of Unrestrained Injuries to Total Injuries	4%	5%	4%	5%

# Virginia House District 76 Distracted Driving Crash Statistics

Report Generated April, 2022

	Count	Highest Time Period(s)	Highest Day(s)	Highest Month(s)
<b>Fatal Crashes</b>	<b>4</b>	3:00pm - 5:59pm	Friday • Sunday	August • November
<b>Resulting Fatalities</b>	<b>4</b>	Noon - 2:59pm (100%)	(50%)	(50%)
<b>Serious Injury Crashes</b>	<b>20</b>	6:00am - 8:59am Noon - 2:59pm (50%)	Tuesday • Wednesday (50%)	September (25%)



## House District 76 Distracted Driving-Related Crashes

Interstate Crashes

Non-interstate Crashes

● Fatal

● Fatal

⊕ Serious Injury

⊕ Serious Injury

The blue gradient represents the density of all distracted driving-related crashes.



Available Crash Data - Calendar Year (CY)	CY 2018	CY 2019	CY 2020	CY 2021
Total Crashes	1582	1509	1333	1582
Fatal Crashes	3	7	6	11
Injury Crashes	714	723	633	756
Distracted Driving-Related Fatal Crashes	1	1	1	4
Percent of Distracted Driving-Related Fatal Crashes to Total Fatal Crashes	33%	14%	17%	36%
Distracted Driving-Related Injury Crashes	140	124	100	123
Percent of Distracted Driving-Related Injury Crashes to Total Injury Crashes	20%	17%	16%	16%