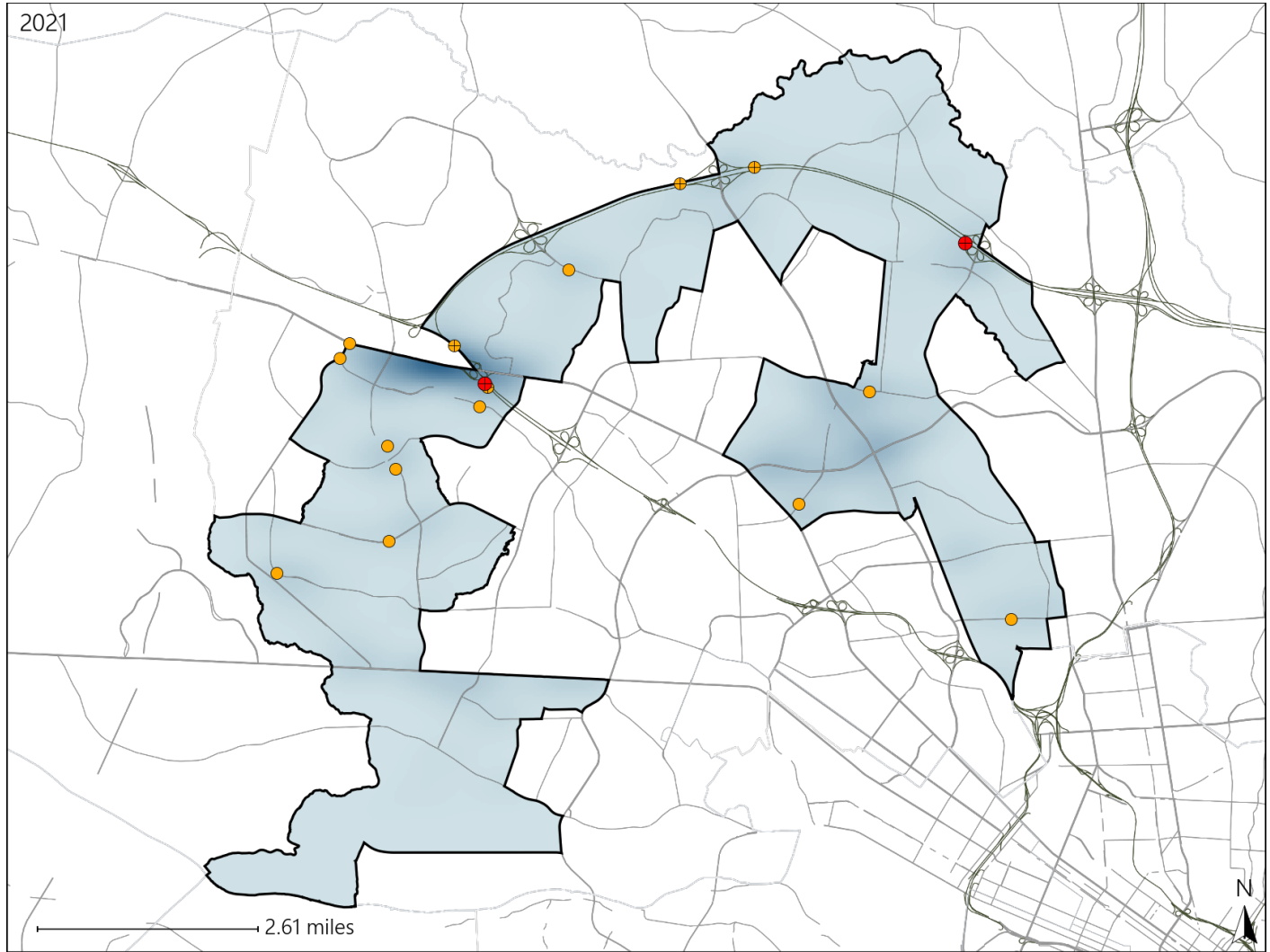


# Virginia House District 72 Crash Statistics

Report Generated April, 2022

	Count	Highest Time Period(s)	Highest Day(s)	Highest Month(s)
<b>Fatal Crashes</b>	<b>2</b>	<b>6:00pm - 8:59pm</b>	<b>Sunday • Tuesday</b>	<b>April • March</b>
<b>Resulting Fatalities</b>	<b>2</b>	<b>Midnight - 2:59am</b> (100%)	<b>(100%)</b>	<b>(100%)</b>
<b>Serious Injury Crashes</b>	<b>16</b>	<b>3:00pm - 5:59pm</b> (38%)	<b>Saturday • Tuesday</b> (50%)	<b>September</b> (25%)



## House District 72 Crashes

Interstate Crashes

- Fatal
- Serious Injury

Non-interstate Crashes

- Fatal
- Serious Injury

The blue gradient represents the density of all crashes.



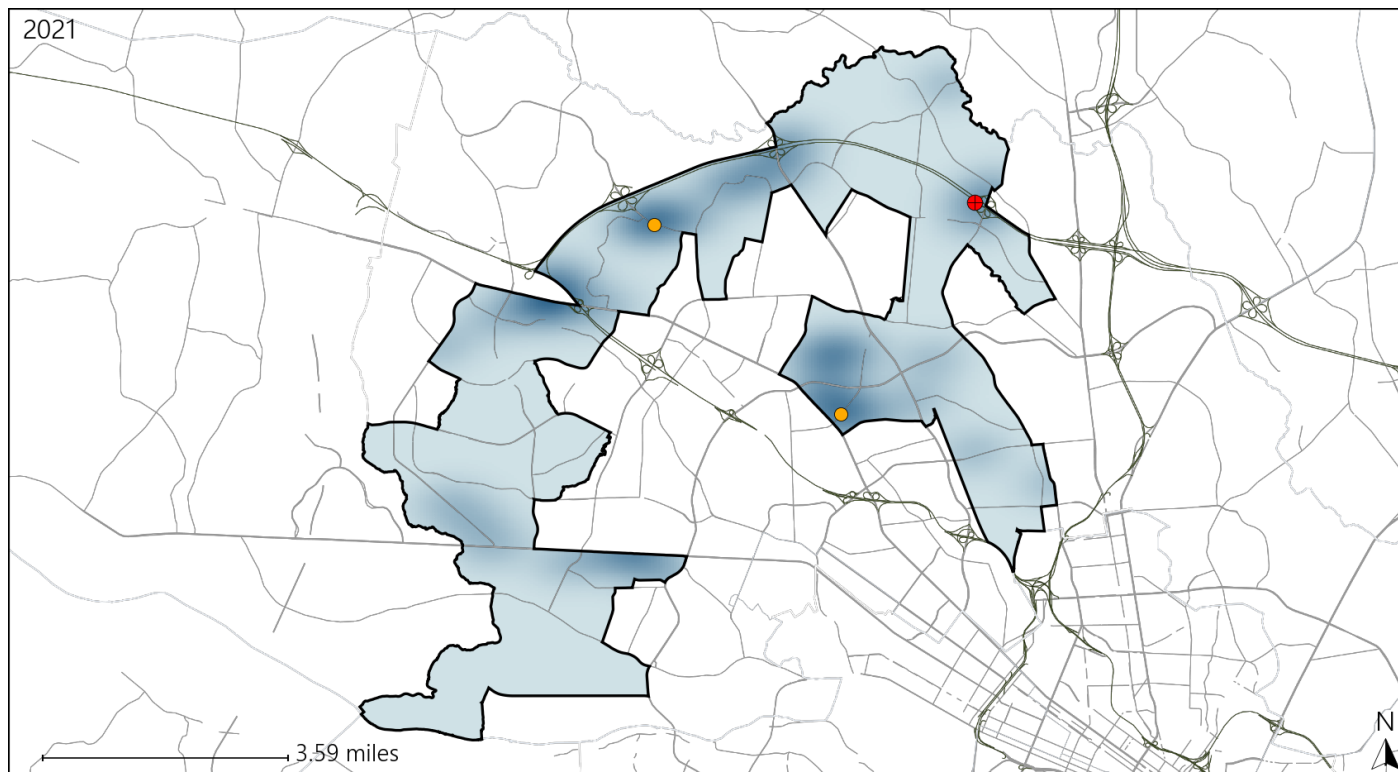
Available Crash Data - Calendar Year (CY)	CY 2018	CY 2019	CY 2020	CY 2021
Total Crashes	1193	1066	764	844
Fatal Crashes	4	3	4	2
Injury Crashes	293	273	183	209

Report of Crashes for January 1<sup>st</sup> - December 31<sup>st</sup>, 2021

# Virginia House District 72 Alcohol Crash Statistics

Report Generated April, 2022

	Count	Highest Time Period(s)	Highest Day(s)	Highest Month(s)
<b>Fatal Crashes</b>	<b>1</b>	<b>Midnight - 2:59am</b>	<b>Sunday</b>	<b>March</b>
<b>Resulting Fatalities</b>	<b>1</b>	<b>(100%)</b>	<b>(100%)</b>	<b>(100%)</b>
<b>Serious Injury Crashes</b>	<b>2</b>	<b>6:00pm - 8:59pm</b>	<b>Saturday • Tuesday</b>	<b>August • July</b>
		<b>(100%)</b>	<b>(100%)</b>	<b>(100%)</b>



## House District 72 Alcohol-Related Crashes

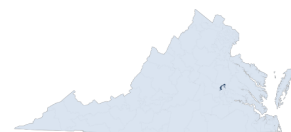
Interstate Crashes

- Fatal
- Serious Injury

Non-interstate Crashes

- Fatal
- Serious Injury

The blue gradient represents the density of all alcohol-related crashes.

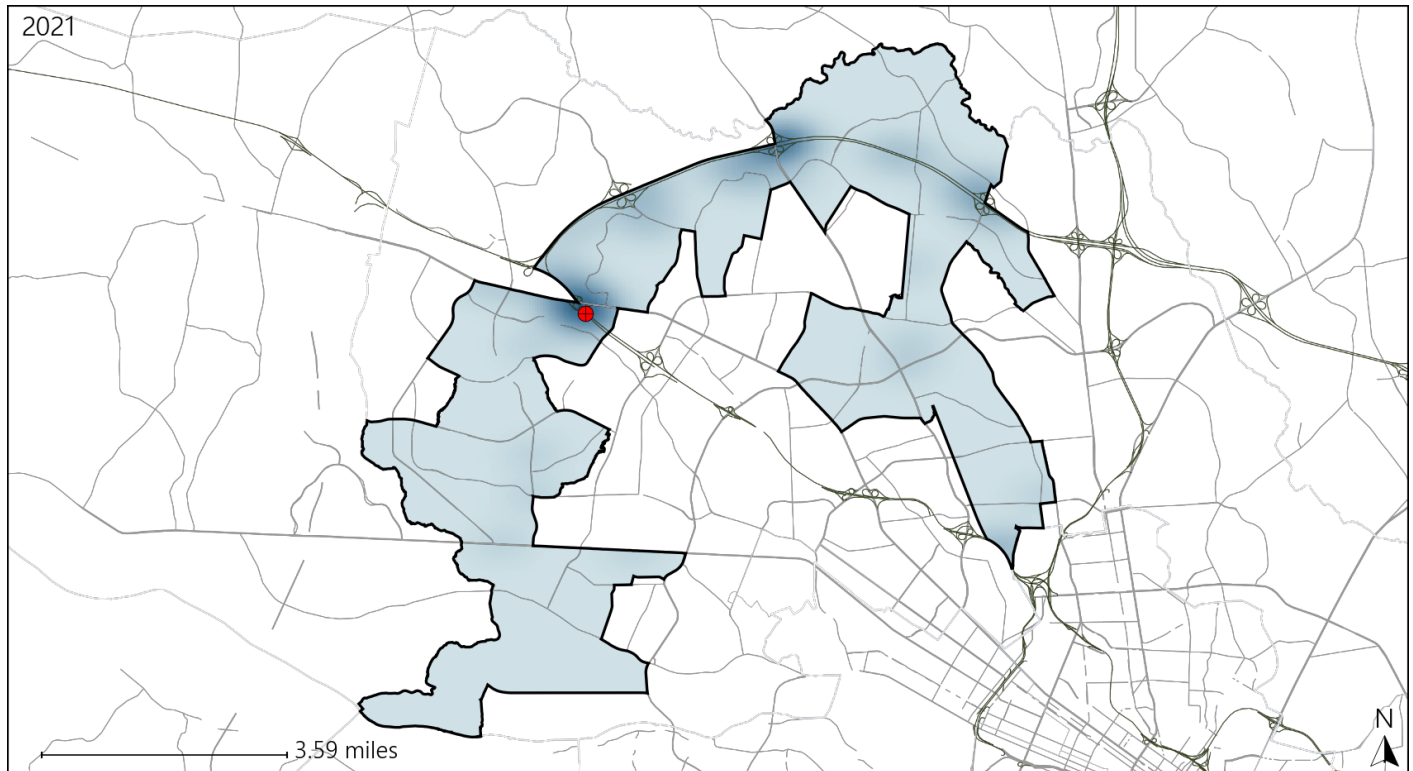


Available Crash Data - Calendar Year (CY)	CY 2018	CY 2019	CY 2020	CY 2021
Total Crashes	1193	1066	764	844
Fatal Crashes	4	3	4	2
Injury Crashes	293	273	183	209
Alcohol-Related Fatal Crashes	1	2	0	1
Percent of Alcohol-Related Fatal Crashes to Total Fatal Crashes	25%	67%	0%	50%
Alcohol-Related Injury Crashes	17	13	10	9
Percent of Alcohol-Related Injury Crashes to Total Injury Crashes	6%	5%	5%	4%

# Virginia House District 72 Speed Crash Statistics

Report Generated April, 2022

	Count	Highest Time Period(s)	Highest Day(s)	Highest Month(s)
<b>Fatal Crashes</b>	<b>1</b>	<b>6:00pm - 8:59pm</b>	<b>Tuesday</b>	<b>April</b>
<b>Resulting Fatalities</b>	<b>1</b>	<b>(100%)</b>	<b>(100%)</b>	<b>(100%)</b>
<b>Serious Injury Crashes</b>	<b>0</b>	<b>-</b>	<b>-</b>	<b>-</b>



## House District 72 Speed-Related Crashes

Interstate Crashes

Non-interstate Crashes

● Fatal

● Fatal

● Serious Injury

● Serious Injury

The blue gradient represents the density of all speed-related crashes.



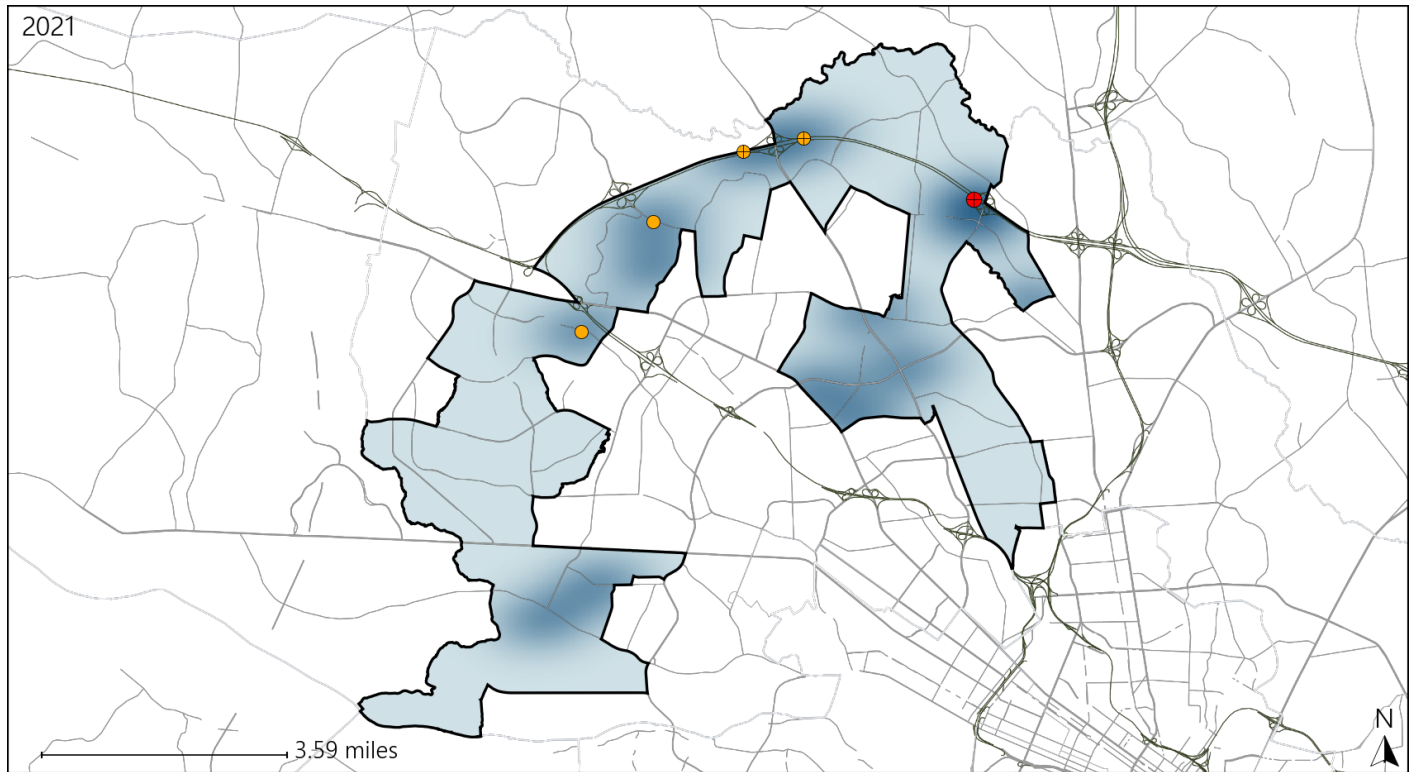
Available Crash Data - Calendar Year (CY)	CY 2018	CY 2019	CY 2020	CY 2021
Total Crashes	1193	1066	764	844
Fatal Crashes	4	3	4	2
Injury Crashes	293	273	183	209
Speed-Related Fatal Crashes	2	1	0	1
Percent of Speed-Related Fatal Crashes to Total Fatal Crashes	50%	33%	0%	50%
Speed-Related Injury Crashes	25	22	9	14
Percent of Speed-Related Injury Crashes to Total Injury Crashes	9%	8%	5%	7%

Report of Crashes for January 1<sup>st</sup> - December 31<sup>st</sup>, 2021

# Virginia House District 72 Unrestrained Crash Statistics

Report Generated April, 2022

	Count	Highest Time Period(s)	Highest Day(s)	Highest Month(s)
<b>Fatal Crashes</b>	<b>1</b>	<b>Midnight - 2:59am</b>	<b>Sunday</b>	<b>March</b>
<b>Unrestrained Fatalities</b>	<b>1</b>	<b>(100%)</b>	<b>(100%)</b>	<b>(100%)</b>
<b>Serious Injury Crashes</b>	<b>4</b>	<b>3:00pm - 5:59pm 6:00pm - 8:59pm</b>	<b>Friday • Saturday</b>	<b>July</b>
		<b>(50%)</b>	<b>(50%)</b>	<b>(50%)</b>



## House District 72 Unrestrained-Related Crashes

Interstate Crashes

Non-interstate Crashes

- Fatal
- Serious Injury

- Fatal
- Serious Injury

The blue gradient represents the density of all unrestrained-related crashes.

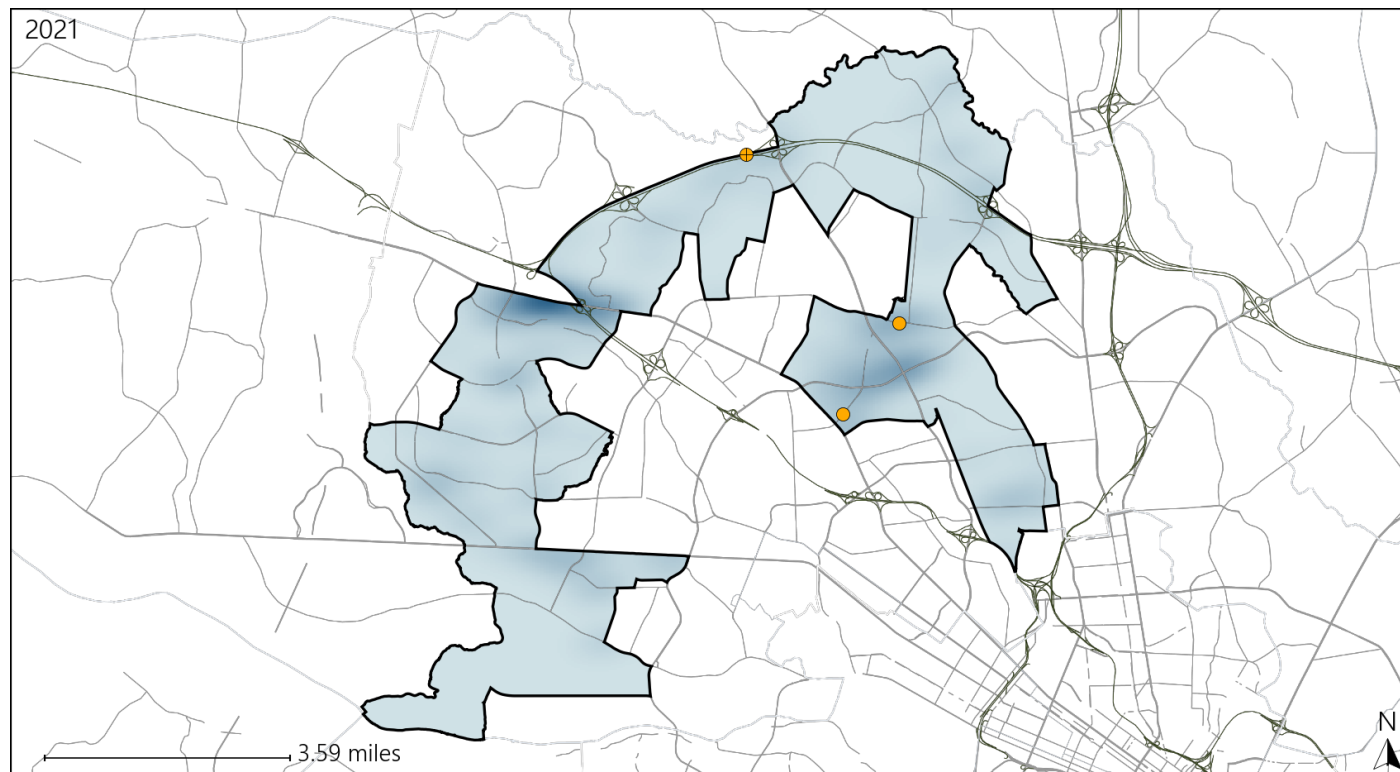


Available Crash Data - Calendar Year (CY)	CY 2018	CY 2019	CY 2020	CY 2021
Total Crashes	1193	1066	764	844
Fatalities	4	3	4	2
Injuries	518	446	319	367
Unrestrained Fatalities	1	0	0	1
Percent of Unrestrained Fatalities to Total Fatalities	25%	0%	0%	50%
Unrestrained Injuries	20	20	9	16
Percent of Unrestrained Injuries to Total Injuries	4%	4%	3%	4%

# Virginia House District 72 Distracted Driving Crash Statistics

Report Generated April, 2022

	Count	Highest Time Period(s)	Highest Day(s)	Highest Month(s)
<b>Fatal Crashes</b>	<b>0</b>	-	-	-
<b>Resulting Fatalities</b>	<b>0</b>	-	-	-
<b>Serious Injury Crashes</b>	<b>3</b>	<b>6:00pm - 8:59pm</b> (67%)	<b>Friday • Saturday</b> (66%)	<b>August • July</b> (66%)



## House District 72 Distracted Driving-Related Crashes

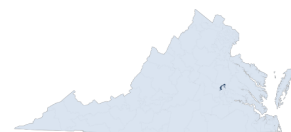
Interstate Crashes

Non-interstate Crashes

- Fatal
- Serious Injury

- Fatal
- Serious Injury

The blue gradient represents the density of all distracted driving-related crashes.



Available Crash Data - Calendar Year (CY)	CY 2018	CY 2019	CY 2020	CY 2021
Total Crashes	1193	1066	764	844
Fatal Crashes	4	3	4	2
Injury Crashes	293	273	183	209
Distracted Driving-Related Fatal Crashes	0	0	1	0
Percent of Distracted Driving-Related Fatal Crashes to Total Fatal Crashes	0%	0%	25%	0%
Distracted Driving-Related Injury Crashes	62	45	41	29
Percent of Distracted Driving-Related Injury Crashes to Total Injury Crashes	21%	16%	22%	14%