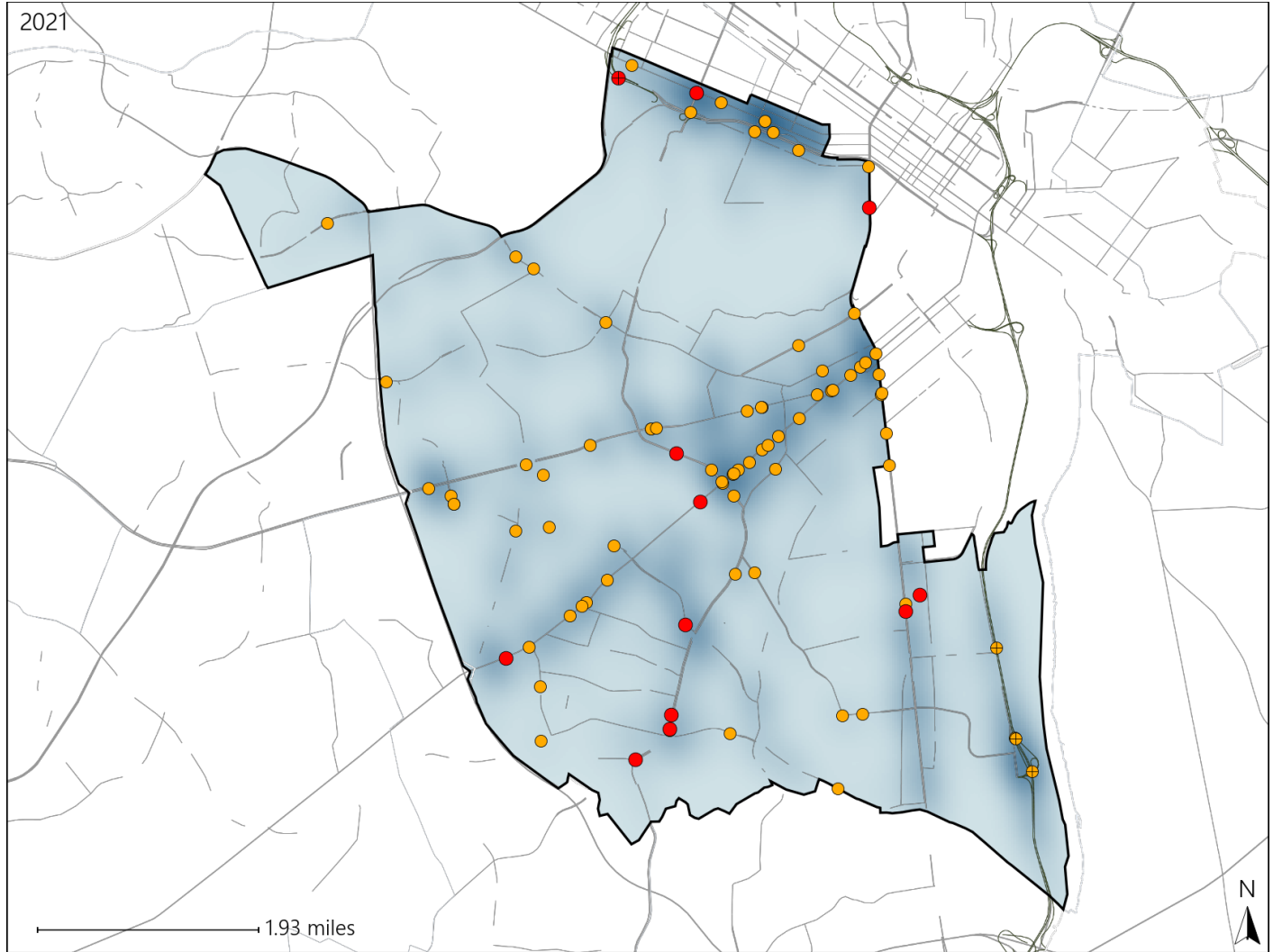


# Virginia House District 69 Crash Statistics

Report Generated April, 2022

	Count	Highest Time Period(s)	Highest Day(s)	Highest Month(s)
<b>Fatal Crashes</b>	<b>12</b>	<b>Midnight - 2:59am</b>	<b>Saturday</b>	<b>April • May</b>
<b>Resulting Fatalities</b>	<b>12</b>	<b>(42%)</b>	<b>(33%)</b>	<b>(34%)</b>
<b>Serious Injury Crashes</b>	<b>77</b>	<b>6:00pm - 8:59pm</b>	<b>Saturday • Wednesday</b>	<b>August • October</b>
		<b>(22%)</b>	<b>(38%)</b>	<b>(24%)</b>



## House District 69 Crashes

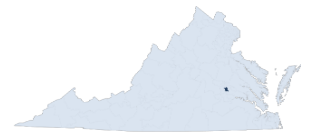
Interstate Crashes

- Fatal
- Serious Injury

Non-interstate Crashes

- Fatal
- Serious Injury

The blue gradient represents the density of all crashes.

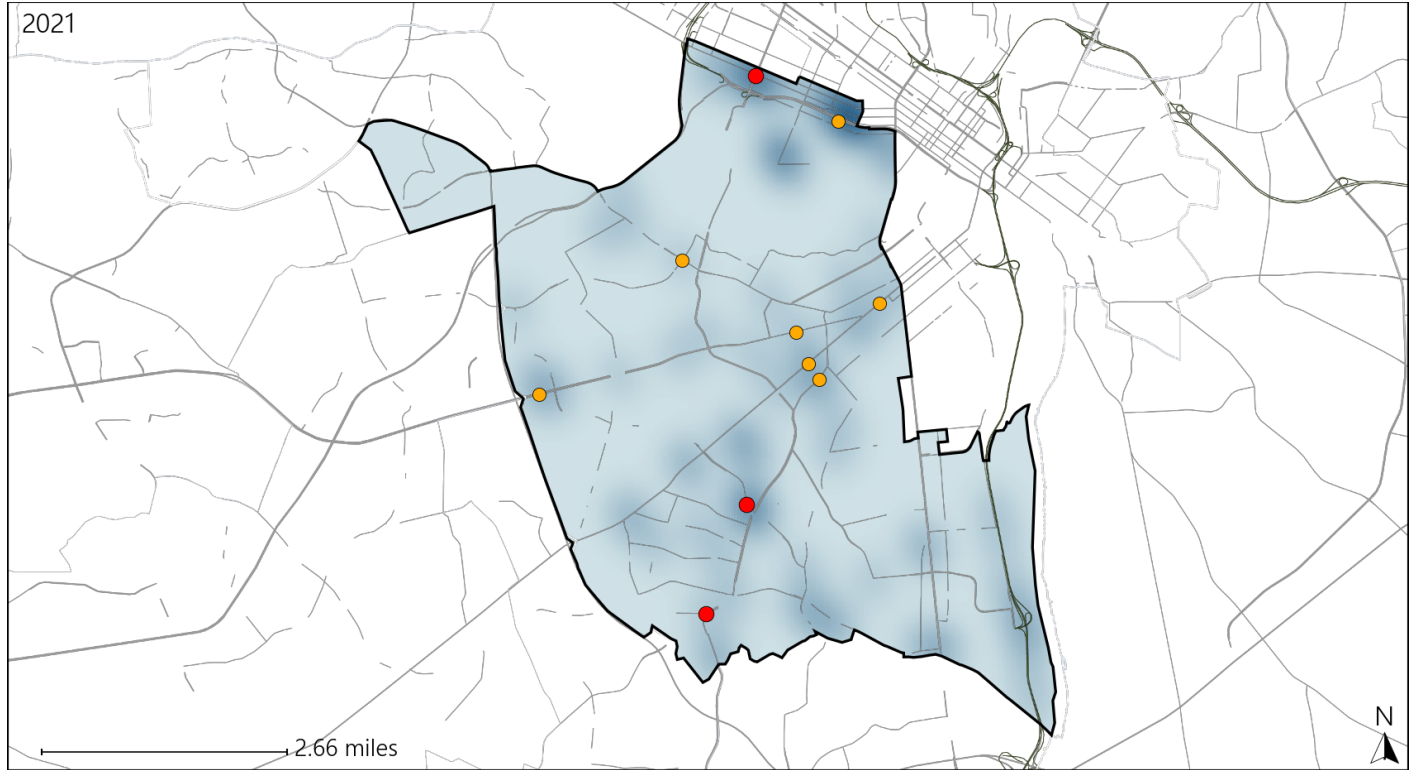


Available Crash Data - Calendar Year (CY)	CY 2018	CY 2019	CY 2020	CY 2021
Total Crashes	1732	1704	1641	1698
Fatal Crashes	10	6	11	12
Injury Crashes	541	563	508	468

# Virginia House District 69 Alcohol Crash Statistics

Report Generated April, 2022

	Count	Highest Time Period(s)	Highest Day(s)	Highest Month(s)
<b>Fatal Crashes</b>	<b>3</b>	<b>Midnight - 2:59am</b>	<b>Monday • Thursday</b>	<b>April • May</b>
<b>Resulting Fatalities</b>	<b>3</b>	<b>(67%)</b>	<b>(66%)</b>	<b>(66%)</b>
<b>Serious Injury Crashes</b>	<b>7</b>	<b>9:00pm - 11:59pm</b>	<b>Saturday</b>	<b>January • June</b>
		<b>(43%)</b>	<b>(57%)</b>	<b>(58%)</b>



## House District 69 Alcohol-Related Crashes

Interstate Crashes

Non-interstate Crashes

● Fatal

● Fatal

● Serious Injury

● Serious Injury

The blue gradient represents the density of all alcohol-related crashes.



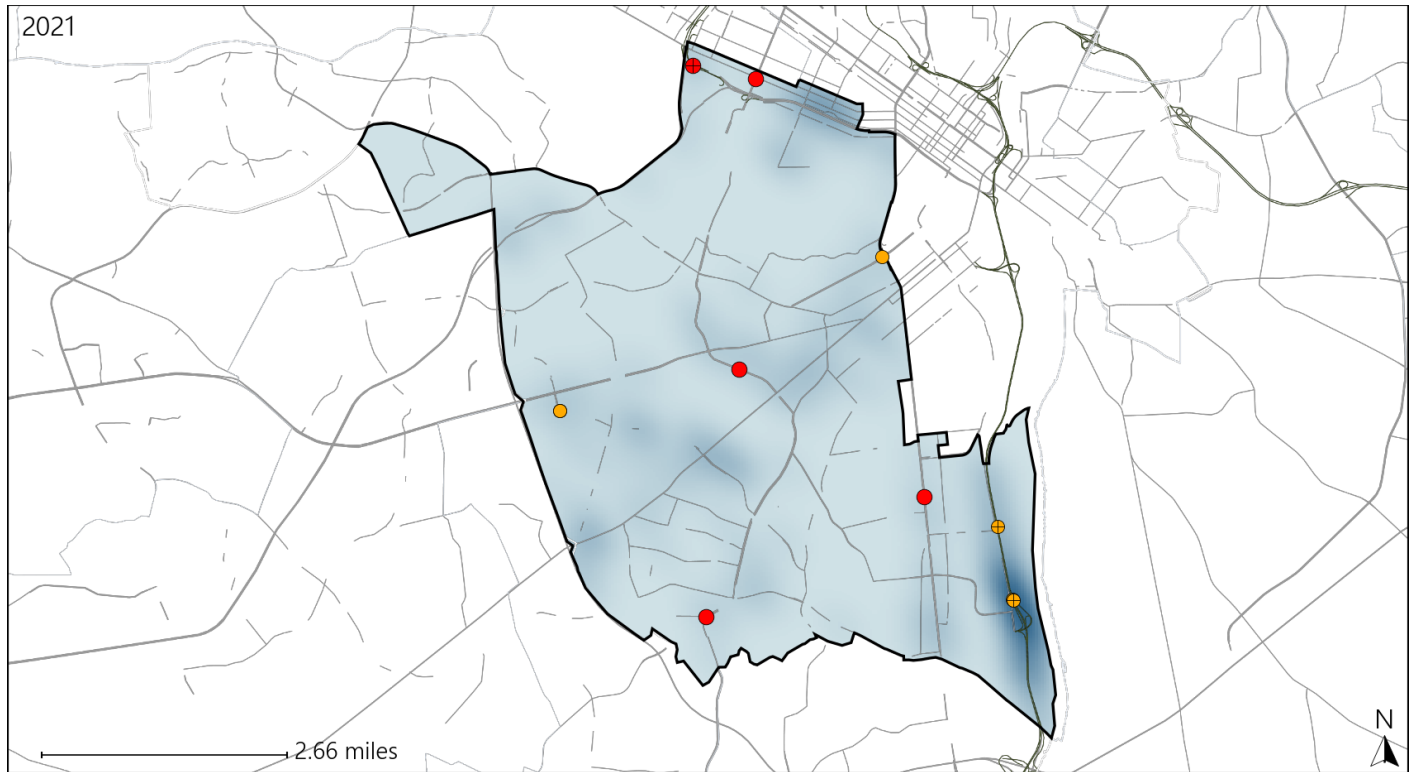
Available Crash Data - Calendar Year (CY)	CY 2018	CY 2019	CY 2020	CY 2021
Total Crashes	1732	1704	1641	1698
Fatal Crashes	10	6	11	12
Injury Crashes	541	563	508	468
Alcohol-Related Fatal Crashes	5	1	4	3
Percent of Alcohol-Related Fatal Crashes to Total Fatal Crashes	50%	17%	36%	25%
Alcohol-Related Injury Crashes	40	47	21	25
Percent of Alcohol-Related Injury Crashes to Total Injury Crashes	7%	8%	4%	5%

Report of Crashes for January 1<sup>st</sup> - December 31<sup>st</sup>, 2021

# Virginia House District 69 Speed Crash Statistics

Report Generated April, 2022

	Count	Highest Time Period(s)	Highest Day(s)	Highest Month(s)
<b>Fatal Crashes</b>	<b>5</b>	3:00am - 5:59am	Saturday	May
<b>Resulting Fatalities</b>	<b>5</b>	6:00pm - 8:59pm (40%)	(40%)	(40%)
<b>Serious Injury Crashes</b>	<b>6</b>	6:00pm - 8:59pm (33%)	Monday • Sunday (66%)	October (33%)



## House District 69 Speed-Related Crashes

Interstate Crashes

Non-interstate Crashes

● Fatal

● Fatal

● Serious Injury

● Serious Injury

The blue gradient represents the density of all speed-related crashes.

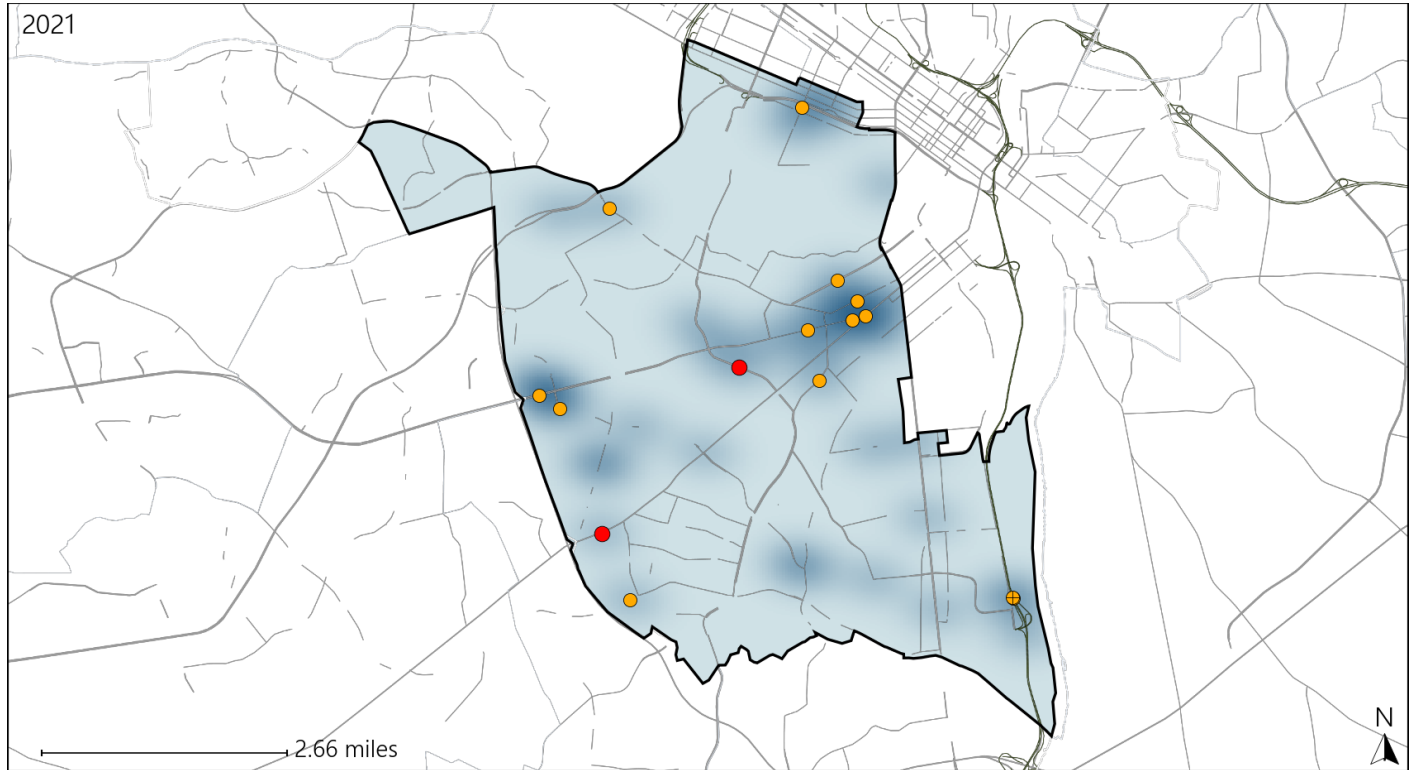


Available Crash Data - Calendar Year (CY)	CY 2018	CY 2019	CY 2020	CY 2021
Total Crashes	1732	1704	1641	1698
Fatal Crashes	10	6	11	12
Injury Crashes	541	563	508	468
Speed-Related Fatal Crashes	2	1	3	5
Percent of Speed-Related Fatal Crashes to Total Fatal Crashes	20%	17%	27%	42%
Speed-Related Injury Crashes	45	48	51	59
Percent of Speed-Related Injury Crashes to Total Injury Crashes	8%	9%	10%	13%

# Virginia House District 69 Unrestrained Crash Statistics

Report Generated April, 2022

	Count	Highest Time Period(s)	Highest Day(s)	Highest Month(s)
<b>Fatal Crashes</b>	<b>2</b>	6:00pm - 8:59pm	Monday • Saturday	June • March
<b>Unrestrained Fatalities</b>	<b>2</b>	Midnight - 2:59am (100%)	(100%)	(100%)
<b>Serious Injury Crashes</b>	<b>13</b>	6:00pm - 8:59pm (46%)	Thursday (38%)	April • January (30%)



## House District 69 Unrestrained-Related Crashes

Interstate Crashes

Non-interstate Crashes

- Fatal
- Serious Injury

- Fatal
- Serious Injury

The blue gradient represents the density of all unrestrained-related crashes.

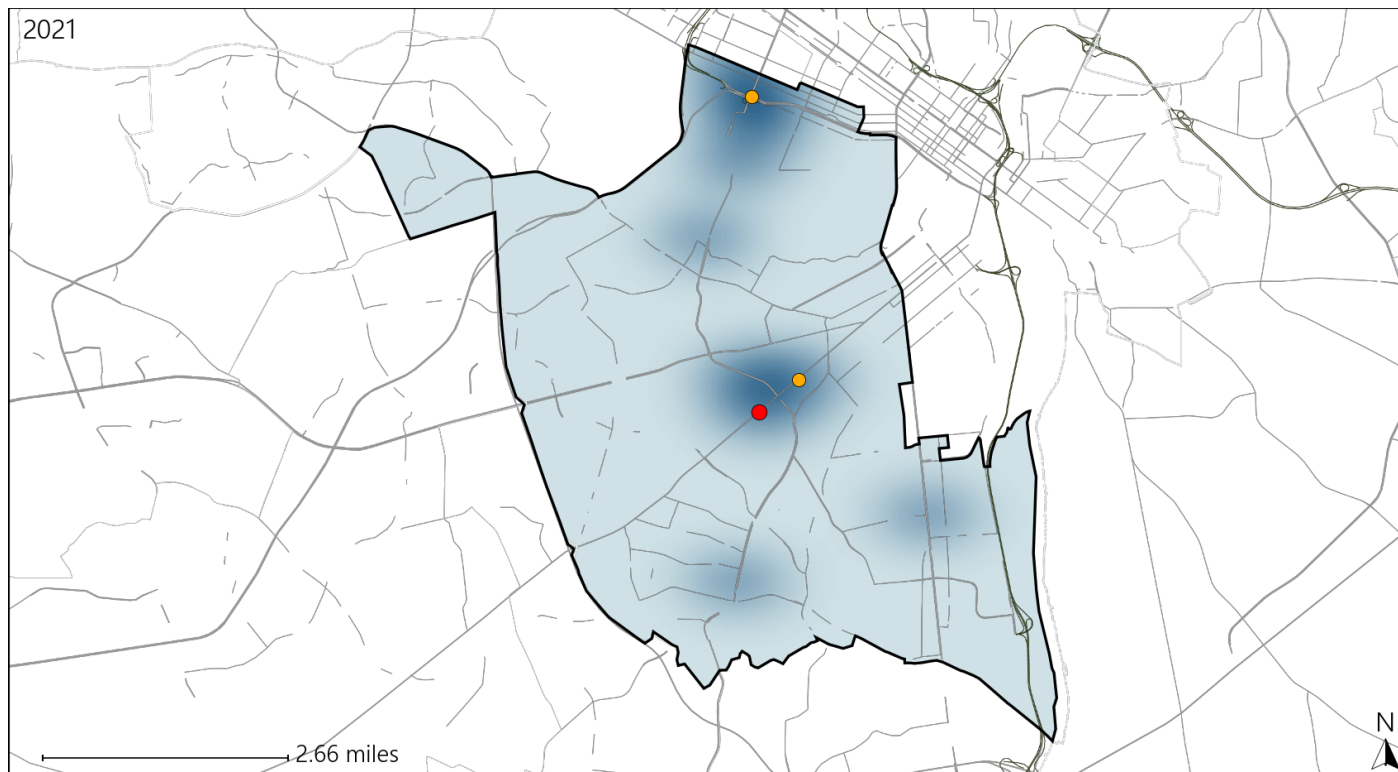


Available Crash Data - Calendar Year (CY)	CY 2018	CY 2019	CY 2020	CY 2021
Total Crashes	1732	1704	1641	1698
Fatalities	10	6	11	12
Injuries	939	942	853	832
Unrestrained Fatalities	2	3	2	2
Percent of Unrestrained Fatalities to Total Fatalities	20%	50%	18%	17%
Unrestrained Injuries	52	59	60	47
Percent of Unrestrained Injuries to Total Injuries	6%	6%	7%	6%

# Virginia House District 69 Bicycle Crash Statistics

Report Generated April, 2022

	Count	Highest Time Period(s)	Highest Day(s)	Highest Month(s)
<b>Fatal Crashes</b>	<b>1</b>	<b>Midnight - 2:59am</b>	<b>Sunday</b>	<b>August</b>
<b>Bicycle Fatalities</b>	<b>1</b>	<b>(100%)</b>	<b>(100%)</b>	<b>(100%)</b>
<b>Serious Injury Crashes</b>	<b>2</b>	<b>9:00am - 11:59am</b>	<b>Friday</b>	<b>July • May</b>
		<b>(100%)</b>	<b>(100%)</b>	<b>(100%)</b>



## House District 69 Bicycle-Related Crashes

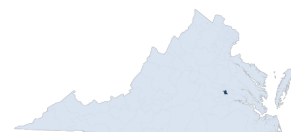
Interstate Crashes

- Fatal
- Serious Injury

Non-interstate Crashes

- Fatal
- Serious Injury

The blue gradient represents the density of all bicycle-related crashes.



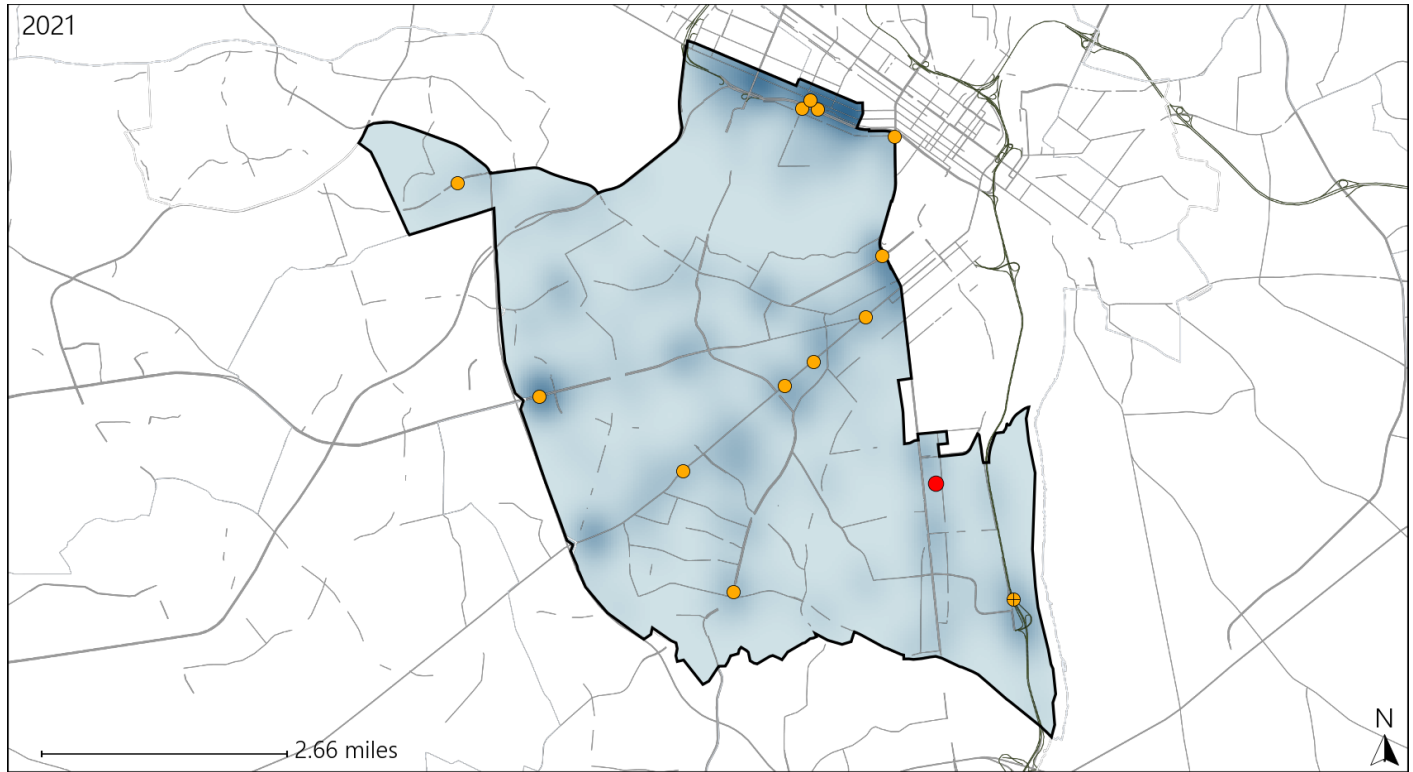
Available Crash Data - Calendar Year (CY)	CY 2018	CY 2019	CY 2020	CY 2021
Total Crashes	1732	1704	1641	1698
Fatal Crashes	10	6	11	12
Injury Crashes	541	563	508	468
Bicycle-Related Fatal Crashes	2	1	0	1
Percent of Bicycle-Related Fatal Crashes to Total Fatal Crashes	20%	17%	0%	8%
Bicycle-Related Injury Crashes	11	7	9	8
Percent of Bicycle-Related Injury Crashes to Total Injury Crashes	2%	1%	2%	2%



# Virginia House District 69 Distracted Driving Crash Statistics

Report Generated April, 2022

	Count	Highest Time Period(s)	Highest Day(s)	Highest Month(s)
<b>Fatal Crashes</b>	<b>1</b>	<b>9:00pm - 11:59pm</b>	<b>Friday</b>	<b>April</b>
<b>Resulting Fatalities</b>	<b>1</b>	<b>(100%)</b>	<b>(100%)</b>	<b>(100%)</b>
<b>Serious Injury Crashes</b>	<b>13</b>	<b>6:00pm - 8:59pm</b>	<b>Friday</b>	<b>August</b>
		<b>(31%)</b>	<b>(31%)</b>	<b>(23%)</b>



## House District 69 Distracted Driving-Related Crashes

Interstate Crashes

Non-interstate Crashes

● Fatal

● Fatal

● Serious Injury

● Serious Injury

The blue gradient represents the density of all distracted driving-related crashes.



Available Crash Data - Calendar Year (CY)	CY 2018	CY 2019	CY 2020	CY 2021
Total Crashes	1732	1704	1641	1698
Fatal Crashes	10	6	11	12
Injury Crashes	541	563	508	468
Distracted Driving-Related Fatal Crashes	1	2	1	1
Percent of Distracted Driving-Related Fatal Crashes to Total Fatal Crashes	10%	33%	9%	8%
Distracted Driving-Related Injury Crashes	87	91	89	87
Percent of Distracted Driving-Related Injury Crashes to Total Injury Crashes	16%	16%	18%	19%