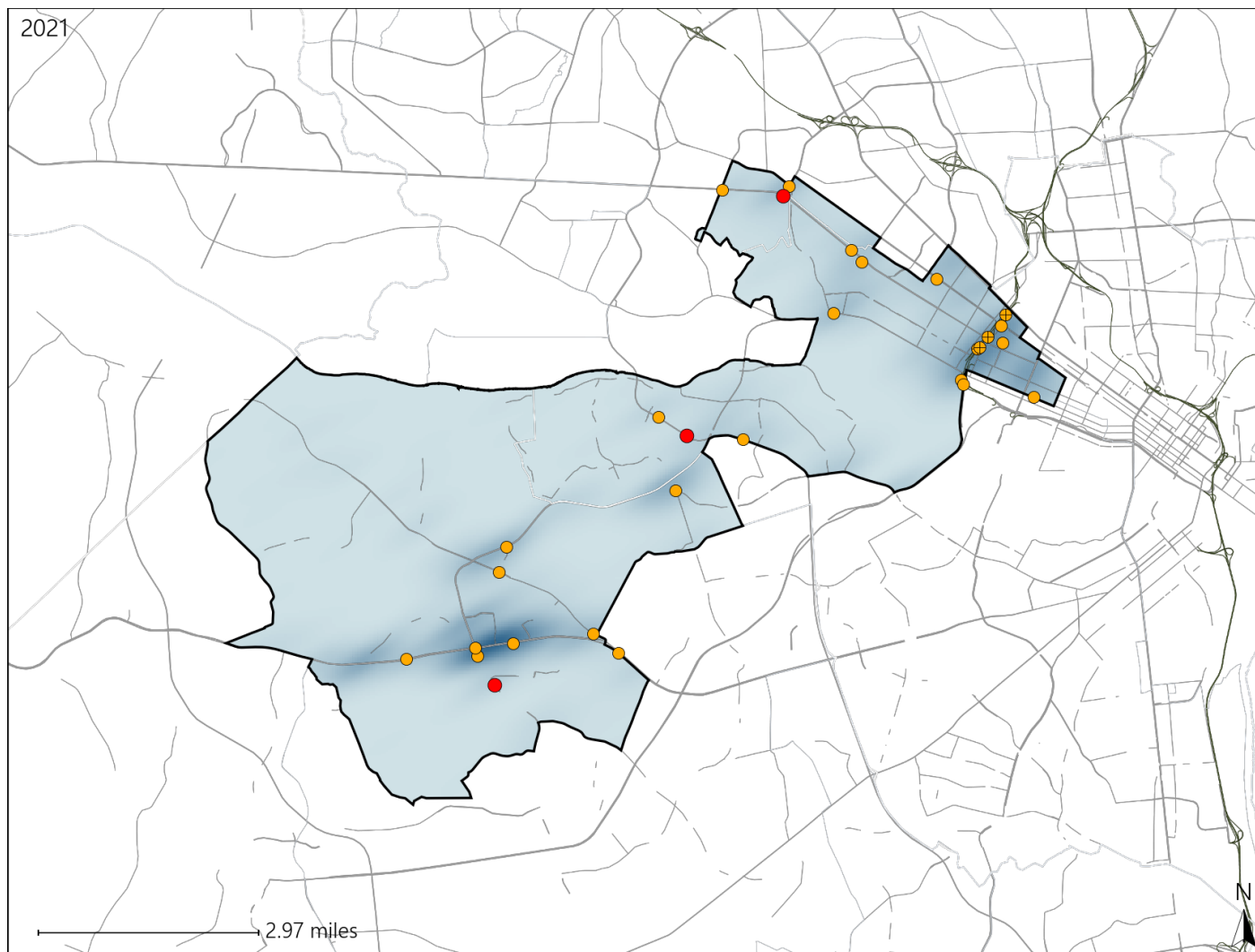


Virginia House District 68 Crash Statistics

Report Generated April, 2022

	Count	Highest Time Period(s)	Highest Day(s)	Highest Month(s)
Fatal Crashes	3	3:00pm - 5:59pm	Friday • Saturday	June • May
Resulting Fatalities	3	6:00pm - 8:59pm (66%)	(66%)	(66%)
Serious Injury Crashes	26	6:00pm - 8:59pm (23%)	Tuesday (23%)	May • November (38%)



House District 68 Crashes

Interstate Crashes

- Fatal
- Serious Injury

Non-interstate Crashes

- Fatal
- Serious Injury

The blue gradient represents the density of all crashes.

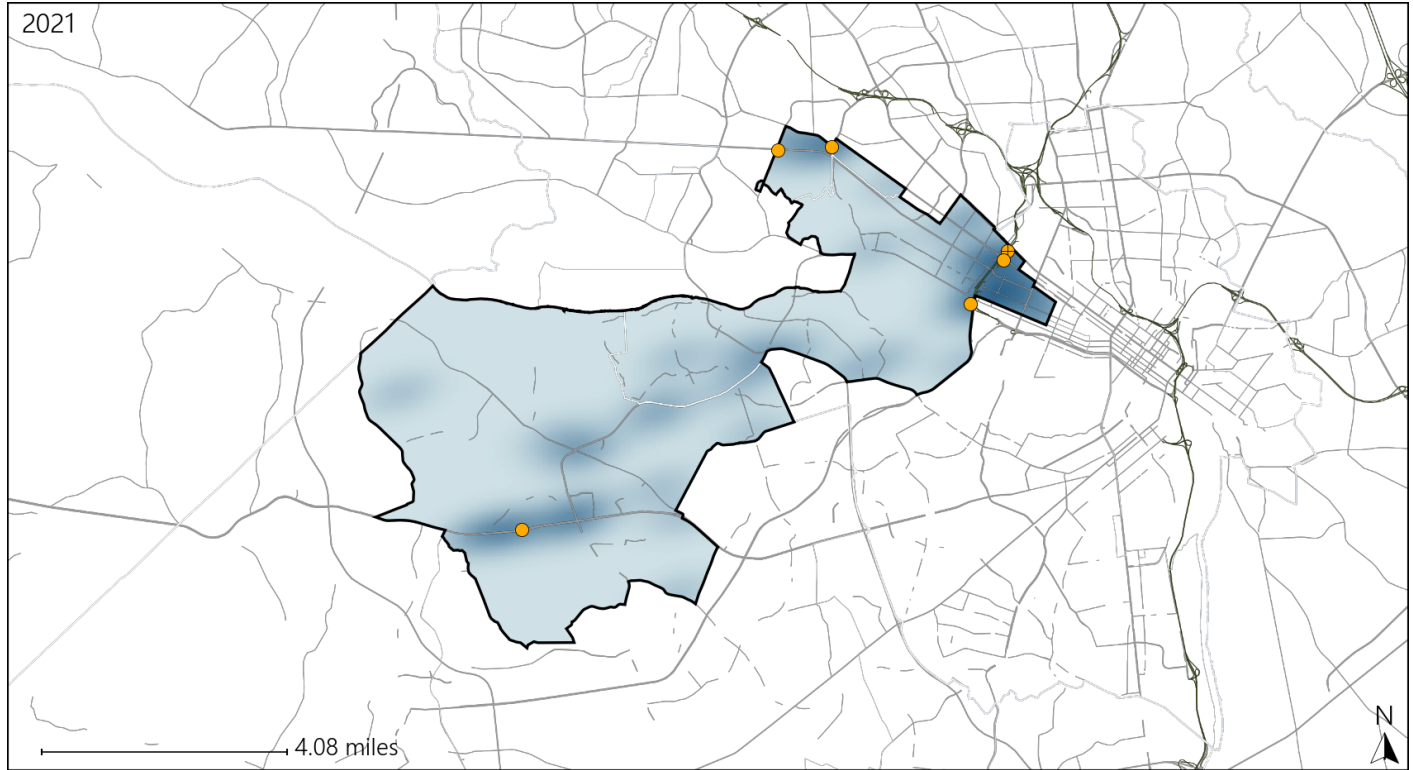


Available Crash Data - Calendar Year (CY)	CY 2018	CY 2019	CY 2020	CY 2021
Total Crashes	1516	1406	848	1150
Fatal Crashes	4	3	1	3
Injury Crashes	362	335	187	269

Virginia House District 68 Alcohol Crash Statistics

Report Generated April, 2022

	Count	Highest Time Period(s)	Highest Day(s)	Highest Month(s)
Fatal Crashes	0	-	-	-
Resulting Fatalities	0			
Serious Injury Crashes	6	9:00pm - 11:59pm (50%)	Tuesday (50%)	May • October (66%)



House District 68 Alcohol-Related Crashes

Interstate Crashes

Non-interstate Crashes

- Fatal
- Serious Injury

- Fatal
- Serious Injury

The blue gradient represents the density of all alcohol-related crashes.

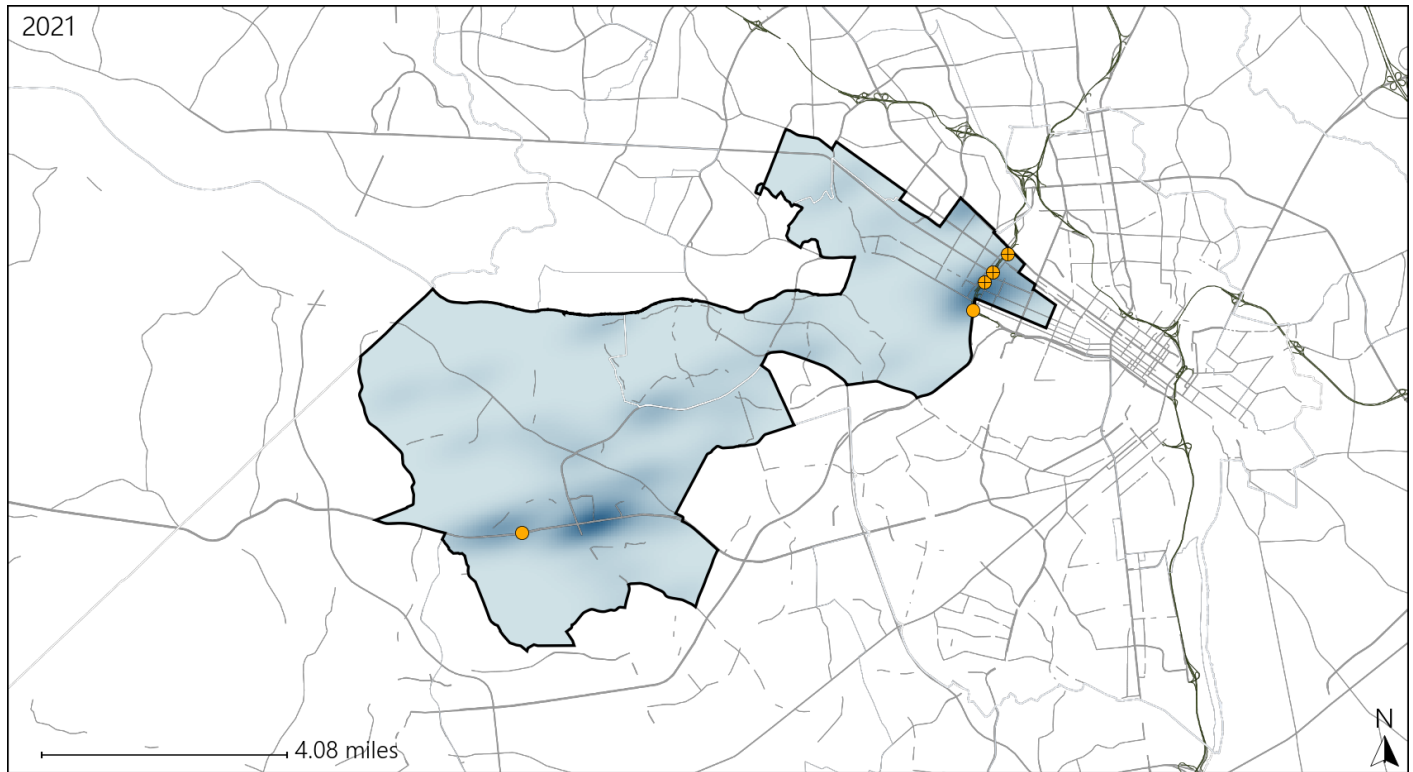


Available Crash Data - Calendar Year (CY)	CY 2018	CY 2019	CY 2020	CY 2021
Total Crashes	1516	1406	848	1150
Fatal Crashes	4	3	1	3
Injury Crashes	362	335	187	269
Alcohol-Related Fatal Crashes	1	1	1	0
Percent of Alcohol-Related Fatal Crashes to Total Fatal Crashes	25%	33%	100%	0%
Alcohol-Related Injury Crashes	25	14	10	17
Percent of Alcohol-Related Injury Crashes to Total Injury Crashes	7%	4%	5%	6%

Virginia House District 68 Speed Crash Statistics

Report Generated April, 2022

	Count	Highest Time Period(s)	Highest Day(s)	Highest Month(s)
Fatal Crashes	0	-	-	-
Resulting Fatalities	0			
Serious Injury Crashes	5	3:00pm - 5:59pm 6:00am - 8:59am (40%)	Tuesday (60%)	November (40%)



House District 68 Speed-Related Crashes

Interstate Crashes

- Fatal
- Serious Injury

Non-interstate Crashes

- Fatal
- Serious Injury

The blue gradient represents the density of all speed-related crashes.

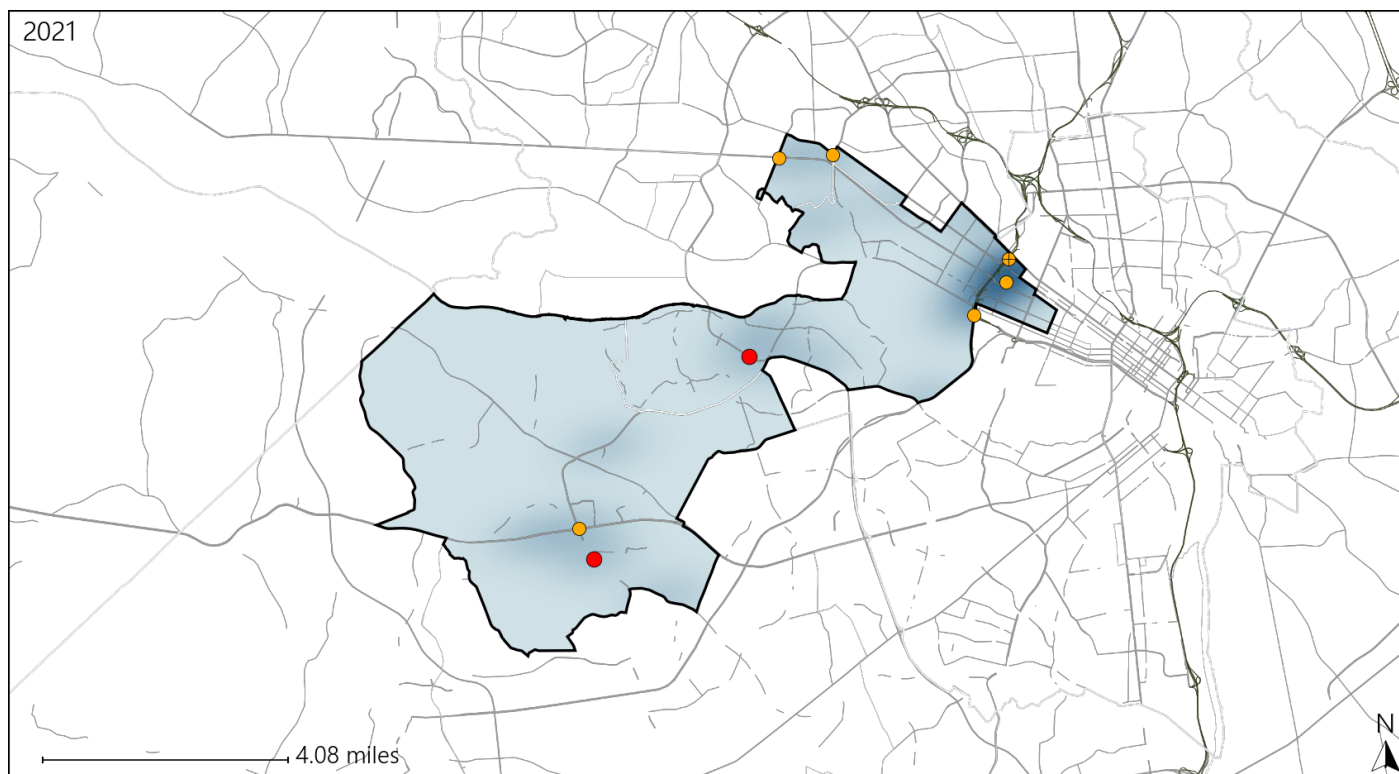


Available Crash Data - Calendar Year (CY)	CY 2018	CY 2019	CY 2020	CY 2021
Total Crashes	1516	1406	848	1150
Fatal Crashes	4	3	1	3
Injury Crashes	362	335	187	269
Speed-Related Fatal Crashes	0	1	1	0
Percent of Speed-Related Fatal Crashes to Total Fatal Crashes	0%	33%	100%	0%
Speed-Related Injury Crashes	29	31	23	21
Percent of Speed-Related Injury Crashes to Total Injury Crashes	8%	9%	12%	8%

Virginia House District 68 Unrestrained Crash Statistics

Report Generated April, 2022

	Count	Highest Time Period(s)	Highest Day(s)	Highest Month(s)
Fatal Crashes	2	3:00pm - 5:59pm	Friday • Saturday	June • May
Unrestrained Fatalities	2	9:00pm - 11:59pm (100%)	(100%)	(100%)
Serious Injury Crashes	6	6:00am - 8:59am 6:00pm - 8:59pm (66%)	Monday (33%)	May (33%)



House District 68 Unrestrained-Related Crashes

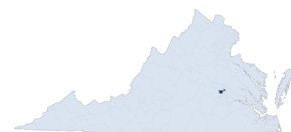
Interstate Crashes

- Fatal
- Serious Injury

Non-interstate Crashes

- Fatal
- Serious Injury

The blue gradient represents the density of all unrestrained-related crashes.

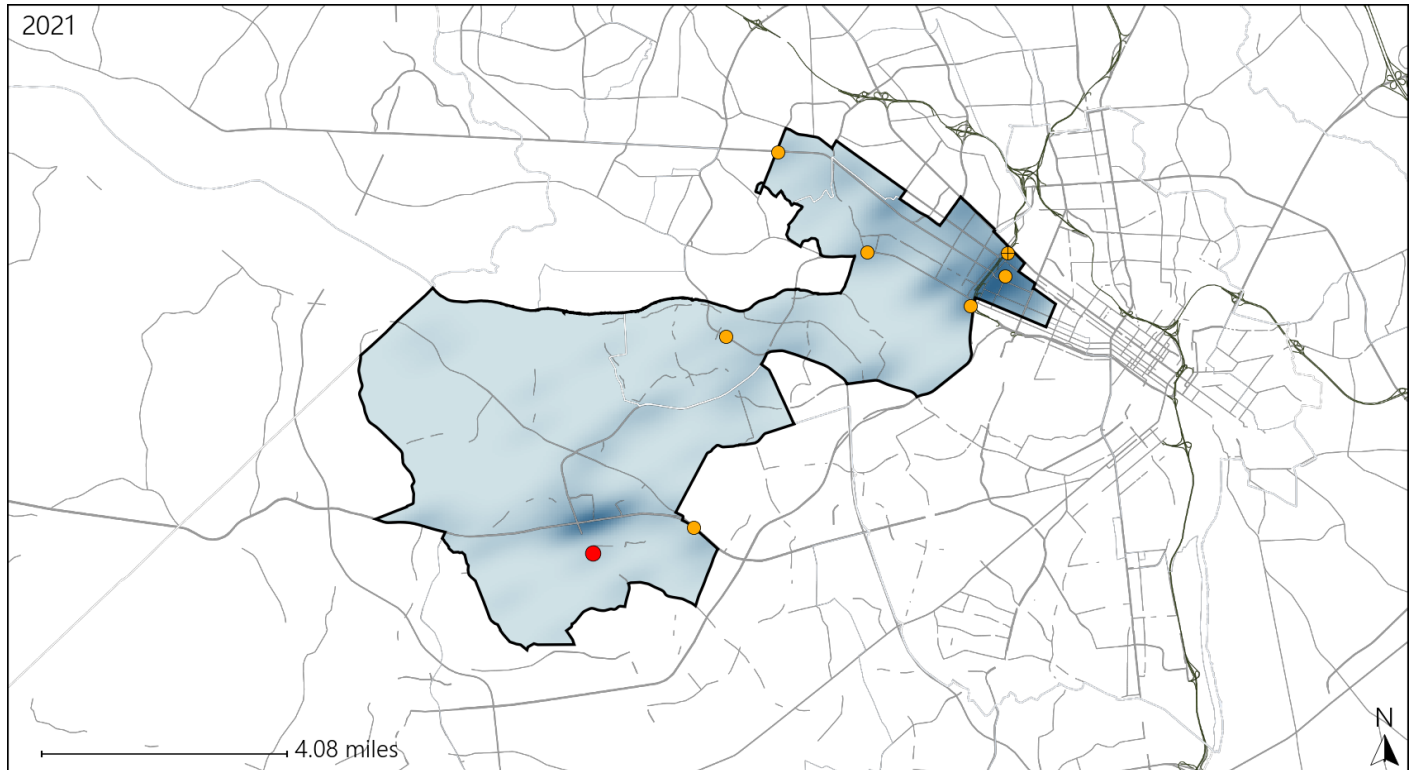


Available Crash Data - Calendar Year (CY)	CY 2018	CY 2019	CY 2020	CY 2021
Total Crashes	1516	1406	848	1150
Fatalities	4	3	1	3
Injuries	591	533	318	468
Unrestrained Fatalities	1	2	1	2
Percent of Unrestrained Fatalities to Total Fatalities	25%	67%	100%	67%
Unrestrained Injuries	19	17	9	22
Percent of Unrestrained Injuries to Total Injuries	3%	3%	3%	5%

Virginia House District 68 Distracted Driving Crash Statistics

Report Generated April, 2022

	Count	Highest Time Period(s)	Highest Day(s)	Highest Month(s)
Fatal Crashes	1	9:00pm - 11:59pm	Saturday	June
Resulting Fatalities	1	(100%)	(100%)	(100%)
Serious Injury Crashes	7	6:00pm - 8:59pm	Tuesday	October • September
		(57%)	(29%)	(58%)



House District 68 Distracted Driving-Related Crashes

Interstate Crashes

Non-interstate Crashes

- Fatal
- Serious Injury

- Fatal
- Serious Injury

The blue gradient represents the density of all distracted driving-related crashes.



Available Crash Data - Calendar Year (CY)	CY 2018	CY 2019	CY 2020	CY 2021
Total Crashes	1516	1406	848	1150
Fatal Crashes	4	3	1	3
Injury Crashes	362	335	187	269
Distracted Driving-Related Fatal Crashes	0	1	0	1
Percent of Distracted Driving-Related Fatal Crashes to Total Fatal Crashes	0%	33%	0%	33%
Distracted Driving-Related Injury Crashes	62	54	31	48
Percent of Distracted Driving-Related Injury Crashes to Total Injury Crashes	17%	16%	17%	18%