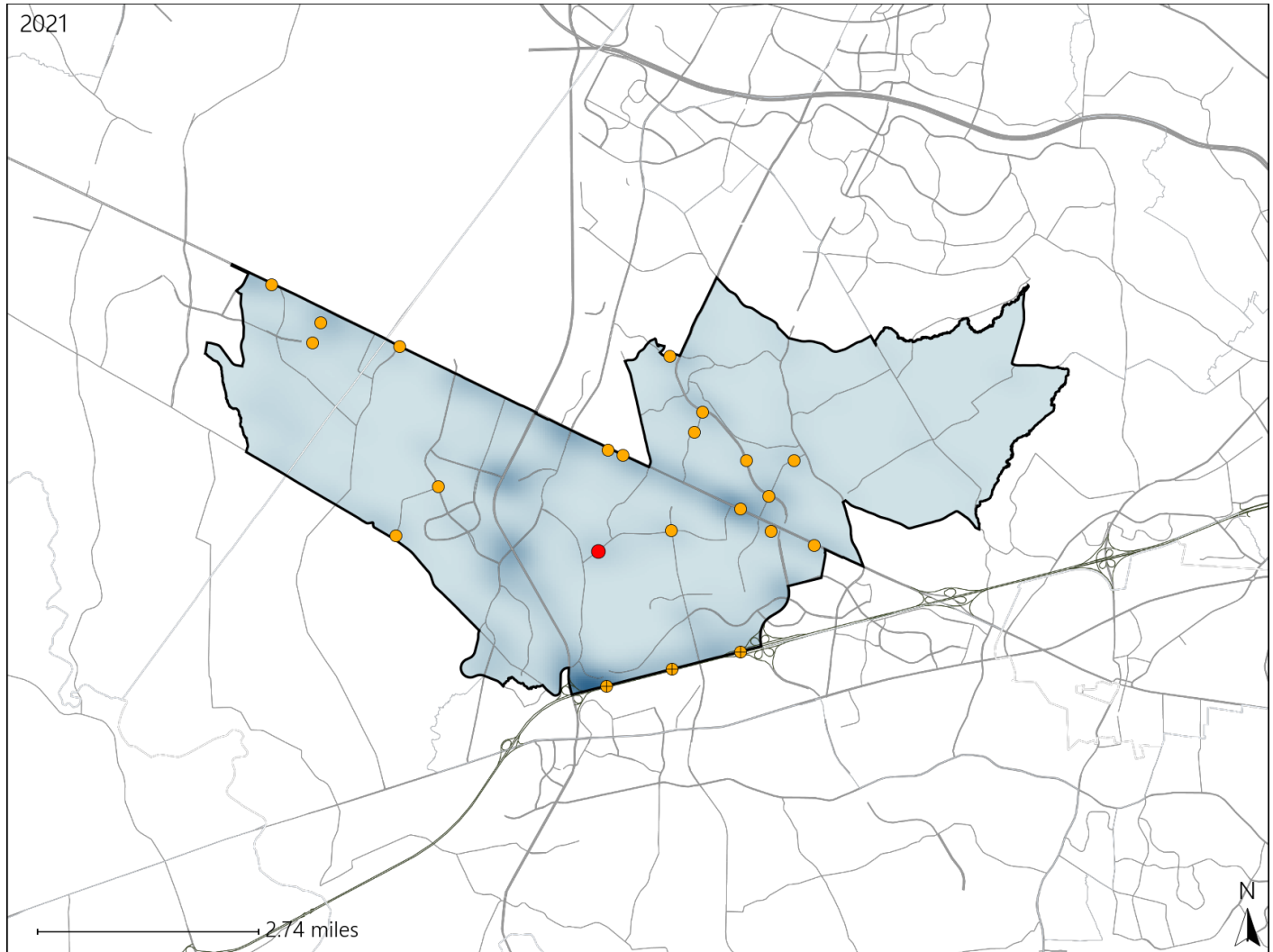


# Virginia House District 67 Crash Statistics

Report Generated April, 2022

	Count	Highest Time Period(s)	Highest Day(s)	Highest Month(s)
<b>Fatal Crashes</b>	<b>1</b>	<b>3:00am - 5:59am</b>	<b>Sunday</b>	<b>December</b>
<b>Resulting Fatalities</b>	<b>1</b>	<b>(100%)</b>	<b>(100%)</b>	<b>(100%)</b>
<b>Serious Injury Crashes</b>	<b>21</b>	<b>3:00pm - 5:59pm</b>	<b>Friday • Sunday</b>	<b>April • August</b>
		<b>(29%)</b>	<b>(48%)</b>	<b>(28%)</b>



## House District 67 Crashes

Interstate Crashes

- Fatal
- Serious Injury

Non-interstate Crashes

- Fatal
- Serious Injury

The blue gradient represents the density of all crashes.



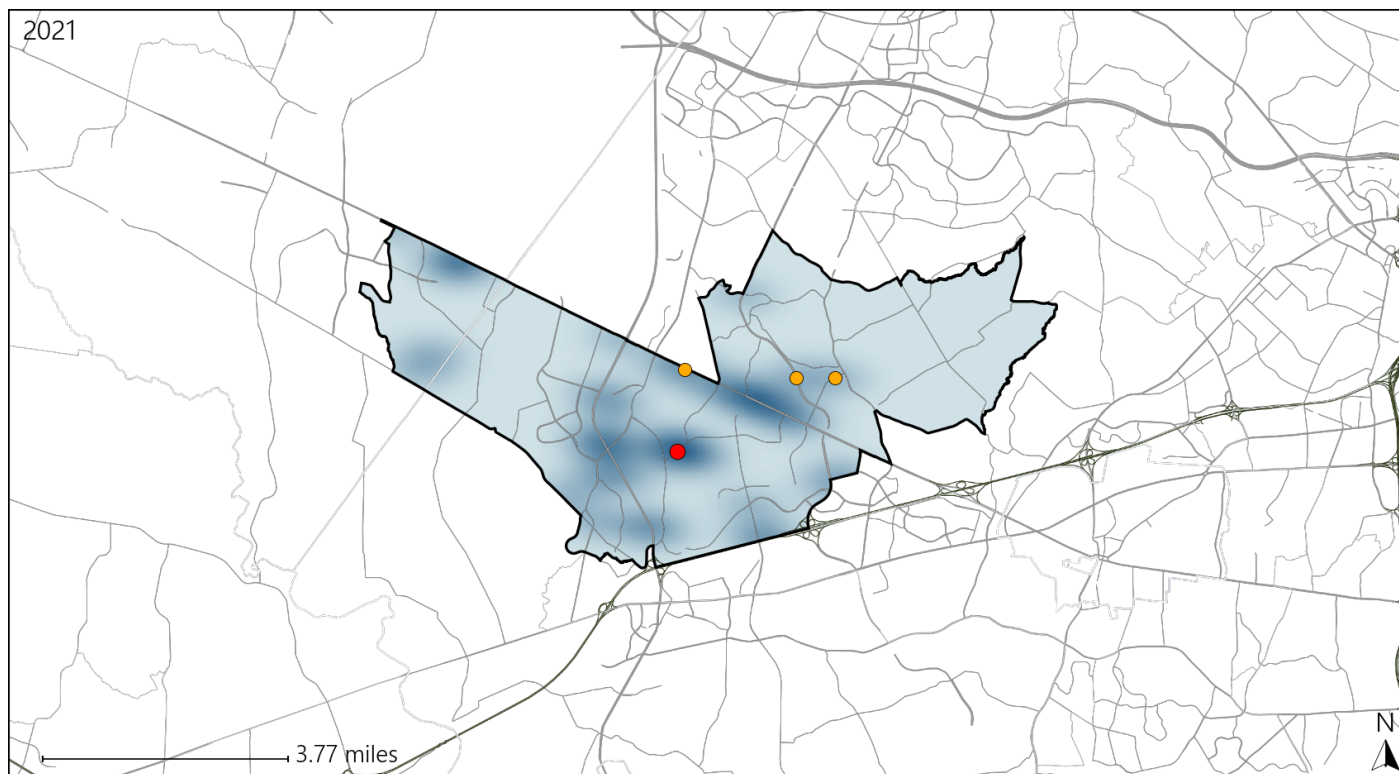
Available Crash Data - Calendar Year (CY)	CY 2018	CY 2019	CY 2020	CY 2021
Total Crashes	881	916	560	635
Fatal Crashes	2	4	1	1
Injury Crashes	244	273	140	187

Report of Crashes for January 1<sup>st</sup> - December 31<sup>st</sup>, 2021

# Virginia House District 67 Alcohol Crash Statistics

Report Generated April, 2022

	Count	Highest Time Period(s)	Highest Day(s)	Highest Month(s)
<b>Fatal Crashes</b>	<b>1</b>	<b>3:00am - 5:59am</b>	<b>Sunday</b>	<b>December</b>
<b>Resulting Fatalities</b>	<b>1</b>	<b>(100%)</b>	<b>(100%)</b>	<b>(100%)</b>
<b>Serious Injury Crashes</b>	<b>3</b>	<b>3:00pm - 5:59pm Midnight - 2:59am</b>	<b>Friday • Saturday</b>	<b>August • July</b>
		<b>(66%)</b>	<b>(66%)</b>	<b>(66%)</b>



## House District 67 Alcohol-Related Crashes

Interstate Crashes

Non-interstate Crashes

● Fatal

● Fatal

⊕ Serious Injury

⊕ Serious Injury

The blue gradient represents the density of all alcohol-related crashes.



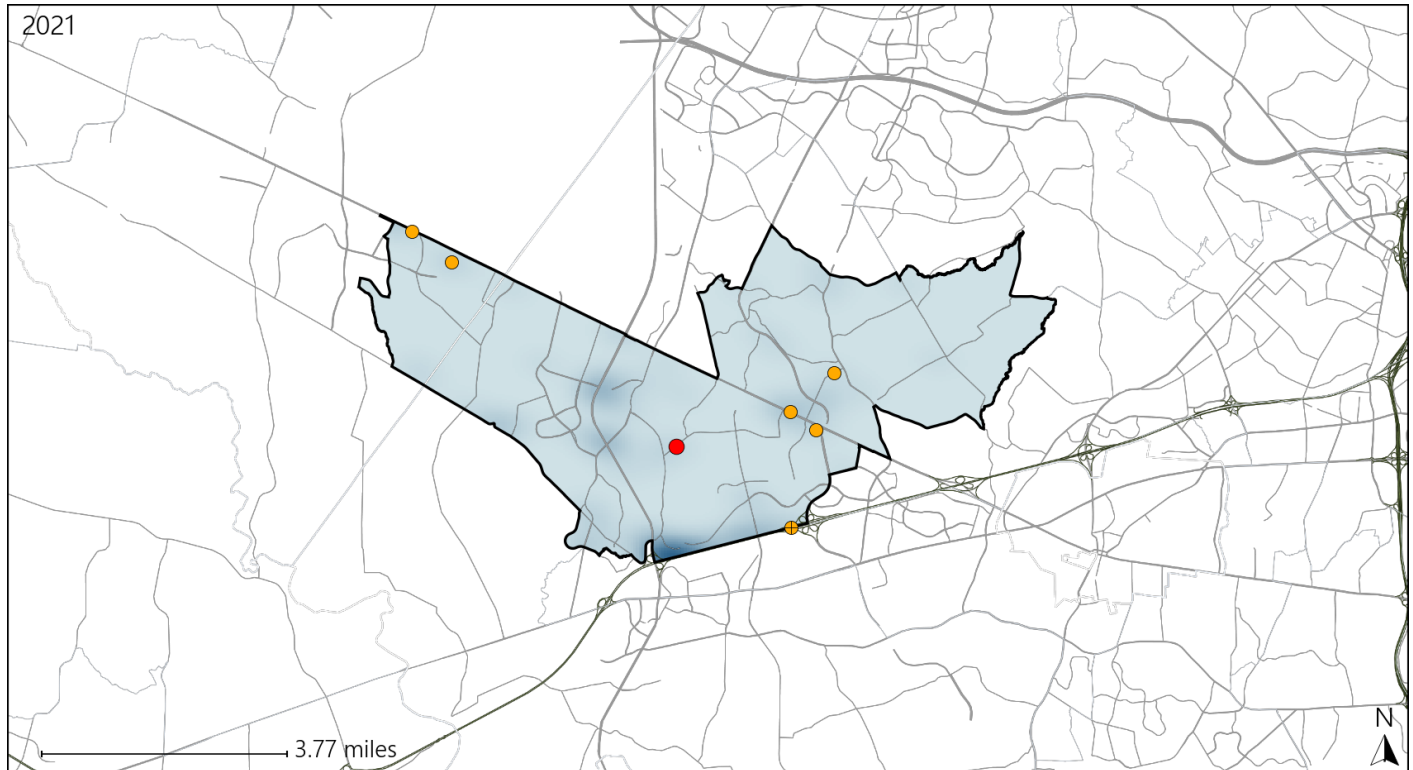
Available Crash Data - Calendar Year (CY)	CY 2018	CY 2019	CY 2020	CY 2021
Total Crashes	881	916	560	635
Fatal Crashes	2	4	1	1
Injury Crashes	244	273	140	187
Alcohol-Related Fatal Crashes	0	3	1	1
Percent of Alcohol-Related Fatal Crashes to Total Fatal Crashes	0%	75%	100%	100%
Alcohol-Related Injury Crashes	9	13	9	14
Percent of Alcohol-Related Injury Crashes to Total Injury Crashes	4%	5%	6%	7%

Report of Crashes for January 1<sup>st</sup> - December 31<sup>st</sup>, 2021

# Virginia House District 67 Speed Crash Statistics

Report Generated April, 2022

	Count	Highest Time Period(s)	Highest Day(s)	Highest Month(s)
<b>Fatal Crashes</b>	<b>1</b>	<b>3:00am - 5:59am</b>	<b>Sunday</b>	<b>December</b>
<b>Resulting Fatalities</b>	<b>1</b>	<b>(100%)</b>	<b>(100%)</b>	<b>(100%)</b>
<b>Serious Injury Crashes</b>	<b>6</b>	<b>3:00pm - 5:59pm</b>	<b>Friday</b>	<b>April</b>
		<b>(50%)</b>	<b>(67%)</b>	<b>(33%)</b>



## House District 67 Speed-Related Crashes

Interstate Crashes

Non-interstate Crashes

- Fatal
- Serious Injury

- Fatal
- Serious Injury

The blue gradient represents the density of all speed-related crashes.



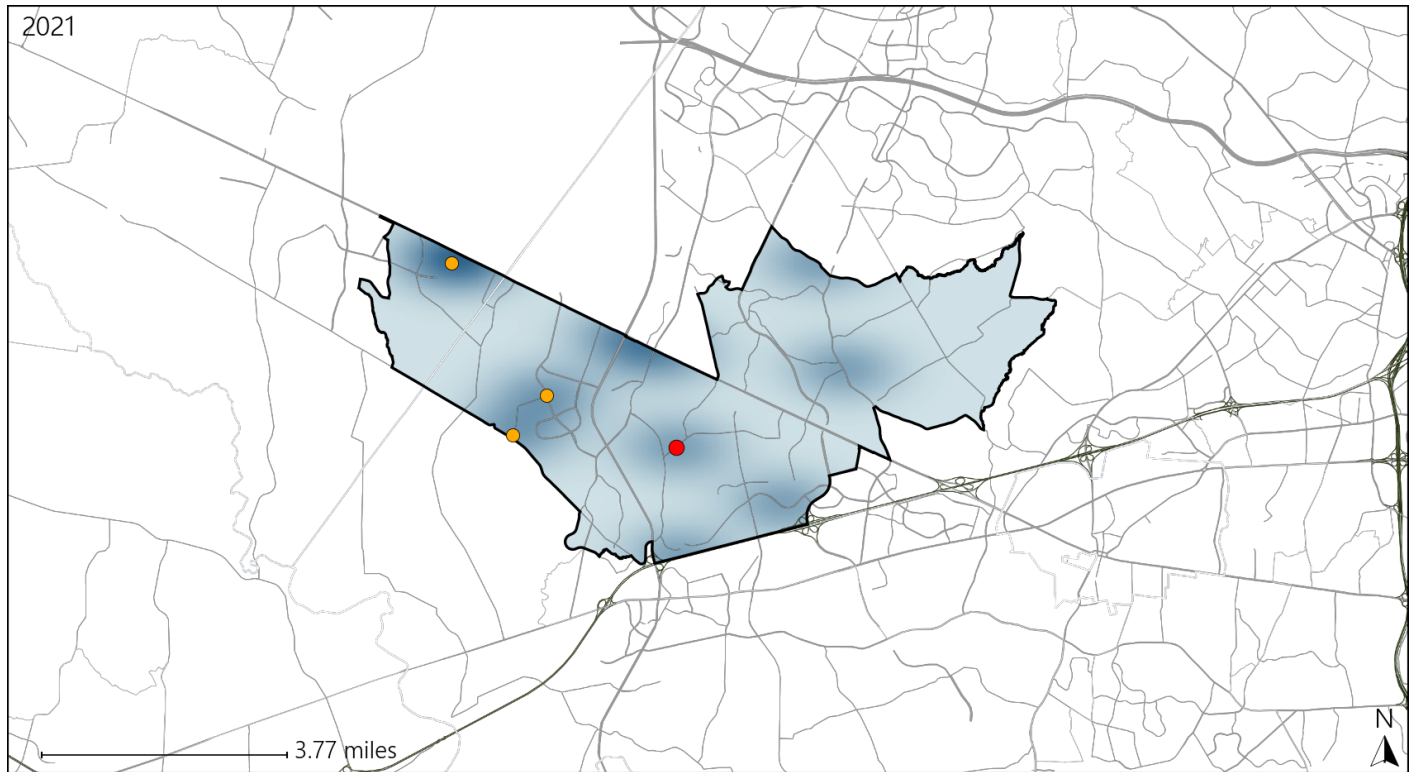
Available Crash Data - Calendar Year (CY)	CY 2018	CY 2019	CY 2020	CY 2021
Total Crashes	881	916	560	635
Fatal Crashes	2	4	1	1
Injury Crashes	244	273	140	187
Speed-Related Fatal Crashes	1	2	1	1
Percent of Speed-Related Fatal Crashes to Total Fatal Crashes	50%	50%	100%	100%
Speed-Related Injury Crashes	41	29	18	42
Percent of Speed-Related Injury Crashes to Total Injury Crashes	17%	11%	13%	22%

Report of Crashes for January 1<sup>st</sup> - December 31<sup>st</sup>, 2021

# Virginia House District 67 Unrestrained Crash Statistics

Report Generated April, 2022

	Count	Highest Time Period(s)	Highest Day(s)	Highest Month(s)
<b>Fatal Crashes</b>	<b>1</b>	<b>3:00am - 5:59am</b>	<b>Sunday</b>	<b>December</b>
<b>Unrestrained Fatalities</b>	<b>1</b>	<b>(100%)</b>	<b>(100%)</b>	<b>(100%)</b>
<b>Serious Injury Crashes</b>	<b>3</b>	<b>3:00am - 5:59am 9:00am - 11:59am</b>	<b>Monday * Sunday</b>	<b>April * February</b>
		<b>(66%)</b>	<b>(66%)</b>	<b>(66%)</b>



## House District 67 Unrestrained-Related Crashes

Interstate Crashes

Non-interstate Crashes

● Fatal

● Fatal

⊕ Serious Injury

⊕ Serious Injury

The blue gradient represents the density of all unrestrained-related crashes.

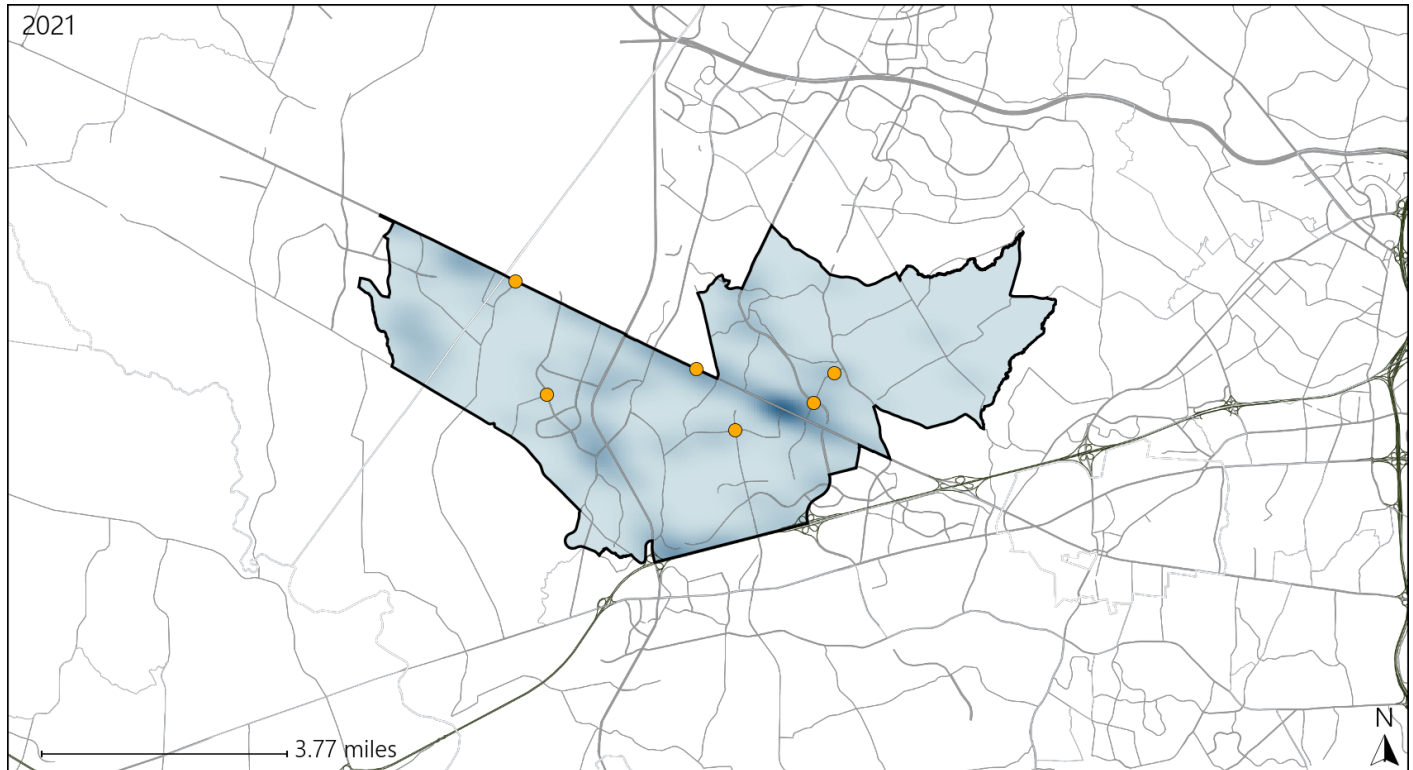


Available Crash Data - Calendar Year (CY)	CY 2018	CY 2019	CY 2020	CY 2021
Total Crashes	881	916	560	635
Fatalities	2	4	1	1
Injuries	376	421	215	316
Unrestrained Fatalities	0	0	0	1
Percent of Unrestrained Fatalities to Total Fatalities	0%	0%	0%	100%
Unrestrained Injuries	12	3	5	15
Percent of Unrestrained Injuries to Total Injuries	3%	1%	2%	5%

# Virginia House District 67 Distracted Driving Crash Statistics

Report Generated April, 2022

	Count	Highest Time Period(s)	Highest Day(s)	Highest Month(s)
<b>Fatal Crashes</b>	<b>0</b>	-	-	-
<b>Resulting Fatalities</b>	<b>0</b>	-	-	-
<b>Serious Injury Crashes</b>	<b>6</b>	<b>3:00pm - 5:59pm</b> (50%)	<b>Sunday</b> (33%)	<b>April - August</b> (34%)



## House District 67 Distracted Driving-Related Crashes

Interstate Crashes

Non-interstate Crashes

- Fatal
- Serious Injury

- Fatal
- Serious Injury

The blue gradient represents the density of all distracted driving-related crashes.



Available Crash Data - Calendar Year (CY)	CY 2018	CY 2019	CY 2020	CY 2021
Total Crashes	881	916	560	635
Fatal Crashes	2	4	1	1
Injury Crashes	244	273	140	187
Distracted Driving-Related Fatal Crashes	1	1	0	0
Percent of Distracted Driving-Related Fatal Crashes to Total Fatal Crashes	50%	25%	0%	0%
Distracted Driving-Related Injury Crashes	54	69	34	41
Percent of Distracted Driving-Related Injury Crashes to Total Injury Crashes	22%	25%	24%	22%