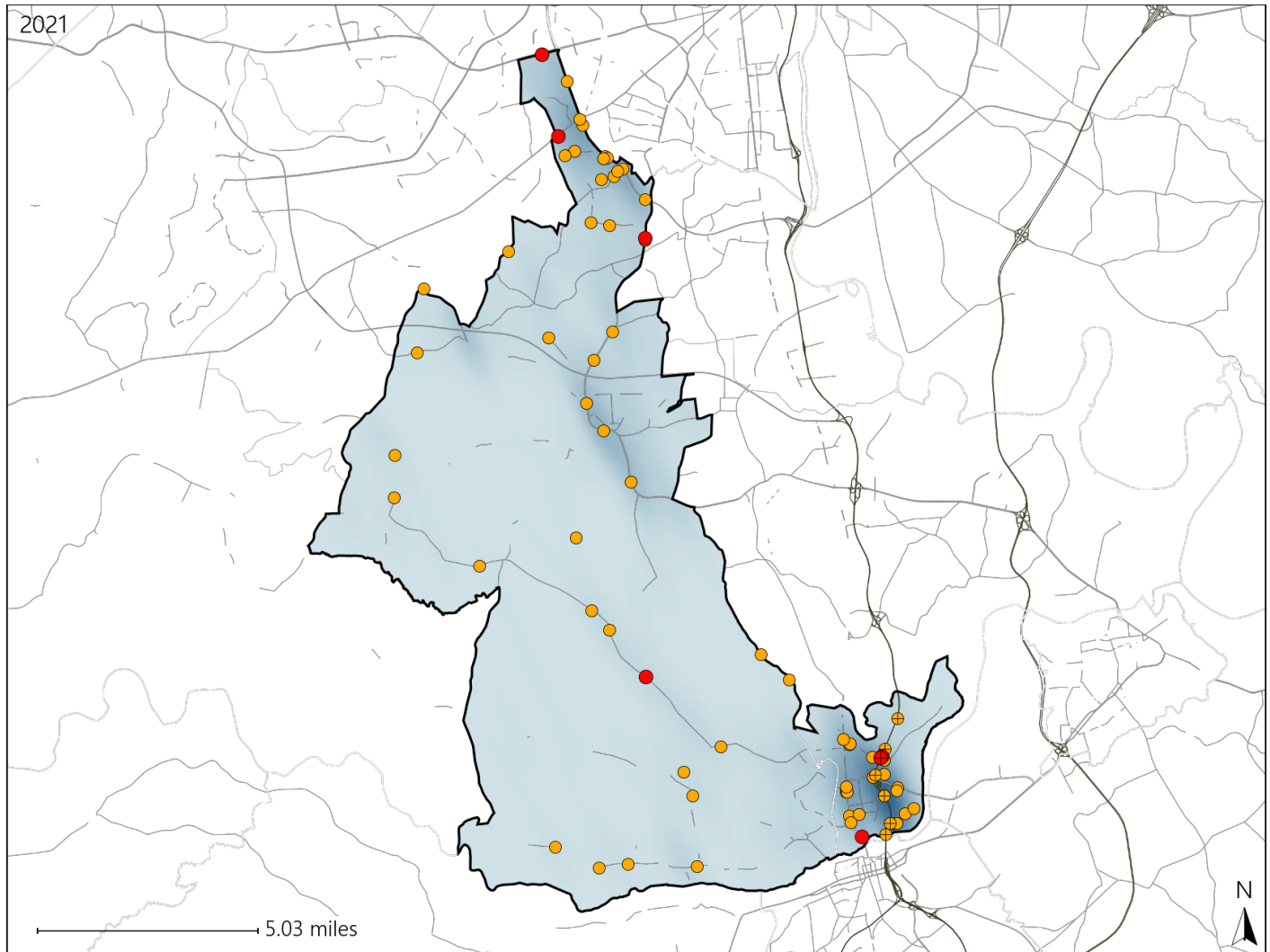


Virginia House District 66 Crash Statistics

Report Generated April, 2022

	Count	Highest Time Period(s)	Highest Day(s)	Highest Month(s)
Fatal Crashes	7	6:00am - 8:59am	Thursday	November
Resulting Fatalities	7	6:00pm - 8:59pm (58%)	(29%)	(29%)
Serious Injury Crashes	66	3:00pm - 5:59pm (27%)	Thursday (21%)	December (15%)



House District 66 Crashes

Interstate Crashes

- Fatal
- Serious Injury

Non-interstate Crashes

- Fatal
- Serious Injury

The blue gradient represents the density of all crashes.

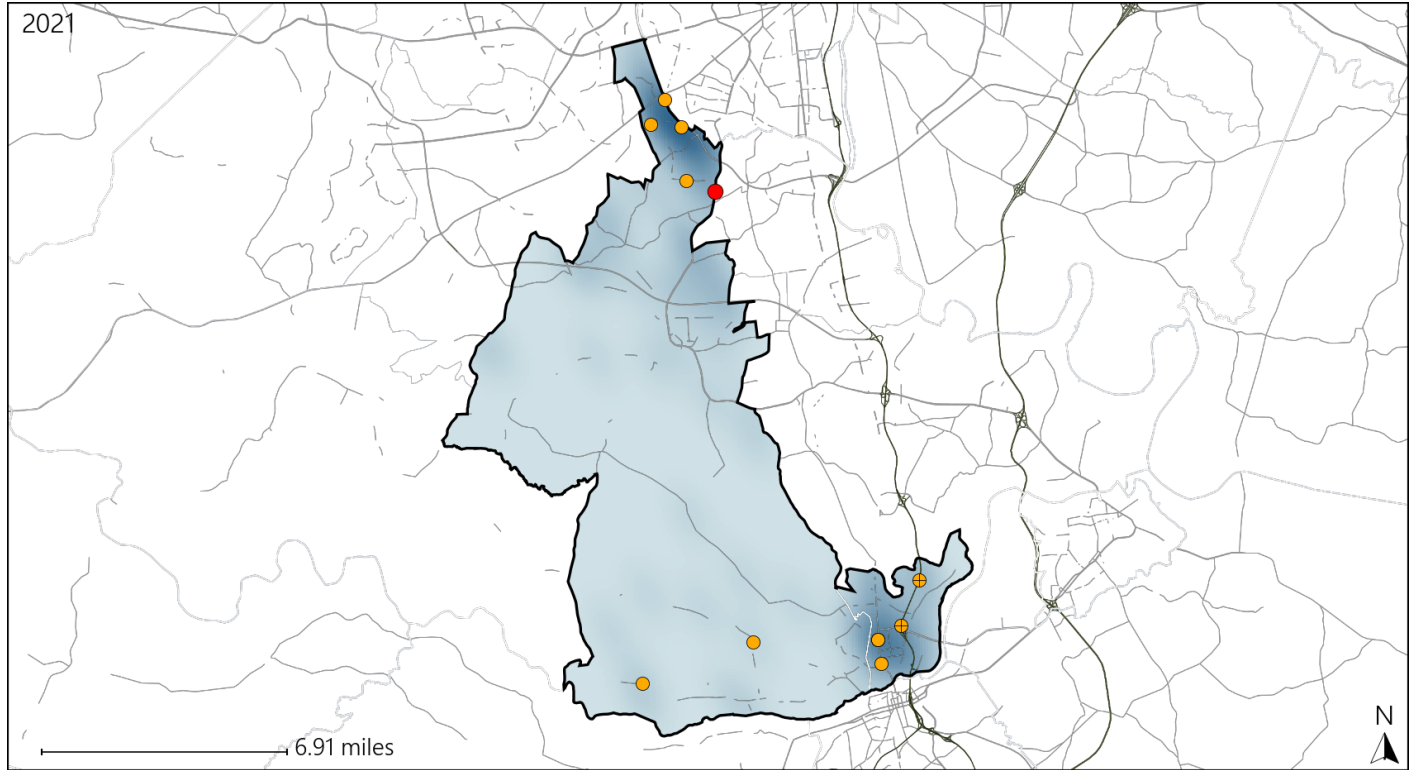


Available Crash Data - Calendar Year (CY)	CY 2018	CY 2019	CY 2020	CY 2021
Total Crashes	1440	1331	1167	1207
Fatal Crashes	6	5	3	7
Injury Crashes	425	397	317	363

Virginia House District 66 Alcohol Crash Statistics

Report Generated April, 2022

	Count	Highest Time Period(s)	Highest Day(s)	Highest Month(s)
Fatal Crashes	1	6:00am - 8:59am	Thursday	November
Resulting Fatalities	1	(100%)	(100%)	(100%)
Serious Injury Crashes	11	Midnight - 2:59am	Monday - Saturday	April
		(55%)	(54%)	(27%)



House District 66 Alcohol-Related Crashes

Interstate Crashes

Non-interstate Crashes

- Fatal
- Serious Injury

- Fatal
- Serious Injury

The blue gradient represents the density of all alcohol-related crashes.



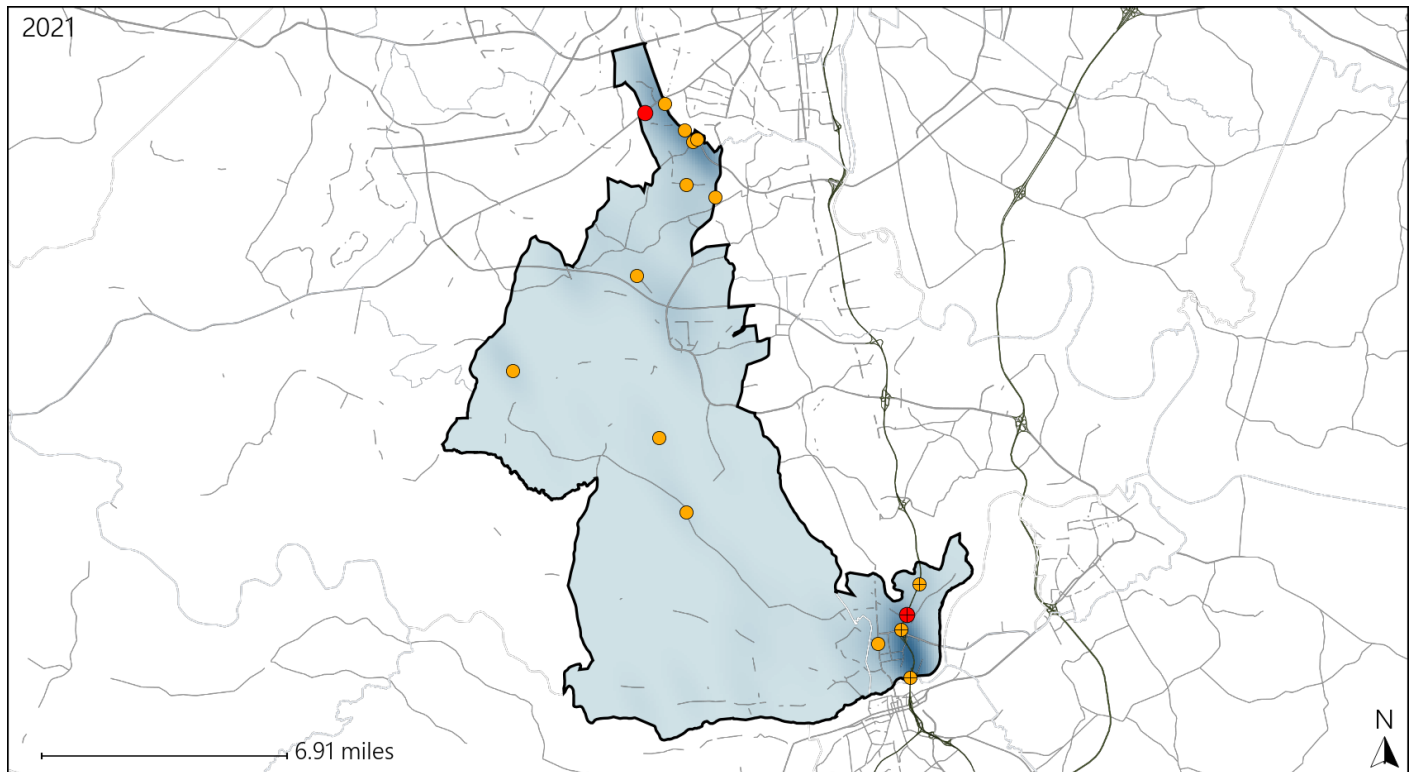
Available Crash Data - Calendar Year (CY)	CY 2018	CY 2019	CY 2020	CY 2021
Total Crashes	1440	1331	1167	1207
Fatal Crashes	6	5	3	7
Injury Crashes	425	397	317	363
Alcohol-Related Fatal Crashes	1	1	1	1
Percent of Alcohol-Related Fatal Crashes to Total Fatal Crashes	17%	20%	33%	14%
Alcohol-Related Injury Crashes	31	30	33	43
Percent of Alcohol-Related Injury Crashes to Total Injury Crashes	7%	8%	10%	12%

Report of Crashes for January 1st - December 31st, 2021

Virginia House District 66 Speed Crash Statistics

Report Generated April, 2022

	Count	Highest Time Period(s)	Highest Day(s)	Highest Month(s)
Fatal Crashes	2	3:00pm - 5:59pm	Saturday • Thursday	November • September
Resulting Fatalities	2	6:00pm - 8:59pm (100%)	(100%)	(100%)
Serious Injury Crashes	14	6:00am - 8:59am 9:00am - 11:59am (42%)	Thursday (43%)	June (21%)



House District 66 Speed-Related Crashes

Interstate Crashes

Non-interstate Crashes

● Fatal

● Fatal

⊕ Serious Injury

⊕ Serious Injury

The blue gradient represents the density of all speed-related crashes.

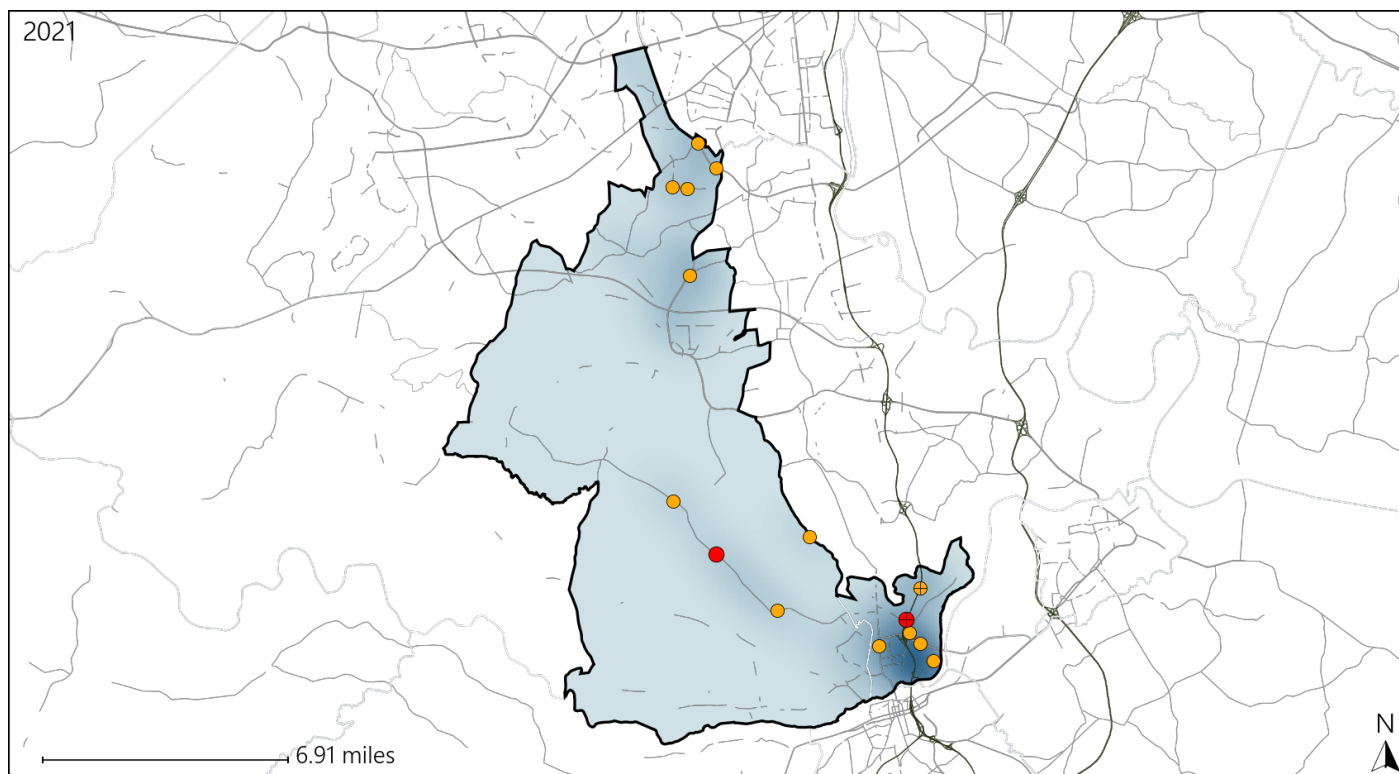


Available Crash Data - Calendar Year (CY)	CY 2018	CY 2019	CY 2020	CY 2021
Total Crashes	1440	1331	1167	1207
Fatal Crashes	6	5	3	7
Injury Crashes	425	397	317	363
Speed-Related Fatal Crashes	3	2	2	2
Percent of Speed-Related Fatal Crashes to Total Fatal Crashes	50%	40%	67%	29%
Speed-Related Injury Crashes	70	85	63	78
Percent of Speed-Related Injury Crashes to Total Injury Crashes	16%	21%	20%	21%

Virginia House District 66 Unrestrained Crash Statistics

Report Generated April, 2022

	Count	Highest Time Period(s)	Highest Day(s)	Highest Month(s)
Fatal Crashes	2	6:00am - 8:59am	Friday • Wednesday	August • December
Unrestrained Fatalities	2	6:00pm - 8:59pm (100%)	(100%)	(100%)
Serious Injury Crashes	13	6:00am - 8:59am 6:00pm - 8:59pm (46%)	Friday • Saturday (62%)	July (23%)



House District 66 Unrestrained-Related Crashes

Interstate Crashes

Non-interstate Crashes

● Fatal

● Fatal

⊕ Serious Injury

⊕ Serious Injury

The blue gradient represents the density of all unrestrained-related crashes.

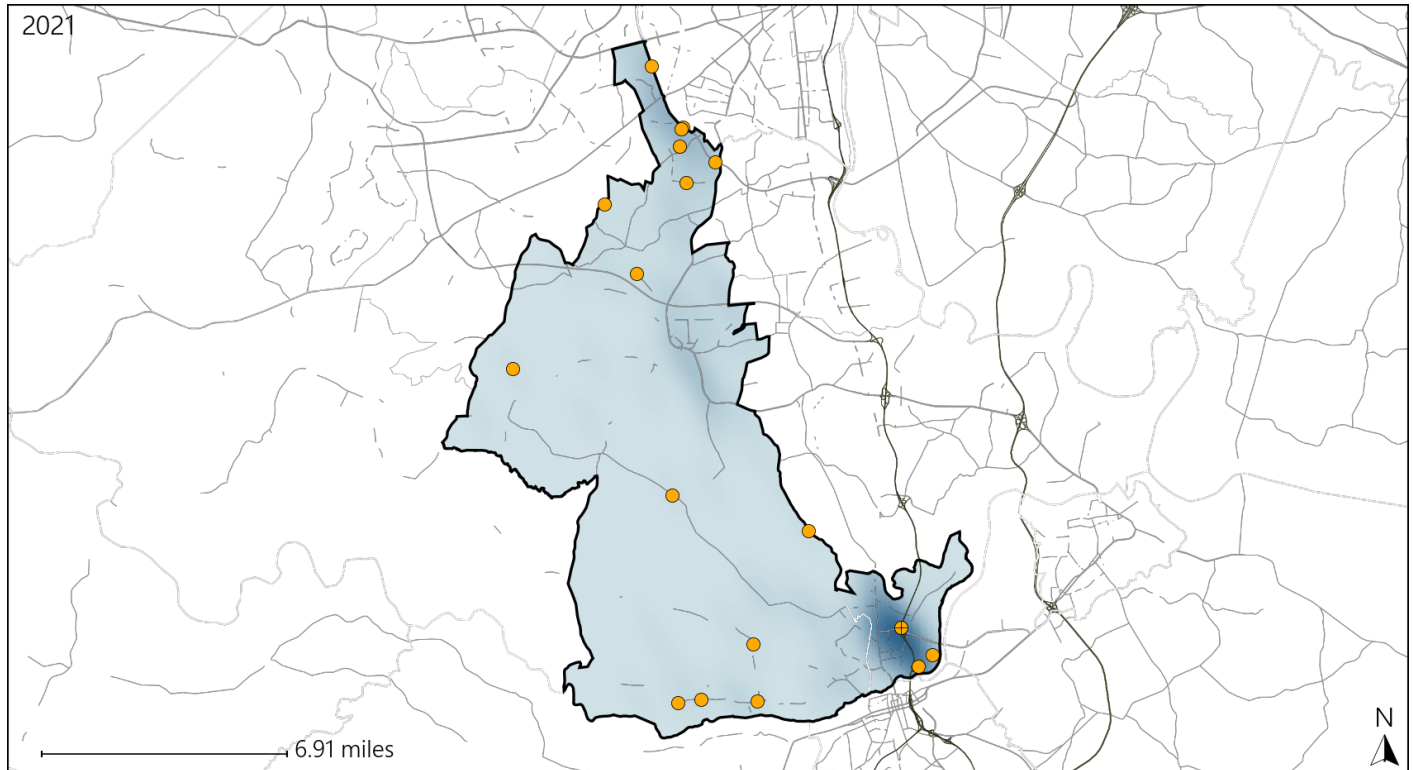


Available Crash Data - Calendar Year (CY)	CY 2018	CY 2019	CY 2020	CY 2021
Total Crashes	1440	1331	1167	1207
Fatalities	6	5	3	7
Injuries	673	673	516	562
Unrestrained Fatalities	1	2	0	2
Percent of Unrestrained Fatalities to Total Fatalities	17%	40%	0%	29%
Unrestrained Injuries	41	47	49	47
Percent of Unrestrained Injuries to Total Injuries	6%	7%	9%	8%

Virginia House District 66 Distracted Driving Crash Statistics

Report Generated April, 2022

	Count	Highest Time Period(s)	Highest Day(s)	Highest Month(s)
Fatal Crashes	0	-	-	-
Resulting Fatalities	0	-	-	-
Serious Injury Crashes	18	3:00pm - 5:59pm (39%)	Saturday (28%)	January • June (34%)



House District 66 Distracted Driving-Related Crashes

Interstate Crashes

Non-interstate Crashes

- Fatal
- Serious Injury

- Fatal
- Serious Injury

The blue gradient represents the density of all distracted driving-related crashes.



Available Crash Data - Calendar Year (CY)	CY 2018	CY 2019	CY 2020	CY 2021
Total Crashes	1440	1331	1167	1207
Fatal Crashes	6	5	3	7
Injury Crashes	425	397	317	363
Distracted Driving-Related Fatal Crashes	1	2	3	0
Percent of Distracted Driving-Related Fatal Crashes to Total Fatal Crashes	17%	40%	100%	0%
Distracted Driving-Related Injury Crashes	87	71	63	76
Percent of Distracted Driving-Related Injury Crashes to Total Injury Crashes	20%	18%	20%	21%