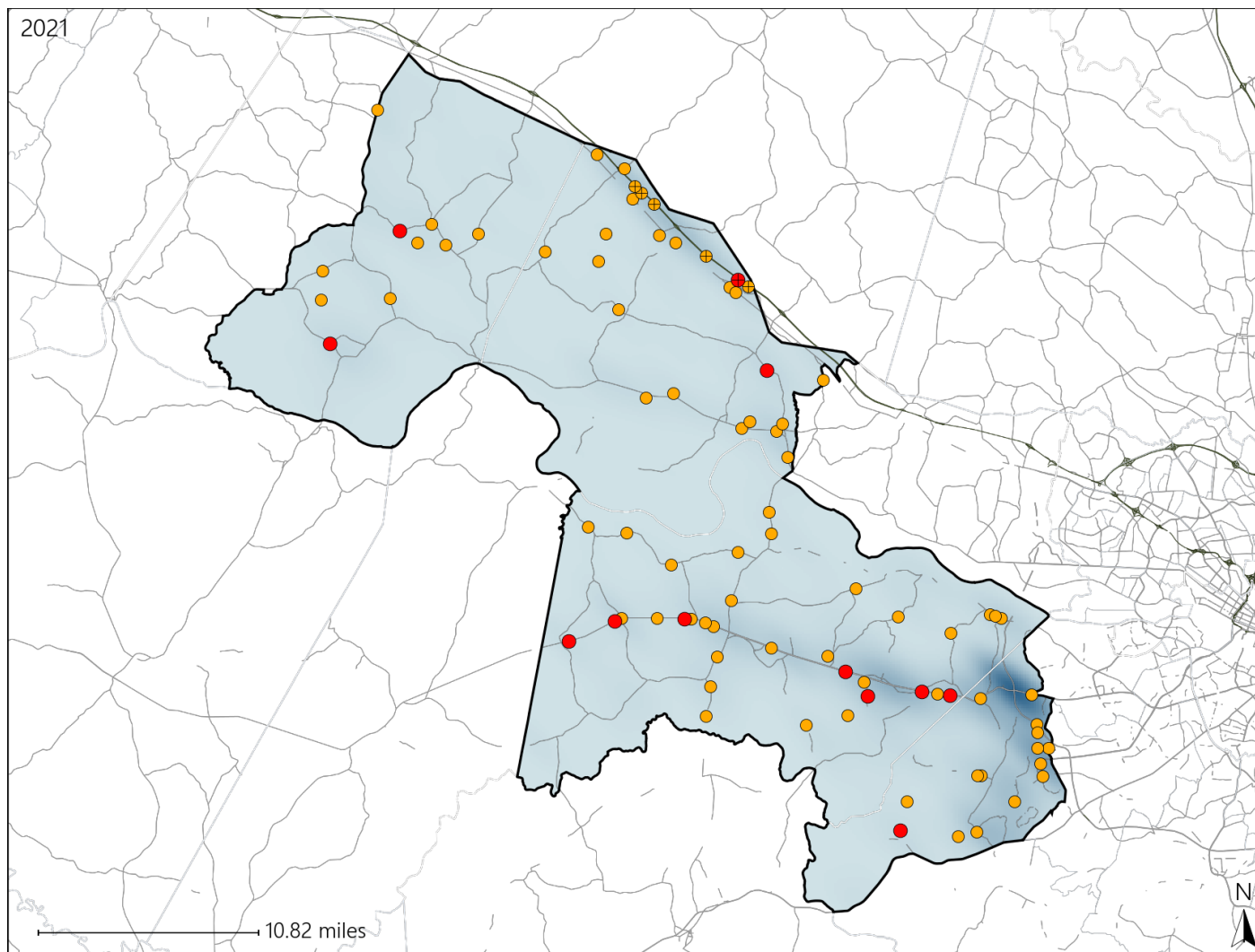


Report of Crashes for January 1st - December 31st, 2021

Virginia House District 65 Crash Statistics

Report Generated April, 2022

	Count	Highest Time Period(s)	Highest Day(s)	Highest Month(s)
Fatal Crashes	12	6:00pm - 8:59pm	Thursday • Wednesday	August
Resulting Fatalities	13	9:00pm - 11:59pm (50%)	(50%)	(25%)
Serious Injury Crashes	73	6:00pm - 8:59pm (19%)	Sunday (21%)	September (12%)



House District 65 Crashes

Interstate Crashes

- Fatal
- Serious Injury

Non-interstate Crashes

- Fatal
- Serious Injury

The blue gradient represents the density of all crashes.

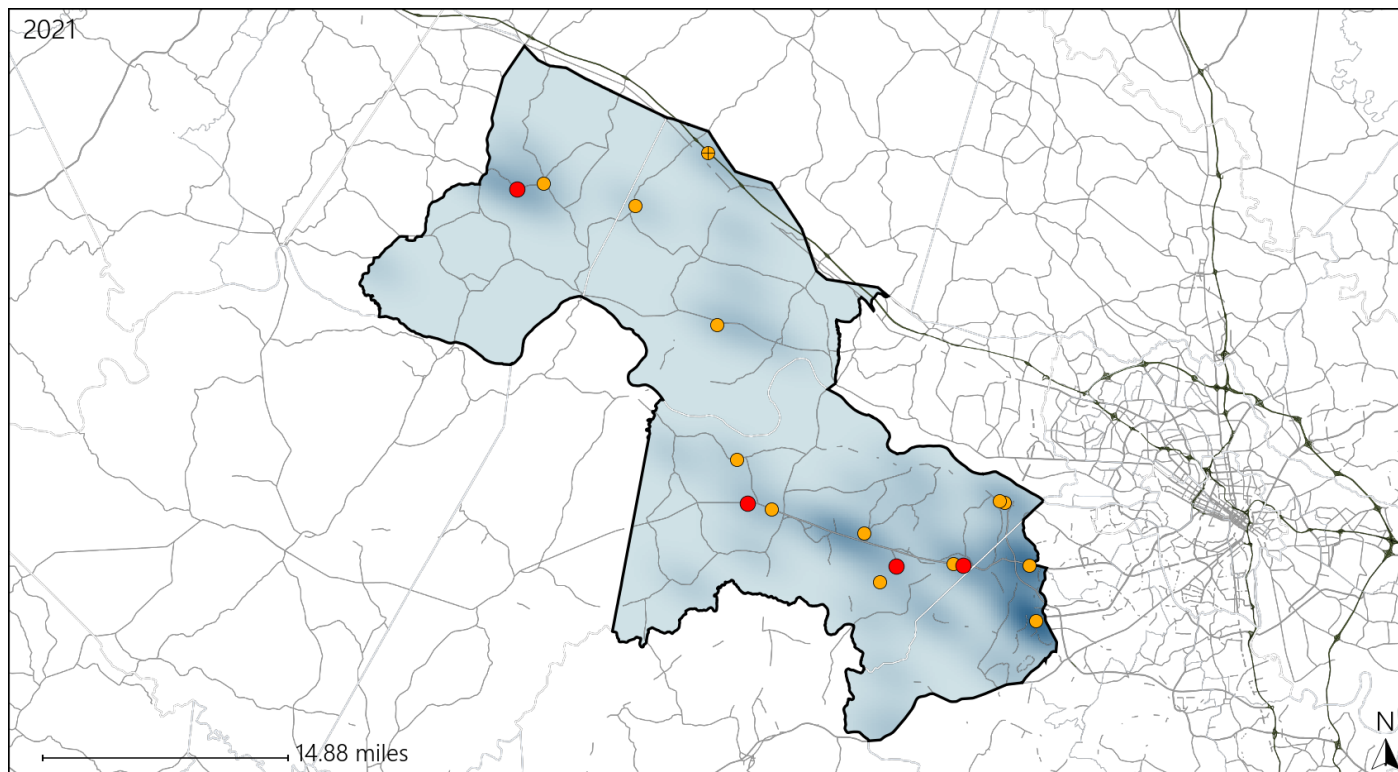


Available Crash Data - Calendar Year (CY)	CY 2018	CY 2019	CY 2020	CY 2021
Total Crashes	1083	1045	849	989
Fatal Crashes	11	9	11	12
Injury Crashes	318	288	238	262

Virginia House District 65 Alcohol Crash Statistics

Report Generated April, 2022

	Count	Highest Time Period(s)	Highest Day(s)	Highest Month(s)
Fatal Crashes	4	6:00pm - 8:59pm	Wednesday	February • June
Resulting Fatalities	4	(50%)	(50%)	(50%)
Serious Injury Crashes	13	Midnight - 2:59am	Sunday	May
		(38%)	(46%)	(31%)



House District 65 Alcohol-Related Crashes

Interstate Crashes

Non-interstate Crashes

- Fatal
- Serious Injury

- Fatal
- Serious Injury

The blue gradient represents the density of all alcohol-related crashes.

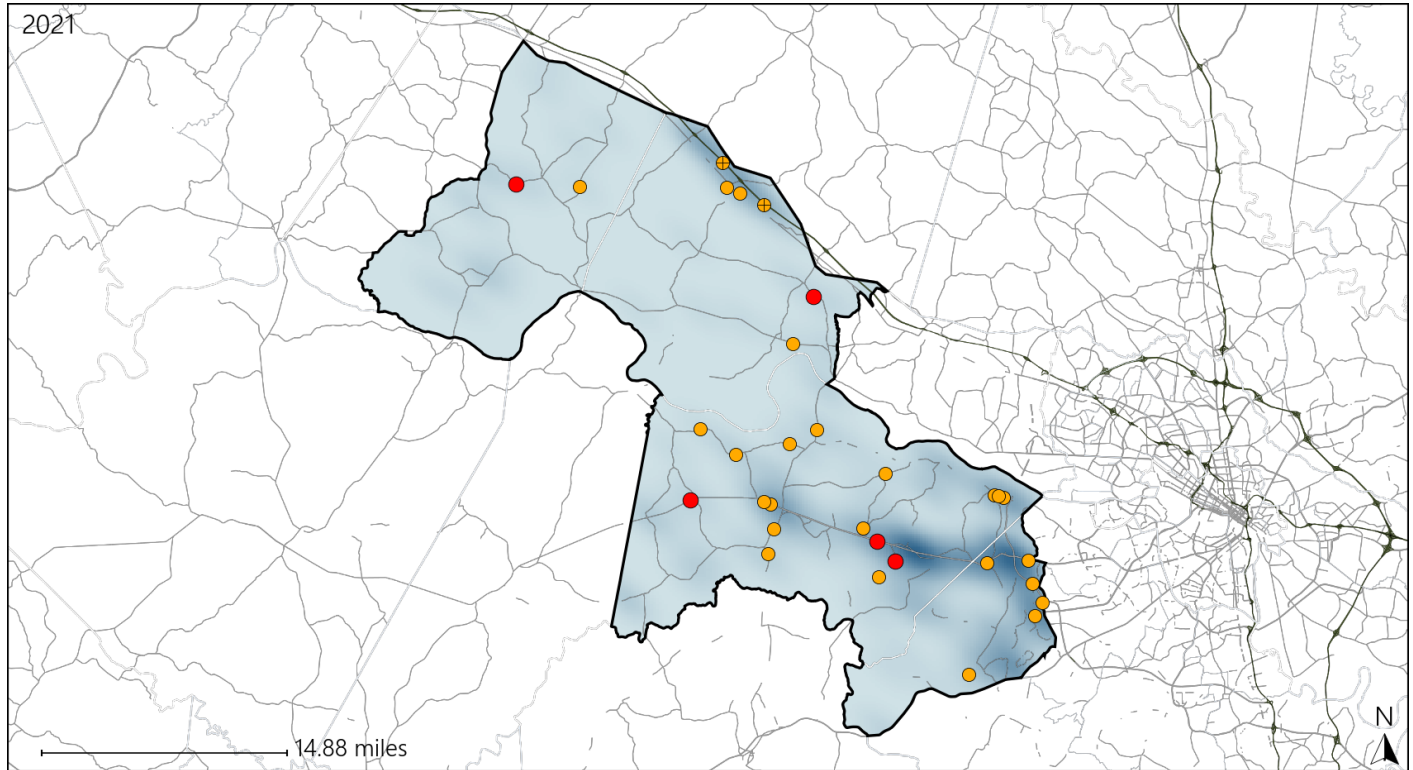


Available Crash Data - Calendar Year (CY)	CY 2018	CY 2019	CY 2020	CY 2021
Total Crashes	1083	1045	849	989
Fatal Crashes	11	9	11	12
Injury Crashes	318	288	238	262
Alcohol-Related Fatal Crashes	6	5	2	4
Percent of Alcohol-Related Fatal Crashes to Total Fatal Crashes	55%	56%	18%	33%
Alcohol-Related Injury Crashes	26	23	19	23
Percent of Alcohol-Related Injury Crashes to Total Injury Crashes	8%	8%	8%	9%

Virginia House District 65 Speed Crash Statistics

Report Generated April, 2022

	Count	Highest Time Period(s)	Highest Day(s)	Highest Month(s)
Fatal Crashes	5	6:00am - 8:59am	Saturday	August • February
Resulting Fatalities	5	9:00pm - 11:59pm (80%)	(40%)	(40%)
Serious Injury Crashes	26	6:00pm - 8:59pm (31%)	Sunday (35%)	May • September (30%)



House District 65 Speed-Related Crashes

Interstate Crashes

Non-interstate Crashes

- Fatal
- Serious Injury

- Fatal
- Serious Injury

The blue gradient represents the density of all speed-related crashes.

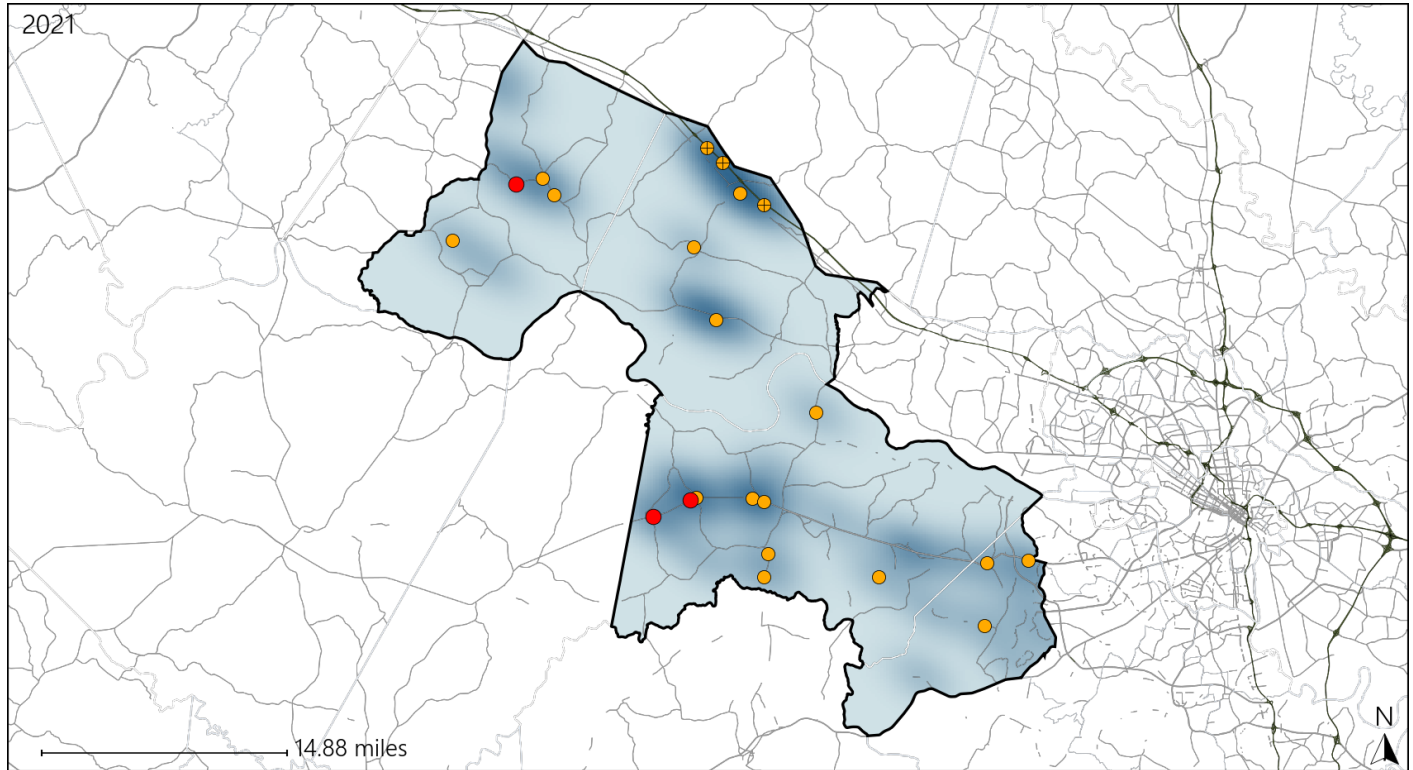


Available Crash Data - Calendar Year (CY)	CY 2018	CY 2019	CY 2020	CY 2021
Total Crashes	1083	1045	849	989
Fatal Crashes	11	9	11	12
Injury Crashes	318	288	238	262
Speed-Related Fatal Crashes	4	6	5	5
Percent of Speed-Related Fatal Crashes to Total Fatal Crashes	36%	67%	45%	42%
Speed-Related Injury Crashes	69	74	53	82
Percent of Speed-Related Injury Crashes to Total Injury Crashes	22%	26%	22%	31%

Virginia House District 65 Unrestrained Crash Statistics

Report Generated April, 2022

	Count	Highest Time Period(s)	Highest Day(s)	Highest Month(s)
Fatal Crashes	3	6:00pm - 8:59pm	Monday • Saturday	December • July
Unrestrained Fatalities	3	9:00pm - 11:59pm (66%)	(66%)	(66%)
Serious Injury Crashes	19	9:00pm - 11:59pm (26%)	Sunday (26%)	December • May (32%)



House District 65 Unrestrained-Related Crashes

Interstate Crashes

Non-interstate Crashes

- Fatal
- Serious Injury

- Fatal
- Serious Injury

The blue gradient represents the density of all unrestrained-related crashes.

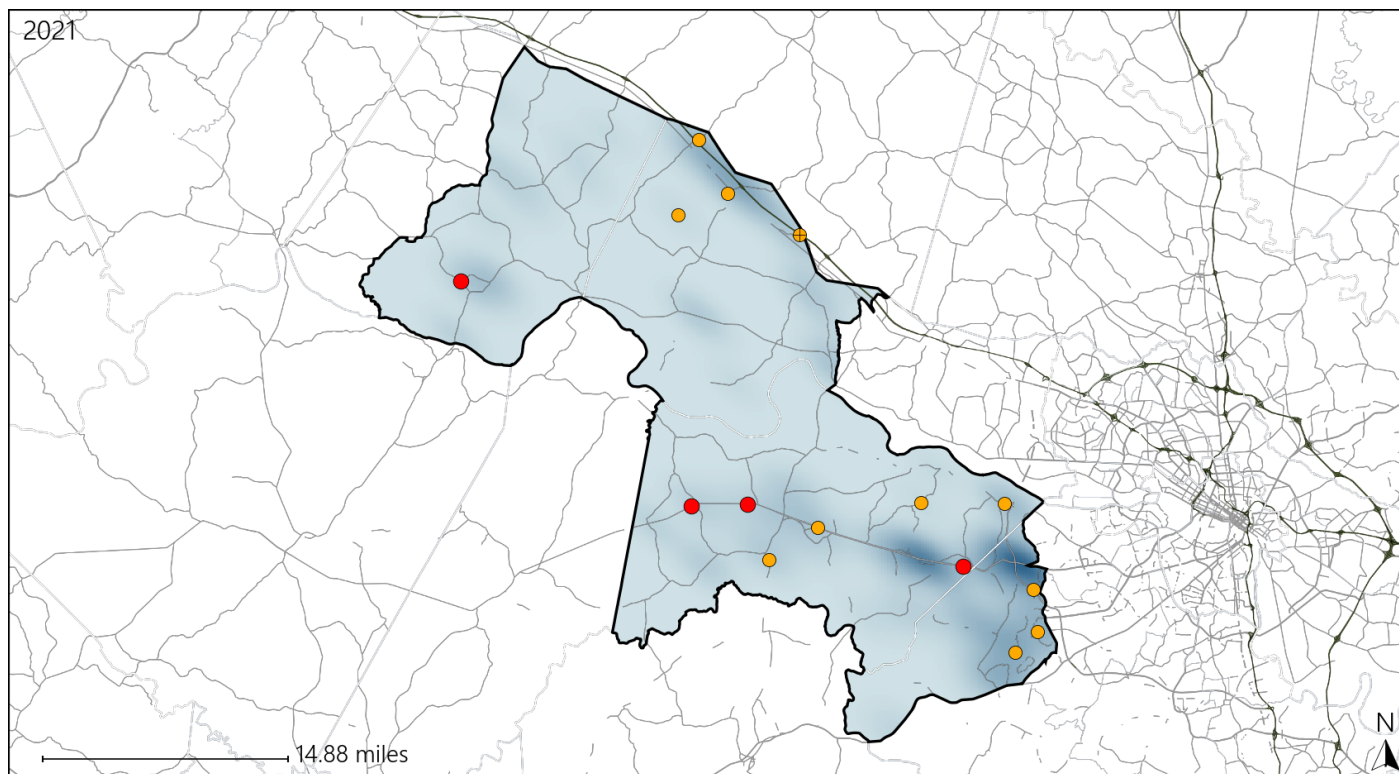


Available Crash Data - Calendar Year (CY)	CY 2018	CY 2019	CY 2020	CY 2021
Total Crashes	1083	1045	849	989
Fatalities	11	10	11	13
Injuries	461	450	315	358
Unrestrained Fatalities	4	3	6	3
Percent of Unrestrained Fatalities to Total Fatalities	36%	30%	55%	23%
Unrestrained Injuries	47	40	33	49
Percent of Unrestrained Injuries to Total Injuries	10%	9%	10%	14%

Virginia House District 65 Distracted Driving Crash Statistics

Report Generated April, 2022

	Count	Highest Time Period(s)	Highest Day(s)	Highest Month(s)
Fatal Crashes	4	9:00pm - 11:59pm	Thursday	February • July
Resulting Fatalities	4	(50%)	(50%)	(50%)
Serious Injury Crashes	11	3:00pm - 5:59pm 6:00pm - 8:59pm	Wednesday	March
		(54%)	(27%)	(36%)



House District 65 Distracted Driving-Related Crashes

Interstate Crashes

Non-interstate Crashes

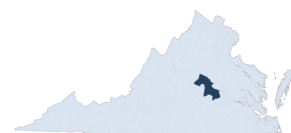
● Fatal

● Fatal

● Serious Injury

● Serious Injury

The blue gradient represents the density of all distracted driving-related crashes.



Available Crash Data - Calendar Year (CY)	CY 2018	CY 2019	CY 2020	CY 2021
Total Crashes	1083	1045	849	989
Fatal Crashes	11	9	11	12
Injury Crashes	318	288	238	262
Distracted Driving-Related Fatal Crashes	0	3	1	4
Percent of Distracted Driving-Related Fatal Crashes to Total Fatal Crashes	0%	33%	9%	33%
Distracted Driving-Related Injury Crashes	46	51	25	46
Percent of Distracted Driving-Related Injury Crashes to Total Injury Crashes	14%	18%	11%	18%