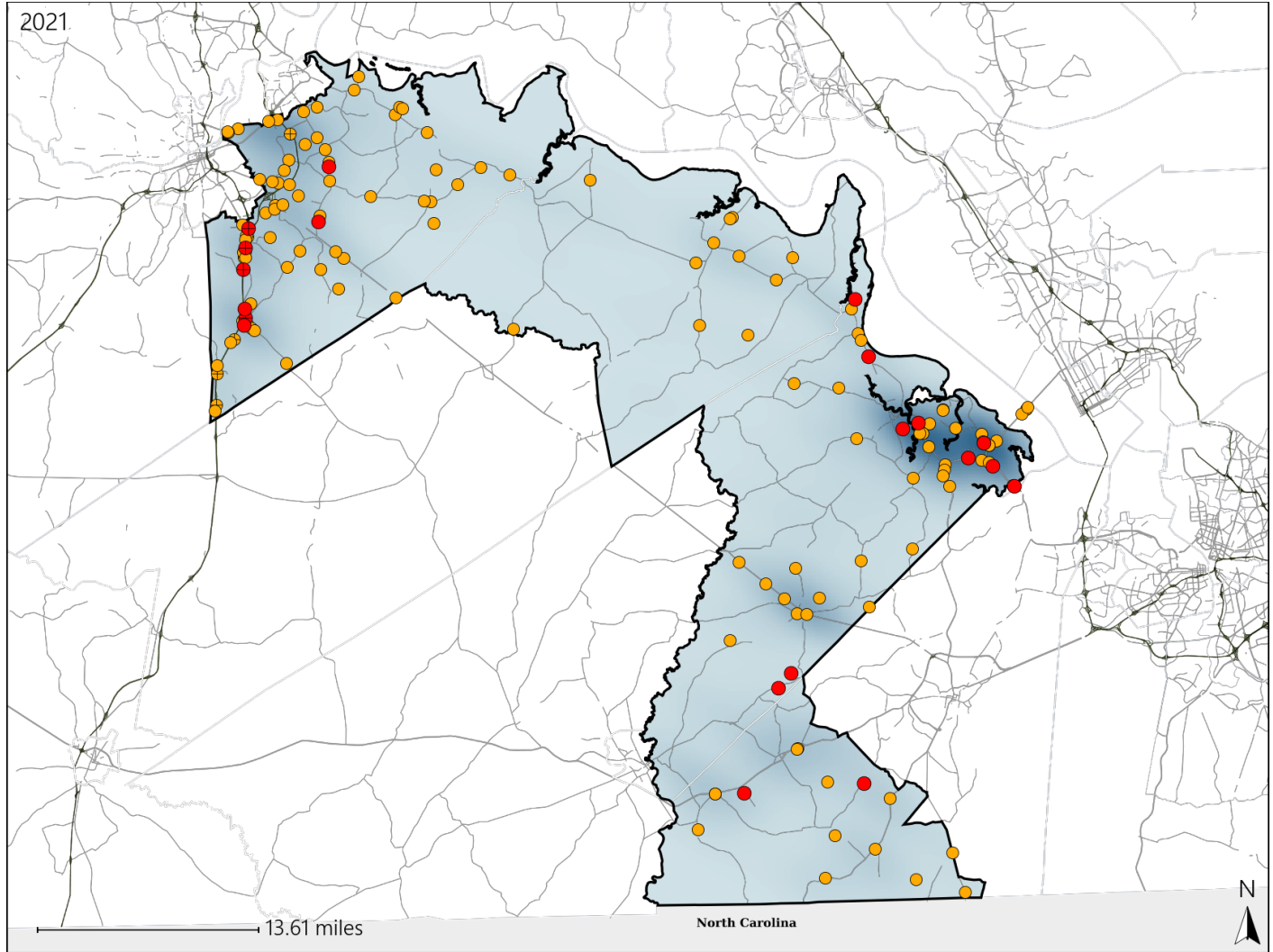


# Virginia House District 64 Crash Statistics

Report Generated April, 2022

	Count	Highest Time Period(s)	Highest Day(s)	Highest Month(s)
<b>Fatal Crashes</b>	<b>20</b>	<b>9:00am - 11:59am</b>	<b>Friday</b>	<b>December</b>
<b>Resulting Fatalities</b>	<b>22</b>	<b>(30%)</b>	<b>(35%)</b>	<b>(20%)</b>
<b>Serious Injury Crashes</b>	<b>135</b>	<b>Noon - 2:59pm</b>	<b>Saturday</b>	<b>October</b>
		<b>(27%)</b>	<b>(24%)</b>	<b>(15%)</b>



## House District 64 Crashes

Interstate Crashes

- Fatal
- Serious Injury

Non-interstate Crashes

- Fatal
- Serious Injury

The blue gradient represents the density of all crashes.



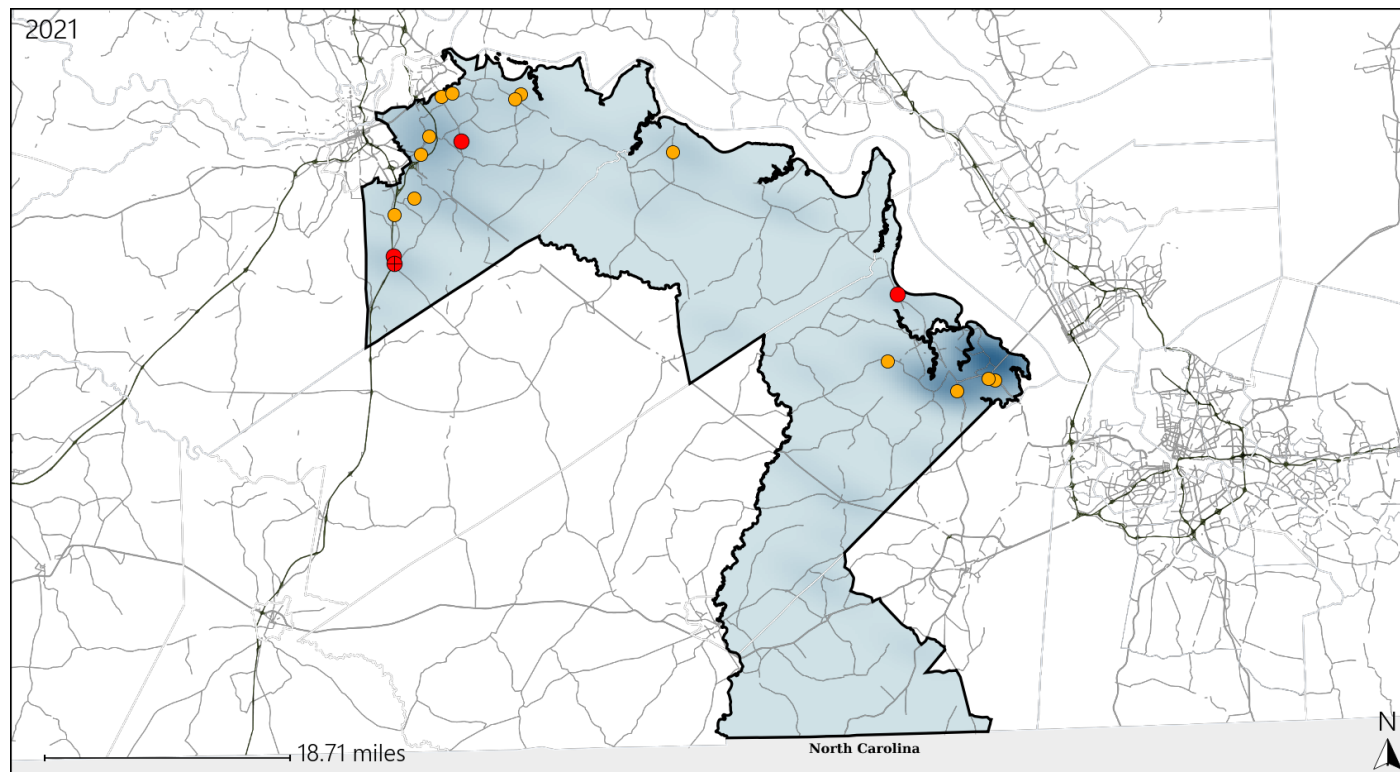
Available Crash Data - Calendar Year (CY)	CY 2018	CY 2019	CY 2020	CY 2021
Total Crashes	1344	1436	1291	1405
Fatal Crashes	9	22	14	20
Injury Crashes	381	502	498	532

Report of Crashes for January 1<sup>st</sup> - December 31<sup>st</sup>, 2021

# Virginia House District 64 Alcohol Crash Statistics

Report Generated April, 2022

	Count	Highest Time Period(s)	Highest Day(s)	Highest Month(s)
<b>Fatal Crashes</b>	<b>4</b>	<b>9:00am - 11:59am</b>	<b>Sunday</b>	<b>May</b>
<b>Resulting Fatalities</b>	<b>4</b>	<b>(50%)</b>	<b>(50%)</b>	<b>(50%)</b>
<b>Serious Injury Crashes</b>	<b>13</b>	<b>6:00pm - 8:59pm</b>	<b>Saturday</b>	<b>February • June</b>
		<b>(31%)</b>	<b>(54%)</b>	<b>(30%)</b>



## House District 64 Alcohol-Related Crashes

Interstate Crashes

Non-interstate Crashes

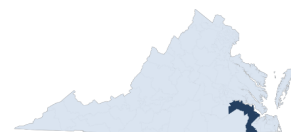
● Fatal

● Fatal

● Serious Injury

● Serious Injury

The blue gradient represents the density of all alcohol-related crashes.



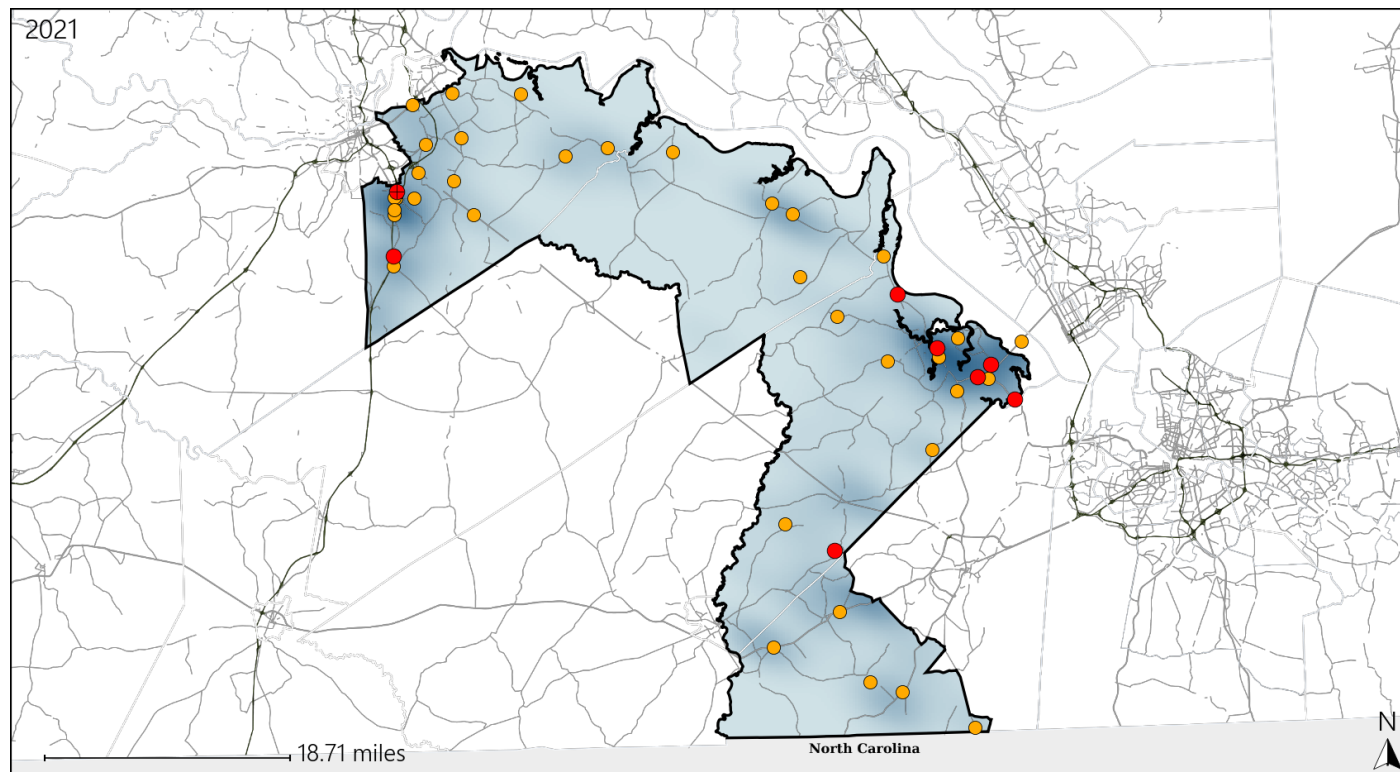
Available Crash Data - Calendar Year (CY)	CY 2018	CY 2019	CY 2020	CY 2021
Total Crashes	1344	1436	1291	1405
Fatal Crashes	9	22	14	20
Injury Crashes	381	502	498	532
Alcohol-Related Fatal Crashes	3	10	2	4
Percent of Alcohol-Related Fatal Crashes to Total Fatal Crashes	33%	45%	14%	20%
Alcohol-Related Injury Crashes	33	37	33	34
Percent of Alcohol-Related Injury Crashes to Total Injury Crashes	9%	7%	7%	6%

Report of Crashes for January 1<sup>st</sup> - December 31<sup>st</sup>, 2021

# Virginia House District 64 Speed Crash Statistics

Report Generated April, 2022

	Count	Highest Time Period(s)	Highest Day(s)	Highest Month(s)
<b>Fatal Crashes</b>	<b>8</b>	<b>3:00pm - 5:59pm</b>	<b>Monday</b>	<b>April</b>
<b>Resulting Fatalities</b>	<b>9</b>	<b>(38%)</b>	<b>(38%)</b>	<b>(25%)</b>
<b>Serious Injury Crashes</b>	<b>36</b>	<b>3:00pm - 5:59pm</b>	<b>Saturday</b>	<b>May • October</b>
		<b>(22%)</b>	<b>(33%)</b>	<b>(38%)</b>



## House District 64 Speed-Related Crashes

Interstate Crashes

Non-interstate Crashes

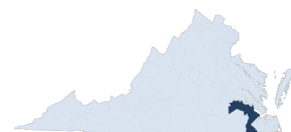
● Fatal

● Fatal

● Serious Injury

● Serious Injury

The blue gradient represents the density of all speed-related crashes.

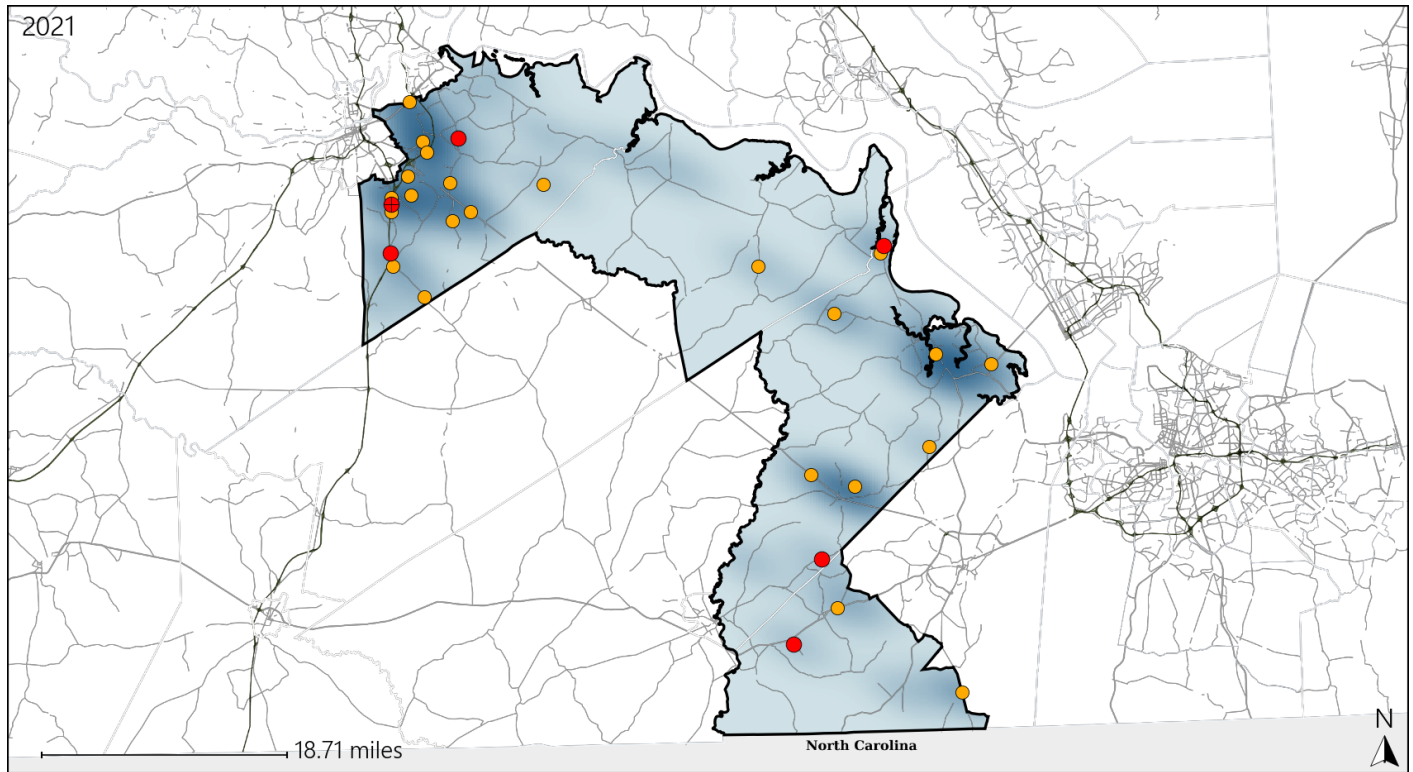


Available Crash Data - Calendar Year (CY)	CY 2018	CY 2019	CY 2020	CY 2021
Total Crashes	1344	1436	1291	1405
Fatal Crashes	9	22	14	20
Injury Crashes	381	502	498	532
Speed-Related Fatal Crashes	3	7	7	8
Percent of Speed-Related Fatal Crashes to Total Fatal Crashes	33%	32%	50%	40%
Speed-Related Injury Crashes	80	100	95	100
Percent of Speed-Related Injury Crashes to Total Injury Crashes	21%	20%	19%	19%

# Virginia House District 64 Unrestrained Crash Statistics

Report Generated April, 2022

	Count	Highest Time Period(s)	Highest Day(s)	Highest Month(s)
<b>Fatal Crashes</b>	<b>6</b>	<b>9:00am - 11:59am</b>	<b>Sunday</b>	<b>November</b>
<b>Unrestrained Fatalities</b>	<b>6</b>	<b>(50%)</b>	<b>(50%)</b>	<b>(33%)</b>
<b>Serious Injury Crashes</b>	<b>23</b>	<b>6:00am - 8:59am</b> <b>Noon - 2:59pm</b>	<b>Saturday</b>	<b>March</b>
		<b>(34%)</b>	<b>(30%)</b>	<b>(22%)</b>



## House District 64 Unrestrained-Related Crashes

Interstate Crashes

Non-interstate Crashes

- Fatal
- Serious Injury

- Fatal
- Serious Injury

The blue gradient represents the density of all unrestrained-related crashes.



Available Crash Data - Calendar Year (CY)	CY 2018	CY 2019	CY 2020	CY 2021
Total Crashes	1344	1436	1291	1405
Fatalities	10	27	15	22
Injuries	586	783	757	848
Unrestrained Fatalities	3	7	7	6
Percent of Unrestrained Fatalities to Total Fatalities	30%	26%	47%	27%
Unrestrained Injuries	45	81	64	60
Percent of Unrestrained Injuries to Total Injuries	8%	10%	8%	7%

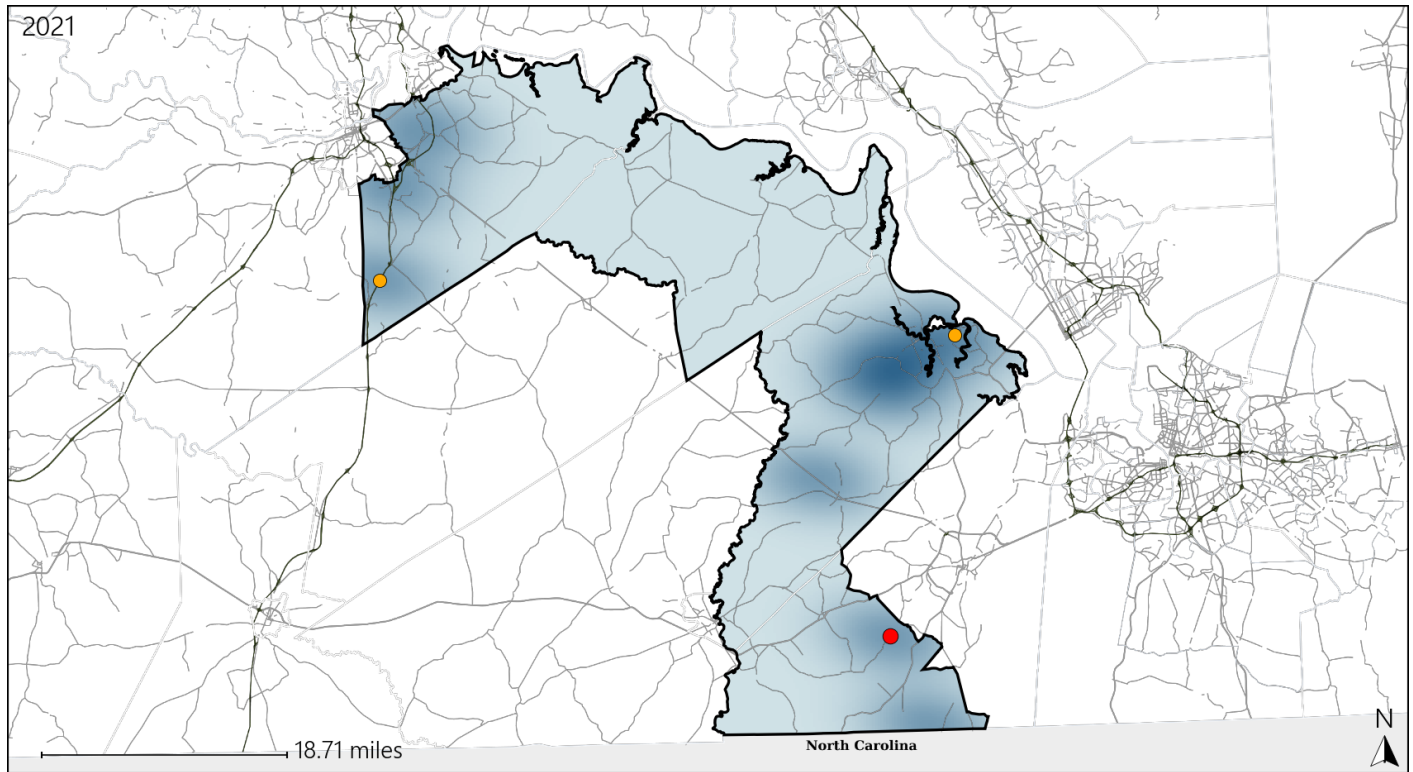


Report of Crashes for January 1<sup>st</sup> - December 31<sup>st</sup>, 2021

# Virginia House District 64 Pedestrian Crash Statistics

Report Generated April, 2022

	Count	Highest Time Period(s)	Highest Day(s)	Highest Month(s)
<b>Fatal Crashes</b>	<b>1</b>	<b>9:00pm - 11:59pm</b>	<b>Friday</b>	<b>October</b>
<b>Pedestrian Fatalities</b>	<b>1</b>	<b>(100%)</b>	<b>(100%)</b>	<b>(100%)</b>
<b>Serious Injury Crashes</b>	<b>2</b>	<b>3:00pm - 5:59pm</b>	<b>Monday • Wednesday</b>	<b>July • September</b>
		<b>Noon - 2:59pm</b>	<b>(100%)</b>	<b>(100%)</b>



## House District 64 Pedestrian-Related Crashes

Interstate Crashes

Non-interstate Crashes

● Fatal

● Fatal

⊕ Serious Injury

⊕ Serious Injury

The blue gradient represents the density of all pedestrian-related crashes.

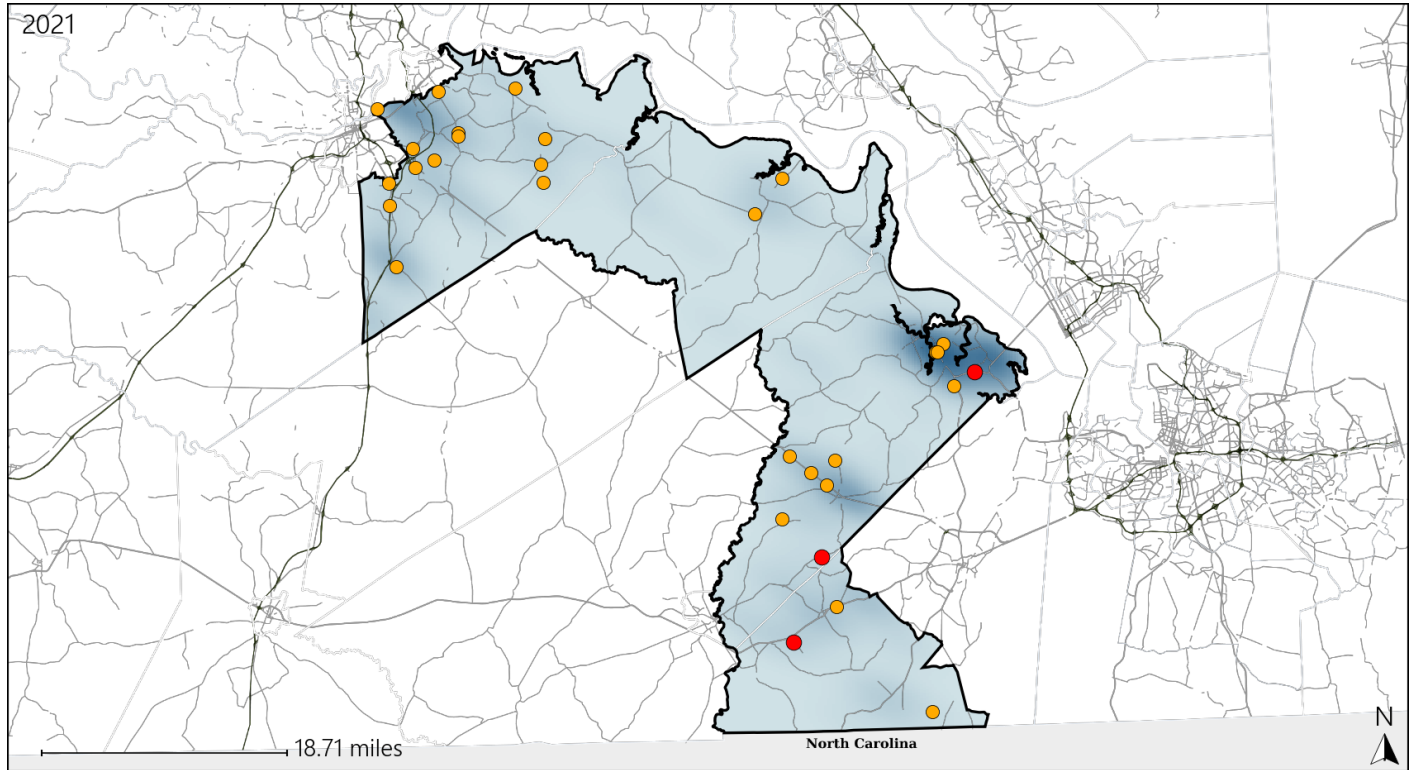


Available Crash Data - Calendar Year (CY)	CY 2018	CY 2019	CY 2020	CY 2021
Total Crashes	1344	1436	1291	1405
Fatal Crashes	9	22	14	20
Injury Crashes	381	502	498	532
Pedestrian-Related Fatal Crashes	1	3	0	1
Percent of Pedestrian-Related Fatal Crashes to Total Fatal Crashes	11%	14%	0%	5%
Pedestrian-Related Injury Crashes	6	4	10	8
Percent of Pedestrian-Related Injury Crashes to Total Injury Crashes	2%	1%	2%	2%

# Virginia House District 64 Distracted Driving Crash Statistics

Report Generated April, 2022

	Count	Highest Time Period(s)	Highest Day(s)	Highest Month(s)
<b>Fatal Crashes</b>	<b>3</b>	6:00pm - 8:59pm	Monday	April - July
<b>Resulting Fatalities</b>	<b>3</b>	9:00am - 11:59am (66%)	(67%)	(66%)
<b>Serious Injury Crashes</b>	<b>27</b>	Noon - 2:59pm (33%)	Saturday (30%)	October (26%)



## House District 64 Distracted Driving-Related Crashes

Interstate Crashes

Non-interstate Crashes

- Fatal
- Serious Injury

- Fatal
- Serious Injury

The blue gradient represents the density of all distracted driving-related crashes.



Available Crash Data - Calendar Year (CY)	CY 2018	CY 2019	CY 2020	CY 2021
Total Crashes	1344	1436	1291	1405
Fatal Crashes	9	22	14	20
Injury Crashes	381	502	498	532
Distracted Driving-Related Fatal Crashes	3	0	1	3
Percent of Distracted Driving-Related Fatal Crashes to Total Fatal Crashes	33%	0%	7%	15%
Distracted Driving-Related Injury Crashes	92	117	111	106
Percent of Distracted Driving-Related Injury Crashes to Total Injury Crashes	24%	23%	22%	20%