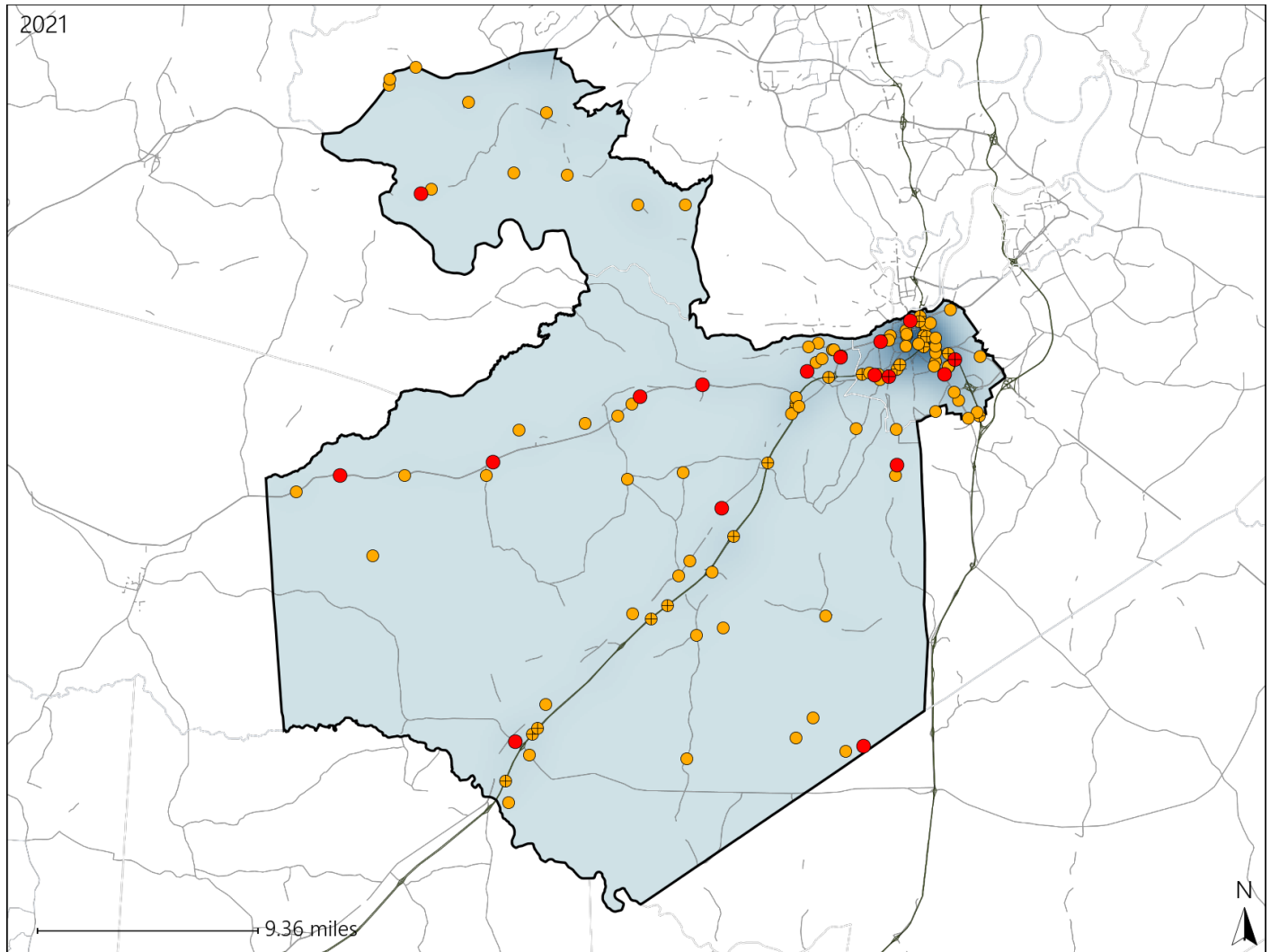


Virginia House District 63 Crash Statistics

Report Generated April, 2022

	Count	Highest Time Period(s)	Highest Day(s)	Highest Month(s)
Fatal Crashes	17	Midnight - 2:59am	Friday	January
Resulting Fatalities	18	(24%)	(35%)	(24%)
Serious Injury Crashes	94	3:00pm - 5:59pm 6:00pm - 8:59pm	Saturday	August • December
		(38%)	(17%)	(22%)



House District 63 Crashes

Interstate Crashes

- Fatal
- Serious Injury

Non-interstate Crashes

- Fatal
- Serious Injury

The blue gradient represents the density of all crashes.



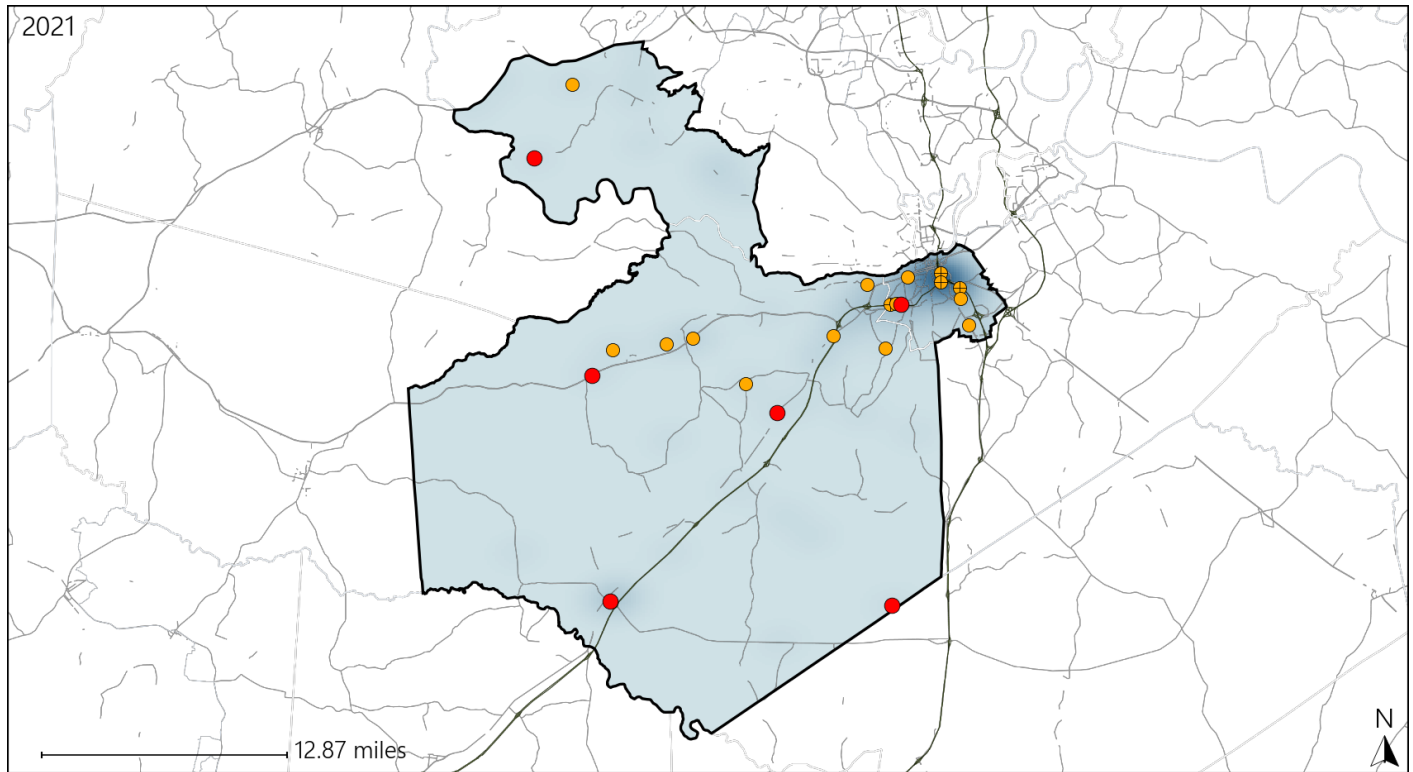
Available Crash Data - Calendar Year (CY)	CY 2018	CY 2019	CY 2020	CY 2021
Total Crashes	1655	1564	1458	1615
Fatal Crashes	9	18	15	17
Injury Crashes	619	612	487	425

Report of Crashes for January 1st - December 31st, 2021

Virginia House District 63 Alcohol Crash Statistics

Report Generated April, 2022

	Count	Highest Time Period(s)	Highest Day(s)	Highest Month(s)
Fatal Crashes	6	Midnight - 2:59am	Friday	January
Resulting Fatalities	6	(33%)	(50%)	(50%)
Serious Injury Crashes	16	6:00pm - 8:59pm	Friday • Saturday	December
		Midnight - 2:59am	(50%)	(19%)
		(76%)		



House District 63 Alcohol-Related Crashes

Interstate Crashes

Non-interstate Crashes

● Fatal

● Fatal

⊕ Serious Injury

⊕ Serious Injury

The blue gradient represents the density of all alcohol-related crashes.

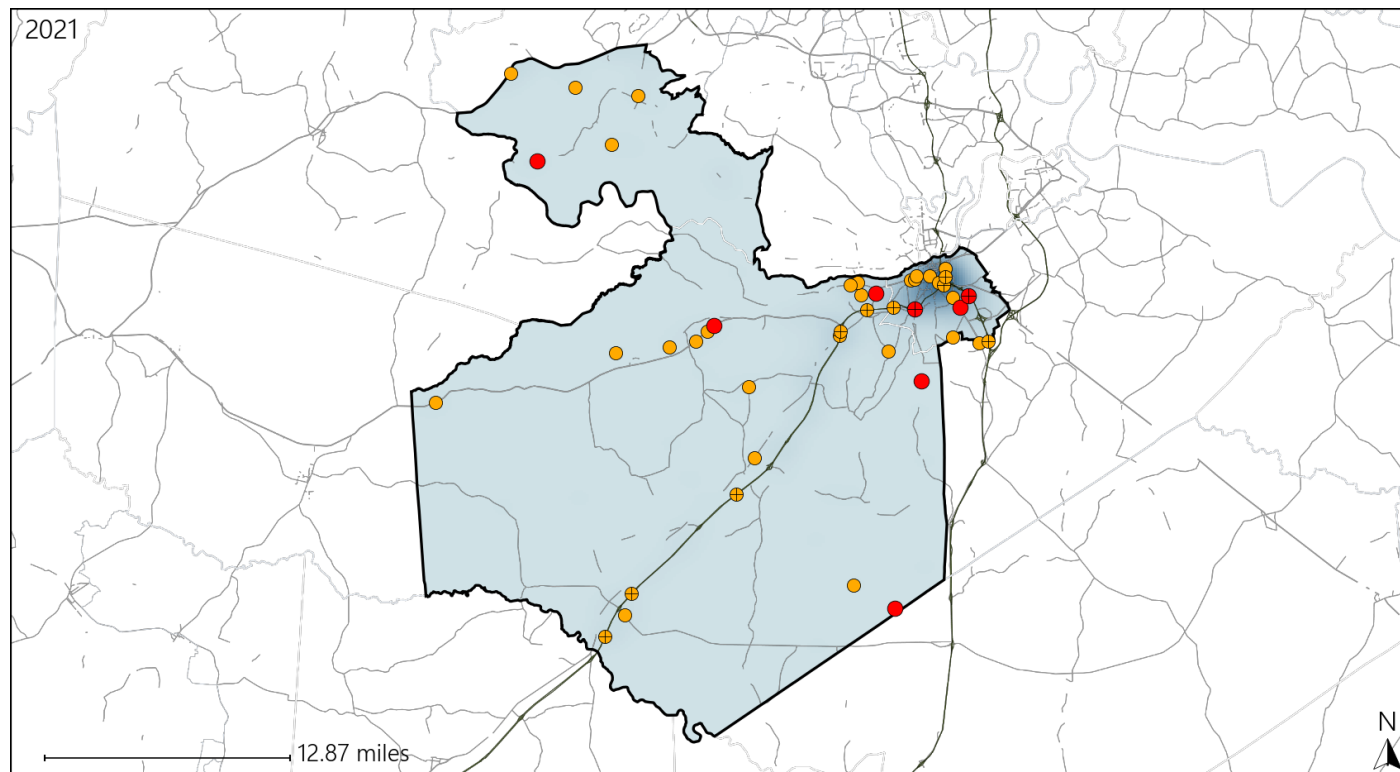


Available Crash Data - Calendar Year (CY)	CY 2018	CY 2019	CY 2020	CY 2021
Total Crashes	1655	1564	1458	1615
Fatal Crashes	9	18	15	17
Injury Crashes	619	612	487	425
Alcohol-Related Fatal Crashes	7	5	4	6
Percent of Alcohol-Related Fatal Crashes to Total Fatal Crashes	78%	28%	27%	35%
Alcohol-Related Injury Crashes	42	40	46	37
Percent of Alcohol-Related Injury Crashes to Total Injury Crashes	7%	7%	9%	9%

Virginia House District 63 Speed Crash Statistics

Report Generated April, 2022

	Count	Highest Time Period(s)	Highest Day(s)	Highest Month(s)
Fatal Crashes	8	3:00pm - 5:59pm	Tuesday	January • July
Resulting Fatalities	9	(25%)	(38%)	(50%)
Serious Injury Crashes	36	6:00pm - 8:59pm	Tuesday	March • November
		(25%)	(19%)	(28%)



House District 63 Speed-Related Crashes

Interstate Crashes

Non-interstate Crashes

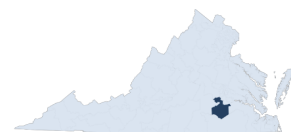
● Fatal

● Fatal

⊕ Serious Injury

⊕ Serious Injury

The blue gradient represents the density of all speed-related crashes.

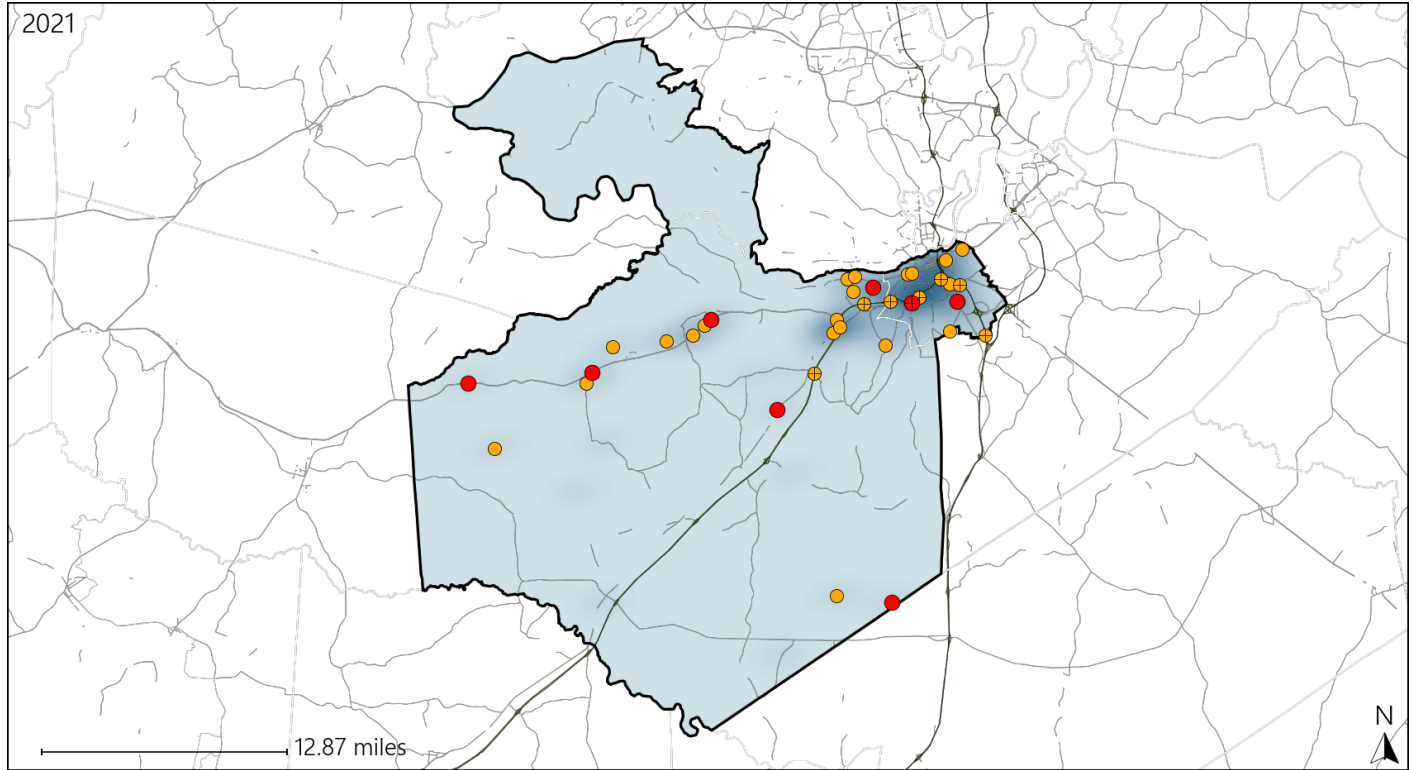


Available Crash Data - Calendar Year (CY)	CY 2018	CY 2019	CY 2020	CY 2021
Total Crashes	1655	1564	1458	1615
Fatal Crashes	9	18	15	17
Injury Crashes	619	612	487	425
Speed-Related Fatal Crashes	6	8	8	8
Percent of Speed-Related Fatal Crashes to Total Fatal Crashes	67%	44%	53%	47%
Speed-Related Injury Crashes	152	138	136	131
Percent of Speed-Related Injury Crashes to Total Injury Crashes	25%	23%	28%	31%

Virginia House District 63 Unrestrained Crash Statistics

Report Generated April, 2022

	Count	Highest Time Period(s)	Highest Day(s)	Highest Month(s)
Fatal Crashes	8	Midnight - 2:59am	Friday	April • January
Unrestrained Fatalities	9	(38%)	(38%)	(50%)
Serious Injury Crashes	27	Midnight - 2:59am	Thursday • Tuesday	December
		(26%)	(38%)	(22%)



House District 63 Unrestrained-Related Crashes

Interstate Crashes

Non-interstate Crashes

● Fatal

● Fatal

● Serious Injury

● Serious Injury

The blue gradient represents the density of all unrestrained-related crashes.

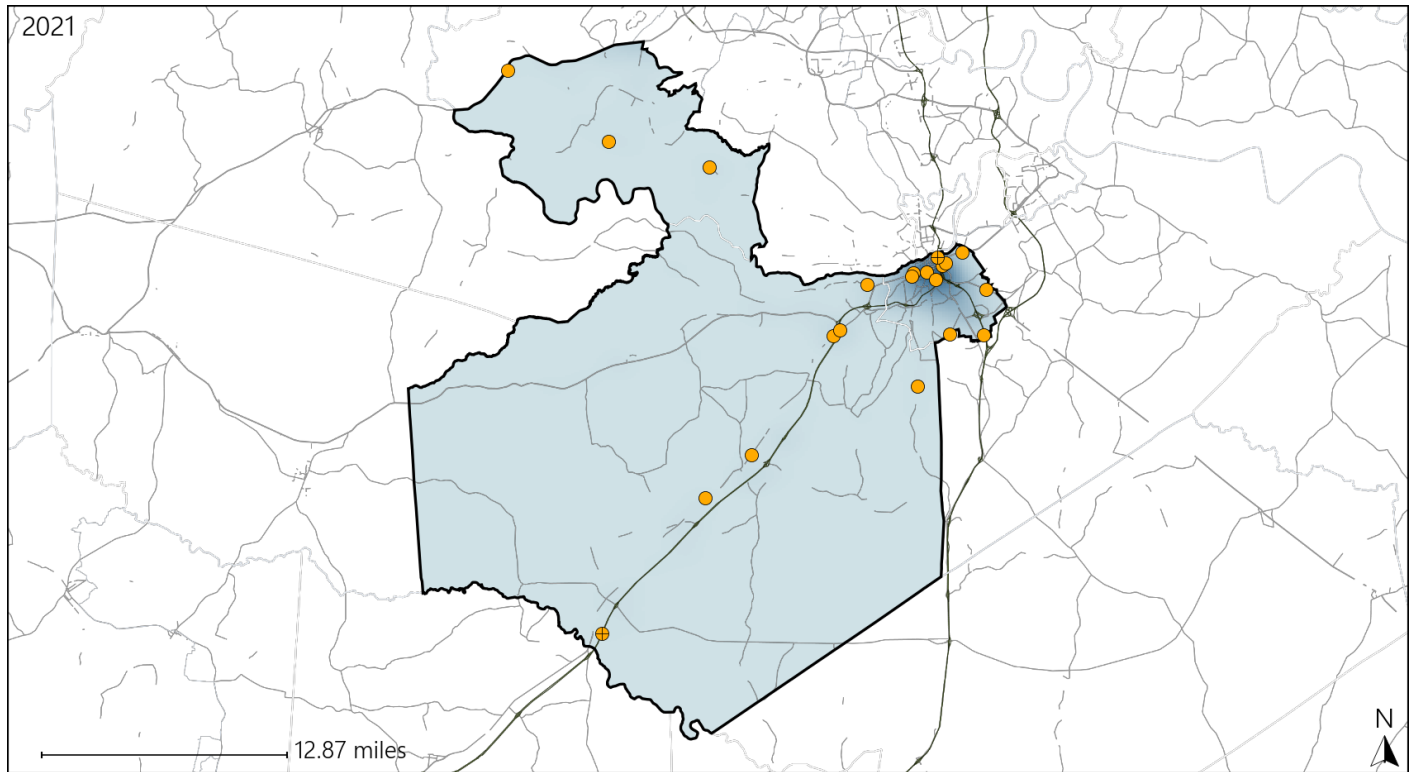


Available Crash Data - Calendar Year (CY)	CY 2018	CY 2019	CY 2020	CY 2021
Total Crashes	1655	1564	1458	1615
Fatalities	10	21	17	18
Injuries	922	935	710	635
Unrestrained Fatalities	5	12	8	9
Percent of Unrestrained Fatalities to Total Fatalities	50%	57%	47%	50%
Unrestrained Injuries	77	62	93	85
Percent of Unrestrained Injuries to Total Injuries	8%	7%	13%	13%

Virginia House District 63 Distracted Driving Crash Statistics

Report Generated April, 2022

	Count	Highest Time Period(s)	Highest Day(s)	Highest Month(s)
Fatal Crashes	0	-	-	-
Resulting Fatalities	0	-	-	-
Serious Injury Crashes	21	6:00pm - 8:59pm 9:00am - 11:59am (38%)	Saturday (24%)	September (19%)



House District 63 Distracted Driving-Related Crashes

Interstate Crashes

Non-interstate Crashes

- Fatal
- ⊕ Serious Injury

- Fatal
- Serious Injury

The blue gradient represents the density of all distracted driving-related crashes.



Available Crash Data - Calendar Year (CY)	CY 2018	CY 2019	CY 2020	CY 2021
Total Crashes	1655	1564	1458	1615
Fatal Crashes	9	18	15	17
Injury Crashes	619	612	487	425
Distracted Driving-Related Fatal Crashes	4	3	1	0
Percent of Distracted Driving-Related Fatal Crashes to Total Fatal Crashes	44%	17%	7%	0%
Distracted Driving-Related Injury Crashes	154	129	87	86
Percent of Distracted Driving-Related Injury Crashes to Total Injury Crashes	25%	21%	18%	20%