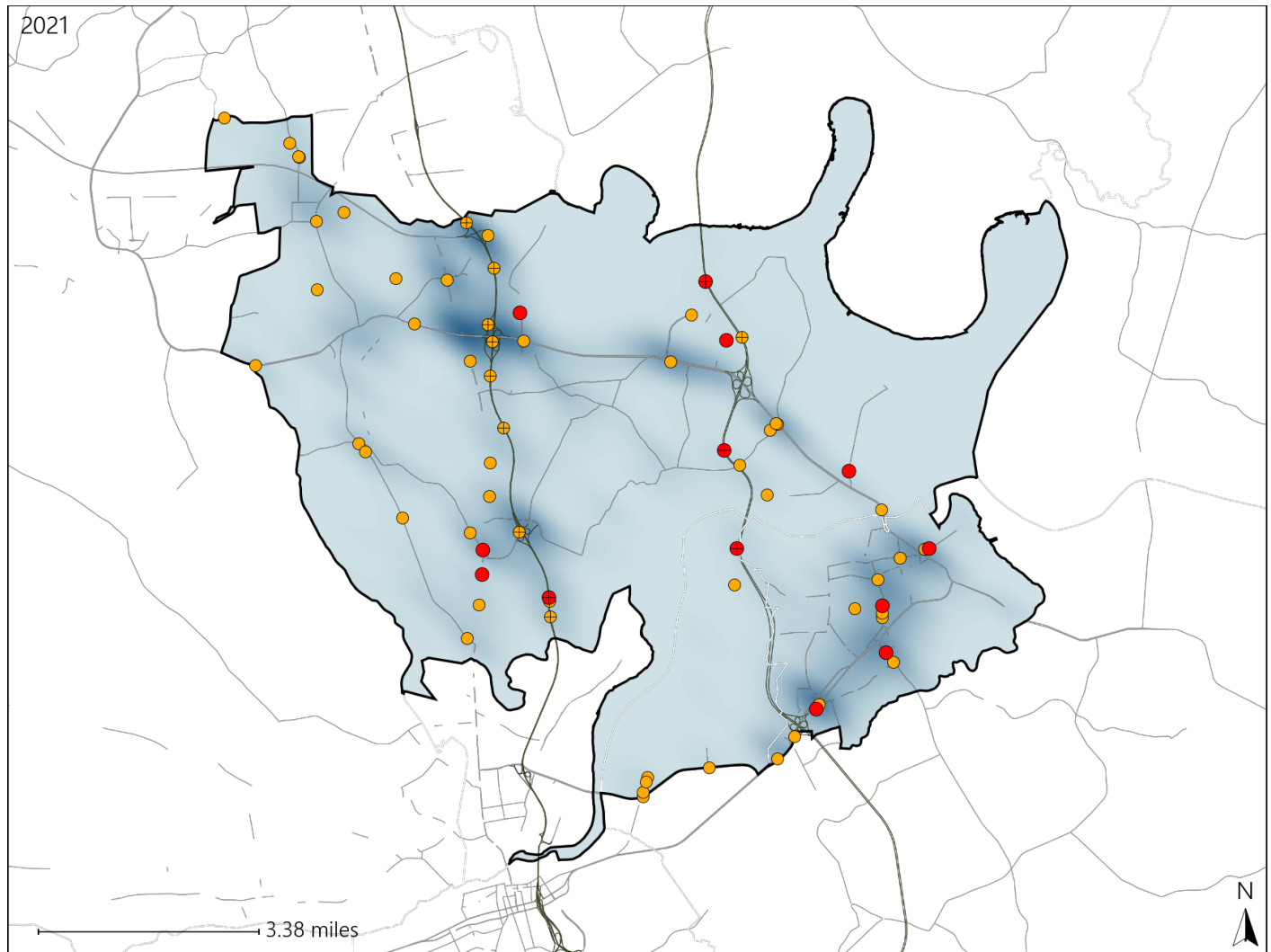


Virginia House District 62 Crash Statistics

Report Generated April, 2022

	Count	Highest Time Period(s)	Highest Day(s)	Highest Month(s)
Fatal Crashes	13	9:00pm - 11:59pm	Friday	April - August
Resulting Fatalities	14	(23%)	(31%)	(30%)
Serious Injury Crashes	56	3:00pm - 5:59pm	Saturday	January
		(25%)	(21%)	(18%)



House District 62 Crashes

Interstate Crashes

- Fatal
- Serious Injury

Non-interstate Crashes

- Fatal
- Serious Injury

The blue gradient represents the density of all crashes.

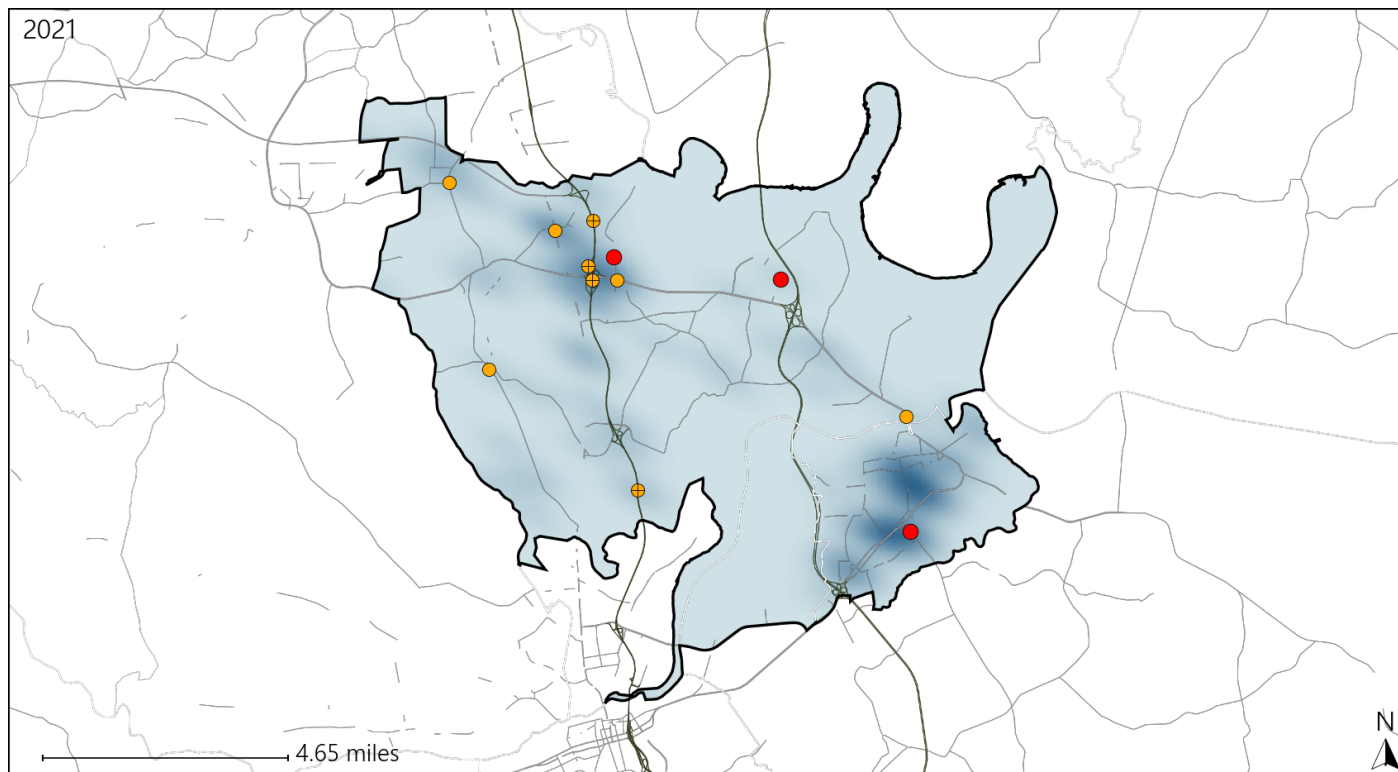


Available Crash Data - Calendar Year (CY)	CY 2018	CY 2019	CY 2020	CY 2021
Total Crashes	1710	1538	1376	1538
Fatal Crashes	7	5	6	13
Injury Crashes	649	623	558	633

Virginia House District 62 Alcohol Crash Statistics

Report Generated April, 2022

	Count	Highest Time Period(s)	Highest Day(s)	Highest Month(s)
Fatal Crashes	3	9:00pm - 11:59pm	Friday • Tuesday	February • March
Resulting Fatalities	3	(67%)	(66%)	(66%)
Serious Injury Crashes	9	9:00pm - 11:59pm	Saturday	January
		(33%)	(33%)	(33%)



House District 62 Alcohol-Related Crashes

Interstate Crashes

Non-interstate Crashes

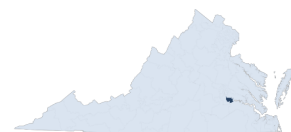
● Fatal

● Fatal

● Serious Injury

● Serious Injury

The blue gradient represents the density of all alcohol-related crashes.

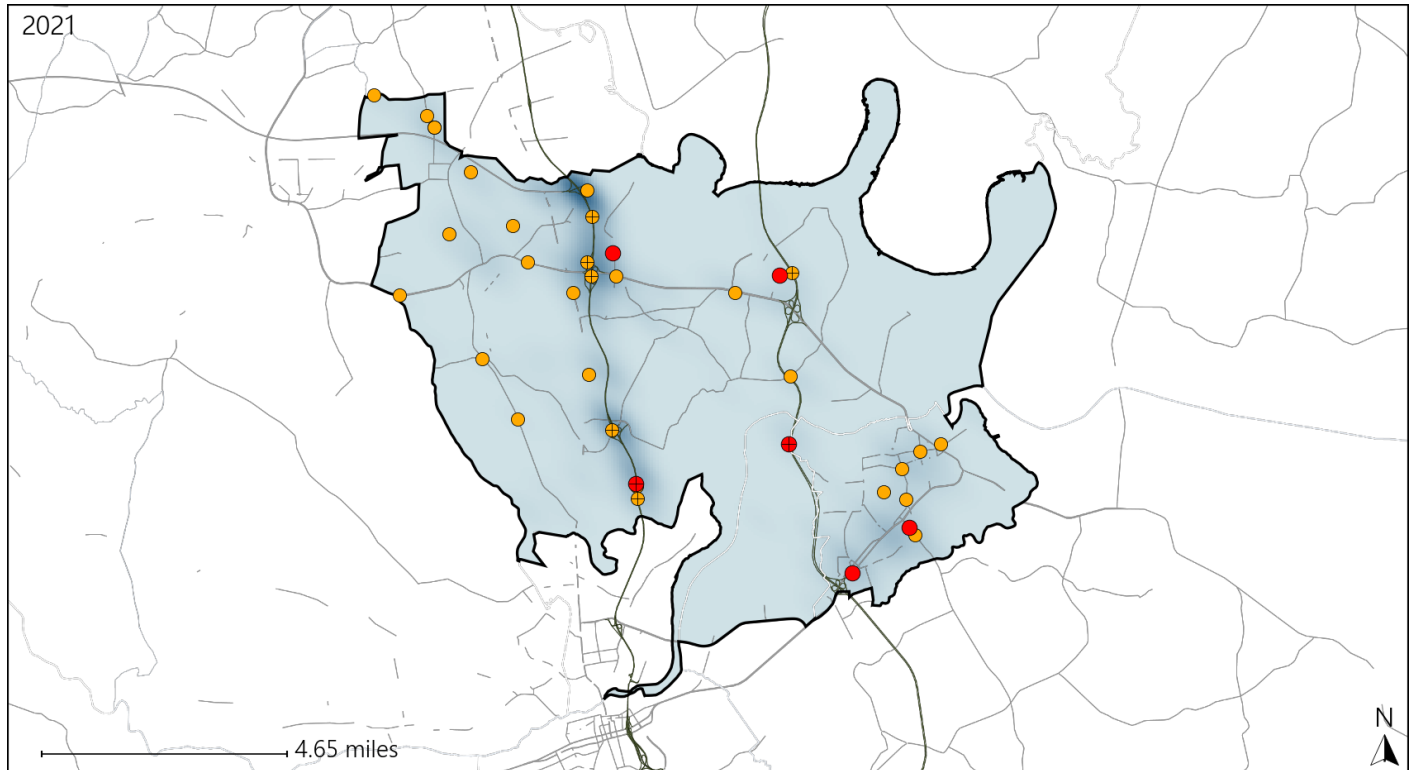


Available Crash Data - Calendar Year (CY)	CY 2018	CY 2019	CY 2020	CY 2021
Total Crashes	1710	1538	1376	1538
Fatal Crashes	7	5	6	13
Injury Crashes	649	623	558	633
Alcohol-Related Fatal Crashes	5	3	1	3
Percent of Alcohol-Related Fatal Crashes to Total Fatal Crashes	71%	60%	17%	23%
Alcohol-Related Injury Crashes	48	24	46	66
Percent of Alcohol-Related Injury Crashes to Total Injury Crashes	7%	4%	8%	10%

Virginia House District 62 Speed Crash Statistics

Report Generated April, 2022

	Count	Highest Time Period(s)	Highest Day(s)	Highest Month(s)
Fatal Crashes	6	9:00pm - 11:59pm	Friday	April - December
Resulting Fatalities	7	(50%)	(33%)	(34%)
Serious Injury Crashes	30	6:00pm - 8:59pm	Tuesday	February
		(23%)	(20%)	(20%)



House District 62 Speed-Related Crashes

Interstate Crashes

Non-interstate Crashes

- Fatal
- Serious Injury

- Fatal
- Serious Injury

The blue gradient represents the density of all speed-related crashes.

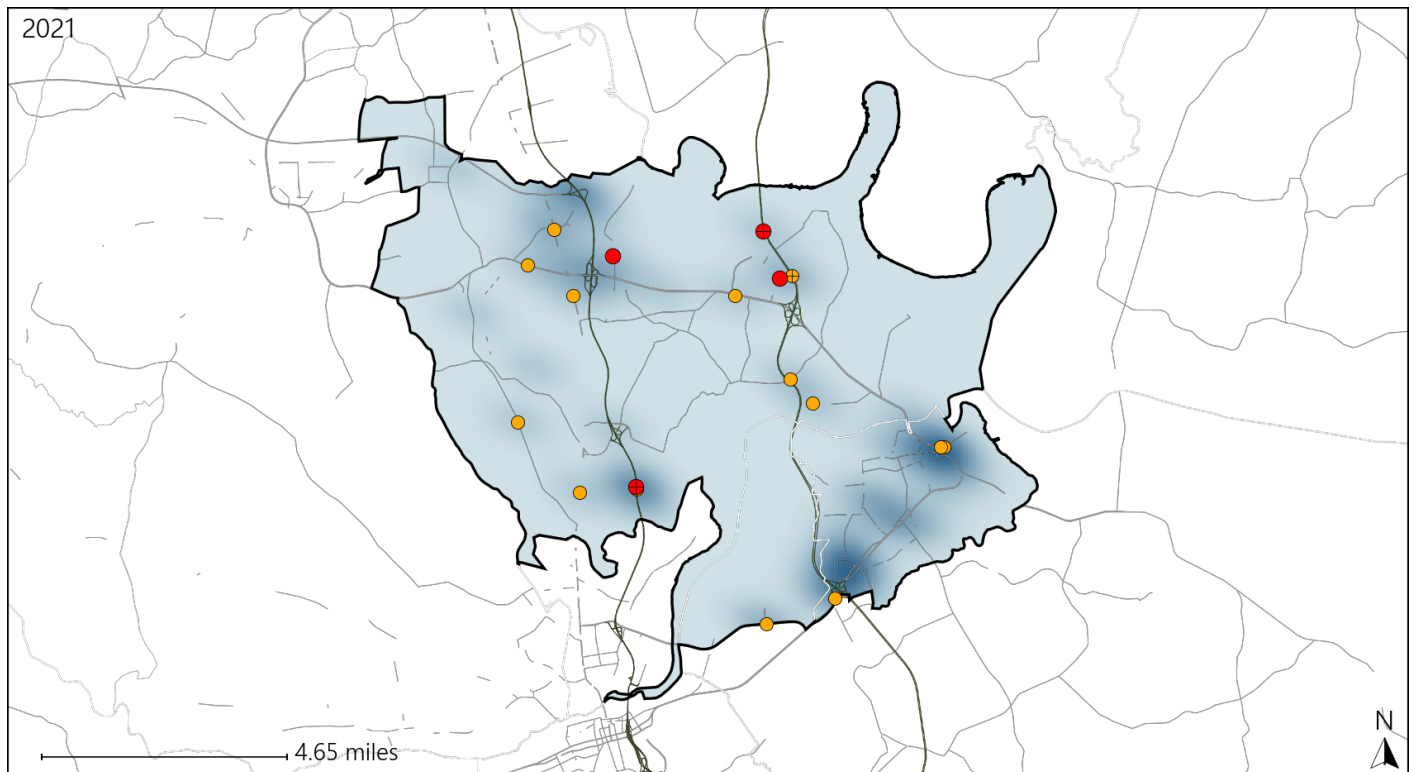


Available Crash Data - Calendar Year (CY)	CY 2018	CY 2019	CY 2020	CY 2021
Total Crashes	1710	1538	1376	1538
Fatal Crashes	7	5	6	13
Injury Crashes	649	623	558	633
Speed-Related Fatal Crashes	2	2	5	6
Percent of Speed-Related Fatal Crashes to Total Fatal Crashes	29%	40%	83%	46%
Speed-Related Injury Crashes	110	116	108	143
Percent of Speed-Related Injury Crashes to Total Injury Crashes	17%	19%	19%	23%

Virginia House District 62 Unrestrained Crash Statistics

Report Generated April, 2022

	Count	Highest Time Period(s)	Highest Day(s)	Highest Month(s)
Fatal Crashes	4	9:00pm - 11:59pm	Friday	April • January
Unrestrained Fatalities	4	(75%)	(50%)	(50%)
Serious Injury Crashes	14	3:00pm - 5:59pm	Friday • Saturday	June
		9:00pm - 11:59pm	(42%)	(21%)
		(58%)		



House District 62 Unrestrained-Related Crashes

Interstate Crashes

Non-interstate Crashes

● Fatal

● Fatal

⊕ Serious Injury

⊕ Serious Injury

The blue gradient represents the density of all unrestrained-related crashes.



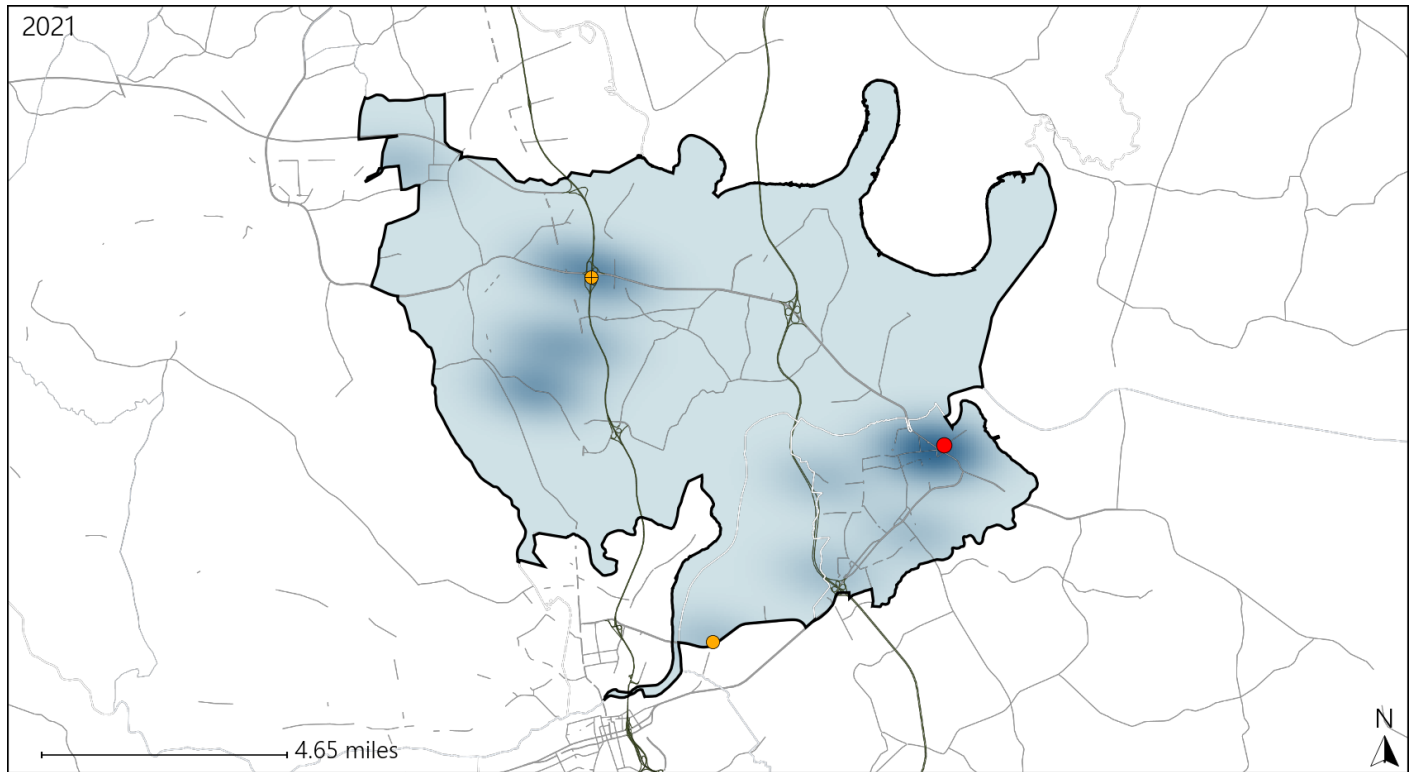
Available Crash Data - Calendar Year (CY)	CY 2018	CY 2019	CY 2020	CY 2021
Total Crashes	1710	1538	1376	1538
Fatalities	7	5	7	14
Injuries	1072	1146	997	1163
Unrestrained Fatalities	3	2	5	4
Percent of Unrestrained Fatalities to Total Fatalities	43%	40%	71%	29%
Unrestrained Injuries	67	70	67	63
Percent of Unrestrained Injuries to Total Injuries	6%	6%	7%	5%

Report of Crashes for January 1st - December 31st, 2021

Virginia House District 62 Pedestrian Crash Statistics

Report Generated April, 2022

	Count	Highest Time Period(s)	Highest Day(s)	Highest Month(s)
Fatal Crashes	1	3:00pm - 5:59pm	Thursday	July
Pedestrian Fatalities	1	(100%)	(100%)	(100%)
Serious Injury Crashes	2	3:00pm - 5:59pm 6:00am - 8:59am	Monday - Saturday	September
		(100%)	(100%)	(100%)



House District 62 Pedestrian-Related Crashes

Interstate Crashes

Non-interstate Crashes

● Fatal

● Fatal

⊕ Serious Injury

⊕ Serious Injury

The blue gradient represents the density of all pedestrian-related crashes.

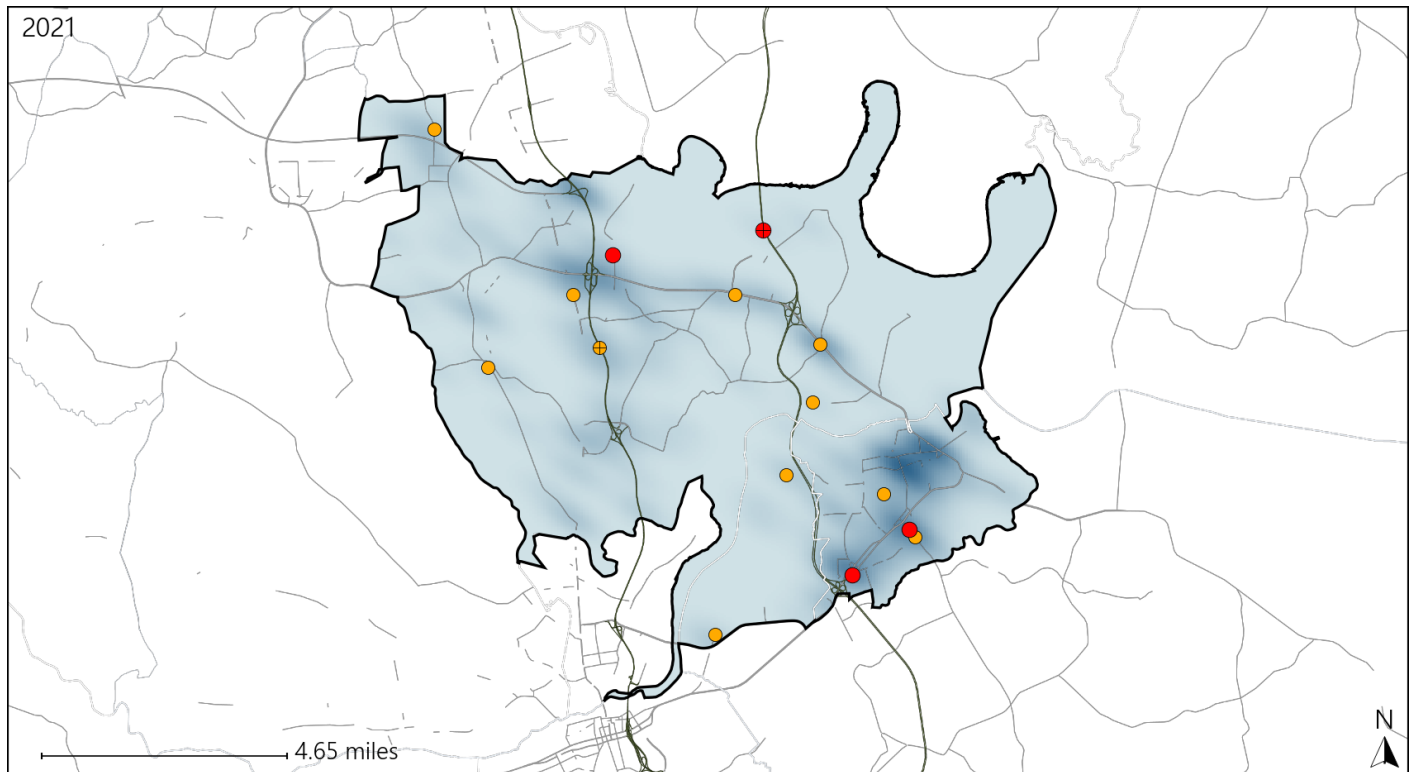


Available Crash Data - Calendar Year (CY)	CY 2018	CY 2019	CY 2020	CY 2021
Total Crashes	1710	1538	1376	1538
Fatal Crashes	7	5	6	13
Injury Crashes	649	623	558	633
Pedestrian-Related Fatal Crashes	3	1	1	1
Percent of Pedestrian-Related Fatal Crashes to Total Fatal Crashes	43%	20%	17%	8%
Pedestrian-Related Injury Crashes	19	10	9	15
Percent of Pedestrian-Related Injury Crashes to Total Injury Crashes	3%	2%	2%	2%

Virginia House District 62 Distracted Driving Crash Statistics

Report Generated April, 2022

	Count	Highest Time Period(s)	Highest Day(s)	Highest Month(s)
Fatal Crashes	4	3:00am - 5:59am	Friday • Saturday	April • December
Resulting Fatalities	5	3:00pm - 5:59pm (50%)	(50%)	(50%)
Serious Injury Crashes	11	3:00pm - 5:59pm Noon - 2:59pm (54%)	Tuesday (27%)	February • January (36%)



House District 62 Distracted Driving-Related Crashes

Interstate Crashes

Non-interstate Crashes

● Fatal

● Fatal

⊕ Serious Injury

⊕ Serious Injury

The blue gradient represents the density of all distracted driving-related crashes.



Available Crash Data - Calendar Year (CY)	CY 2018	CY 2019	CY 2020	CY 2021
Total Crashes	1710	1538	1376	1538
Fatal Crashes	7	5	6	13
Injury Crashes	649	623	558	633
Distracted Driving-Related Fatal Crashes	0	0	1	4
Percent of Distracted Driving-Related Fatal Crashes to Total Fatal Crashes	0%	0%	17%	31%
Distracted Driving-Related Injury Crashes	105	111	104	110
Percent of Distracted Driving-Related Injury Crashes to Total Injury Crashes	16%	18%	19%	17%