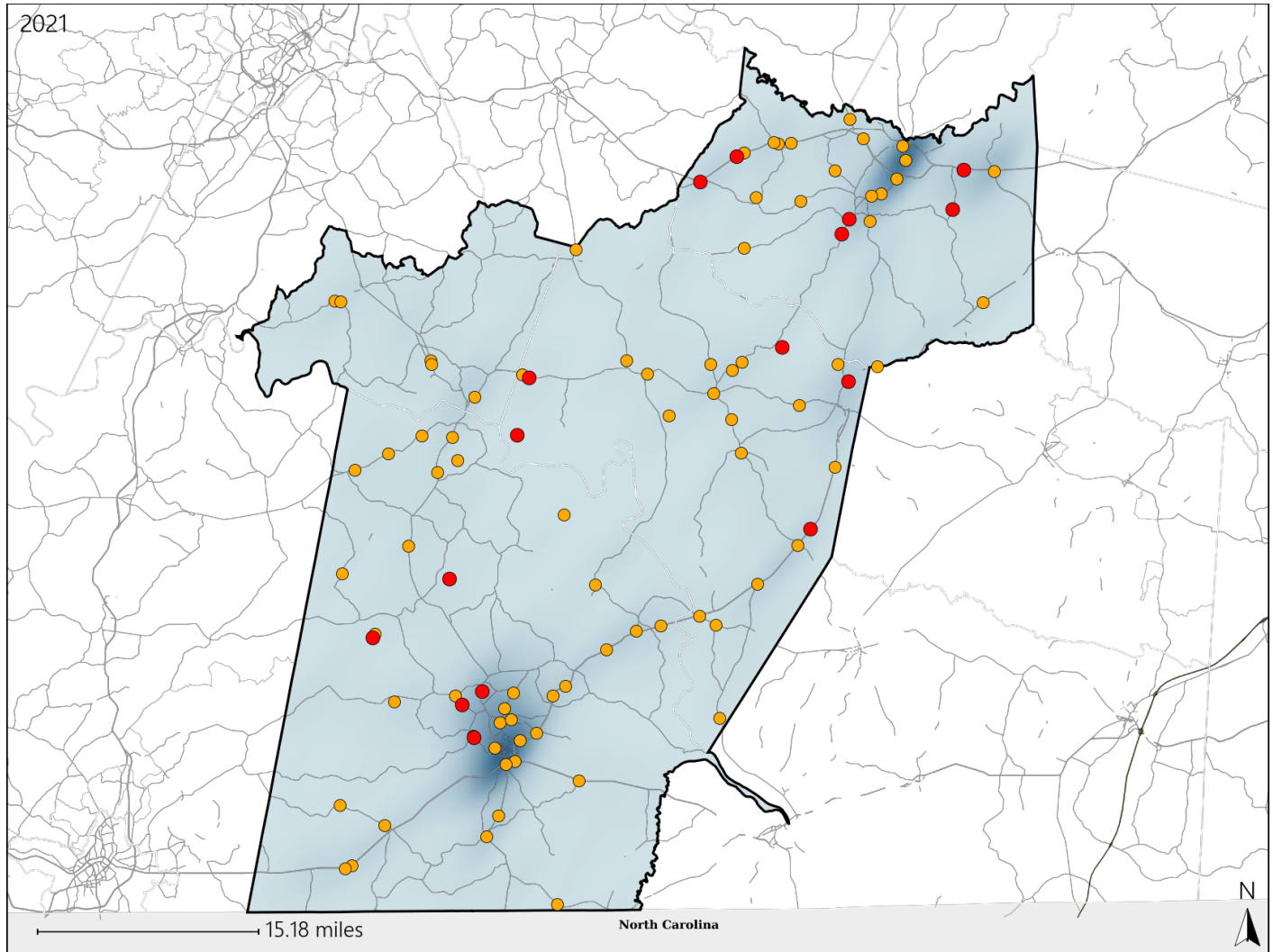


# Virginia House District 60 Crash Statistics

Report Generated April, 2022

	Count	Highest Time Period(s)	Highest Day(s)	Highest Month(s)
<b>Fatal Crashes</b>	<b>16</b>	<b>3:00pm - 5:59pm</b>	<b>Friday</b>	<b>October</b>
<b>Resulting Fatalities</b>	<b>17</b>	<b>(31%)</b>	<b>(31%)</b>	<b>(25%)</b>
<b>Serious Injury Crashes</b>	<b>81</b>	<b>3:00pm - 5:59pm</b>	<b>Friday</b>	<b>June</b>
		<b>(26%)</b>	<b>(23%)</b>	<b>(12%)</b>



## House District 60 Crashes

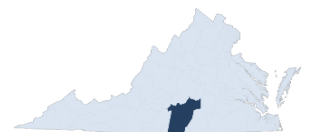
Interstate Crashes

- Fatal
- Serious Injury

Non-interstate Crashes

- Fatal
- Serious Injury

The blue gradient represents the density of all crashes.

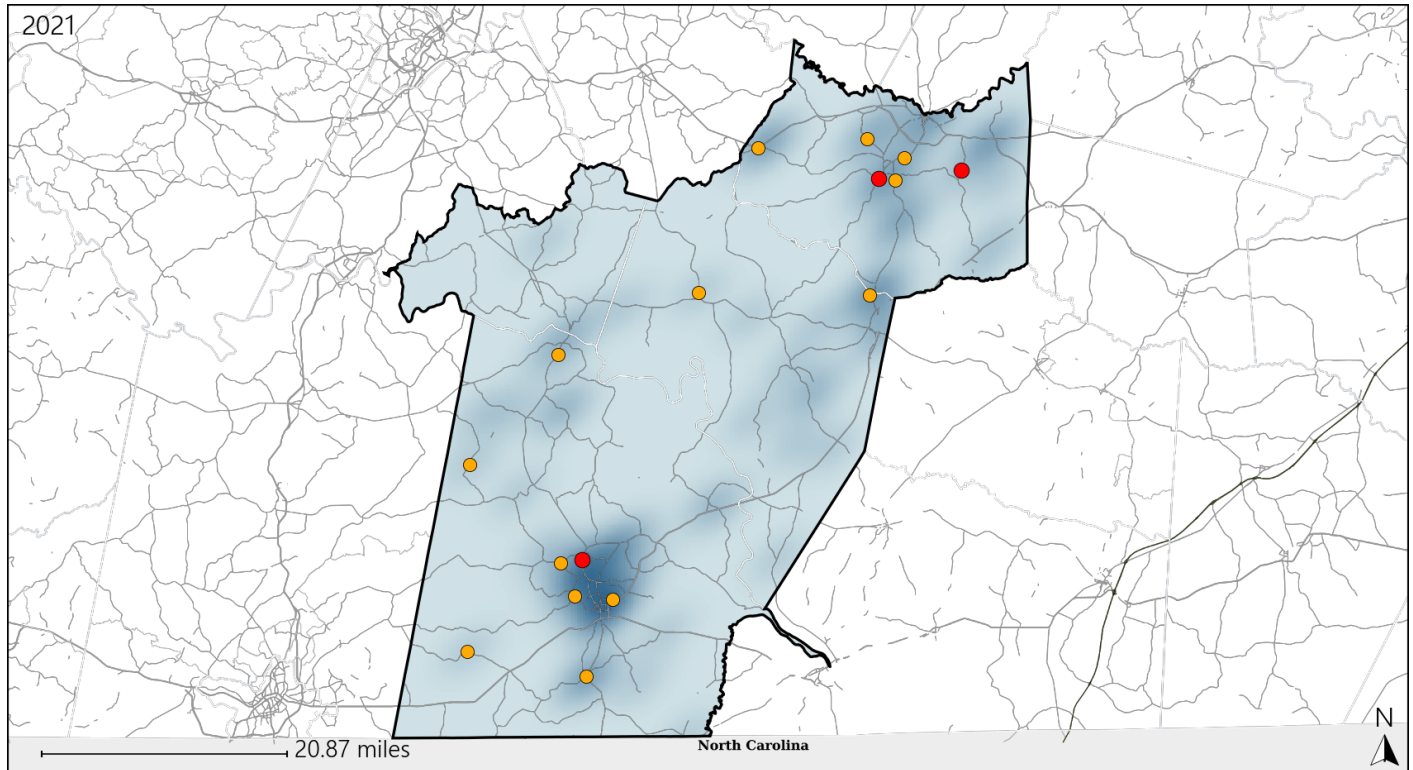


Available Crash Data - Calendar Year (CY)	CY 2018	CY 2019	CY 2020	CY 2021
Total Crashes	1202	1076	969	1064
Fatal Crashes	13	20	13	16
Injury Crashes	408	365	306	307

# Virginia House District 60 Alcohol Crash Statistics

Report Generated April, 2022

	Count	Highest Time Period(s)	Highest Day(s)	Highest Month(s)
<b>Fatal Crashes</b>	<b>3</b>	3:00pm - 5:59pm	Friday	January
<b>Resulting Fatalities</b>	<b>3</b>	6:00am - 8:59am (66%)	(67%)	(67%)
<b>Serious Injury Crashes</b>	<b>13</b>	9:00pm - 11:59pm Midnight - 2:59am (46%)	Friday (46%)	March (23%)



## House District 60 Alcohol-Related Crashes

Interstate Crashes

Non-interstate Crashes

● Fatal

● Fatal

⊕ Serious Injury

⊕ Serious Injury

The blue gradient represents the density of all alcohol-related crashes.

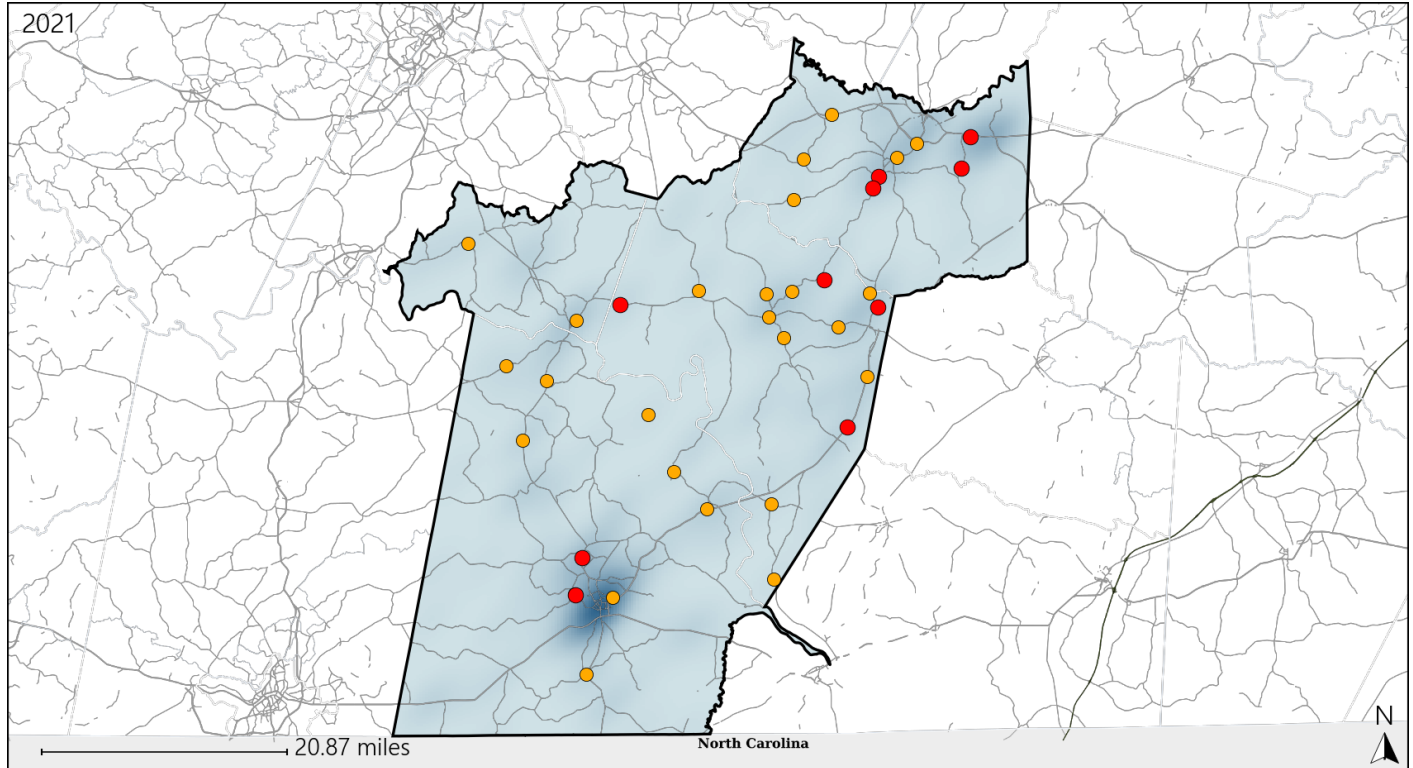


Available Crash Data - Calendar Year (CY)	CY 2018	CY 2019	CY 2020	CY 2021
Total Crashes	1202	1076	969	1064
Fatal Crashes	13	20	13	16
Injury Crashes	408	365	306	307
Alcohol-Related Fatal Crashes	7	9	5	3
Percent of Alcohol-Related Fatal Crashes to Total Fatal Crashes	54%	45%	38%	19%
Alcohol-Related Injury Crashes	25	26	42	28
Percent of Alcohol-Related Injury Crashes to Total Injury Crashes	6%	7%	14%	9%

# Virginia House District 60 Speed Crash Statistics

Report Generated April, 2022

	Count	Highest Time Period(s)	Highest Day(s)	Highest Month(s)
<b>Fatal Crashes</b>	<b>10</b>	<b>3:00pm - 5:59pm</b>	<b>Friday</b>	<b>August + January</b>
<b>Resulting Fatalities</b>	<b>10</b>	<b>(30%)</b>	<b>(40%)</b>	<b>(40%)</b>
<b>Serious Injury Crashes</b>	<b>27</b>	<b>3:00pm - 5:59pm</b>	<b>Saturday</b>	<b>April + August</b>
		<b>(30%)</b>	<b>(26%)</b>	<b>(22%)</b>



## House District 60 Speed-Related Crashes

Interstate Crashes

Non-interstate Crashes

- Fatal
- Serious Injury

- Fatal
- Serious Injury

The blue gradient represents the density of all speed-related crashes.

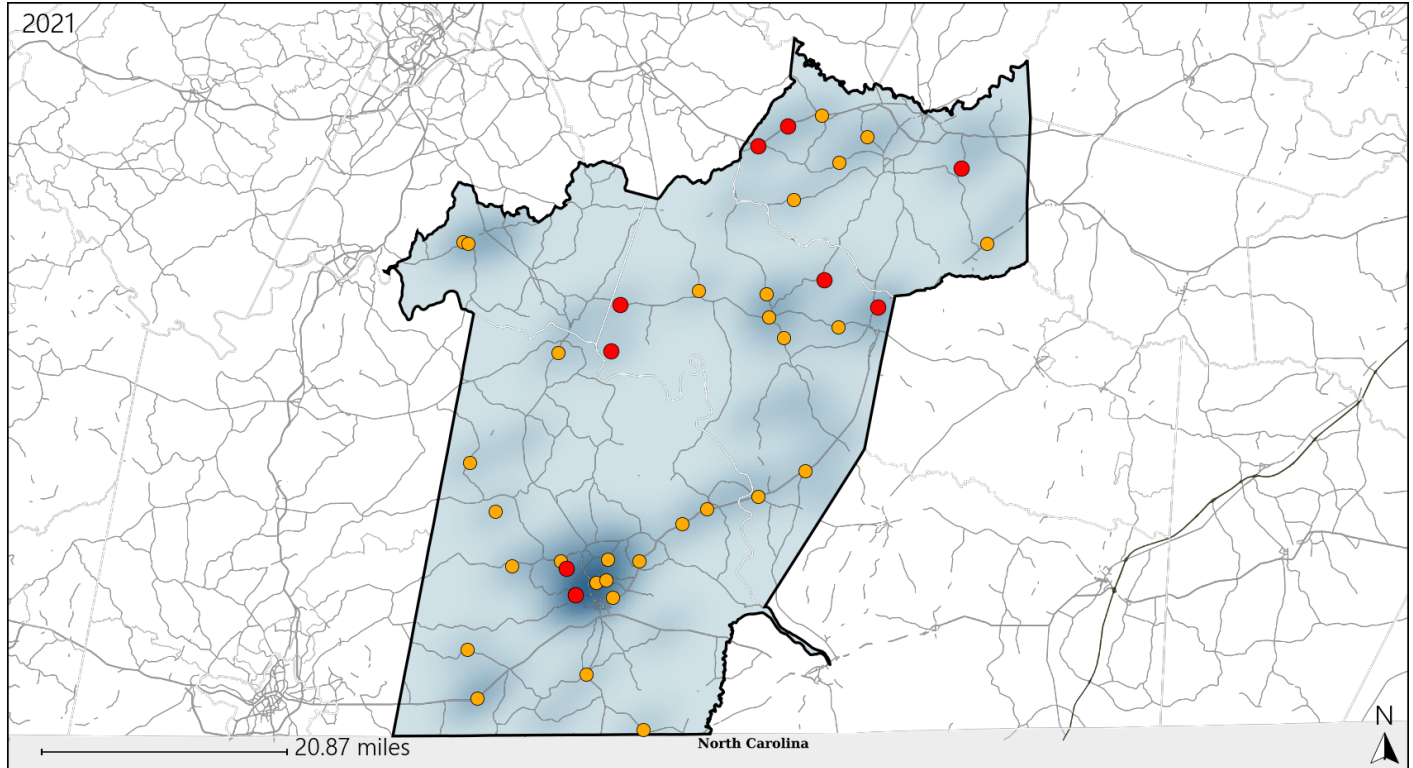


Available Crash Data - Calendar Year (CY)	CY 2018	CY 2019	CY 2020	CY 2021
Total Crashes	1202	1076	969	1064
Fatal Crashes	13	20	13	16
Injury Crashes	408	365	306	307
Speed-Related Fatal Crashes	7	10	4	10
Percent of Speed-Related Fatal Crashes to Total Fatal Crashes	54%	50%	31%	63%
Speed-Related Injury Crashes	103	91	74	87
Percent of Speed-Related Injury Crashes to Total Injury Crashes	25%	25%	24%	28%

# Virginia House District 60 Unrestrained Crash Statistics

Report Generated April, 2022

	Count	Highest Time Period(s)	Highest Day(s)	Highest Month(s)
<b>Fatal Crashes</b>	<b>9</b>	<b>3:00pm - 5:59pm</b>	<b>Friday • Monday</b>	<b>October</b>
<b>Unrestrained Fatalities</b>	<b>9</b>	<b>(44%)</b>	<b>(66%)</b>	<b>(33%)</b>
<b>Serious Injury Crashes</b>	<b>31</b>	<b>3:00pm - 5:59pm</b>	<b>Friday</b>	<b>July</b>
		<b>(23%)</b>	<b>(32%)</b>	<b>(16%)</b>



## House District 60 Unrestrained-Related Crashes

Interstate Crashes

Non-interstate Crashes

● Fatal

● Fatal

● Serious Injury

● Serious Injury

The blue gradient represents the density of all unrestrained-related crashes.



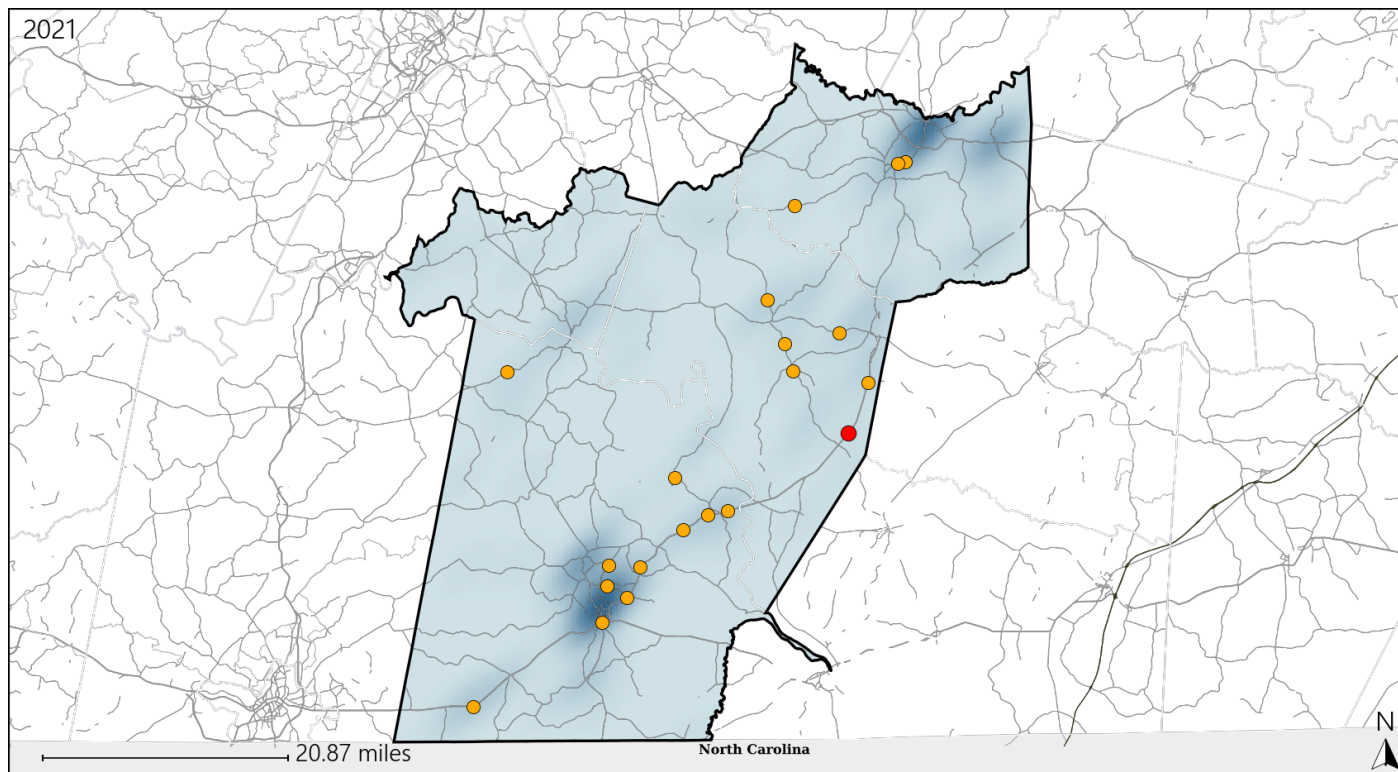
Available Crash Data - Calendar Year (CY)	CY 2018	CY 2019	CY 2020	CY 2021
Total Crashes	1202	1076	969	1064
Fatalities	13	21	13	17
Injuries	566	552	437	451
Unrestrained Fatalities	6	12	7	9
Percent of Unrestrained Fatalities to Total Fatalities	46%	57%	54%	53%
Unrestrained Injuries	56	63	53	78
Percent of Unrestrained Injuries to Total Injuries	10%	11%	12%	17%



# Virginia House District 60 Distracted Driving Crash Statistics

Report Generated April, 2022

	Count	Highest Time Period(s)	Highest Day(s)	Highest Month(s)
<b>Fatal Crashes</b>	<b>1</b>	Noon - 2:59pm (100%)	Wednesday (100%)	August (100%)
<b>Resulting Fatalities</b>	<b>1</b>			
<b>Serious Injury Crashes</b>	<b>19</b>	9:00am - 11:59am (32%)	Saturday • Thursday (52%)	February (16%)



## House District 60 Distracted Driving-Related Crashes

Interstate Crashes

Non-interstate Crashes

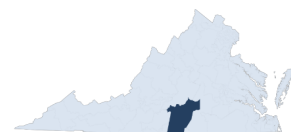
● Fatal

● Fatal

● Serious Injury

● Serious Injury

The blue gradient represents the density of all distracted driving-related crashes.



Available Crash Data - Calendar Year (CY)	CY 2018	CY 2019	CY 2020	CY 2021
Total Crashes	1202	1076	969	1064
Fatal Crashes	13	20	13	16
Injury Crashes	408	365	306	307
Distracted Driving-Related Fatal Crashes	0	3	3	1
Percent of Distracted Driving-Related Fatal Crashes to Total Fatal Crashes	0%	15%	23%	6%
Distracted Driving-Related Injury Crashes	78	59	55	54
Percent of Distracted Driving-Related Injury Crashes to Total Injury Crashes	19%	16%	18%	18%