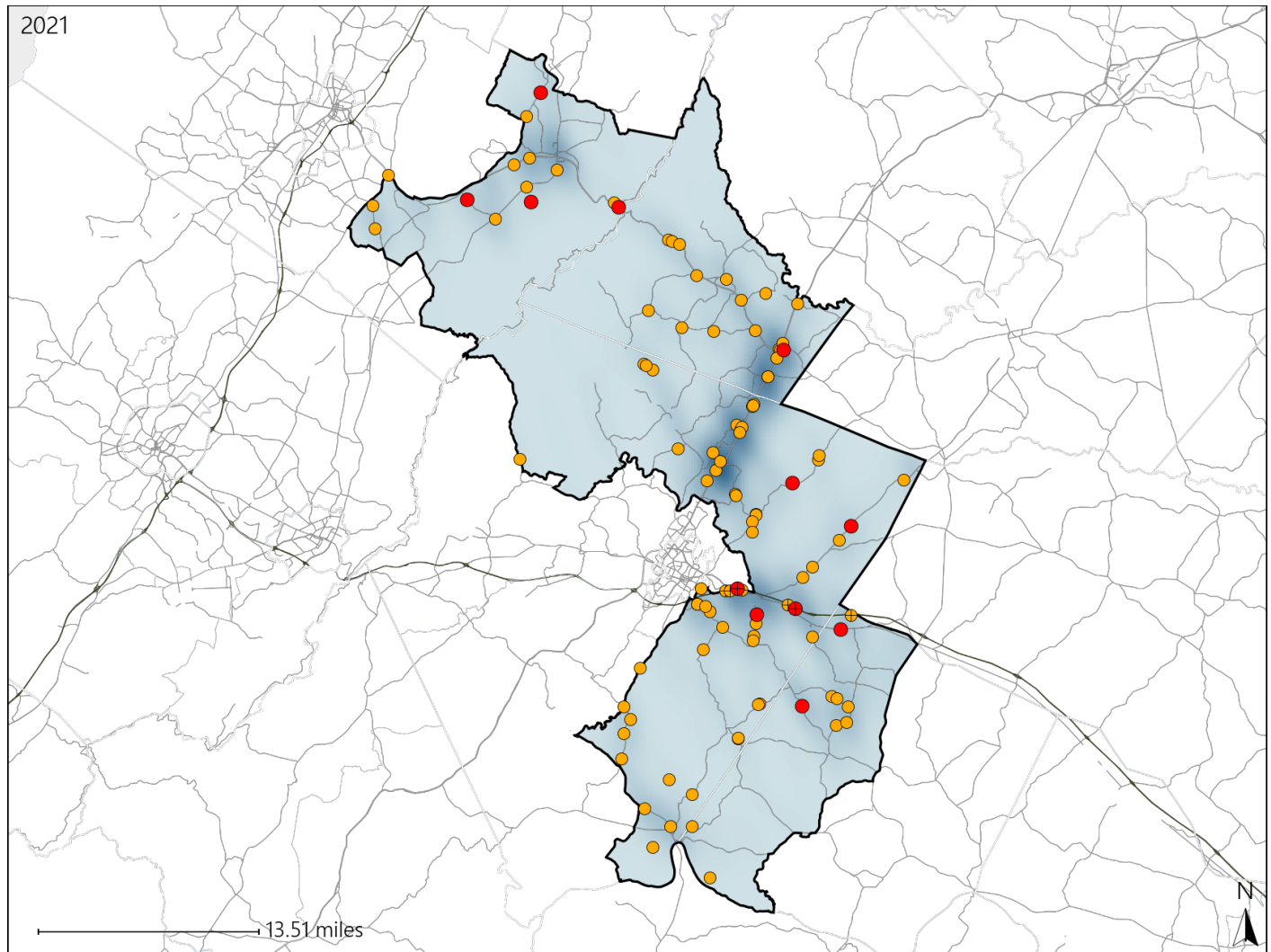


# Virginia House District 58 Crash Statistics

Report Generated April, 2022

	Count	Highest Time Period(s)	Highest Day(s)	Highest Month(s)
<b>Fatal Crashes</b>	<b>12</b>	<b>3:00pm - 5:59pm</b>	<b>Monday • Saturday</b>	<b>November</b>
<b>Resulting Fatalities</b>	<b>12</b>	(33%)	(50%)	(25%)
<b>Serious Injury Crashes</b>	<b>93</b>	<b>3:00pm - 5:59pm</b>	<b>Thursday</b>	<b>July</b>
		(24%)	(28%)	(14%)



## House District 58 Crashes

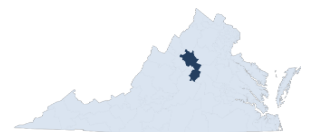
Interstate Crashes

- Fatal
- Serious Injury

Non-interstate Crashes

- Fatal
- Serious Injury

The blue gradient represents the density of all crashes.



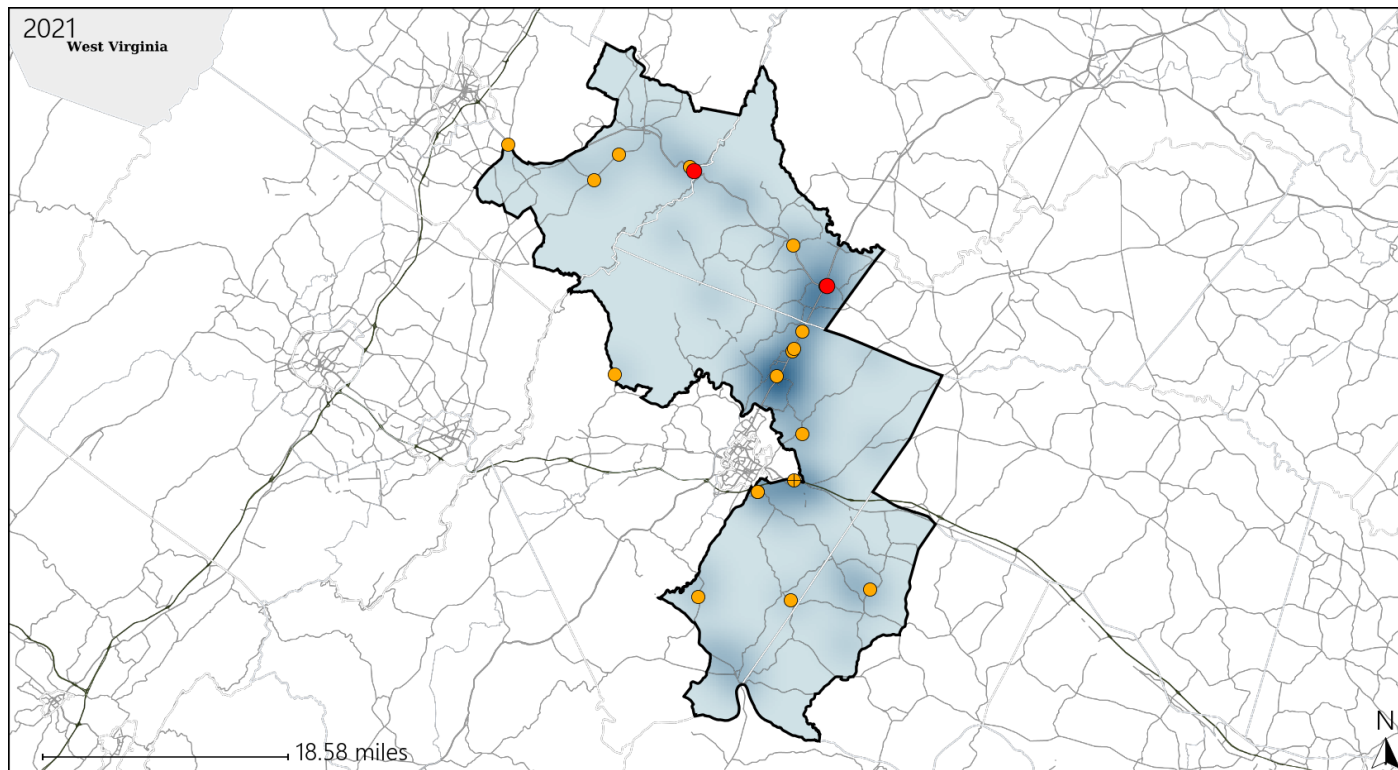
Available Crash Data - Calendar Year (CY)	CY 2018	CY 2019	CY 2020	CY 2021
Total Crashes	1409	1431	1187	1256
Fatal Crashes	11	12	16	12
Injury Crashes	499	483	463	525

Report of Crashes for January 1<sup>st</sup> - December 31<sup>st</sup>, 2021

# Virginia House District 58 Alcohol Crash Statistics

Report Generated April, 2022

	Count	Highest Time Period(s)	Highest Day(s)	Highest Month(s)
<b>Fatal Crashes</b>	<b>2</b>	3:00pm - 5:59pm	Saturday	April + March
<b>Resulting Fatalities</b>	<b>2</b>	6:00am - 8:59am (100%)	(100%)	(100%)
<b>Serious Injury Crashes</b>	<b>18</b>	9:00pm - 11:59pm (39%)	Saturday (28%)	August (22%)



## House District 58 Alcohol-Related Crashes

Interstate Crashes

Non-interstate Crashes

● Fatal

● Fatal

● Serious Injury

● Serious Injury

The blue gradient represents the density of all alcohol-related crashes.

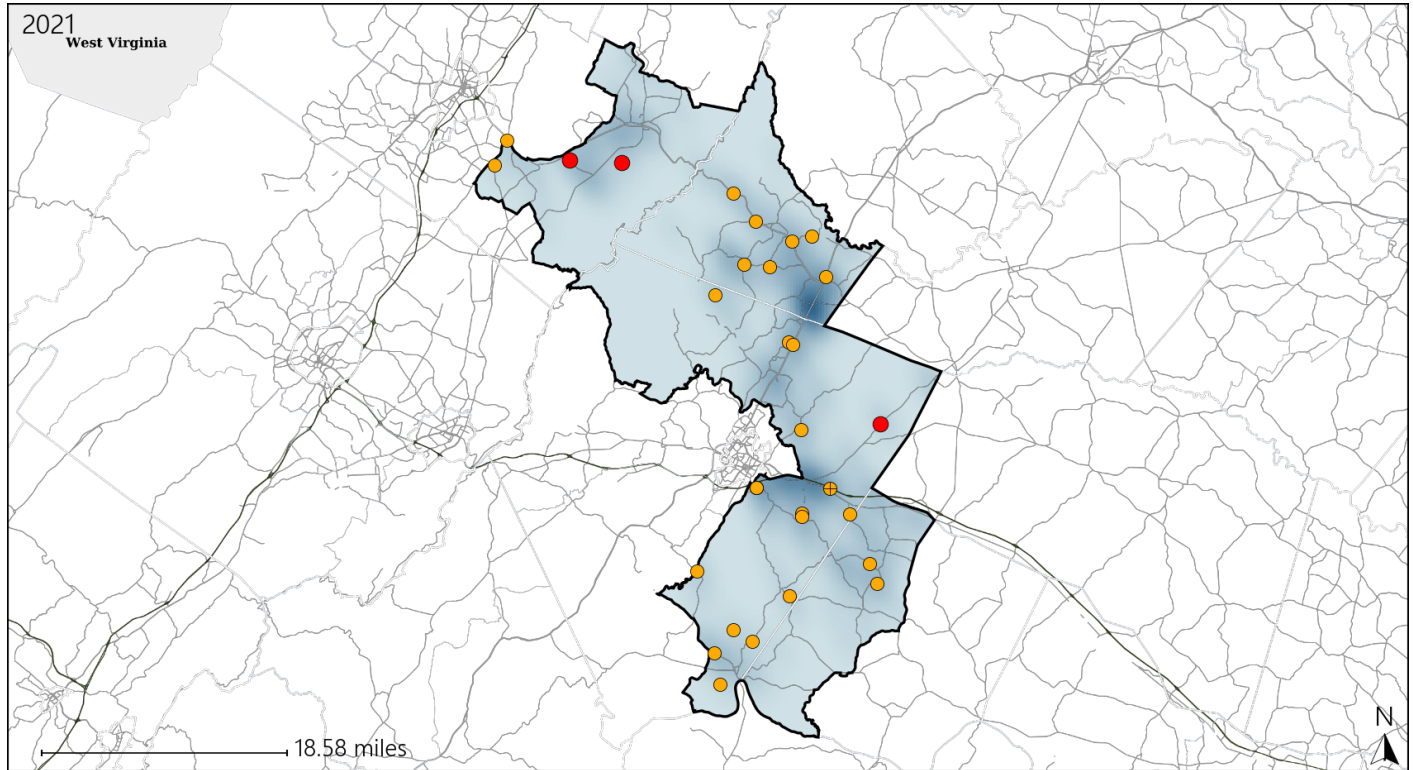


Available Crash Data - Calendar Year (CY)	CY 2018	CY 2019	CY 2020	CY 2021
Total Crashes	1409	1431	1187	1256
Fatal Crashes	11	12	16	12
Injury Crashes	499	483	463	525
Alcohol-Related Fatal Crashes	3	3	4	2
Percent of Alcohol-Related Fatal Crashes to Total Fatal Crashes	27%	25%	25%	17%
Alcohol-Related Injury Crashes	49	46	39	47
Percent of Alcohol-Related Injury Crashes to Total Injury Crashes	10%	10%	8%	9%

# Virginia House District 58 Speed Crash Statistics

Report Generated April, 2022

	Count	Highest Time Period(s)	Highest Day(s)	Highest Month(s)
<b>Fatal Crashes</b>	<b>3</b>	6:00am - 8:59am	Monday • Thursday	May • November
<b>Resulting Fatalities</b>	<b>3</b>	6:00pm - 8:59pm (66%)	(66%)	(66%)
<b>Serious Injury Crashes</b>	<b>27</b>	9:00pm - 11:59pm (26%)	Thursday (30%)	June (22%)



## House District 58 Speed-Related Crashes

Interstate Crashes

Non-interstate Crashes

- Fatal
- Serious Injury

- Fatal
- Serious Injury

The blue gradient represents the density of all speed-related crashes.

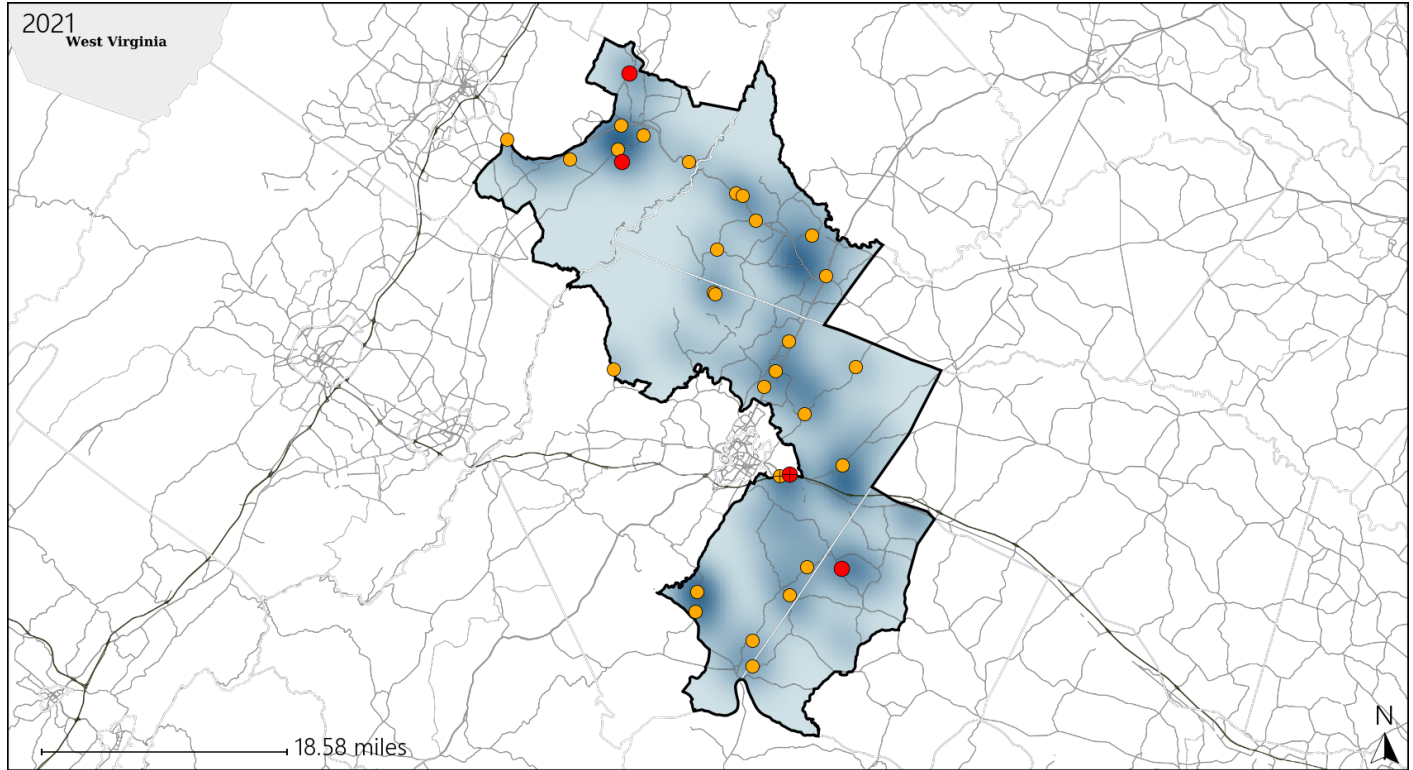


Available Crash Data - Calendar Year (CY)	CY 2018	CY 2019	CY 2020	CY 2021
Total Crashes	1409	1431	1187	1256
Fatal Crashes	11	12	16	12
Injury Crashes	499	483	463	525
Speed-Related Fatal Crashes	5	5	6	3
Percent of Speed-Related Fatal Crashes to Total Fatal Crashes	45%	42%	38%	25%
Speed-Related Injury Crashes	99	93	105	105
Percent of Speed-Related Injury Crashes to Total Injury Crashes	20%	19%	23%	20%

# Virginia House District 58 Unrestrained Crash Statistics

Report Generated April, 2022

	Count	Highest Time Period(s)	Highest Day(s)	Highest Month(s)
<b>Fatal Crashes</b>	<b>4</b>	<b>Midnight - 2:59am</b>	<b>Monday</b>	<b>October</b>
<b>Unrestrained Fatalities</b>	<b>4</b>	<b>(50%)</b>	<b>(50%)</b>	<b>(50%)</b>
<b>Serious Injury Crashes</b>	<b>28</b>	<b>9:00pm - 11:59pm</b>	<b>Thursday</b>	<b>July</b>
		<b>(29%)</b>	<b>(25%)</b>	<b>(21%)</b>



## House District 58 Unrestrained-Related Crashes

Interstate Crashes

Non-interstate Crashes

- Fatal
- Serious Injury

- Fatal
- Serious Injury

The blue gradient represents the density of all unrestrained-related crashes.



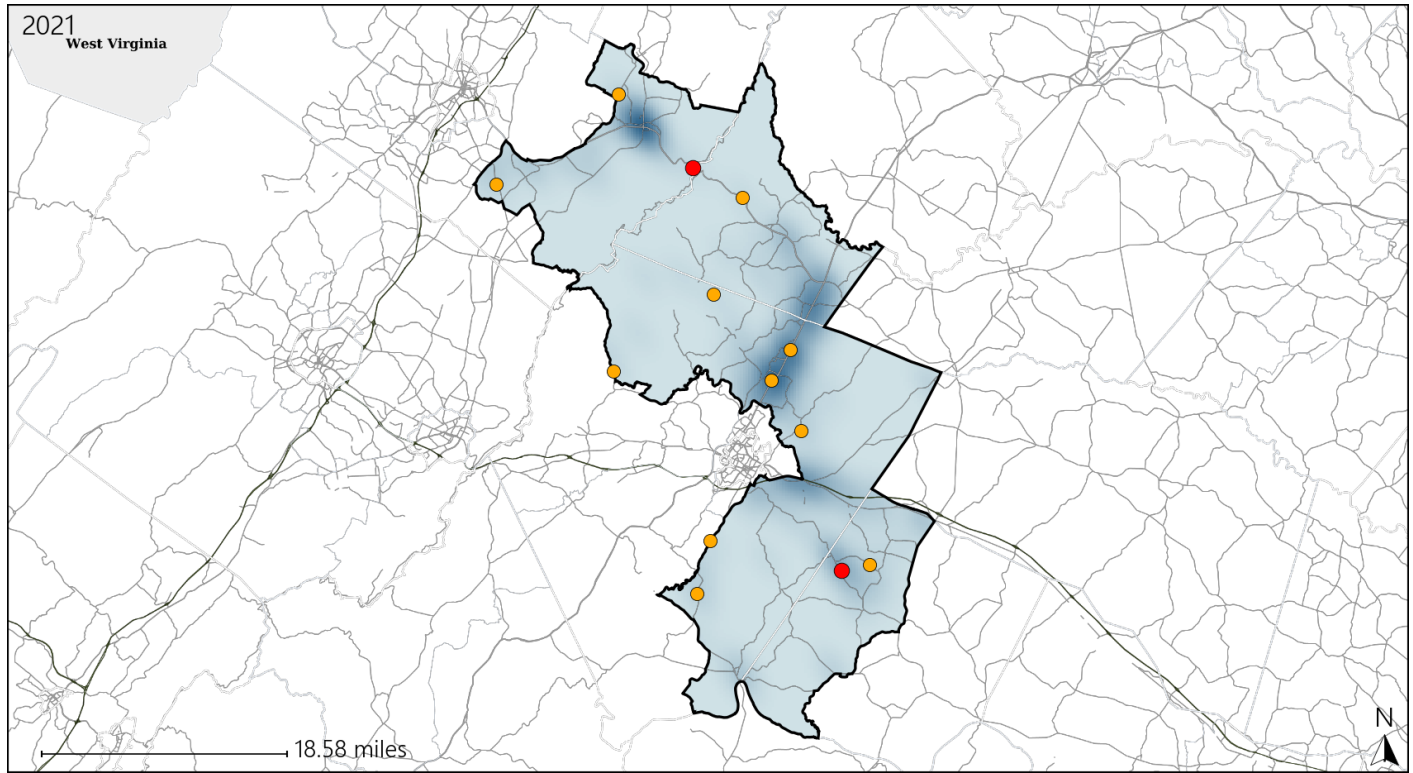
Available Crash Data - Calendar Year (CY)	CY 2018	CY 2019	CY 2020	CY 2021
Total Crashes	1409	1431	1187	1256
Fatalities	11	13	18	12
Injuries	691	679	667	765
Unrestrained Fatalities	4	7	8	4
Percent of Unrestrained Fatalities to Total Fatalities	36%	54%	44%	33%
Unrestrained Injuries	59	66	72	76
Percent of Unrestrained Injuries to Total Injuries	9%	10%	11%	10%



# Virginia House District 58 Distracted Driving Crash Statistics

Report Generated April, 2022

	Count	Highest Time Period(s)	Highest Day(s)	Highest Month(s)
<b>Fatal Crashes</b>	<b>2</b>	3:00pm - 5:59pm	Saturday	April • October
<b>Resulting Fatalities</b>	<b>2</b>	Midnight - 2:59am (100%)	(100%)	(100%)
<b>Serious Injury Crashes</b>	<b>11</b>	3:00pm - 5:59pm 6:00pm - 8:59pm (54%)	Thursday (36%)	July (27%)



## House District 58 Distracted Driving-Related Crashes

Interstate Crashes

Non-interstate Crashes

● Fatal

● Fatal

⊕ Serious Injury

⊕ Serious Injury

The blue gradient represents the density of all distracted driving-related crashes.



Available Crash Data - Calendar Year (CY)	CY 2018	CY 2019	CY 2020	CY 2021
Total Crashes	1409	1431	1187	1256
Fatal Crashes	11	12	16	12
Injury Crashes	499	483	463	525
Distracted Driving-Related Fatal Crashes	1	2	2	2
Percent of Distracted Driving-Related Fatal Crashes to Total Fatal Crashes	9%	17%	13%	17%
Distracted Driving-Related Injury Crashes	107	99	75	85
Percent of Distracted Driving-Related Injury Crashes to Total Injury Crashes	21%	20%	16%	16%