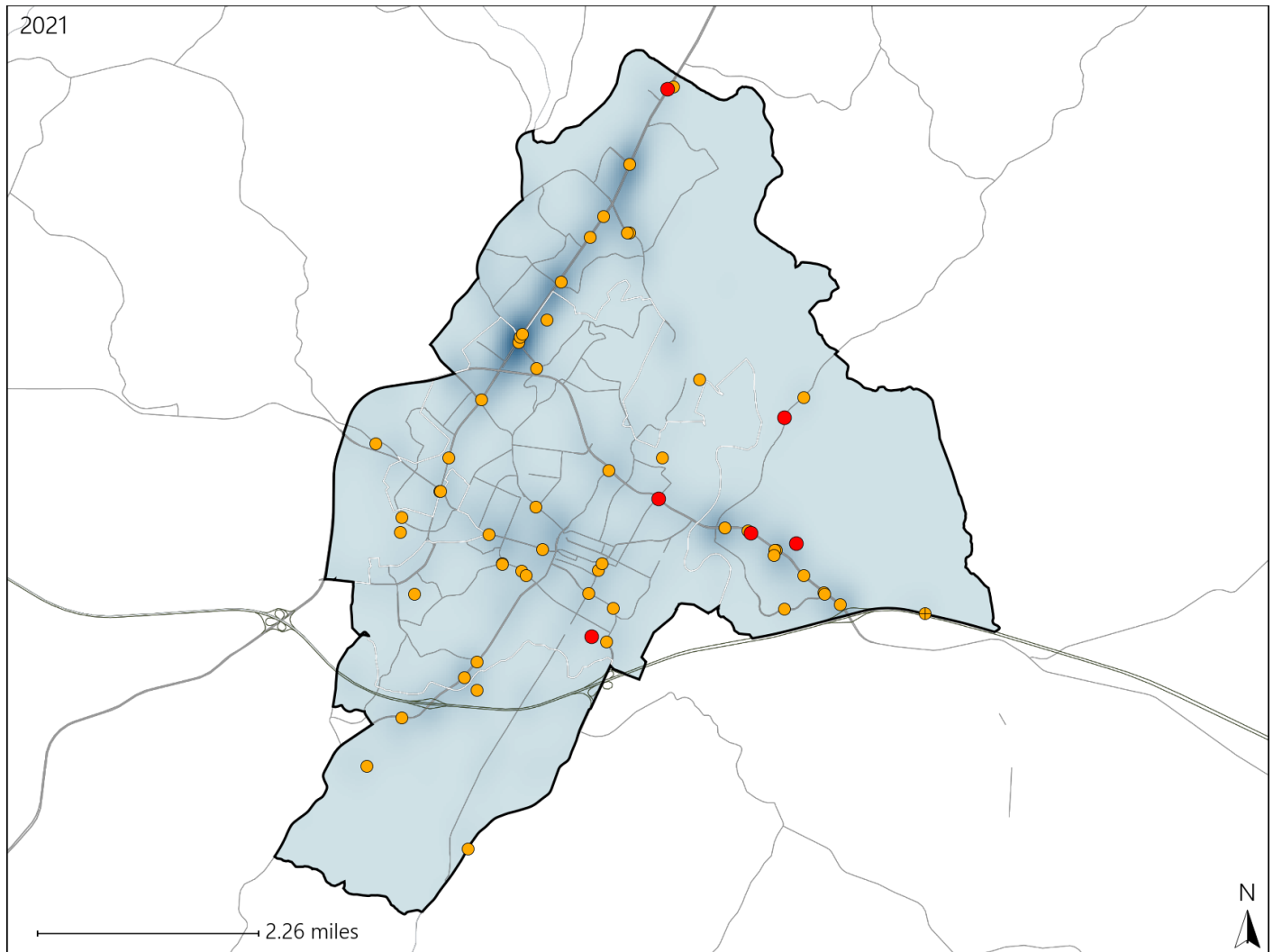


# Virginia House District 57 Crash Statistics

Report Generated April, 2022

	Count	Highest Time Period(s)	Highest Day(s)	Highest Month(s)
<b>Fatal Crashes</b>	<b>6</b>	Midnight - 2:59am	Monday	August + January
<b>Resulting Fatalities</b>	<b>7</b>	Noon - 2:59pm (66%)	(50%)	(34%)
<b>Serious Injury Crashes</b>	<b>53</b>	3:00pm - 5:59pm 6:00pm - 8:59pm (46%)	Friday (30%)	October (15%)



## House District 57 Crashes

Interstate Crashes

- Fatal
- Serious Injury

Non-interstate Crashes

- Fatal
- Serious Injury

The blue gradient represents the density of all crashes.



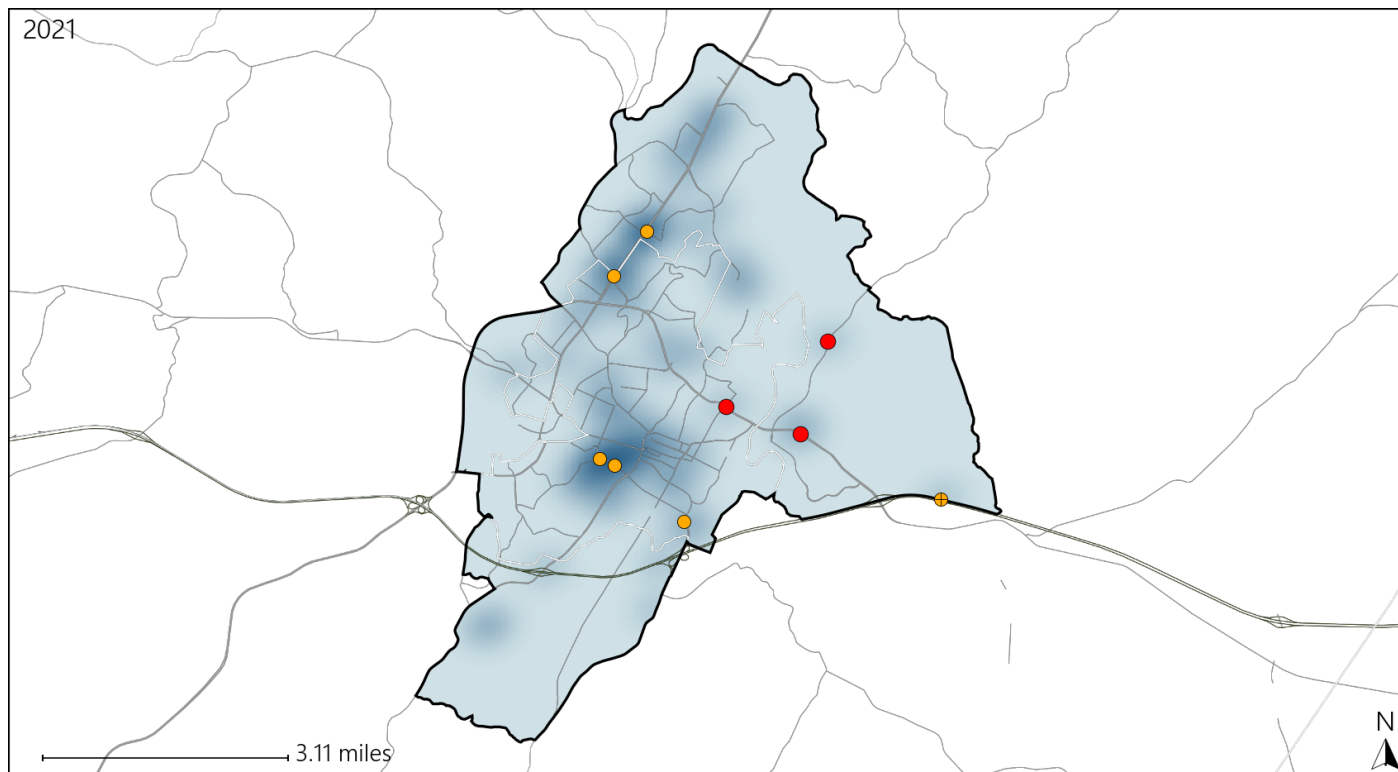
Available Crash Data - Calendar Year (CY)	CY 2018	CY 2019	CY 2020	CY 2021
Total Crashes	1275	1327	967	1090
Fatal Crashes	3	6	9	6
Injury Crashes	484	510	466	475

Report of Crashes for January 1<sup>st</sup> - December 31<sup>st</sup>, 2021

# Virginia House District 57 Alcohol Crash Statistics

Report Generated April, 2022

	Count	Highest Time Period(s)	Highest Day(s)	Highest Month(s)
<b>Fatal Crashes</b>	<b>3</b>	<b>Midnight - 2:59am</b>	<b>Monday • Thursday</b>	<b>January • May</b>
<b>Resulting Fatalities</b>	<b>3</b>	<b>(67%)</b>	<b>(66%)</b>	<b>(66%)</b>
<b>Serious Injury Crashes</b>	<b>6</b>	<b>9:00pm - 11:59pm</b>	<b>Friday • Saturday</b>	<b>November</b>
		<b>(50%)</b>	<b>(66%)</b>	<b>(33%)</b>



## House District 57 Alcohol-Related Crashes

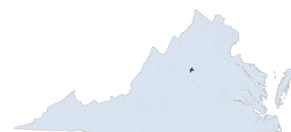
Interstate Crashes

Non-interstate Crashes

- Fatal
- Serious Injury

- Fatal
- Serious Injury

The blue gradient represents the density of all alcohol-related crashes.



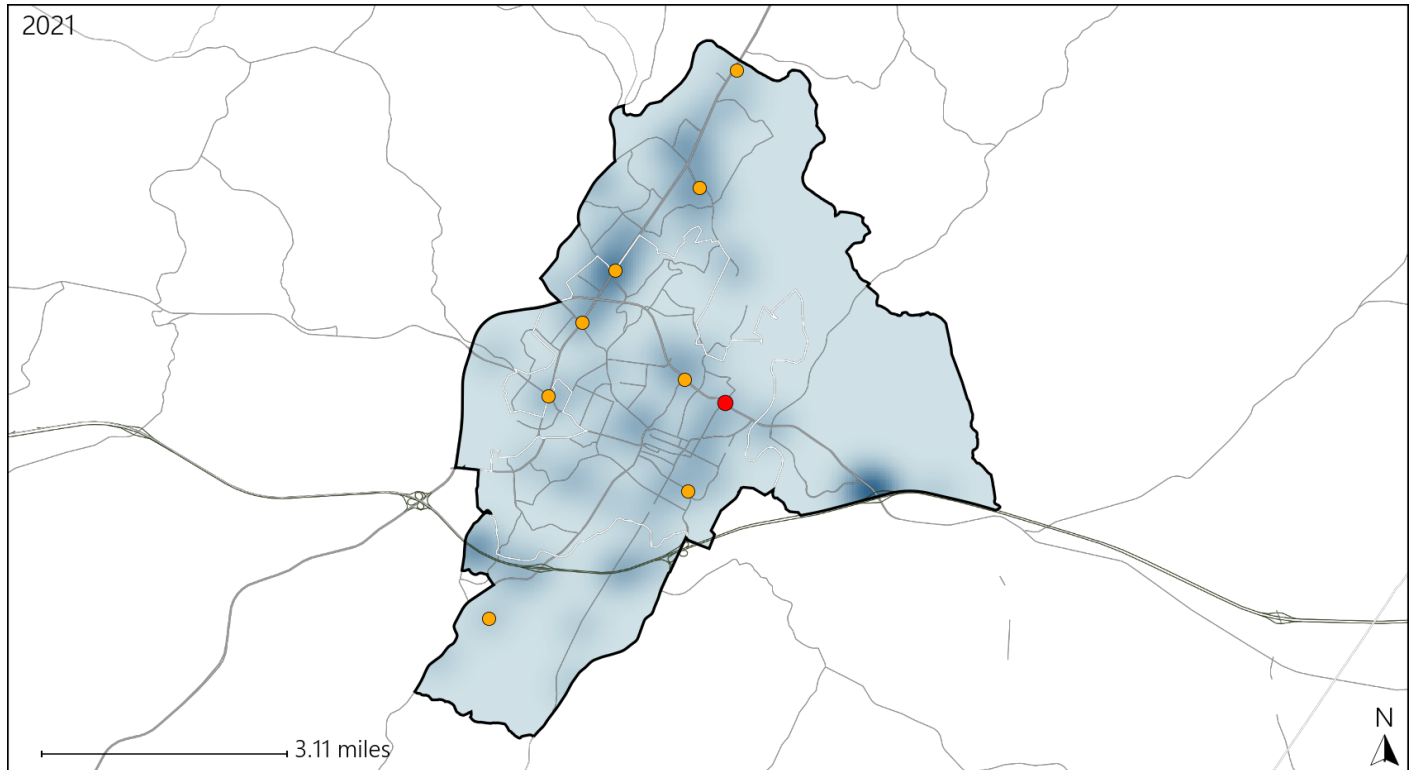
Available Crash Data - Calendar Year (CY)	CY 2018	CY 2019	CY 2020	CY 2021
Total Crashes	1275	1327	967	1090
Fatal Crashes	3	6	9	6
Injury Crashes	484	510	466	475
Alcohol-Related Fatal Crashes	0	3	3	3
Percent of Alcohol-Related Fatal Crashes to Total Fatal Crashes	0%	50%	33%	50%
Alcohol-Related Injury Crashes	31	33	45	33
Percent of Alcohol-Related Injury Crashes to Total Injury Crashes	6%	6%	10%	7%

Report of Crashes for January 1<sup>st</sup> - December 31<sup>st</sup>, 2021

# Virginia House District 57 Speed Crash Statistics

Report Generated April, 2022

	Count	Highest Time Period(s)	Highest Day(s)	Highest Month(s)
<b>Fatal Crashes</b>	<b>1</b>	<b>6:00pm - 8:59pm</b>	<b>Wednesday</b>	<b>January</b>
<b>Resulting Fatalities</b>	<b>1</b>	<b>(100%)</b>	<b>(100%)</b>	<b>(100%)</b>
<b>Serious Injury Crashes</b>	<b>8</b>	<b>6:00pm - 8:59pm</b>	<b>Sunday</b>	<b>October</b>
		<b>(38%)</b>	<b>(38%)</b>	<b>(38%)</b>



## House District 57 Speed-Related Crashes

Interstate Crashes

Non-interstate Crashes

● Fatal

● Fatal

● Serious Injury

● Serious Injury

The blue gradient represents the density of all speed-related crashes.



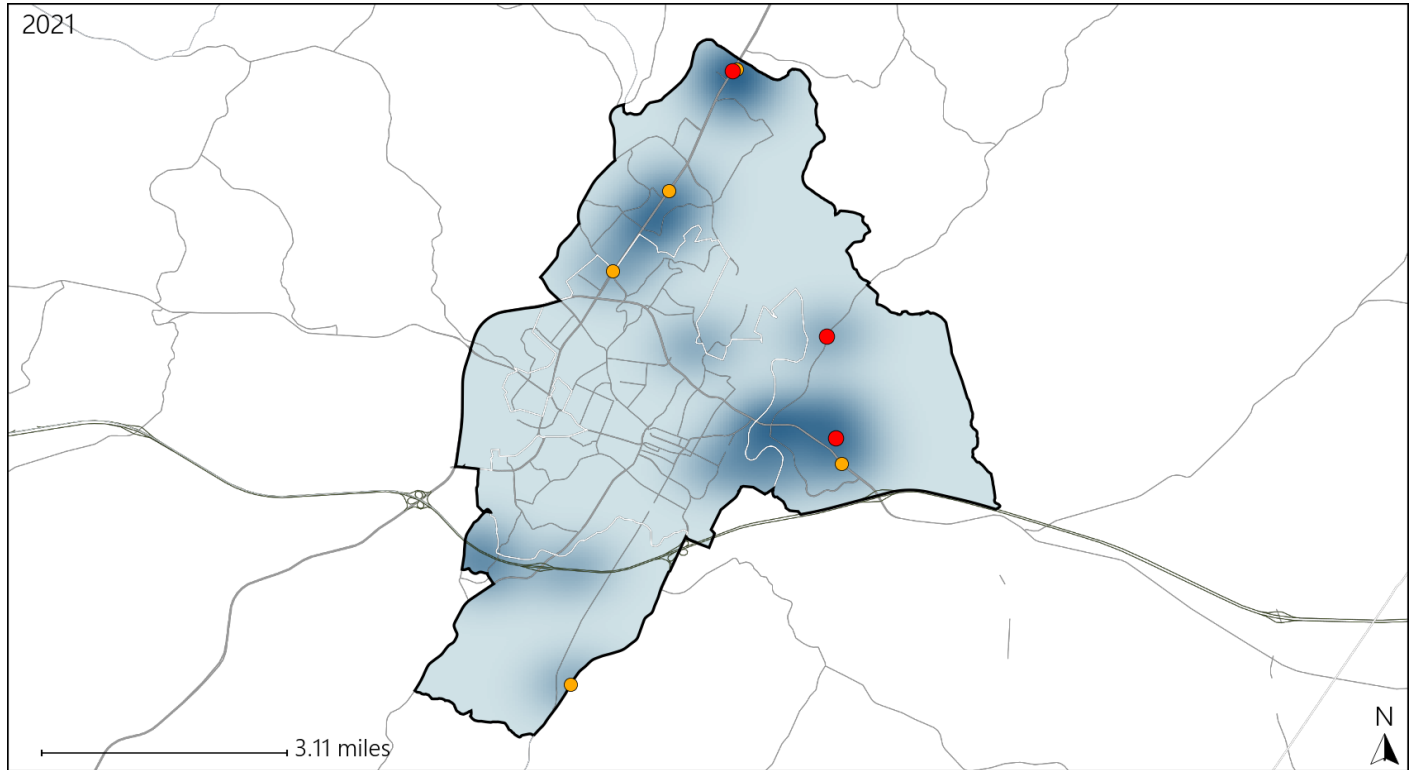
Available Crash Data - Calendar Year (CY)	CY 2018	CY 2019	CY 2020	CY 2021
Total Crashes	1275	1327	967	1090
Fatal Crashes	3	6	9	6
Injury Crashes	484	510	466	475
Speed-Related Fatal Crashes	2	2	3	1
Percent of Speed-Related Fatal Crashes to Total Fatal Crashes	67%	33%	33%	17%
Speed-Related Injury Crashes	48	53	55	40
Percent of Speed-Related Injury Crashes to Total Injury Crashes	10%	10%	12%	8%

Report of Crashes for January 1<sup>st</sup> - December 31<sup>st</sup>, 2021

# Virginia House District 57 Unrestrained Crash Statistics

Report Generated April, 2022

	Count	Highest Time Period(s)	Highest Day(s)	Highest Month(s)
<b>Fatal Crashes</b>	<b>3</b>	<b>3:00pm - 5:59pm</b>	<b>Friday • Monday</b>	<b>July • May</b>
<b>Unrestrained Fatalities</b>	<b>3</b>	<b>Midnight - 2:59am</b> (66%)	<b>(66%)</b>	<b>(66%)</b>
<b>Serious Injury Crashes</b>	<b>5</b>	<b>9:00pm - 11:59pm</b> (40%)	<b>Friday</b> (40%)	<b>March</b> (40%)



## House District 57 Unrestrained-Related Crashes

Interstate Crashes

- Fatal
- Serious Injury

Non-interstate Crashes

- Fatal
- Serious Injury

The blue gradient represents the density of all unrestrained-related crashes.

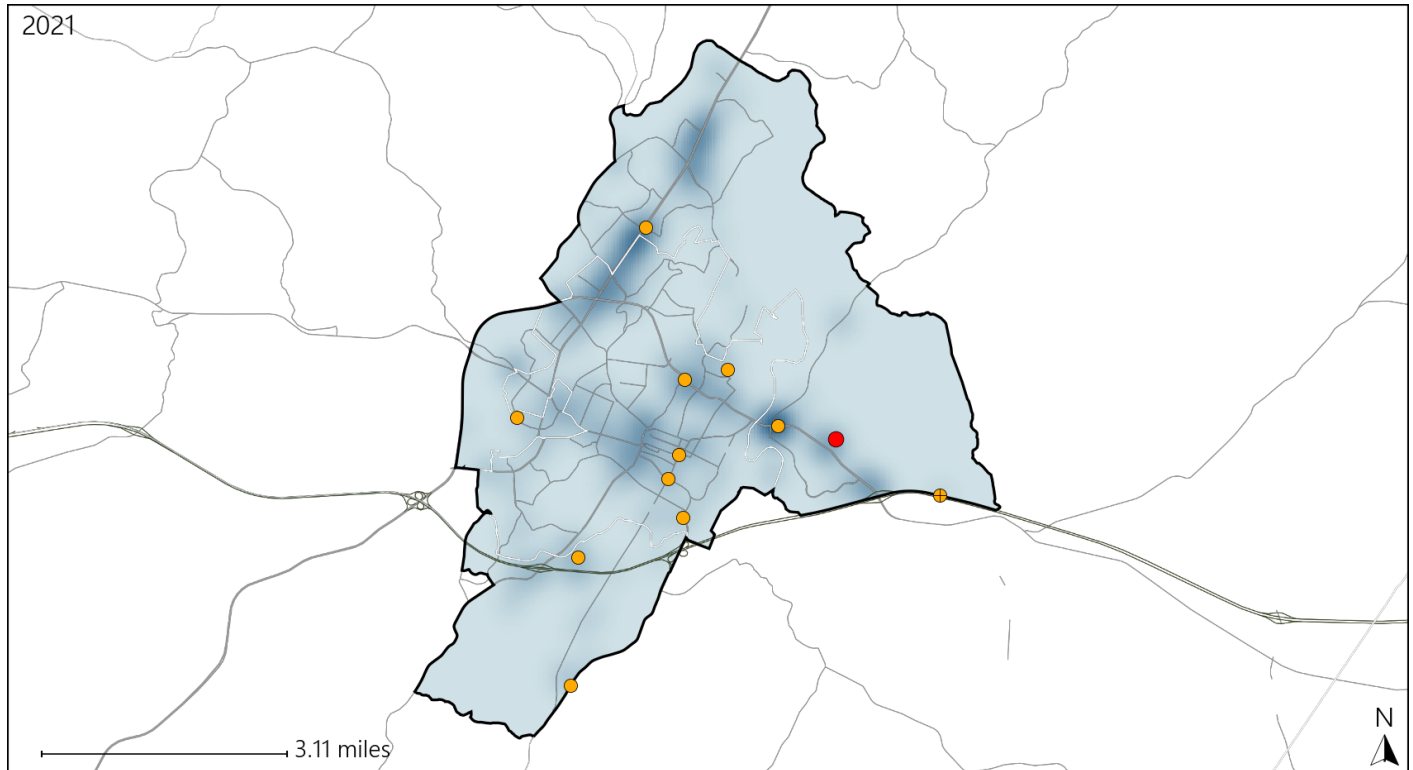


Available Crash Data - Calendar Year (CY)	CY 2018	CY 2019	CY 2020	CY 2021
Total Crashes	1275	1327	967	1090
Fatalities	3	6	10	7
Injuries	647	706	662	727
Unrestrained Fatalities	1	1	3	3
Percent of Unrestrained Fatalities to Total Fatalities	33%	17%	30%	43%
Unrestrained Injuries	20	32	33	18
Percent of Unrestrained Injuries to Total Injuries	3%	5%	5%	2%

# Virginia House District 57 Distracted Driving Crash Statistics

Report Generated April, 2022

	Count	Highest Time Period(s)	Highest Day(s)	Highest Month(s)
<b>Fatal Crashes</b>	<b>1</b>	Noon - 2:59pm	Monday	November
<b>Resulting Fatalities</b>	<b>1</b>	(100%)	(100%)	(100%)
<b>Serious Injury Crashes</b>	<b>11</b>	Noon - 2:59pm	Saturday • Tuesday	October
		(36%)	(54%)	(27%)



## House District 57 Distracted Driving-Related Crashes

Interstate Crashes

Non-interstate Crashes

- Fatal
- Serious Injury

- Fatal
- Serious Injury

The blue gradient represents the density of all distracted driving-related crashes.



Available Crash Data - Calendar Year (CY)	CY 2018	CY 2019	CY 2020	CY 2021
Total Crashes	1275	1327	967	1090
Fatal Crashes	3	6	9	6
Injury Crashes	484	510	466	475
Distracted Driving-Related Fatal Crashes	0	3	3	1
Percent of Distracted Driving-Related Fatal Crashes to Total Fatal Crashes	0%	50%	33%	17%
Distracted Driving-Related Injury Crashes	123	142	101	97
Percent of Distracted Driving-Related Injury Crashes to Total Injury Crashes	25%	28%	22%	20%