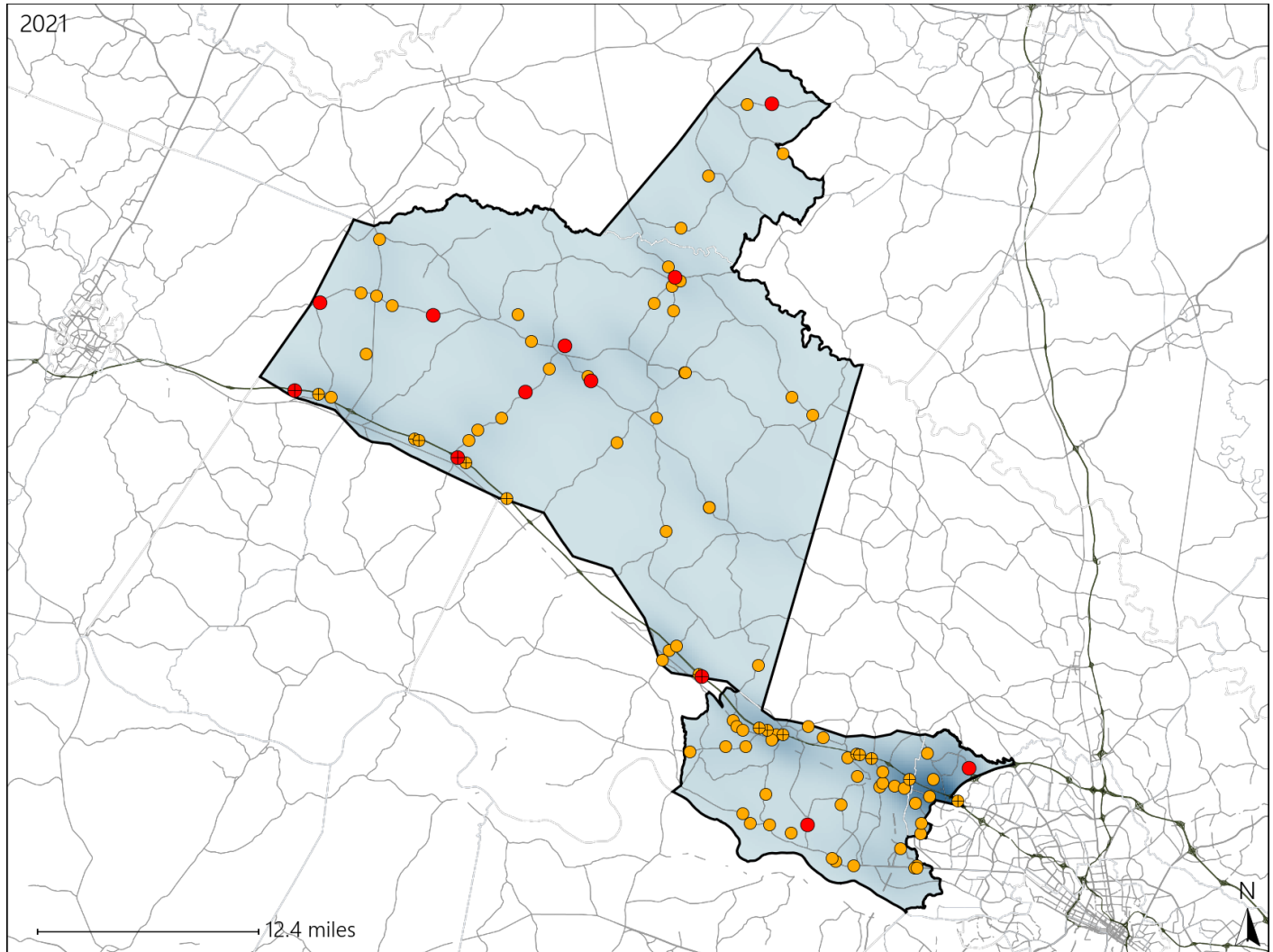


Virginia House District 56 Crash Statistics

Report Generated April, 2022

	Count	Highest Time Period(s)	Highest Day(s)	Highest Month(s)
Fatal Crashes	12	Noon - 2:59pm (25%)	Saturday (33%)	October (42%)
Resulting Fatalities	13			
Serious Injury Crashes	86	9:00am - 11:59am (19%)	Friday (21%)	July (13%)



House District 56 Crashes

Interstate Crashes

- Fatal
- Serious Injury

Non-interstate Crashes

- Fatal
- Serious Injury

The blue gradient represents the density of all crashes.



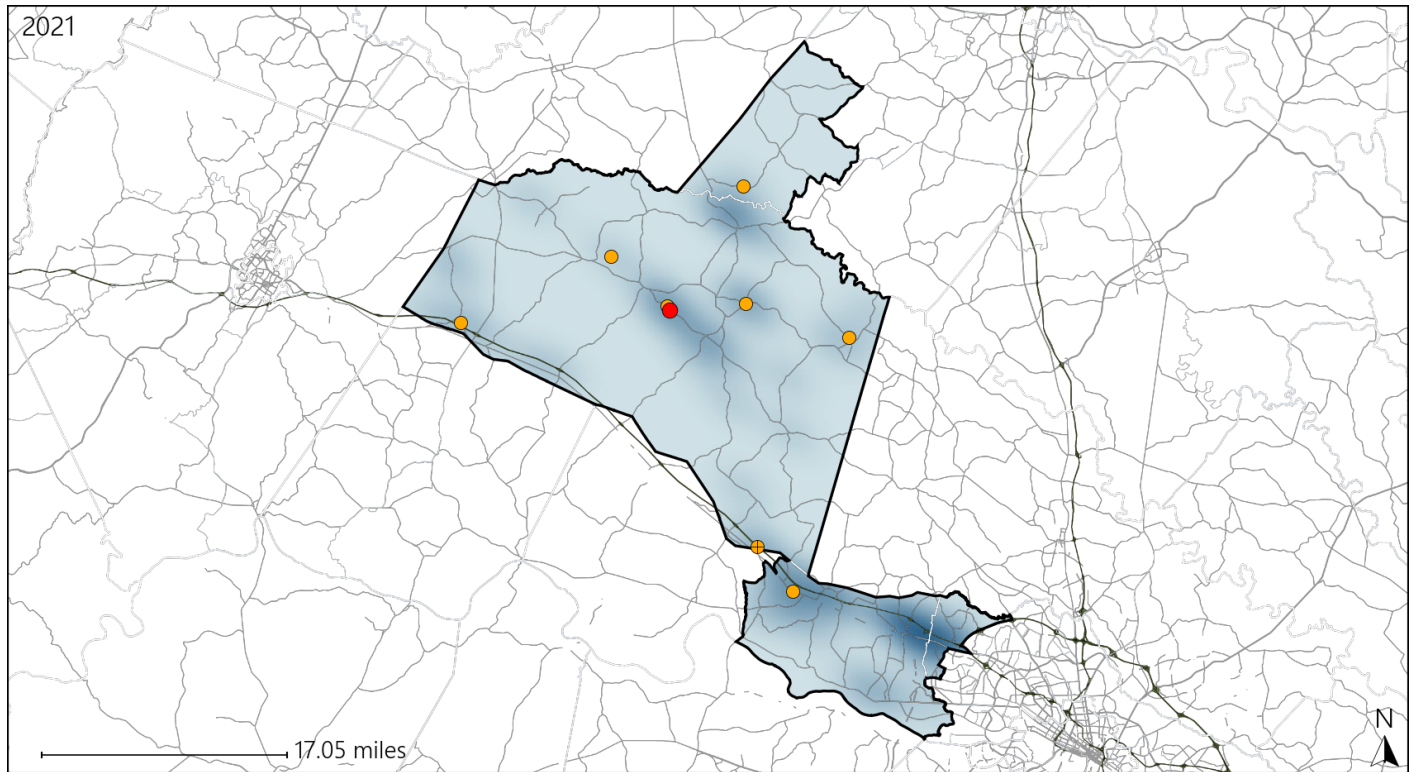
Available Crash Data - Calendar Year (CY)	CY 2018	CY 2019	CY 2020	CY 2021
Total Crashes	1422	1451	1022	1140
Fatal Crashes	12	20	7	12
Injury Crashes	417	434	333	315

Report of Crashes for January 1st - December 31st, 2021

Virginia House District 56 Alcohol Crash Statistics

Report Generated April, 2022

	Count	Highest Time Period(s)	Highest Day(s)	Highest Month(s)
Fatal Crashes	1	6:00am - 8:59am	Friday	December
Resulting Fatalities	1	(100%)	(100%)	(100%)
Serious Injury Crashes	8	3:00pm - 5:59pm 6:00pm - 8:59pm	Friday	May
		(50%)	(38%)	(38%)



House District 56 Alcohol-Related Crashes

Interstate Crashes

Non-interstate Crashes

● Fatal

● Fatal

⊕ Serious Injury

⊕ Serious Injury

The blue gradient represents the density of all alcohol-related crashes.



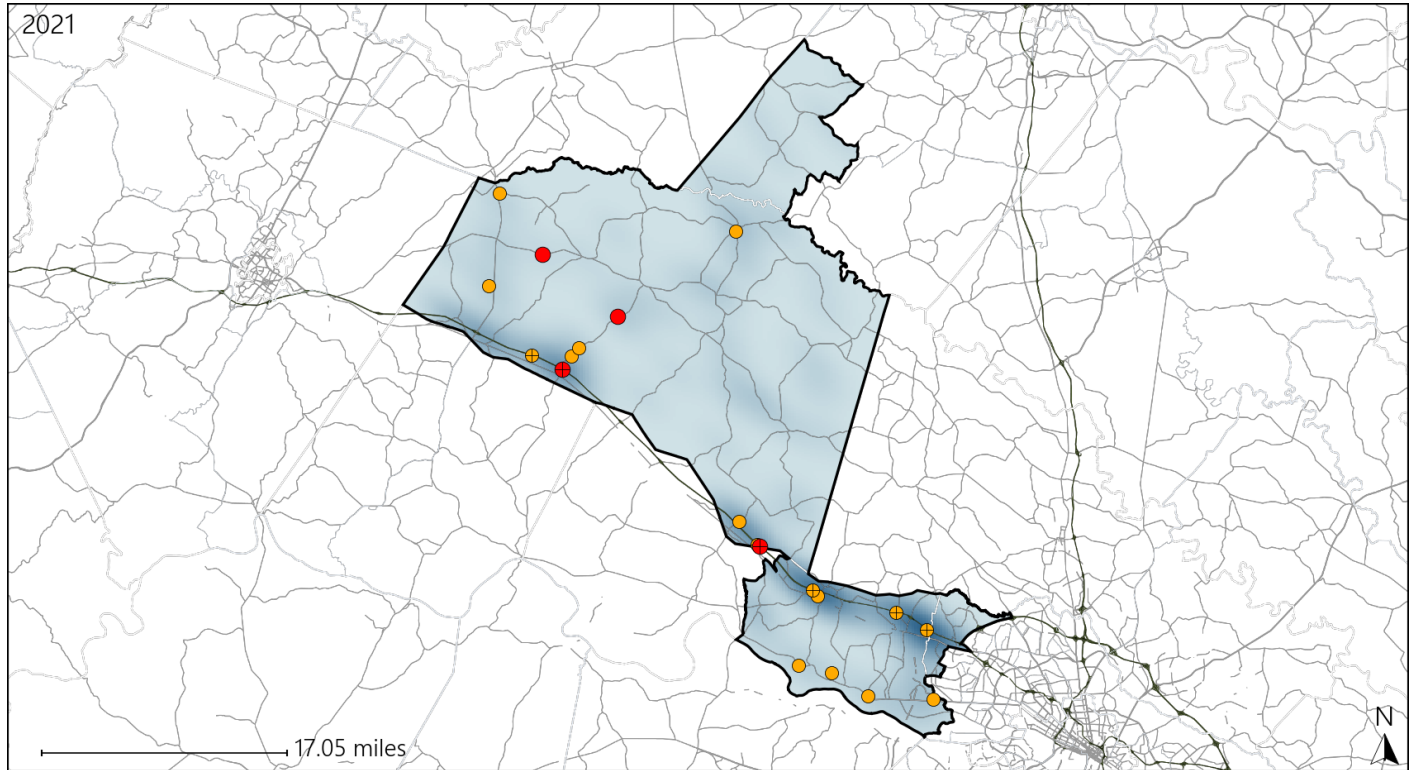
Available Crash Data - Calendar Year (CY)	CY 2018	CY 2019	CY 2020	CY 2021
Total Crashes	1422	1451	1022	1140
Fatal Crashes	12	20	7	12
Injury Crashes	417	434	333	315
Alcohol-Related Fatal Crashes	4	4	3	1
Percent of Alcohol-Related Fatal Crashes to Total Fatal Crashes	33%	20%	43%	8%
Alcohol-Related Injury Crashes	33	36	28	26
Percent of Alcohol-Related Injury Crashes to Total Injury Crashes	8%	8%	8%	8%

Report of Crashes for January 1st - December 31st, 2021

Virginia House District 56 Speed Crash Statistics

Report Generated April, 2022

	Count	Highest Time Period(s)	Highest Day(s)	Highest Month(s)
Fatal Crashes	4	3:00am - 5:59am	Monday • Saturday	October
Resulting Fatalities	4	6:00pm - 8:59pm (50%)	(50%)	(75%)
Serious Injury Crashes	16	9:00pm - 11:59pm (31%)	Friday • Monday (38%)	June (19%)



House District 56 Speed-Related Crashes

Interstate Crashes

Non-interstate Crashes

- Fatal
- Serious Injury

- Fatal
- Serious Injury

The blue gradient represents the density of all speed-related crashes.

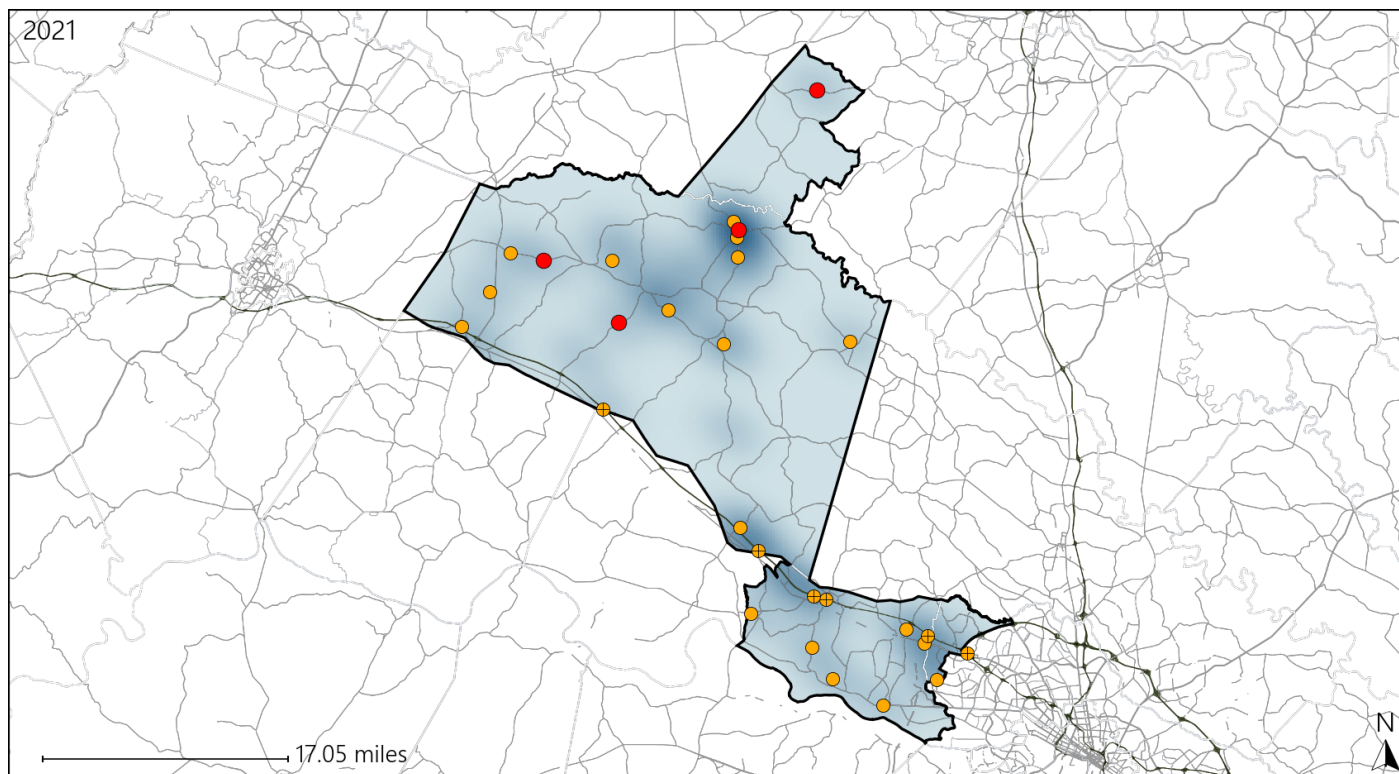


Available Crash Data - Calendar Year (CY)	CY 2018	CY 2019	CY 2020	CY 2021
Total Crashes	1422	1451	1022	1140
Fatal Crashes	12	20	7	12
Injury Crashes	417	434	333	315
Speed-Related Fatal Crashes	5	10	4	4
Percent of Speed-Related Fatal Crashes to Total Fatal Crashes	42%	50%	57%	33%
Speed-Related Injury Crashes	86	76	57	53
Percent of Speed-Related Injury Crashes to Total Injury Crashes	21%	18%	17%	17%

Virginia House District 56 Unrestrained Crash Statistics

Report Generated April, 2022

	Count	Highest Time Period(s)	Highest Day(s)	Highest Month(s)
Fatal Crashes	4	9:00am - 11:59am	Sunday	October
Unrestrained Fatalities	4	(50%)	(50%)	(50%)
Serious Injury Crashes	24	6:00am - 8:59am 9:00pm - 11:59pm	Friday • Thursday	February
		(42%)	(34%)	(17%)



House District 56 Unrestrained-Related Crashes

Interstate Crashes

Non-interstate Crashes

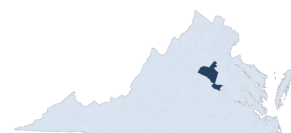
● Fatal

● Fatal

⊕ Serious Injury

⊕ Serious Injury

The blue gradient represents the density of all unrestrained-related crashes.



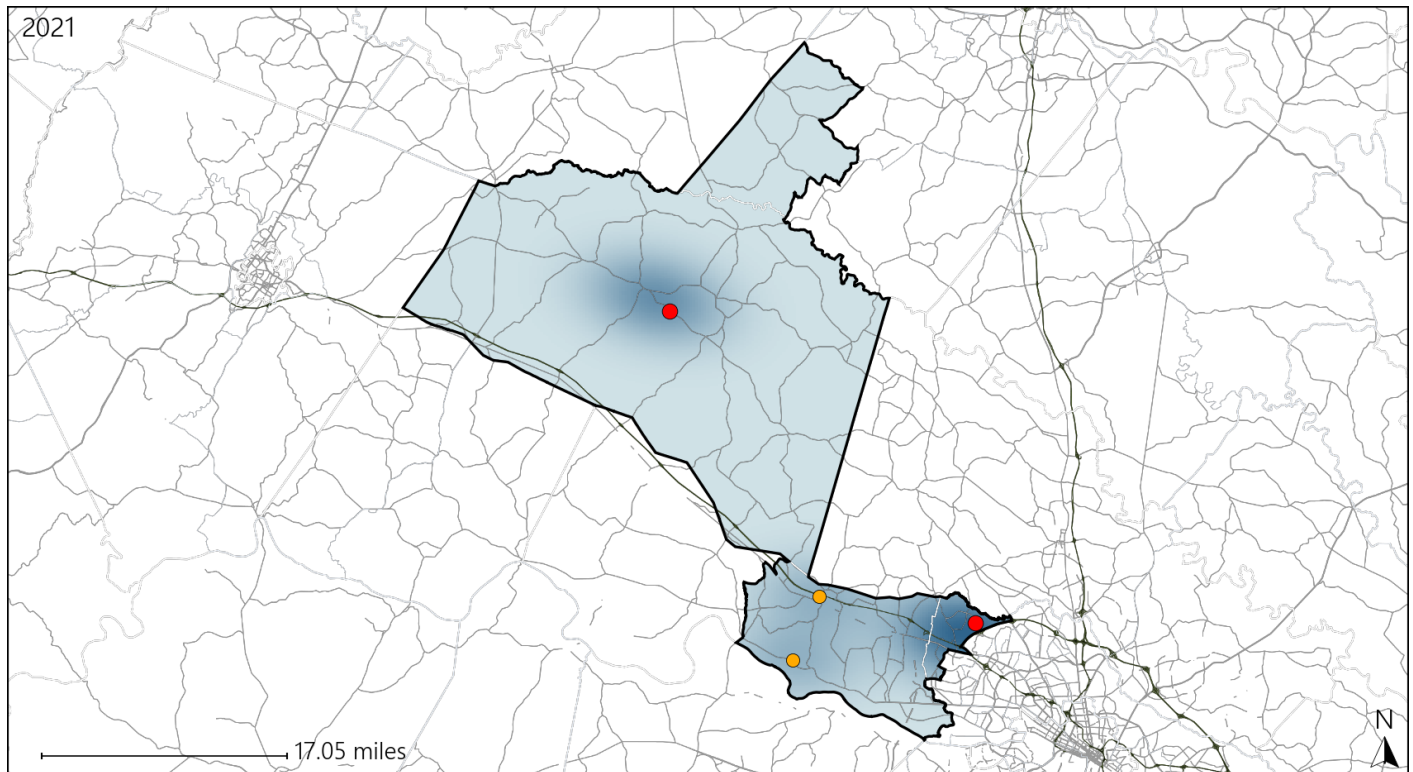
Available Crash Data - Calendar Year (CY)	CY 2018	CY 2019	CY 2020	CY 2021
Total Crashes	1422	1451	1022	1140
Fatalities	15	23	7	13
Injuries	645	659	489	481
Unrestrained Fatalities	6	15	5	4
Percent of Unrestrained Fatalities to Total Fatalities	40%	65%	71%	31%
Unrestrained Injuries	49	53	62	50
Percent of Unrestrained Injuries to Total Injuries	8%	8%	13%	10%

Report of Crashes for January 1st - December 31st, 2021

Virginia House District 56 Pedestrian Crash Statistics

Report Generated April, 2022

	Count	Highest Time Period(s)	Highest Day(s)	Highest Month(s)
Fatal Crashes	2	6:00am - 8:59am	Friday • Saturday	December • October
Pedestrian Fatalities	2	9:00pm - 11:59pm (100%)	(100%)	(100%)
Serious Injury Crashes	2	9:00pm - 11:59pm Midnight - 2:59am (100%)	Friday • Sunday (100%)	February • September (100%)



House District 56 Pedestrian-Related Crashes

Interstate Crashes

Non-interstate Crashes

- Fatal
- ⊕ Serious Injury

- Fatal
- Serious Injury

The blue gradient represents the density of all pedestrian-related crashes.

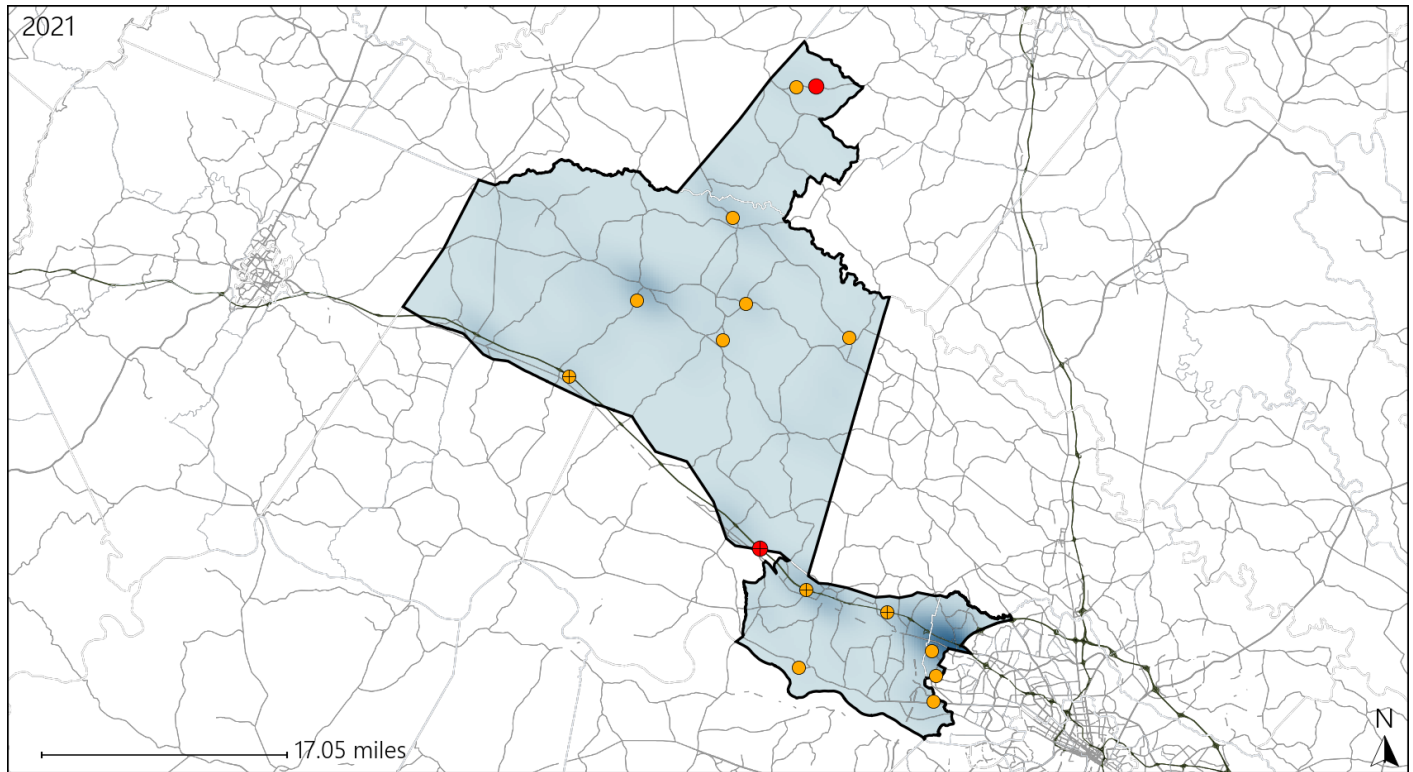


Available Crash Data - Calendar Year (CY)	CY 2018	CY 2019	CY 2020	CY 2021
Total Crashes	1422	1451	1022	1140
Fatal Crashes	12	20	7	12
Injury Crashes	417	434	333	315
Pedestrian-Related Fatal Crashes	2	1	0	2
Percent of Pedestrian-Related Fatal Crashes to Total Fatal Crashes	17%	5%	0%	17%
Pedestrian-Related Injury Crashes	9	6	6	5
Percent of Pedestrian-Related Injury Crashes to Total Injury Crashes	2%	1%	2%	2%

Virginia House District 56 Distracted Driving Crash Statistics

Report Generated April, 2022

	Count	Highest Time Period(s)	Highest Day(s)	Highest Month(s)
Fatal Crashes	2	3:00am - 5:59am	Saturday • Sunday	August • October
Resulting Fatalities	2	9:00am - 11:59am (100%)	(100%)	(100%)
Serious Injury Crashes	13	9:00am - 11:59am (31%)	Friday (38%)	January • June (46%)



House District 56 Distracted Driving-Related Crashes

Interstate Crashes

- Fatal
- Serious Injury

Non-interstate Crashes

- Fatal
- Serious Injury

The blue gradient represents the density of all distracted driving-related crashes.



Available Crash Data - Calendar Year (CY)	CY 2018	CY 2019	CY 2020	CY 2021
Total Crashes	1422	1451	1022	1140
Fatal Crashes	12	20	7	12
Injury Crashes	417	434	333	315
Distracted Driving-Related Fatal Crashes	4	6	0	2
Percent of Distracted Driving-Related Fatal Crashes to Total Fatal Crashes	33%	30%	0%	17%
Distracted Driving-Related Injury Crashes	91	94	63	61
Percent of Distracted Driving-Related Injury Crashes to Total Injury Crashes	22%	22%	19%	19%