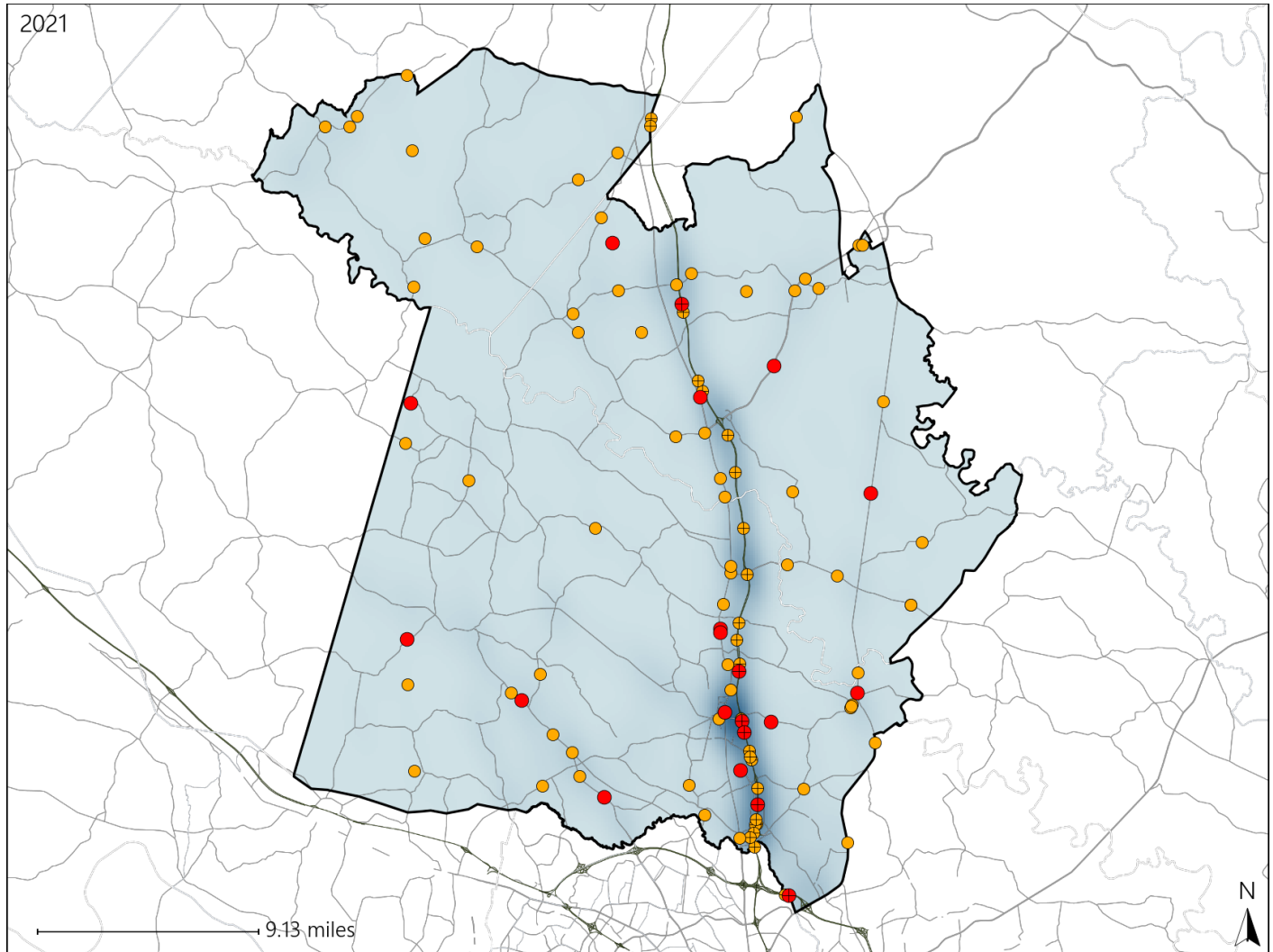


Virginia House District 55 Crash Statistics

Report Generated April, 2022

	Count	Highest Time Period(s)	Highest Day(s)	Highest Month(s)
Fatal Crashes	20	Noon - 2:59pm	Friday	July
Resulting Fatalities	22	(25%)	(25%)	(25%)
Serious Injury Crashes	87	Noon - 2:59pm	Friday	October
		(18%)	(21%)	(13%)



House District 55 Crashes

Interstate Crashes

- Fatal
- Serious Injury

Non-interstate Crashes

- Fatal
- Serious Injury

The blue gradient represents the density of all crashes.

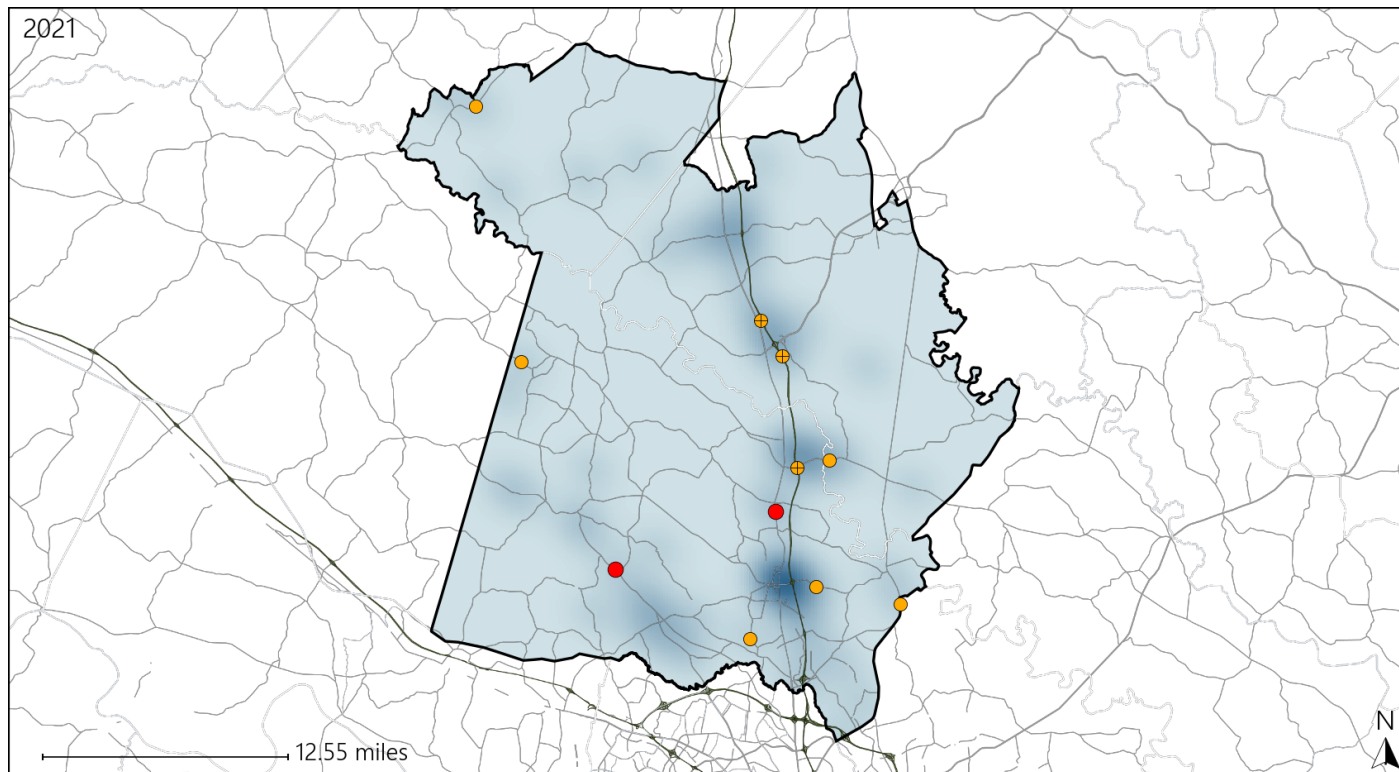


Available Crash Data - Calendar Year (CY)	CY 2018	CY 2019	CY 2020	CY 2021
Total Crashes	1728	1593	1402	1727
Fatal Crashes	16	16	14	20
Injury Crashes	498	426	394	430

Virginia House District 55 Alcohol Crash Statistics

Report Generated April, 2022

	Count	Highest Time Period(s)	Highest Day(s)	Highest Month(s)
Fatal Crashes	2	3:00am - 5:59am	Friday • Monday	January • November
Resulting Fatalities	2	9:00pm - 11:59pm (100%)	(100%)	(100%)
Serious Injury Crashes	9	9:00pm - 11:59pm (56%)	Thursday (33%)	August • January (44%)



House District 55 Alcohol-Related Crashes

Interstate Crashes

Non-interstate Crashes

● Fatal

● Fatal

● Serious Injury

● Serious Injury

The blue gradient represents the density of all alcohol-related crashes.



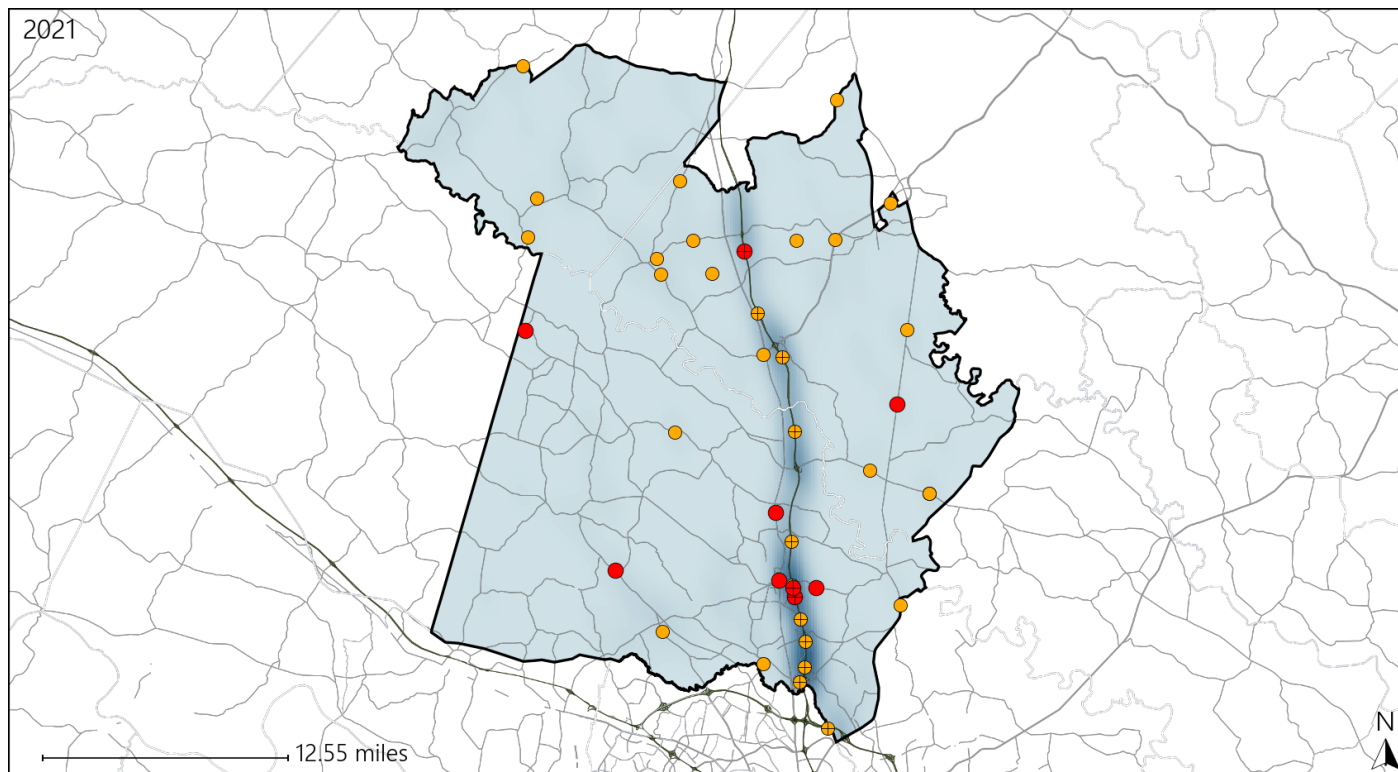
Available Crash Data - Calendar Year (CY)	CY 2018	CY 2019	CY 2020	CY 2021
Total Crashes	1728	1593	1402	1727
Fatal Crashes	16	16	14	20
Injury Crashes	498	426	394	430
Alcohol-Related Fatal Crashes	4	6	5	2
Percent of Alcohol-Related Fatal Crashes to Total Fatal Crashes	25%	38%	36%	10%
Alcohol-Related Injury Crashes	47	29	29	28
Percent of Alcohol-Related Injury Crashes to Total Injury Crashes	9%	7%	7%	7%

Report of Crashes for January 1st - December 31st, 2021

Virginia House District 55 Speed Crash Statistics

Report Generated April, 2022

	Count	Highest Time Period(s)	Highest Day(s)	Highest Month(s)
Fatal Crashes	9	9:00pm - 11:59pm	Monday • Saturday	August • January
Resulting Fatalities	10	(33%)	(44%)	(44%)
Serious Injury Crashes	31	9:00pm - 11:59pm	Friday	October
		(16%)	(32%)	(16%)



House District 55 Speed-Related Crashes

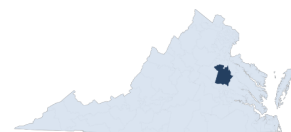
Interstate Crashes

- Fatal
- Serious Injury

Non-interstate Crashes

- Fatal
- Serious Injury

The blue gradient represents the density of all speed-related crashes.



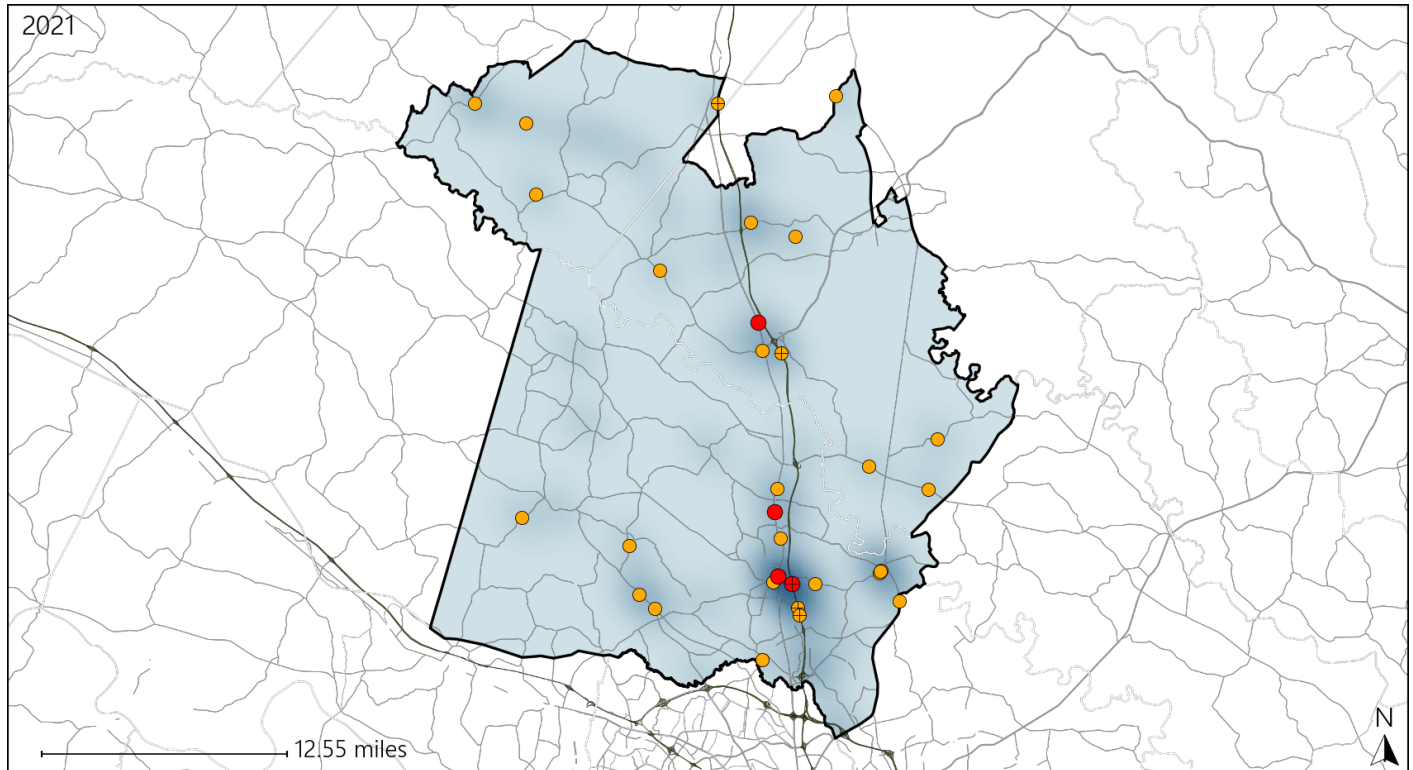
Available Crash Data - Calendar Year (CY)	CY 2018	CY 2019	CY 2020	CY 2021
Total Crashes	1728	1593	1402	1727
Fatal Crashes	16	16	14	20
Injury Crashes	498	426	394	430
Speed-Related Fatal Crashes	4	7	6	9
Percent of Speed-Related Fatal Crashes to Total Fatal Crashes	25%	44%	43%	45%
Speed-Related Injury Crashes	115	101	117	115
Percent of Speed-Related Injury Crashes to Total Injury Crashes	23%	24%	30%	27%

Report of Crashes for January 1st - December 31st, 2021

Virginia House District 55 Unrestrained Crash Statistics

Report Generated April, 2022

	Count	Highest Time Period(s)	Highest Day(s)	Highest Month(s)
Fatal Crashes	4	Midnight - 2:59am	Wednesday	August • December
Unrestrained Fatalities	4	(50%)	(50%)	(50%)
Serious Injury Crashes	28	6:00pm - 8:59pm	Thursday • Wednesday	May • November
		(25%)	(42%)	(28%)



House District 55 Unrestrained-Related Crashes

Interstate Crashes

Non-interstate Crashes

- Fatal
- Serious Injury

- Fatal
- Serious Injury

The blue gradient represents the density of all unrestrained-related crashes.

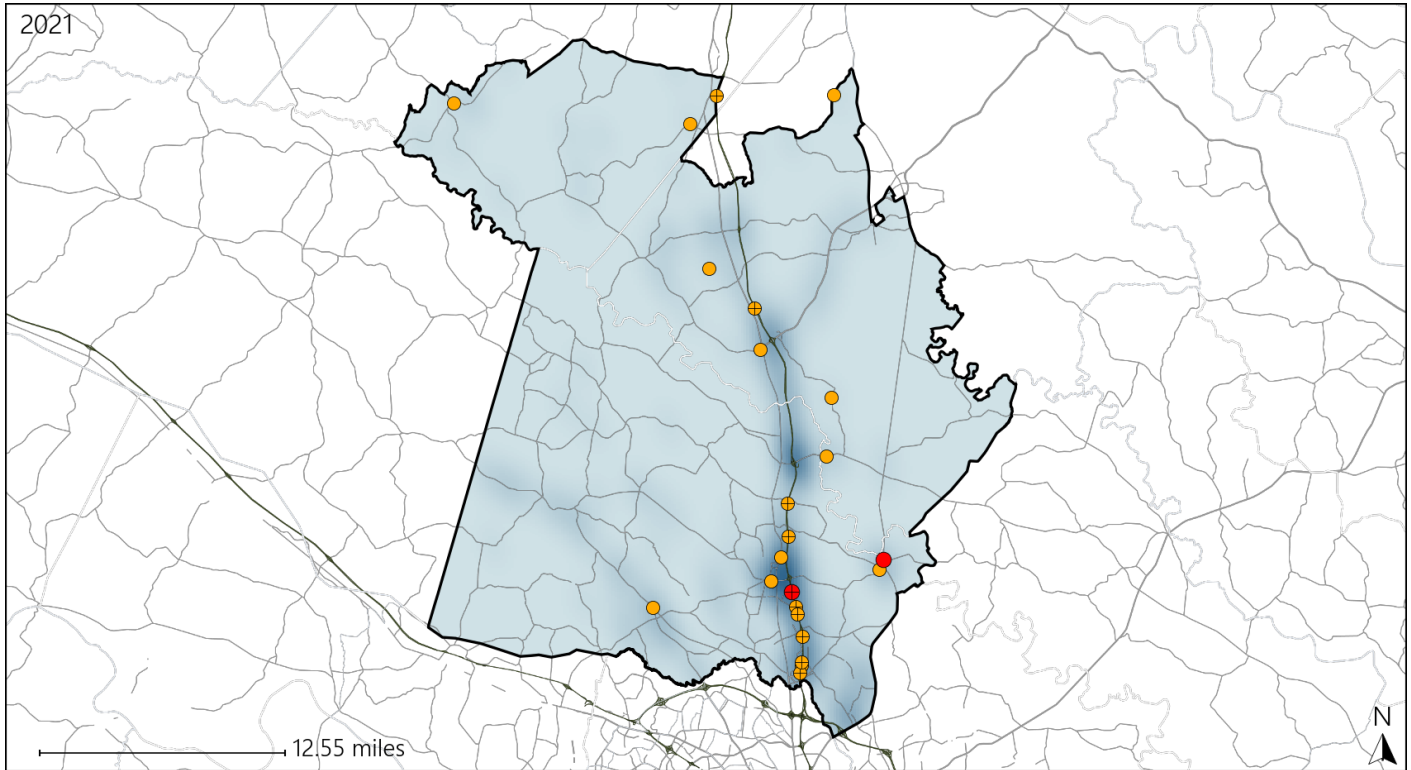


Available Crash Data - Calendar Year (CY)	CY 2018	CY 2019	CY 2020	CY 2021
Total Crashes	1728	1593	1402	1727
Fatalities	17	19	15	22
Injuries	718	677	554	616
Unrestrained Fatalities	7	8	8	4
Percent of Unrestrained Fatalities to Total Fatalities	41%	42%	53%	18%
Unrestrained Injuries	74	46	58	74
Percent of Unrestrained Injuries to Total Injuries	10%	7%	10%	12%

Virginia House District 55 Distracted Driving Crash Statistics

Report Generated April, 2022

	Count	Highest Time Period(s)	Highest Day(s)	Highest Month(s)
Fatal Crashes	2	9:00pm - 11:59pm	Monday • Saturday	January • May
Resulting Fatalities	2	Noon - 2:59pm (100%)	(100%)	(100%)
Serious Injury Crashes	21	Noon - 2:59pm (19%)	Friday • Saturday (38%)	October (24%)



House District 55 Distracted Driving-Related Crashes

Interstate Crashes

- Fatal
- Serious Injury

Non-interstate Crashes

- Fatal
- Serious Injury

The blue gradient represents the density of all distracted driving-related crashes.



Available Crash Data - Calendar Year (CY)	CY 2018	CY 2019	CY 2020	CY 2021
Total Crashes	1728	1593	1402	1727
Fatal Crashes	16	16	14	20
Injury Crashes	498	426	394	430
Distracted Driving-Related Fatal Crashes	2	1	2	2
Percent of Distracted Driving-Related Fatal Crashes to Total Fatal Crashes	13%	6%	14%	10%
Distracted Driving-Related Injury Crashes	100	81	76	91
Percent of Distracted Driving-Related Injury Crashes to Total Injury Crashes	20%	19%	19%	21%