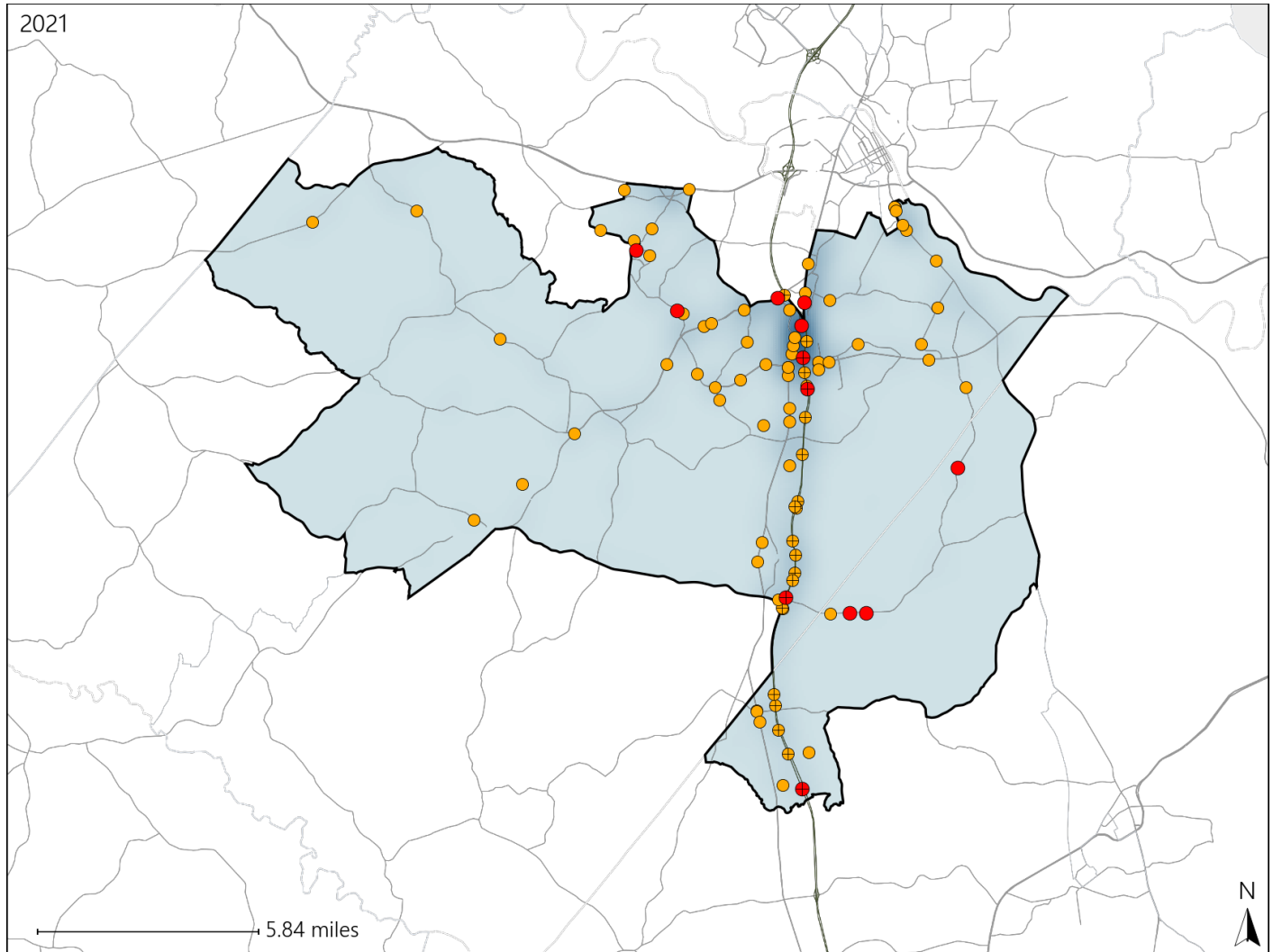


Virginia House District 54 Crash Statistics

Report Generated April, 2022

	Count	Highest Time Period(s)	Highest Day(s)	Highest Month(s)
Fatal Crashes	12	6:00pm - 8:59pm	Wednesday	October
Resulting Fatalities	13	(33%)	(33%)	(33%)
Serious Injury Crashes	80	3:00pm - 5:59pm	Friday	December - May
		(20%)	(20%)	(24%)



House District 54 Crashes

Interstate Crashes

- Fatal
- Serious Injury

Non-interstate Crashes

- Fatal
- Serious Injury

The blue gradient represents the density of all crashes.



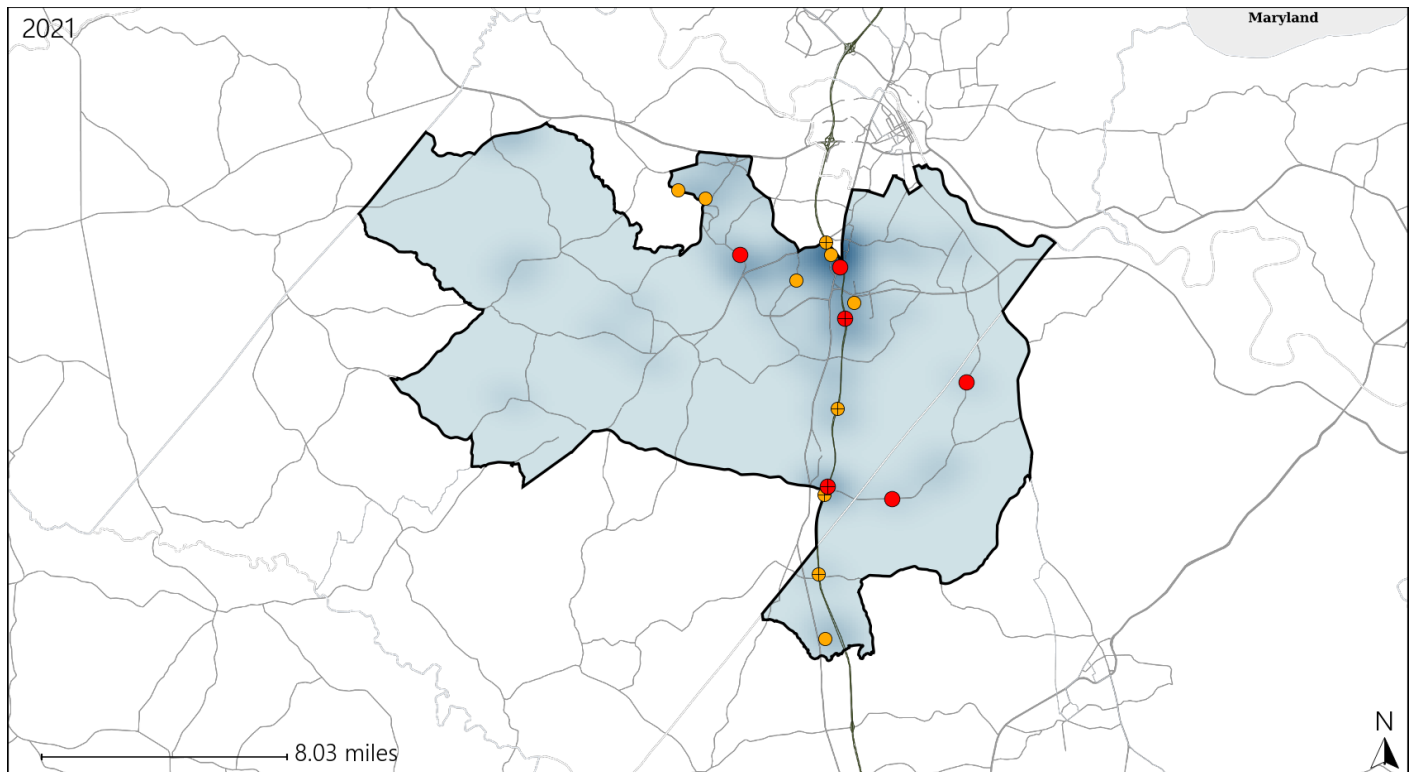
Available Crash Data - Calendar Year (CY)	CY 2018	CY 2019	CY 2020	CY 2021
Total Crashes	1495	1343	1165	1372
Fatal Crashes	13	8	7	12
Injury Crashes	396	363	298	352

Report of Crashes for January 1st - December 31st, 2021

Virginia House District 54 Alcohol Crash Statistics

Report Generated April, 2022

	Count	Highest Time Period(s)	Highest Day(s)	Highest Month(s)
Fatal Crashes	6	6:00pm - 8:59pm	Tuesday • Wednesday	October
Resulting Fatalities	7	(50%)	(66%)	(33%)
Serious Injury Crashes	10	3:00am - 5:59am	Sunday	February • October
		3:00pm - 5:59pm	(30%)	(40%)
		(40%)		



House District 54 Alcohol-Related Crashes

Interstate Crashes

Non-interstate Crashes

● Fatal

● Fatal

⊕ Serious Injury

⊕ Serious Injury

The blue gradient represents the density of all alcohol-related crashes.

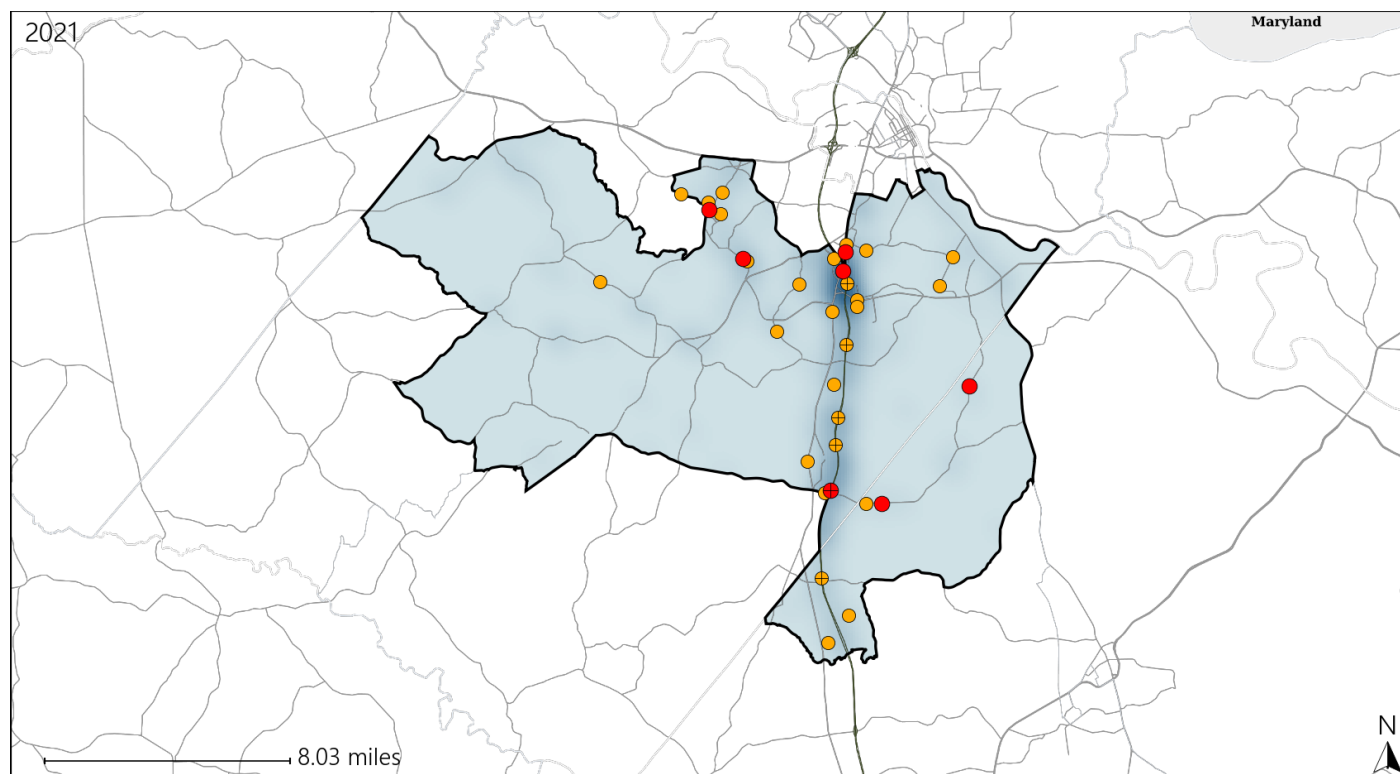


Available Crash Data - Calendar Year (CY)	CY 2018	CY 2019	CY 2020	CY 2021
Total Crashes	1495	1343	1165	1372
Fatal Crashes	13	8	7	12
Injury Crashes	396	363	298	352
Alcohol-Related Fatal Crashes	2	4	0	6
Percent of Alcohol-Related Fatal Crashes to Total Fatal Crashes	15%	50%	0%	50%
Alcohol-Related Injury Crashes	24	31	18	22
Percent of Alcohol-Related Injury Crashes to Total Injury Crashes	6%	9%	6%	6%

Virginia House District 54 Speed Crash Statistics

Report Generated April, 2022



	Count	Highest Time Period(s)	Highest Day(s)	Highest Month(s)
Fatal Crashes	7	6:00pm - 8:59pm	Monday • Tuesday	October
Resulting Fatalities	8	(57%)	(58%)	(43%)
Serious Injury Crashes	27	6:00am - 8:59am	Saturday	July
		6:00pm - 8:59pm	(22%)	(19%)
		(30%)		



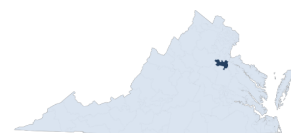
House District 54 Speed-Related Crashes

Interstate Crashes

Non-interstate Crashes

 Fatal Fatal Serious Injury Serious Injury

The blue gradient represents the density of all speed-related crashes.

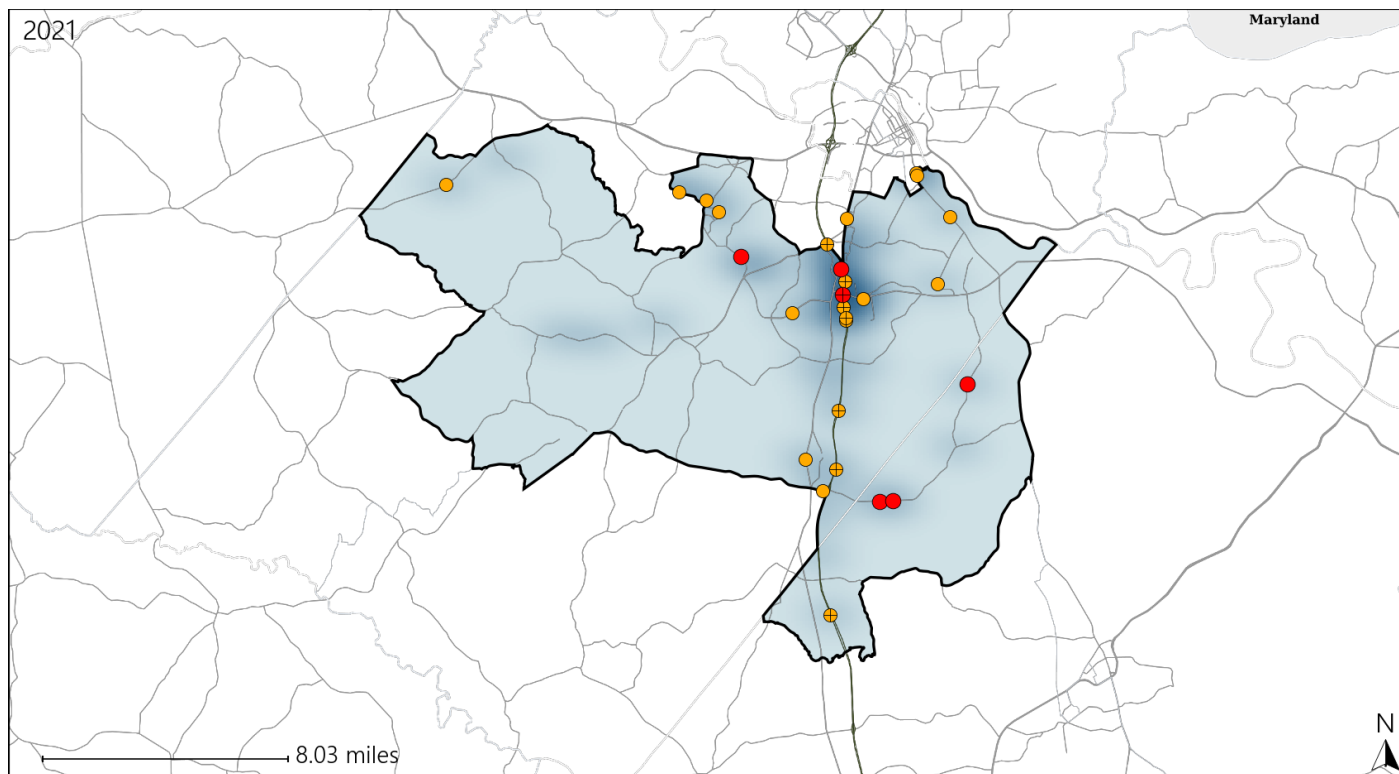


Available Crash Data - Calendar Year (CY)	CY 2018	CY 2019	CY 2020	CY 2021
Total Crashes	1495	1343	1165	1372
Fatal Crashes	13	8	7	12
Injury Crashes	396	363	298	352
Speed-Related Fatal Crashes	9	5	3	7
Percent of Speed-Related Fatal Crashes to Total Fatal Crashes	69%	63%	43%	58%
Speed-Related Injury Crashes	85	88	73	80
Percent of Speed-Related Injury Crashes to Total Injury Crashes	21%	24%	24%	23%

Virginia House District 54 Unrestrained Crash Statistics

Report Generated April, 2022

	Count	Highest Time Period(s)	Highest Day(s)	Highest Month(s)
Fatal Crashes	6	6:00pm - 8:59pm	Tuesday	October
Unrestrained Fatalities	7	(50%)	(50%)	(50%)
Serious Injury Crashes	21	3:00am - 5:59am	Saturday	September
		Midnight - 2:59am	(24%)	(24%)
		(38%)		



House District 54 Unrestrained-Related Crashes

Interstate Crashes

Non-interstate Crashes

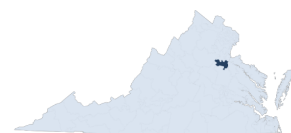
● Fatal

● Fatal

⊕ Serious Injury

⊕ Serious Injury

The blue gradient represents the density of all unrestrained-related crashes.

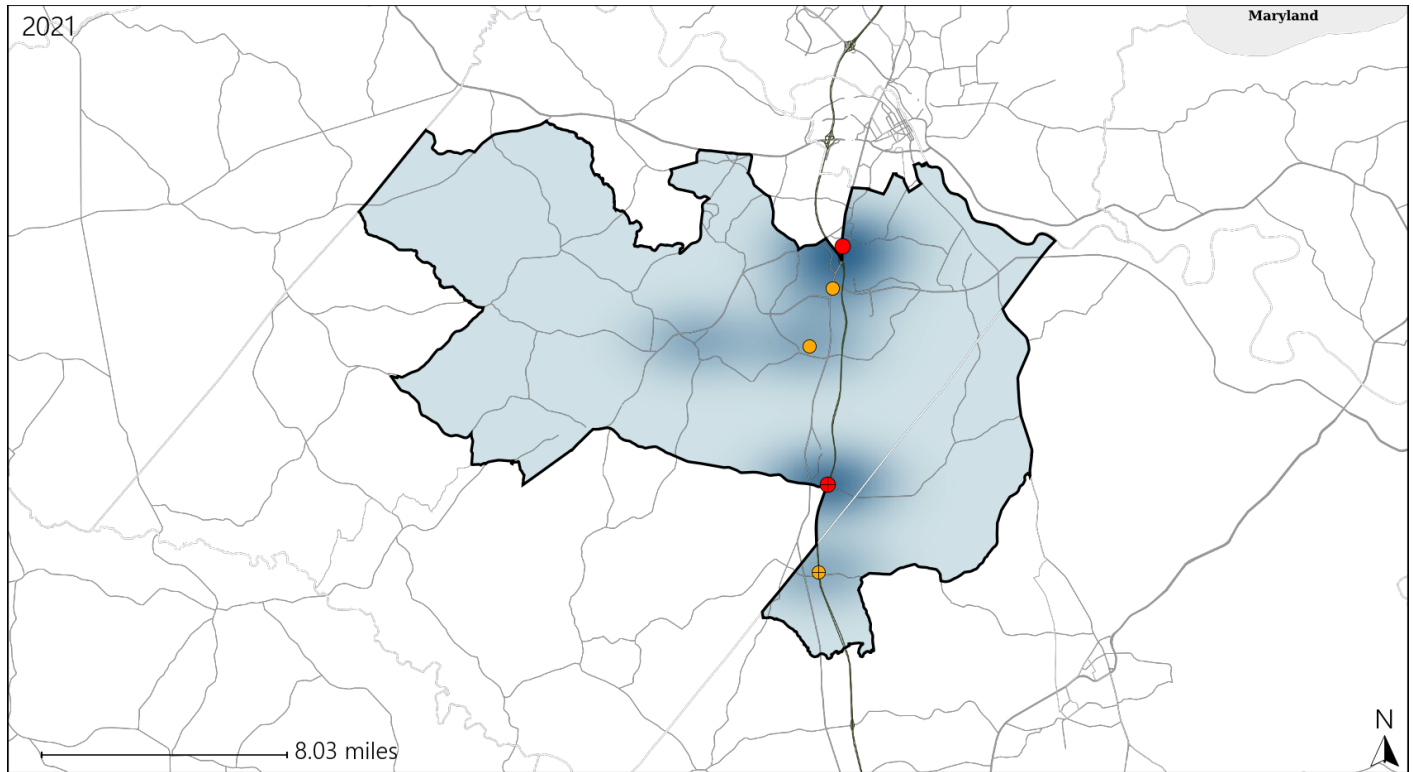


Available Crash Data - Calendar Year (CY)	CY 2018	CY 2019	CY 2020	CY 2021
Total Crashes	1495	1343	1165	1372
Fatalities	14	10	7	13
Injuries	592	555	408	604
Unrestrained Fatalities	6	10	1	7
Percent of Unrestrained Fatalities to Total Fatalities	43%	100%	14%	54%
Unrestrained Injuries	34	35	40	53
Percent of Unrestrained Injuries to Total Injuries	6%	6%	10%	9%

Virginia House District 54 Pedestrian Crash Statistics

Report Generated April, 2022

	Count	Highest Time Period(s)	Highest Day(s)	Highest Month(s)
Fatal Crashes	2	3:00am - 5:59am	Saturday • Wednesday	December • October
Pedestrian Fatalities	2	6:00pm - 8:59pm (100%)	(100%)	(100%)
Serious Injury Crashes	3	6:00pm - 8:59pm (67%)	Monday • Sunday (66%)	April • July (66%)



House District 54 Pedestrian-Related Crashes

Interstate Crashes

- Fatal
- Serious Injury

Non-interstate Crashes

- Fatal
- Serious Injury

The blue gradient represents the density of all pedestrian-related crashes.

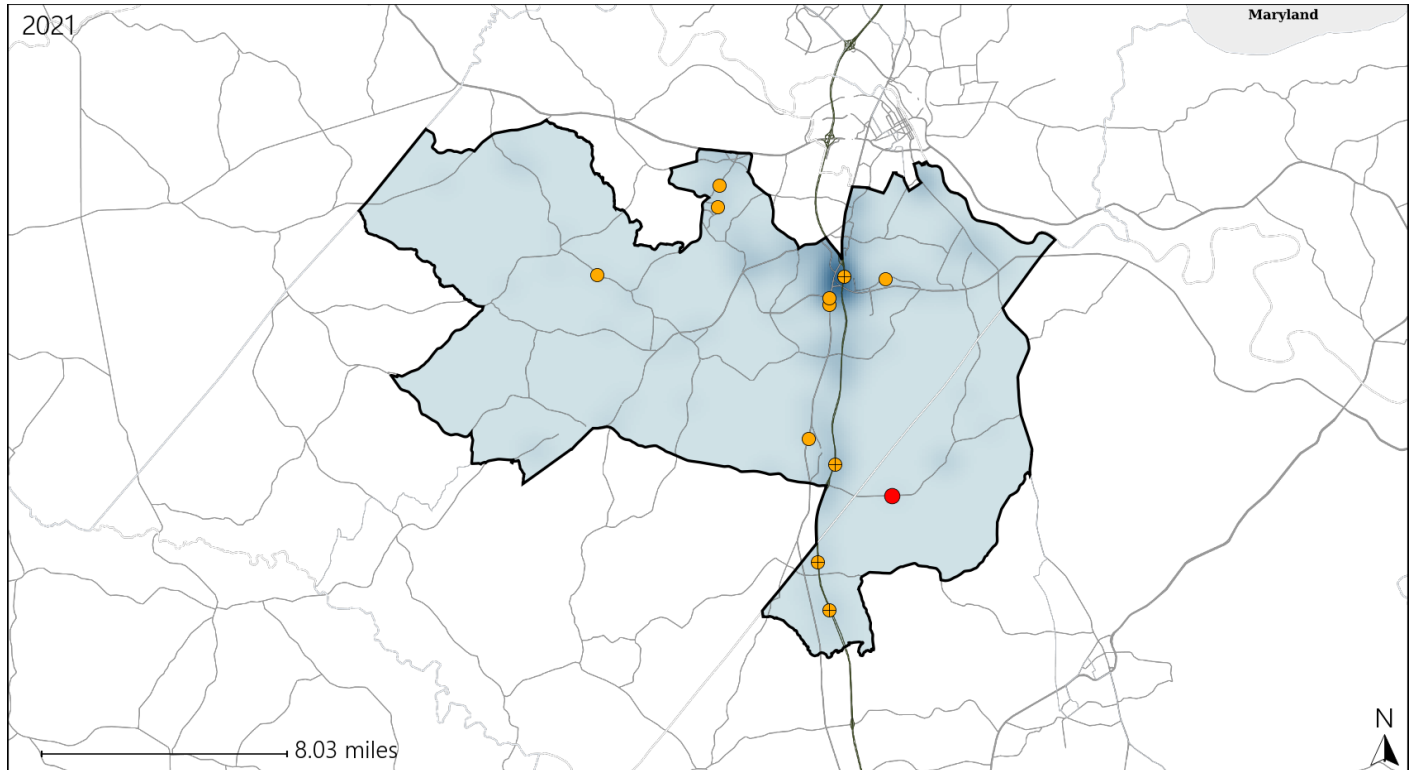


Available Crash Data - Calendar Year (CY)	CY 2018	CY 2019	CY 2020	CY 2021
Total Crashes	1495	1343	1165	1372
Fatal Crashes	13	8	7	12
Injury Crashes	396	363	298	352
Pedestrian-Related Fatal Crashes	0	0	0	2
Percent of Pedestrian-Related Fatal Crashes to Total Fatal Crashes	0%	0%	0%	17%
Pedestrian-Related Injury Crashes	6	12	8	6
Percent of Pedestrian-Related Injury Crashes to Total Injury Crashes	2%	3%	3%	2%

Virginia House District 54 Distracted Driving Crash Statistics

Report Generated April, 2022

	Count	Highest Time Period(s)	Highest Day(s)	Highest Month(s)
Fatal Crashes	1	9:00pm - 11:59pm	Tuesday	July
Resulting Fatalities	1	(100%)	(100%)	(100%)
Serious Injury Crashes	11	Noon - 2:59pm	Friday	December
		(36%)	(36%)	(36%)



House District 54 Distracted Driving-Related Crashes

Interstate Crashes

Non-interstate Crashes

- Fatal
- Serious Injury

- Fatal
- Serious Injury

The blue gradient represents the density of all distracted driving-related crashes.



Available Crash Data - Calendar Year (CY)	CY 2018	CY 2019	CY 2020	CY 2021
Total Crashes	1495	1343	1165	1372
Fatal Crashes	13	8	7	12
Injury Crashes	396	363	298	352
Distracted Driving-Related Fatal Crashes	2	1	0	1
Percent of Distracted Driving-Related Fatal Crashes to Total Fatal Crashes	15%	13%	0%	8%
Distracted Driving-Related Injury Crashes	90	73	58	63
Percent of Distracted Driving-Related Injury Crashes to Total Injury Crashes	23%	20%	19%	18%