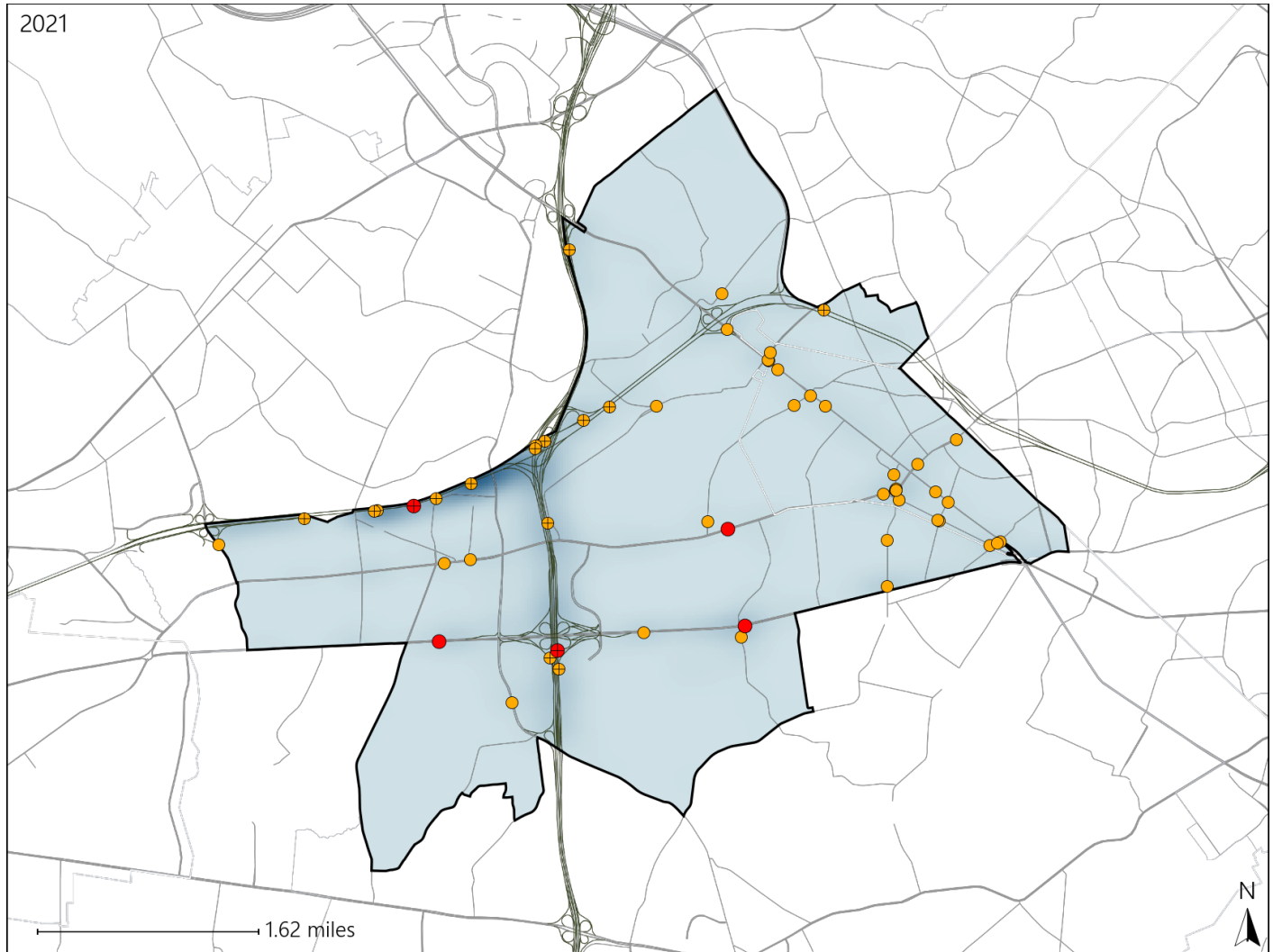


Virginia House District 53 Crash Statistics

Report Generated April, 2022

	Count	Highest Time Period(s)	Highest Day(s)	Highest Month(s)
Fatal Crashes	5	3:00am - 5:59am (40%)	Thursday (40%)	April • January (40%)
Resulting Fatalities	7			
Serious Injury Crashes	50	6:00am - 8:59am (24%)	Friday (22%)	April • November (24%)



House District 53 Crashes

Interstate Crashes

- Fatal
- Serious Injury

Non-interstate Crashes

- Fatal
- Serious Injury

The blue gradient represents the density of all crashes.

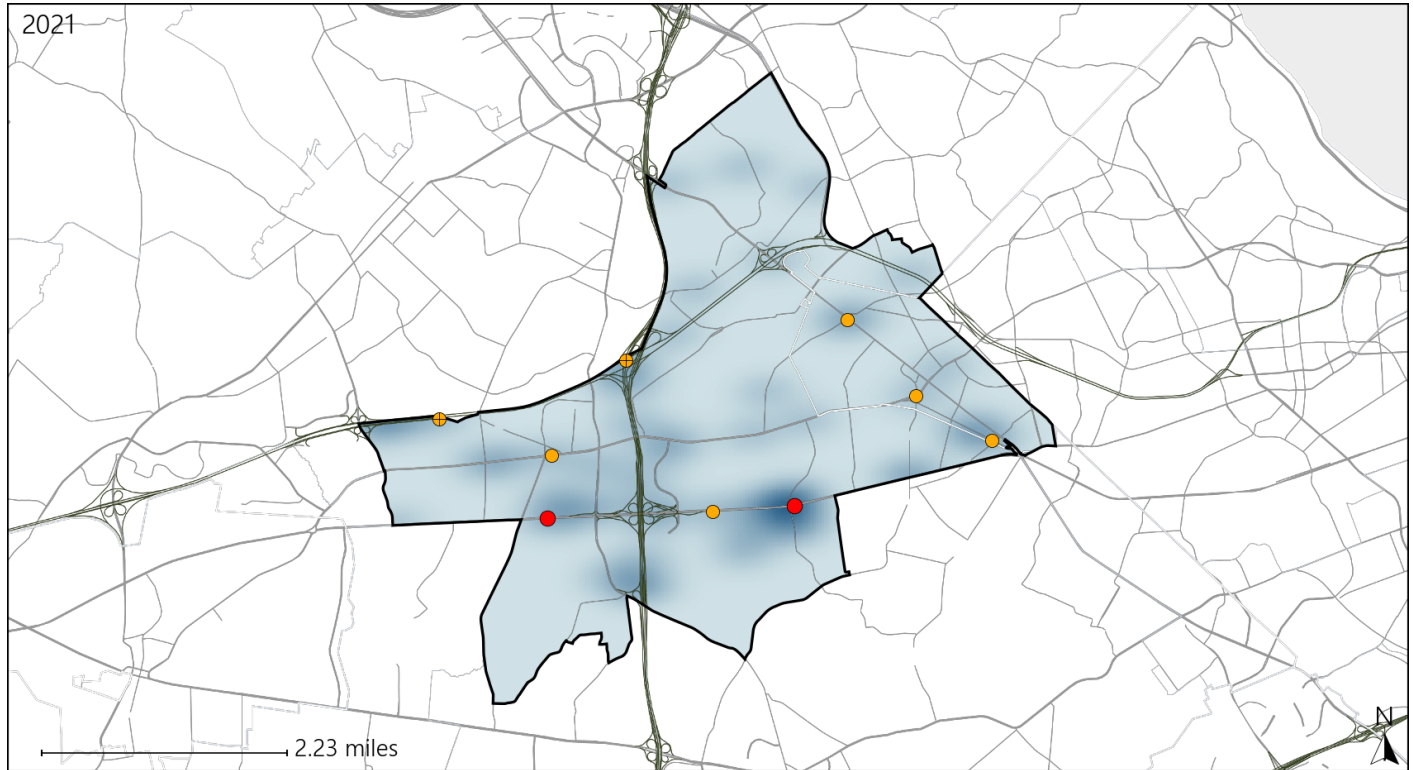


Available Crash Data - Calendar Year (CY)	CY 2018	CY 2019	CY 2020	CY 2021
Total Crashes	1385	1405	854	1003
Fatal Crashes	2	5	0	5
Injury Crashes	454	464	262	341

Virginia House District 53 Alcohol Crash Statistics

Report Generated April, 2022

	Count	Highest Time Period(s)	Highest Day(s)	Highest Month(s)
Fatal Crashes	2	3:00am - 5:59am	Friday • Monday	April • March
Resulting Fatalities	2	9:00pm - 11:59pm (100%)	(100%)	(100%)
Serious Injury Crashes	7	9:00pm - 11:59pm (43%)	Saturday (43%)	January (29%)



House District 53 Alcohol-Related Crashes

Interstate Crashes

Non-interstate Crashes

- Fatal
- Serious Injury

- Fatal
- Serious Injury

The blue gradient represents the density of all alcohol-related crashes.



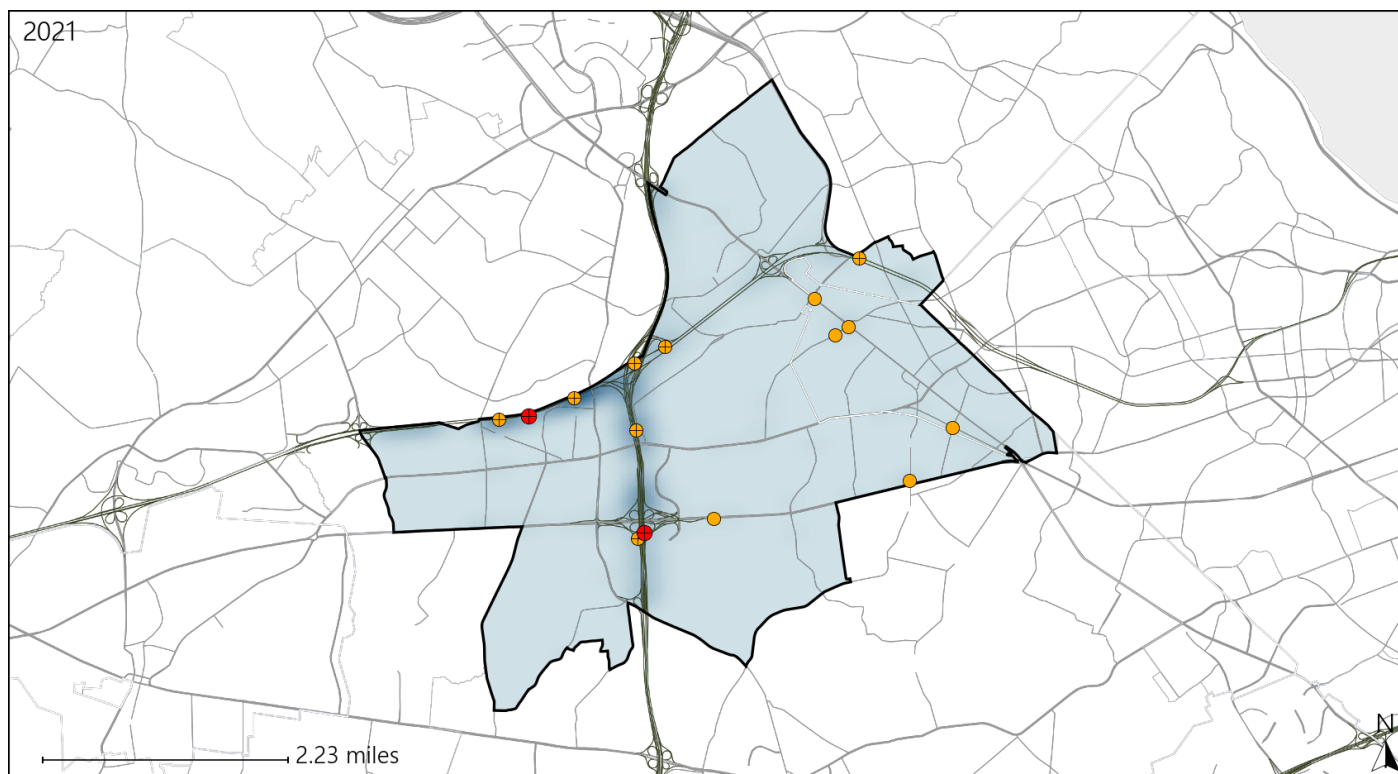
Available Crash Data - Calendar Year (CY)	CY 2018	CY 2019	CY 2020	CY 2021
Total Crashes	1385	1405	854	1003
Fatal Crashes	2	5	0	5
Injury Crashes	454	464	262	341
Alcohol-Related Fatal Crashes	2	1	0	2
Percent of Alcohol-Related Fatal Crashes to Total Fatal Crashes	100%	20%	0%	40%
Alcohol-Related Injury Crashes	16	20	21	19
Percent of Alcohol-Related Injury Crashes to Total Injury Crashes	4%	4%	8%	6%

Report of Crashes for January 1st - December 31st, 2021

Virginia House District 53 Speed Crash Statistics

Report Generated April, 2022

	Count	Highest Time Period(s)	Highest Day(s)	Highest Month(s)
Fatal Crashes	2	3:00am - 5:59am	Thursday	October • September
Resulting Fatalities	4	Midnight - 2:59am (100%)	(100%)	(100%)
Serious Injury Crashes	13	6:00am - 8:59am 6:00pm - 8:59pm (46%)	Friday • Monday (46%)	January • June (30%)



House District 53 Speed-Related Crashes

Interstate Crashes

● Fatal

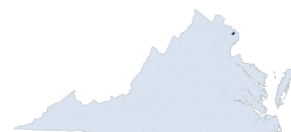
● Serious Injury

Non-interstate Crashes

● Fatal

● Serious Injury

The blue gradient represents the density of all speed-related crashes.

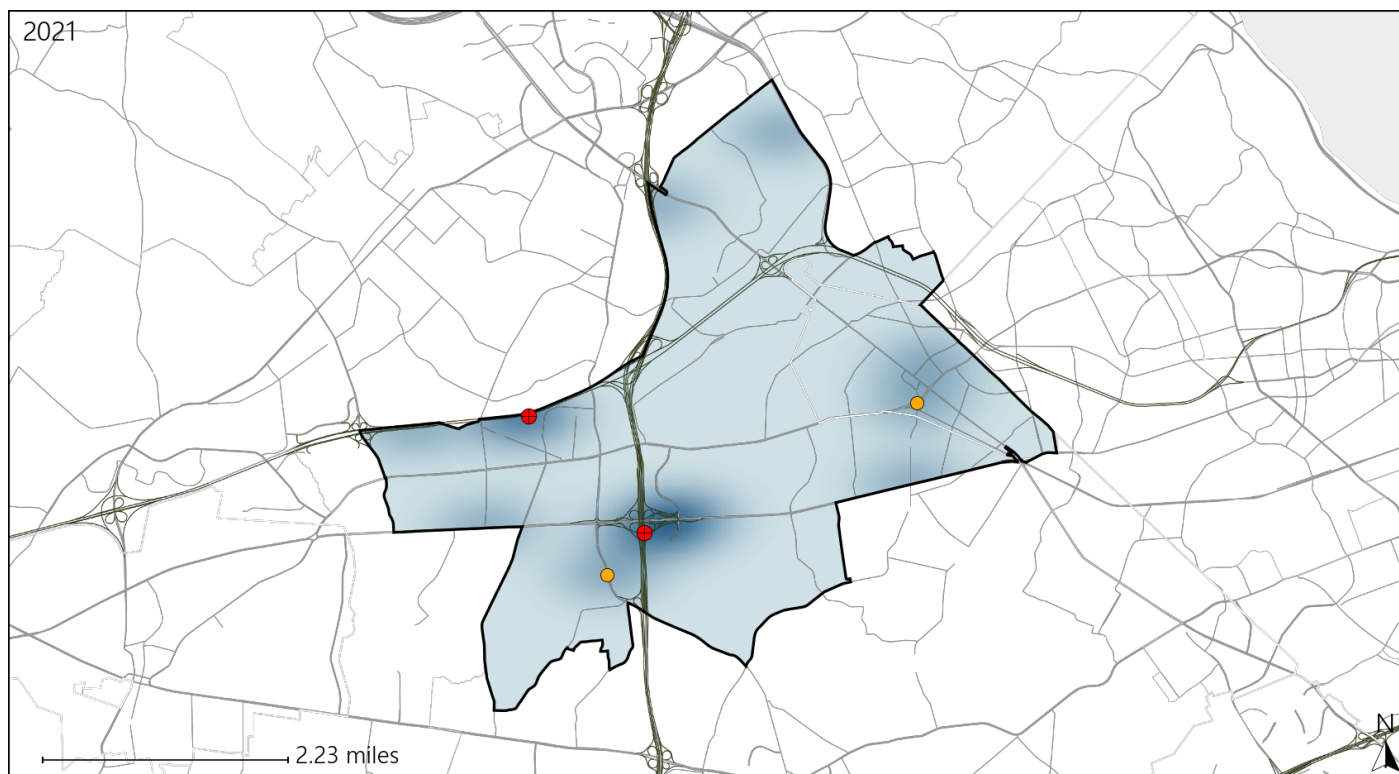


Available Crash Data - Calendar Year (CY)	CY 2018	CY 2019	CY 2020	CY 2021
Total Crashes	1385	1405	854	1003
Fatal Crashes	2	5	0	5
Injury Crashes	454	464	262	341
Speed-Related Fatal Crashes	1	2	0	2
Percent of Speed-Related Fatal Crashes to Total Fatal Crashes	50%	40%	0%	40%
Speed-Related Injury Crashes	130	128	90	101
Percent of Speed-Related Injury Crashes to Total Injury Crashes	29%	28%	34%	30%

Virginia House District 53 Unrestrained Crash Statistics

Report Generated April, 2022

	Count	Highest Time Period(s)	Highest Day(s)	Highest Month(s)
Fatal Crashes	2	3:00am - 5:59am	Thursday	October • September
Unrestrained Fatalities	2	Midnight - 2:59am (100%)	(100%)	(100%)
Serious Injury Crashes	2	9:00pm - 11:59pm	Friday • Saturday	January • November
		Midnight - 2:59am (100%)	(100%)	(100%)



House District 53 Unrestrained-Related Crashes

Interstate Crashes

Non-interstate Crashes

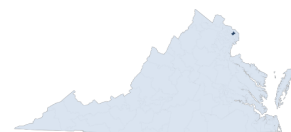
● Fatal

● Fatal

⊕ Serious Injury

⊕ Serious Injury

The blue gradient represents the density of all unrestrained-related crashes.

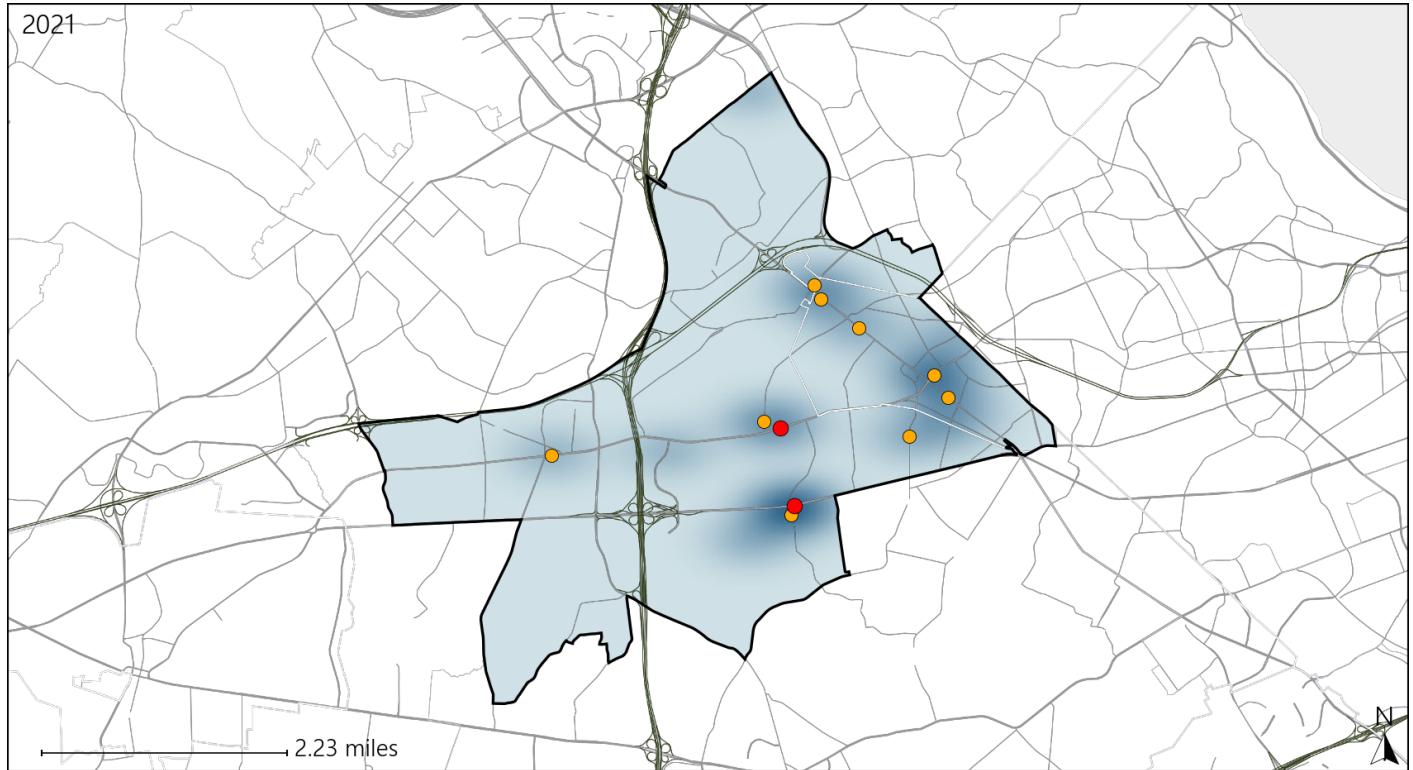


Available Crash Data - Calendar Year (CY)	CY 2018	CY 2019	CY 2020	CY 2021
Total Crashes	1385	1405	854	1003
Fatalities	2	5	0	7
Injuries	676	716	400	551
Unrestrained Fatalities	0	0	0	2
Percent of Unrestrained Fatalities to Total Fatalities	0%	0%	0%	29%
Unrestrained Injuries	14	10	6	14
Percent of Unrestrained Injuries to Total Injuries	2%	1%	2%	3%

Virginia House District 53 Pedestrian Crash Statistics

Report Generated April, 2022

	Count	Highest Time Period(s)	Highest Day(s)	Highest Month(s)
Fatal Crashes	2	6:00pm - 8:59pm	Friday • Wednesday	April • January
Pedestrian Fatalities	2	9:00pm - 11:59pm (100%)	(100%)	(100%)
Serious Injury Crashes	9	3:00pm - 5:59pm (67%)	Thursday • Tuesday (44%)	December • October (44%)



House District 53 Pedestrian-Related Crashes

Interstate Crashes

Non-interstate Crashes

- Fatal
- Serious Injury

- Fatal
- Serious Injury

The blue gradient represents the density of all pedestrian-related crashes.

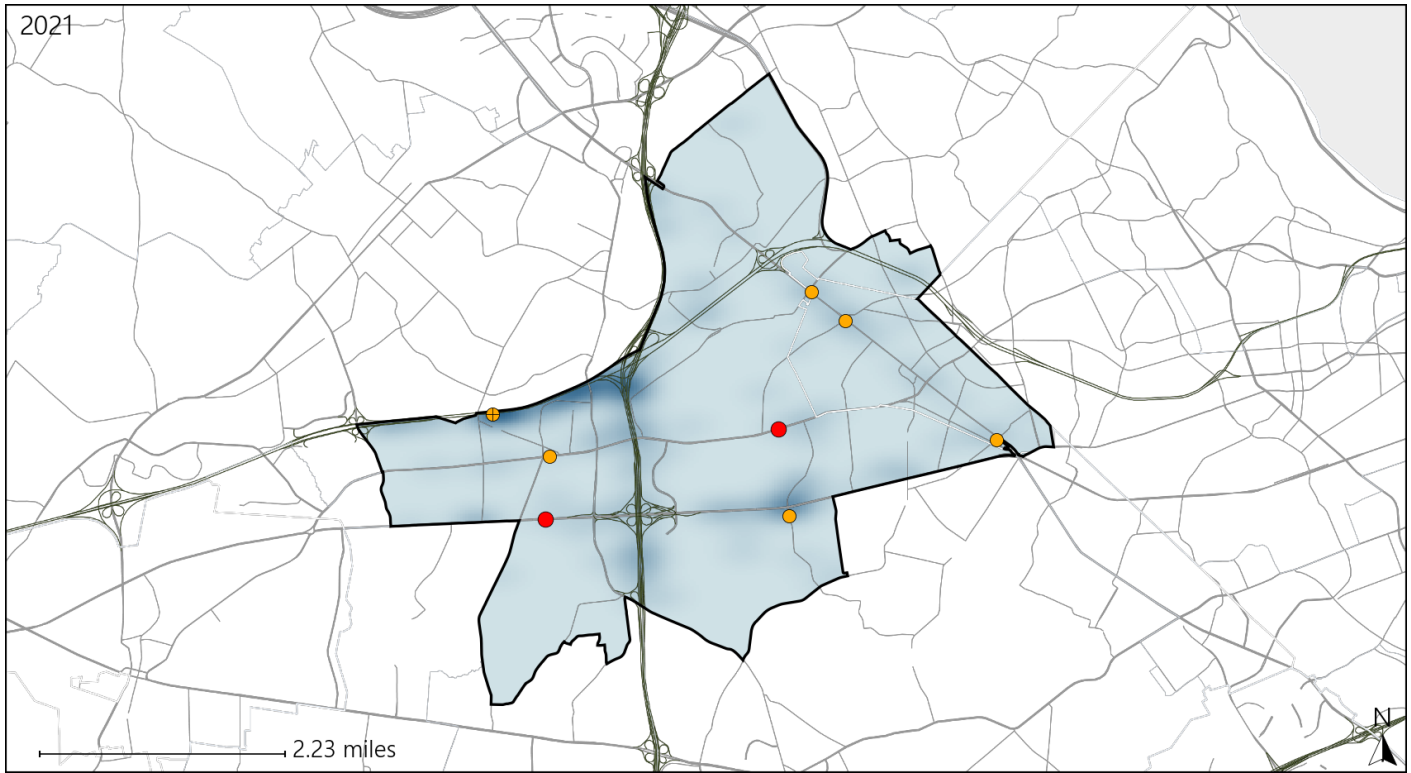


Available Crash Data - Calendar Year (CY)	CY 2018	CY 2019	CY 2020	CY 2021
Total Crashes	1385	1405	854	1003
Fatal Crashes	2	5	0	5
Injury Crashes	454	464	262	341
Pedestrian-Related Fatal Crashes	1	4	0	2
Percent of Pedestrian-Related Fatal Crashes to Total Fatal Crashes	50%	80%	0%	40%
Pedestrian-Related Injury Crashes	22	21	20	16
Percent of Pedestrian-Related Injury Crashes to Total Injury Crashes	5%	5%	8%	5%

Virginia House District 53 Distracted Driving Crash Statistics

Report Generated April, 2022

	Count	Highest Time Period(s)	Highest Day(s)	Highest Month(s)
Fatal Crashes	2	3:00am - 5:59am	Monday • Wednesday	January • March
Resulting Fatalities	2	6:00pm - 8:59pm (100%)	(100%)	(100%)
Serious Injury Crashes	6	3:00pm - 5:59pm	Saturday • Wednesday	April
		6:00am - 8:59am (34%)	(66%)	(33%)



House District 53 Distracted Driving-Related Crashes

Interstate Crashes

- Fatal
- Serious Injury

Non-interstate Crashes

- Fatal
- Serious Injury

The blue gradient represents the density of all distracted driving-related crashes.



Available Crash Data - Calendar Year (CY)	CY 2018	CY 2019	CY 2020	CY 2021
Total Crashes	1385	1405	854	1003
Fatal Crashes	2	5	0	5
Injury Crashes	454	464	262	341
Distracted Driving-Related Fatal Crashes	0	3	0	2
Percent of Distracted Driving-Related Fatal Crashes to Total Fatal Crashes	0%	60%	0%	40%
Distracted Driving-Related Injury Crashes	101	103	55	63
Percent of Distracted Driving-Related Injury Crashes to Total Injury Crashes	22%	22%	21%	18%