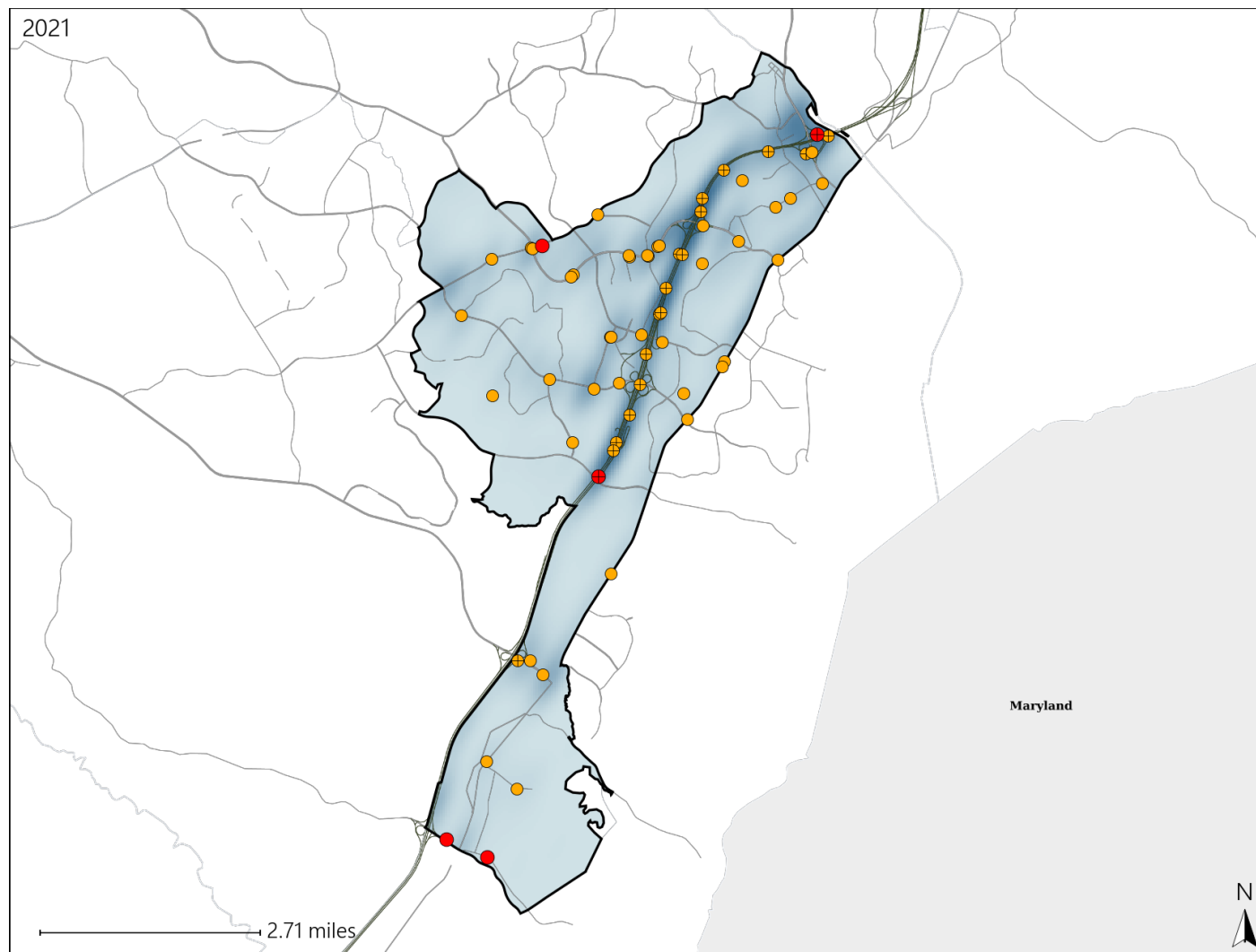


# Virginia House District 52 Crash Statistics

Report Generated April, 2022

	Count	Highest Time Period(s)	Highest Day(s)	Highest Month(s)
<b>Fatal Crashes</b>	<b>5</b>	3:00am - 5:59am	Thursday	March
<b>Resulting Fatalities</b>	<b>8</b>	3:00pm - 5:59pm (40%)	(80%)	(40%)
<b>Serious Injury Crashes</b>	<b>57</b>	6:00pm - 8:59pm (28%)	Saturday • Sunday (42%)	April • January (28%)



## House District 52 Crashes

Interstate Crashes

- Fatal
- Serious Injury

Non-interstate Crashes

- Fatal
- Serious Injury

The blue gradient represents the density of all crashes.

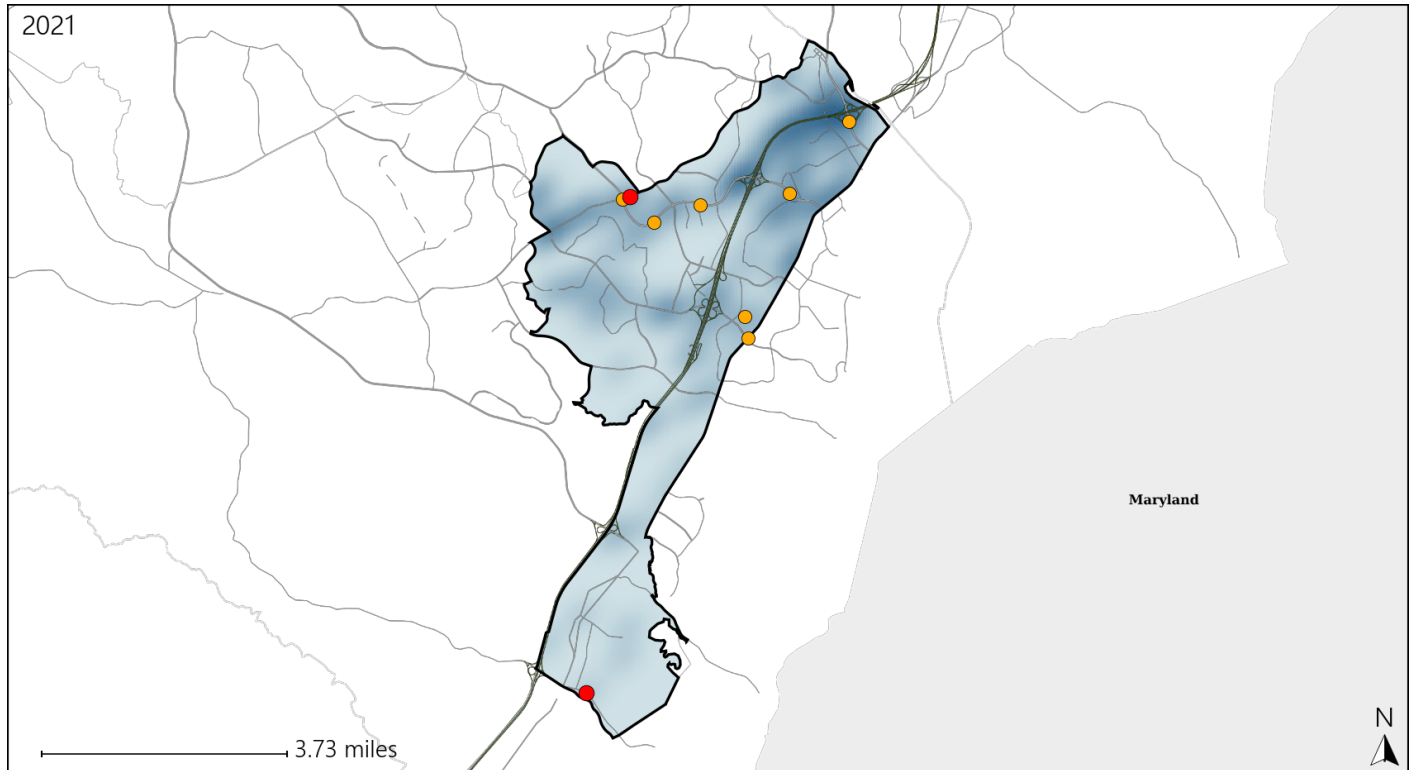


Available Crash Data - Calendar Year (CY)	CY 2018	CY 2019	CY 2020	CY 2021
Total Crashes	2054	1944	1508	1946
Fatal Crashes	9	6	5	5
Injury Crashes	619	601	380	562

# Virginia House District 52 Alcohol Crash Statistics

Report Generated April, 2022

	Count	Highest Time Period(s)	Highest Day(s)	Highest Month(s)
<b>Fatal Crashes</b>	<b>2</b>	6:00pm - 8:59pm	Thursday	March • May
<b>Resulting Fatalities</b>	<b>2</b>	9:00am - 11:59am (100%)	(100%)	(100%)
<b>Serious Injury Crashes</b>	<b>7</b>	6:00pm - 8:59pm Midnight - 2:59am (58%)	Saturday • Sunday (58%)	April (29%)



## House District 52 Alcohol-Related Crashes

Interstate Crashes

Non-interstate Crashes

● Fatal

● Fatal

⊕ Serious Injury

⊕ Serious Injury

The blue gradient represents the density of all alcohol-related crashes.



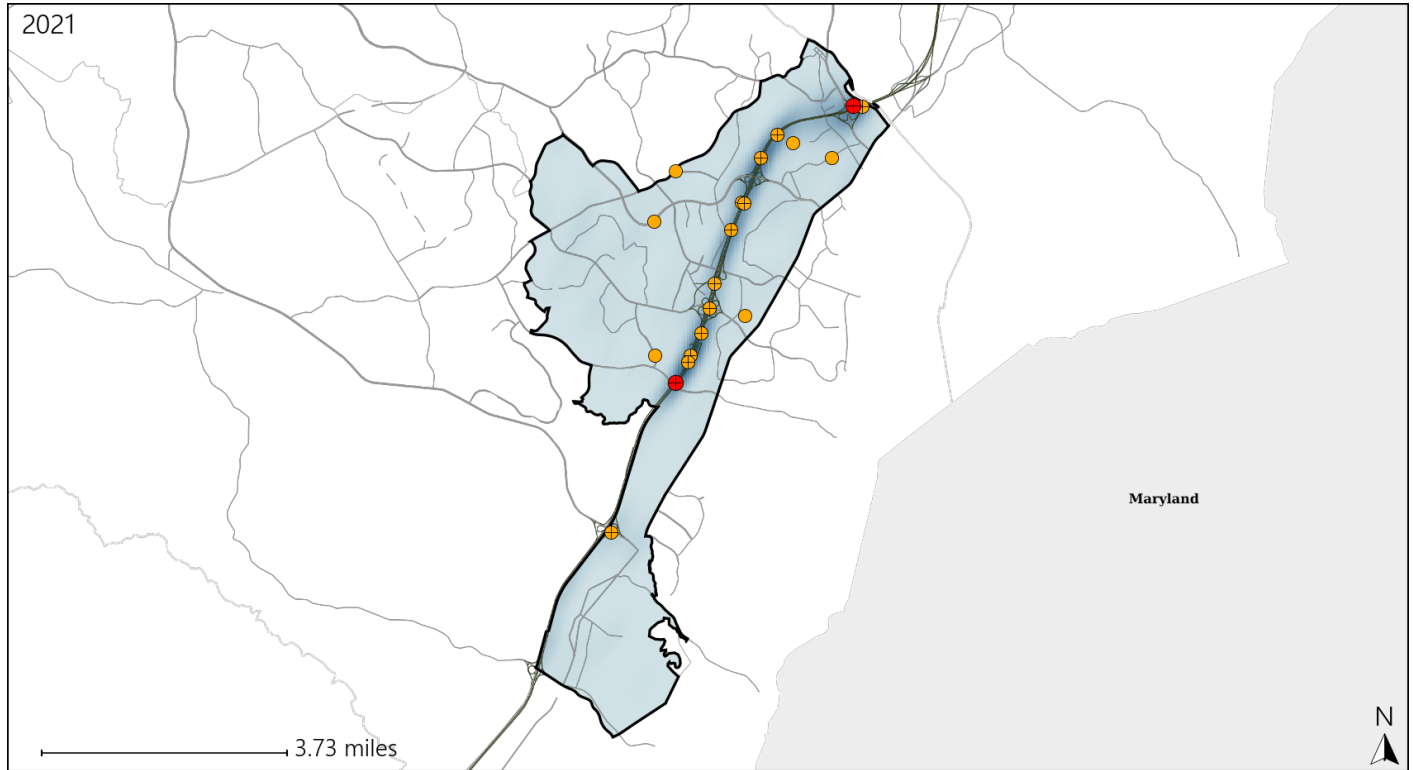
Available Crash Data - Calendar Year (CY)	CY 2018	CY 2019	CY 2020	CY 2021
Total Crashes	2054	1944	1508	1946
Fatal Crashes	9	6	5	5
Injury Crashes	619	601	380	562
Alcohol-Related Fatal Crashes	7	3	0	2
Percent of Alcohol-Related Fatal Crashes to Total Fatal Crashes	78%	50%	0%	40%
Alcohol-Related Injury Crashes	28	35	26	43
Percent of Alcohol-Related Injury Crashes to Total Injury Crashes	5%	6%	7%	8%

Report of Crashes for January 1<sup>st</sup> - December 31<sup>st</sup>, 2021

# Virginia House District 52 Speed Crash Statistics

Report Generated April, 2022

	Count	Highest Time Period(s)	Highest Day(s)	Highest Month(s)
<b>Fatal Crashes</b>	<b>2</b>	3:00am - 5:59am	Sunday • Thursday	March • October
<b>Resulting Fatalities</b>	<b>5</b>	3:00pm - 5:59pm (100%)	(100%)	(100%)
<b>Serious Injury Crashes</b>	<b>18</b>	6:00pm - 8:59pm (33%)	Saturday (28%)	April (22%)



## House District 52 Speed-Related Crashes

Interstate Crashes

Non-interstate Crashes

- Fatal
- Serious Injury

- Fatal
- Serious Injury

The blue gradient represents the density of all speed-related crashes.

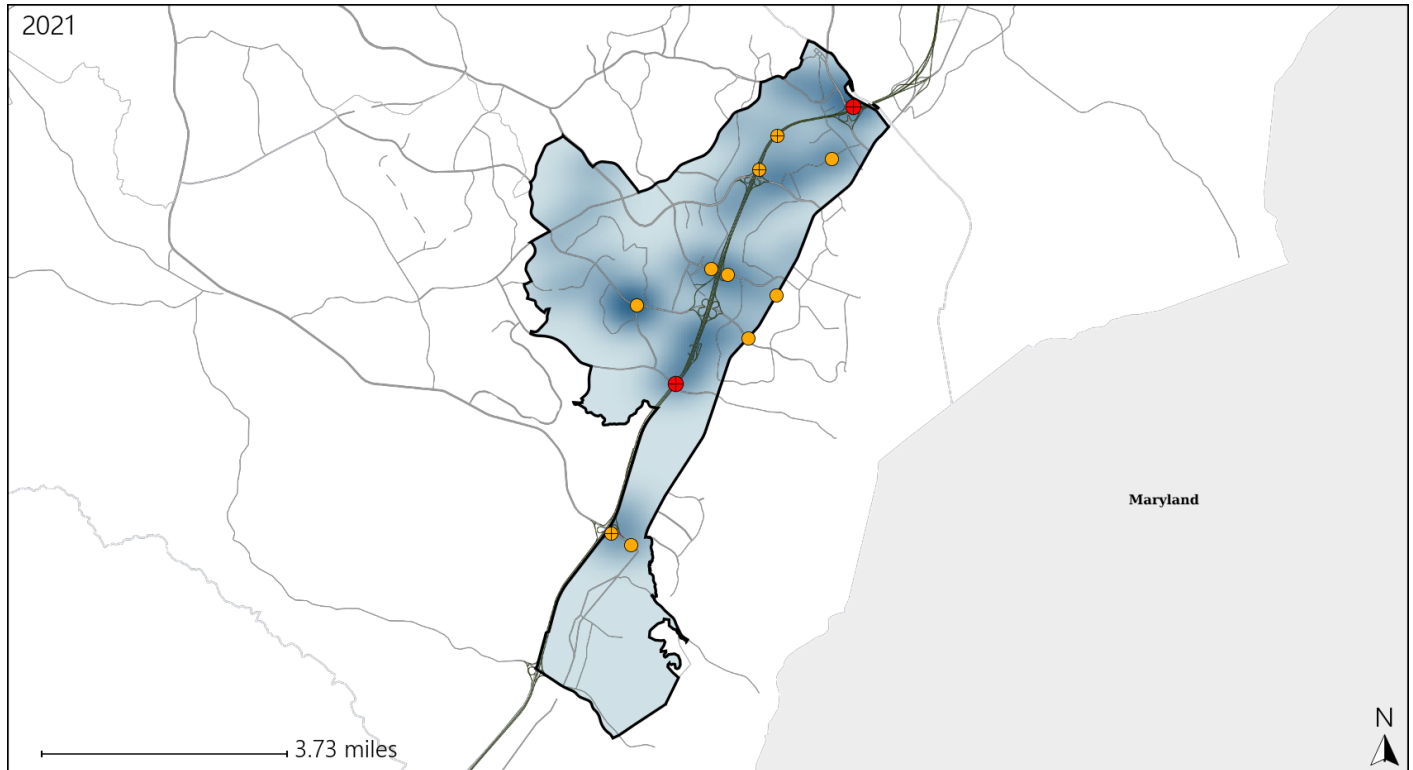


Available Crash Data - Calendar Year (CY)	CY 2018	CY 2019	CY 2020	CY 2021
Total Crashes	2054	1944	1508	1946
Fatal Crashes	9	6	5	5
Injury Crashes	619	601	380	562
Speed-Related Fatal Crashes	2	4	2	2
Percent of Speed-Related Fatal Crashes to Total Fatal Crashes	22%	67%	40%	40%
Speed-Related Injury Crashes	153	157	103	146
Percent of Speed-Related Injury Crashes to Total Injury Crashes	25%	26%	27%	26%

# Virginia House District 52 Unrestrained Crash Statistics

Report Generated April, 2022

	Count	Highest Time Period(s)	Highest Day(s)	Highest Month(s)
<b>Fatal Crashes</b>	<b>2</b>	3:00am - 5:59am	Sunday • Thursday	March • October
<b>Unrestrained Fatalities</b>	<b>3</b>	3:00pm - 5:59pm (100%)	(100%)	(100%)
<b>Serious Injury Crashes</b>	<b>10</b>	6:00pm - 8:59pm 9:00am - 11:59am (40%)	Saturday (40%)	January (40%)



## House District 52 Unrestrained-Related Crashes

Interstate Crashes

Non-interstate Crashes

- Fatal
- ⊕ Serious Injury

- Fatal
- Serious Injury

The blue gradient represents the density of all unrestrained-related crashes.



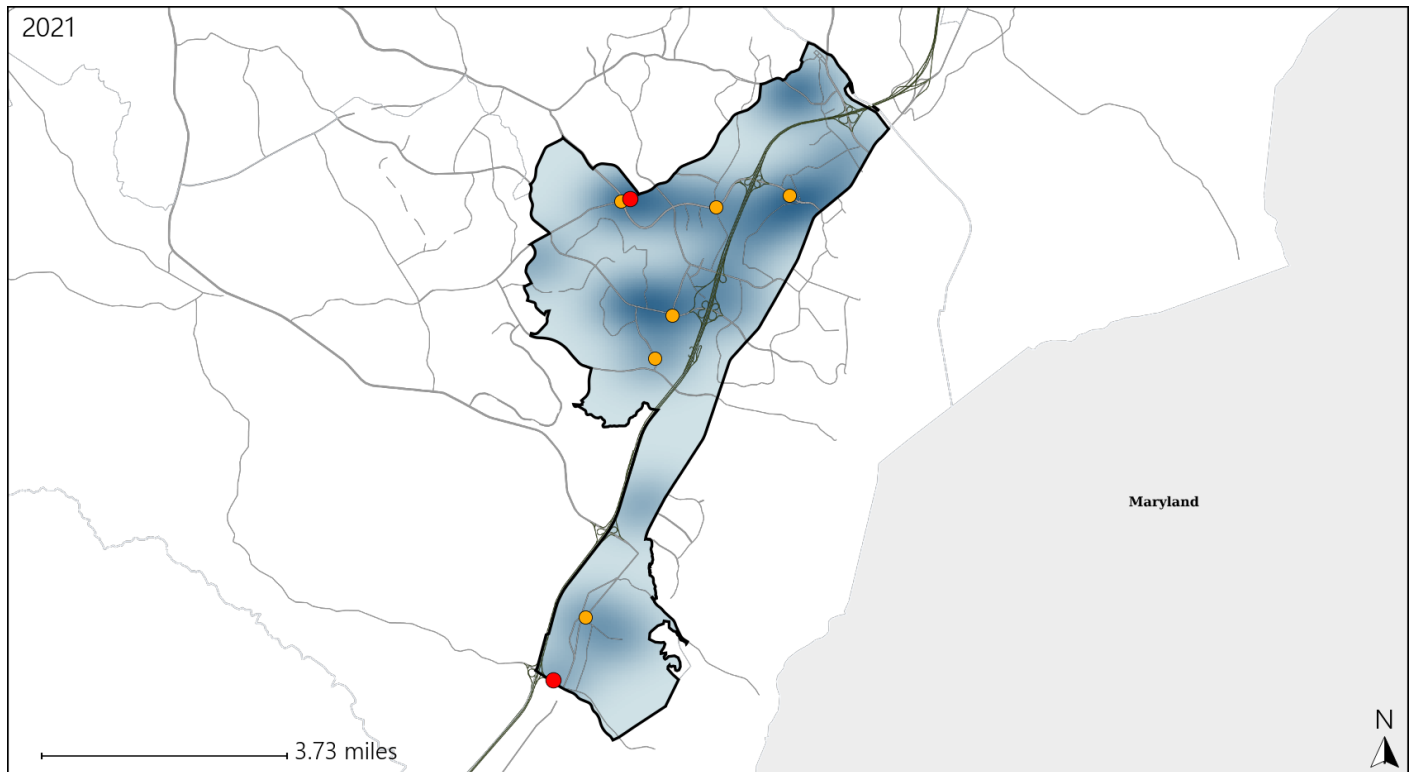
Available Crash Data - Calendar Year (CY)	CY 2018	CY 2019	CY 2020	CY 2021
Total Crashes	2054	1944	1508	1946
Fatalities	10	6	5	8
Injuries	1006	993	632	984
Unrestrained Fatalities	2	1	2	3
Percent of Unrestrained Fatalities to Total Fatalities	20%	17%	40%	38%
Unrestrained Injuries	26	30	27	40
Percent of Unrestrained Injuries to Total Injuries	3%	3%	4%	4%

Report of Crashes for January 1<sup>st</sup> - December 31<sup>st</sup>, 2021

# Virginia House District 52 Pedestrian Crash Statistics

Report Generated April, 2022

	Count	Highest Time Period(s)	Highest Day(s)	Highest Month(s)
<b>Fatal Crashes</b>	<b>2</b>	6:00pm - 8:59pm	Thursday	May • September
<b>Pedestrian Fatalities</b>	<b>2</b>	Midnight - 2:59am (100%)	(100%)	(100%)
<b>Serious Injury Crashes</b>	<b>6</b>	3:00pm - 5:59pm 9:00pm - 11:59pm (66%)	Saturday (67%)	August • October (66%)



## House District 52 Pedestrian-Related Crashes

Interstate Crashes

Non-interstate Crashes

● Fatal

● Fatal

⊕ Serious Injury

⊕ Serious Injury

The blue gradient represents the density of all pedestrian-related crashes.

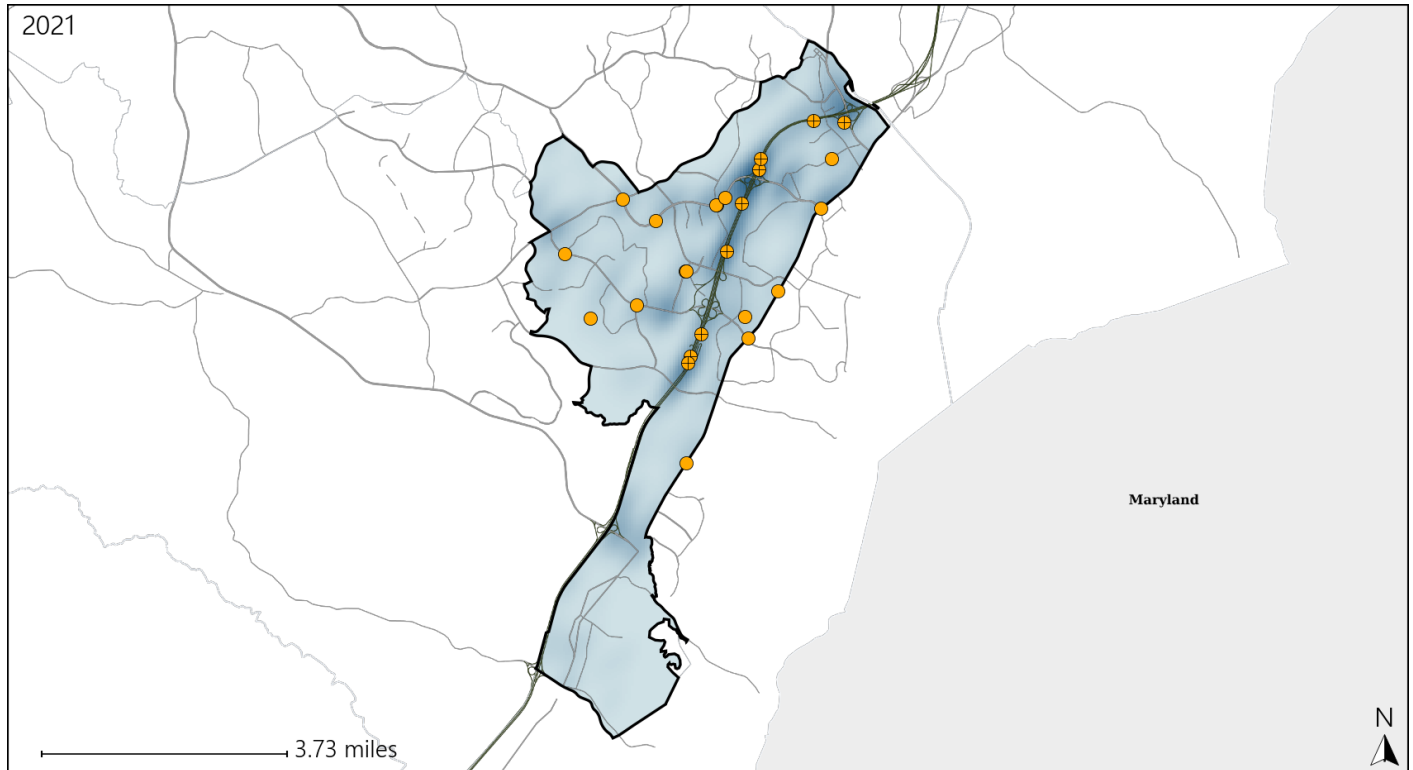


Available Crash Data - Calendar Year (CY)	CY 2018	CY 2019	CY 2020	CY 2021
Total Crashes	2054	1944	1508	1946
Fatal Crashes	9	6	5	5
Injury Crashes	619	601	380	562
Pedestrian-Related Fatal Crashes	3	3	1	2
Percent of Pedestrian-Related Fatal Crashes to Total Fatal Crashes	33%	50%	20%	40%
Pedestrian-Related Injury Crashes	30	15	15	20
Percent of Pedestrian-Related Injury Crashes to Total Injury Crashes	5%	2%	4%	4%

# Virginia House District 52 Distracted Driving Crash Statistics

Report Generated April, 2022

	Count	Highest Time Period(s)	Highest Day(s)	Highest Month(s)
<b>Fatal Crashes</b>	<b>0</b>	-	-	-
<b>Resulting Fatalities</b>	<b>0</b>	-	-	-
<b>Serious Injury Crashes</b>	<b>25</b>	<b>6:00pm - 8:59pm</b> (28%)	<b>Sunday</b> (24%)	<b>January</b> (24%)



## House District 52 Distracted Driving-Related Crashes

Interstate Crashes

Non-interstate Crashes

- Fatal
- Serious Injury

- Fatal
- Serious Injury

The blue gradient represents the density of all distracted driving-related crashes.



Available Crash Data - Calendar Year (CY)	CY 2018	CY 2019	CY 2020	CY 2021
Total Crashes	2054	1944	1508	1946
Fatal Crashes	9	6	5	5
Injury Crashes	619	601	380	562
Distracted Driving-Related Fatal Crashes	3	1	3	0
Percent of Distracted Driving-Related Fatal Crashes to Total Fatal Crashes	33%	17%	60%	0%
Distracted Driving-Related Injury Crashes	137	120	78	129
Percent of Distracted Driving-Related Injury Crashes to Total Injury Crashes	22%	20%	21%	23%