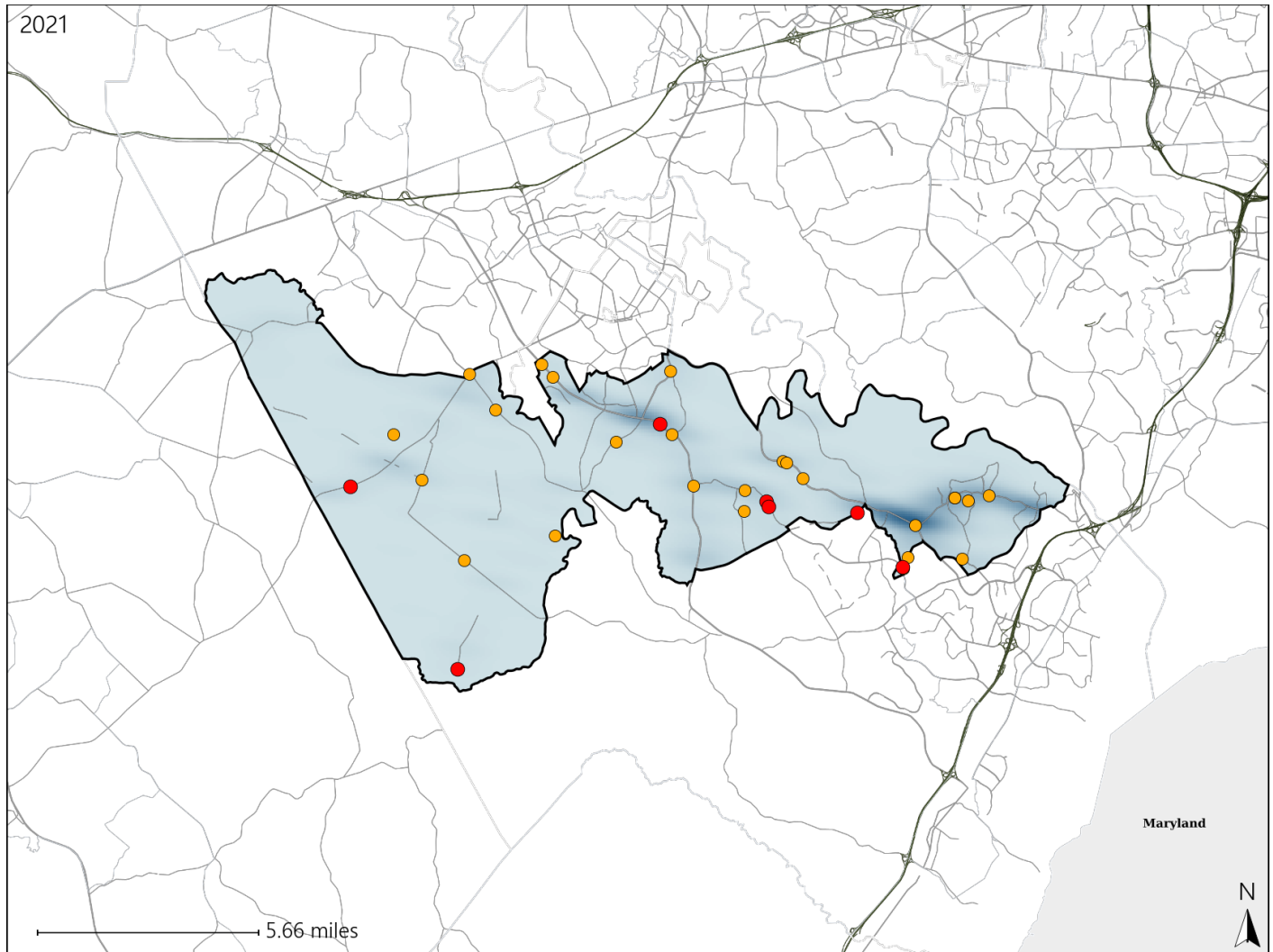


Virginia House District 51 Crash Statistics

Report Generated April, 2022

	Count	Highest Time Period(s)	Highest Day(s)	Highest Month(s)
Fatal Crashes	7	Noon - 2:59pm	Tuesday • Wednesday	October • September
Resulting Fatalities	7	(29%)	(58%)	(58%)
Serious Injury Crashes	25	3:00pm - 5:59pm 6:00pm - 8:59pm	Friday • Sunday	August
		(56%)	(40%)	(28%)



House District 51 Crashes

Interstate Crashes

- Fatal
- Serious Injury

Non-interstate Crashes

- Fatal
- Serious Injury

The blue gradient represents the density of all crashes.

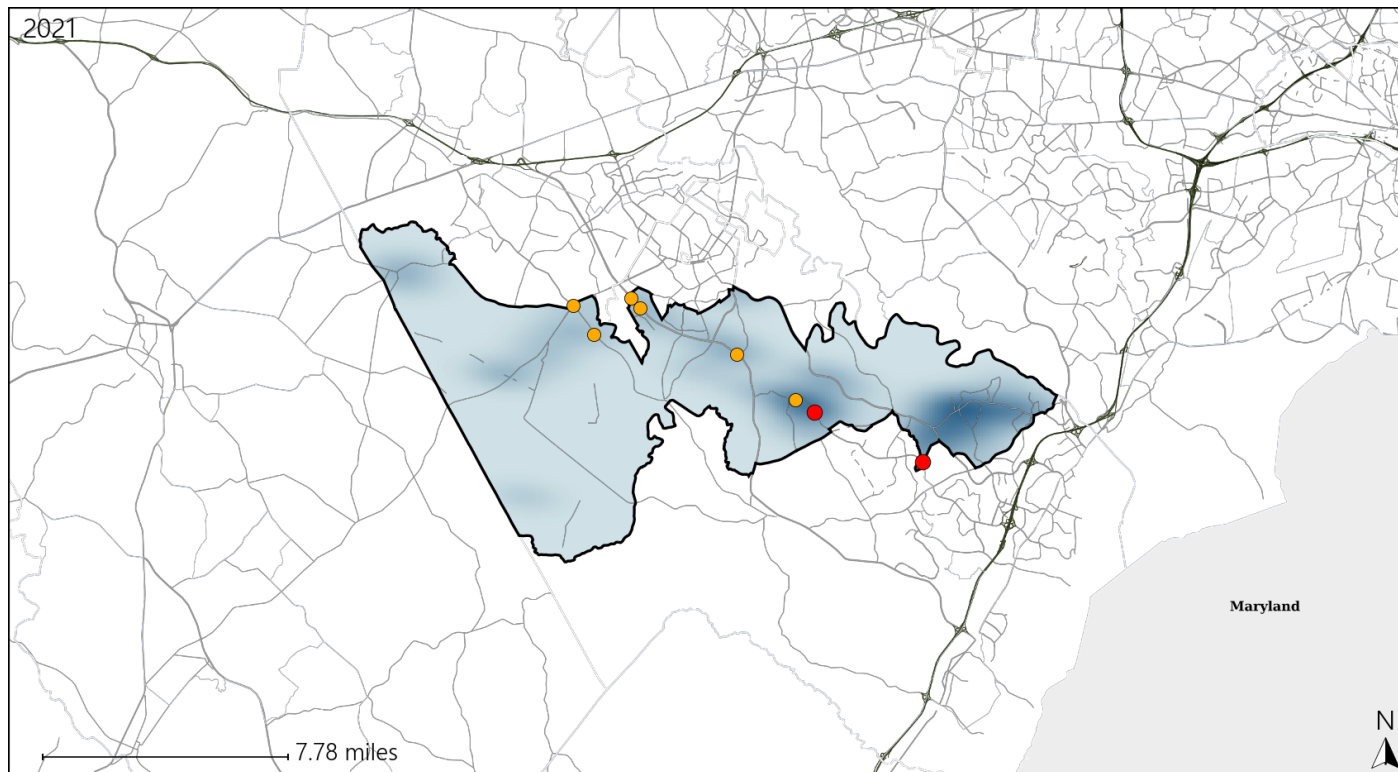


Available Crash Data - Calendar Year (CY)	CY 2018	CY 2019	CY 2020	CY 2021
Total Crashes	729	814	507	707
Fatal Crashes	4	2	2	7
Injury Crashes	238	240	141	202

Virginia House District 51 Alcohol Crash Statistics

Report Generated April, 2022

	Count	Highest Time Period(s)	Highest Day(s)	Highest Month(s)
Fatal Crashes	2	3:00pm - 5:59pm	Saturday • Tuesday	October • September
Resulting Fatalities	2	9:00pm - 11:59pm (100%)	(100%)	(100%)
Serious Injury Crashes	6	6:00pm - 8:59pm (67%)	Saturday (33%)	August (33%)



House District 51 Alcohol-Related Crashes

Interstate Crashes

Non-interstate Crashes

● Fatal

● Fatal

● Serious Injury

● Serious Injury

The blue gradient represents the density of all alcohol-related crashes.



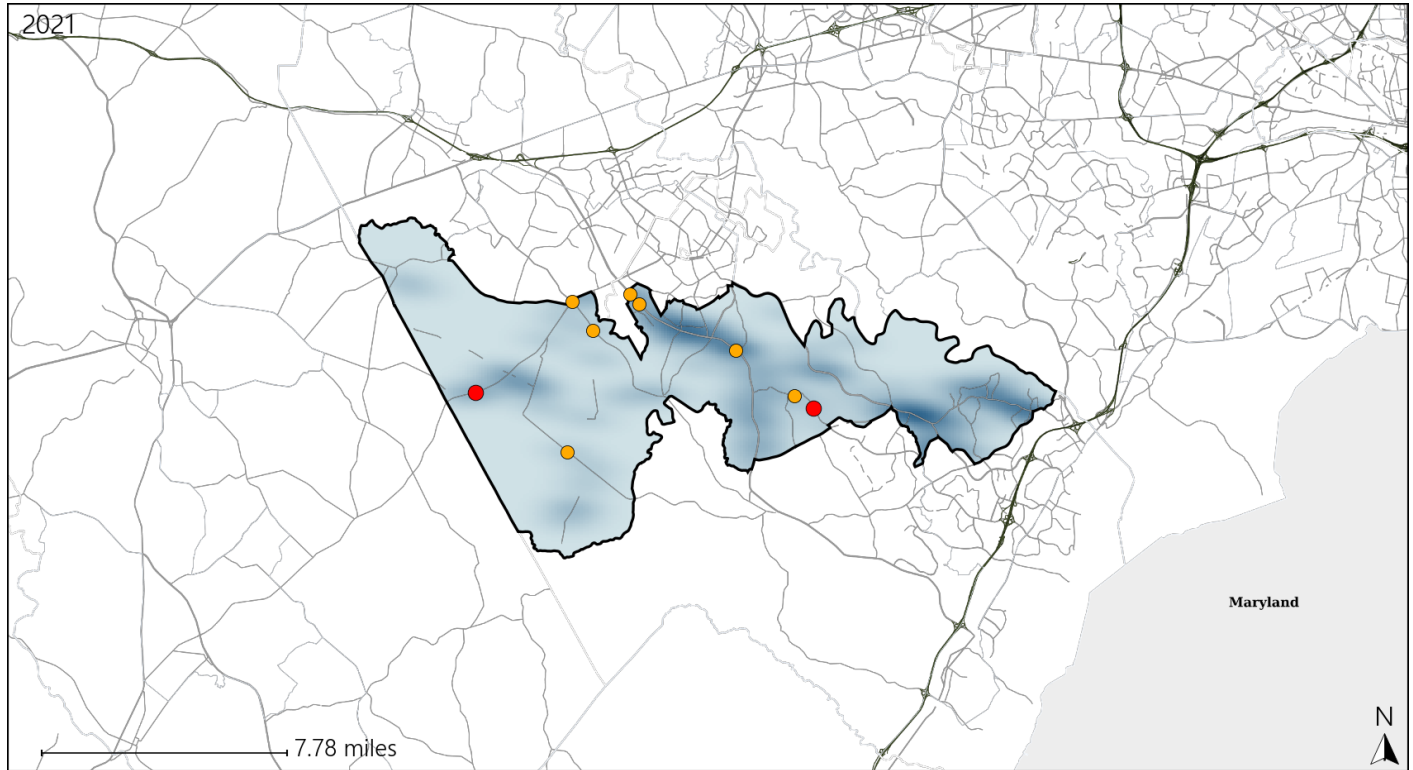
Available Crash Data - Calendar Year (CY)	CY 2018	CY 2019	CY 2020	CY 2021
Total Crashes	729	814	507	707
Fatal Crashes	4	2	2	7
Injury Crashes	238	240	141	202
Alcohol-Related Fatal Crashes	3	0	1	2
Percent of Alcohol-Related Fatal Crashes to Total Fatal Crashes	75%	0%	50%	29%
Alcohol-Related Injury Crashes	19	16	15	16
Percent of Alcohol-Related Injury Crashes to Total Injury Crashes	8%	7%	11%	8%

Report of Crashes for January 1st - December 31st, 2021

Virginia House District 51 Speed Crash Statistics

Report Generated April, 2022

	Count	Highest Time Period(s)	Highest Day(s)	Highest Month(s)
Fatal Crashes	2	9:00pm - 11:59pm	Friday • Tuesday	October • September
Resulting Fatalities	2	Noon - 2:59pm (100%)	(100%)	(100%)
Serious Injury Crashes	7	6:00pm - 8:59pm (57%)	Saturday (29%)	August • June (58%)



House District 51 Speed-Related Crashes

Interstate Crashes

Non-interstate Crashes

● Fatal

● Fatal

● Serious Injury

● Serious Injury

The blue gradient represents the density of all speed-related crashes.

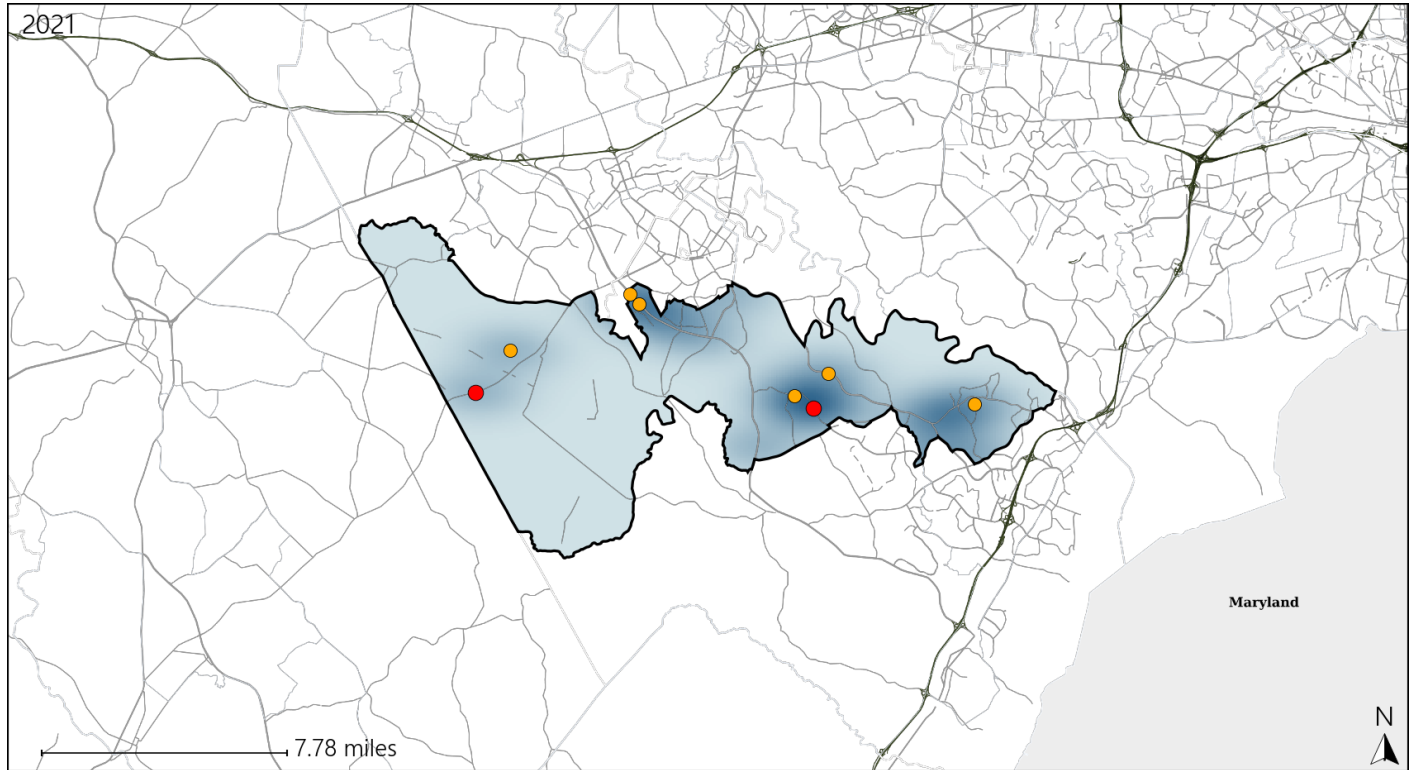


Available Crash Data - Calendar Year (CY)	CY 2018	CY 2019	CY 2020	CY 2021
Total Crashes	729	814	507	707
Fatal Crashes	4	2	2	7
Injury Crashes	238	240	141	202
Speed-Related Fatal Crashes	2	1	1	2
Percent of Speed-Related Fatal Crashes to Total Fatal Crashes	50%	50%	50%	29%
Speed-Related Injury Crashes	38	52	39	37
Percent of Speed-Related Injury Crashes to Total Injury Crashes	16%	22%	28%	18%

Virginia House District 51 Unrestrained Crash Statistics

Report Generated April, 2022

	Count	Highest Time Period(s)	Highest Day(s)	Highest Month(s)
Fatal Crashes	2	9:00pm - 11:59pm	Friday • Tuesday	October • September
Unrestrained Fatalities	2	Noon - 2:59pm (100%)	(100%)	(100%)
Serious Injury Crashes	6	3:00pm - 5:59pm (50%)	Friday (33%)	August (50%)



House District 51 Unrestrained-Related Crashes

Interstate Crashes

Non-interstate Crashes

- Fatal
- Serious Injury

- Fatal
- Serious Injury

The blue gradient represents the density of all unrestrained-related crashes.

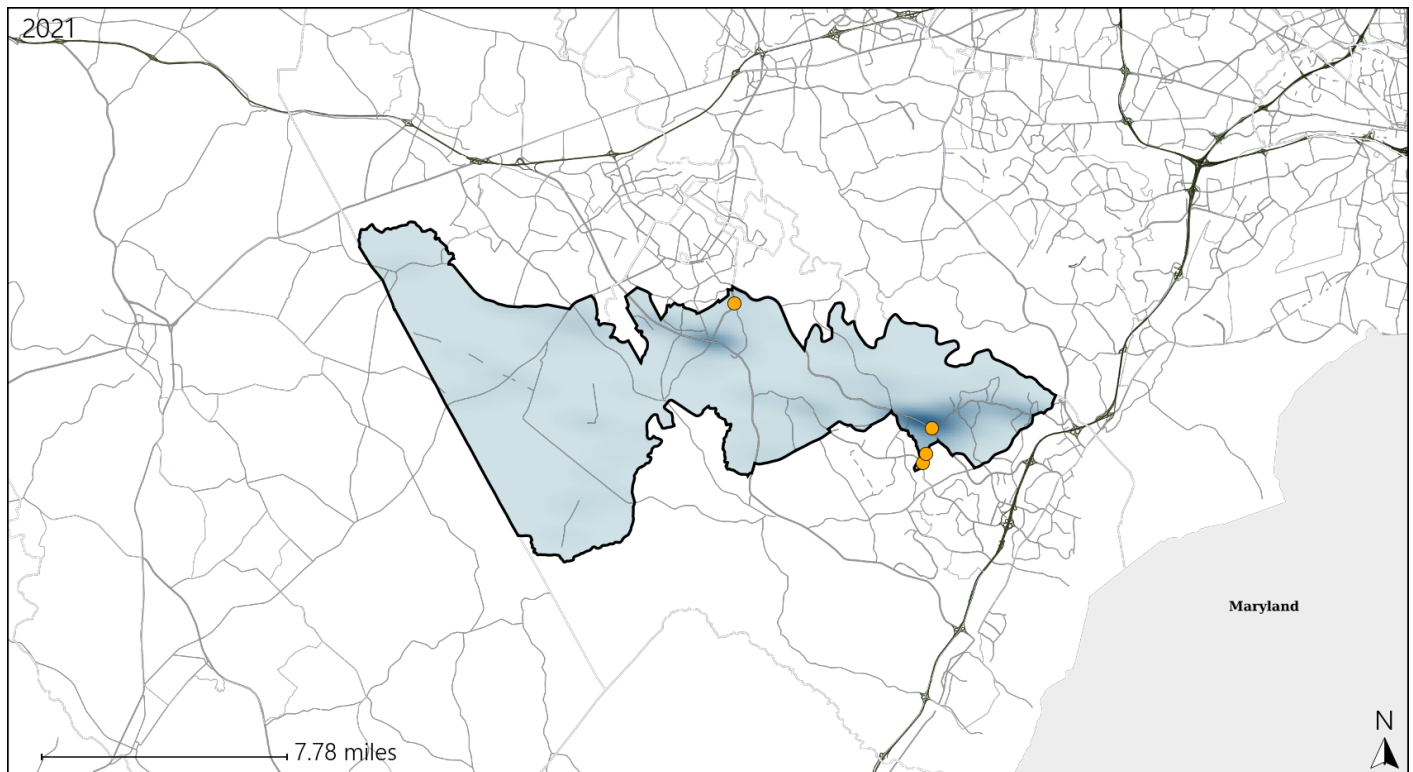


Available Crash Data - Calendar Year (CY)	CY 2018	CY 2019	CY 2020	CY 2021
Total Crashes	729	814	507	707
Fatalities	4	2	2	7
Injuries	386	394	209	357
Unrestrained Fatalities	3	1	1	2
Percent of Unrestrained Fatalities to Total Fatalities	75%	50%	50%	29%
Unrestrained Injuries	16	15	8	17
Percent of Unrestrained Injuries to Total Injuries	4%	4%	4%	5%

Virginia House District 51 Distracted Driving Crash Statistics

Report Generated April, 2022

	Count	Highest Time Period(s)	Highest Day(s)	Highest Month(s)
Fatal Crashes	0	-	-	-
Resulting Fatalities	0	-	-	-
Serious Injury Crashes	4	3:00pm - 5:59pm Noon - 2:59pm (100%)	Monday • Sunday (50%)	December • June (50%)



House District 51 Distracted Driving-Related Crashes

Interstate Crashes

Non-interstate Crashes

- Fatal
- ⊕ Serious Injury

- Fatal
- ⊕ Serious Injury

The blue gradient represents the density of all distracted driving-related crashes.



Available Crash Data - Calendar Year (CY)	CY 2018	CY 2019	CY 2020	CY 2021
Total Crashes	729	814	507	707
Fatal Crashes	4	2	2	7
Injury Crashes	238	240	141	202
Distracted Driving-Related Fatal Crashes	0	0	0	0
Percent of Distracted Driving-Related Fatal Crashes to Total Fatal Crashes	0%	0%	0%	0%
Distracted Driving-Related Injury Crashes	61	63	33	58
Percent of Distracted Driving-Related Injury Crashes to Total Injury Crashes	26%	26%	23%	29%